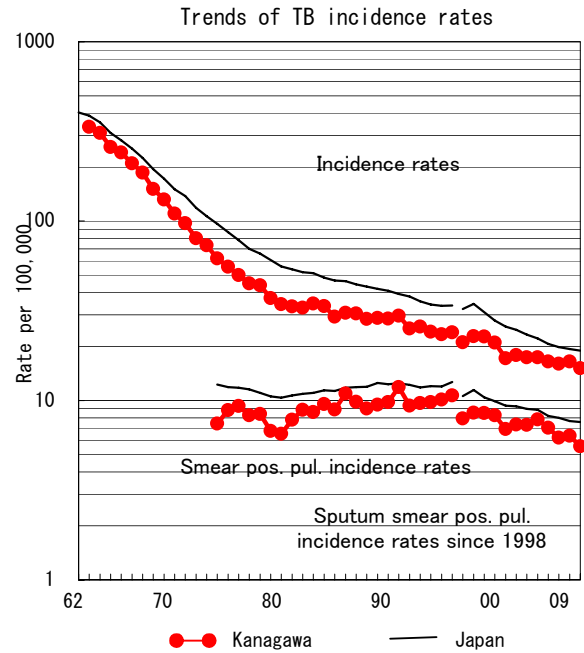
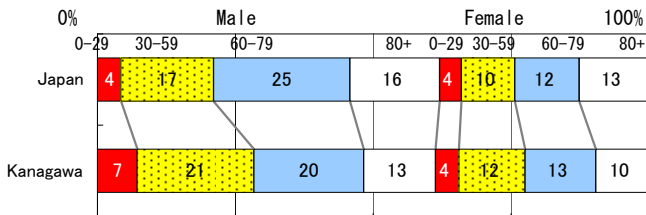


# Kanagawa

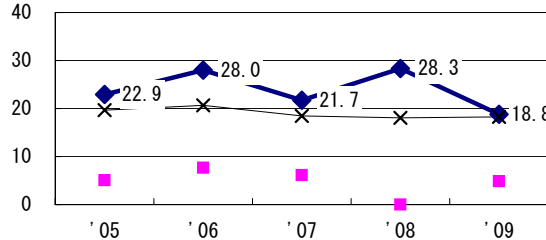
TB statistics in 2009		
Population	3,861,780	(Japan)
Foreigners	22	3.8% (3.9%)
Estimated homeless or poor TB among male cases aged 30-59 yrs	8	6.5% (12.0%)

Trends	'05	'06	'07	'08	'09
Notified cases	677	640	622	638	584
Rate per 100,000	17.4	16.5	16.0	16.5	15.1
Sputum smear pos. pul. cases	305	274	241	246	214
Rate per 100,000	7.9	7.1	6.2	6.3	5.5

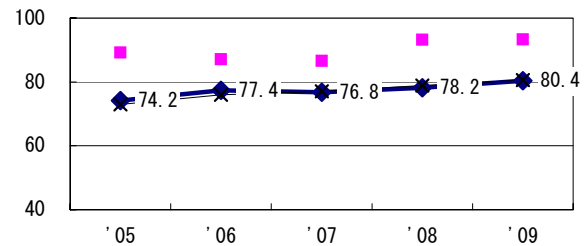
Age-sex composition of notified cases, 2009



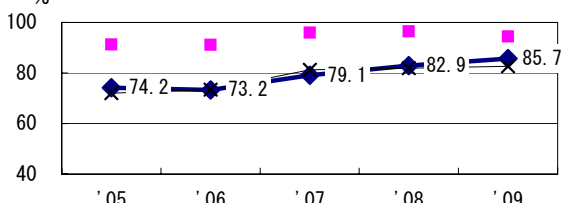
Proportion of cases with long case finding delay (>3M) among symptomatic pul. TB †



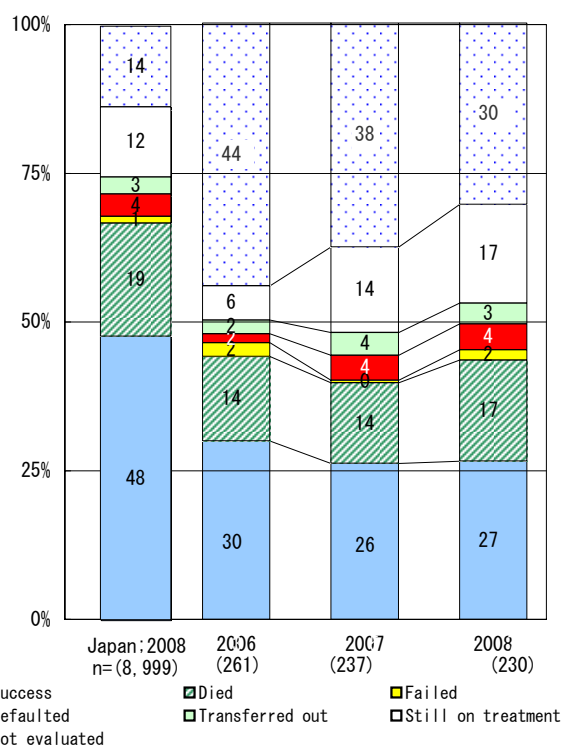
Proportion of Tx with HRZ-E/S among all forms of TB cases aged under 80 yrs ‡



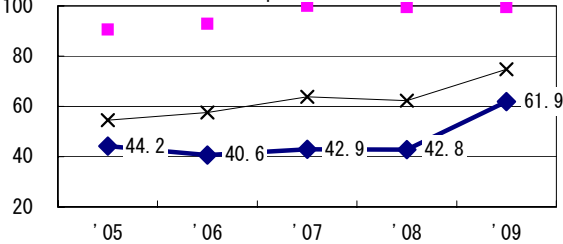
Proportion of bacillary cases among pul. TB



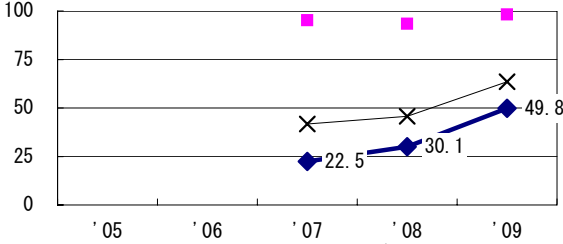
Treatment outcomes of new sputum smear-pos. pul. cases registered in 2006-2008



Proportion of culture results obtained among pul. TB



Proportion of DST results obtained among culture pos. pul. TB



◆ Kanagawa    ■ Best prefec./city    × Japan

	'05	'06	'07	'08	'09
† Excluding unk delay (%)	17.7	20.1	45.3	63.8	62.6
‡ Excluding unk Tx (%)	21.7	31.4	9.8	5.7	0.9

Registered year	'07	'08	Japan
Median days of treatment (all forms)	281	295	(272)
Median days of hospitalization (pul. TB)	71	63	(67)