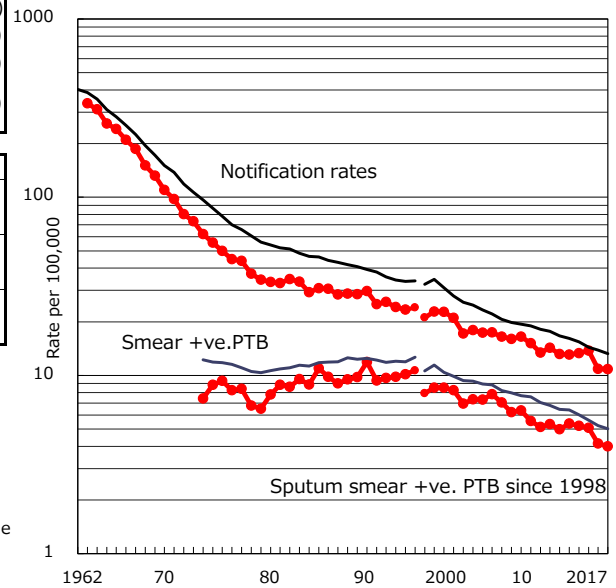


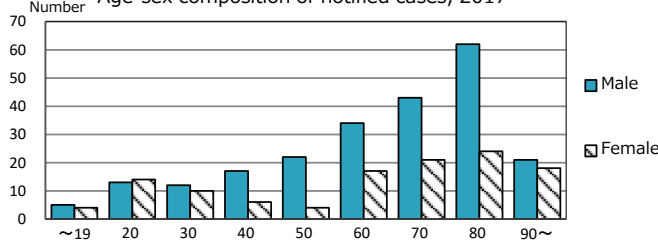
TB statistics in 2017 (Population in Kanagawa 3,199,589)	
Among newly notified : (Japan)	
Foreign borns	37 10.7% (9.1%)
TB cases with homeless history	3 0.9% (0.9%)
Male aged 35-59, without job and receiving public assistance	3 5.9% (7.3%)

Trends	'13	'14	'15	'16	2017
Notified cases	420	426	441	348	347
Rate per 100,000 population	13.1	13.3	13.8	10.9	10.8
Sputum smear +ve. PTB	172	167	163	133	128
Rate per 100,000 population	5.4	5.2	5.1	4.2	4.0
Latent Tuberculosis Infection	161	211	228	177	172
Rate per 100,000 population	5.0	6.6	7.1	5.5	5.4

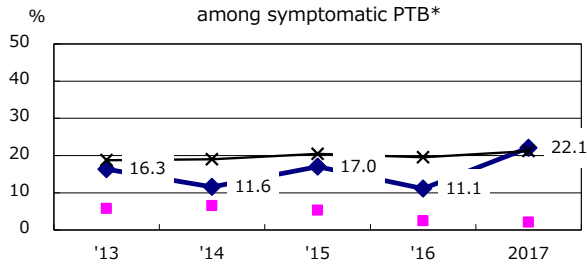
Trends of TB notification rates, all forms and smear +ve.PTB



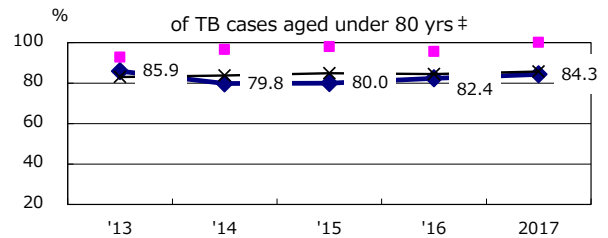
Age-sex composition of notified cases, 2017



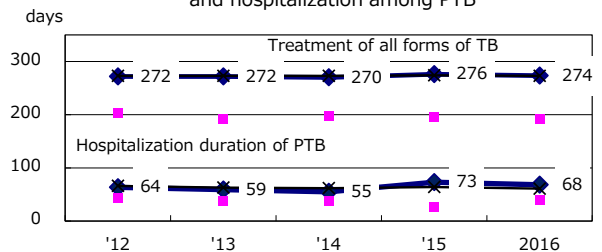
Proportion of cases with total diagnosis delay (> 3 mths) among symptomatic PTB*



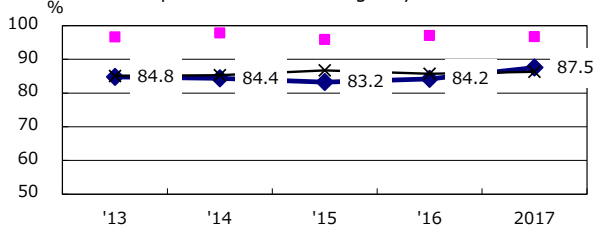
Proportion of TX with HRZ-E/S among all forms of TB cases aged under 80 yrs †



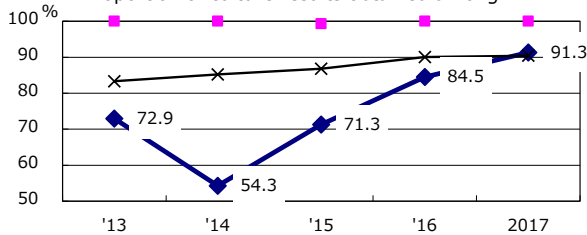
Median duration of treatment of all forms and hospitalization among PTB



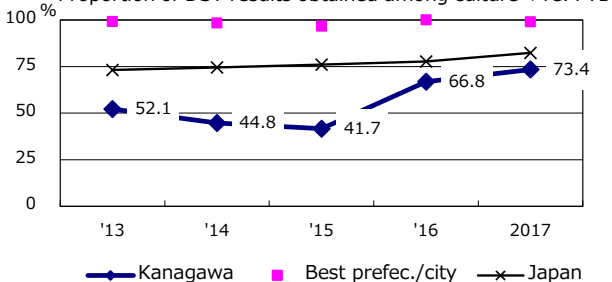
Proportion of Bacteriologically +ve. PTB



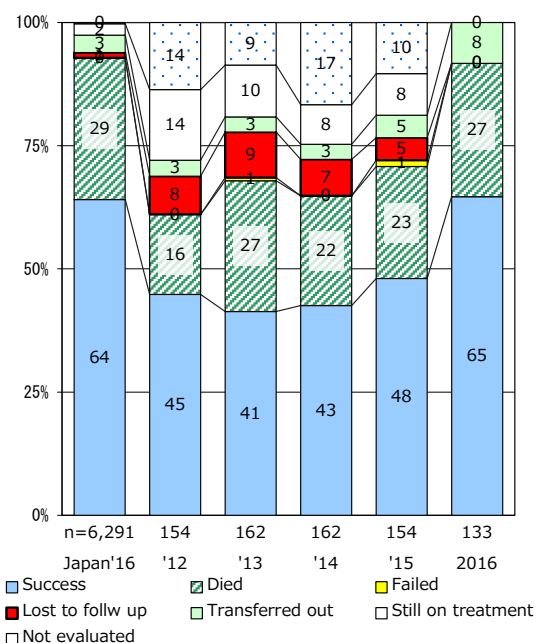
Proportion of culture results obtained among PTB



Proportion of DST results obtained among culture +ve. PTB



Treatment outcomes of new sputum smear +ve.TB



PTB : pulmonary TB

† Excluding unknown delay(%)	'13	'14	'15	'16	2017
	60.9	60.1	58.4	61.4	53.5

‡ Excluding unknown Tx(%)	'13	'14	'15	'16	2017
	1.8	1.8	3.1	1.8	2.7