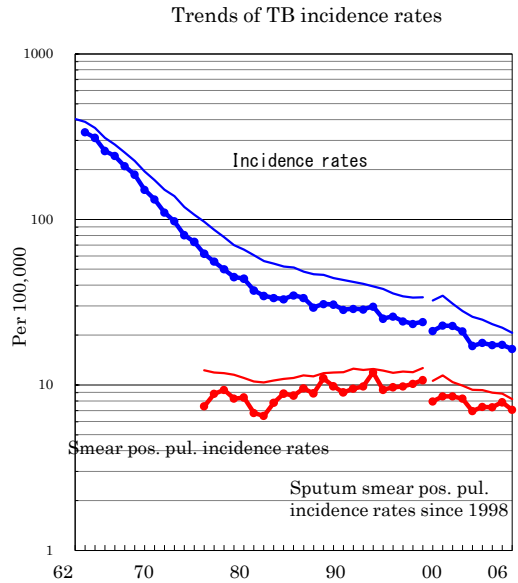
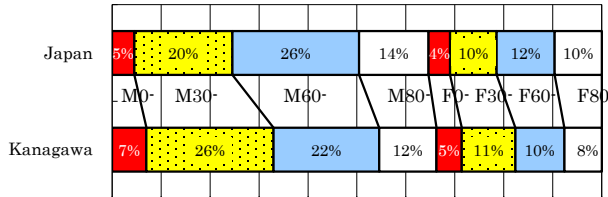


# Kanagawa

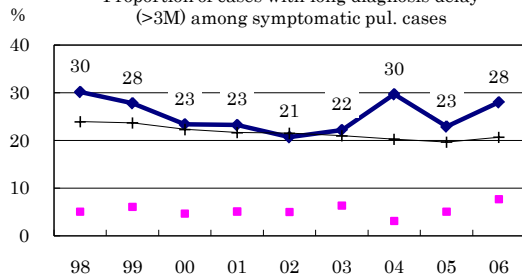
TB statistics in 2006		
Population	3,885,312	Kanagawa (Japan)
Foreigners' TB	26	4.1% (3.5%)
Estimated homeless TB among male cases aged 30-59 yrs	5	3.0% (8.9%)

Trends	02	03	04	05	06
Notified cases	661	693	672	677	640
Rate per 100,000	17.2	17.9	17.4	17.4	16.5
Sputum smear pos. pul. cases	267	284	283	305	274
Rate per 100,000	6.9	7.3	7.3	7.9	7.1

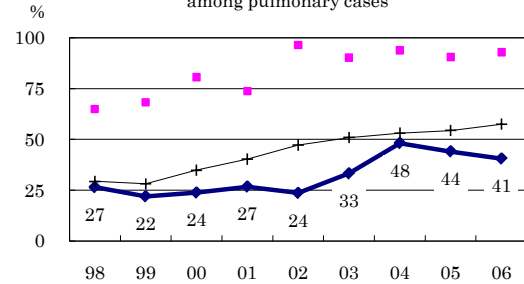
Age-sex composition of notified cases, 2006



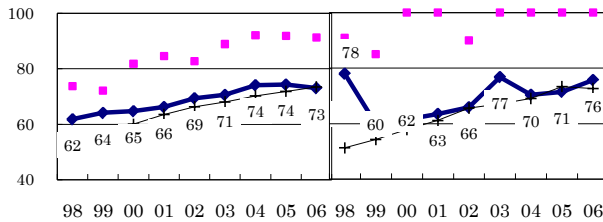
Proportion of cases with long diagnosis delay (>3M) among symptomatic pul. cases



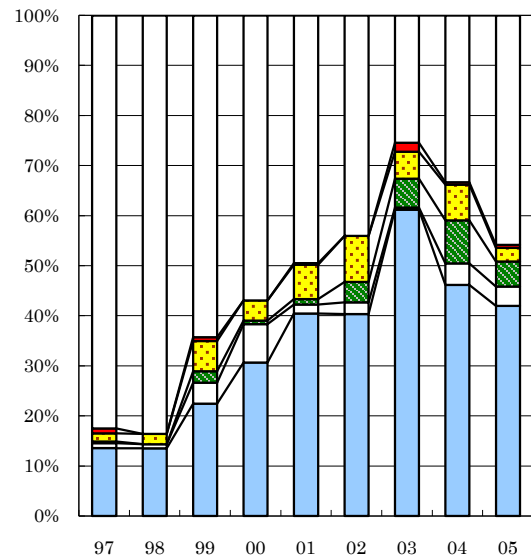
Proportion of positive or negative culture results among pulmonary cases



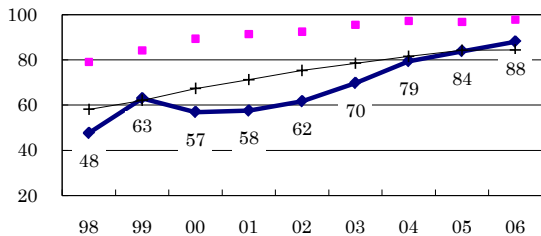
Proportion of bacillary cases among pulmonary cases (New treatment vs Retreatment)



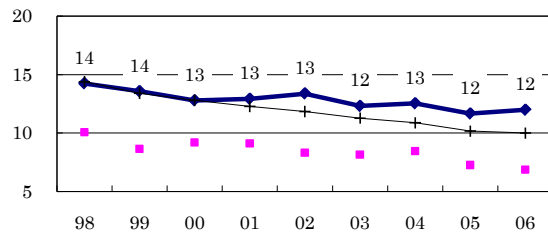
Treatment outcomes of new sputum smear-positive cases, 1997-2005 cohorts



Proportion of treatment with HRZ-E/S among new sputum smear-positive cases aged under 80 yrs



Estimated average treatment duration (Months)



	97	98	99	00	01	02	03	04	05
n=	309	244	263	274	277	218	224	210	181
Completed	14	14	22	31	40	40	61	46	42
Others	1	1	4	8	2	2	0	4	4
Died	0	0	2	1	1	4	6	9	5
Failed	2	2	6	4	7	9	5	7	3
Defaulted	1	0	1	0	0	0	2	0	1
Unknown	83	84	64	57	49	44	25	33	46