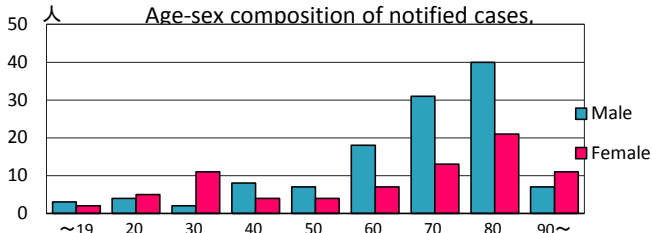
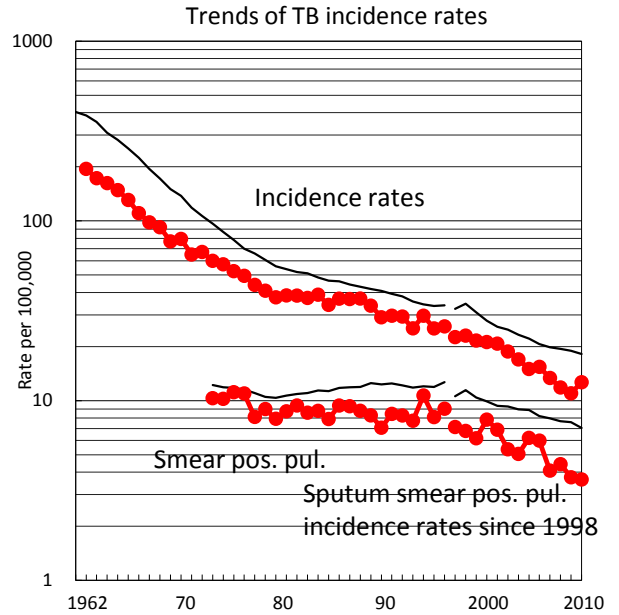
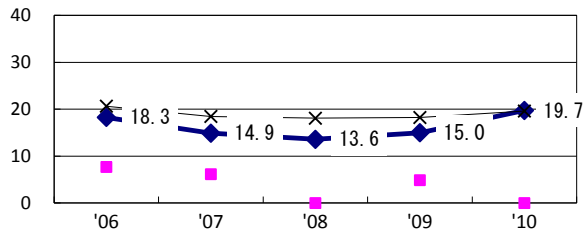


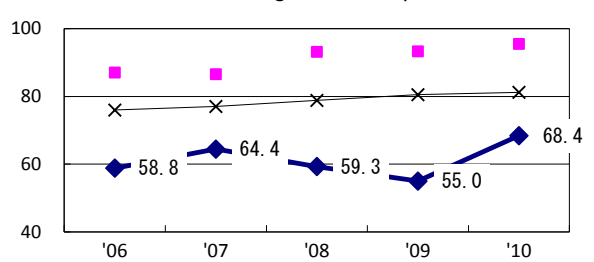
TB statistics in 2010					
Population	1,563,281			(Japan)	
Foreign borns	9	4.5%		(4.1%)	
TB patients with homeless history	0	0.0%		(1.4%)	
Jobless TB patients getting public assistance, proportion among male TB patients aged 35-59 yrs	0	0.0%		(10.8%)	
Trends	'06	'07	'08	'09	'10
Notified cases	373	213	187	173	198
Rate per 100,000	15.4	13.4	11.8	11.0	12.7
Sputum smear pos. pul. cases	145	65	70	59	57
Rate per 100,000	6.0	4.1	4.4	3.7	3.6



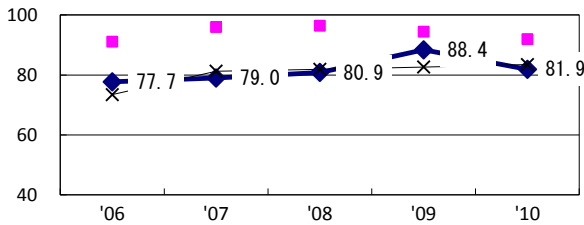
Proportion of cases with long case finding delay (>3M) among symptomatic pul. TB †



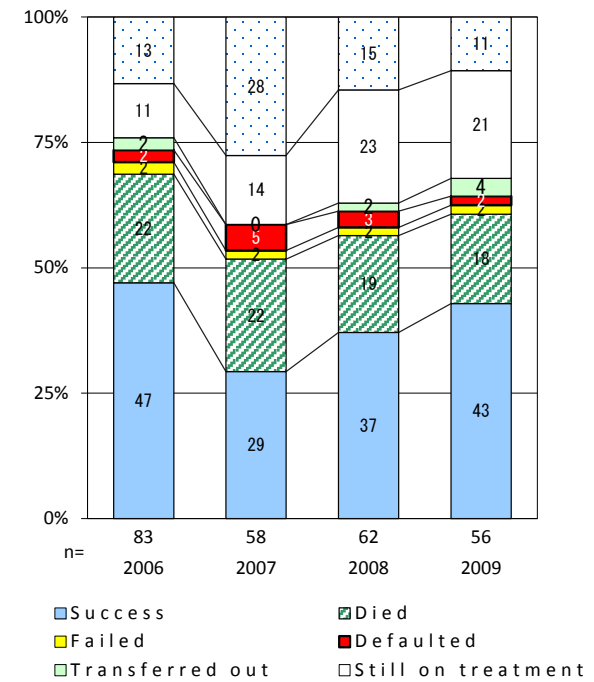
Proportion of Tx with HRZ-E/S among all forms of TB cases aged under 80 yrs‡



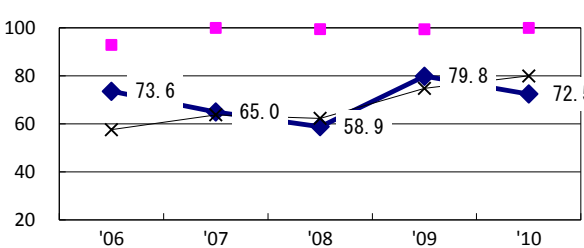
Proportion of bacillary cases among pul. TB



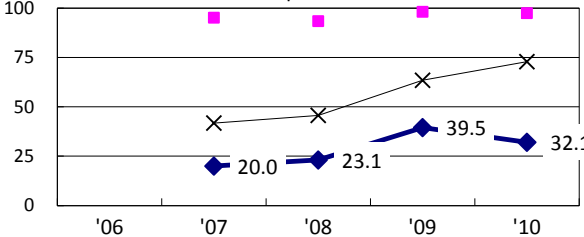
Treatment outcomes of new sputum smear-pos. pul. cases registered in 2006-2009



Proportion of culture results obtained among pul. TB



Proportion of DST results obtained among culture pos. pul. TB



◆ Niigata ■ Best prefec./city × Japan

	'06	'07	'08	'09	'10	Year of registration	'07	'08	'09	Japan
†Excluding unknown delay(%)	1.0	22.3	22.1	20.8	30.9	Median days of treatment (all forms)	293	282	282	(270)
‡Excluding unknown Tx (%)	3.2	10.0	6.3	2.0	4.2	Median days of hospitalization (pul.TB)	59	66	53	(68)