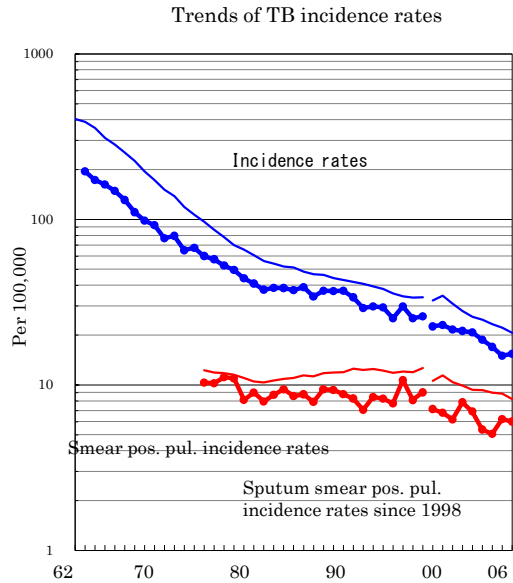
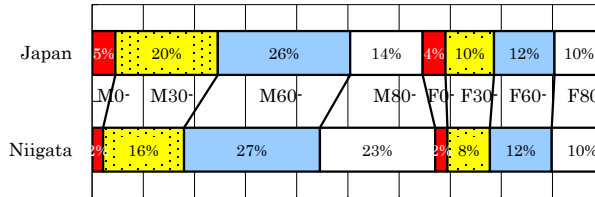


Niigata

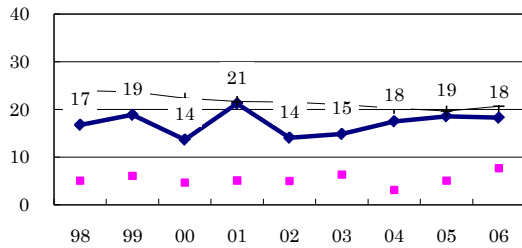
TB statistics in 2006		
Population	2,418,328	Niigata (Japan)
Foreigners' TB	6	1.6% (3.5%)
Estimated homeless TB among male cases aged 30-59 yrs	2	3.4% (8.9%)

Trends	02	03	04	05	06
Notified cases	512	462	416	365	373
Rate per 100,000	20.8	18.8	17.0	15.0	15.4
Sputum smear pos. pul. cases	170	132	124	151	145
Rate per 100,000	6.9	5.4	5.1	6.2	6.0

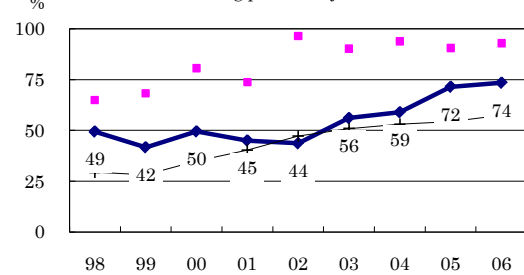
Age-sex composition of notified cases, 2006



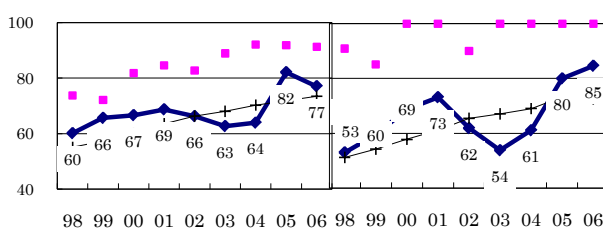
Proportion of cases with long diagnosis delay (>3M) among symptomatic pul. cases



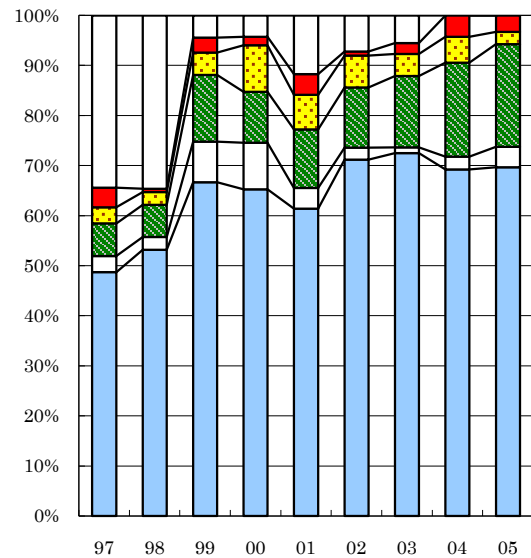
Proportion of positive or negative culture results among pulmonary cases



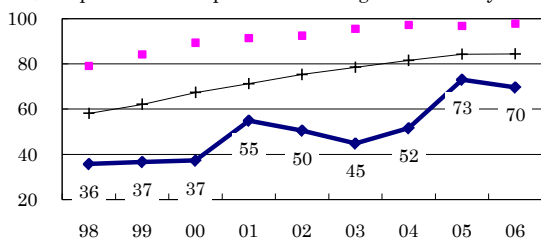
Proportion of bacillary cases among pulmonary cases



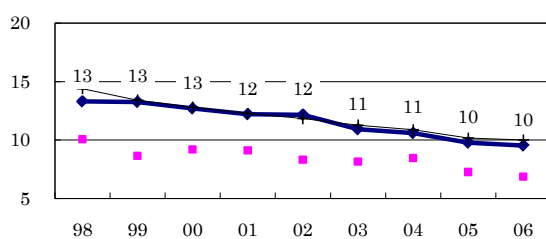
Treatment outcomes of new sputum smear-positive cases, 1997-2005 cohorts



Proportion of treatment with HRZ-E/S among new sputum smear-positive cases aged under 80 yrs



Estimated average treatment duration



	n=	154	156	135	118	145	125	91	117	122
Completed	49	53	67	65	61	71	73	69	70	
Others	3	3	8	9	4	2	1	3	4	
Died	6	6	13	10	12	12	14	19	20	
Failed	3	3	4	9	7	6	4	5	2	
Defaulted	4	1	3	2	4	1	2	4	3	
Unknown	34	35	4	4	12	7	5	0	0	

—●— Niigata —■— Best prefecture/city —+— Japan