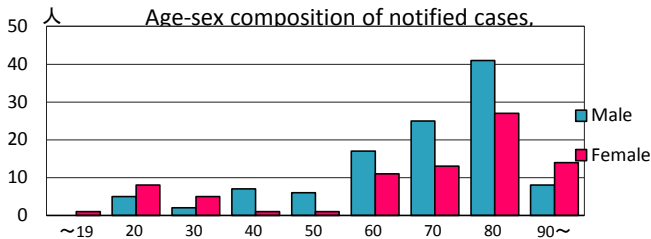
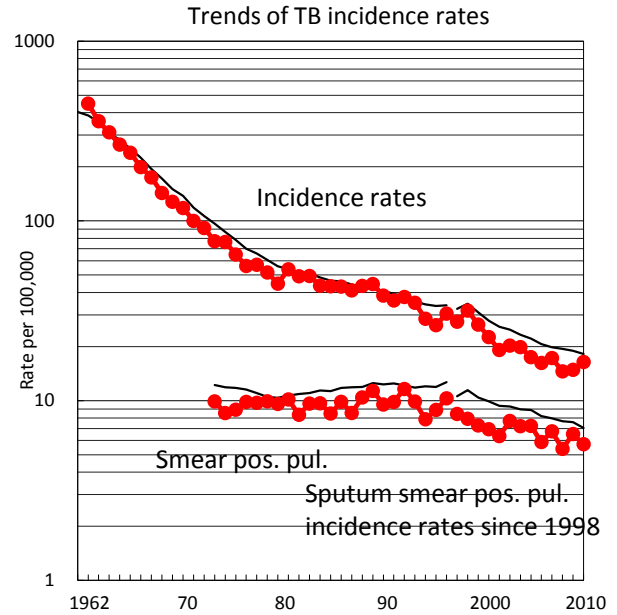
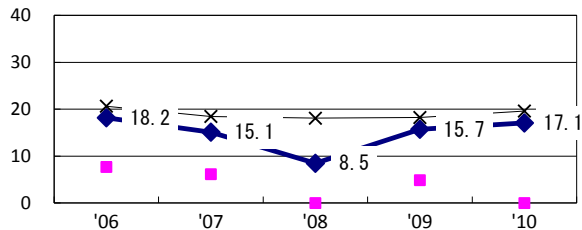


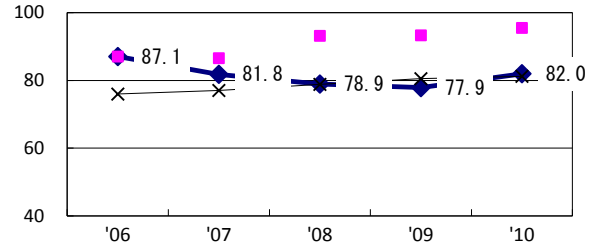
| TB statistics in 2010   |           |      |      |         |      |
|---|-----------|------|------|---------|------|
| Population  | 1,170,040 |      |      | (Japan) |      |
| Foreign borns   | 4         | 2.1% |      | (4.1%)  |      |
| TB patients with homeless history   | 1         | 0.5% |      | (1.4%)  |      |
| Jobless TB patients getting public assistance, proportion among male TB patients aged 35-59 yrs | 1         | 6.7% |      | (10.8%) |      |
| Trends  | '06       | '07  | '08  | '09     | '10  |
| Notified cases  | 190       | 202  | 170  | 173     | 192  |
| Rate per 100,000  | 16.2      | 17.3 | 14.6 | 14.9    | 16.4 |
| Sputum smear pos. pul. cases  | 69        | 79   | 63   | 76      | 67   |
| Rate per 100,000  | 5.9       | 6.8  | 5.4  | 6.5     | 5.7  |



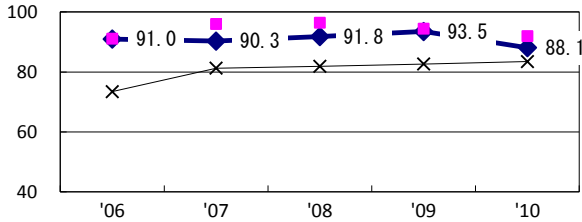
Proportion of cases with long case finding delay (>3M) among symptomatic pul. TB †



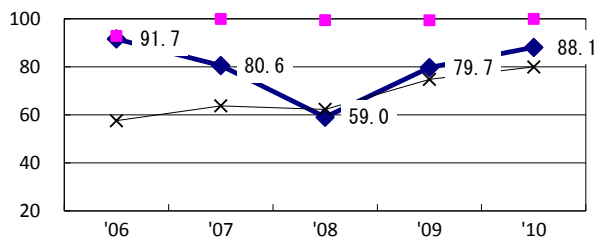
Proportion of Tx with HRZ-E/S among all forms of TB cases aged under 80 yrs\*



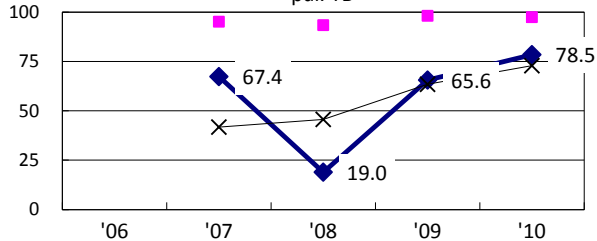
Proportion of bacillary cases among pul. TB



Proportion of culture results obtained among pul. TB

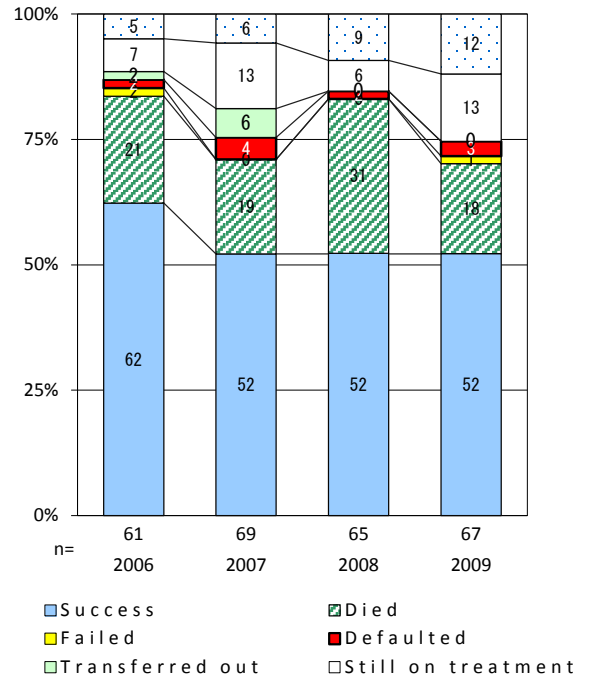


Proportion of DST results obtained among culture pos. pul. TB



—◆— Ishikawa    —■— Best prefec./city    —×— Japan

Treatment outcomes of new sputum smear-pos. pul. cases registered in 2006-2009



|                             | '06 | '07  | '08  | '09  | '10  | Year of registration                    | '07 | '08 | '09 | Japan |
|-----------------------------|-----|------|------|------|------|---|-----|-----|-----|-------|
| †Excluding unknown delay(%) | 0.0 | 27.1 | 39.2 | 23.3 | 28.7 | Median days of treatment (all forms)    | 261 | 272 | 275 | (270) |
| ‡Excluding unknown Tx (%)   | 0.9 | 2.7  | 5.0  | 1.0  | 2.0  | Median days of hospitalization (pul.TB) | 95  | 88  | 89  | (68)  |