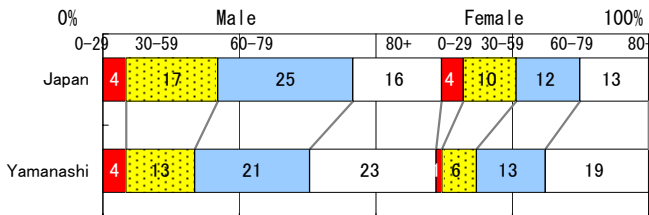


Yamanashi

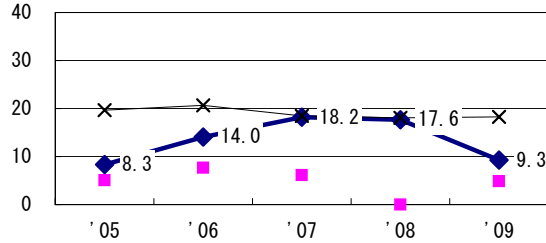
| TB statistics in 2009 | | |
|---|---------|--------------|
| Population | 866,931 | (Japan) |
| Foreigners | 6 | 6.3% (3.9%) |
| Estimated homeless or poor TB among male cases aged 30-59 yrs | 0 | 0.0% (12.0%) |

| Trends | '05 | '06 | '07 | '08 | '09 |
|------------------------------|------|------|------|------|------|
| Notified cases | 129 | 115 | 105 | 98 | 95 |
| Rate per 100,000 | 14.6 | 13.1 | 12.0 | 11.3 | 11.0 |
| Sputum smear pos. pul. cases | 47 | 53 | 45 | 47 | 43 |
| Rate per 100,000 | 5.3 | 6.0 | 5.1 | 5.4 | 5.0 |

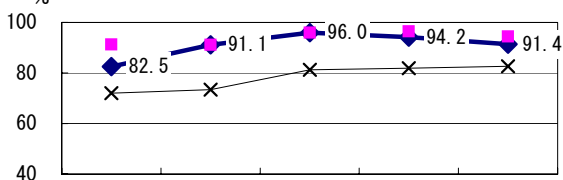
Age-sex composition of notified cases, 2009



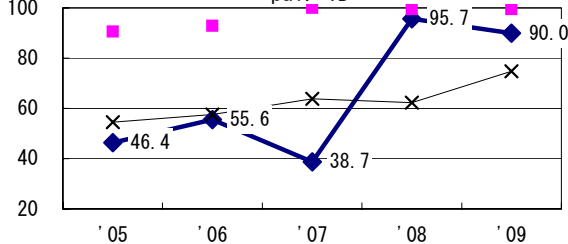
Proportion of cases with long case finding delay (>3M) among symptomatic pul. TB †



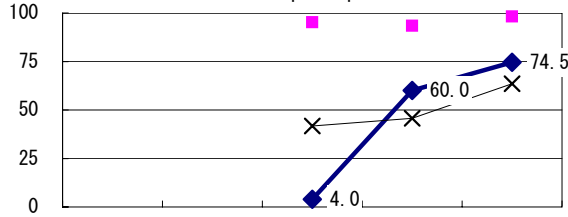
Proportion of bacillary cases among pul. TB



Proportion of culture results obtained among pul. TB

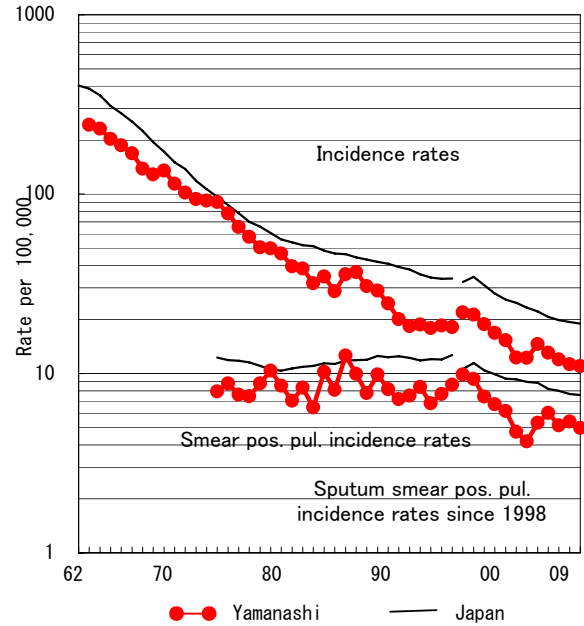


Proportion of DST results obtained among culture pos. pul. TB

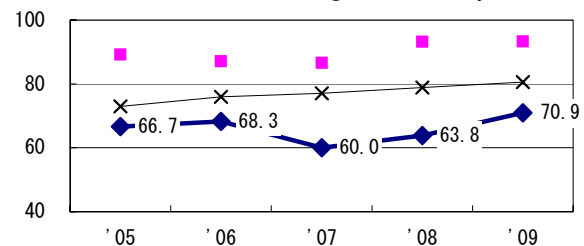


◆ Yamanashi ■ Best prefec./city × Japan

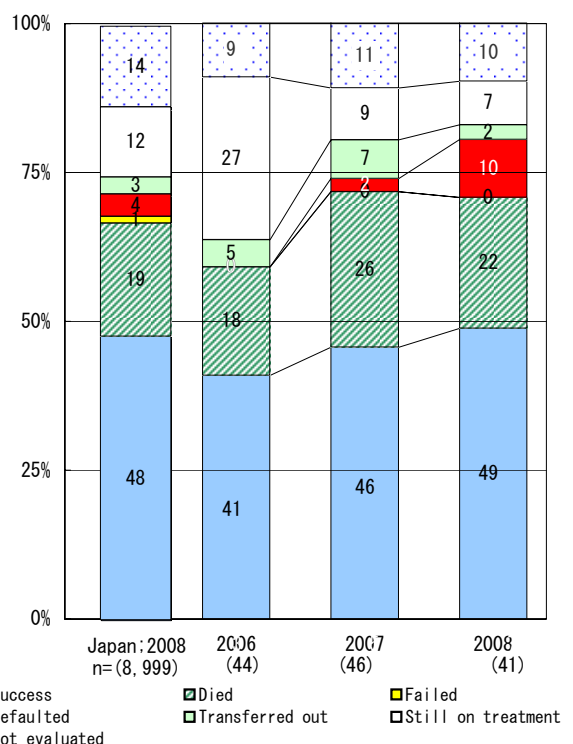
Trends of TB incidence rates



Proportion of Tx with HRZ-E/S among all forms of TB cases aged under 80 yrs ‡



Treatment outcomes of new sputum smear-pos. pul. cases registered in 2006-2008



■ Success ■ Died ■ Failed
 ■ Defaulted ■ Transferred out ■ Still on treatment
 □ Not evaluated

| | '05 | '06 | '07 | '08 | '09 |
|---------------------------|------|------|------|-----|-----|
| † Excluding unk delay (%) | 0.0 | 1.7 | 25.4 | 7.3 | 5.3 |
| ‡ Excluding unk Tx (%) | 17.9 | 19.2 | 4.5 | 1.7 | 0.0 |

| Registered year | '07 | '08 | Japan |
|--|-----|-----|-------|
| Median days of treatment (all forms) | 267 | 275 | (272) |
| Median days of hospitalization (pul. TB) | 75 | 84 | (67) |