

【Childhood】

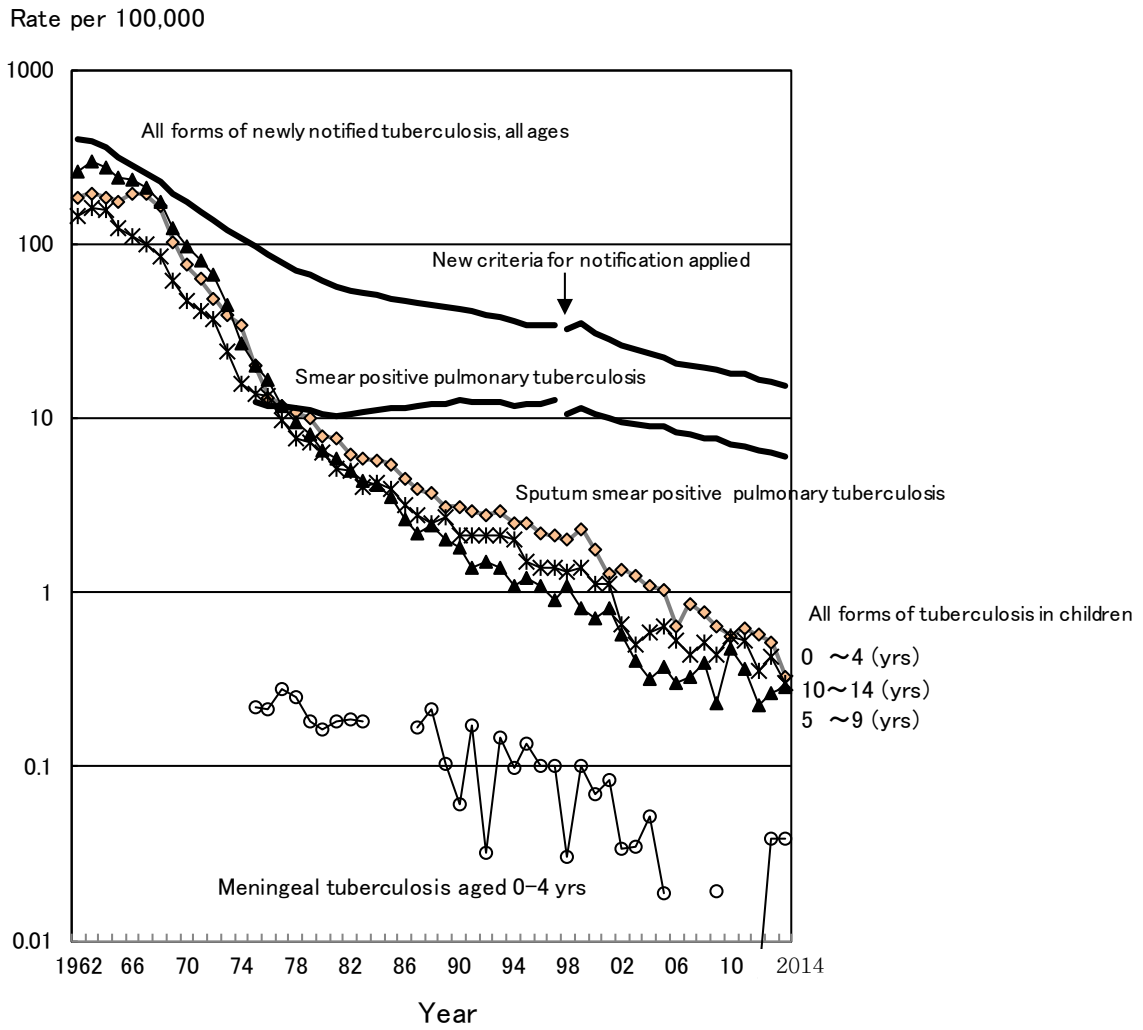


Fig. 1 Trend of childhood tuberculosis notification rates, per 100,000 population, 1962-2014

Table 1 Number and rates of childhood tuberculosis patients and specific extra-pulmonary tuberculosis, 1965–2014

Year	Newly notified tuberculosis aged 0–14 yrs		No. of meningeal tuberculosis		No. of miliary tuberculosis	
	Number	Rate	0–14 yrs	0–4 yrs (Rate)	0–14 yrs	0–4 yrs (Rate)
1965	44,180	175.6	—	—	—	—
1970	18,197	73.4	—	—	—	—
1975	4,905	18.0	28	22 (0.221)	—	—
1980	1,893	6.9	22	14 (0.164)	—	—
1985	1,088	4.2	—	—	—	—
1990	518	2.3	9	4 (0.061)	10	8 (0.122)
1995	340	1.7	8	8 (0.136)	8	8 (0.136)
2000	220	1.2	7	4 (0.069)	3	3 (0.052)
2005	117	0.67	3	1 (0.018)	3	1 (0.018)
2006	85	0.49	0	0	1	1 (0.018)
2007	92	0.53	0	0	0	0
2008	95	0.55	0	0	1	1 (0.019)
2009	73	0.43	1	1 (0.019)	4	3 (0.056)
2010	89	0.53	0	0	0	0
2011	84	0.50	1	0	2	1(0.019)
2012	63	0.38	1	1(0.019)	0	0
2013	66	0.40	2	2(0.038)	0	0
2014	49	0.30	5	2(0.038)	2	1(0.019)

Extra-pulmonary tuberculosis: Cases are counted independently.

Rate: per 100,000

—: Not available

Table 2 Number of newly notified childhood tuberculosis patients by age and mode of detection, 2014

	Age (yrs)														Total	
	0	1	2	3	4	5	6	7	8	9	10	11	12	13		14
School mass-investigation	0	0	0	0	0	0	0	0	0	0	0	0	0	1	0	1
Family contact investigation	1	4	0	1	1	0	5	1	3	1	0	1	1	5	1	25
Other contact investigation	0	0	0	0	0	0	0	0	0	0	0	1	0	0	0	1
At clinics/hospitals (with symptoms)	3	3	0	1	1	1	1	0	0	3	0	1	2	0	3	19
Others	1	1	0	0	0	0	0	0	0	0	0	0	0	1	0	3
Total	5	8	0	2	2	1	6	1	3	4	0	3	3	7	4	49

Table 3 Proportion of BCG vaccinated cases among newly notified childhood tuberculosis patients and LTBI cases, 2014

	Age in years										5-9	10-14	Total	
	Age in months					0	1	2	3	4				Total
	0-2	3-5	6-8	9-11	Total									
Tuberculosis cases	1	1	3	0	5	8	0	2	2	17	15	17	49	
BCG vaccinated	0	0	3	0	3	3	0	2	1	9	8	6	23	
BCG not vaccinated	1	1	0	0	2	1	0	0	0	3	0	0	3	
BCG unknown	0	0	0	0	0	4	0	0	1	5	7	11	23	
BCG vaccinated (%)*	0.0	0.0	100.0	-	60.0	75.0	-	100.0	100.0	75.0	100.0	100.0	88.5	
LTBI	40	59	156	44	299	63	58	48	46	514	140	86	740	
BCG vaccinated	0	19	97	25	141	37	42	27	27	274	94	39	407	
BCG not vaccinated	26	16	8	1	51	3	2	1	2	59	2	1	62	
BCG unknown	14	24	51	18	107	23	14	20	17	181	44	46	271	
BCG vaccinated (%)*	0.0	54.3	92.4	96.2	73.4	92.5	95.5	96.4	93.1	82.3	97.9	97.5	86.8	

LTBI : Latent Tuberculosis Infection

*%: Proportion of BCG vaccinated cases among all TB/LTBI cases excluding BCG unknown

Previous table Trend of newly notified childhood TB patients by age and calendar year, 1998-2014

Year	Age (yrs)															Total
	0	1	2	3	4	5	6	7	8	9	10	11	12	13	14	
1998	31	39	15	18	16	12	18	14	13	10	7	7	29	18	27	274
1999	43	35	24	23	9	10	15	8	7	10	8	9	27	27	25	280
2000	29	27	19	14	14	8	10	13	5	7	14	11	21	12	16	220
2001	27	18	14	9	7	4	14	11	11	8	8	4	23	18	19	195
2002	30	21	14	12	3	9	8	5	6	6	2	3	14	15	7	155
2003	23	15	17	5	12	9	5	4	1	5	4	3	4	10	10	127
2004	20	18	9	5	10	5	2	3	5	4	3	4	12	6	11	117
2005	23	11	5	13	4	4	3	7	5	3	6	5	7	13	8	117
2006	9	6	8	6	6	6	3	3	2	4	3	4	3	13	9	85
2007	21	5	7	12	2	6	5	2	4	2	2	4	4	7	9	92
2008	11	14	11	4	1	2	6	2	5	8	2	5	7	8	9	95
2009	15	8	6	3	2	4	4	1	3	1	6	1	5	8	6	73
2010	10	6	5	5	4	6	6	8	3	3	5	4	4	7	13	89
2011	5	7	6	7	8	3	7	3	3	4	6	4	5	5	11	84
2012	8	6	6	7	3	2	2	3	1	4	3	2	3	7	6	63
2013	7	4	5	4	7	3	3	2	1	5	3	4	7	3	8	66
2014	5	8		2	2	1	6	1	3	4		3	3	7	4	49

School mass-examination was revised in 2003.

Upper-limitation age of BCG vaccination was changed from 4 years to 6 months, with introduction of direct vaccination policy in 2005.

Previous table Number of prefectures by number of childhood TB patients, 1980–2014

Year	Number of childhood TB patients							Total
	0	1	2~4	5~9	10~14	15~19	20+(cases)	
1980	0	0	1	6	7	4	29	47
1985	0	0	5	11	10	2	19	47
1990	0	3	13	11	8	2	10	47
1995	3	6	14	13	4	2	5	47
2000	9	8	13	10	3	1	3	47
2005	17	8	13	7	2	0	0	47
2006	19	13	8	6	1	0	0	47
2007	17	12	11	5	2	0	0	47
2008	14	12	16	4	1	0	0	47
2009	27	6	8	4	2	0	0	47
2010	15	14	14	3	0	0	1	47
2011	19	11	12	4	0	0	1	47
2012	22	11	11	3	0	0	0	47
2013	19	14	9	5	0	0	0	47
2014	22	14	9	2	0	0	0	47

[Elderly]

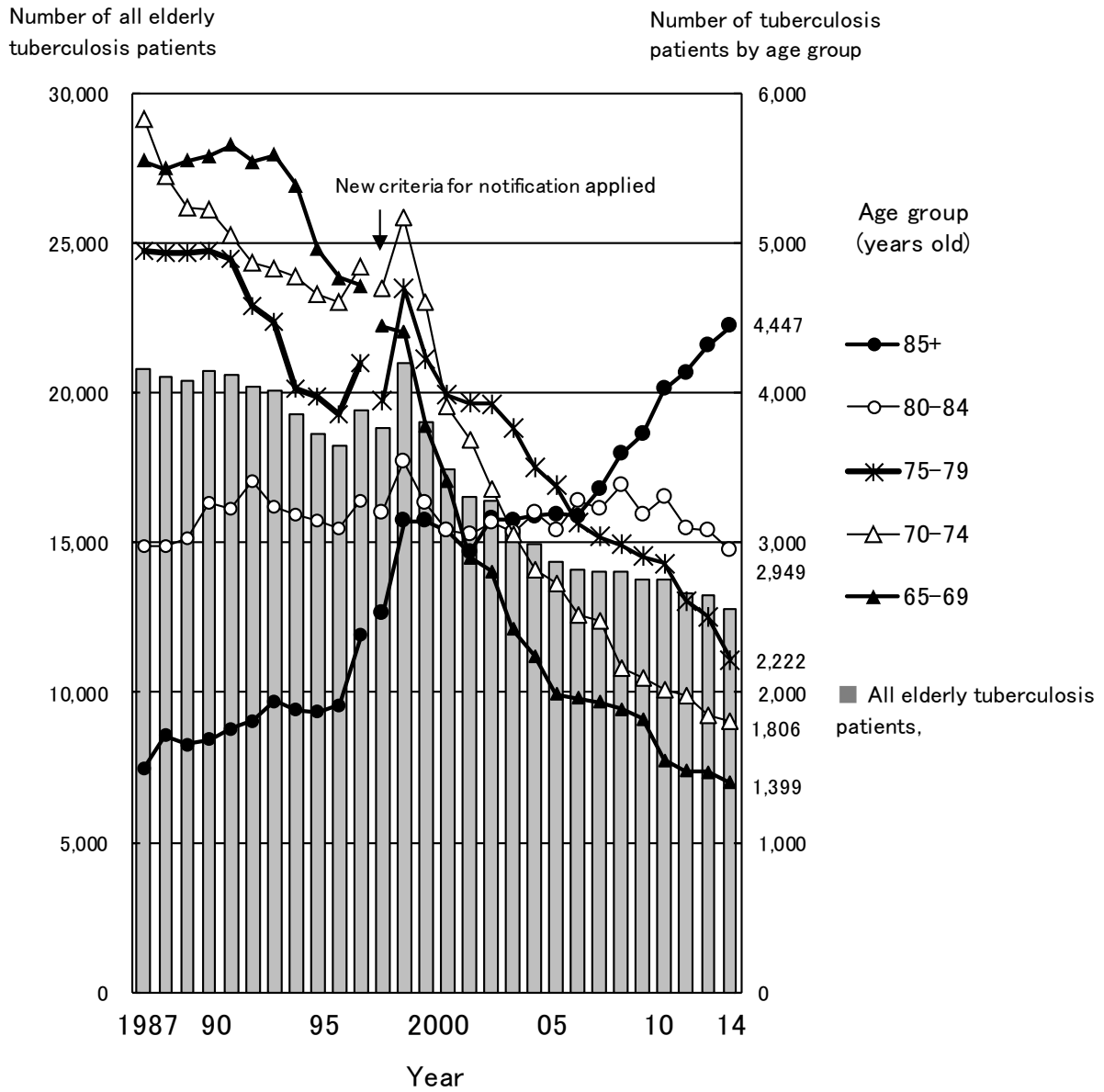


Fig.2 Annual trend of the number of newly notified elderly tuberculosis patients by age group, 1987–2014

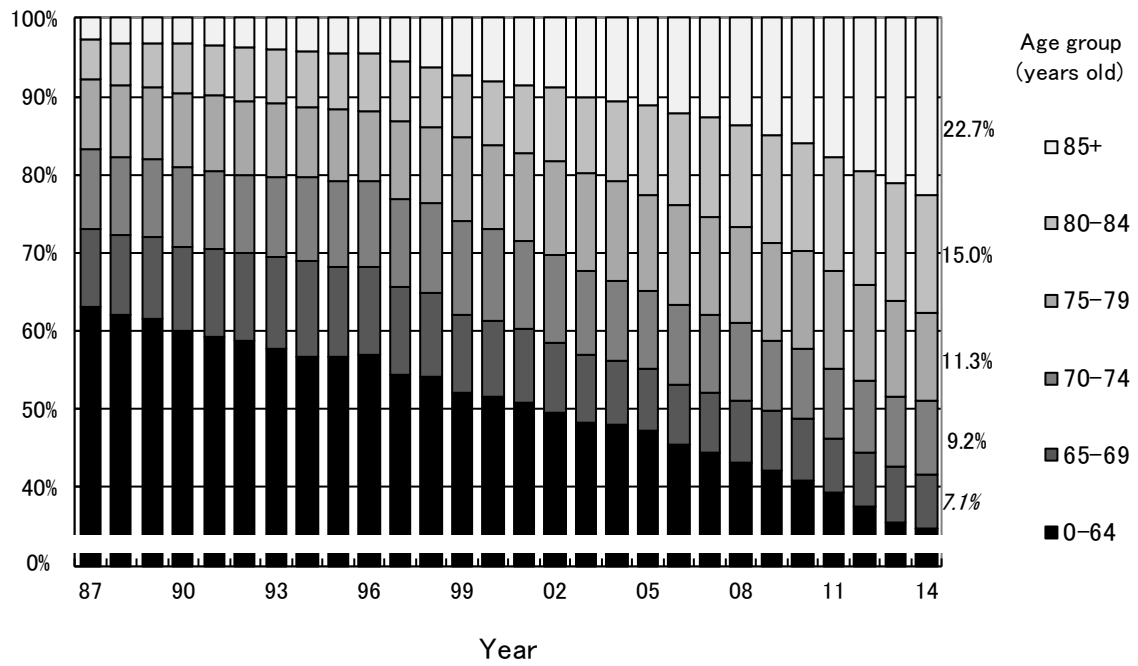


Fig.3 Annual trend of the proportion of elderly tuberculosis patients among all newly notified tuberculosis patients, 1987–2014

Rate per 100,000 population

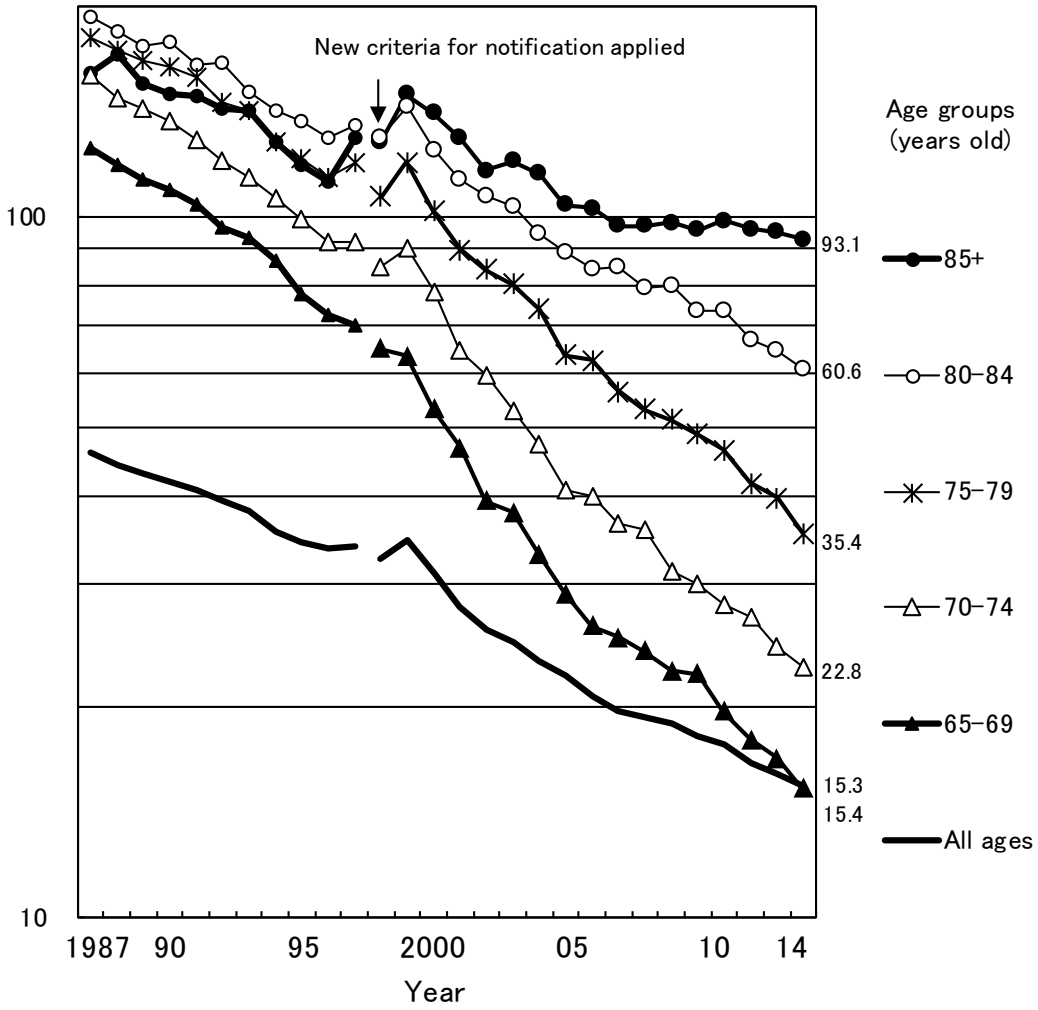


Fig.4 Annual trend of elderly tuberculosis notification rates (per 100,000 population) among the elderly population, by age group, all forms, 1987-2014

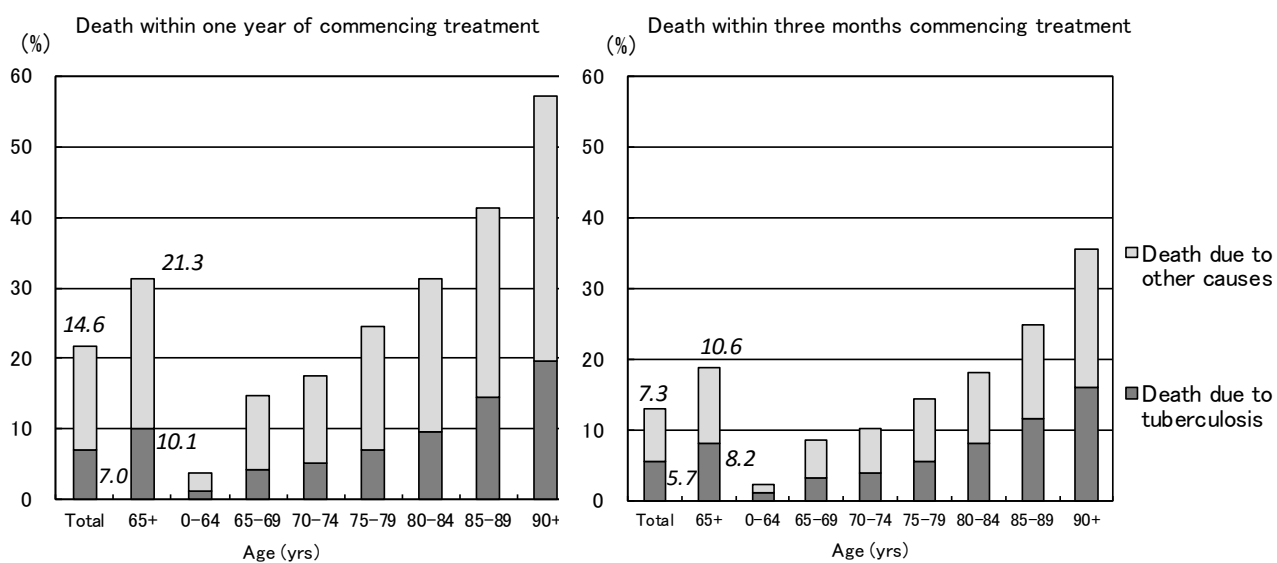


Fig.5 Proportion of death among newly notified tuberculosis patients in 2013 by age group, cause of death and duration till death

* The date when tuberculosis diagnosis was made was used as the date treatment was commenced for those who died before the start of treatment.

Table 4 Comparison of epidemiological indicators of newly notified tuberculosis patients by sex and age group, 2014

		Age group (years old)					
		All ages	Youth and middle-aged	The elderly			
				15-64	all 65+	65-74	75-84
Number of newly notified tuberculosis patients (all forms, n)	Total	19,615	6,743	12,823	3,205	5,171	4,447
	Male	12,005	4,195	7,787	2,202	3,191	2,394
	Female	7,610	2,548	5,036	1,003	1,980	2,053
Tuberculosis notification rate (all forms, per 100,000 population)	Total	15.4	8.7	38.9	18.8	46.4	93.1
	Male	19.4	10.7	54.7	27.2	67.7	169.5
	Female	11.7	6.6	26.8	11.2	30.8	61.0
Number of newly notified extra-pulmonary tuberculosis patients (n)	Total	4,466	1,234	3,218	757	1,388	1,073
	Male	2,343	655	1,677	399	748	530
	Female	2,123	579	1,541	358	640	543
Proportion of extra-pulmonary tuberculosis patients among newly notified tuberculosis patients (%)	Total	22.8	18.3	25.1	23.6	26.8	24.1
	Male	19.5	15.6	21.5	18.1	23.4	22.1
	Female	27.9	22.7	30.6	35.7	32.3	26.4
Number of newly notified pulmonary tuberculosis patients (n)	Total	15,149	5,509	9,605	2,448	3,783	3,374
	Male	9,662	3,540	6,110	1,803	2,443	1,864
	Female	5,487	1,969	3,495	645	1,340	1,510
Proportion of pulmonary tuberculosis patients among newly notified tuberculosis patients (%)	Total	77.2	81.7	74.9	76.4	73.2	75.9
	Male	80.5	84.4	78.5	81.9	76.6	77.9
	Female	72.1	77.3	69.4	64.3	67.7	73.6
Proportion of bacteriologically positive tuberculosis patients among all pulmonary tuberculosis patients (%)	Total	85.3	76.2	90.7	87.3	90.3	93.5
	Male	86.2	78.8	90.5	88.9	89.8	93.2
	Female	83.7	71.6	90.8	82.8	91.3	93.9
Proportion of sputum-smear positive pulmonary tuberculosis patients among all pulmonary tuberculosis patients (%)	Total	50.5	40.7	56.3	50.0	57.7	59.4
	Male	52.2	43.9	57.2	52.2	58.6	60.0
	Female	47.5	34.8	54.8	43.7	56.0	58.6
Proportion of cavitory pulmonary tuberculosis patients among all pulmonary tuberculosis patients (%)	Total	31.0	34.8	29.0	34.2	29.7	24.3
	Male	34.9	39.7	32.2	37.9	31.5	27.6
	Female	24.2	26.1	23.3	23.6	26.5	20.3
Proportion of far-advanced cavitory pulmonary tuberculosis patients among all pulmonary tuberculosis patients (%)	Total	2.0	2.7	1.6	2.9	1.4	1.0
	Male	2.4	3.1	1.9	3.2	1.6	1.2
	Female	1.4	1.9	1.1	2.0	1.0	0.7
Proportion of symptomatic pulmonary tuberculosis patients upon diagnosis among all pulmonary tuberculosis (%)	Total	73.9	62.2	80.7	73.3	80.1	86.7
	Male	74.0	63.4	80.2	73.7	79.8	87.2
	Female	73.6	60.2	81.5	72.1	80.8	86.0
Proportion of pulmonary tuberculosis patients with only symptoms other than respiratory symptoms among symptomatic pulmonary tuberculosis patients (%)	Total	24.3	19.4	26.5	22.7	26.8	28.5
	Male	22.5	18.7	24.3	22.6	25.9	23.8
	Female	27.5	20.8	30.2	22.8	28.3	34.5
Proportion of patient delay of two months or more among symptomatic pulmonary tuberculosis patients (%)*	Total	18.8	28.2	14.5	18.4	15.4	11.2
	Male	19.8	29.4	15.4	20.5	14.9	12.0
	Female	17.0	26.2	12.9	13.0	16.3	10.1
Proportion of doctor delay of one month or more among symptomatic pulmonary tuberculosis patients (%)*	Total	21.6	19.5	22.6	24.3	23.6	20.5
	Male	20.9	17.6	22.4	22.3	23.7	21.0
	Female	23.0	23.2	22.9	29.9	23.3	19.9
Proportion of total delay of three months or more among symptomatic pulmonary tuberculosis patients (%)*	Total	19.0	26.0	15.9	22.0	15.8	12.2
	Male	19.7	25.6	17.0	22.5	16.7	12.7
	Female	17.9	26.5	14.0	20.6	14.1	11.5
Proportion of tuberculosis patients detected as out-patient for other diseases among newly notified tuberculosis patients (%)	Total	11.3	6.6	13.8	15.7	15.4	10.5
	Male	11.7	6.5	14.5	15.0	16.5	11.4
	Female	10.6	6.6	12.7	17.3	13.6	9.5
Proportion of tuberculosis patients detected as in-patient for other diseases among newly notified tuberculosis patients (%)	Total	13.2	4.4	17.9	11.8	19.0	21.0
	Male	12.8	5.3	16.9	11.9	18.5	19.5
	Female	13.8	2.7	19.5	11.8	19.8	22.8

Subjects: * Excluding the patients of unknown delays

Previous table Number and proportion of elderly TB by prefecture and city, 2014

65+ (yrs)			85+ (yrs)		
Area	<i>n</i>	%	Area	<i>n</i>	%
Japan	12,823	65.4	Japan	4,447	22.7
Tottori	73	83.9	Yamanashi	31	40.3
Wakayama	157	82.6	Nagano	66	38.8
Kumamoto	150	82.0	Tottori	31	35.6
Yamaguchi	132	81.0	Yamaguchi	56	34.4
Yamanashi	62	80.5	Shimane	32	33.7
Fukui	86	79.6	Kumamoto	61	33.3
Kagawa	134	78.4	Hiroshima	83	33.1
Miyagi	83	77.6	Ishikawa	49	32.9
Kumamoto city	76	77.6	Yamagata	39	32.8
Tokushima	96	77.4	Miyagi	35	32.7
Kyoto	137	77.4	Wakayama	62	32.6
Oita	157	77.3	Nagasaki	99	32.2
Ehime	145	77.1	Fukui	34	31.5
Okayama	124	76.5	Oita	62	30.5
Yamagata	91	76.5	Kagoshima	84	29.9
.
Sagamihara city	57	59.4	Saitama city	34	18.1
Yokohama city	341	59.0	Tokyo	107	18.0
Osaka city	569	57.6	Tokyo 23wards	317	16.4
Saitama	468	56.4	Chiba	116	16.1
Tokyo	335	56.2	Sakai city	29	16.0
Chiba city	85	55.2	Yokohama city	90	15.6
Kawasaki city	126	55.0	Saitama	119	14.3
Saitama city	103	54.8	Osaka city	139	14.1
Chiba	378	52.4	Chiba city	21	13.6
Tokyo 23wards	943	48.7	Kawasaki city	31	13.5

Descending order by proportion of elderly TB patients