

【Case Finding】

Table1 Proportion of mode of detection among newly notified tuberculosis patients, 2007-2014

Year	Newly notified TB patients			Mass screening								Contact examination				Medical institutions						Others		Unknown			
	n	n	%	Schools	Residents	Employees	Facilities	Family	Others	Outpatients with TB symptoms(*1)	Inpatients with other diseases	Outpatients with other diseases	Others	Unknown													
2007	25,311	537	2.1	217	0.9	636	2.5	1,931	7.6	145	0.6	355	1.4	370	1.5	16,997	67.2	2,031	8.0	1,611	6.4	340	1.3	141	0.6		
2008	24,760	639	2.6	195	0.8	486	2.0	1,877	7.6	144	0.6	325	1.3	410	1.7	15,347	62.0	2,681	10.8	2,100	8.5	316	1.3	240	1.0		
2009	24,170	611	2.5	197	0.8	550	2.3	1,749	7.2	136	0.6	324	1.3	311	1.3	14,864	61.5	2,752	11.4	2,220	9.2	301	1.2	155	0.6		
2010	23,261	507	2.2	244	1.0	544	2.3	1,618	7.0	128	0.6	313	1.3	350	1.5	13,901	59.8	2,792	12.0	2,305	9.9	333	1.4	226	1.0		
2011	22,681	470	2.1	188	0.8	497	2.2	1,531	6.8	126	0.6	354	1.6	482	2.1	13,177	58.1	2,916	12.9	2,515	11.1	330	1.5	95	0.4		
2012	21,283	409	1.9	163	0.8	498	2.3	1,424	6.7	121	0.6	315	1.5	374	1.8	12,284	57.7	2,941	13.8	2,312	10.9	357	1.7	85	0.4		
2013	20,495	413	2.0	172	0.8	455	2.2	1,246	6.1	89	0.4	314	1.5	333	1.6	11,978	58.4	2,745	13.4	2,306	11.3	336	1.6	108	0.5		
2014	19,615	344	1.8	201	1.0	404	2.1	1,221	6.2	92	0.5	303	1.5	333	1.7	11,441	58.3	2,591	13.2	2,210	11.3	328	1.7	147	0.7		
2014																											
Age																											
0~9歳	32	0	0.0	0	0.0	0	0.0	0	0.0	0	0.0	17	53.1	0	0.0	13	40.6	0	0.0	0	0.0	1	3.1	1	3.1		
10~19	185	4	2.2	54	29.2	0	0.0	3	1.6	0	0.0	31	16.8	10	5.4	68	36.8	1	0.5	0	0.0	11	5.9	3	1.6		
20~29	1,188	24	2.0	131	11.0	4	0.3	247	20.8	6	0.5	29	2.4	58	4.9	602	50.7	16	1.3	15	1.3	50	4.2	6	0.5		
30~39	1,235	24	1.9	11	0.9	3	0.2	281	22.8	4	0.3	39	3.2	55	4.5	695	56.3	34	2.8	56	4.5	23	1.9	10	0.8		
40~49	1,440	44	3.1	3	0.2	28	1.9	292	20.3	6	0.4	42	2.9	57	4.0	799	55.5	51	3.5	76	5.3	26	1.8	16	1.1		
50~59	1,514	52	3.4	0	0.0	32	2.1	223	14.7	8	0.5	35	2.3	54	3.6	865	57.1	84	5.5	110	7.3	37	2.4	14	0.9		
60~69	2,597	62	2.4	1	0.0	74	2.8	146	5.6	9	0.3	39	1.5	42	1.6	1,499	57.7	257	9.9	393	15.1	51	2.0	24	0.9		
70~79	4,028	62	1.5	0	0.0	149	3.7	25	0.6	15	0.4	37	0.9	30	0.7	2,336	58.0	615	15.3	672	16.7	58	1.4	29	0.7		
80~89	5,753	56	1.0	1	0.0	98	1.7	4	0.1	29	0.5	31	0.5	19	0.3	3,542	61.6	1,135	19.7	747	13.0	63	1.1	28	0.5		
90~	1,643	16	1.0	0	0.0	16	1.0	0	0.0	15	0.9	3	0.2	8	0.5	1,022	62.2	398	24.2	141	8.6	8	0.5	16	1.0		

TB: tuberculosis

TB symptoms: Respiratory symptoms such as cough, sputum expectoration, bloody sputum, and hemoptysis; and other symptoms such as wheezing, chest pain, back pain, dyspnea, fever, night sweating, fatigue tendency, and weight loss.

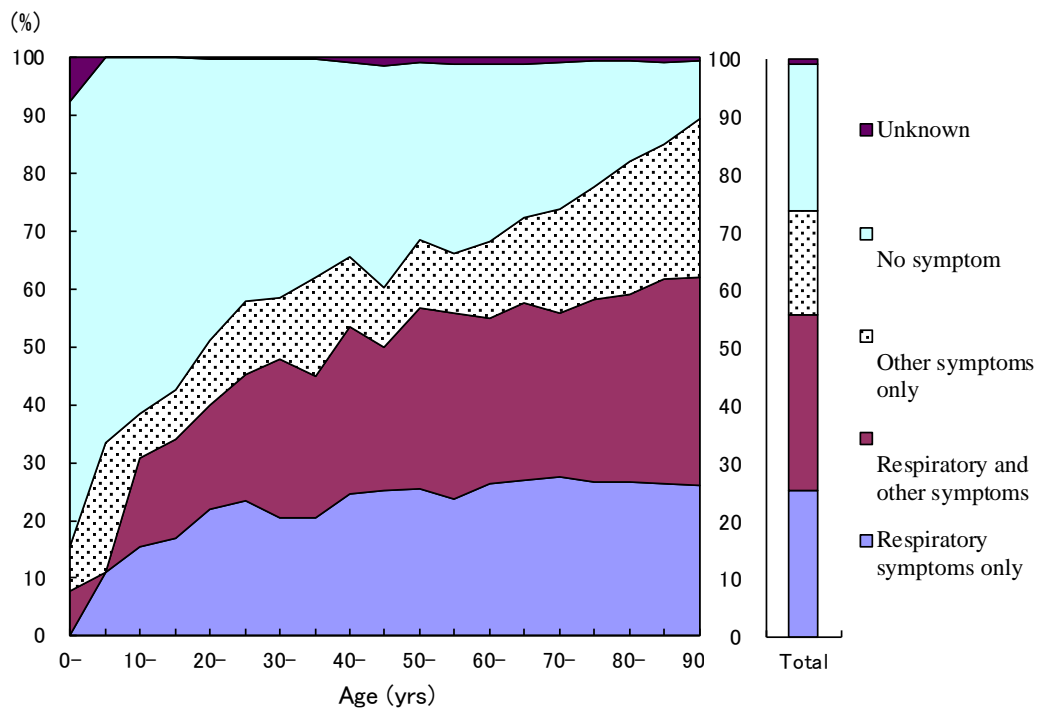


Fig.1 Proportion of symptoms among newly notified pulmonary tuberculosis patients by 5-years age group, in 2014

Respiratory symptoms include cough, sputum expectoration, bloody sputum, and hemoptysis. Other symptoms include wheezing, chest pain, back pain, dyspnea, fever, night sweating, fatigue tendency, and weight loss.

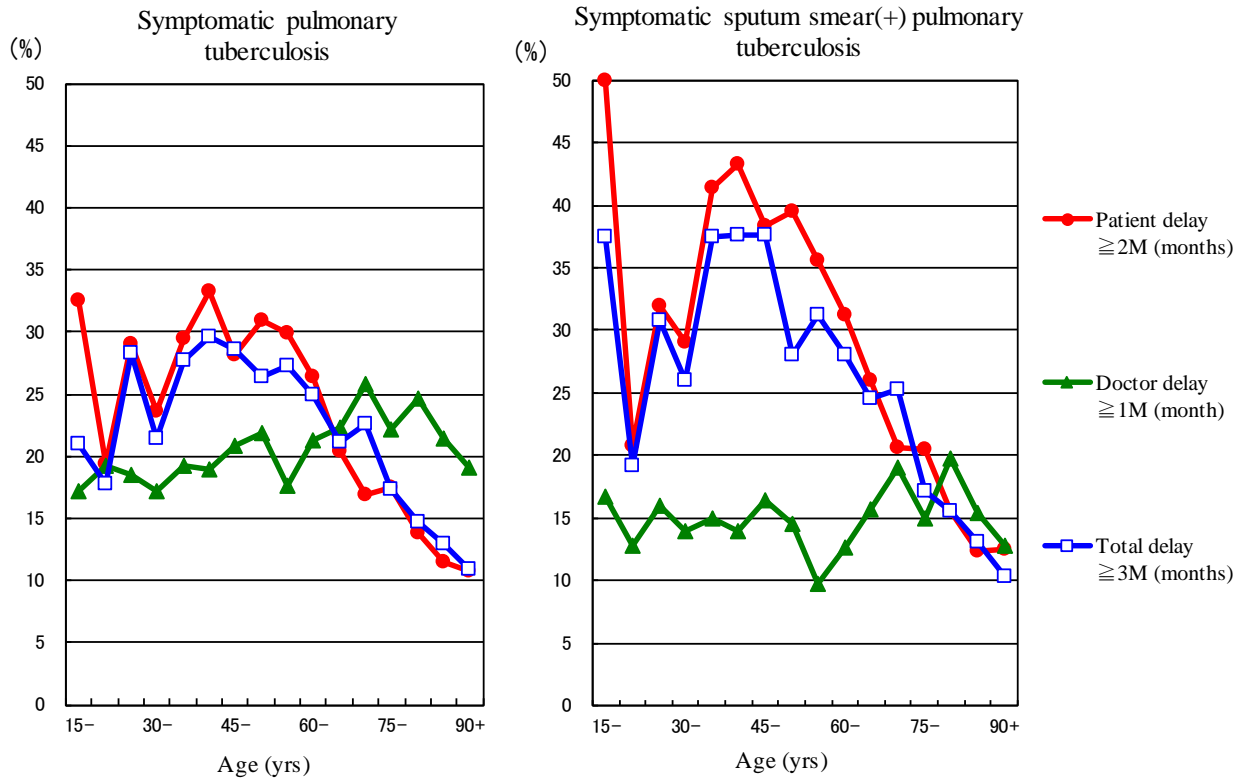


Fig.2 Proportion of patient delay, doctor delay and total delay among symptomatic pulmonary tuberculosis patients by 5-year age group, in 2014

Patient delay: time interval from the onset of symptoms to the first visit to a medical institution of 2 months or longer

Doctor delay: time interval from the first visit to a medical institution to the diagnosis of tuberculosis of 1 month or longer

Total delay: time interval from the onset of symptoms to the diagnosis of tuberculosis is 3 months or longer

Previous table Proportion of mode of detection among newly notified TB patients by age group, 2014

Age groups	Newly notified TB patients	Individual medical checkup	Mass screening				Contact examination		Medical institutions			Others	Unknown
			Schools	Residents	Employees	Facilities	Family	Others	Outpatients with TB symptoms	Inpatients with other diseases	Outpatients with other diseases		
			%	%	%	%	%	%	Outpatients with TB symptoms (*1) %	%	%		
All forms of TB													
Total	19,615	1.8	1.0	2.1	6.2	0.5	1.5	1.7	58.3	13.2	11.3	1.7	0.7
0-14	49	0.0	2.0	0.0	0.0	0.0	51.0	2.0	38.8	0.0	0.0	4.1	2.0
15-19	168	2.4	31.5	0.0	1.8	0.0	13.7	5.4	36.9	0.6	0.0	6.0	1.8
20-24	553	2.5	17.2	0.5	15.4	0.7	3.3	4.9	46.3	0.9	1.1	6.7	0.5
25-29	635	1.6	5.7	0.2	25.5	0.3	1.7	4.9	54.5	1.7	1.4	2.0	0.5
30-34	612	2.1	1.5	0.0	22.2	0.5	3.3	4.2	55.9	3.6	3.8	2.0	1.0
35-39	623	1.8	0.3	0.5	23.3	0.2	3.0	4.7	56.7	1.9	5.3	1.8	0.6
40-44	717	3.3	0.4	2.9	20.4	0.3	3.5	2.6	57.0	2.1	5.2	1.4	0.8
45-49	723	2.8	0.0	1.0	20.2	0.6	2.4	5.3	53.9	5.0	5.4	2.2	1.4
50-54	711	3.2	0.0	2.0	15.3	0.6	2.7	3.8	60.1	4.4	5.3	2.1	0.6
55-59	803	3.6	0.0	2.2	14.2	0.5	2.0	3.4	54.5	6.6	9.0	2.7	1.2
60-64	1,198	2.7	0.1	1.8	7.7	0.4	1.8	2.4	55.3	9.0	15.4	2.5	0.8
65-69	1,399	2.1	0.0	3.7	3.9	0.3	1.2	0.9	59.8	10.7	14.9	1.5	1.0
70-74	1,806	2.0	0.0	4.0	1.2	0.4	1.0	1.1	58.6	12.7	16.4	1.8	0.7
75-79	2,222	1.2	0.0	3.5	0.1	0.3	0.9	0.5	57.5	17.3	16.9	1.1	0.7
80-84	2,949	1.0	0.0	2.1	0.0	0.5	0.7	0.4	59.2	20.3	14.2	1.2	0.4
85-89	2,804	0.9	0.0	1.3	0.1	0.5	0.3	0.3	64.1	19.2	11.7	1.0	0.6
90+	1,643	1.0	0.0	1.0	0.0	0.9	0.2	0.5	62.2	24.2	8.6	0.5	1.0
(Re-count) Sputum smear positive pulmonary TB													
Total	7,651	1.3	0.4	1.4	3.6	0.4	0.3	0.5	66.0	14.0	10.1	1.4	0.7
0-14	1	0.0	0.0	0.0	0.0	0.0	0.0	0.0	100.0	0.0	0.0	0.0	0.0
15-19	36	2.8	33.3	0.0	0.0	0.0	0.0	0.0	58.3	0.0	0.0	2.8	2.8
20-24	139	2.2	12.2	0.0	14.4	0.7	0.0	0.7	63.3	1.4	2.2	2.2	0.7
25-29	190	1.1	1.6	0.5	15.3	0.0	1.1	2.1	75.8	1.1	1.1	0.0	0.5
30-34	164	1.8	0.0	0.0	15.9	0.0	1.2	1.8	68.3	3.7	3.0	2.4	1.8
35-39	177	2.8	0.0	0.6	15.8	0.0	1.1	0.6	71.2	0.6	5.1	2.3	0.0
40-44	249	3.2	0.0	2.0	11.6	0.0	0.0	0.8	73.5	0.8	4.0	2.8	1.2
45-49	231	2.2	0.0	0.9	16.0	0.9	0.4	0.9	65.8	5.6	3.5	2.2	1.7
50-54	278	3.2	0.0	1.1	10.4	0.4	1.1	0.7	73.4	5.0	2.9	1.1	0.7
55-59	319	1.9	0.0	1.3	8.8	0.0	0.0	1.6	68.0	6.0	8.8	2.8	0.9
60-64	458	2.4	0.0	1.3	5.5	0.4	0.9	0.7	67.2	7.4	11.1	2.6	0.4
65-69	552	0.5	0.0	3.3	3.1	0.4	0.2	0.4	70.8	8.9	10.1	1.4	0.9
70-74	672	1.5	0.0	2.1	1.2	0.4	0.3	0.4	65.6	10.9	14.9	1.9	0.7
75-79	906	0.9	0.0	2.1	0.2	0.1	0.3	0.4	61.3	17.9	14.9	1.1	0.8
80-84	1,276	0.9	0.0	1.3	0.0	0.2	0.2	0.3	60.7	22.6	12.9	0.9	0.1
85-89	1,281	0.5	0.0	0.7	0.1	0.6	0.1	0.2	67.4	18.9	9.9	0.9	0.7
90+	722	0.7	0.0	0.7	0.0	0.6	0.1	0.1	64.5	22.6	9.1	0.4	1.1

TB: tuberculosis

TB symptoms: Respiratory symptoms such as cough, sputum expectoration, bloody sputum, and hemoptysis; and other symptoms such as wheezing, chest pain, back pain, dyspnea, fever, night sweating, fatigue tendency, and weight loss.

Previous table Number of newly notified TB patients by occupation, sex and age group, 2014

Sex/Age group	Total	Service workers	Nurses/ Public health nurses	Medical doctors	Other medical workers	Teachers/ Nursery nurses	Pupils/ Students	Other regular workers	Other temporary /daily workers	Other self-employed	House-keepers	Infants/ Little children	Jobless/ Others	Unknown
Male	12,005	262	18	37	81	32	298	2,105	443	670	5	10	7,719	325
0-14	23	-	-	-	-	-	12	-	-	-	-	10	1	-
15-19	88	1	-	-	-	-	67	7	6	2	-	-	3	2
20-24	306	13	-	-	5	1	148	92	18	1	-	-	26	2
25-29	334	35	3	1	10	9	57	157	16	5	-	-	35	6
30-39	674	41	10	7	22	3	11	397	47	36	-	-	86	14
40-49	905	45	1	6	14	7	2	499	66	69	1	-	150	45
50-59	1,020	39	3	5	15	9	1	467	71	104	-	-	275	31
60-69	1,850	52	1	6	9	1	0	389	134	179	3	-	996	80
70-79	2,655	26	-	5	4	1	0	84	80	160	1	-	2,215	79
80+	4,150	10	-	7	2	1	0	13	5	114	-	-	3,932	66
Female	7,610	234	231	10	174	43	232	591	231	124	369	11	5,218	142
0-14	26	-	-	-	-	-	15	-	-	-	-	11	-	-
15-19	80	-	-	-	-	-	72	3	2	-	-	-	2	1
20-24	247	15	12	-	11	2	98	52	21	1	4	-	27	4
25-29	301	30	33	2	20	7	27	88	24	2	20	-	45	3
30-39	561	64	74	2	33	4	17	146	38	7	73	-	89	14
40-49	535	49	59	4	46	11	2	123	50	16	51	-	108	16
50-59	494	25	41	2	41	14	0	107	42	16	50	-	138	18
60-69	747	34	11	-	18	3	0	61	40	37	75	-	445	23
70-79	1,373	12	1	-	5	1	1	8	10	28	75	-	1,206	26
80+	3,246	5	-	-	-	1	0	3	4	17	21	-	3,158	37

Previous table Proportion of mode of detection among newly notified pulmonary TB patients aged 20-59 years by occupation, 2014

	Pulmonary TB patients	Individual medical checkup	Mass screening			Contact examination		Clinics/Hospitals			Others/Unknown
			Residents	Employees	Schools/Facilities	Family	Others	Outpatients with TB symptoms	Inpatients with other diseases	Outpatients with other diseases	
Total	4,430	3.0	1.5	22.8	3.7	3.2	4.7	50.3	3.1	4.2	3.6
Service workers	290	3.1	1.4	22.1	0.0	5.2	1.7	60.0	1.7	3.4	1.4
Medical workers(*1)	410	2.2	0.5	38.3	0.7	1.7	13.7	36.1	1.5	3.7	1.7
Teachers/ Nursery nurses	58	3.4	1.7	44.8	0.0	6.9	3.4	37.9	0.0	1.7	0.0
Students	322	2.2	0.9	1.6	42.9	1.2	6.5	30.4	0.3	1.9	12.1
Other regular workers	1,767	2.5	0.8	36.6	0.1	2.6	3.8	46.5	1.9	3.5	1.6
Other temporary/ daily workers	328	3.4	1.8	14.0	0.9	4.6	4.0	63.4	2.7	2.1	3.0
Other self-employed	213	4.2	6.6	7.5	0.0	3.8	1.9	65.3	2.8	5.2	2.8
Housekeepers	140	5.7	3.6	2.9	0.0	10.7	0.0	67.9	1.4	6.4	1.4
Jobless/ Others	713	3.6	2.2	2.4	1.8	3.2	4.3	60.9	8.3	7.7	5.5
Unknown	189	3.2	0.5	15.9	3.2	1.6	3.7	46.6	7.4	4.8	13.2

*1 Medical workers include nurses, public health nurses, medical doctors and dentists, physical therapists, occupational therapists, medical technologists, radiographers, and co-medicals.

*2 TB symptoms: Respiratory symptoms such as cough, sputum expectoration, bloody sputum, and hemoptysis; and other symptoms such as wheezing, chest pain, back pain, dyspnea, fever, night sweating, fatigue tendency, and weight loss.

【Tuberculosis Characteristics upon Diagnosis】

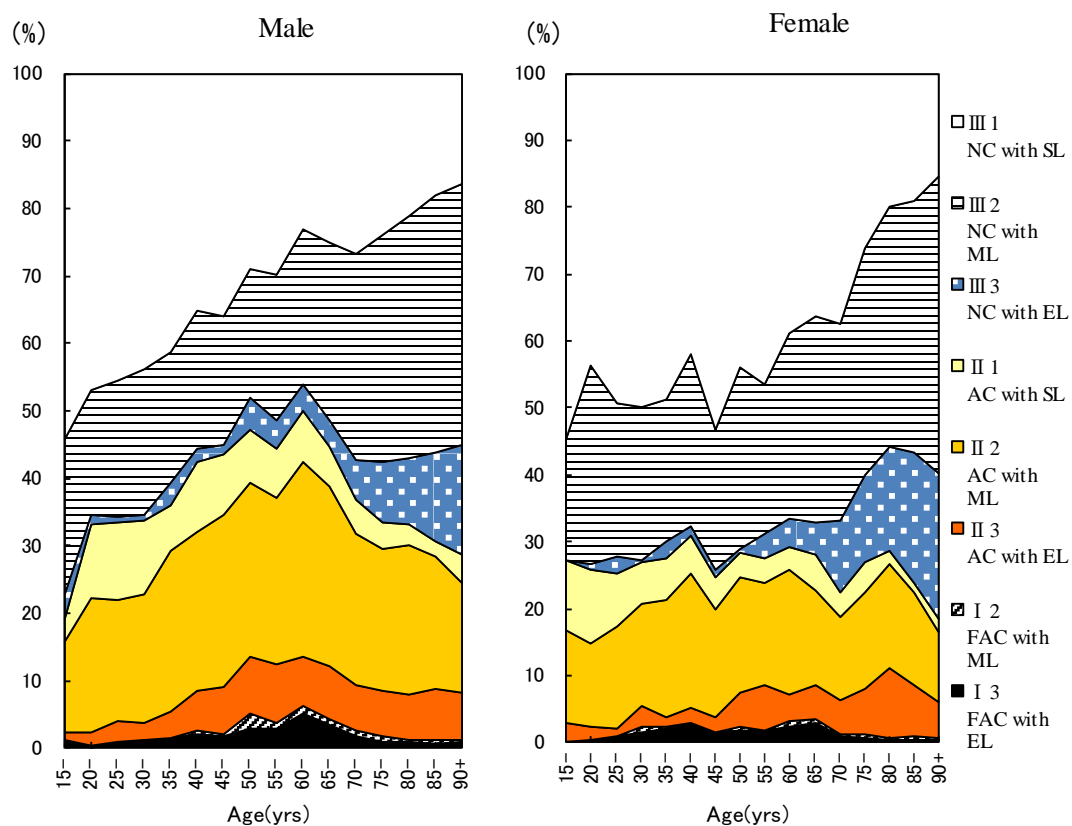


Fig.3 Proportion of cases classified by X-ray classification by sex and 5-yearage group, 2014

NC : Non-cavitary SL : Slight lesion AC : Advanced cavitary ML : Moderate lesion
 FAC: Far-advance cavitary EL : Extensive lesion

Table 2 Number of newly notified tuberculosis patients with HIV infection, by sex and age group, 2014 and 2007–2014

Age group	Sputum smear positive		Other bacteriologically positive		Bacteriologically negative		Extra-pulmonary		Total	
	M	F	M	F	M	F	M	F	M	F
2014 Calendar year										
Total	11	2	11 (3)	0	1	2 (2)	16 (4)	2 (1)	39 (7)	6 (3)
0-19	0	0	0	0	0	0	0	0	0	0
20-24	1	0	1 (1)	0	0	0	0	0	2 (1)	0
25-29	1	0	0	0	0	0	1	0	2	0
30-34	1	0	3 (1)	0	1	0	1	0	6 (1)	0
35-39	1	0	1	0	0	2 (2)	3 (2)	1 (1)	5 (2)	3 (3)
40-44	0	1	3 (1)	0	0	0	3 (1)	0	6 (2)	1
45-49	1	0	2	0	0	0	3 (1)	1	6 (1)	1
50-54	0	0	0	0	0	0	1	0	1	0
55-59	1	0	0	0	0	0	1	0	2	0
60-64	1	0	0	0	0	0	2	0	3	0
65-69	1	0	1	0	0	0	1	0	3	0
70-74	0	0	0	0	0	0	0	0	0	0
75-79	1	0	0	0	0	0	0	0	1	0
80+	2	1	0	0	0	0	0	0	2	1
2007-2014 Calendar year										
Total	134 (12)	23 (13)	75 (16)	9 (6)	36 (4)	7 (5)	153 (28)	24 (12)	398 (60)	63 (36)
0-19	1 (1)	0	0	0	0	0	2	0	3 (1)	0
20-24	4 (2)	0	2 (1)	0	1 (1)	1 (1)	1	1	8 (4)	2 (1)
25-29	8 (3)	3 (2)	1 (1)	1 (1)	1 (1)	0	9 (1)	1 (1)	19 (6)	5 (4)
30-34	11 (3)	4 (4)	9 (1)	3 (2)	2	1 (1)	20 (7)	4 (2)	42 (11)	12 (9)
35-39	19 (1)	3 (3)	15 (4)	2 (2)	5	2 (2)	24 (5)	4 (3)	63 (10)	11 (10)
40-44	25 (1)	4 (3)	15 (5)	0	6 (1)	3 (1)	35 (11)	5 (4)	81 (18)	12 (8)
45-49	13 (1)	1 (1)	9 (3)	1 (1)	4 (1)	0	29 (4)	2	55 (9)	4 (2)
50-54	10	0	10 (1)	0	5	0	7	0	32 (1)	0
55-59	8	0	3	0	4	0	9	2 (2)	24	2 (2)
60-64	11	1	5	0	3	0	6	0	25	1
65-69	10	0	3	0	3	0	5	1	21	1
70-74	2	2	1	0	1	0	2	1	6	3
75-79	4	0	0	0	1	0	3	2	8	2
80+	8	5	2	2	0	0	1	1	11	8

() : Re-count of foreigners

HIV : Human Immunodeficiency Virus. M : male patients, F : female patients.

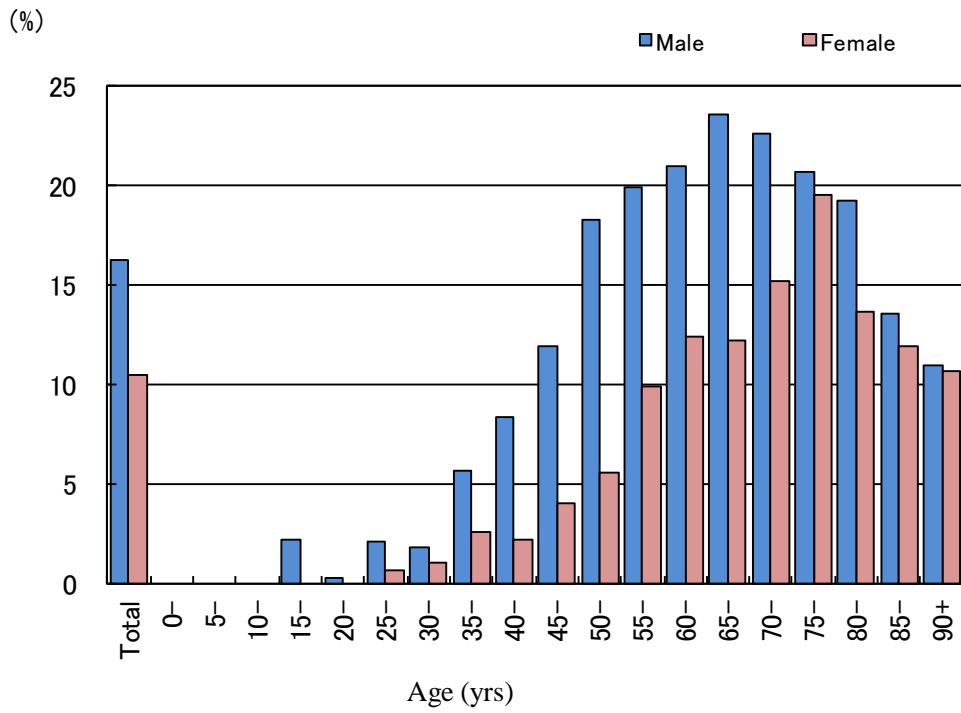


Fig.4 Proportion of newly notified tuberculosis patients with diabetes mellitus in each age-group by sex,2014

Table 3 Drug susceptibility test results among newly notified pulmonary tuberculosis patients, by treatment history, 2012–2014

Treatment history, Culture examination results, Drug susceptibility test results	2012				2013				2014			
	n	%	%	%	n	%	%	%	n	%	%	%
Total												
Pulmonary tuberculosis	16,432	100%			15,972	100%			15,149	100%		
Culture result obtained	14,058	85.6			13,311	83.3			12,909	85.2		
Culture positive	11,261	68.5	100%		10,523	65.9	100%		10,259	67.7	100%	
DST result obtained	8,347		74.1	100%	7,701		73.2	100%	7,645		74.5	100%
MDR	60			0.7	47			0.6	56			0.7
Any INH resistance	380			4.6	369			4.8	349			4.6
Any RFP resistance	73			0.9	64			0.8	76			1.0
Any resistance*	810			9.7	757			9.8	749			9.8
New treatment												
Pulmonary tuberculosis	15,040	100%			14,727	100%			13,956	100%		
Culture result obtained	12,882	85.7			12,279	83.4			11,897	85.2		
Culture positive	10,379	69.0	100%		9,782	66.4	100%		9,523	68.2	100%	
DST result obtained	7,676		74.0	100%	7,166		73.3	100%	7,104		74.6	100%
MDR	38			0.5	31			0.4	40			0.6
Any INH resistance	310			4.0	326			4.5	288			4.1
Any RFP resistance	46			0.6	42			0.6	58			0.8
Any resistance*	712			9.3	680			9.5	664			9.3
Re-treatment												
Pulmonary tuberculosis	1,094	100%			1,013	100%			968	100%		
Culture result obtained	959	87.7			852	84.1			848	87.6		
Culture positive	693	63.3	100%		586	57.8	100%		591	61.1	100%	
DST result obtained	555		80.1	100%	435		74.2	100%	449		76.0	100%
MDR	22			4.0	16			3.7	15			3.3
Any INH resistance	67			12.1	35			8.0	57			12.7
Any RFP resistance	26			4.7	22			5.1	17			3.8
Any resistance*	94			16.9	65			14.9	79			17.6
No information about treatment history												
Pulmonary tuberculosis	298	100%			232	100%			225	100%		
Culture result obtained	217	72.8			180	77.6			164	72.9		
Culture positive	189	63.4	100%		155	66.8	100%		145	64.4	100%	
DST result obtained	116		61.4	100%	100		64.5	100%	92		63.4	100%
MDR	0			0.0	0			0.0	1			1.1
Any INH resistance	3			2.6	8			8.0	4			4.3
Any RFP resistance	1			0.9	0			0.0	1			1.1
Any resistance*	4			3.4	12			12.0	6			6.5

DST: Drug susceptibility test MDR : Multi-drug resistant, i.e., resistant to at least INH and RFP INH: isoniazid RFP: rifampicin

Cases having drug resistance are counted independently by drug.

*: resistant to either INH, RFP, SM, or EB

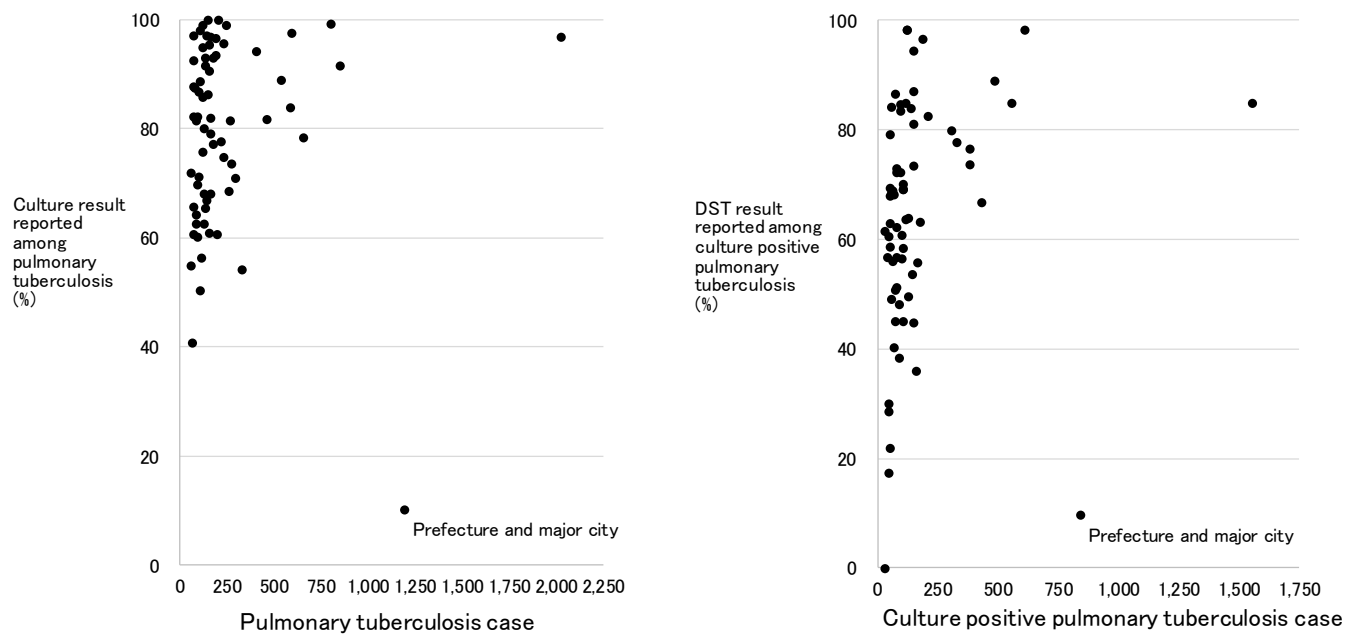
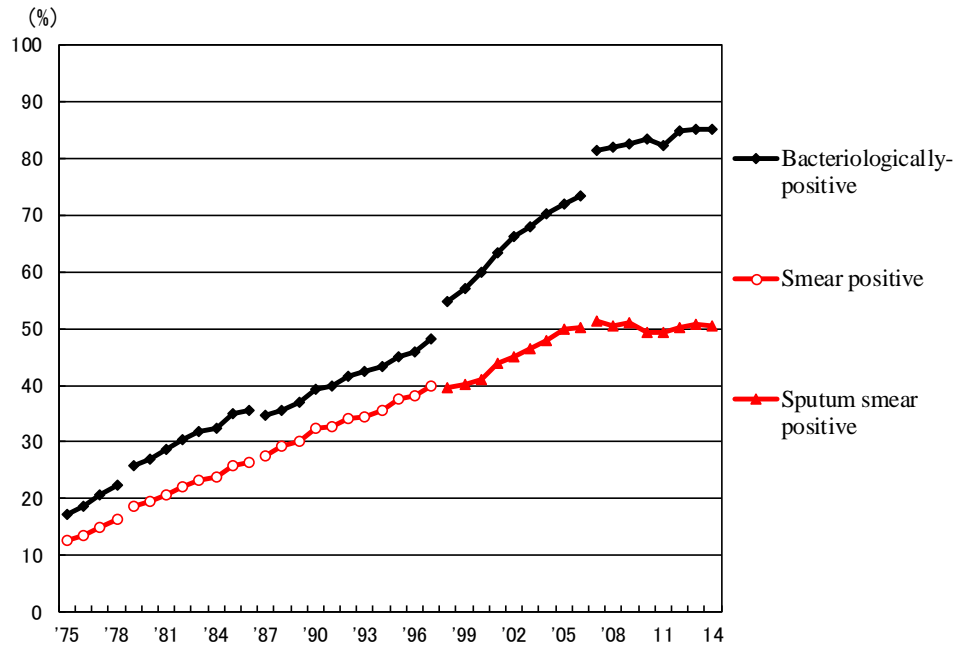


Fig. 5 Scatter plot of culture results reported among pulmonary tuberculosis patients and anti-tuberculosis drug susceptibility test results among newly notified pulmonary tuberculosis patients, by prefecture and major city, 2014



Previous Fig.

Proportion of bacteriologically confirmed cases among newly notified pulmonary tuberculosis patients, 1975-2014

Sources of information and subjects:

Annual tuberculosis reports from public health centers

1975-1978: All forms of tuberculosis

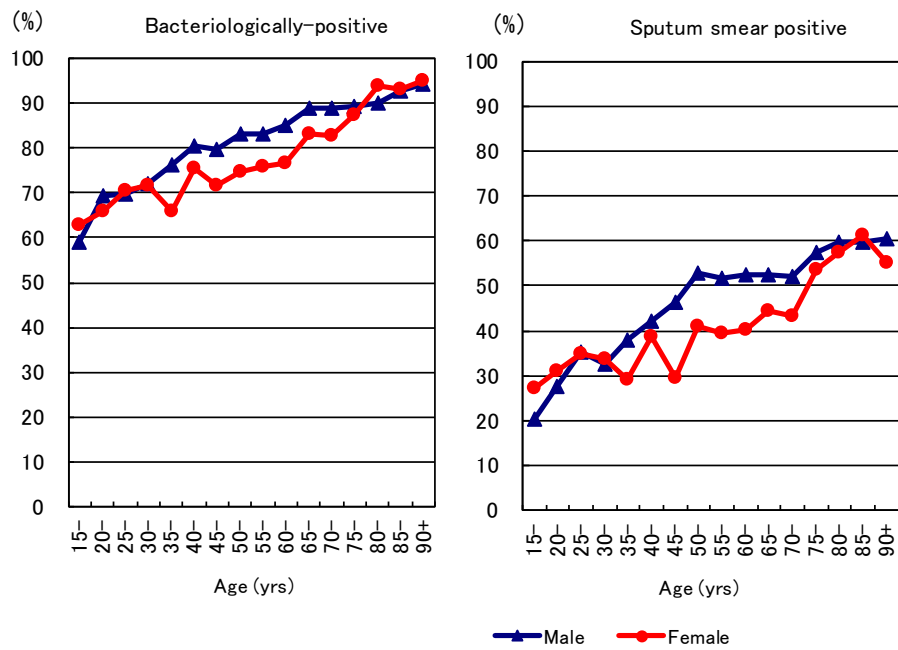
1979-1986: Pulmonary tuberculosis

Nationwide computerized tuberculosis surveillance system

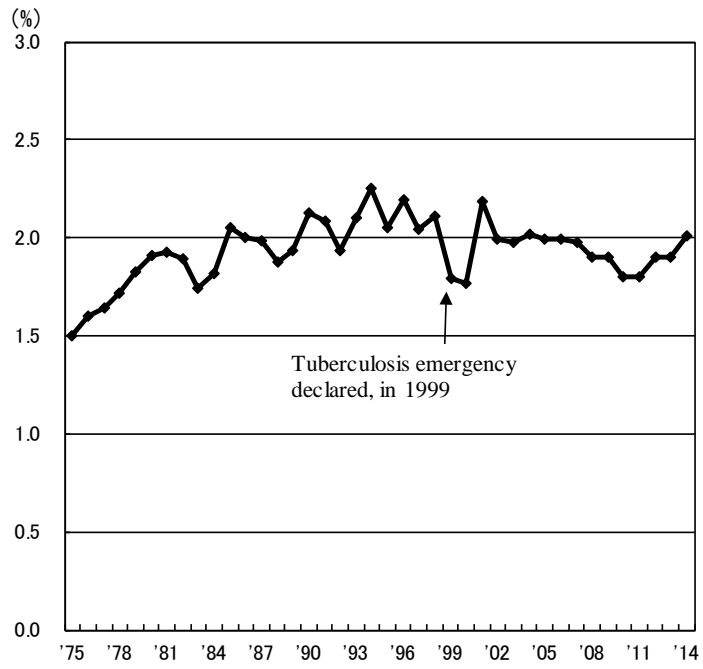
1987-1997: Pulmonary Tuberculosis

1998-2006: Pulmonary tuberculosis (New patient criteria for notification were applied)

2007-2009: Pulmonary tuberculosis (Item of nucleic acid amplification was added)



Previous Fig.
 Proportion of bacteriologically confirmed cases among newly notified pulmonary tuberculosis patients by sex and 5-year age group, 2014



Previous Fig. Proportion of far-advanced cavitary cases among newly notified pulmonary Tuberculosis patients, 1975-2014

Previous table Proportion of cavitary or/and sputum smear positive cases among newly notified pulmonary TB patients aged 30-59 years, 2014

	Male							Female						
	Pulmonary TB	Cavitary or sputum smear(+)			Cavitary and sputum smear(+)			Pulmonary TB	Cavitary or sputum smear(+)			Cavitary and sputum smear(+)		
		n	%	Ratio	n	%	Ratio		n	%	Ratio	n	%	Ratio
Service workers	104	62	59.6	1.5	32	30.8	1.9	108	57	52.8	1.5	26	24.1	3.1
Medical workers	75	30	40.0	1.0	12	16.0	1.0	246	88	35.8	1.0	19	7.7	1.0
Teachers/ Nursery nurses	16	6	37.5	0.9	5	31.3	2.0	26	6	23.1	0.6	2	7.7	1.0
Other regular workers	1,154	579	50.2	1.3	282	24.4	1.5	282	120	42.6	1.2	46	16.3	2.1
Other temporary/ daily workers	169	112	66.3	1.7	67	39.6	2.5	95	52	54.7	1.5	19	20.0	2.6
Other self-employed	174	112	64.4	1.6	63	36.2	2.3	33	11	33.3	0.9	6	18.2	2.4
Jobless	393	266	67.7	1.7	151	38.4	2.4	231	116	50.2	1.4	57	24.7	3.2
Others	115	65	56.5	1.4	25	21.7	1.4	193	87	45.1	1.3	33	17.1	2.2
Total	2,200	1,232	56.0		637	29.0		1,214	537	44.2		208	17.1	

Others:Houskeepers/ Students/ Unknown

Ratio: The ratio of each proportion to that of medical workers

Previous table Drug susceptibility test results among newly notified pulmonary tuberculosis patients, by sex and age group, 2014 and 2007–2014

Age group	Total										New treatment (Re-count)									
	Male					Female					Male					Female				
	DST result obtained	MDR	Any INH resist-ance	Any RFP resist-ance	* Any resist-ance	DST result obtained	MDR	Any INH resist-ance	Any RFP resist-ance	* Any resist-ance	DST result obtained	MDR	Any INH resist-ance	Any RFP resist-ance	* Any resist-ance	DST result obtained	MDR	Any INH resist-ance	Any RFP resist-ance	* Any resist-ance
2014 Calendar year																				
Total	4,946	42	269	54	554	2,699	14	80	22	195	4,525	29	221	39	484	2,579	11	67	19	180
0-19	36	0	2	0	4	33	0	2	1	5	30	0	2	0	4	33	0	2	1	5
20-29	256	9	24	11	45	211	8	13	9	30	249	8	22	9	42	203	7	12	8	29
30-39	260	1	14	1	39	189	1	7	3	21	248	1	14	1	38	183	1	5	3	18
40-49	390	6	23	6	51	187	1	8	1	19	367	5	20	5	47	180	0	6	0	16
50-59	453	6	34	8	61	161	1	2	2	11	421	3	28	5	52	155	0	1	1	10
60-69	795	3	45	9	104	243	0	7	1	19	731	3	37	8	89	230	0	6	1	18
70-79	1,117	10	65	12	142	434	1	12	1	29	1,012	6	50	8	123	413	1	11	1	28
80+	1,639	7	62	7	108	1,241	2	29	4	61	1,467	3	48	3	89	1,182	2	24	4	56
2007-2014 Calendar year																				
Total	36,800	294	1,860	410	4,462	18,744	151	837	200	1,960	33,129	180	1,490	257	3,843	17,509	90	677	127	1,715
0-19	243	6	21	6	48	235	2	18	3	47	231	4	19	4	46	224	2	16	3	43
20-29	1,836	38	132	49	320	1,571	42	126	52	272	1,761	31	116	40	301	1,494	30	110	38	249
30-39	2,346	16	150	25	358	1,771	20	108	31	250	2,217	12	140	21	336	1,695	15	94	22	225
40-49	3,008	27	163	39	429	1,410	16	69	23	189	2,814	18	142	26	385	1,334	9	59	15	171
50-59	4,415	44	253	67	655	1,207	14	50	21	135	4,070	26	215	41	583	1,144	5	36	11	118
60-69	6,627	44	354	77	920	1,794	12	96	14	228	6,016	26	290	45	791	1,680	6	75	7	195
70-79	8,177	71	412	88	971	3,497	21	146	26	353	7,202	37	296	47	796	3,195	9	116	13	304
80+	10,148	48	375	59	761	7,259	24	224	30	486	8,818	26	272	33	605	6,743	14	171	18	410
2007-2014 Calendar year																				
Total	100%	0.8	5.1	1.1	12.1	100%	0.8	4.5	1.1	10.5	100%	0.5	4.5	0.8	11.6	100%	0.5	3.9	0.7	9.8
0-19	100	2.5	8.6	2.5	19.8	100	0.9	7.7	1.3	20.0	100	1.7	8.2	1.7	19.9	100	0.9	7.1	1.3	19.2
20-29	100	2.1	7.2	2.7	17.4	100	2.7	8.0	3.3	17.3	100	1.8	6.6	2.3	17.1	100	2.0	7.4	2.5	16.7
30-39	100	0.7	6.4	1.1	15.3	100	1.1	6.1	1.8	14.1	100	0.5	6.3	0.9	15.2	100	0.9	5.5	1.3	13.3
40-49	100	0.9	5.4	1.3	14.3	100	1.1	4.9	1.6	13.4	100	0.6	5.0	0.9	13.7	100	0.7	4.4	1.1	12.8
50-59	100	1.0	5.7	1.5	14.8	100	1.2	4.1	1.7	11.2	100	0.6	5.3	1.0	14.3	100	0.4	3.1	1.0	10.3
60-69	100	0.7	5.3	1.2	13.9	100	0.7	5.4	0.8	12.7	100	0.4	4.8	0.7	13.1	100	0.4	4.5	0.4	11.6
70-79	100	0.9	5.0	1.1	11.9	100	0.6	4.2	0.7	10.1	100	0.5	4.1	0.7	11.1	100	0.3	3.6	0.4	9.5
80+	100	0.5	3.7	0.6	7.5	100	0.3	3.1	0.4	6.7	100	0.3	3.1	0.4	6.9	100	0.2	2.5	0.3	6.1

DST: Drug susceptibility test. MDR: Multi-drug resistance, i.e., resistant to at least INH and RFP. INH: Isoniazid. RFP: Rifampicin.

Previous table Drug susceptibility test results among newly notified pulmonary tuberculosis patients, by sex and age group,
2007-2014 (Re-count of foreigners)

Age group	Total										New treatment (Re-count)									
	Male					Female					Male					Female				
	DST result obtained	MDR	Any INH resist-ance	Any RFP resist-ance	* Any resist-ance	DST result obtained	MDR	Any INH resist-ance	Any RFP resist-ance	* Any resist-ance	DST result obtained	MDR	Any INH resist-ance	Any RFP resist-ance	* Any resist-ance	DST result obtained	MDR	Any INH resist-ance	Any RFP resist-ance	* Any resist-ance
2007-2014 Calendar year																				
Total	996	43	106	48	181	1139	56	146	68	231	940	31	86	36	162	1071	40	124	49	201
0-19	46	5	12	5	19	38	1	4	2	5	43	3	10	3	17	37	1	3	2	4
20-29	476	29	60	34	95	495	37	81	43	126	458	23	49	28	87	473	27	69	32	112
30-39	176	4	14	4	26	290	11	39	13	55	169	3	13	3	24	269	8	35	9	49
40-49	98	3	8	3	18	178	3	12	5	26	89	0	4	0	13	164	1	10	2	22
50-59	67	0	2	0	5	58	1	4	2	7	63	0	2	0	5	53	1	2	2	4
60-69	57	2	6	2	12	30	1	3	1	4	51	2	5	2	11	30	1	3	1	4
70-79	40	0	2	0	3	20	2	3	2	4	36	0	2	0	3	16	1	2	1	2
80+	36	0	2	0	3	30	0	0	0	4	31	0	1	0	2	29	0	0	0	4
2007-2014 Calendar year																				
Total	100%	4.3	10.6	4.8	18.2	100%	4.9	12.8	6.0	20.3	100%	3.3	9.1	3.8	17.2	100%	3.7	11.6	4.6	18.8
0-19	100	10.9	26.1	10.9	41.3	100	2.6	10.5	5.3	13.2	100	7.0	23.3	7.0	39.5	100	2.7	8.1	5.4	10.8
20-29	100	6.1	12.6	7.1	20.0	100	7.5	16.4	8.7	25.5	100	5.0	10.7	6.1	19.0	100	5.7	14.6	6.8	23.7
30-39	100	2.3	8.0	2.3	14.8	100	3.8	13.4	4.5	19.0	100	1.8	7.7	1.8	14.2	100	3.0	13.0	3.3	18.2
40-49	100	3.1	8.2	3.1	18.4	100	1.7	6.7	2.8	14.6	100	0.0	4.5	0.0	14.6	100	0.6	6.1	1.2	13.4
50-59	100	0.0	3.0	0.0	7.5	100	1.7	6.9	3.4	12.1	100	0.0	3.2	0.0	7.9	100	1.9	3.8	3.8	7.5
60-69	100	3.5	10.5	3.5	21.1	100	3.3	10.0	3.3	13.3	100	3.9	9.8	3.9	21.6	100	3.3	10.0	3.3	13.3
70-79	100	0.0	5.0	0.0	7.5	100	10.0	15.0	10.0	20.0	100	0.0	5.6	0.0	8.3	100	6.3	12.5	6.3	12.5
80+	100	0.0	5.6	0.0	8.3	100	0.0	0.0	0.0	13.3	100	0.0	3.2	0.0	6.5	100	0.0	0.0	0.0	13.8

DST: Drug susceptibility test. MDR: Multi-drug resistance, i. e., resistant to at least INH and RFP. INH: Isoniazid. RFP: Rifampicin.