

【Summary】

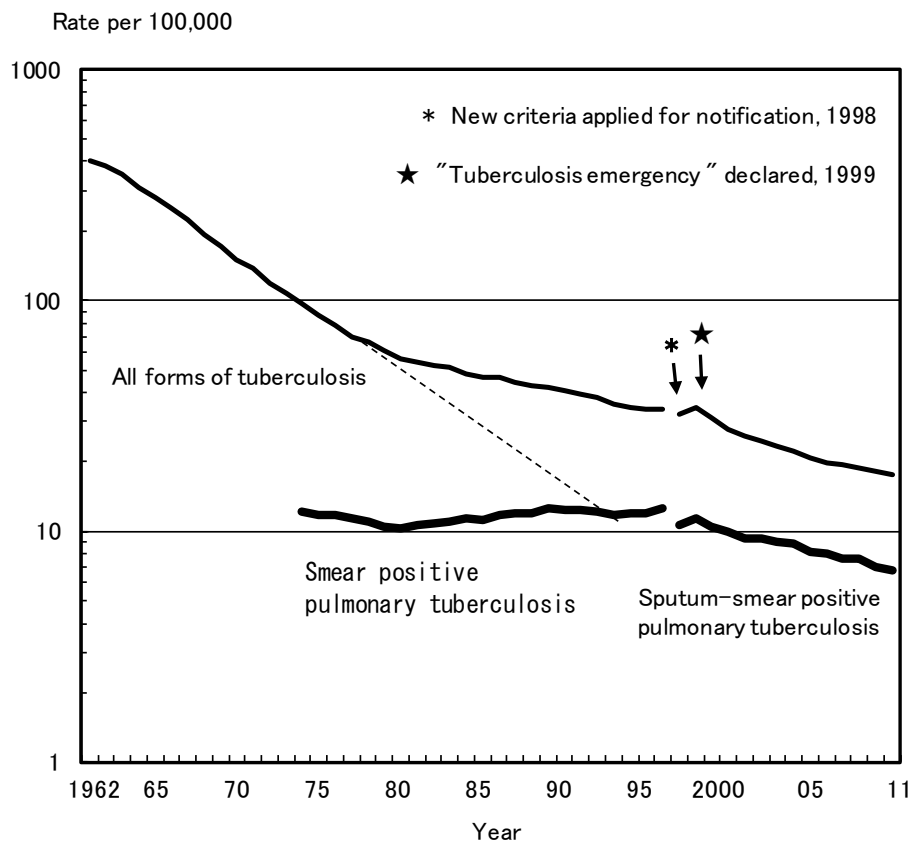


Fig. 1 Annual trend of tuberculosis notification rate (all forms, sputum-smear positive pulmonary tuberculosis) per 100,000 population, 1962–2011

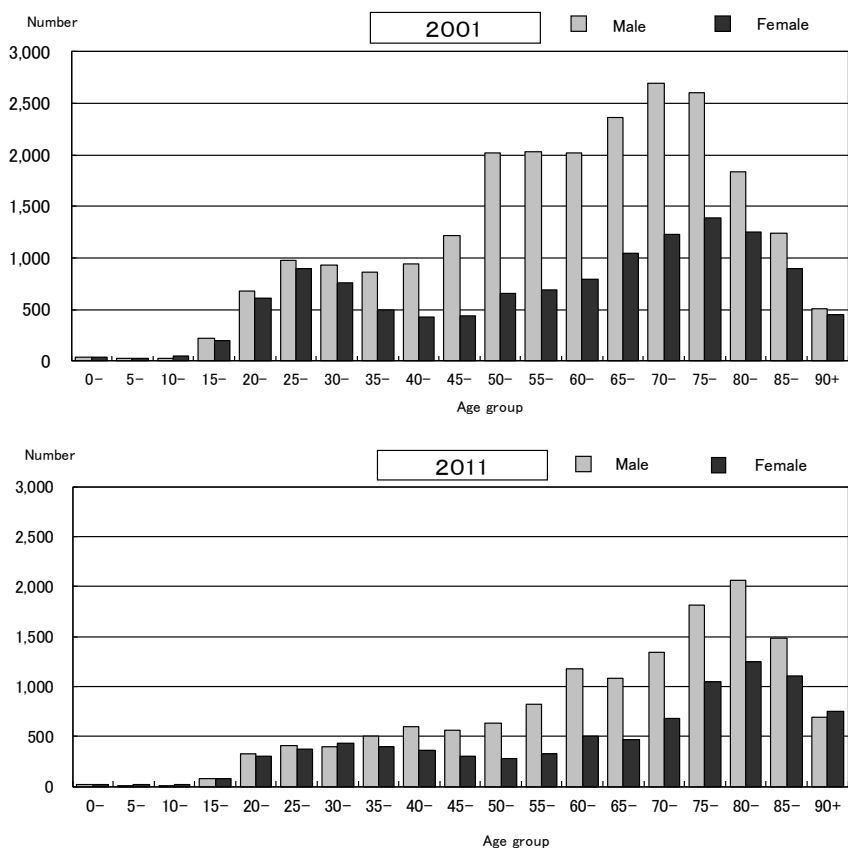


Fig. 2 Age distribution of newly notified tuberculosis patients by sex, 2001 and 2011

Table 1 Number and rate of newly notified tuberculosis patients, by age group, 2009–2011

Age group	Tuberculosis notifications, all forms (*1)		Tuberculosis notification rates, all forms (*2)		New tuberculosis												Retreatment tuberculosis																			
					Pulmonary tuberculosis												Pulmonary tuberculosis																			
					Sputum-smear positive			Sputum-smear negative						Bacteriological tests unknown			Extra-pulmonary tuberculosis			Sputum-smear positive			Sputum-smear negative						Bacteriological tests unknown			Extra-pulmonary tuberculosis				
								Other bacteriologically positive		Other sputum-smear negative													Other bacteriologically positive		Other sputum-smear negative											
2009	2010	2011	2009	2010	2011	2009	2010	2011	2009	2010	2011	2009	2010	2011	2009	2010	2011	2009	2010	2011	2009	2010	2011	2009	2010	2011	2009	2010	2011	2009	2010	2011	2009	2010	2011	
Total	24,170	23,261	22,681	19	18	18	8,853	8,237	7,937	5,570	5,866	5,363	2,738	2,544	2,619	283	220	249	4,975	4,632	4,826	822	782	717	390	412	408	237	237	204	19	30	22	283	301	336
0–14	73	89	84	0	1	1	4	7	5	9	15	12	25	33	32	4	6	9	25	24	22	0	0	0	1	0	0	2	2	3	1	1	0	2	1	1
15–19	204	251	157	3	4	3	45	58	42	64	73	49	56	71	35	6	6	8	18	30	15	3	2	3	4	3	0	4	2	2	3	2	2	1	4	1
20–29	1,699	1,536	1,417	12	11	10	496	374	347	467	500	426	386	346	358	49	29	33	227	209	189	30	15	13	15	20	18	18	21	14	2	6	3	9	16	16
30–39	2,100	1,921	1,718	11	11	10	644	567	494	576	540	427	396	396	408	37	30	27	345	296	270	39	29	26	26	15	20	18	17	12	1	3	1	18	28	33
40–49	1,847	1,764	1,820	11	11	11	679	568	592	461	486	442	302	285	323	25	25	24	285	276	338	41	48	33	17	27	25	15	18	14	0	5	4	22	26	25
50–59	2,476	2,171	2,049	15	13	13	943	784	771	555	585	472	344	282	296	33	18	38	423	335	344	80	75	48	23	33	35	46	35	25	3	2	3	26	22	17
60–69	3,650	3,610	3,232	21	20	17	1,316	1,262	1,134	771	863	709	447	386	402	37	35	34	760	759	685	144	127	107	75	62	65	50	59	47	3	4	3	47	53	46
70–79	5,148	5,000	4,875	40	39	37	1,815	1,800	1,649	1,112	1,173	1,125	432	405	402	52	41	40	1,322	1,161	1,254	198	194	168	97	107	103	45	46	52	6	4	5	69	69	77
80–89	5,700	5,623	5,897	87	83	83	2,325	2,271	2,286	1,280	1,301	1,361	296	297	302	37	28	35	1,301	1,241	1,375	245	250	278	113	128	120	36	34	30	0	3	0	67	70	110
90+	1,273	1,296	1,432	96	92	99	586	546	617	275	330	340	54	43	61	3	2	1	269	301	334	42	42	41	19	17	22	3	3	5	0	0	1	22	12	10

*1: All forms include new and retreatment tuberculosis patients.

*2: Rate per 100,000 population

Table 2 Newly notified latent tuberculosis infection (LTBI) treatment cases, by sex and age group, 2009–2011

Age group	2009					2010					2011				
	Total	Sex		(%)	Ratio of F/M	Total	Sex		(%)	Ratio of F/M	Total	Sex		(%)	Ratio of F/M
		Male	Female				Male	Female				Male	Female		
Total	4,119	1,790	2,329	100	1.3	4,930	2,206	2,724	100	1.2	10,046	3,966	6,080	100	1.5
0–4	390	159	231	9.5	1.5	370	182	188	7.5	1.0	542	251	291	5.4	1.2
5–9	207	93	114	5.0	1.2	160	86	74	3.2	0.9	182	92	90	1.8	1.0
10–14	156	78	78	3.8	1.0	162	87	75	3.3	0.9	233	97	136	2.3	1.4
15–19	208	97	111	5.0	1.1	244	139	105	4.9	0.8	327	165	162	3.3	1.0
20–24	316	125	191	7.7	1.5	397	176	221	8.1	1.3	864	257	607	8.6	2.4
25–29	431	170	261	10.5	1.5	462	189	273	9.4	1.4	1,080	379	701	10.8	1.8
30–34	410	181	229	10.0	1.3	519	223	296	10.5	1.3	1,084	408	676	10.8	1.7
35–39	485	211	274	11.8	1.3	534	212	322	10.8	1.5	1,152	448	704	11.5	1.6
40–44	440	200	240	10.7	1.2	519	213	306	10.5	1.4	989	374	615	9.8	1.6
45–49	446	182	264	10.8	1.5	479	193	286	9.7	1.5	923	325	598	9.2	1.8
50–54	203	76	127	4.9	1.7	349	146	203	7.1	1.4	773	278	495	7.7	1.8
55–59	201	90	111	4.9	1.2	290	140	150	5.9	1.1	683	289	394	6.8	1.4
60–64	102	59	43	2.5	0.7	194	101	93	3.9	0.9	577	279	298	5.7	1.1
65–69	42	22	20	1.0	0.9	115	59	56	2.3	0.9	269	134	135	2.7	1.0
70+	82	47	35	2.0	0.7	136	60	76	2.8	1.3	368	190	178	3.7	0.9

Ratio of F/M: Ratio of female patients to male patients

%: proportion

Previous table Newly notified tuberculosis cases by registered month, 2011

Registered month	Active tuberculosis								LTBI* on treatment
	All active tuberculosis	Active pulmonary tuberculosis						Extra-pulmonary	
		All active pulmonary tuberculosis	Sputum smear positive		Other bacillary positive	Bacillary negative or bacillary results unknown			
		All sputum smear positive	New	Retreatment					
Total	22,681	17,519	8,654	7,937	717	5,771	3,094	5,162	10,046
Jan.	1,676	1,288	627	578	49	461	200	388	504
Feb.	1,751	1,360	664	606	58	456	240	391	716
Mar.	1,904	1,465	725	668	57	449	291	439	1,005
Apr.	1,836	1,410	698	645	53	482	230	426	738
May	1,858	1,402	710	641	69	454	238	456	815
Jun.	2,033	1,540	716	639	77	532	292	493	874
Jul.	1,948	1,547	780	718	62	503	264	401	889
Aug.	2,041	1,581	789	728	61	499	293	460	971
Sep.	1,985	1,541	796	736	60	510	235	444	891
Oct.	1,852	1,467	776	722	54	440	251	385	831
Nov.	1,839	1,443	701	647	54	476	266	396	858
Dec.	1,958	1,475	672	609	63	509	294	483	954

* LTBI: Latent Tuberculosis Infection. These are not included in the number of active tuberculosis.

Table 3 Newly notified tuberculosis patients by affected organ, sex and age group, 1998–2011

Sex, Age-group, notifications, 2011	Tuberculosis all forms	Pulmonary tuberculosis			Extra-pulmonary tuberculosis																	
		Lung	Bronchi	Pharyngeal / Laryngeal	Miliary	Pleural	Empyema	Hilar lymph node	Other lymph node	Meninges	Intestines	Vertebrae	Other joints / bones	Kidney / Urinary tract	Genitals	Skins	Eyes	Ears	Peritoneum	Pericardium	Other organs	
Total	22,681	17,969	129	57	695	3,929	52	70	1,199	156	317	250	145	83	22	89	27	21	173	89	187	
Male	13,994	11,472	41	22	283	2,689	32	32	380	96	148	104	69	41	15	44	16	7	80	64	92	
Female	8,687	6,497	88	35	412	1,240	20	38	819	60	169	146	76	42	7	45	11	14	93	25	95	
0–14	84	63			2	4		7	12	1			2									1
15–19	157	142	2	0	1	9	0	0	8	4	0	0	2	1	0	0	1	0	1	0	0	
20–29	1,417	1,223	8	4	18	147	1	11	105	10	8	6	2	0	1	3	3	1	10	0	3	
30–39	1,718	1,435	18	12	21	219	5	8	123	15	32	13	9	3	0	5	7	6	11	1	20	
40–49	1,820	1,472	13	7	28	238	1	6	117	21	33	10	6	10	1	11	5	3	9	4	19	
50–59	2,049	1,706	13	6	27	247	3	6	117	10	46	15	15	8	2	8	4	3	13	1	20	
60–69	3,232	2,543	17	6	58	447	2	11	208	25	58	50	26	21	8	18	3	5	23	18	33	
70–79	4,875	3,628	29	10	155	969	19	16	284	31	93	92	38	19	7	26	2	2	52	38	44	
80–89	5,897	4,609	23	9	299	1,296	17	5	202	33	41	57	42	19	3	16	2	1	50	23	40	
90+	1,432	1,148	6	3	86	353	4	0	23	6	6	7	3	2	0	2	0	0	4	4	7	
Year	Total																					
1998	41,033	33,981	–	–	505	5,125	251	136	1,469	154	335	385	328	227	78	100	12	25	–	–	692	
1999	43,818	36,190	–	–	603	5,586	221	143	1,538	163	345	334	300	179	96	94	13	28	–	–	684	
2000	39,384	32,338	–	–	597	5,108	202	123	1,432	158	356	319	272	181	72	123	16	38	–	–	656	
2001	35,489	28,868	–	–	642	4,840	162	102	1,368	177	275	276	274	172	72	104	11	25	–	–	619	
2002	32,828	26,472	–	–	626	4,666	152	84	1,269	188	323	299	222	148	66	100	19	29	–	–	544	
2003	31,638	25,478	–	–	639	4,539	142	83	1,341	149	276	268	223	144	47	87	15	28	–	–	570	
2004	29,736	23,829	–	–	617	4,491	125	70	1,293	160	299	275	220	112	53	95	13	30	–	–	564	
2005	28,319	22,655	–	–	585	4,338	115	88	1,151	180	296	233	201	130	37	98	11	33	–	–	536	
2006	26,384	20,856	–	–	616	4,192	97	79	1,191	127	263	248	231	112	40	109	9	24	–	–	554	
2007	25,311	20,264	108	31	602	4,134	75	57	1,186	153	328	232	190	108	34	92	19	18	92	61	281	
2008	24,760	19,780	117	43	570	4,001	78	68	1,194	171	292	273	170	121	34	92	13	29	144	80	181	
2009	24,170	19,278	121	36	604	3,940	63	73	1,221	162	321	241	182	100	23	121	26	22	168	88	179	
2010	23,261	18,735	127	53	598	3,959	48	74	1,158	138	330	239	159	88	35	97	29	12	154	76	171	
2011	22,681	17,969	129	57	695	3,929	52	70	1,199	156	317	250	145	83	22	89	27	21	173	89	187	

Note: Cases having multiple organs are counted independently.

[Foreign]

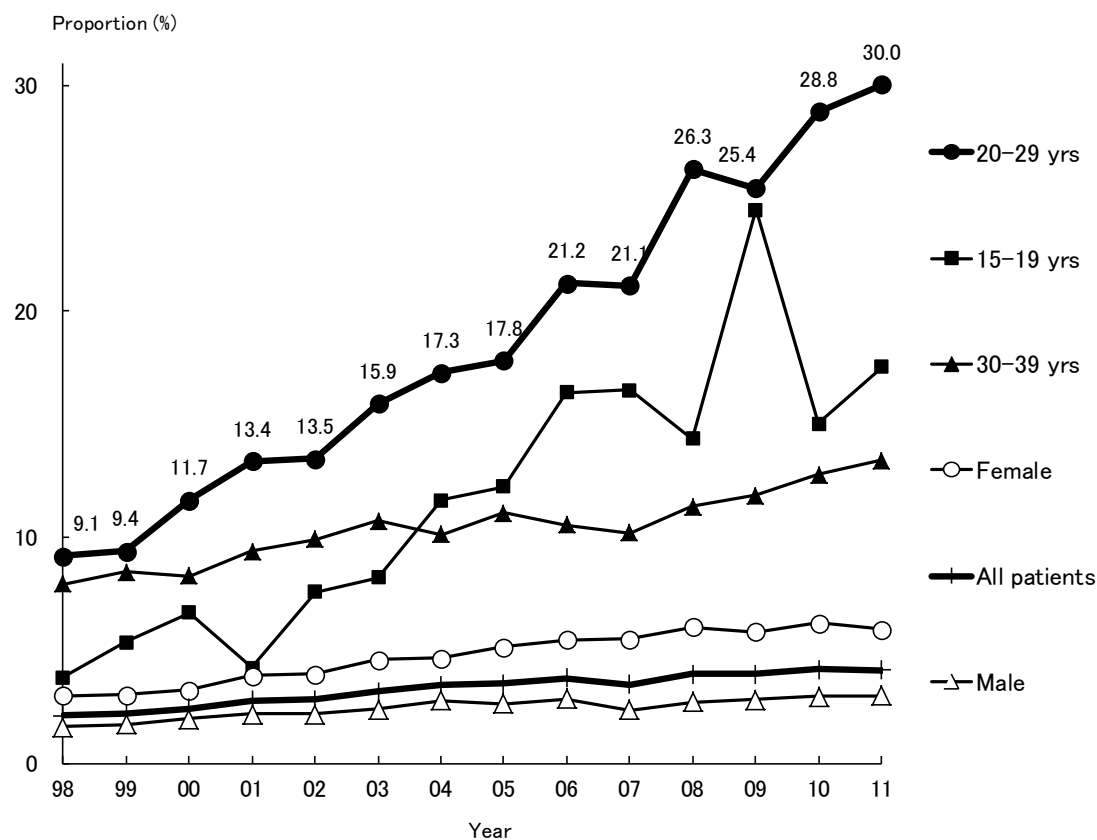


Fig. 3 Annual trend of proportion of foreign nationals among newly notified tuberculosis patients by age group, 1998–2011

In the proportion, the numerator excluded those whose nationalities are unknown.

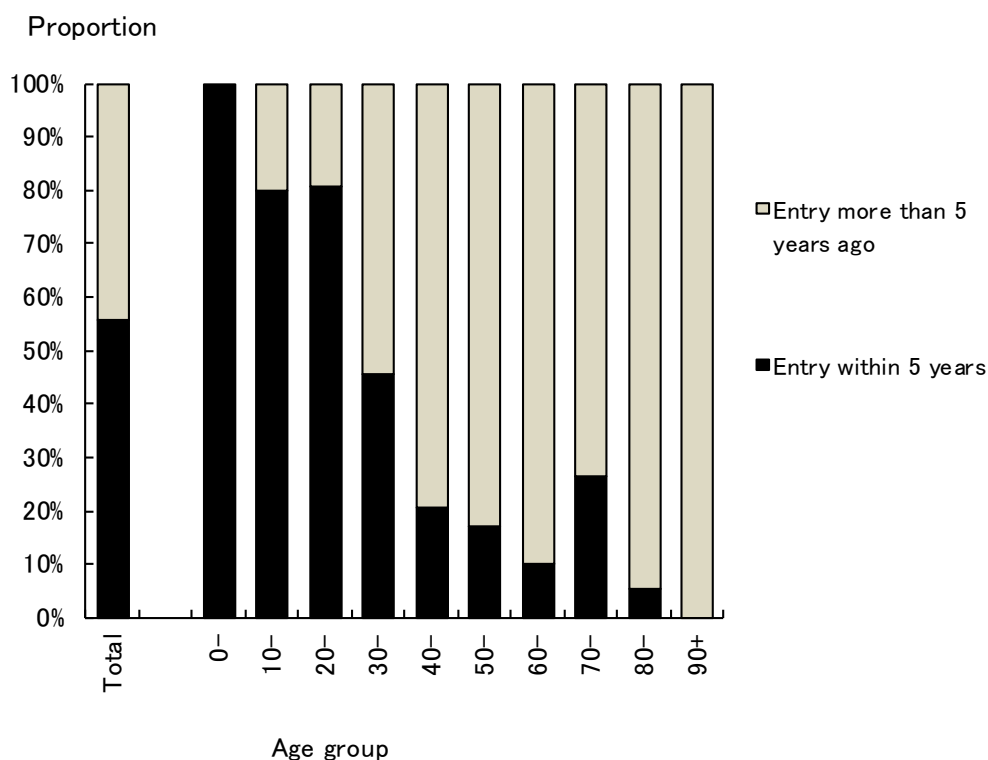


Fig. 4 Proportion of foreign national tuberculosis patients by age group and time of entry to Japan, 2011

Table 4 Trend of newly notified tuberculosis patients by year, sex, and nationality, 1998–2011

Year	Number of newly notified tuberculosis patients	Nationality			Foreign nationals (%)*	Sex**		Ratio of Females to Males
		Japanese	Foreign nationals	Unknown		Male	Female	
1998	41,033	34,382	739	5,912	2.1	365	374	1.0
1999	43,818	37,094	821	5,903	2.2	415	406	1.0
2000	39,384	33,720	837	4,827	2.4	436	401	0.9
2001	35,489	30,305	866	4,318	2.8	442	424	1.0
2002	32,828	28,667	824	3,337	2.8	411	413	1.0
2003	31,638	27,665	906	3,067	3.2	433	473	1.1
2004	29,736	26,205	931	2,600	3.4	479	452	0.9
2005	28,319	25,247	923	2,149	3.5	438	485	1.1
2006	26,384	23,505	920	1,959	3.8	444	476	1.1
2007	25,311	23,451	842	1,018	3.5	364	478	1.3
2008	24,760	23,163	945	652	3.9	416	529	1.3
2009	24,170	22,808	938	424	4.0	414	524	1.3
2010	23,261	21,976	952	333	4.2	424	528	1.2
2011	22,681	21,372	921	388	4.1	416	505	1.2

* In the percentage of foreign nationals with tuberculosis shown above, the numerator does not include those of unknown nationality.

** Sex distribution among foreign nationals

Table 5 Number and proportion of foreign nationals with tuberculosis by country and time of entry to Japan, 2011

Total			Entry within 5 years			Entry more than 5 years ago, or unknown		
Total	921	100 %	Total	513	100 %	Total	408	100 %
China	273	29.6	China	202	39.4	Philippines	131	32.1
Philippines	218	23.7	Philippines	87	17.0	China	71	17.4
Republic of Korea	85	9.2	Indonesia	43	8.4	Republic of Korea	63	15.4
Vietnam	52	5.6	Vietnam	41	8.0	Brazil	19	4.7
Indonesia	49	5.3	Nepal	28	5.5	Thailand	16	3.9
Nepal	38	4.1	Republic of Korea	22	4.3	Vietnam	11	2.7
Thailand	29	3.1	India	15	2.9	Nepal	10	2.5
Brazil	24	2.6	Thailand	13	2.5			
India	23	2.5	Myanmar	12	2.3			
Myanmar	13	1.4						
Peru	12	1.3						
D.P.R. Korea	10	1.1						
Others	52	5.6	Others	34	6.6	Others	60	14.7
Unknown	43	4.7	Unknown	16	3.1	Unknown	27	6.6

Only those nationalities with more than ten tuberculosis cases are listed.

Table 6 Occupation of foreign nationals with tuberculosis by age group, 2011

Age group	Total	Service workers	Health care workers	Teachers / Nursery staff	Infants / Children	Students	Other regular employees	Other temporary /day laborer	Other self-employed	House-wives	Unemployed/ Others	Unknown
Total	921	54(6)	8(0.9)	3(0.3)	9(1.0)	183(20)	252(27)	106(12)	16(2)	73(8)	190(21)	27(3)
Male	416	18(4)	1(0.2)	-	2(0.5)	106(25)	146(35)	49(12)	8(2)	1(0)	77(19)	8(2)
Female	505	36(7)	7(1.4)	3(0.6)	7(1.4)	77(15)	106(21)	57(11)	8(2)	72(14)	113(22)	19(4)
0-14	8	-	-	-	8(100)	-	-	-	-	-	-	-
15-19	27	1(4)	-	-	1(4)	15(56)	5(19)	4(15)	-	-	1(4)	-
20-24	218	4(2)	1(0)	-	-	108(50)	62(28)	18(8)	1(0.5)	4(2)	18(8)	2(1)
25-29	201	10(5)	4(2)	-	-	45(22)	63(31)	26(13)	1(0)	21(10)	26(13)	5(2)
30-34	142	12(8)	1(1)	-	-	14(10)	42(30)	17(12)	4(3)	17(12)	29(20)	6(4)
35-39	84	9(11)	2(2)	1(1)	-	1(1)	26(31)	9(11)	3(4)	9(11)	19(23)	5(6)
40-44	77	10(13)	-	2(3)	-	-	20(26)	13(17)	1(1)	12(16)	16(21)	3(4)
45-49	49	5(10)	-	-	-	-	14(29)	12(24)	1(2)	8(16)	7(14)	2(4)
50-54	36	2(6)	-	-	-	-	14(39)	3(8)	3(8)	-	12(33)	2(6)
55-59	17	-	-	-	-	-	6(35)	3(18)	-	1(6)	7(41)	-
60+	62	1(2)	-	-	-	-	-	1(2)	2(3)	1(2)	55(89)	2(3)

(%)

Previous table Trend of newly notified foreign nationals with TB by year and age group, 1998-2011

Year	All foreigners	Age group							Percentage of 20-29 yrs in total
		0-14	15-19	20-29	30-39	40-49	50-59	60+	
1998	739	11	15	300	215	83	44	71	40.6%
1999	821	13	25	319	241	89	54	80	38.9
2000	837	16	24	357	235	92	49	64	42.7
2001	866	6	15	361	249	110	55	70	41.7
2002	824	6	23	345	249	81	47	73	41.9
2003	906	12	22	399	268	98	38	69	44.0
2004	931	6	30	402	250	107	59	77	43.2
2005	923	9	33	378	273	105	62	63	41.0
2006	920	6	33	409	234	113	59	66	44.5
2007	842	9	32	390	224	102	43	42	46.3
2008	945	5	26	468	237	114	41	54	49.5
2009	938	3	49	427	243	103	41	72	45.5
2010	952	9	37	438	242	114	39	73	46.0
2011	921	8	27	419	226	126	53	62	45.5

Previous table Distribution of foreign nationals with tuberculosis by prefecture and designated city, 2011

	Newly notified patients	Foreign nationals	Proportion (%)	Leading countr(ies) (Number of cases)
Japan	22,681	921	4.1	China (273)
Okayama city	97	10	10.3	China (4)
Chiba city	171	14	8.2	Philippines, Unknown (3)
Shizuoka city	113	9	8.0	Myanmar, Unknown (2)
Sagamihara city	130	10	7.7	China, Korea, Vietnam (2)
Mie	280	21	7.5	China, (8)
Toyama	158	11	7.0	China (8)
Aichi	889	61	6.9	Philippines (24)
Gifu	434	29	6.7	Philippines (16)
Hamamatsu city	152	10	6.6	Philippines (5)
Shiga	244	16	6.6	Indonesia (5)
Kagawa	139	9	6.5	Philippines (5)
Tokyo	3,022	194	6.4	China (76)
Yamanashi	97	6	6.2	Philippines (3)
Hiroshima	285	17	6.0	China (6)
Ibaraki	431	25	5.8	Philippines (9)
Ngoya city	637	36	5.7	China (11)
Fukui	124	7	5.6	China (4)
Nagano	217	12	5.5	Philippines (4)
Fukuoka city	220	12	5.5	China (5)
Tochigi	260	14	5.4	China, Philippines (4)
Kanagawa	460	24	5.2	Philippines (9)
Kyoto city	299	15	5.0	China (9)

Those prefectures and designated cities with 5% or more tuberculosis cases with foreign nationals are listed. The figures of prefectures do not include those cases registered to designated cities in the respective prefecture, if applicable. E.g., the figure of Kanagawa prefecture does not include those of Yokohama and Kawasaki cities.