

Fig. 1 Trend of childhood tuberculosis notification rates, per 100,000 population, 1962-2011

Table 1 Number (rates) of childhood tuberculosis patients and specific extra-pulmonary tuberculosis, 1965–2011

Year	Newly notified tuberculosis aged 0–14 yrs		No. of meningeal tuberculosis		No. of miliary tuberculosis	
	Number	Rate	0–14 yrs	0–4 yrs (Rate)	0–14 yrs	0–4 yrs (Rate)
1965	44,180	175.6	—	—	—	—
1970	18,197	73.4	—	—	—	—
1975	4,905	18.0	28	22 (0.221)	—	—
1980	1,893	6.9	22	14 (0.164)	—	—
1985	1,088	4.2	—	—	—	—
1990	518	2.3	9	4 (0.061)	10	8 (0.122)
1995	340	1.7	8	8 (0.136)	8	8 (0.136)
2000	220	1.2	7	4 (0.069)	3	3 (0.052)
2005	117	0.67	3	1 (0.018)	3	1 (0.018)
2006	85	0.49	0	0	1	1 (0.018)
2007	92	0.53	0	0	0	0
2008	95	0.55	0	0	1	1 (0.019)
2009	73	0.43	1	1 (0.019)	4	3 (0.056)
2010	89	0.53	0	0	0	0
2011	84	0.50	1	0	2	1(0.019)

Extra-pulmonary tuberculosis: Cases are counted independently.

Rate: per 100,000

—: Not available

Table 2 Number of newly notified childhood tuberculosis patients by age and mode of detection, 2011

	Age (yrs)														Total	
	0	1	2	3	4	5	6	7	8	9	10	11	12	13		14
School mass-investigation	—	—	—	—	—	—	—	1	—	—	—	—	—	—	—	1
Family contact investigation	3	3	5	5	3	3	6	2	3	2	4	1	2	—	3	45
Other contact investigation	—	—	—	—	3	—	—	—	—	—	—	1	—	2	3	9
At clinics/hospitals (symptoms)	—	4	—	1	2	—	1	—	—	2	2	1	3	3	4	23
Others	2	—	1	1	—	—	—	—	—	—	—	1	—	—	1	6
Total	5	7	6	7	8	3	7	3	3	4	6	4	5	5	11	84

Table 3 Proportion of BCG vaccinated cases among newly notified childhood tuberculosis patients and LTBI cases, 2011

	Age in years										5-9	10-14	Total	
	Age in months					0	1	2	3	4				Total
	0-2	3-5	6-8	9-11	Total									
Tuberculosis cases	0	4	1	0	5	7	6	7	8	33	20	31	84	
BCG vaccinated	0	2	1	0	3	6	5	6	7	27	18	25	70	
BCG not vaccinated	0	2	0	0	2	0	1	0	0	3	1	2	6	
BCG unknown	0	0	0	0	0	1	0	1	1	3	1	4	8	
BCG vaccinated (%)	-	50.0	100.0	-	60.0	100.0	83.3	100.0	100.0	90.0	94.7	92.6	92.1	
LTBI	24	59	61	58	202	104	93	73	70	542	182	233	957	
BCG vaccinated	4	35	57	54	150	98	88	69	60	465	156	186	807	
BCG not vaccinated	20	23	3	2	48	4	3	0	5	60	10	9	79	
不明 BCG unknown	0	1	1	2	4	2	2	4	5	17	16	38	71	
BCG vaccinated (%)	16.7	60.3	95.0	96.4	75.8	96.1	96.7	100.0	92.3	88.6	94.0	95.4	91.1	

LTBI : Latent Tuberculosis Infection

(%) Proportion of BCG vaccinated cases among all TB/LTBI cases excluding BCG unknown

Previous table Trend of newly notified childhood TB patients by age and calendar year, 1998–2011

Year	Age (yrs)															Total
	0	1	2	3	4	5	6	7	8	9	10	11	12	13	14	
1998	31	39	15	18	16	12	18	14	13	10	7	7	29	18	27	274
1999	43	35	24	23	9	10	15	8	7	10	8	9	27	27	25	280
2000	29	27	19	14	14	8	10	13	5	7	14	11	21	12	16	220
2001	27	18	14	9	7	4	14	11	11	8	8	4	23	18	19	195
2002	30	21	14	12	3	9	8	5	6	6	2	3	14	15	7	155
2003	23	15	17	5	12	9	5	4	1	5	4	3	4	10	10	127
2004	20	18	9	5	10	5	2	3	5	4	3	4	12	6	11	117
2005	23	11	5	13	4	4	3	7	5	3	6	5	7	13	8	117
2006	9	6	8	6	6	6	3	3	2	4	3	4	3	13	9	85
2007	21	5	7	12	2	6	5	2	4	2	2	4	4	7	9	92
2008	11	14	11	4	1	2	6	2	5	8	2	5	7	8	9	95
2009	15	8	6	3	2	4	4	1	3	1	6	1	5	8	6	73
2010	10	6	5	5	4	6	6	8	3	3	5	4	4	7	13	89
2011	5	7	6	7	8	3	7	3	3	4	6	4	5	5	11	84

School mass-examination was revised in 2003.

Upper-limitation age of BCG vaccination was changed from 4 years to 6 months, with introduction of direct vaccination policy in 2005.

Previous table Number of prefectures by number of childhood TB patients, 1980–2011

Year	Number of childhood TB patients							Total
	0	1	2~4	5~9	10~14	15~19	20+(cases)	
1980	0	0	1	6	7	4	29	47
1985	0	0	5	11	10	2	19	47
1990	0	3	13	11	8	2	10	47
1995	3	6	14	13	4	2	5	47
2000	9	8	13	10	3	1	3	47
2005	17	8	13	7	2	0	0	47
2006	19	13	8	6	1	0	0	47
2007	17	12	11	5	2	0	0	47
2008	14	12	16	4	1	0	0	47
2009	27	6	8	4	2	0	0	47
2010	15	14	14	3	0	0	1	47
2011	19	11	12	4	0	0	1	47

【Elderly】

Rate per 100,000 population

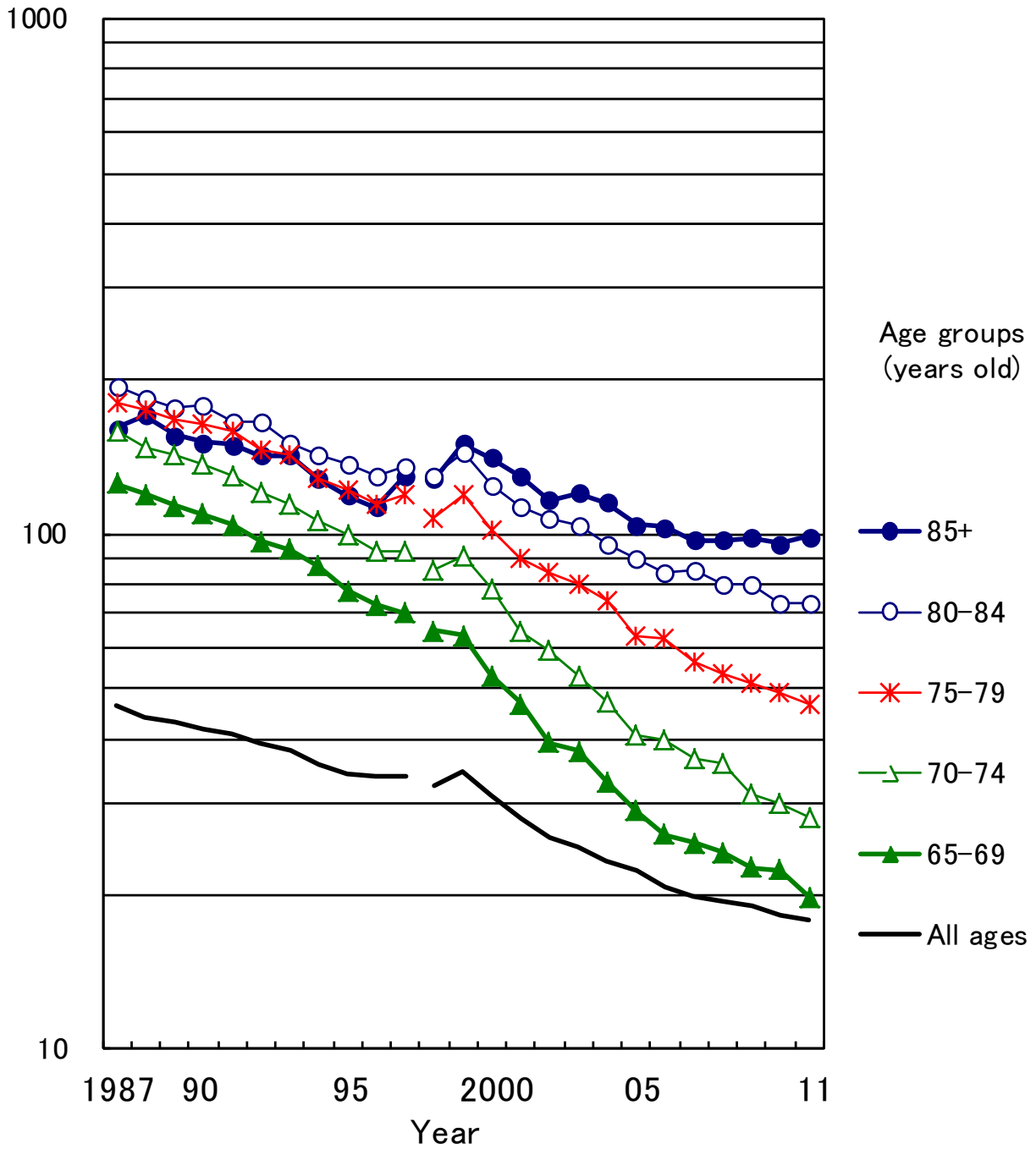


Fig. 2 Annual trend of elderly tuberculosis notification rates per 100,000 population by age group, all forms, 1987 _ 2011

Note: New criteria for tuberculosis notification have been applied since 1998.

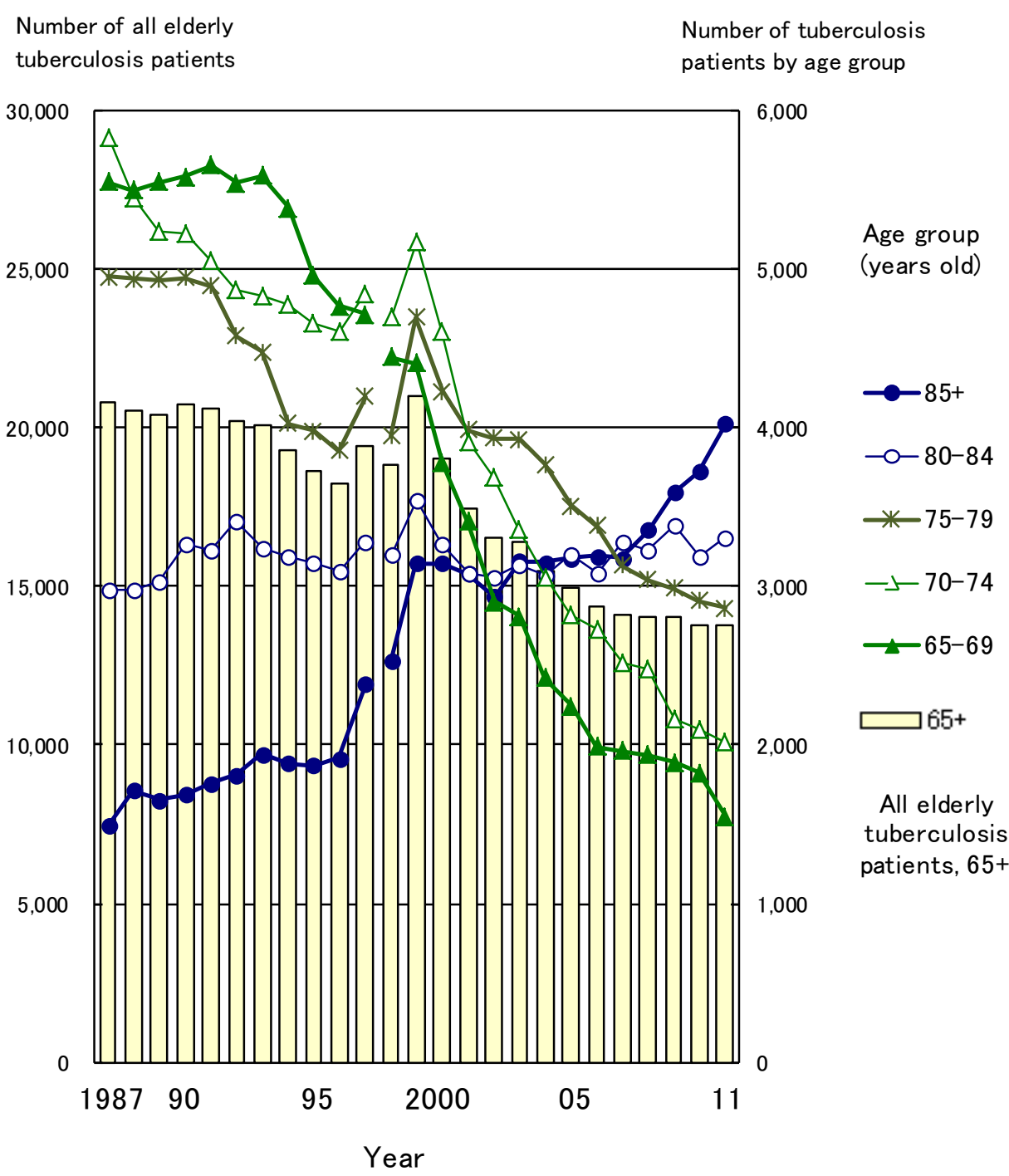


Fig.3 Annual trend of the number of newly notified elderly tuberculosis patients by age group, 1987-2011

Note: New criteria for tuberculosis notification have been applied since 1998.

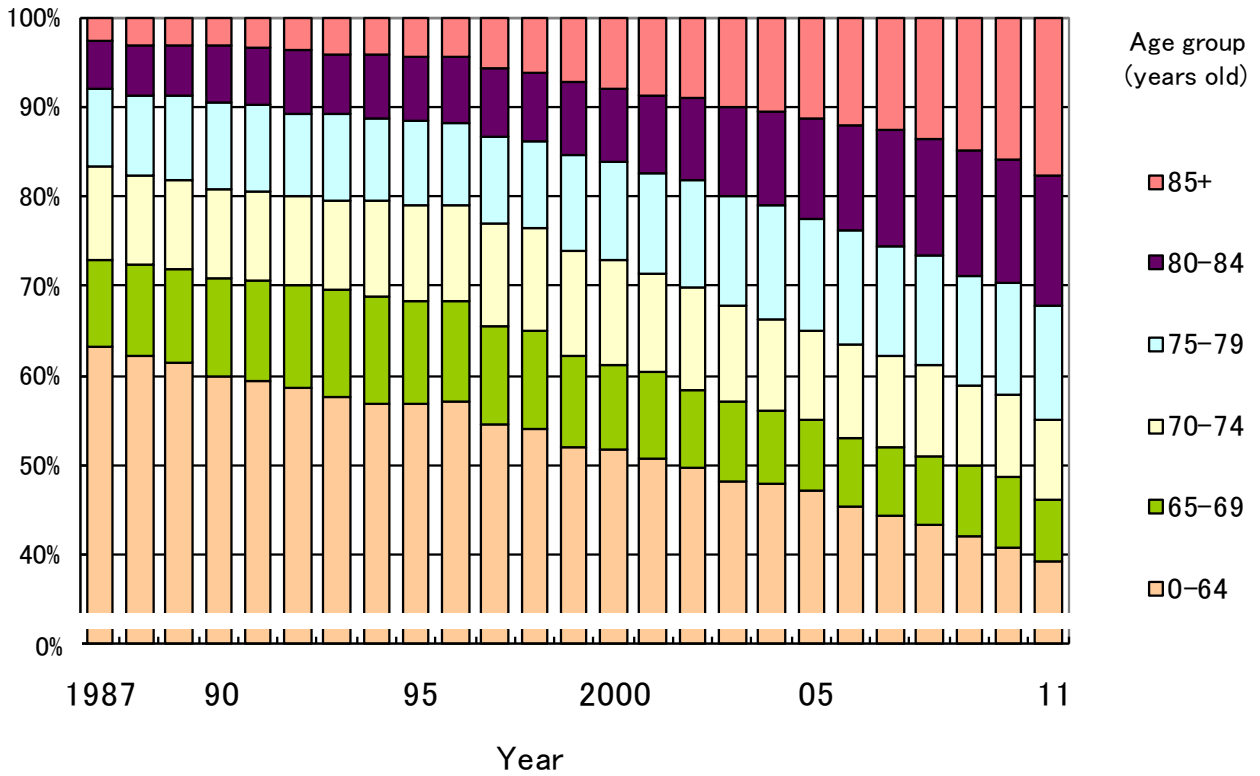


Fig. 4 Annual trend of the proportion of elderly tuberculosis patients among all newly notified tuberculosis patients, 1987–2011

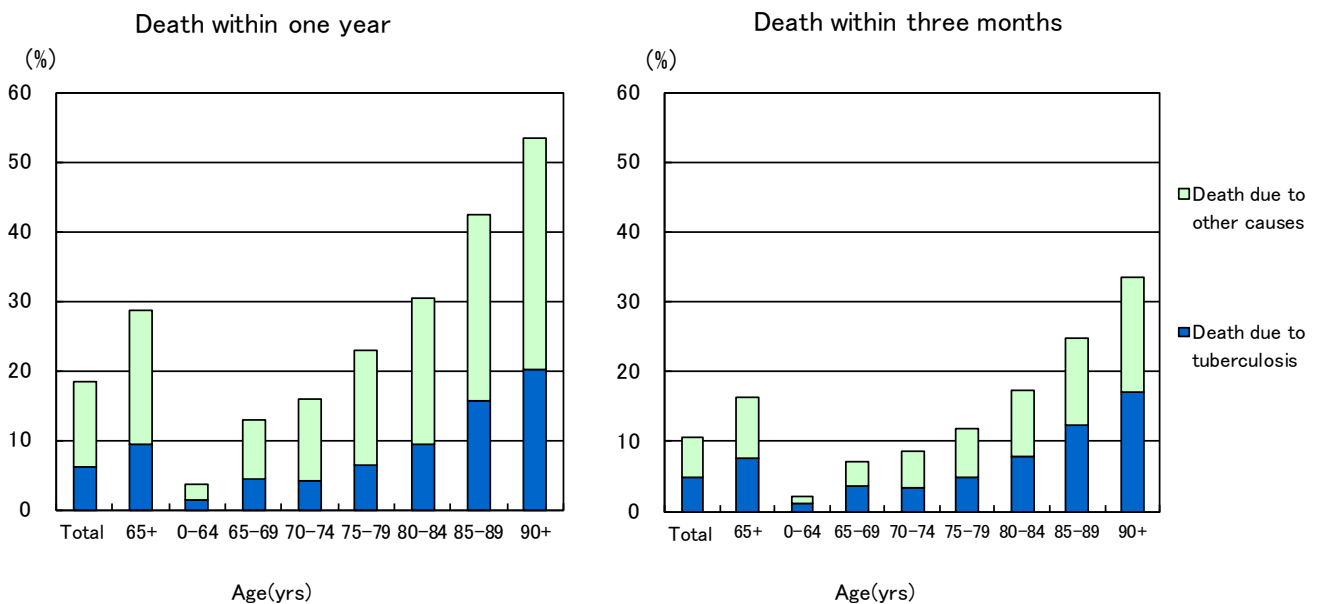


Fig.5 Proportion of death among newly notified tuberculosis patients in 2010 by age group, cause of death and duration till death

Table 4 Comparison of epidemiological indicators of newly notified tuberculosis patients by sex and age group, 2011

		Age group (years old)					
		All ages	Adults		The elderly		
			15-64	all 65+	65-74	75-84	85+
Number of newly notified tuberculosis patients (all forms, n)	Total	22,681	8,841	13,756	3,566	6,166	4,024
	Male	13,994	5,489	8,470	2,423	3,878	2,169
	Female	8,687	3,352	5,286	1,143	2,288	1,855
Tuberculosis notification rate (all forms, per 100,000 population)	Total	17.7	10.9	46.2	23.7	58.0	98.9
	Male	22.8	13.7	66.8	34.2	87.3	189.3
	Female	13.2	8.3	31.0	14.4	36.9	63.4
Number of newly notified extra-pulmonary tuberculosis patients (n)	Total	5,162	1,598	3,541	931	1,639	971
	Male	2,727	835	1,875	520	886	469
	Female	2,435	763	1,666	411	753	502
Proportion of extra-pulmonary tuberculosis patients among newly notified tuberculosis patients (%)	Total	22.8	18.1	25.7	26.1	26.6	24.1
	Male	19.5	15.2	22.1	21.5	22.8	21.6
	Female	28.0	22.8	31.5	36.0	32.9	27.1
Number of newly notified pulmonary tuberculosis patients (n)	Total	17,519	7,243	10,215	2,635	4,527	3,053
	Male	11,267	4,654	6,595	1,903	2,992	1,700
	Female	6,252	2,589	3,620	732	1,535	1,353
Proportion of pulmonary tuberculosis patients among newly notified tuberculosis patients (%)	Total	77.2	81.9	74.3	73.9	73.4	75.9
	Male	80.5	84.8	77.9	78.5	77.2	78.4
	Female	72.0	77.2	68.5	64.0	67.1	72.9
Proportion of bacteriologically positive tuberculosis patients among all pulmonary tuberculosis patients (%)	Total	82.3	74.0	88.6	82.4	89.0	93.3
	Male	83.6	77.1	88.4	83.8	88.5	93.5
	Female	80.0	68.4	88.8	78.7	90.0	93.1
Proportion of sputum-smear positive pulmonary tuberculosis patients among all pulmonary tuberculosis patients (%)	Total	49.4	41.6	55.2	49.4	56.1	58.9
	Male	51.2	45.0	55.7	52.7	56.5	57.5
	Female	46.2	35.4	54.4	40.7	55.4	60.5
Proportion of cavitory pulmonary tuberculosis patients among all pulmonary tuberculosis patients (%)	Total	32.8	35.6	30.9	35.5	30.7	27.3
	Male	36.9	40.9	34.2	39.6	33.8	29.0
	Female	25.4	26.1	24.9	25.0	24.8	25.1
Proportion of far-advanced cavitory pulmonary tuberculosis patients among all pulmonary tuberculosis patients (%)	Total	1.7	2.3	1.3	1.6	1.4	1.0
	Male	2.1	2.9	1.5	1.9	1.6	1.1
	Female	1.1	1.3	1.0	0.7	1.2	0.9
Proportion of symptomatic pulmonary tuberculosis patients upon diagnosis among all pulmonary tuberculosis (%)	Total	74.8	64.8	82.2	76.5	82.5	86.7
	Male	75.6	66.2	82.4	78.0	82.1	87.9
	Female	73.4	62.2	81.8	72.7	83.2	85.2
Proportion of pulmonary tuberculosis patients with only symptoms other than respiratory symptoms among symptomatic pulmonary tuberculosis patients (%)	Total	22.7	18.0	25.3	23.8	23.6	28.9
	Male	21.7	17.8	23.8	23.9	22.2	26.6
	Female	24.5	18.3	28.0	23.5	26.2	31.9
Proportion of patient delay of two months or more among symptomatic pulmonary tuberculosis patients (%)*	Total	18.6	25.8	14.5	19.4	13.4	12.5
	Male	18.9	25.8	15.1	19.9	13.6	13.0
	Female	17.9	25.7	13.4	17.7	13.0	12.0
Proportion of doctor delay of one month or more among symptomatic pulmonary tuberculosis patients (%)*	Total	22.7	20.0	24.2	24.3	25.1	22.8
	Male	21.5	17.3	23.9	22.5	25.3	23.0
	Female	24.8	25.1	24.6	29.1	24.6	22.7
Proportion of total delay of three months or more among symptomatic pulmonary tuberculosis patients (%)*	Total	19.4	25.5	16.0	20.9	15.4	13.2
	Male	19.0	24.1	16.3	20.2	15.5	13.6
	Female	20.1	28.0	15.6	23.0	15.3	12.6
Proportion of tuberculosis patients detected as out-patient from other diseases among newly notified tuberculosis patients (%)	Total	11.1	6.4	14.2	16.4	15.1	10.7
	Male	11.7	6.5	15.1	16.3	16.0	12.0
	Female	10.2	6.2	12.8	16.8	13.7	9.1
Proportion of tuberculosis patients detected as in-patient from other diseases among newly notified tuberculosis patients (%)	Total	12.9	5.1	17.9	13.7	17.9	21.4
	Male	12.8	5.9	17.3	14.1	17.2	21.1
	Female	13.0	4.0	18.8	13.0	19.2	21.7

Subjects: * Excluding the patients of unknown delays

Previous table Number and proportion of elderly TB by prefecture and city, 2011

65+ (yrs)			85+ (yrs)		
Area	<i>n</i>	%	Area	<i>n</i>	%
Japan	13,756	60.6	Japan	4,024	17.7
Kumamoto	258	78.4	Shimane	45	32.4
Nagasaki	232	78.1	Kochi	46	31.5
Hokkaido	328	76.6	Kagawa	43	30.9
Miyazaki	137	76.5	Nagasaki	88	29.6
Toyama	120	75.9	Kumamoto	97	29.5
Niigata city	54	75.0	Hiroshima	83	29.1
Shizuoka	234	74.5	Niigata	56	28.6
Wakayama	173	73.9	Kyoto	51	26.8
Iwate	86	73.5	Okayama city	26	26.8
Kitakyushu city	168	73.0	Toyama	42	26.6
niigata	143	73.0	Nagano	57	26.3
Yamagata	95	72.5	Gunma	58	25.9
Tokushima	133	72.3	Ishikawa	48	25.3
Gifu	312	71.9	Okayama	54	25.2
Aomori	142	71.7	Miyazaki	45	25.1
.
Saitama city	119	52.7	Osaka	157	13.4
Osaka city	574	51.8	Kanagawa	61	13.3
Saitama	480	51.3	Sagamihara city	16	12.3
Yokohama city	337	50.8	Chiba	96	11.2
Kanagawa	227	49.3	Tokyo 23wards	249	10.8
Chiba	405	47.3	Sakai city	22	10.7
Chiba city	76	44.4	Saitama	99	10.6
Tokyo 23wards	999	43.5	Kawasaki city	29	9.4
Kawasaki city	133	43.2	Osaka city	103	9.3
Sagamihara city	51	39.2	Chiba city	15	8.8

Descending order by proportion of elderly TB patients