

【Case Finding】

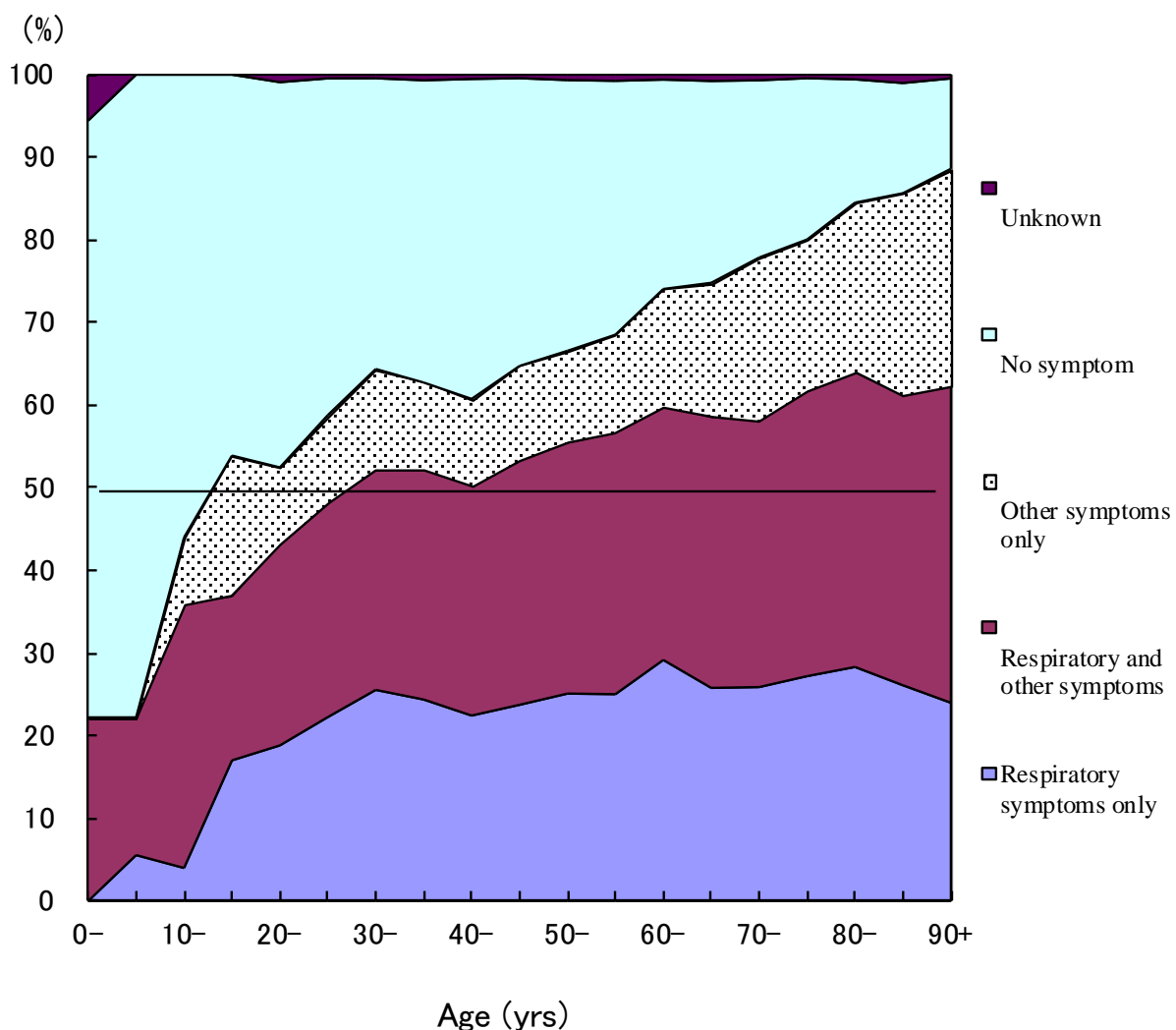


Fig.1 Proportion of symptoms among newly notified pulmonary TB patients by 5 years age group, in 2011

Respiratory symptoms include cough, sputum expectoration, bloody sputum, and hemoptysis. Other symptoms include wheezing, chest pain, back pain, dyspnea, fever, night sweating, fatigue tendency, and weight loss.

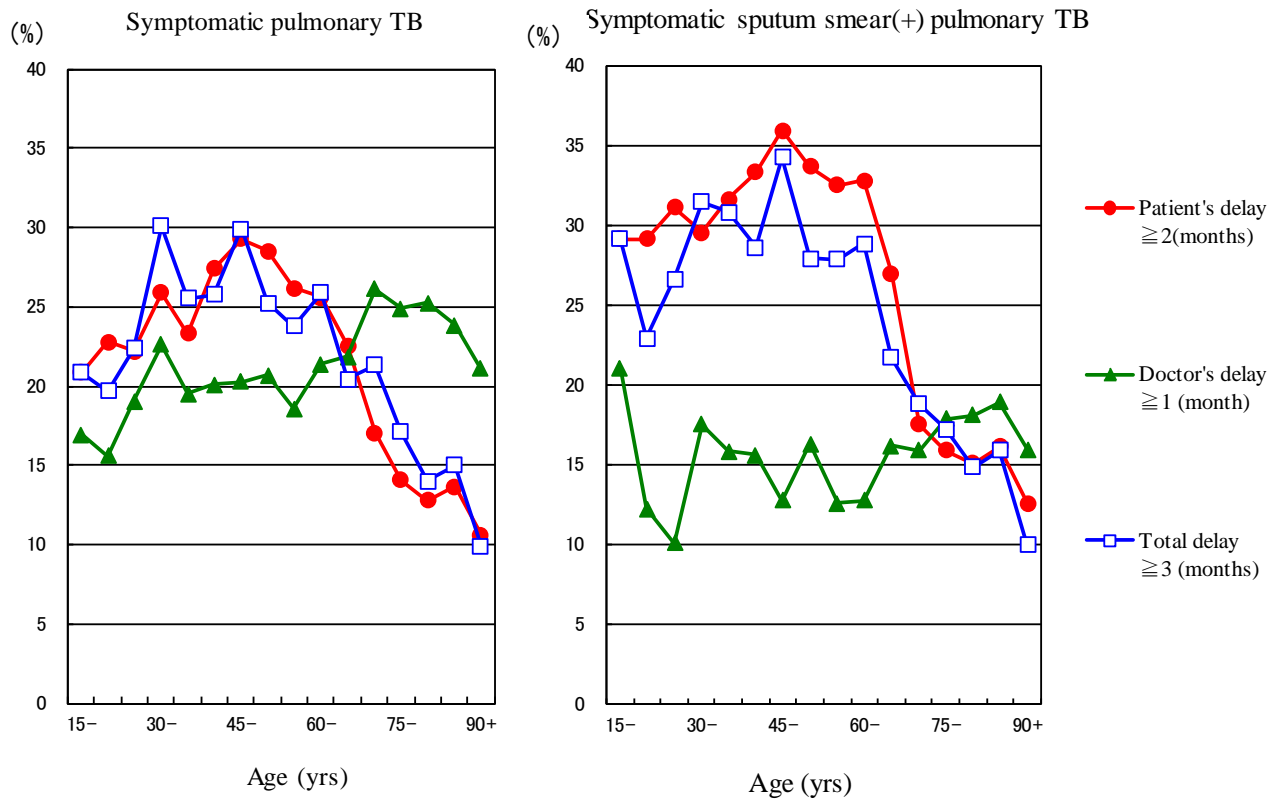


Fig.2 Proportion of patient delay, doctor delay and total delay among symptomatic pulmonary tuberculosis patients by 5-year age group, in 2011

Patient delay : The amount of time between the onset of symptoms and the initial consultation visit to a medical institution is 2 months or more.

Doctor delay : The amount of time between the initial consultation visit of the patient to a medical institution and the diagnosis of tuberculosis is 1 month or more.

Total delay : The amount of time between the onset of symptoms and the diagnosis of tuberculosis is 3 months or more.

Table1 Proportion of mode of detection among newly notified TB patients, 1998-2011

Year	Newly notified TB patients	Individual medical checkup	Mass screening				Contact examination		Medical institutions			Others	Unknown
			Schools	Residents	Employees	Facilities	Family	Others	Outpatients with TB symptoms(*1)	Inpatients with other diseases	Outpatients with other diseases		
	<i>n</i>	%	%	%	%	%	%	%	%	%	%	%	
1998	41,033	2.6	1.0	3.8	7.6	0.4	1.5	1.2	78.3	-	-	2.7	1.0
1999	43,818	2.6	0.9	3.4	7.6	0.5	1.5	1.4	78.5	-	-	2.9	0.8
2000	39,384	2.3	1.1	3.6	8.3	0.5	1.4	1.2	78.3	-	-	2.8	0.5
2001	35,489	2.4	1.1	3.5	8.2	0.5	1.4	1.3	78.6	-	-	2.7	0.3
2002	32,828	2.1	1.1	3.2	8.0	0.6	1.4	1.5	78.7	-	-	2.9	0.5
2003	31,638	2.0	1.0	2.8	7.7	0.6	1.4	1.4	79.7	-	-	2.9	0.5
2004	29,736	2.1	1.0	2.8	7.4	0.6	1.3	1.6	79.6	-	-	2.8	0.9
2005	28,319	2.1	0.9	2.4	7.3	0.5	1.4	1.7	80.4	-	-	2.4	0.9
2006	26,384	2.1	0.9	2.3	7.6	0.6	1.3	1.2	81.2	-	-	2.5	0.5
2007	25,311	2.1	0.9	2.5	7.6	0.6	1.4	1.5	67.2	8.0	6.4	1.3	0.6
2008	24,760	2.6	0.8	2.0	7.6	0.6	1.3	1.7	62.0	10.8	8.5	1.3	1.0
2009	24,170	2.5	0.8	2.3	7.2	0.6	1.3	1.3	61.5	11.4	9.2	1.2	0.6
2010	23,261	2.2	1.0	2.3	7.0	0.6	1.3	1.5	59.8	12.0	9.9	1.4	1.0
2011	22,681	2.1	0.8	2.2	6.8	0.6	1.6	2.1	58.1	12.9	11.1	1.5	0.4

TB: tuberculosis

TB symptoms: Respiratory symptoms such as cough, sputum expectoration, bloody sputum, and hemoptysis; and other symptoms such as wheezing, chest pain, back pain, dyspnea, fever, night sweating, fatigue tendency, and weight loss.

Previous table Proportion of mode of detection among newly notified TB patients by age group, 2011

Age groups	Newly notified TB patients	Individual medical checkup	Mass screening				Contact examination		Medical institutions				
			Schools	Residents	Employees	Facilities	Family	Others	Outpatients with TB symptoms(*1)	Inpatients with other	Outpatients with other	Others	Unknown
	<i>n</i>	%	%	%	%	%	%	%	%	%	%	%	%
All forms of TB													
Total	22,681	2.1	0.8	2.2	6.8	0.6	1.6	2.1	58.1	12.9	11.1	1.5	0.4
0-14	84	0.0	1.2	0.0	0.0	0.0	53.6	10.7	27.4	4.8	1.2	1.2	0.0
15-19	157	2.5	26.8	0.0	5.1	0.0	10.2	7.6	44.6	0.0	0.6	1.9	0.6
20-24	631	2.5	16.8	0.3	15.7	0.2	2.2	6.3	49.0	1.4	1.9	3.0	0.6
25-29	786	1.7	3.3	0.4	23.8	0.3	2.0	6.1	55.7	2.3	2.7	1.4	0.4
30-34	827	1.8	0.8	0.8	23.1	0.2	2.5	5.4	57.7	2.4	2.1	2.5	0.5
35-39	891	2.6	0.2	0.9	21.9	0.6	2.6	4.5	59.1	1.7	4.3	1.5	0.2
40-44	961	3.3	0.2	2.4	19.8	0.7	2.4	4.5	56.5	3.4	4.2	2.1	0.5
45-49	859	2.4	0.1	1.9	18.0	0.8	2.6	5.4	54.1	5.5	6.8	1.5	0.9
50-54	914	3.5	0.0	1.6	17.7	0.9	1.9	3.7	54.9	5.5	7.1	2.3	0.9
55-59	1,135	2.9	0.0	2.8	14.3	0.6	2.5	2.9	53.4	8.3	8.9	2.9	0.5
60-64	1,680	2.7	0.1	2.6	6.8	0.7	2.4	2.6	56.7	10.1	12.6	2.0	1.0
65-69	1,552	2.7	0.0	3.9	2.6	0.6	1.0	1.7	59.1	11.3	14.9	1.8	0.2
70-74	2,014	2.1	0.0	3.7	0.5	0.3	0.9	0.6	56.7	15.6	17.6	1.6	0.3
75-79	2,861	2.0	0.0	3.2	0.3	0.3	0.8	0.3	59.5	16.5	16.0	0.9	0.1
80-84	3,305	1.4	0.0	2.2	0.1	0.4	0.5	0.5	60.4	19.2	14.4	0.7	0.3
85-89	2,592	1.5	0.0	1.5	0.1	0.6	0.5	0.5	62.1	20.3	11.7	0.9	0.3
90+	1,432	0.8	0.0	0.6	0.1	1.4	0.3	1.0	62.7	23.4	8.8	0.6	0.3
(Re-count) Sputum smear positive pulmonary TB													
Total	8,654	1.5	0.3	1.6	4.0	0.4	0.5	0.7	65.3	13.8	10.3	1.2	0.2
0-14	5	0.0	0.0	0.0	0.0	0.0	20.0	0.0	80.0	0.0	0.0	0.0	0.0
15-19	45	4.4	22.2	0.0	4.4	0.0	2.2	6.7	57.8	0.0	2.2	0.0	0.0
20-24	157	1.9	8.9	0.0	8.9	0.0	1.9	0.6	73.2	0.6	0.0	3.8	0.0
25-29	203	0.5	0.5	0.0	16.3	0.0	0.0	0.5	77.8	1.5	1.0	1.5	0.5
30-34	241	1.2	0.0	0.8	12.9	0.0	0.4	1.2	77.2	2.5	2.1	1.7	0.0
35-39	279	1.8	0.0	1.8	14.3	0.0	1.1	1.1	72.4	1.4	4.3	1.4	0.4
40-44	321	1.9	0.6	1.9	11.2	0.3	2.2	2.5	69.2	3.4	4.4	2.2	0.3
45-49	304	1.6	0.0	1.3	13.5	0.7	0.7	1.3	67.4	5.3	5.9	1.6	0.7
50-54	343	2.0	0.0	0.6	12.5	0.6	1.2	1.7	67.1	5.2	7.0	2.0	0.0
55-59	476	1.3	0.0	1.7	12.0	0.6	0.6	0.6	65.5	7.6	6.9	2.9	0.2
60-64	641	1.7	0.2	1.6	5.3	0.2	0.3	1.2	67.4	9.4	10.0	2.2	0.6
65-69	600	2.8	0.0	2.2	1.7	0.3	0.7	1.0	67.0	11.2	11.3	1.7	0.2
70-74	701	1.7	0.0	2.3	0.1	0.6	0.1	0.4	60.2	18.0	14.8	1.7	0.0
75-79	1,116	1.4	0.0	2.0	0.3	0.4	0.2	0.1	62.4	17.4	15.1	0.6	0.1
80-84	1,425	1.5	0.0	2.2	0.0	0.4	0.5	0.2	61.3	19.4	13.9	0.4	0.2
85-89	1,139	0.7	0.0	1.8	0.2	0.4	0.2	0.3	64.2	20.0	11.7	0.5	0.2
90+	658	0.8	0.0	0.5	0.0	0.9	0.2	0.8	66.3	23.1	7.0	0.3	0.3

TB: tuberculosis

*1 TB symptoms: Respiratory symptoms such as cough, sputum expectoration, bloody sputum, and hemoptysis; and other symptoms such as wheezing, chest pain, back pain, dyspnea, fever, night sweating, fatigue tendency, and weight loss.

Previous table Number of newly notified TB patients by occupation, sex and age group, 2011

Sex/Age group	Total	Service workers	Nurses/Public health nurses	Medical doctors/dentists	Other medical workers	Teachers/Nursery nurses	Pupils/Students	Other regular workers	Other temporary/daily workers	Other self-employed	Housekeepers	Infants	Unemployed/Others	Unknown
Male	13,994	289	33	66	82	56	255	2,646	529	770	21	20	8,916	311
0-14	35	-	-	-	-	-	14	-	-	-	-	20	1	-
15-19	76	1	-	-	1	-	56	8	4	2	-	-	4	-
20-24	330	20	1	1	3	2	128	117	22	3	-	-	28	5
25-29	410	33	3	6	9	5	41	224	33	8	-	-	38	10
30-39	891	58	9	8	23	10	13	518	62	54	2	-	113	21
40-49	1,159	54	9	6	15	10	-	612	85	91	1	-	234	42
50-59	1,447	48	7	14	20	18	1	634	120	119	2	-	430	34
60-69	2,259	53	3	8	6	7	2	427	135	210	1	-	1,325	82
70-79	3,158	18	1	6	3	3	-	87	63	183	8	-	2,721	65
80+	4,229	4	-	17	2	1	-	19	5	100	7	-	4,022	52
Female	8,687	264	317	15	160	65	218	787	306	149	647	21	5,561	177
0-14	49	-	-	-	-	-	28	-	-	-	-	21	-	-
15-19	81	5	-	-	1	-	65	4	3	-	-	-	3	-
20-24	301	27	19	2	8	11	91	78	20	3	8	-	28	6
25-29	376	33	54	4	19	10	24	113	23	2	36	-	48	10
30-39	827	71	97	4	39	14	8	213	66	19	121	-	153	22
40-49	661	49	75	4	48	13	1	178	63	11	85	-	121	13
50-59	602	35	57	29	15	1	111	58	17	86	-	-	175	18
60-69	973	29	13	1	16	1	-	73	60	40	164	-	540	36
70-79	1,717	14	1	-	-	1	-	14	10	39	105	-	1,496	37
80+	3,100	1	1	-	-	-	-	3	3	18	42	-	2,997	35

Previous table Proportion of mode of detection among newly notified pulmonary TB patients aged 20-59 years by occupation, 2011

	Pulmonary TB patients	Individual medical checkup	Mass screening			Contact examination		Clinics/Hospitals			Others/Unknown
			Residents	Employees	Schools/Facilities	Family	Others	Outpatients with TB symptoms(*2)	Inpatients with other diseases	Outpatients with other diseases	
			n	%	%	%	%	%	%	%	
Total	5,772	3.0	1.7	22.5	3.0	2.7	5.5	50.5	3.4	4.7	2.9
Service workers	340	0.9	2.1	19.1	0.0	2.9	5.9	56.2	3.2	8.5	1.2
Medical workers(*1)	499	2.4	0.8	33.3	0.2	2.4	17.8	35.9	1.4	2.8	3.0
Teachers/ Nursery nurses	90	4.4	1.1	42.2	2.2	2.2	4.4	34.4	1.1	3.3	4.4
Students	267	4.1	1.9	1.1	49.1	0.7	3.7	32.2	0.0	1.5	5.6
Other regular workers	2,348	2.6	0.6	37.9	0.2	2.2	4.6	45.1	1.6	3.6	1.7
Other temporary/ daily workers	465	3.0	3.0	15.3	0.9	4.1	6.2	62.2	0.6	3.4	1.3
Other self-employed	271	4.4	3.3	7.0	0.0	3.0	3.0	64.6	7.4	5.5	1.8
Housekeepers	247	6.9	6.1	2.8	0.0	6.9	1.6	62.8	2.0	7.7	3.2
Jobless/ Others	1,110	3.0	2.8	2.3	2.6	2.8	3.9	60.9	9.6	7.4	4.7
Unknown	135	5.2	0.7	8.9	2.2	3.7	0.7	53.3	5.9	5.2	14.1

*1

Medical workers include nurses, public health nurses, medical doctors and dentists, physical therapists, occupational therapists, medical technologists, radiographers, and co-medicals.

*2

TB symptoms: Respiratory symptoms such as cough, sputum expectoration, bloody sputum, and hemoptysis; and other symptoms such as wheezing, chest pain, back pain, dyspnea, fever, night sweating, fatigue tendency, and weight loss.

【Tuberculosis Characteristics upon Diagnosis(1)】

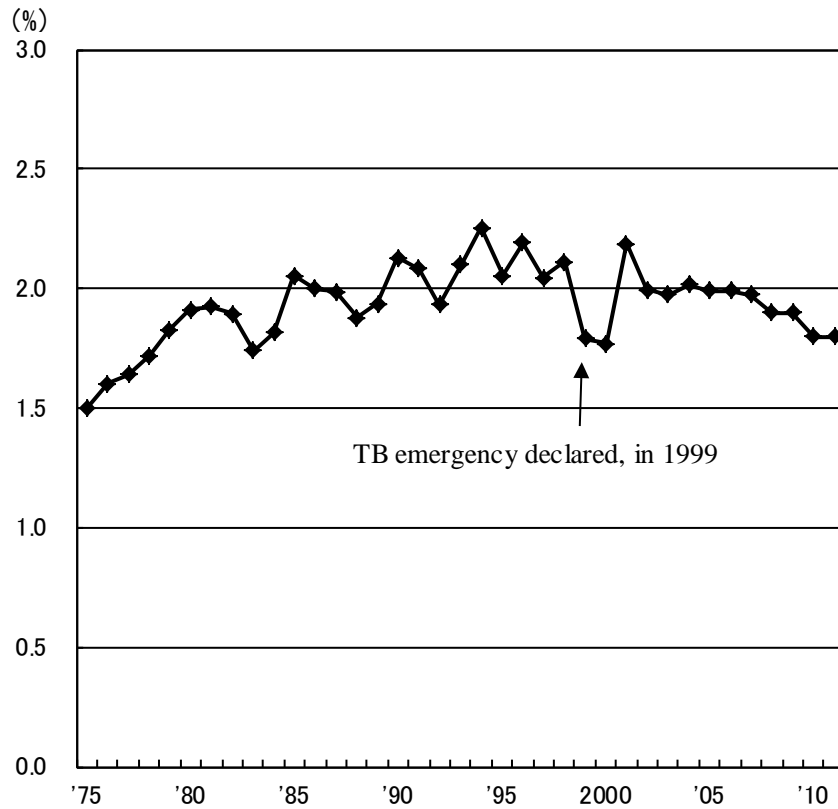
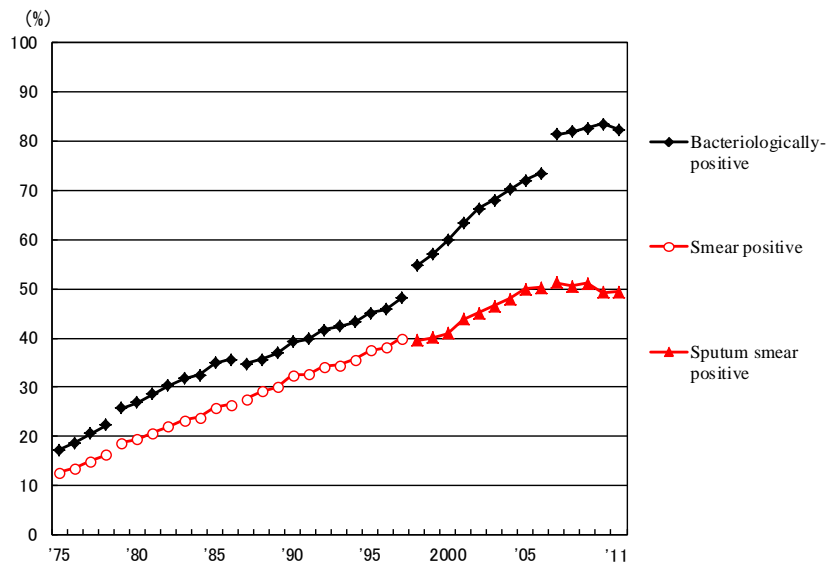


Fig.3 Proportion of far-advanced cavitary cases among newly notified pulmonary TB patients, 1975-2011



Previous Fig.
Proportion of bacteriologically confirmed cases among newly notified pulmonary tuberculosis patients, 1975-2011

Sources of information and subjects:

Annual tuberculosis reports from public health centers

1975-1978: All forms of tuberculosis

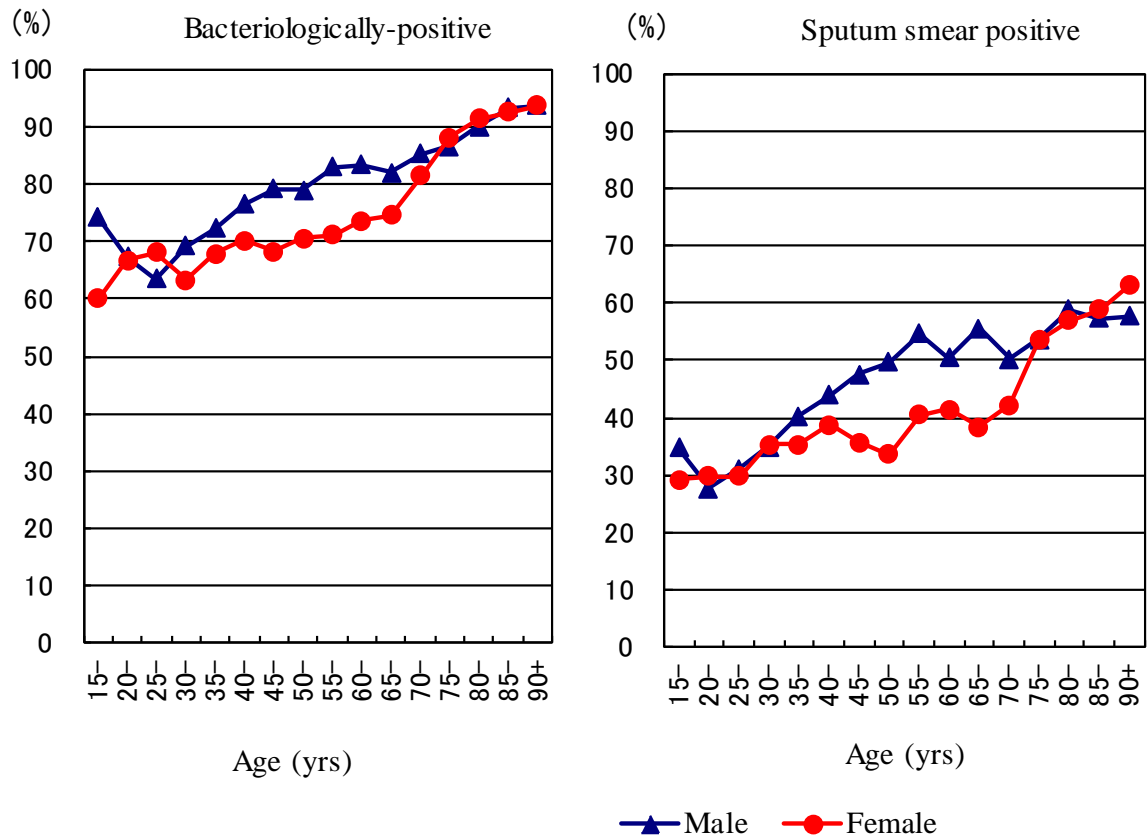
1979-1986: Pulmonary tuberculosis

Nationwide computerized tuberculosis surveillance system

1987-1997: Pulmonary Tuberculosis

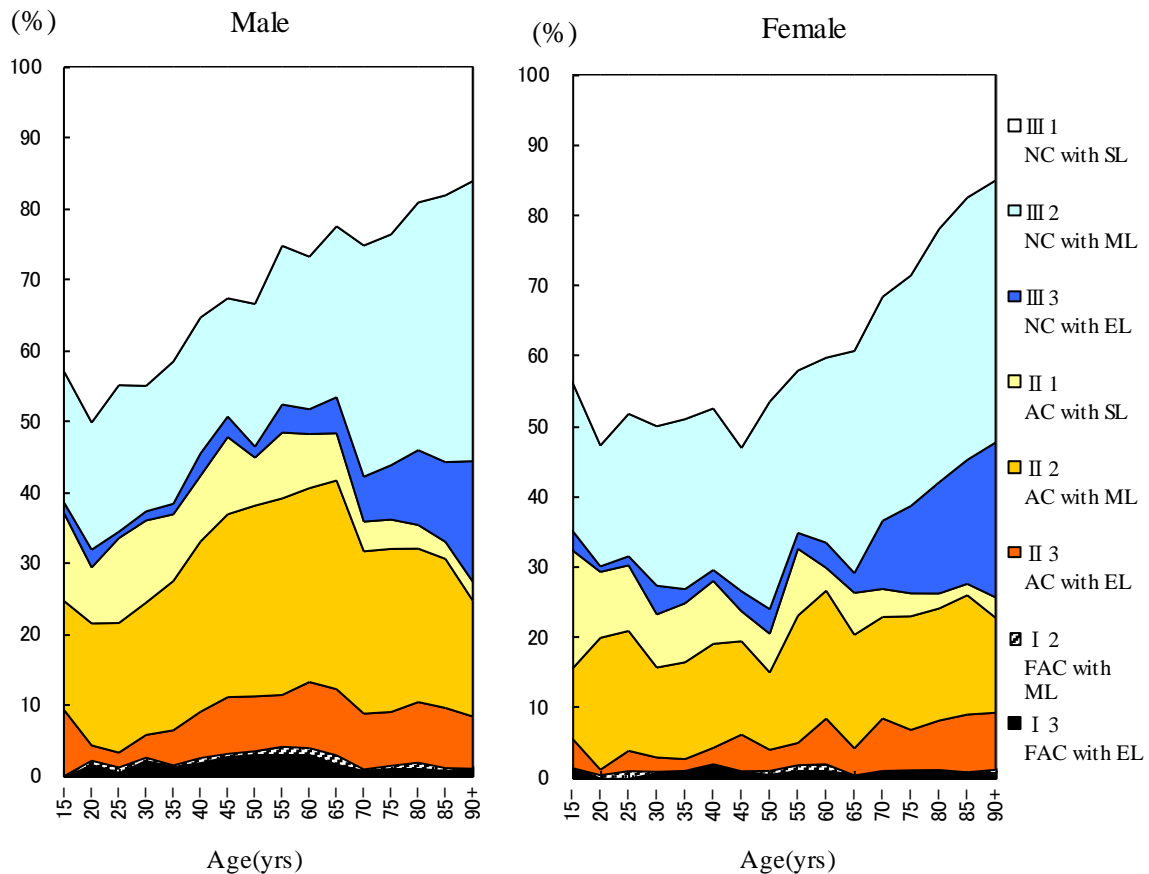
1998-2006: Pulmonary tuberculosis (New patient criteria for notification were applied)

2007-2009: Pulmonary tuberculosis (Item of nucleic acid amplification was added)



Previous Fig.

Proportion of bacteriologically confirmed cases among newly notified pulmonary tuberculosis patients by sex and 5-year age group, 2011



Previous Fig. Proportion of cases classified by X-ray Gakkai classification by sex and 5-year age group, 2011
 NC : Non-cavitary SL : Slight lesion AC : Advanced cavitary ML : Moderate lesion
 FAC: Far-advance cavitary EL : Extensive lesion

Previous table Proportion of cavitary or/and sputum smear positive cases among newly notified pulmonary TB patients aged 30-59 years, 2011

	Male						Female							
	Pulmonary TB	Cavitary or sputum smear(+)			Cavitary and sputum smear(+)			Pulmonary TB	Cavitary or sputum smear(+)			Cavitary and sputum smear(+)		
		n	%	Ratio	n	%	Ratio		n	%	Ratio	n	%	Ratio
Service workers	134	85	63.4	1.5	46	34.3	2.3	113	63	55.8	1.6	31	27.4	4.0
Medical workers	95	41	43.2	1.0	14	14.7	1.0	294	100	34.0	1.0	20	6.8	1.0
Teachers/ Nursery nurses	32	18	56.3	1.3	3	9.4	0.6	32	15	46.9	1.4	2	6.3	0.9
Other regular workers	1,490	757	50.8	1.2	355	23.8	1.6	391	146	37.3	1.1	45	11.5	1.7
Other temporary/ daily workers	242	179	74.0	1.7	124	51.2	3.5	145	77	53.1	1.6	25	17.2	2.5
Other self-employed	226	154	68.1	1.6	85	37.6	2.6	30	16	53.3	1.6	4	13.3	2.0
Jobless	651	430	66.1	1.5	253	38.9	2.6	341	191	56.0	1.6	85	24.9	3.7
Others	87	45	51.7	1.2	19	21.8	1.5	257	122	47.5	1.4	34	13.2	1.9
Total	2,957	1,709	57.8		899	30.4		1,603	730	45.5		246	15.3	

Others:Houskeepers/ Students/ Unknown

Ratio: The ratio of each proportion to that of medical workers

【Tuberculosis Characteristics upon Diagnosis(2)】

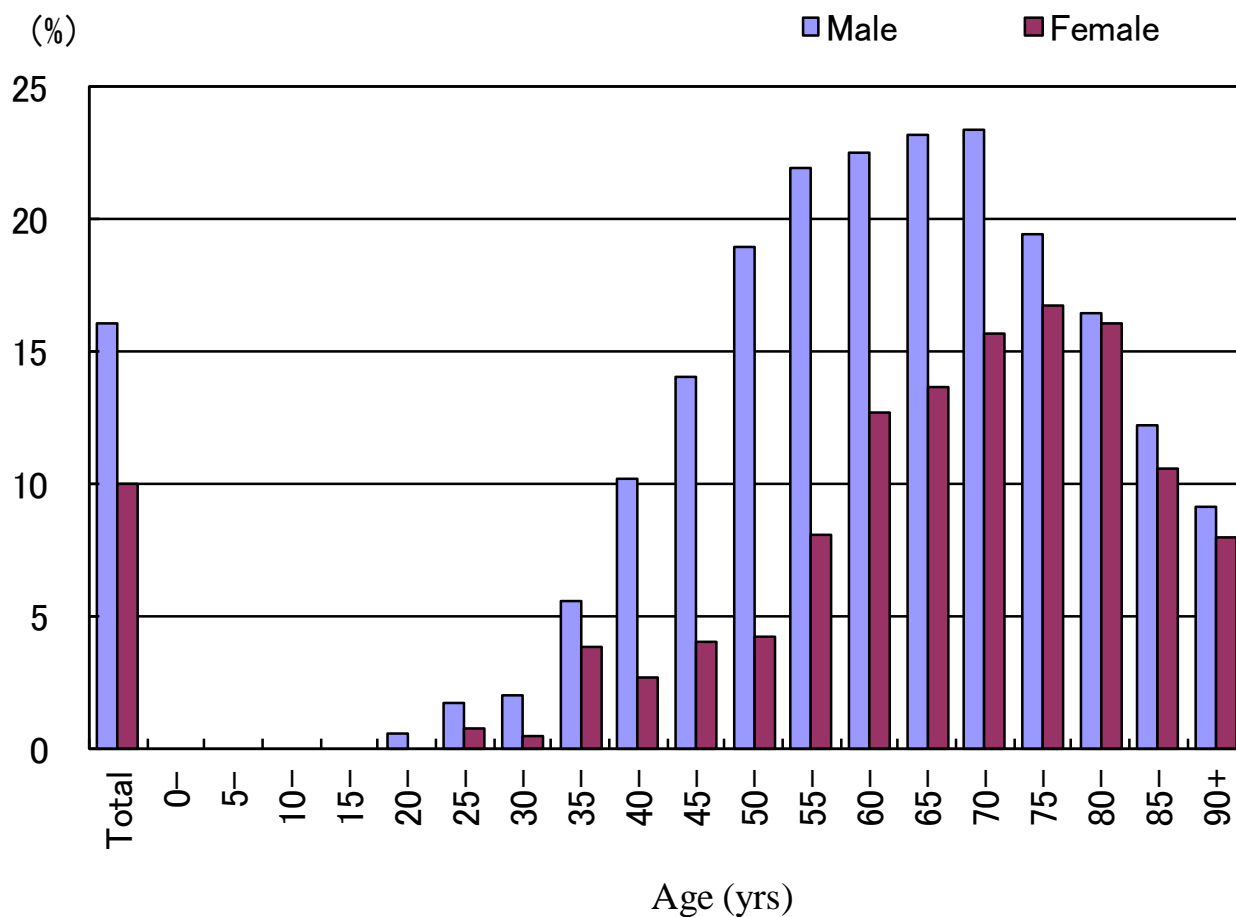


Fig.4 Proportion of newly notified tuberculosis patients with diabetes mellitus in each age-group by sex, 2011

Table 2 Number of newly notified tuberculosis patients with HIV infection, by sex and age group, 2011 and 2007–2011

Age	Sputum smear positive		Other bacteriologic ally- positive		Bacteriologic ally- negative		Extra-pulmonary		Total	
	M	F	M	F	M	F	M	F	M	F
2011 Calendar year										
Total	20 (3)	7 (4)	13 (2)	3 (1)	6 (1)	2 (1)	20 (3)	4 (2)	59 (9)	16 (8)
0-19	0	0	0	0	0	0	1	0	1	0
20-24	0	0	0	0	1 (1)	1 (1)	0	0	1 (1)	1 (1)
25-29	1 (1)	1	0	0	0	0	1	0	2 (1)	1
30-34	1 (1)	0	0	0	0	0	1	1 (1)	2 (1)	1 (1)
35-39	4	2 (2)	2	0	0	0	4	0	10	2 (2)
40-44	3	2 (2)	2 (1)	0	0	1	4 (2)	1 (1)	9 (3)	4 (3)
45-49	4 (1)	0	1	1 (1)	0	0	4 (1)	0	9 (2)	1 (1)
50-54	1	0	4 (1)	0	1	0	0	0	6 (1)	0
55-59	1	0	0	0	1	0	1	0	3	0
60-64	1	0	2	0	2	0	0	0	5	0
65-69	0	0	1	0	1	0	2	0	4	0
70-74	1	1	0	0	0	0	0	1	1	2
75-79	0	0	0	0	0	0	1	0	1	0
80+	3	1	1	2	0	0	1	1	5	4
2007-2011 Calendar year										
Total	86 (9)	16 (12)	49 (9)	7 (4)	27 (2)	4 (2)	101 (21)	14 (8)	263 (41)	41 (26)
0-19	1 (1)	0	0	0	0	0	1	0	2 (1)	0
20-24	2 (1)	0	0	0	1 (1)	1 (1)	1	1	4 (2)	2 (1)
25-29	5 (3)	3 (2)	1 (1)	1 (1)	0	0	7 (1)	0	13 (5)	4 (3)
30-34	8 (3)	4 (4)	5	2 (1)	1	1 (1)	11 (4)	3 (2)	25 (7)	10 (8)
35-39	16	3 (3)	14 (4)	1 (1)	4	0	17 (3)	2 (2)	51 (7)	6 (6)
40-44	17	3 (3)	9 (3)	0	6 (1)	2	24 (10)	4 (3)	56 (14)	9 (6)
45-49	10 (1)	0	4	1 (1)	2	0	19 (3)	0	35 (4)	1 (1)
50-54	7	0	8 (1)	0	3	0	5	0	23 (1)	0
55-59	4	0	1	0	4	0	6	1 (1)	15	1 (1)
60-64	5	1	4	0	3	0	3	0	15	1
65-69	5	0	1	0	1	0	2	0	9	0
70-74	1	1	1	0	1	0	1	1	4	2
75-79	2	0	0	0	1	0	3	1	6	1
80+	3	1	1	2	0	0	1	1	5	4

() : Re-count of foreigners

HIV : Human Immunodeficiency Virus. M : male patients, F : female patients.

Table 3 Drug susceptibility test results among newly notified pulmonary tuberculosis patients, by treatment history, 2007—2011

Treatment history, Culture examination results, Drug susceptibility test results	2007				2008				2009				2010				2011			
	n	%	%	%	n	%	%	%	n	%	%	%	n	%	%	%	n	%	%	%
Total																				
Pulmonary tuberculosis	19,893	100%			19,393	100%			18,912	100%			18,328	100%			17,519	100%		
Culture result obtained	12,690	63.8			12,087	62.3			14,146	74.8			14,656	80.0			13,902	79.4		
Culture positive	9,983	50.2	100%		9,480	48.9	100%		10,902	57.6	100%		11,495	62.7	100%		10,915	62.3	100%	
DST result obtained	4,173		41.8	100%	4,332		45.7	100%	6,920		63.5	100%	8,380		72.9	100%	8,046		73.7	100%
MDR	50			1.2	48			1.1	56			0.8	68			0.8	60			0.7
Any INH resistance	258			6.2	211			4.9	346			5.0	396			4.7	386			4.8
Any RFP resistance	72			1.7	64			1.5	80			1.2	95			1.1	86			1.1
Any resistance	628			15.0	550			12.7	903			13.0	1,025			12.2	998			12.4
New treatment																				
Pulmonary tuberculosis	18,220	100%			17,515	100%			17,125	100%			16,481	100%			15,761	100%		
Culture result obtained	11,602	63.7			10,845	61.9			12,801	74.8			13,164	79.9			12,454	79.0		
Culture positive	9,148	50.2	100%		8,540	48.8	100%		9,899	57.8	100%		10,374	62.9	100%		9,800	62.2	100%	
DST result obtained	3,752		41.0	100%	3,885		45.5	100%	6,276		63.4	100%	7,553		72.8	100%	7,226		73.7	100%
MDR	23			0.6	28			0.7	34			0.5	38			0.5	38			0.5
Any INH resistance	194			5.2	163			4.2	276			4.4	311			4.1	297			4.1
Any RFP resistance	36			1.0	39			1.0	50			0.8	56			0.7	57			0.8
Any resistance	516			13.8	470			12.1	780			12.4	876			11.6	858			11.9
Re-treatment																				
Pulmonary tuberculosis	1,409	100%			1,542	100%			1,468	100%			1,461	100%			1,351	100%		
Culture result obtained	946	67.1			1,059	68.7			1,134	77.2			1,217	83.3			1,151	85.2		
Culture positive	713	50.6	100%		779	50.5	100%		830	56.5	100%		885	60.6	100%		863	63.9	100%	
DST result obtained	376		52.7	100%	391		50.2	100%	559		67.3	100%	694		78.4	100%	661		76.6	100%
MDR	27			7.2	20			5.1	20			3.6	27			3.9	22			3.3
Any INH resistance	63			16.8	48			12.3	65			11.6	79			11.4	80			12.1
Any RFP resistance	36			9.6	24			6.1	28			5.0	36			5.2	28			4.2
Any resistance	107			28.5	75			19.2	112			20.0	132			19.0	122			18.5
No information about treatment history																				
Pulmonary tuberculosis	264	100%			336	100%			319	100%			386	100%			407	100%		
Culture result obtained	142	53.8			183	54.5			211	66.1			275	71.2			297	73.0		
Culture positive	122	46.2	100%		161	47.9	100%		173	54.2	100%		236	61.1	100%		252	61.9	100%	
DST result obtained	45		36.9	100%	56		34.8	100%	85		49.1	100%	133		56.4	100%	159		63.1	100%
MDR	0			0.0	0			0.0	2			2.4	3			2.3	0			0.0
Any INH resistance	1			2.2	0			0.0	5			5.9	6			4.5	9			5.7
Any RFP resistance	0			0.0	1			1.8	2			2.4	3			2.3	1			0.6
Any resistance	5			11.1	5			8.9	11			12.9	17			12.8	18			11.3

DST: Drug susceptibility test MDR: Multi-drug resistant INH: isoniazid RFP: rifampicin

Cases having drug resistance are counted independently by drug.

Previous table Drug susceptibility test results among newly notified pulmonary tuberculosis patients, by sex and age group, 2010 and 2007–2010

Age group	Total										New treatment (Re-count)									
	Male					Female					Male					Female				
	DST result obtained	MDR	Any INH resistance	Any RFP resistance	Any resistance	DST result obtained	MDR	Any INH resistance	Any RFP resistance	Any resistance	DST result obtained	MDR	Any INH resistance	Any RFP resistance	Any resistance	DST result obtained	MDR	Any INH resistance	Any RFP resistance	Any resistance
2011 Calendar year																				
Total	5,303	36	260	56	689	2,743	24	126	30	309	4,698	23	196	38	587	2,528	15	101	19	271
0-19	31	0	4	0	5	38	0	2	0	12	30	0	4	0	5	37	0	2	0	11
20-29	226	6	21	8	49	222	6	17	7	33	211	3	16	5	44	209	5	15	5	30
30-39	304	2	15	4	47	252	3	16	3	34	283	1	13	3	43	241	3	15	3	32
40-49	426	4	19	8	64	204	2	3	4	23	401	3	16	5	57	194	1	2	2	20
50-59	633	3	34	6	106	179	3	7	5	22	586	2	30	5	99	173	2	5	4	19
60-69	936	6	47	13	138	249	1	15	1	38	838	5	35	9	112	234	1	12	1	35
70-79	1,203	7	56	8	142	539	4	23	5	58	1,061	5	42	6	123	481	1	19	2	50
80+	1,544	8	64	9	138	1,060	5	43	5	89	1,288	4	40	5	104	959	2	31	2	74
2007-2011 Calendar year																				
Total	21,434	174	1,084	254	2,837	10,417	108	513	143	1,267	19,062	102	837	154	2,408	9,630	59	404	84	1,092
0-19	143	2	11	2	31	145	1	12	1	32	139	2	11	2	31	138	1	11	1	29
20-29	1,104	21	71	28	199	931	25	75	32	165	1,055	15	60	21	186	881	17	65	22	150
30-39	1,461	10	87	19	231	1,122	13	69	22	169	1,374	6	79	15	214	1,069	10	61	15	152
40-49	1,778	16	100	23	270	816	13	42	20	124	1,656	9	86	13	238	773	8	37	14	114
50-59	2,864	27	153	43	448	716	10	36	14	95	2,634	16	129	27	401	673	3	25	7	82
60-69	4,015	30	224	51	604	1,013	10	59	11	149	3,599	20	182	30	515	941	4	41	4	123
70-79	4,745	43	233	56	596	2,036	19	90	22	230	4,088	22	154	28	469	1,838	7	65	10	190
80+	5,324	25	205	32	458	3,638	17	130	21	303	4,517	12	136	18	354	3,317	9	99	11	252
2007-2011 Calendar year																				
Total	100%	0.8	5.1	1.2	13.2	100%	1.0	4.9	1.4	12.2	100%	0.5	4.4	0.8	12.6	100%	0.6	4.2	0.9	11.3
0-19	100	1.4	7.7	1.4	21.7	100	0.7	8.3	0.7	22.1	100	1.4	7.9	1.4	22.3	100	0.7	8.0	0.7	21.0
20-29	100	1.9	6.4	2.5	18.0	100	2.7	8.1	3.4	17.7	100	1.4	5.7	2.0	17.6	100	1.9	7.4	2.5	17.0
30-39	100	0.7	6.0	1.3	15.8	100	1.2	6.1	2.0	15.1	100	0.4	5.7	1.1	15.6	100	0.9	5.7	1.4	14.2
40-49	100	0.9	5.6	1.3	15.2	100	1.6	5.1	2.5	15.2	100	0.5	5.2	0.8	14.4	100	1.0	4.8	1.8	14.7
50-59	100	0.9	5.3	1.5	15.6	100	1.4	5.0	2.0	13.3	100	0.6	4.9	1.0	15.2	100	0.4	3.7	1.0	12.2
60-69	100	0.7	5.6	1.3	15.0	100	1.0	5.8	1.1	14.7	100	0.6	5.1	0.8	14.3	100	0.4	4.4	0.4	13.1
70-79	100	0.9	4.9	1.2	12.6	100	0.9	4.4	1.1	11.3	100	0.5	3.8	0.7	11.5	100	0.4	3.5	0.5	10.3
80+	100	0.5	3.9	0.6	8.6	100	0.5	3.6	0.6	8.3	100	0.3	3.0	0.4	7.8	100	0.3	3.0	0.3	7.6

DST: Drug susceptibility test. MDR: Multi-drug resistance, i.e., resistant to at least INH and RFP. INH: Isoniazid. RFP: Rifampicin.

Previous table Drug susceptibility test results among newly notified pulmonary tuberculosis patients, by sex and age group, 2007-2011
(Re-count of foreigners)

Age group	Total										New treatment (Re-count)									
	Male					Female					Male					Female				
	DST result obtained	MDR	Any INH resistance	Any RFP resistance	Any resistance	DST result obtained	MDR	Any INH resistance	Any RFP resistance	Any resistance	DST result obtained	MDR	Any INH resistance	Any RFP resistance	Any resistance	DST result obtained	MDR	Any INH resistance	Any RFP resistance	Any resistance
2007-2011 Calendar year																				
Total	492	18	41	22	90	585	33	76	42	133	461	11	28	15	78	546	24	64	30	115
0-19	19	1	4	1	8	18	1	2	1	2	19	1	4	1	8	17	1	1	1	1
20-29	211	14	22	18	42	263	22	43	27	73	201	9	14	13	37	250	16	36	20	65
30-39	101	2	6	2	13	158	6	18	8	29	97	1	5	1	11	146	4	16	5	26
40-49	56	1	5	1	13	82	1	7	3	18	51	0	3	0	10	76	1	7	2	16
50-59	36	0	0	0	3	24	0	2	0	3	33	0	0	0	3	21	0	1	0	1
60-69	26	0	1	0	7	16	1	2	1	3	22	0	0	0	6	16	1	2	1	3
70-79	23	0	1	0	2	12	2	2	2	3	21	0	1	0	2	9	1	1	1	1
80+	20	0	2	0	2	12	0	0	0	2	17	0	1	0	1	11	0	0	0	2
2007-2011 Calendar year																				
Total	100%	3.7	8.3	4.5	18.3	100%	5.6	13.0	7.2	22.7	100%	2.4	6.1	3.3	16.9	100%	4.4	11.7	5.5	21.1
0-19	100	5.3	21.1	5.3	42.1	100	5.6	11.1	5.6	11.1	100	5.3	21.1	5.3	42.1	100	5.9	5.9	5.9	5.9
20-29	100	6.6	10.4	8.5	19.9	100	8.4	16.3	10.3	27.8	100	4.5	7.0	6.5	18.4	100	6.4	14.4	8.0	26.0
30-39	100	2.0	5.9	2.0	12.9	100	3.8	11.4	5.1	18.4	100	1.0	5.2	1.0	11.3	100	2.7	11.0	3.4	17.8
40-49	100	1.8	8.9	1.8	23.2	100	1.2	8.5	3.7	22.0	100	0.0	5.9	0.0	19.6	100	1.3	9.2	2.6	21.1
50-59	100	0.0	0.0	0.0	8.3	100	0.0	8.3	0.0	12.5	100	0.0	0.0	0.0	9.1	100	0.0	4.8	0.0	4.8
60-69	100	0.0	3.8	0.0	26.9	100	6.3	12.5	6.3	18.8	100	0.0	0.0	0.0	27.3	100	6.3	12.5	6.3	18.8
70-79	100	0.0	4.3	0.0	8.7	100	16.7	16.7	16.7	25.0	100	0.0	4.8	0.0	9.5	100	11.1	11.1	11.1	11.1
80+	100	0.0	10.0	0.0	10.0	100	0.0	0.0	0.0	16.7	100	0.0	5.9	0.0	5.9	100	0.0	0.0	0.0	18.2

DST: Drug susceptibility test. MDR: Multi-drug resistance, i.e., resistant to at least INH and RFP. INH: Isoniazid. RFP: Rifampicin.