

Fig. 1 Trend of childhood tuberculosis notification rates, per 100,000 population, 1962-2012

Table 1 Number (rates) of childhood tuberculosis patients and specific extra-pulmonary tuberculosis, 1965–2012

Year	Newly notified tuberculosis aged 0–14 yrs		No. of meningeal tuberculosis		No. of miliary tuberculosis	
	Number	Rate	0–14 yrs	0–4 yrs (Rate)	0–14 yrs	0–4 yrs (Rate)
1965	44,180	175.6	—	—	—	—
1970	18,197	73.4	—	—	—	—
1975	4,905	18.0	28	22 (0.221)	—	—
1980	1,893	6.9	22	14 (0.164)	—	—
1985	1,088	4.2	—	—	—	—
1990	518	2.3	9	4 (0.061)	10	8 (0.122)
1995	340	1.7	8	8 (0.136)	8	8 (0.136)
2000	220	1.2	7	4 (0.069)	3	3 (0.052)
2005	117	0.67	3	1 (0.018)	3	1 (0.018)
2006	85	0.49	0	0	1	1 (0.018)
2007	92	0.53	0	0	0	0
2008	95	0.55	0	0	1	1 (0.019)
2009	73	0.43	1	1 (0.019)	4	3 (0.056)
2010	89	0.53	0	0	0	0
2011	84	0.50	1	0	2	1(0.019)
2012	63	0.38	1	1(0.019)	0	0

Extra-pulmonary tuberculosis: Cases are counted independently.

Rate: per 100,000

—: Not available

Table 2 Number of newly notified childhood tuberculosis patients by age and mode of detection, 2012

	Age (yrs)															Total
	0	1	2	3	4	5	6	7	8	9	10	11	12	13	14	
School mass-investigation	—	—	—	—	—	—	—	—	—	—	1	—	—	—	—	1
Family contact investigation	5	2	4	4	2	1	2	1	1	2	—	2	—	4	2	32
Other contact investigation	—	—	—	—	1	1	—	—	—	1	1	—	—	—	—	4
At clinics/hospitals (symptoms)	3	3	2	2	—	—	—	1	—	1	1	—	2	3	4	22
Others	—	1	—	1	—	—	—	1	—	—	—	—	1	—	—	4
Total	8	6	6	7	3	2	2	3	1	4	3	2	3	7	6	63

Table 3 Proportion of BCG vaccinated cases among newly notified childhood tuberculosis patients and LTBI cases, 2012

	Age in years										5-9	10-14	Total	
	Age in months					0	1	2	3	4				Total
	0-2	3-5	6-8	9-11	Total									
Tuberculosis cases	1	3	2	2	8	6	6	7	3	30	12	21	63	
BCG vaccinated	0	1	2	2	5	5	6	6	2	24	5	7	36	
BCG not vaccinated	1	1	0	0	2	0	0	0	0	2	2	5	9	
BCG unknown	0	1	0	0	1	1	0	1	1	4	5	9	18	
BCG vaccinated (%)	0.0	50.0	100.0	100.0	71.4	100.0	100.0	100.0	100.0	92.3	71.4	58.3	80.0	
LTBI	34	78	36	30	178	94	77	86	64	499	219	177	895	
BCG vaccinated	5	42	28	21	96	75	60	68	48	347	154	99	600	
BCG not vaccinated	24	23	2	0	49	2	0	0	2	53	8	6	67	
BCG unknown	5	13	6	9	33	17	17	18	14	99	57	72	228	
BCG vaccinated (%)	17.2	64.6	93.3	100.0	66.2	97.4	100.0	100.0	96.0	86.8	95.1	94.3	90.0	

LTBI : Latent Tuberculosis Infection

(%): Proportion of BCG vaccinated cases among all TB/LTBI cases excluding BCG unknown

Previous table Trend of newly notified childhood TB patients by age and calendar year, 1998-2012

Year	Age (yrs)															Total
	0	1	2	3	4	5	6	7	8	9	10	11	12	13	14	
1998	31	39	15	18	16	12	18	14	13	10	7	7	29	18	27	274
1999	43	35	24	23	9	10	15	8	7	10	8	9	27	27	25	280
2000	29	27	19	14	14	8	10	13	5	7	14	11	21	12	16	220
2001	27	18	14	9	7	4	14	11	11	8	8	4	23	18	19	195
2002	30	21	14	12	3	9	8	5	6	6	2	3	14	15	7	155
2003	23	15	17	5	12	9	5	4	1	5	4	3	4	10	10	127
2004	20	18	9	5	10	5	2	3	5	4	3	4	12	6	11	117
2005	23	11	5	13	4	4	3	7	5	3	6	5	7	13	8	117
2006	9	6	8	6	6	6	3	3	2	4	3	4	3	13	9	85
2007	21	5	7	12	2	6	5	2	4	2	2	4	4	7	9	92
2008	11	14	11	4	1	2	6	2	5	8	2	5	7	8	9	95
2009	15	8	6	3	2	4	4	1	3	1	6	1	5	8	6	73
2010	10	6	5	5	4	6	6	8	3	3	5	4	4	7	13	89
2011	5	7	6	7	8	3	7	3	3	4	6	4	5	5	11	84
2012	8	6	6	7	3	2	2	3	1	4	3	2	3	7	6	63

School mass-examination was revised in 2003.

Upper-limitation age of BCG vaccination was changed from 4 years to 6 months, with introduction of direct vaccination policy in 2005.

Previous table Number of prefectures by number of childhood TB patients, 1980-2012

Year	Number of childhood TB patients							Total
	0	1	2~4	5~9	10~14	15~19	20+(cases)	
1980	0	0	1	6	7	4	29	47
1985	0	0	5	11	10	2	19	47
1990	0	3	13	11	8	2	10	47
1995	3	6	14	13	4	2	5	47
2000	9	8	13	10	3	1	3	47
2005	17	8	13	7	2	0	0	47
2006	19	13	8	6	1	0	0	47
2007	17	12	11	5	2	0	0	47
2008	14	12	16	4	1	0	0	47
2009	27	6	8	4	2	0	0	47
2010	15	14	14	3	0	0	1	47
2011	19	11	12	4	0	0	1	47
2012	22	11	11	3	0	0	0	47

【Elderly】

Rate per 100,000 population

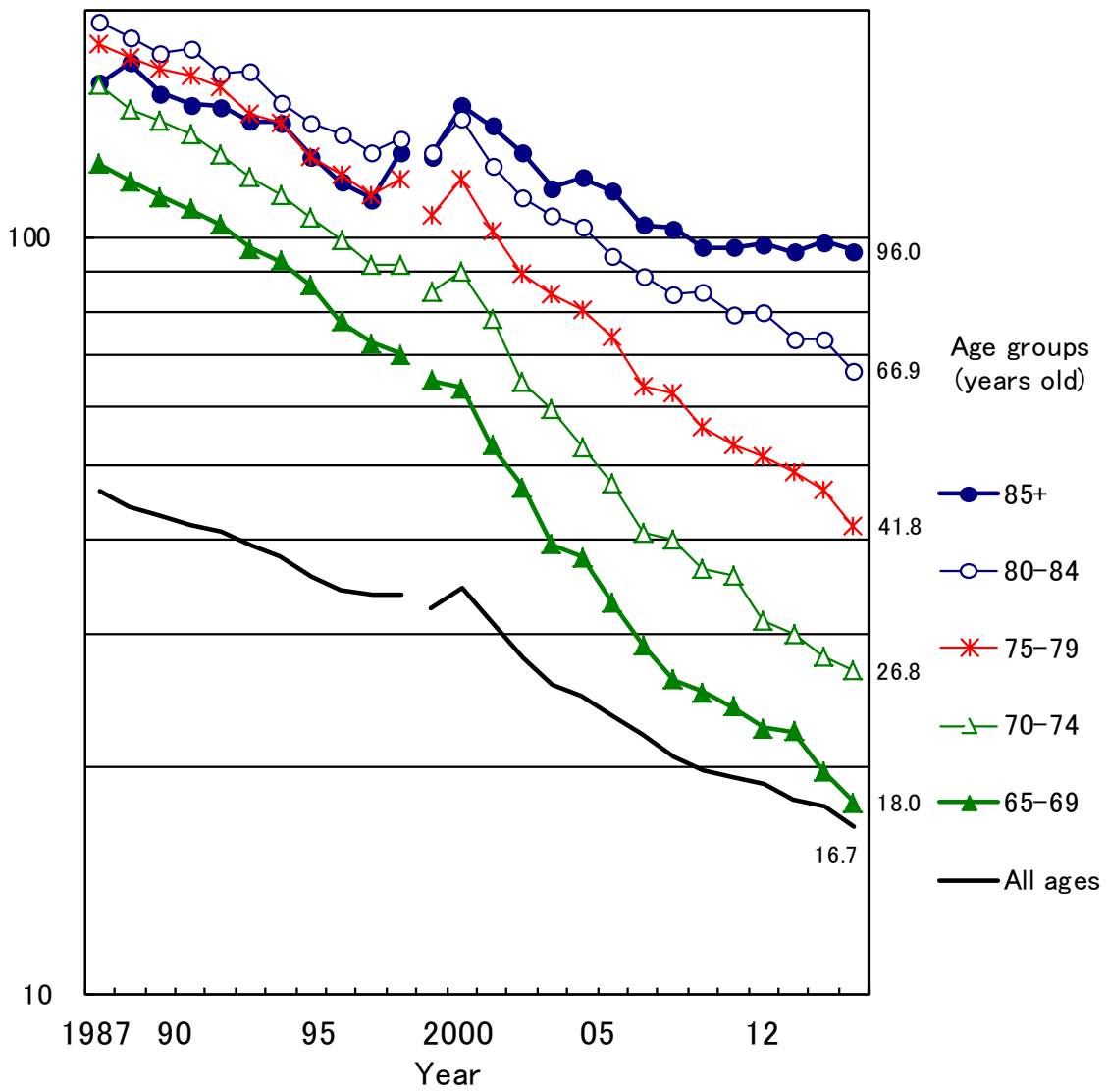


Fig. 2 Annual trend of elderly tuberculosis notification rates per 100,000 population by age group, all forms, 1987–2012

Note: New criteria for tuberculosis notification have been applied since 1998.

Number of all elderly tuberculosis patients

Number of tuberculosis patients by age group

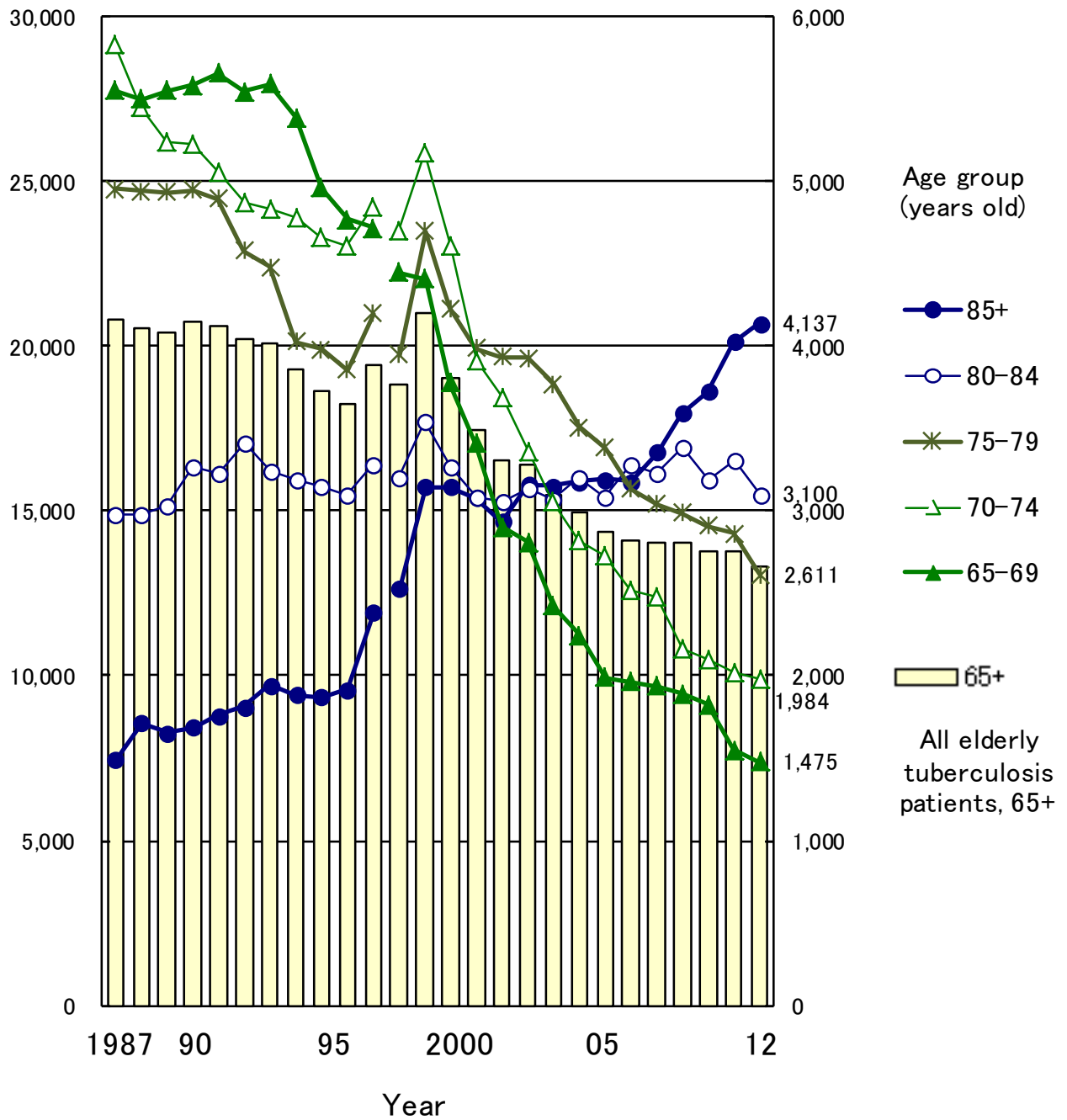


Fig.3 Annual trend of the number of newly notified elderly tuberculosis patients by age group, 1987–2012

Note: New criteria for tuberculosis notification have been applied since 1998.

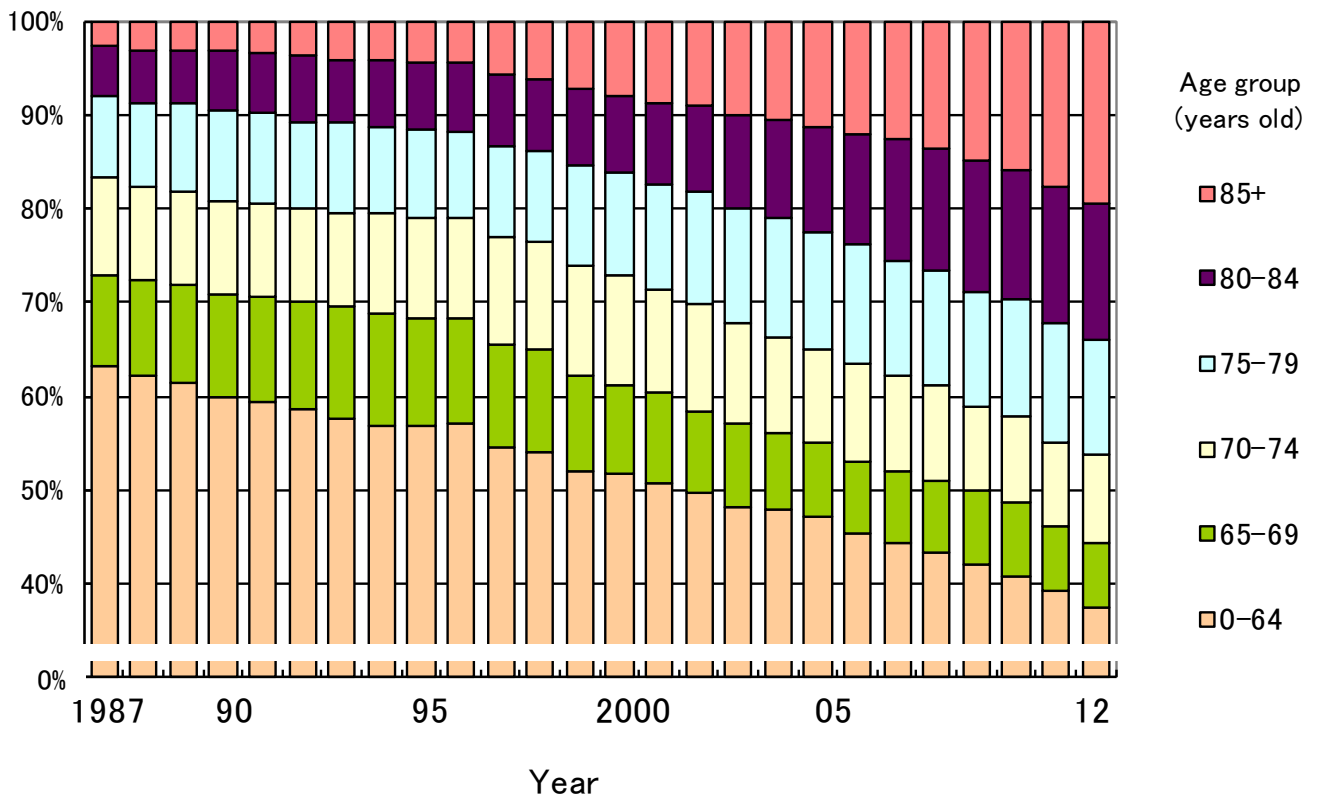


Fig. 4 Annual trend of the proportion of elderly tuberculosis patients among all newly notified tuberculosis patients, 1987–2012

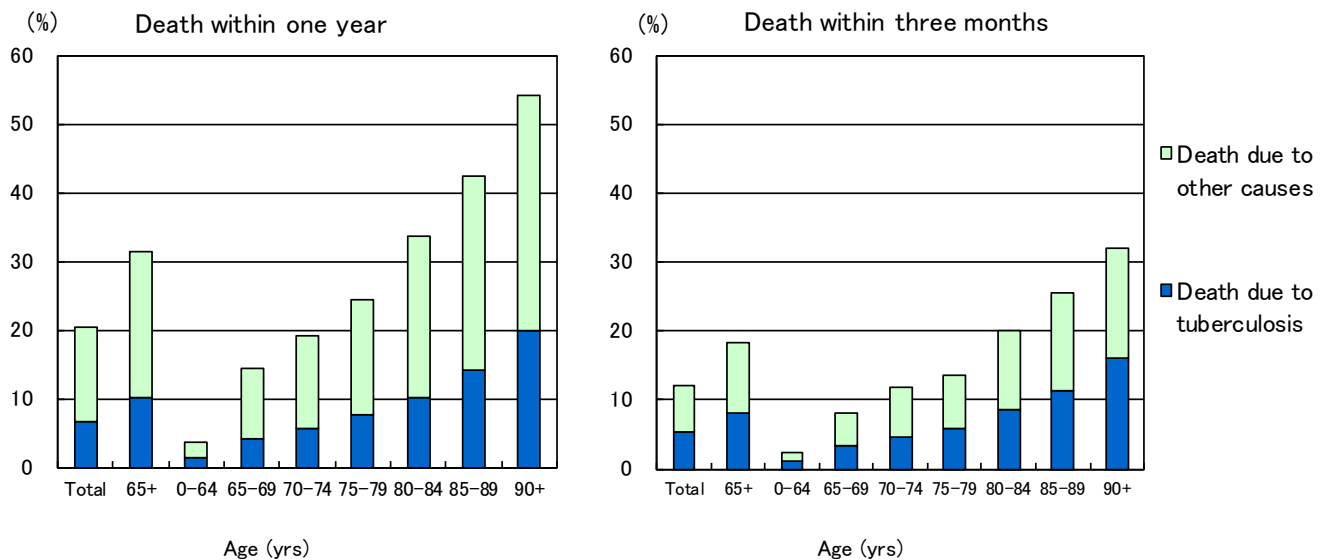


Fig.5 Proportion of death among newly notified tuberculosis patients in 2011 by age group, cause of death and duration till death

Table 4 Comparison of epidemiological indicators of newly notified tuberculosis patients by sex and age group, 2012

		Age group (years old)					
		All ages	Youth and manhood	the elderly			
			15-64	all 65+	65-74	75-84	85+
Number of newly notified tuberculosis patients (all forms, n)	Total	21,283	7,913	13,307	3,459	5,711	4,137
	Male	12,988	4,986	7,968	2,329	3,465	2,174
	Female	8,295	2,927	5,339	1,130	2,246	1,963
Tuberculosis notification rate (all forms, per 100,000 population)	Total	16.7	9.9	43.2	22.2	52.5	96.0
	Male	20.9	12.3	60.5	31.6	75.9	176.0
	Female	12.7	7.4	30.3	13.7	35.5	63.9
Number of newly notified extra-pulmonary tuberculosis patients (n)	Total	4,851	1,497	3,337	850	1,513	974
	Male	2,480	791	1,681	437	787	457
	Female	2,371	706	1,656	413	726	517
Proportion of extra-pulmonary tuberculosis patients among newly notified tuberculosis patients (%)	Total	22.8	18.9	25.1	24.6	26.5	23.5
	Male	19.1	15.9	21.1	18.8	22.7	21.0
	Female	28.6	24.1	31.0	36.5	32.3	26.3
Number of newly notified pulmonary tuberculosis patients (n)	Total	16,432	6,416	9,970	2,609	4,198	3,163
	Male	10,508	4,195	6,287	1,892	2,678	1,717
	Female	5,924	2,221	3,683	717	1,520	1,446
Proportion of pulmonary tuberculosis patients among newly notified tuberculosis patients (%)	Total	77.2	81.1	74.9	75.4	73.5	76.5
	Male	80.9	84.1	78.9	81.2	77.3	79.0
	Female	71.4	75.9	69.0	63.5	67.7	73.7
Proportion of bacteriologically positive tuberculosis patients among all pulmonary tuberculosis patients (%)	Total	84.7	76.4	90.4	86.2	90.4	93.9
	Male	85.6	79.2	90.2	86.9	90.8	93.1
	Female	83.2	71.1	90.7	84.2	89.8	94.8
Proportion of sputum-smear positive pulmonary tuberculosis patients among all pulmonary tuberculosis patients (%)	Total	50.1	41.3	56.0	50.8	56.2	59.9
	Male	51.8	45.2	56.3	53.2	56.9	59.0
	Female	47.2	33.9	55.3	44.6	55.0	61.0
Proportion of cavitory pulmonary tuberculosis patients among all pulmonary tuberculosis patients (%)	Total	32.1	35.4	30.1	35.2	29.8	26.4
	Male	35.8	39.8	33.2	39.1	32.2	28.4
	Female	25.7	27.1	24.8	25.0	25.7	23.9
Proportion of far-advanced cavitory pulmonary tuberculosis patients among all pulmonary tuberculosis patients (%)	Total	1.8	2.5	1.4	2.0	1.1	1.3
	Male	2.1	3.1	1.5	1.9	1.1	1.6
	Female	1.4	1.4	1.3	2.1	1.2	1.0
Proportion of symptomatic pulmonary tuberculosis patients upon diagnosis among all pulmonary tuberculosis (%)	Total	74.2	64.4	80.7	73.2	80.6	86.8
	Male	74.5	65.9	80.4	73.9	80.8	86.8
	Female	73.8	61.8	81.2	71.5	80.3	86.9
Proportion of pulmonary tuberculosis patients with only symptoms other than respiratory symptoms among symptomatic pulmonary tuberculosis patients (%)	Total	22.5	17.1	25.3	22.9	24.8	27.6
	Male	20.5	17.0	22.5	21.0	22.3	24.3
	Female	26.1	17.5	30.0	28.1	29.3	31.6
Proportion of patient delay of two months or more among symptomatic pulmonary tuberculosis patients (%)*	Total	18.7	26.7	14.5	18.3	14.8	11.3
	Male	19.2	27.2	14.6	18.5	14.4	11.1
	Female	18.0	25.6	14.3	17.9	15.6	11.6
Proportion of doctor delay of one month or more among symptomatic pulmonary tuberculosis patients (%)*	Total	22.0	20.2	22.9	23.4	24.3	20.8
	Male	21.4	18.4	23.1	23.0	24.3	21.4
	Female	23.0	23.8	22.6	24.6	24.3	20.0
Proportion of total delay of three months or more among symptomatic pulmonary tuberculosis patients (%)*	Total	19.6	26.1	16.1	21.3	16.7	11.7
	Male	19.7	25.5	16.4	21.1	16.2	11.9
	Female	19.5	27.2	15.8	21.6	17.7	11.4
Proportion of tuberculosis patients detected as out-patient for other diseases among newly notified tuberculosis patients (%)	Total	10.9	6.6	13.5	15.4	15.1	9.5
	Male	11.4	6.6	14.5	14.8	16.1	11.6
	Female	10.0	6.5	11.9	16.7	13.6	7.3
Proportion of tuberculosis patients detected as in-patient for other diseases among newly notified tuberculosis patients (%)	Total	13.8	4.8	19.2	14.5	19.6	22.7
	Male	13.7	5.6	18.8	14.7	19.6	21.9
	Female	14.0	3.5	19.8	13.9	19.5	23.6

Subjects: \* Excluding the patients of unknown delays

Previous table Number and proportion of elderly TB by prefecture and city, 2012

65+ (yrs)			85+ (yrs)		
Area	<i>n</i>	%	Area	<i>n</i>	%
Japan	13,307	62.5	Japan	4,137	19.4
Kochi	78	79.6	Nagano	71	35.0
Kumamoto	138	79.3	Kochi	33	33.7
Shizuoka city	76	79.2	Akita	46	33.6
Saga	113	79.0	Saga	47	32.9
Shimane	101	78.9	Shimane	38	29.7
Miyagi	92	76.7	Shizuoka city	28	29.2
Nagano	155	76.4	Hiroshima	72	28.9
Akita	104	75.9	Niigata city	25	28.4
Kumamoto city	87	75.7	Yamagata	32	27.8
Niigata	138	75.0	Fukui	27	27.3
Sapporo city	135	75.0	Kagawa	45	27.1
Nagasaki	214	74.8	Kumamoto	47	27.0
Fukui	74	74.7	Kumamoto city	31	27.0
Hokkaido	301	74.1	Nagasaki	77	26.9
Ishikawa	119	73.9	Nara	76	26.7
Tokyo	383	54.9	Saitama city	30	15.2
Chiba city	82	54.7	Sakai city	35	14.9
Kanagawa	229	54.1	Kanagawa	63	14.9
Yokohama city	328	53.7	Kawasaki city	39	14.8
Chiba	386	52.3	Tokyo 23wards	316	14.5
Saitama	470	52.1	Chiba	106	14.4
Kawasaki city	134	50.8	Aomori	26	14.2
Tokyo 23wards	1,044	48.0	Saitama	111	12.3
Sagamihara city	45	46.4	Osaka city	124	10.9
Saitama city	90	45.5	Sagamihara city	10	10.3

Descending order by proportion of elderly TB patients