

【Case Finding】

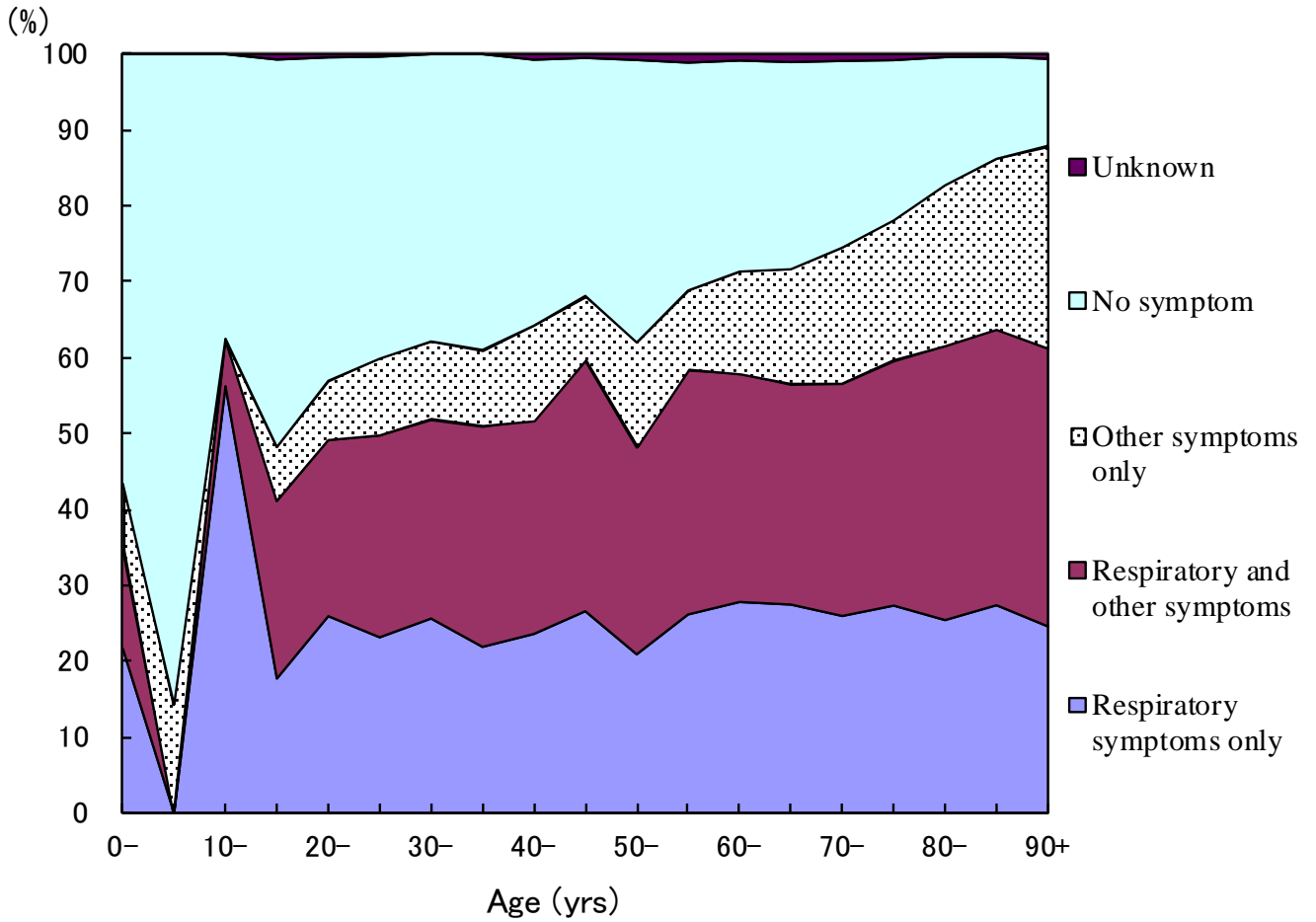


Fig.1 Proportion of symptoms among newly notified pulmonary tuberculosis patients by 5 years age group, in 2012

Respiratory symptoms include cough, sputum expectoration, bloody sputum, and hemoptysis. Other symptoms include wheezing, chest pain, back pain, dyspnea, fever, night sweating, fatigue tendency, and weight loss.

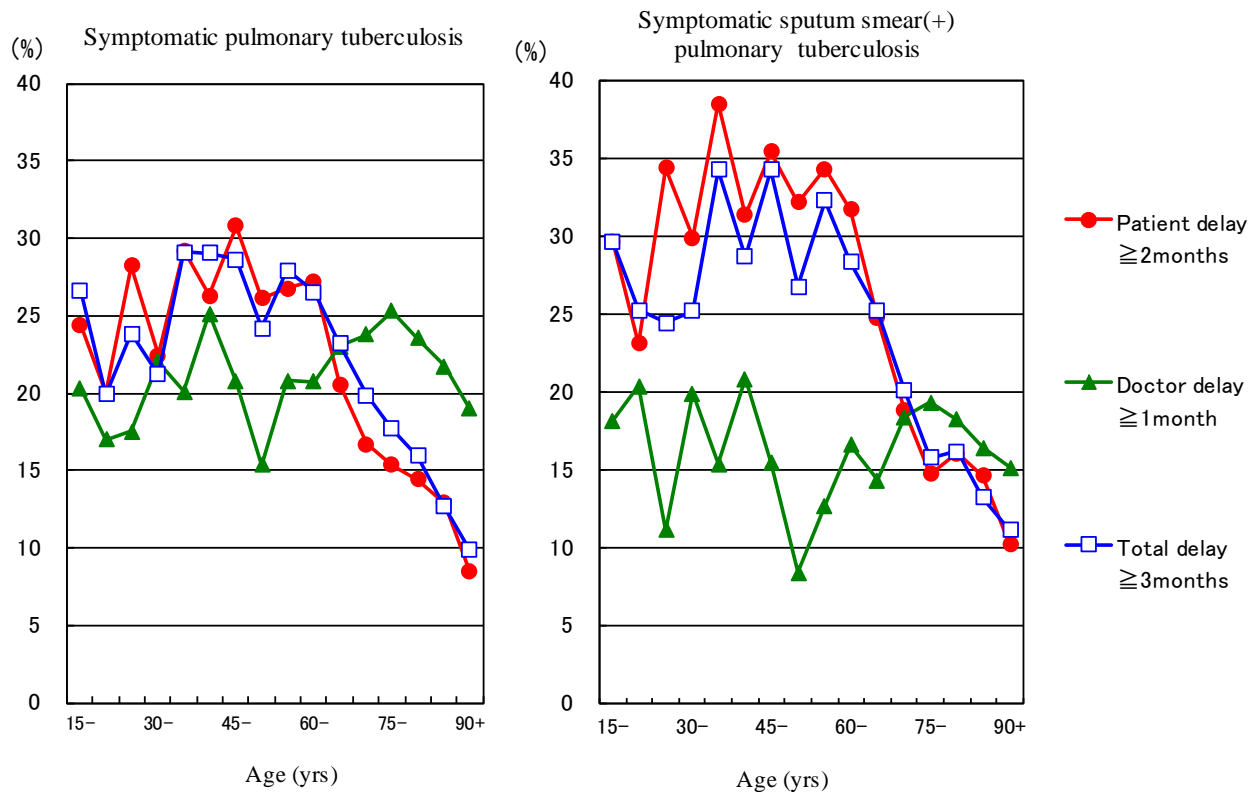


Fig.2 Proportion of patient delay, doctor delay and total delay among symptomatic pulmonary tuberculosis patients by 5-year age group, in 2012

Patient delay : The amount of time between the onset of symptoms and the initial consultation visit to a medical institution is 2 months or more.

Doctor delay : The amount of time between the initial consultation visit of the patient to a medical institution and the diagnosis of tuberculosis is 1 month or more.

Total delay : The amount of time between the onset of symptoms and the diagnosis of tuberculosis is 3 months or more.

Table 1 Proportion of mode of detection among newly notified tuberculosis patients, 1998-2012

Year	Newly notified TB patients <i>n</i>	Individual medical checkup %	Mass screening				Contact examination		Medical institutions				Others %	Unknown %
			Schools %	Residents %	Employees %	Facilities %	Family %	Others %	Outpatients with TB symptoms(*1) %	Inpatients with other diseases %	Outpatients with other diseases %			
1998	41,033	2.6	1.0	3.8	7.6	0.4	1.5	1.2	78.3	-	-	2.7	1.0	
1999	43,818	2.6	0.9	3.4	7.6	0.5	1.5	1.4	78.5	-	-	2.9	0.8	
2000	39,384	2.3	1.1	3.6	8.3	0.5	1.4	1.2	78.3	-	-	2.8	0.5	
2001	35,489	2.4	1.1	3.5	8.2	0.5	1.4	1.3	78.6	-	-	2.7	0.3	
2002	32,828	2.1	1.1	3.2	8.0	0.6	1.4	1.5	78.7	-	-	2.9	0.5	
2003	31,638	2.0	1.0	2.8	7.7	0.6	1.4	1.4	79.7	-	-	2.9	0.5	
2004	29,736	2.1	1.0	2.8	7.4	0.6	1.3	1.6	79.6	-	-	2.8	0.9	
2005	28,319	2.1	0.9	2.4	7.3	0.5	1.4	1.7	80.4	-	-	2.4	0.9	
2006	26,384	2.1	0.9	2.3	7.6	0.6	1.3	1.2	81.2	-	-	2.5	0.5	
2007	25,311	2.1	0.9	2.5	7.6	0.6	1.4	1.5	67.2	8.0	6.4	1.3	0.6	
2008	24,760	2.6	0.8	2.0	7.6	0.6	1.3	1.7	62.0	10.8	8.5	1.3	1.0	
2009	24,170	2.5	0.8	2.3	7.2	0.6	1.3	1.3	61.5	11.4	9.2	1.2	0.6	
2010	23,261	2.2	1.0	2.3	7.0	0.6	1.3	1.5	59.8	12.0	9.9	1.4	1.0	
2011	22,681	2.1	0.8	2.2	6.8	0.6	1.6	2.1	58.1	12.9	11.1	1.5	0.4	
2012	21,283	1.9	0.8	2.3	6.7	0.6	1.5	1.8	57.7	13.8	10.9	1.7	0.4	

TB: tuberculosis

TB symptoms: Respiratory symptoms such as cough, sputum expectoration, bloody sputum, and hemoptysis; and other symptoms such as wheezing, chest pain, back pain, dyspnea, fever, night sweating, fatigue tendency, and weight loss.

Previous table Proportion of mode of detection among newly notified TB patients by age group, 2012

Age groups	Newly notified TB patients	Individual medical checkup	Mass screening				Contact examination		Medical institutions			Others	Unknown
			Schools	Residents	Employees	Facilities	Family	Others	Outpatients with TB symptoms(*1)	Inpatients with other diseases	Outpatients with other diseases		
	<i>n</i>	%	%	%	%	%	%	%	%	%	%	%	%
<b>All forms of TB</b>													
Total	21,283	1.9	0.8	2.3	6.7	0.6	1.5	1.8	57.7	13.8	10.9	1.7	0.4
0-14	63	0.0	1.6	0.0	0.0	0.0	50.8	6.3	33.3	1.6	0.0	6.3	0.0
15-19	165	3.0	28.5	0.0	3.0	0.0	6.1	7.3	42.4	2.4	0.6	6.1	0.6
20-24	568	3.2	13.0	0.0	15.5	0.0	3.9	6.2	51.2	0.7	0.9	4.8	0.7
25-29	720	2.5	4.2	0.0	23.9	0.3	2.8	5.1	52.9	1.9	2.8	3.2	0.4
30-34	712	1.0	0.7	0.4	24.3	0.3	2.8	3.7	60.7	1.7	2.8	1.4	0.3
35-39	816	1.8	0.2	0.5	24.8	0.6	2.5	4.2	57.5	1.7	4.2	1.7	0.4
40-44	850	3.8	0.1	3.2	19.2	0.5	2.1	4.7	56.8	2.8	4.8	1.3	0.7
45-49	750	3.3	0.1	2.4	20.4	0.4	1.5	2.3	56.0	4.8	6.5	1.9	0.4
50-54	789	3.4	0.0	2.5	19.5	1.3	2.9	3.5	53.5	4.6	7.4	1.4	0.0
55-59	1,006	3.2	0.0	1.9	13.9	1.0	1.7	2.9	55.6	8.4	8.0	2.5	1.0
60-64	1,537	2.8	0.1	3.9	7.2	0.5	1.7	1.8	56.0	10.0	13.9	2.0	0.2
65-69	1,475	2.2	0.0	4.6	3.0	0.3	1.8	0.9	56.0	12.6	15.5	2.6	0.5
70-74	1,984	2.5	0.0	4.0	0.6	0.3	0.8	1.0	57.7	15.8	15.4	1.7	0.2
75-79	2,611	1.5	0.0	3.6	0.2	0.5	0.7	0.6	58.1	18.1	15.5	0.9	0.3
80-84	3,100	1.0	0.0	2.0	0.0	0.4	0.6	0.6	58.2	20.8	14.7	1.2	0.4
85-89	2,653	0.9	0.0	1.2	0.1	0.8	0.5	0.3	61.2	22.2	11.3	1.1	0.5
90+	1,484	0.7	0.0	0.7	0.0	1.5	0.2	0.5	64.8	23.7	6.5	1.1	0.5
<b>(Re-count) Sputum smear positive pulmonary TB</b>													
Total	8,237	1.2	0.3	1.7	3.9	0.4	0.5	0.6	65.4	14.7	9.6	1.4	0.3
0-14	5	0.0	0.0	0.0	0.0	0.0	0.0	0.0	80.0	0.0	0.0	20.0	0.0
15-19	40	7.5	15.0	0.0	2.5	0.0	2.5	7.5	62.5	0.0	0.0	2.5	0.0
20-24	144	2.1	7.6	0.0	13.9	0.0	0.7	0.7	69.4	0.0	0.7	4.9	0.0
25-29	193	1.6	1.6	0.0	14.5	0.0	0.5	1.0	75.1	1.0	1.6	2.6	0.5
30-34	212	1.4	0.5	0.0	17.0	0.5	1.9	0.5	75.0	0.5	1.9	0.9	0.0
35-39	236	1.3	0.0	0.4	18.6	0.4	0.0	1.3	72.0	0.0	5.1	0.8	0.0
40-44	273	4.4	0.0	3.7	10.3	0.4	1.8	1.1	70.7	2.9	2.2	1.5	1.1
45-49	282	2.5	0.0	1.4	16.7	1.1	0.4	0.7	66.7	3.9	5.3	1.1	0.4
50-54	283	1.1	0.0	1.1	14.1	1.8	1.4	1.1	67.1	4.2	6.4	1.8	0.0
55-59	397	2.0	0.0	1.3	9.1	0.3	0.5	1.8	69.5	7.6	5.3	2.0	0.8
60-64	592	1.2	0.2	2.7	4.7	0.0	0.5	0.5	67.9	9.8	10.3	1.9	0.3
65-69	569	1.1	0.0	2.6	1.4	0.0	1.4	1.1	63.8	12.8	13.4	2.5	0.0
70-74	757	1.1	0.0	3.0	0.8	0.1	0.3	0.5	67.1	13.3	12.0	1.6	0.1
75-79	1,044	1.1	0.0	2.6	0.2	0.3	0.2	0.4	60.3	20.4	13.3	1.0	0.3
80-84	1,315	0.9	0.0	1.7	0.0	0.4	0.5	0.2	59.5	21.8	13.9	1.0	0.1
85-89	1,217	0.6	0.0	0.9	0.1	0.5	0.2	0.2	65.2	20.9	9.9	1.0	0.5
90+	678	0.6	0.0	0.3	0.0	1.2	0.0	0.3	67.1	23.9	5.5	1.0	0.1

TB: tuberculosis

TB symptoms: Respiratory symptoms such as cough, sputum expectoration, bloody sputum, and hemoptysis; and other symptoms such as wheezing, chest pain, back pain, dyspnea, fever, night sweating, fatigue tendency, and weight loss.

Previous table Number of newly notified TB patients by occupation, sex and age group, 2012

Sex/Age group	Total	Service workers	Nurses/ Public health nurses	Medical doctors	Other medical workers	Teacher s/Nursery nurses	Pupils/Students	Other regular workers	Other temporary/daily workers	Other self-employed	Housekeepers	Infants/Little children	Jobless/ Others	Unknown
Male	12,988	343	16	56	77	37	252	2,283	487	785	15	19	8,342	276
0-14	34	-	-	-	-	-	14	-	-	-	-	19	1	-
15-19	93	-	-	-	-	-	68	11	4	-	-	-	9	1
20-24	292	23	2	-	7	-	117	104	13	3	-	-	18	5
25-29	382	42	4	6	15	1	40	179	30	11	-	-	41	13
30-39	833	83	6	8	22	11	9	459	45	51	-	-	122	17
40-49	1,011	53	2	3	14	8	2	515	78	92	-	-	219	25
50-59	1,294	56	1	20	12	5	1	549	101	126	1	-	393	29
60-69	2,124	55	-	4	6	12	1	380	140	234	1	-	1,210	81
70-79	2,931	28	1	3	1	-	-	75	71	186	5	-	2,515	46
80+	3,994	3	-	12	-	-	-	11	5	82	8	-	3,814	59
Female	8,295	226	278	6	203	37	182	685	260	143	497	13	5,607	158
0-14	29	-	-	-	-	-	16	-	-	-	-	13	-	-
15-19	72	1	-	-	-	-	59	7	2	-	-	-	3	-
20-24	276	25	15	-	12	4	69	78	20	1	10	-	35	7
25-29	338	35	34	-	20	7	29	110	20	4	29	-	40	10
30-39	695	59	99	3	46	6	8	172	56	12	87	-	116	31
40-49	589	37	67	1	57	6	1	142	59	18	63	-	117	21
50-59	501	24	48	-	41	10	-	101	44	21	58	-	138	16
60-69	888	29	12	1	23	2	-	65	41	41	125	-	525	24
70-79	1,664	14	3	1	3	2	-	10	15	33	82	-	1,480	21
80+	3,243	2	-	-	1	-	-	-	3	13	43	-	3,153	28

Previous table Proportion of mode of detection among newly notified pulmonary TB patients aged 20-59 years by occupation, 2012

	Pulmonary TB patients	Individual medical checkup	Mass screening			Contact examination		Clinics/Hospitals			Others/Unknown
			Residents	Employees	Schools/Facilities	Family	Others	Outpatients with TB symptoms	Inpatients with other diseases	Outpatients with other diseases	
			n	%	%	%	%	%	%	%	
Total	5,085	3.2	1.7	23.8	2.8	2.9	4.5	50.6	3.1	4.5	2.9
Service workers	351	1.1	1.4	22.5	0.0	1.7	4.3	59.8	4.0	3.4	1.7
Medical workers(*1)	459	3.1	0.4	39.0	0.4	1.7	15.5	33.1	0.7	3.5	2.6
Teachers/ Nursery nurses	51	5.9	0.0	31.4	0.0	3.9	5.9	52.9	0.0	0.0	0.0
Students	240	4.2	0.0	0.8	44.2	0.8	2.9	35.0	0.4	0.8	10.8
Other regular workers	1,994	2.4	1.0	39.7	0.3	2.8	3.1	44.0	1.6	3.9	1.4
Other temporary/ daily workers	379	2.6	4.2	17.7	0.0	4.5	2.9	59.9	0.8	3.7	3.7
Other self-employed	290	5.2	6.2	7.9	0.0	3.8	1.7	65.5	2.1	5.2	2.4
Housekeepers	193	6.2	4.7	3.1	0.0	4.7	1.0	68.4	2.6	5.7	3.6
Jobless/ Others	940	4.7	1.6	2.3	2.8	3.6	4.4	58.7	9.9	8.1	3.9
Unknown	188	2.1	1.6	12.2	2.1	1.6	5.3	65.4	1.1	2.1	6.4

\*1 Medical workers include nurses, public health nurses, medical doctors and dentists, physical therapists, occupational therapists, medical technologists, radiographers, and co-medicals.

\*2 TB symptoms: Respiratory symptoms such as cough, sputum expectoration, bloody sputum, and hemoptysis; and other symptoms such as wheezing, chest pain, back pain, dyspnea, fever, night sweating, fatigue tendency, and weight loss.

【Tuberculosis Characteristics upon Diagnosis(1)】

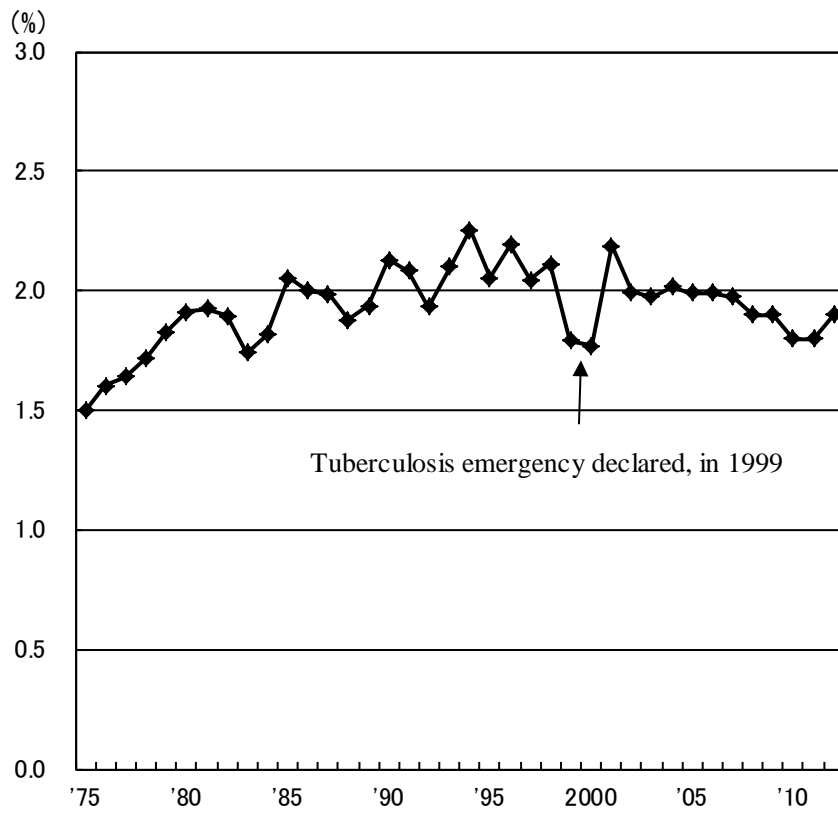
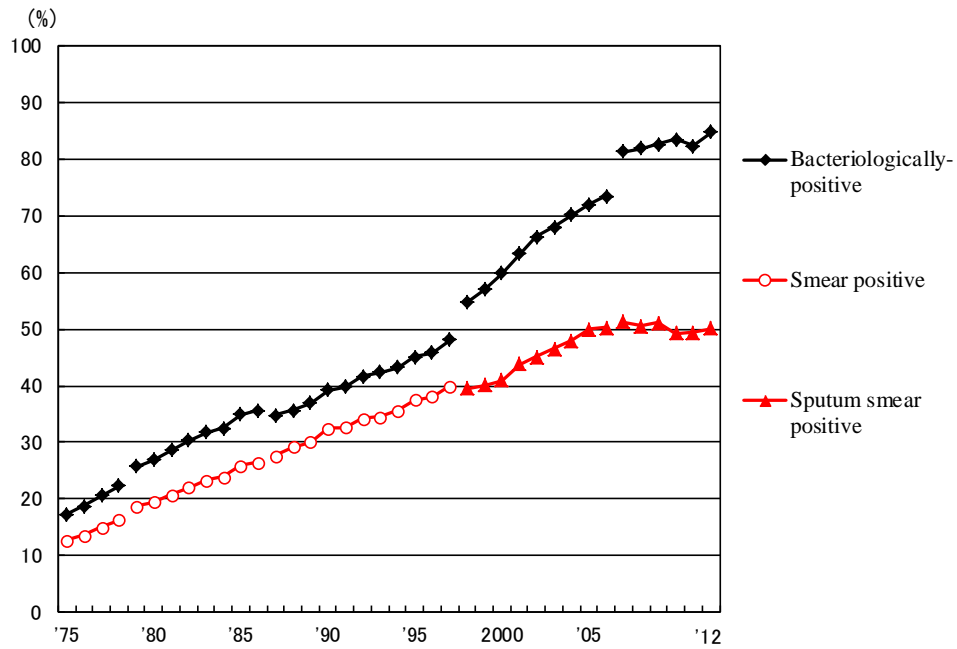
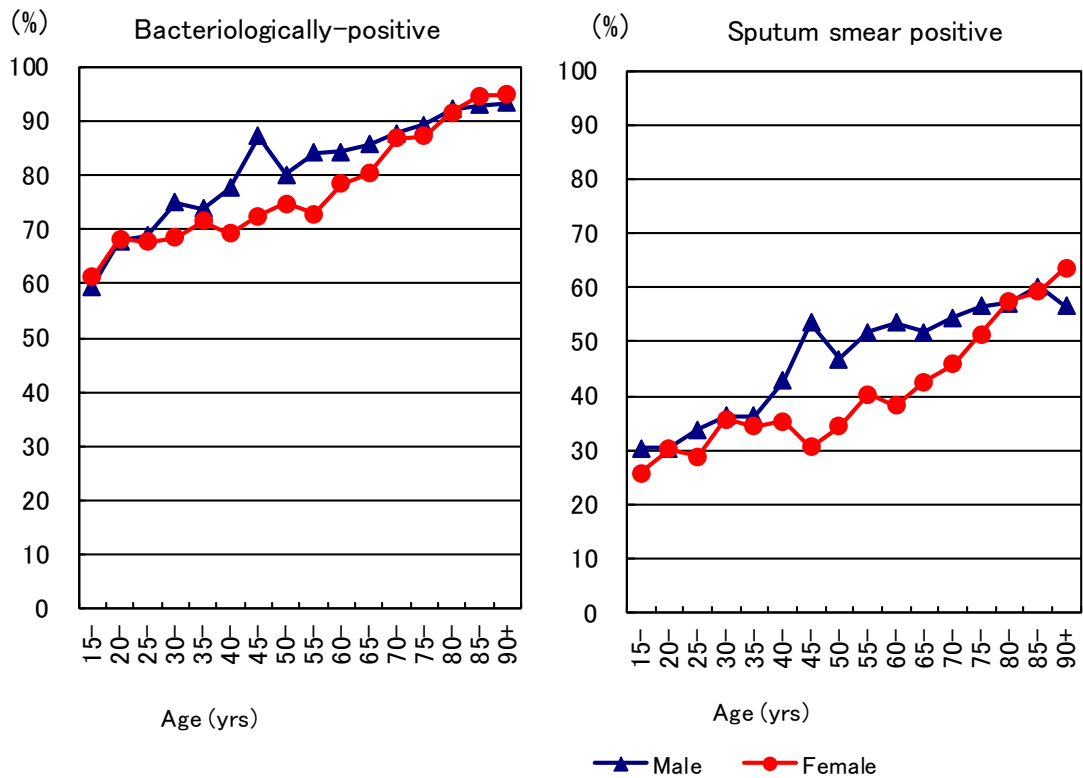


Fig.3 Proportion of far-advanced cavitory cases among newly notified pulmonary Tuberculosis patients, 1975-2012

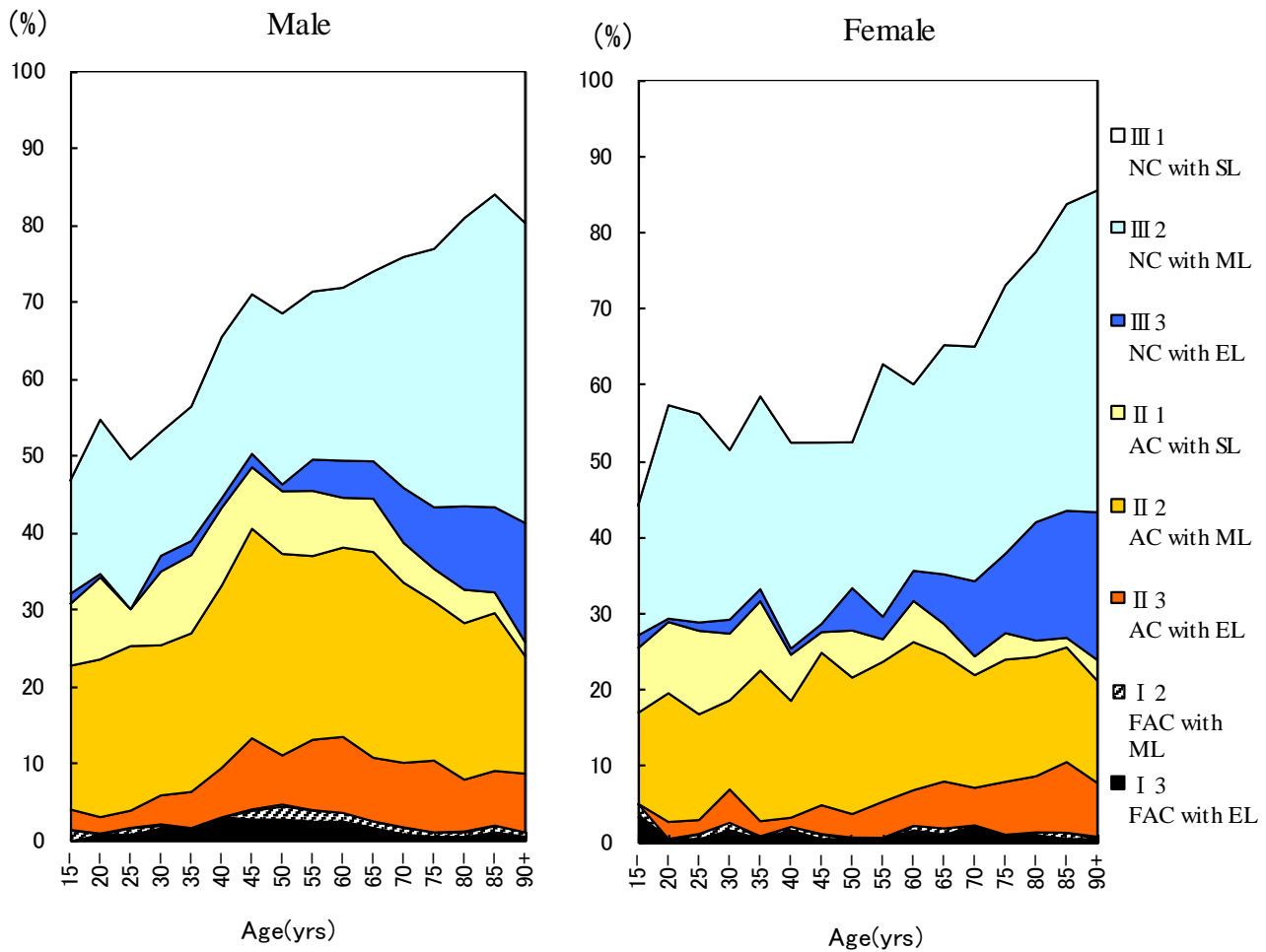


Previous Fig.  
 Proportion of bacteriologically confirmed cases among newly notified pulmonary tuberculosis patients, 1975-2012

Sources of information and subjects:  
 Annual tuberculosis reports from public health centers  
 1975-1978: All forms of tuberculosis  
 1979-1986: Pulmonary tuberculosis  
 Nationwide computerized tuberculosis surveillance system  
 1987-1997: Pulmonary Tuberculosis  
 1998-2006: Pulmonary tuberculosis (New patient criteria for notification were applied)  
 2007-2009: Pulmonary tuberculosis (Item of nucleic acid amplification was added)



Previous Fig.  
 Proportion of bacteriologically confirmed cases among newly notified pulmonary tuberculosis patients by sex and 5-year age group, 2012



Previous Fig. Proportion of cases classified by X-ray Gakkai classification by sex and 5-yearage group, 2012  
 NC : Non-cavitory SL : Slight lesion AC : Advanced cavitory ML : Moderate lesion  
 FAC: Far-advance cavitory EL : Extensive lesion

Previous table Proportion of cavitory or/and sputum smear positive cases among newly notified pulmonary TB patients aged 30-59 years, 2012

	Male						Female							
	Pulmonary TB	Cavitory or sputum smear(+)			Cavitory and sputum smear(+)			Pulmonary TB	Cavitory or sputum smear(+)			Cavitory and sputum smear(+)		
		n	%	Ratio	n	%	Ratio		n	%	Ratio	n	%	Ratio
Service workers	167	101	60.5	1.8	53	31.7	4.6	79	36	45.6	1.3	15	19.0	2.6
Medical workers	72	24	33.3	1.0	5	6.9	1.0	289	104	36.0	1.0	21	7.3	1.0
Teachers/ Nursery nurses	21	9	42.9	1.3	6	28.6	4.1	20	12	60.0	1.7	2	10.0	1.4
Other regular workers	1,269	666	52.5	1.6	337	26.6	3.8	326	131	40.2	1.1	42	12.9	1.8
Other temporary/ daily workers	195	128	65.6	2.0	91	46.7	6.7	117	59	50.4	1.4	27	23.1	3.2
Other self-employed	234	157	67.1	2.0	85	36.3	5.2	41	25	61.0	1.7	9	22.0	3.0
Jobless	592	367	62.0	1.9	204	34.5	5.0	261	137	52.5	1.5	55	21.1	2.9
Others	99	52	52.5	1.6	23	23.2	3.3	216	110	50.9	1.4	54	25.0	3.4
<b>Total</b>	<b>2,649</b>	<b>1,504</b>	<b>56.8</b>		<b>804</b>	<b>30.4</b>		<b>1,349</b>	<b>614</b>	<b>45.5</b>		<b>225</b>	<b>16.7</b>	

Others:Houskeepers/ Students/ Unknown

Ratio: The ratio of each proportion to that of medical workers



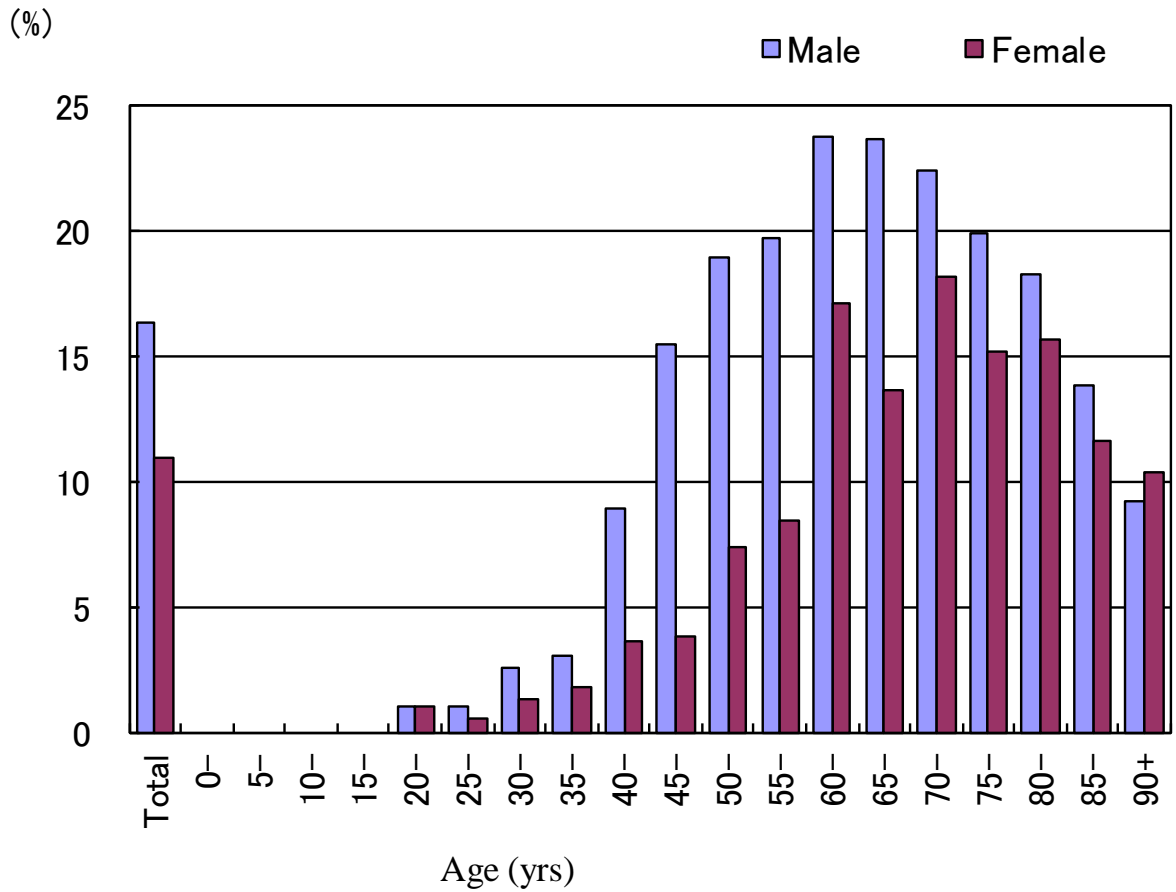


Fig.4 Proportion of newly notified tuberculosis patients with diabetes mellitus in each age-group by sex, 2012

Table 2 Number of newly notified tuberculosis patients with HIV infection, by sex and age group, 2012 and 2007–2012

Age group	Sputum smear positive		Other bacteriologically positive		Bacteriologically negative		Extra-pulmonary		Total	
	M	F	M	F	M	F	M	F	M	F
2012 Calendar year										
Total	22 (1)	4 (1)	6 (1)	1 (1)	4 (2)	1 (1)	19	5 (2)	51 (4)	11 (5)
0-19	0	0	0	0	0	0	1	0	1	0
20-24	1 (1)	0	1	0	0	0	0	0	2 (1)	0
25-29	1	0	0	0	1 (1)	0	1	0	3 (1)	0
30-34	1	0	0	1 (1)	0	0	2	1	3	2 (1)
35-39	0	0	0	0	1	0 1	3	0	4	0
40-44	4	0	1 (1)	0	0	1	4	1 (1)	9 (1)	2 (2)
45-49	1	1 (1)	0	0	1 1	0	4	0	6 (1)	1 (1)
50-54	2	0	0	0	0	0	1	0	3	0
55-59	1	0	1	0	0	0	1	1 1	3	1 (1)
60-64	4	0	1	0	0	0	1	0	6	0
65-69	4	0	1	0	1	0	1	1	7	1
70-74	1	1	0	0	0	0	0	0	1	1
75-79	0	0	0	0	0	0	0	1	0	1
80+	2	2	1	0	0	0	0	0	3	2
2007-2012 Calendar year										
Total	108 (10)	20 (13)	55 (10)	8 (5)	31 (4)	5 (3)	120 (21)	19 (10)	314 (45)	52 (31)
0-19	1 (1)	0	0	0	0	0	2	0	3 (1)	0
20-24	3 (2)	0	1	0	1 (1)	1 (1)	1	1	6 (3)	2 (1)
25-29	6 (3)	3 (2)	1 (1)	1 (1)	1 (1)	0	8 (1)	0	16 (6)	4 (3)
30-34	9 (3)	4 (4)	5	3 (2)	1	1 (1)	13 (4)	4 (2)	28 (7)	12 (9)
35-39	16	3 (3)	14 (4)	1 (1)	5	0 (1)	20 (3)	2 (2)	55 (7)	6 (6)
40-44	21	3 (3)	10 (4)	0	6 (1)	3	28 (10)	5 (4)	65 (15)	11 (8)
45-49	11 (1)	1 (1)	4	1 (1)	3 (1)	0	23 (3)	0	41 (5)	2 (2)
50-54	9	0	8 (1)	0	3	0	6	0	26 (1)	0
55-59	5	0	2	0	4	0	7	2 (2)	18	2 (2)
60-64	9	1	5	0	3	0	4	0	21	1
65-69	9	0	2	0	2	0	3	1	16	1
70-74	2	2	1	0	1	0	1	1	5	3
75-79	2	0	0	0	1	0	3	2	6	2
80+	5	3	2	2	0	0	1	1	8	6

( ) : Re-count of foreigners

HIV : Human Immunodeficiency Virus. M : male patients, F : female patients.

Table 3 Drug susceptibility test results among newly notified pulmonary tuberculosis patients, by treatment history, 2007–2012

Treatment history, Culture examination results, Drug susceptibility test results	2007				2008				2009				2010				2011				2012				
	n	%	%	%	n	%	%	%	n	%	%	%	n	%	%	%	n	%	%	%	n	%	%	%	
<b>Total</b>																									
Pulmonary tuberculosis	19,893	100%			19,393	100%			18,912	100%			18,328	100%			17,519	100%			16,432	100%			
Culture result obtained	12,690	63.8			12,087	62.3			14,146	74.8			14,656	80.0			13,902	79.4			14,058	85.6			
Culture positive	9,983	50.2	100%		9,480	48.9	100%		10,902	57.6	100%		11,495	62.7	100%		10,915	62.3	100%		11,261	68.5	100%		
DST result obtained	4,173		41.8	100%	4,332		45.7	100%	6,920		63.5	100%	8,380		72.9	100%	8,046		73.7	100%	8,347		74.1	100%	
MDR	50			1.2	48			1.1	56			0.8	68			0.8	60			0.7	60			0.7	
Any INH resistance	258			6.2	211			4.9	346			5.0	396			4.7	386			4.8	380			4.6	
Any RFP resistance	72			1.7	64			1.5	80			1.2	95			1.1	86			1.1	73			0.9	
Any resistance*	628			15.0	550			12.7	903			13.0	1,025			12.2	998			12.4	810			9.7	
<b>New treatment</b>																									
Pulmonary tuberculosis	18,220	100%			17,515	100%			17,125	100%			16,481	100%			15,761	100%			15,040	100%			
Culture result obtained	11,602	63.7			10,845	61.9			12,801	74.8			13,164	79.9			12,454	79.0			12,882	85.7			
Culture positive	9,148	50.2	100%		8,540	48.8	100%		9,899	57.8	100%		10,374	62.9	100%		9,800	62.2	100%		10,379	69.0	100%		
DST result obtained	3,752			41.0	100%	3,885			45.5	100%	6,276			63.4	100%	7,226			73.7	100%	7,676			74.0	100%
MDR	23				0.6	28			0.7	34			0.5	38			0.5	38			0.5	38			0.5
Any INH resistance	194				5.2	163			4.2	276			4.4	311			4.1	297			4.1	310			4.0
Any RFP resistance	36				1.0	39			1.0	50			0.8	56			0.7	57			0.8	46			0.6
Any resistance*	516				13.8	470			12.1	780			12.4	876			11.6	858			11.9	712			9.3
<b>Re-treatment</b>																									
Pulmonary tuberculosis	1,409	100%			1,542	100%			1,468	100%			1,461	100%			1,351	100%			1,094	100%			
Culture result obtained	946	67.1			1,059	68.7			1,134	77.2			1,217	83.3			1,151	85.2			959	87.7			
Culture positive	713	50.6	100%		779	50.5	100%		830	56.5	100%		885	60.6	100%		863	63.9	100%		693	63.3	100%		
DST result obtained	376			52.7	100%	391			50.2	100%	559			67.3	100%	694			78.4	100%	661			76.6	100%
MDR	27				7.2	20			5.1	20			3.6	27			3.9	22			3.3	22			4.0
Any INH resistance	63				16.8	48			12.3	65			11.6	79			11.4	80			12.1	67			12.1
Any RFP resistance	36				9.6	24			6.1	28			5.0	36			5.2	28			4.2	26			4.7
Any resistance*	107				28.5	75			19.2	112			20.0	132			19.0	122			18.5	94			16.9
<b>No information about treatment history</b>																									
Pulmonary tuberculosis	264	100%			336	100%			319	100%			386	100%			407	100%			298	100%			
Culture result obtained	142	53.8			183	54.5			211	66.1			275	71.2			297	73.0			217	72.8			
Culture positive	122	46.2	100%		161	47.9	100%		173	54.2	100%		236	61.1	100%		252	61.9	100%		189	63.4	100%		
DST result obtained	45			36.9	100%	56			34.8	100%	85			49.1	100%	133			56.4	100%	159			63.1	100%
MDR	0				0.0	0			0.0	2			2.4	3			2.3	0			0.0	0			0.0
Any INH resistance	1				2.2	0			0.0	5			5.9	6			4.5	9			5.7	3			2.6
Any RFP resistance	0				0.0	1			1.8	2			2.4	3			2.3	1			0.6	1			0.9
Any resistance*	5				11.1	5			8.9	11			12.9	17			12.8	18			11.3	4			3.4

DST: Drug susceptibility test MDR : Multi-drug resistant, i.e., resistant to at least INH and RFP INH: isoniazid RFP: rifampicin

Cases having drug resistance are counted independently by drug.

Previous table Drug susceptibility test results among newly notified pulmonary tuberculosis patients, by sex and age group, 2007-2012 (Re-count of foreigners)

Age group	Total										New treatment (Re-count)									
	Male					Female					Male					Female				
	DST result obtained	MDR	Any INH resistance	Any RFP resistance	* Any resistance	DST result obtained	MDR	Any INH resistance	Any RFP resistance	* Any resistance	DST result obtained	MDR	Any INH resistance	Any RFP resistance	* Any resistance	DST result obtained	MDR	Any INH resistance	Any RFP resistance	* Any resistance
2007-2012 Calendar year																				
Total	648	25	61	29	115	767	40	102	50	170	608	17	46	21	101	714	28	85	35	145
0-19	25	4	7	4	11	21	1	2	1	2	24	3	6	3	10	20	1	1	1	1
20-29	288	16	31	20	55	337	26	57	32	93	276	11	22	15	49	320	19	48	24	82
30-39	126	4	10	4	18	200	8	26	10	40	121	3	9	3	16	184	5	23	6	35
40-49	71	1	5	1	13	118	2	10	4	22	64	0	3	0	10	108	1	9	2	19
50-59	49	0	2	0	5	39	0	3	0	4	46	0	2	0	5	35	0	1	0	1
60-69	35	0	2	0	8	21	1	2	1	3	29	0	1	0	7	21	1	2	1	3
70-79	28	0	2	0	3	15	2	2	2	3	26	0	2	0	3	11	1	1	1	1
80+	26	0	2	0	2	16	0	0	0	3	22	0	1	0	1	15	0	0	0	3
2007-2012 Calendar year																				
Total	100%	3.9	9.4	4.5	17.7	100%	5.2	13.3	6.5	22.2	100%	2.8	7.6	3.5	16.6	100%	3.9	11.9	4.9	20.3
0-19	100	16.0	28.0	16.0	44.0	100	4.8	9.5	4.8	9.5	100	12.5	25.0	12.5	41.7	100	5.0	5.0	5.0	5.0
20-29	100	5.6	10.8	6.9	19.1	100	7.7	16.9	9.5	27.6	100	4.0	8.0	5.4	17.8	100	5.9	15.0	7.5	25.6
30-39	100	3.2	7.9	3.2	14.3	100	4.0	13.0	5.0	20.0	100	2.5	7.4	2.5	13.2	100	2.7	12.5	3.3	19.0
40-49	100	1.4	7.0	1.4	18.3	100	1.7	8.5	3.4	18.6	100	0.0	4.7	0.0	15.6	100	0.9	8.3	1.9	17.6
50-59	100	0.0	4.1	0.0	10.2	100	0.0	7.7	0.0	10.3	100	0.0	4.3	0.0	10.9	100	0.0	2.9	0.0	2.9
60-69	100	0.0	5.7	0.0	22.9	100	4.8	9.5	4.8	14.3	100	0.0	3.4	0.0	24.1	100	4.8	9.5	4.8	14.3
70-79	100	0.0	7.1	0.0	10.7	100	13.3	13.3	13.3	20.0	100	0.0	7.7	0.0	11.5	100	9.1	9.1	9.1	9.1
80+	100	0.0	7.7	0.0	7.7	100	0.0	0.0	0.0	18.8	100	0.0	4.5	0.0	4.5	100	0.0	0.0	0.0	20.0

DST: Drug susceptibility test. MDR: Multi-drug resistance, i.e., resistant to at least INH and RFP.

INH: Isoniazid. RFP: Rifampicin.