

【Case Finding】

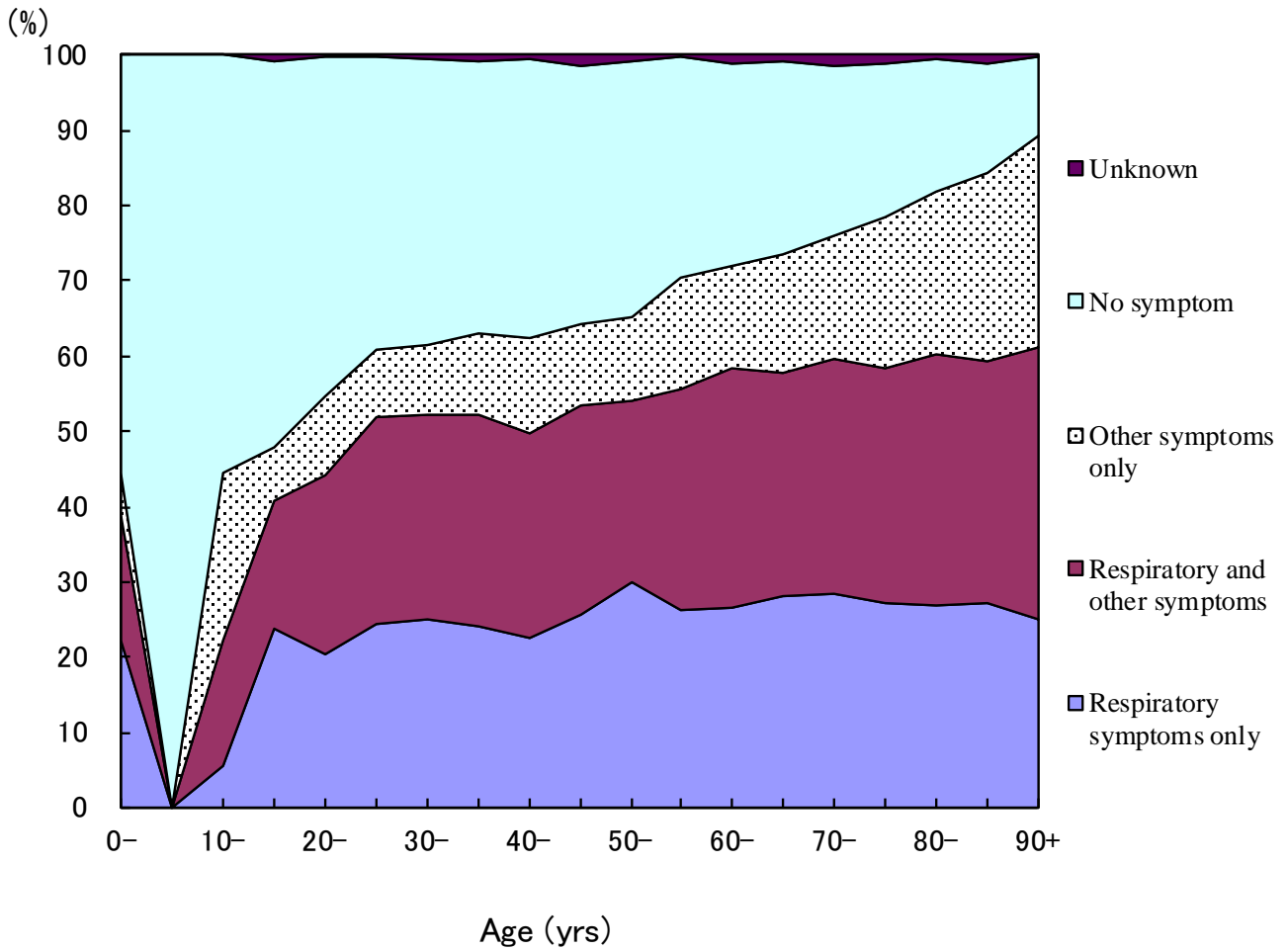


Fig.1 Proportion of symptoms among newly notified pulmonary tuberculosis patients by 5-years age group, in 2013

Respiratory symptoms include cough, sputum expectoration, bloody sputum, and hemoptysis. Other symptoms include wheezing, chest pain, back pain, dyspnea, fever, night sweating, fatigue tendency, and weight loss.

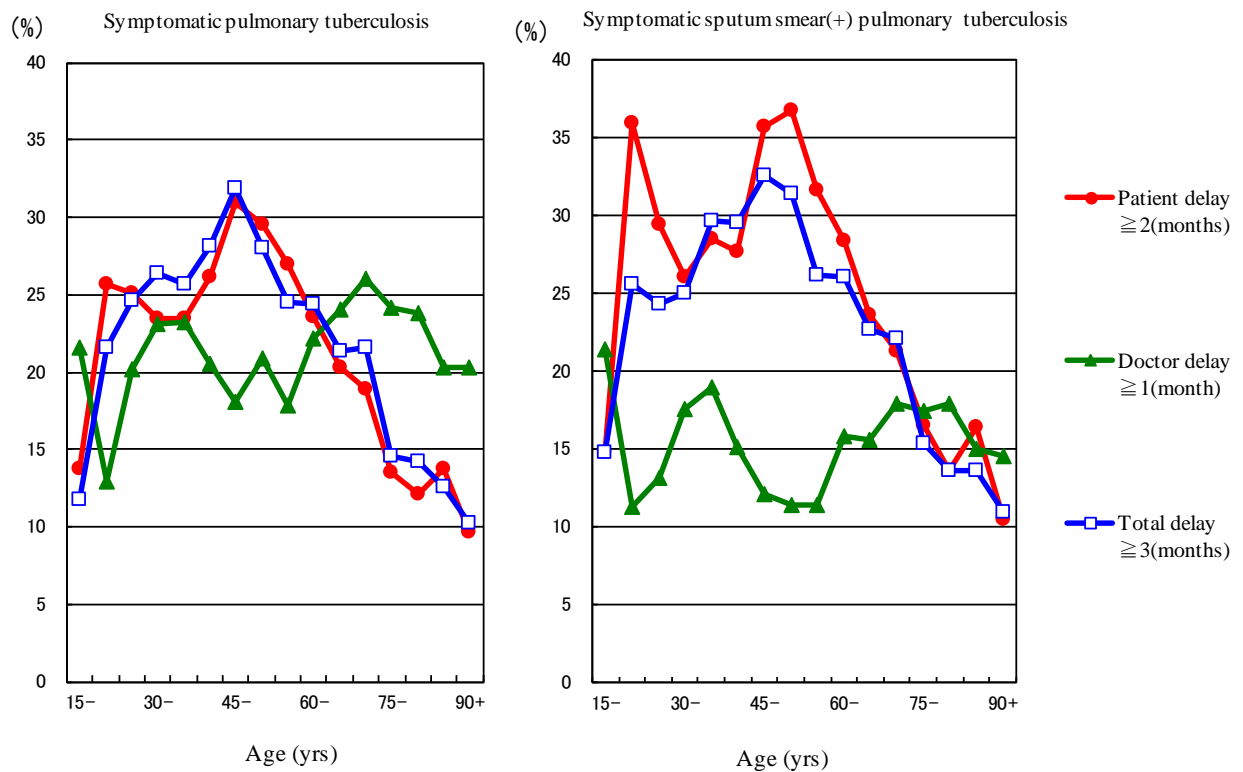


Fig.2 Proportion of patient delay, doctor delay and total delay among symptomatic pulmonary tuberculosis patients by 5-year age group, in 2013

Patient delay : The amount of time between the onset of symptoms and the initial consultation visit to a medical institution is 2 months or more.

Doctor delay : The amount of time between the initial consultation visit of the patient to a medical institution and the diagnosis of tuberculosis is 1 month or more.

Total delay : The amount of time between the onset of symptoms and the diagnosis of tuberculosis is 3 months or more.

Table1 Proportion of mode of detection among newly notified tuberculosis patients, 1998-2013

Year	Newly notified TB patients <i>n</i>	Individual medical checkup %	Mass screening				Contact examination		Medical institutions			Others %	Unknown %
			Schools %	Residents %	Employees %	Facilities %	Family %	Others %	Outpatients with TB symptoms(*1) %	Inpatients with other diseases %	Outpatients with other diseases %		
1998	41,033	2.6	1.0	3.8	7.6	0.4	1.5	1.2	78.3	-	-	2.7	1.0
1999	43,818	2.6	0.9	3.4	7.6	0.5	1.5	1.4	78.5	-	-	2.9	0.8
2000	39,384	2.3	1.1	3.6	8.3	0.5	1.4	1.2	78.3	-	-	2.8	0.5
2001	35,489	2.4	1.1	3.5	8.2	0.5	1.4	1.3	78.6	-	-	2.7	0.3
2002	32,828	2.1	1.1	3.2	8.0	0.6	1.4	1.5	78.7	-	-	2.9	0.5
2003	31,638	2.0	1.0	2.8	7.7	0.6	1.4	1.4	79.7	-	-	2.9	0.5
2004	29,736	2.1	1.0	2.8	7.4	0.6	1.3	1.6	79.6	-	-	2.8	0.9
2005	28,319	2.1	0.9	2.4	7.3	0.5	1.4	1.7	80.4	-	-	2.4	0.9
2006	26,384	2.1	0.9	2.3	7.6	0.6	1.3	1.2	81.2	-	-	2.5	0.5
2007	25,311	2.1	0.9	2.5	7.6	0.6	1.4	1.5	67.2	8.0	6.4	1.3	0.6
2008	24,760	2.6	0.8	2.0	7.6	0.6	1.3	1.7	62.0	10.8	8.5	1.3	1.0
2009	24,170	2.5	0.8	2.3	7.2	0.6	1.3	1.3	61.5	11.4	9.2	1.2	0.6
2010	23,261	2.2	1.0	2.3	7.0	0.6	1.3	1.5	59.8	12.0	9.9	1.4	1.0
2011	22,681	2.1	0.8	2.2	6.8	0.6	1.6	2.1	58.1	12.9	11.1	1.5	0.4
2012	21,283	1.9	0.8	2.3	6.7	0.6	1.5	1.8	57.7	13.8	10.9	1.7	0.4
2013	20,495	2.0	0.8	2.2	6.1	0.4	1.5	1.6	58.4	13.4	11.3	1.6	0.5

TB: tuberculosis

TB symptoms: Respiratory symptoms such as cough, sputum expectoration, bloody sputum, and hemoptysis; and other symptoms such as wheezing, chest pain, back pain, dyspnea, fever, night sweating, fatigue tendency, and weight loss.

Previous table Proportion of mode of detection among newly notified TB patients by age group, 2013

Age groups	Newly notified TB patients <i>n</i>	Individual medical checkups <i>n</i> %	Mass screening				Contact examination		Medical institutions			Others %	Unknown %
			Schools	Residents	Employees	Facilities	Family	Others	Outpatients with TB symptoms (*1)	Inpatients with other diseases	Outpatients with other diseases		
			%	%	%	%	%	%	%	%	%		
<b>All forms of TB</b>													
Total	20,495	2.0	0.8	2.2	6.1	0.4	1.5	1.6	58.4	13.4	11.3	1.6	0.5
0-14	66	0.0	6.1	0.0	0.0	0.0	50.0	3.0	30.3	3.0	1.5	6.1	0.0
15-19	165	2.4	23.6	0.0	4.2	0.0	13.3	4.8	41.8	3.6	1.2	4.2	0.6
20-24	536	2.2	14.7	0.0	17.5	0.2	2.4	4.7	51.5	0.7	0.7	4.7	0.6
25-29	660	1.8	6.1	0.6	24.2	0.2	3.3	4.8	54.2	0.6	1.5	1.5	1.1
30-34	641	2.3	0.9	0.6	23.1	0.0	3.9	3.9	57.9	2.3	2.2	1.7	1.1
35-39	676	4.9	0.4	0.6	21.3	0.1	2.4	3.6	59.6	1.8	2.4	2.2	0.7
40-44	791	4.4	0.0	1.6	21.5	0.9	2.3	3.9	52.7	4.0	5.8	2.0	0.8
45-49	705	2.8	0.0	2.1	18.7	0.6	3.0	3.7	55.2	4.4	6.0	2.4	1.1
50-54	779	3.7	0.1	2.3	18.4	0.4	2.3	2.7	55.8	5.5	6.0	2.6	0.1
55-59	886	2.0	0.0	2.7	11.3	0.1	2.9	2.6	59.5	6.3	9.0	2.9	0.6
60-64	1,363	2.6	0.0	3.4	6.2	0.3	1.7	2.6	58.1	10.9	11.5	2.1	0.5
65-69	1,470	2.6	0.0	4.1	2.2	0.3	1.2	1.2	57.0	12.5	16.6	1.7	0.4
70-74	1,852	1.9	0.0	3.7	1.1	0.3	1.0	0.9	58.2	13.6	17.3	1.3	0.6
75-79	2,507	1.8	0.0	3.0	0.3	0.4	0.6	0.5	57.1	16.8	17.9	1.0	0.6
80-84	3,082	1.2	0.0	2.3	0.0	0.4	0.4	0.5	61.6	18.9	13.2	1.2	0.3
85-89	2,774	1.2	0.0	1.5	0.0	0.6	0.3	0.3	61.2	21.5	11.9	1.1	0.3
90+	1,542	0.8	0.0	0.7	0.0	1.0	0.2	0.7	63.5	23.1	8.7	0.9	0.4
<b>(Re-count) Sputum smear positive pulmonary TB</b>													
Total	8,119	1.5	0.3	1.7	3.6	0.4	0.6	0.5	65.9	14.1	10.1	1.0	0.5
0-14	0	-	-	-	-	-	-	-	-	-	-	-	-
15-19	49	4.1	12.2	0.0	2.0	0.0	2.0	2.0	73.5	2.0	2.0	0.0	0.0
20-24	137	0.7	9.5	0.0	10.2	0.0	0.7	1.5	73.0	0.7	0.0	2.9	0.7
25-29	220	1.8	1.8	0.9	16.8	0.5	1.4	0.5	72.3	0.0	2.3	0.9	0.9
30-34	195	3.1	0.5	0.0	10.8	0.0	2.6	0.5	74.9	2.1	2.6	0.5	2.6
35-39	217	1.4	0.0	0.0	15.7	0.0	0.9	0.5	76.0	0.0	2.3	1.8	1.4
40-44	264	4.2	0.0	1.9	15.5	0.4	0.8	1.5	63.6	3.8	6.1	1.1	1.1
45-49	259	2.3	0.0	0.8	15.1	0.8	0.8	0.0	71.0	5.0	2.7	0.8	0.8
50-54	305	2.3	0.0	1.0	13.8	0.3	0.7	1.0	68.2	5.9	4.3	2.6	0.0
55-59	358	1.1	0.0	2.5	6.4	0.0	1.1	0.6	68.4	5.0	10.9	3.6	0.3
60-64	579	1.6	0.0	2.2	4.7	0.2	0.9	1.2	66.8	13.0	7.6	1.4	0.5
65-69	540	1.7	0.0	2.6	1.1	0.0	0.7	0.0	66.5	12.2	13.5	1.3	0.4
70-74	711	1.4	0.0	2.7	0.6	0.3	0.7	0.6	64.0	13.4	15.0	0.7	0.7
75-79	971	1.1	0.0	2.1	0.1	0.4	0.2	0.2	62.3	17.2	15.4	0.6	0.3
80-84	1,318	1.0	0.0	2.0	0.0	0.3	0.4	0.2	64.4	18.9	11.7	0.6	0.5
85-89	1,292	1.3	0.0	1.3	0.0	0.8	0.2	0.5	63.8	20.9	10.5	0.6	0.1
90+	704	0.9	0.0	0.9	0.0	0.9	0.0	0.4	65.2	22.6	8.7	0.6	0.0

TB: tuberculosis

\*1 TB symptoms: Respiratory symptoms such as cough, sputum expectoration, bloody sputum, and hemoptysis; and other symptoms such as wheezing, chest pain, back pain, dyspnea, fever, night sweating, fatigue tendency, and weight loss.

Previous table Number of newly notified TB patients by occupation, sex and age group, 2013

Sex/Age group	Total	Service workers	Nurses/ Public health nurses	Medical doctors	Other medical workers	Teacher s/Nursery nurses	Pupils/Students	Other regular workers	Other temporary/daily workers	Other self-employed	Housekeepers	Infants/Little children	Jobless/Others	Unknown
Male	12,504	298	10	53	98	46	288	2,083	428	721	7	13	8,123	336
0-14	31	-	-	-	-	-	17	-	-	-	-	13	1	-
15-19	85	-	-	-	1	-	60	10	1	1	-	-	9	3
20-24	303	14	1	-	5	4	140	94	19	4	-	-	20	2
25-29	329	24	-	6	14	3	60	153	22	7	-	-	27	13
30-39	711	73	6	8	25	9	8	393	38	44	-	-	87	20
40-49	929	48	2	9	19	9	1	474	55	83	-	-	199	30
50-59	1,150	58	1	10	18	13	1	483	85	107	1	-	326	47
60-69	2,007	56	-	7	13	3	-	372	132	218	1	-	1,131	74
70-79	2,811	24	-	8	1	4	1	87	73	170	2	-	2,359	82
80+	4,148	1	-	5	2	1	-	17	3	87	3	-	3,964	65
Female	7,991	248	224	13	183	49	192	599	255	154	450	18	5,447	159
0-14	35	-	-	-	-	-	17	-	-	-	-	18	-	-
15-19	80	4	-	-	1	-	58	4	2	-	-	-	9	2
20-24	233	20	12	-	5	5	83	52	19	2	6	-	22	7
25-29	331	39	28	4	25	5	23	96	20	4	27	-	46	14
30-39	606	52	53	4	42	13	11	152	53	13	93	-	104	16
40-49	567	39	74	3	40	10	-	135	53	19	66	-	110	18
50-59	515	41	46	1	51	12	-	87	44	20	41	-	160	12
60-69	826	34	8	-	16	4	-	57	47	39	98	-	493	30
70-79	1,548	17	2	-	1	-	-	14	14	34	83	-	1,355	28
80+	3,250	2	1	1	2	-	-	2	3	23	36	-	3,148	32

Previous table Proportion of mode of detection among newly notified pulmonary TB patients aged 20-59 years by occupation, 2013

	Pulmonary TB patients	Individual medical checkup	Residents	Employees	Schools/Facilities	Family	Others	Outpatients with TB symptoms(*2)	Inpatients with other diseases	Outpatients with other diseases	Others/Unknown
	n	%	%	%	%	%	%	%	%	%	%
Total	4,493	3.5	1.6	23.1	3.0	3.2	4.3	51.1	3.0	3.9	3.3
Service workers	324	2.2	1.5	19.8	0.3	4.0	1.9	60.8	1.9	5.6	2.2
Medical workers(*1)	438	2.3	0.5	41.3	0.5	2.1	13.5	34.0	0.7	2.5	2.7
Teachers/ Nursery nurses	64	6.3	3.1	21.9	3.1	9.4	6.3	40.6	0.0	4.7	4.7
Students	256	2.7	1.2	2.3	42.2	1.6	6.3	32.8	0.4	0.4	10.2
Other regular workers	1,734	2.5	0.7	38.2	0.2	3.0	3.7	45.6	2.0	2.7	1.4
Other temporary/ daily workers	314	3.5	1.3	16.6	0.6	2.9	6.4	60.2	3.2	2.9	2.5
Other self-employed	248	4.8	2.4	8.1	0.0	4.0	0.8	68.1	4.4	5.2	2.0
Housekeepers	176	6.8	4.0	3.4	0.0	3.4	0.6	68.2	2.3	7.4	4.0
Jobless/ Others	818	6.0	3.8	2.8	1.6	3.9	2.1	60.9	7.7	6.6	4.6
Unknown	121	0.8	0.8	5.8	0.8	4.1	2.5	58.7	3.3	6.6	16.5

\*1 Medical workers include nurses, public health nurses, medical doctors and dentists, physical therapists, occupational therapists, medical technologists, radiographers, and co-medicals.

\*2 TB symptoms: Respiratory symptoms such as cough, sputum expectoration, bloody sputum, and hemoptysis; and other symptoms such as wheezing, chest pain, back pain, dyspnea, fever, night sweating, fatigue tendency, and weight loss.

【Tuberculosis Characteristics upon Diagnosis(1)】

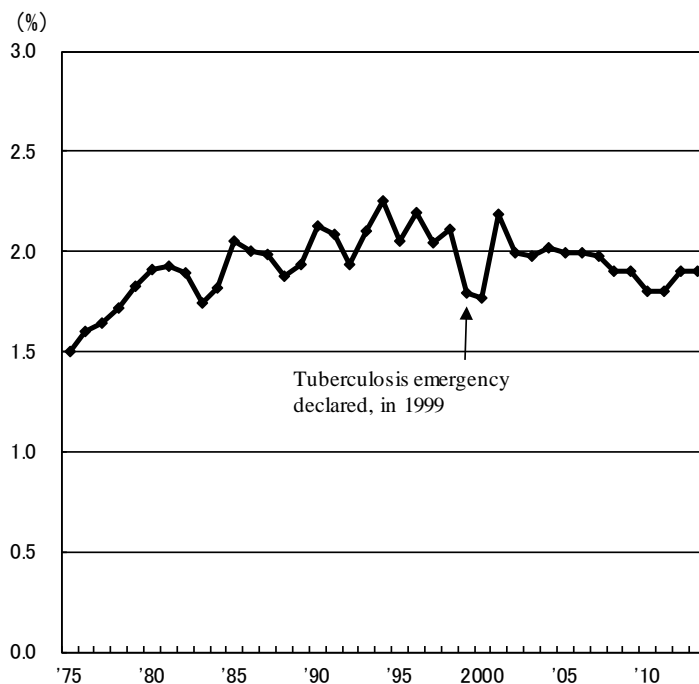
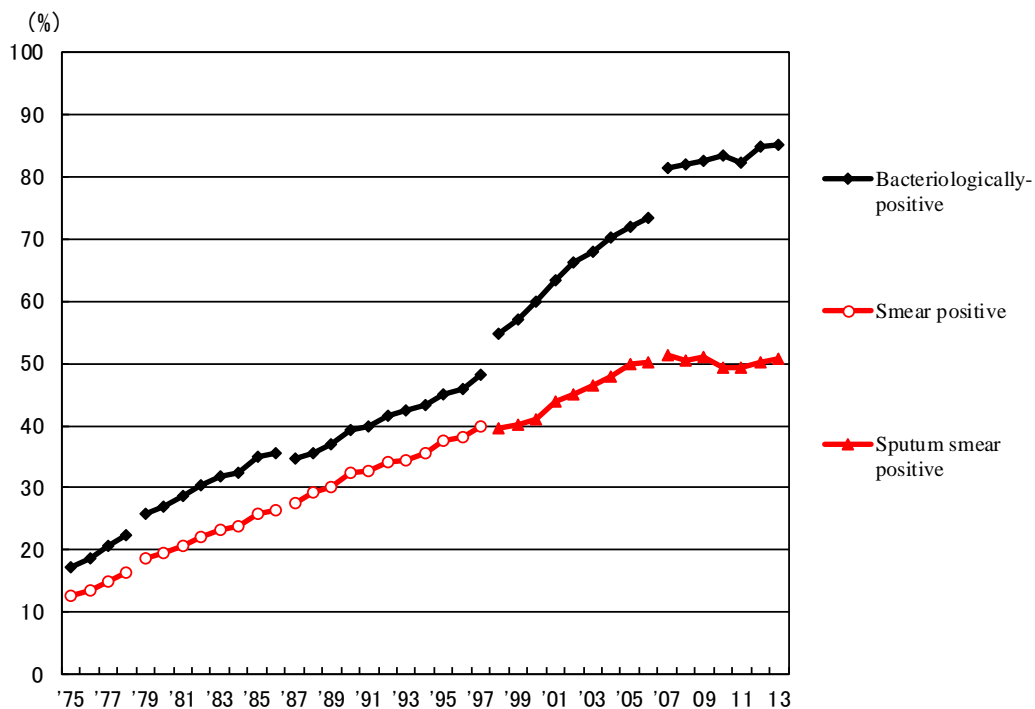


Fig.3 Proportion of far-advanced cavitary cases among newly notified pulmonary Tuberculosis patients, 1975-2013



Previous Fig.  
Proportion of bacteriologically confirmed cases among newly notified pulmonary tuberculosis patients, 1975-2013

Sources of information and subjects:

Annual tuberculosis reports from public health centers

1975-1978: All forms of tuberculosis

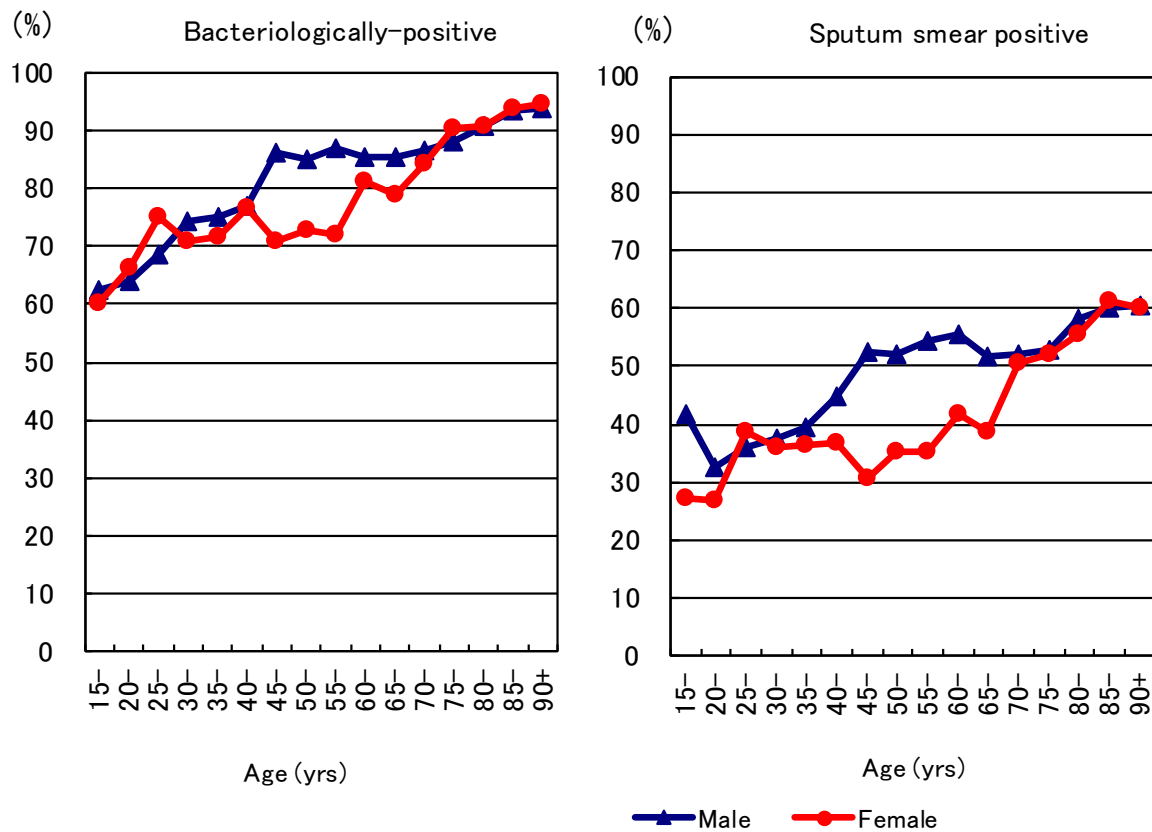
1979-1986: Pulmonary tuberculosis

Nationwide computerized tuberculosis surveillance system

1987-1997: Pulmonary Tuberculosis

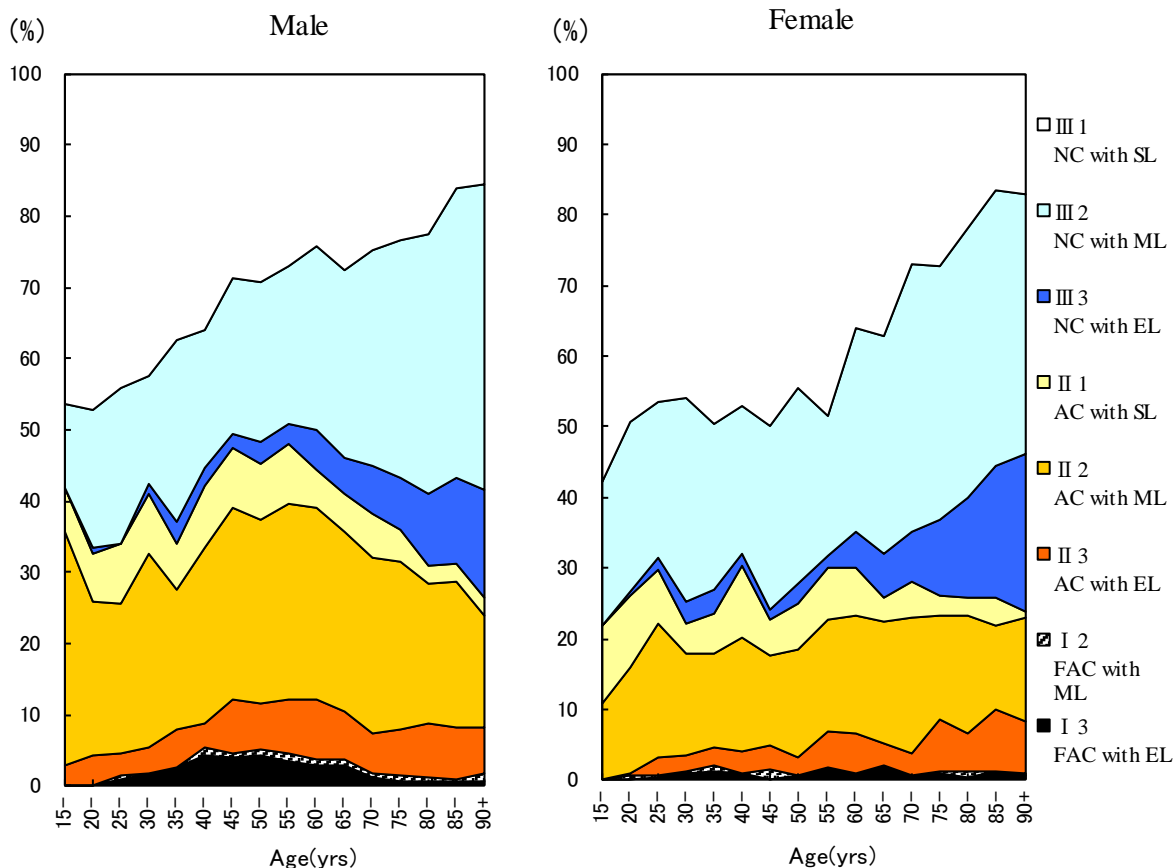
1998-2006: Pulmonary tuberculosis (New patient criteria for notification were applied)

2007-2009: Pulmonary tuberculosis (Item of nucleic acid amplification was added)



Previous Fig.

Proportion of bacteriologically confirmed cases among newly notified pulmonary tuberculosis patients by sex and 5-year age group, 2013



Previous Fig. Proportion of cases classified by X-ray Gakkai classification by sex and 5-yearage group, 2013  
 NC : Non-cavitory SL : Slight lesion AC : Advanced cavitory ML : Moderate lesion  
 FAC: Far-advance cavitory EL : Extensive lesion

Previous table Proportion of cavitory or/and sputum smear positive cases among newly notified pulmonary TB patients aged 30-59 years, 2013

	Male								Female							
	Pulmonary TB	Cavitory or sputum smear(+)			Cavitory and sputum smear(+)			Pulmonary TB	Cavitory or sputum smear(+)			Cavitory and sputum smear(+)				
		n	%	Ratio	n	%	Ratio		n	%	Ratio	n	%	Ratio		
Service workers	148	100	67.6	1.6	69	46.6	2.5	104	55	52.9	1.6	13	12.5	1.4		
Medical workers	82	35	42.7	1.0	15	18.3	1.0	267	88	33.0	1.0	24	9.0	1.0		
Teachers/ Nursery nurses	26	10	38.5	0.9	1	3.8	0.2	23	6	26.1	0.8	2	8.7	1.0		
Other regular workers	1,160	599	51.6	1.2	302	26.0	1.4	293	102	34.8	1.1	29	9.9	1.1		
Other temporary/ daily workers	158	119	75.3	1.8	79	50.0	2.7	111	55	49.5	1.5	22	19.8	2.2		
Other self-employed	202	122	60.4	1.4	67	33.2	1.8	40	22	55.0	1.7	12	30.0	3.3		
Jobless	484	324	66.9	1.6	190	39.3	2.1	256	134	52.3	1.6	61	23.8	2.7		
Others	113	60	53.1	1.2	29	25.7	1.4	208	108	51.9	1.6	43	20.7	2.3		
<b>Total</b>	<b>2,373</b>	<b>1,369</b>	<b>57.7</b>		<b>752</b>	<b>31.7</b>		<b>1,302</b>	<b>570</b>	<b>43.8</b>		<b>206</b>	<b>15.8</b>			

Others:Houskeepers/ Students/ Unknown

Ratio: The ratio of each proportion to that of medical workers



【診断時病状 2】

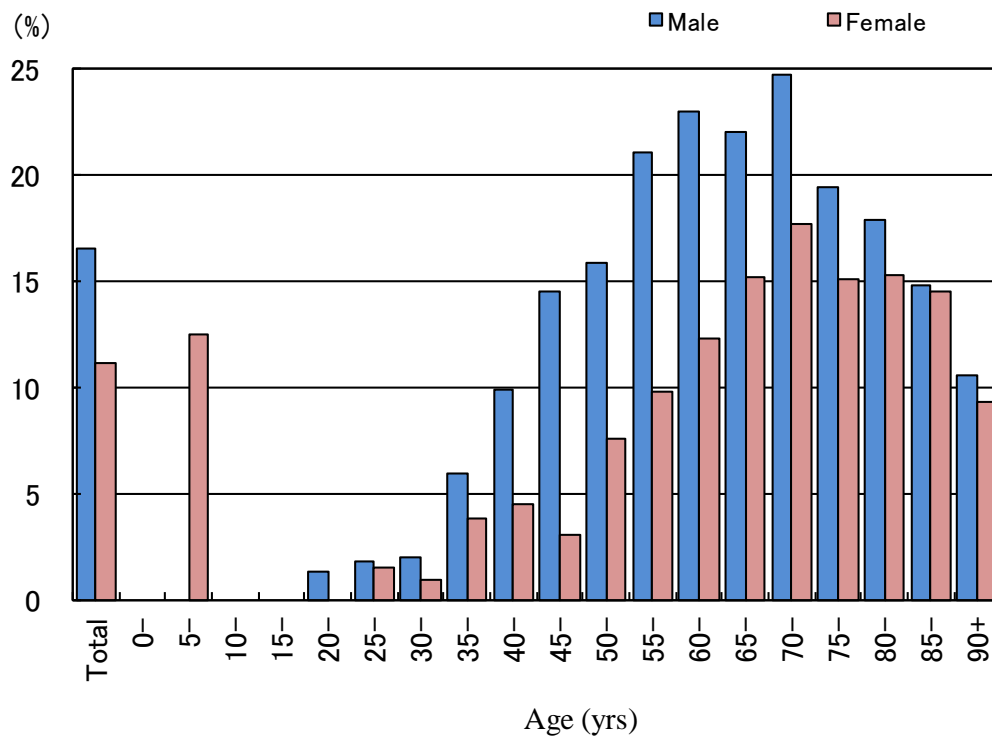


Fig.4 Proportion of newly notified tuberculosis patients with diabetes mellitus in each age-group by sex, 2013

Table 2 Number of newly notified tuberculosis patients with HIV infection, by sex and age group, 2013 and 2007–2013

Age group	Sputum smear positive		Other bacteriologically-positive		Bacteriologically-negative		Extra-pulmonary		Total	
	M	F	M	F	M	F	M	F	M	F
2013 Calendar year										
Total	15 (2)	1	9 (3)	1 (1)	4	0	17 (3)	3 (1)	45 (8)	5 (2)
0-19	0	0	0	0	0	0	0	0	0	0
20-24	0	0	0	0	0	0	0	0	0	0
25-29	1	0	0	0	0	0	0	1 (1)	1	1 (1)
30-34	1	0	1	0	0	0	6 (3)	0	8 (3)	0
35-39	2 (1)	0	0	1 (1)	0	0	1	1	3 (1)	2 (1)
40-44	4 (1)	0	2	0	0	0	4	0	10 (1)	0
45-49	1	0	3 (3)	0	1	0	3	1	8 (3)	1
50-54	1	0	2	0	2	0	0	0	5	0
55-59	2	0	1	0	0	0	1	0	4	0
60-64	1	0	0	0	0	0	0	0	1	0
65-69	0	0	0	0	1	0	1	0	2	0
70-74	0	0	0	0	0	0	1	0	1	0
75-79	1	0	0	0	0	0	0	0	1	0
80+	1	1	0	0	0	0	0	0	1	1
2007-2013 Calendar year										
Total	123 (12)	21 (13)	64 (13)	9 (6)	35 (4)	5 (3)	137 (24)	22 (11)	359 (53)	57 (33)
0-19	1 (1)	0	0	0	0	0	2	0	3 (1)	0
20-24	3 (2)	0	1	0	1 (1)	1 (1)	1	1	6 (3)	2 (1)
25-29	7 (3)	3 (2)	1 (1)	1 (1)	1 (1)	0	8 (1)	1 (1)	17 (6)	5 (4)
30-34	10 (3)	4 (4)	6	3 (2)	1	1 (1)	19 (7)	4 (2)	36 (10)	12 (9)
35-39	18 (1)	3 (3)	14 (4)	2 (2)	5	0	21 (3)	3 (2)	58 (8)	8 (7)
40-44	25 (1)	3 (3)	12 (4)	0	6 (1)	3 (1)	32 (10)	5 (4)	75 (16)	11 (8)
45-49	12 (1)	1 (1)	7 (3)	1 (1)	4 (1)	0	26 (3)	1	49 (8)	3 (2)
50-54	10	0	10 (1)	0	5	0	6	0	31 (1)	0
55-59	7	0	3	0	4	0	8	2 (2)	22	2 (2)
60-64	10	1	5	0	3	0	4	0	22	1
65-69	9	0	2	0	3	0	4	1	18	1
70-74	2	2	1	0	1	0	2	1	6	3
75-79	3	0	0	0	1	0	3	2	7	2
80+	6	4	2	2	0	0	1	1	9	7

( ) : Re-count of foreigners

HIV : Human Immunodeficiency Virus. M : male patients, F : female patients.

Table 3 Drug susceptibility test results among newly notified pulmonary tuberculosis patients, by treatment history, 2007–2013

Treatment history, Culture examination results, Drug susceptibility test results	2007				2008				2009				2010				2011				2012				2013			
	n	%	%	%	n	%	%	%	n	%	%	%	n	%	%	%	n	%	%	%	n	%	%	%	n	%	%	%
<b>Total</b>																												
Pulmonary tuberculosis	19,893	100%			19,393	100%			18,912	100%			18,328	100%			17,519	100%			16,432	100%			15,972	100%		
Culture result obtained	12,690	63.8			12,087	62.3			14,146	74.8			14,656	80.0			13,902	79.4			14,058	85.6			13,311	83.3		
Culture positive	9,983	50.2	100%		9,480	48.9	100%		10,902	57.6	100%		11,495	62.7	100%		10,915	62.3	100%		11,261	68.5	100%		10,523	65.9	100%	
DST result obtained	4,173		41.8	100%	4,332		45.7	100%	6,920		63.5	100%	8,380		72.9	100%	8,046		73.7	100%	8,347		74.1	100%	7,701		73.2	100%
MDR	50			1.2	48			1.1	56			0.8	68			0.8	60			0.7	60			0.7	47			0.6
Any INH resistance	258			6.2	211			4.9	346			5.0	396			4.7	386			4.8	380			4.6	369			4.8
Any RFP resistance	72			1.7	64			1.5	80			1.2	95			1.1	86			1.1	73			0.9	64			0.8
Any resistance*	628			15.0	550			12.7	903			13.0	1,025			12.2	998			12.4	810			9.7	757			9.8
<b>New treatment</b>																												
Pulmonary tuberculosis	18,220	100%			17,515	100%			17,125	100%			16,481	100%			15,761	100%			15,040	100%			14,727	100%		
Culture result obtained	11,602	63.7			10,845	61.9			12,801	74.8			13,164	79.9			12,454	79.0			12,882	85.7			12,279	83.4		
Culture positive	9,148	50.2	100%		8,540	48.8	100%		9,899	57.8	100%		10,374	62.9	100%		9,800	62.2	100%		10,379	69.0	100%		9,782	66.4	100%	
DST result obtained	3,752			41.0	3,885			45.5	6,276			63.4	100%	7,553			72.8	7,226			73.7	100%	7,676			74.0	100%	
MDR	23			0.6	28			0.7	34			0.5	38			0.5	38			0.5	38			0.5	31			0.4
Any INH resistance	194			5.2	163			4.2	276			4.4	311			4.1	297			4.1	310			4.0	326			4.5
Any RFP resistance	36			1.0	39			1.0	50			0.8	56			0.7	57			0.8	46			0.6	42			0.6
Any resistance*	516			13.8	470			12.1	780			12.4	876			11.6	858			11.9	712			9.3	680			9.5
<b>Re-treatment</b>																												
Pulmonary tuberculosis	1,409	100%			1,542	100%			1,468	100%			1,461	100%			1,351	100%			1,094	100%			1,013	100%		
Culture result obtained	946	67.1			1,059	68.7			1,134	77.2			1,217	83.3			1,151	85.2			959	87.7			852	84.1		
Culture positive	713	50.6	100%		779	50.5	100%		830	56.5	100%		885	60.6	100%		863	63.9	100%		693	63.3	100%		586	57.8	100%	
DST result obtained	376			52.7	391			50.2	559			67.3	100%	694			78.4	661			76.6	100%	555			80.1	100%	
MDR	27			7.2	20			5.1	20			3.6	27			3.9	22			3.3	22			4.0	16			3.7
Any INH resistance	63			16.8	48			12.3	65			11.6	79			11.4	80			12.1	67			12.1	35			8.0
Any RFP resistance	36			9.6	24			6.1	28			5.0	36			5.2	28			4.2	26			4.7	22			5.1
Any resistance*	107			28.5	75			19.2	112			20.0	132			19.0	122			18.5	94			16.9	65			14.9
<b>No information about treatment history</b>																												
Pulmonary tuberculosis	264	100%			336	100%			319	100%			386	100%			407	100%			298	100%			232	100%		
Culture result obtained	142	53.8			183	54.5			211	66.1			275	71.2			297	73.0			217	72.8			180	77.6		
Culture positive	122	46.2	100%		161	47.9	100%		173	54.2	100%		236	61.1	100%		252	61.9	100%		189	63.4	100%		155	66.8	100%	
DST result obtained	45			36.9	56			34.8	85			49.1	100%	133			56.4	159			63.1	100%	116			61.4	100%	
MDR	0			0.0	0			0.0	2			2.4	3			2.3	0			0.0	0			0.0	0			0.0
Any INH resistance	1			2.2	0			0.0	5			5.9	6			4.5	9			5.7	3			2.6	8			8.0
Any RFP resistance	0			0.0	1			1.8	2			2.4	3			2.3	1			0.6	1			0.9	0			0.0
Any resistance*	5			11.1	5			8.9	11			12.9	17			12.8	18			11.3	4			3.4	12			12.0

DST: Drug susceptibility test MDR : Multi-drug resistant, i.e., resistant to at least INH and RFP INH: isoniazid RFP: rifampicin

Cases having drug resistance are counted independently by drug.

Previous table Drug susceptibility test results among newly notified pulmonary tuberculosis patients, by sex and age group, 2013 and 2007–2013

Age group	Total										New treatment (Re-count)									
	Male					Female					Male					Female				
	DST result obtained	MDR	Any INH resistance	Any RFP resistance	Any resistance	DST result obtained	MDR	Any INH resistance	Any RFP resistance	Any resistance	DST result obtained	MDR	Any INH resistance	Any RFP resistance	Any resistance	DST result obtained	MDR	Any INH resistance	Any RFP resistance	Any resistance
2013 Calendar year																				
Total	4,995	34	249	47	515	2,706	13	120	17	242	4,615	20	219	29	462	2,551	11	107	13	218
0-19	33	1	4	1	9	29	1	3	1	6	32	0	3	0	8	28	1	3	1	6
20-29	220	5	20	6	30	213	5	20	5	42	211	5	19	6	29	206	3	18	3	39
30-39	285	1	19	1	36	223	3	18	3	28	275	1	19	1	35	215	3	16	3	26
40-49	392	2	21	4	55	191	1	8	1	16	376	1	19	3	52	182	1	7	1	14
50-59	523	5	27	8	66	166	2	5	4	17	484	3	25	4	60	157	2	5	3	16
60-69	851	4	44	8	103	255	0	14	0	30	792	0	37	3	91	243	0	14	0	28
70-79	1,096	8	59	9	114	481	0	21	2	47	1,010	5	50	6	102	435	0	20	1	42
80+	1,595	8	55	10	102	1,148	1	31	1	56	1,435	5	47	6	85	1,085	1	24	1	47
2007-2013 Calendar year																				
Total	31,854	252	1,591	356	3,908	16,045	137	757	178	1,765	28,604	151	1,269	218	3,359	14,930	79	610	108	1,535
0-19	207	6	19	6	44	202	2	16	2	42	201	4	17	4	42	191	2	14	2	38
20-29	1,580	29	108	38	275	1,360	34	113	43	242	1,512	23	94	31	259	1,291	23	98	30	220
30-39	2,086	15	136	24	319	1,582	19	101	28	229	1,969	11	126	20	298	1,512	14	89	19	207
40-49	2,618	21	140	33	378	1,223	15	61	22	170	2,447	13	122	21	338	1,154	9	53	15	155
50-59	3,962	38	219	59	594	1,046	13	48	19	124	3,649	23	187	36	531	989	5	35	10	108
60-69	5,832	41	309	68	816	1,551	12	89	13	209	5,285	23	253	37	702	1,450	6	69	6	177
70-79	7,060	61	347	76	829	3,063	20	134	25	324	6,190	31	246	39	673	2,782	8	105	12	276
80+	8,509	41	313	52	653	6,018	22	195	26	425	7,351	23	224	30	516	5,561	12	147	14	354
2007-2012 Calendar year																				
Total	100%	0.8	5.0	1.1	12.3	100%	0.9	4.7	1.1	11.0	100%	0.5	4.4	0.8	11.7	100%	0.5	4.1	0.7	10.3
0-19	100	2.9	9.2	2.9	21.3	100	1.0	7.9	1.0	20.8	100	2.0	8.5	2.0	20.9	100	1.0	7.3	1.0	19.9
20-29	100	1.8	6.8	2.4	17.4	100	2.5	8.3	3.2	17.8	100	1.5	6.2	2.1	17.1	100	1.8	7.6	2.3	17.0
30-39	100	0.7	6.5	1.2	15.3	100	1.2	6.4	1.8	14.5	100	0.6	6.4	1.0	15.1	100	0.9	5.9	1.3	13.7
40-49	100	0.8	5.3	1.3	14.4	100	1.2	5.0	1.8	13.9	100	0.5	5.0	0.9	13.8	100	0.8	4.6	1.3	13.4
50-59	100	1.0	5.5	1.5	15.0	100	1.2	4.6	1.8	11.9	100	0.6	5.1	1.0	14.6	100	0.5	3.5	1.0	10.9
60-69	100	0.7	5.3	1.2	14.0	100	0.8	5.7	0.8	13.5	100	0.4	4.8	0.7	13.3	100	0.4	4.8	0.4	12.2
70-79	100	0.9	4.9	1.1	11.7	100	0.7	4.4	0.8	10.6	100	0.5	4.0	0.6	10.9	100	0.3	3.8	0.4	9.9
80+	100	0.5	3.7	0.6	7.7	100	0.4	3.2	0.4	7.1	100	0.3	3.0	0.4	7.0	100	0.2	2.6	0.3	6.4

DST: Drug susceptibility test. MDR: Multi-drug resistance, i.e., resistant to at least INH and RFP.

INH: Isoniazid. RFP: Rifampicin.

Previous table Drug susceptibility test results among newly notified pulmonary tuberculosis patients, by sex and age group, 2007-2013 (Re-count of foreigners)

Age group	Total										New treatment (Re-count)									
	Male					Female					Male					Female				
	DST result obtained	MDR	Any INH resistance	Any RFP resistance	Any resistance	DST result obtained	MDR	Any INH resistance	Any RFP resistance	Any resistance	DST result obtained	MDR	Any INH resistance	Any RFP resistance	Any resistance	DST result obtained	MDR	Any INH resistance	Any RFP resistance	Any resistance
2007-2013 Calendar year																				
総数 Total	812	32	82	37	146	962	48	128	59	206	761	22	64	27	129	902	34	109	42	179
0-19	35	5	11	5	17	28	1	3	1	3	33	3	9	3	15	27	1	2	1	2
20-29	372	21	43	26	71	418	31	72	37	114	356	16	33	21	64	398	22	61	27	101
30-39	150	4	12	4	21	253	10	34	12	49	143	3	11	3	19	234	7	31	8	44
40-49	84	2	7	2	17	146	2	10	4	23	76	0	4	0	13	135	1	9	2	20
50-59	59	0	2	0	5	49	1	4	2	6	55	0	2	0	5	45	1	2	2	3
60-69	45	0	3	0	9	24	1	2	1	3	39	0	2	0	8	24	1	2	1	3
70-79	37	0	2	0	3	19	2	3	2	4	34	0	2	0	3	15	1	2	1	2
80+	30	0	2	0	3	25	0	0	0	4	25	0	1	0	2	24	0	0	0	4
2007-2013 Calendar year																				
総数 Total	100%	3.9	10.1	4.6	18.0	100%	5.0	13.3	6.1	21.4	100%	2.9	8.4	3.5	17.0	100%	3.8	12.1	4.7	19.8
0-19	100	14.3	31.4	14.3	48.6	100	3.6	10.7	3.6	10.7	100	9.1	27.3	9.1	45.5	100	3.7	7.4	3.7	7.4
20-29	100	5.6	11.6	7.0	19.1	100	7.4	17.2	8.9	27.3	100	4.5	9.3	5.9	18.0	100	5.5	15.3	6.8	25.4
30-39	100	2.7	8.0	2.7	14.0	100	4.0	13.4	4.7	19.4	100	2.1	7.7	2.1	13.3	100	3.0	13.2	3.4	18.8
40-49	100	2.4	8.3	2.4	20.2	100	1.4	6.8	2.7	15.8	100	0.0	5.3	0.0	17.1	100	0.7	6.7	1.5	14.8
50-59	100	0.0	3.4	0.0	8.5	100	2.0	8.2	4.1	12.2	100	0.0	3.6	0.0	9.1	100	2.2	4.4	4.4	6.7
60-69	100	0.0	6.7	0.0	20.0	100	4.2	8.3	4.2	12.5	100	0.0	5.1	0.0	20.5	100	4.2	8.3	4.2	12.5
70-79	100	0.0	5.4	0.0	8.1	100	10.5	15.8	10.5	21.1	100	0.0	5.9	0.0	8.8	100	6.7	13.3	6.7	13.3
80+	100	0.0	6.7	0.0	10.0	100	0.0	0.0	0.0	16.0	100	0.0	4.0	0.0	8.0	100	0.0	0.0	0.0	16.7

DST: Drug susceptibility test. MDR: Multi-drug resistance, i.e., resistant to at least INH and RFP. INH: Isoniazid. RFP: Rifampicin.