

【Treatment 1】

Table 1 Number of notified patients with tuberculosis according to treatment history and age group, 2014

Age group (years)	Newly notified patients with tuberculosis	Treatment history				Proportion of patients undergoing re- treatment for tuberculosis (%)
		New	Re-treatment		Unknown	
			All	Previous treatment of LTBI (re-count)		
Total	19,615	18,157	1,179	82	279	6.1
0-4	17	17	0	0	0	0.0
5-9	15	14	1	1	0	6.7
10-14	17	16	1	1	0	5.9
15-19	168	152	14	10	2	8.4
20-24	553	529	20	9	4	3.6
25-29	635	600	32	6	3	5.1
30-34	612	576	31	4	5	5.1
35-39	623	581	37	6	5	6.0
40-44	717	676	38	3	3	5.3
45-49	723	668	50	10	5	7.0
50-54	711	655	55	9	1	7.7
55-59	803	742	55	5	6	6.9
60-64	1,198	1,104	81	3	13	6.8
65-69	1,399	1,287	101	6	11	7.3
70-74	1,806	1,669	116	4	21	6.5
75-79	2,222	2,039	142	2	41	6.5
80-84	2,949	2,731	156	2	62	5.4
85-89	2,804	2,568	178	1	58	6.5
90+	1,643	1,533	71	0	39	4.4

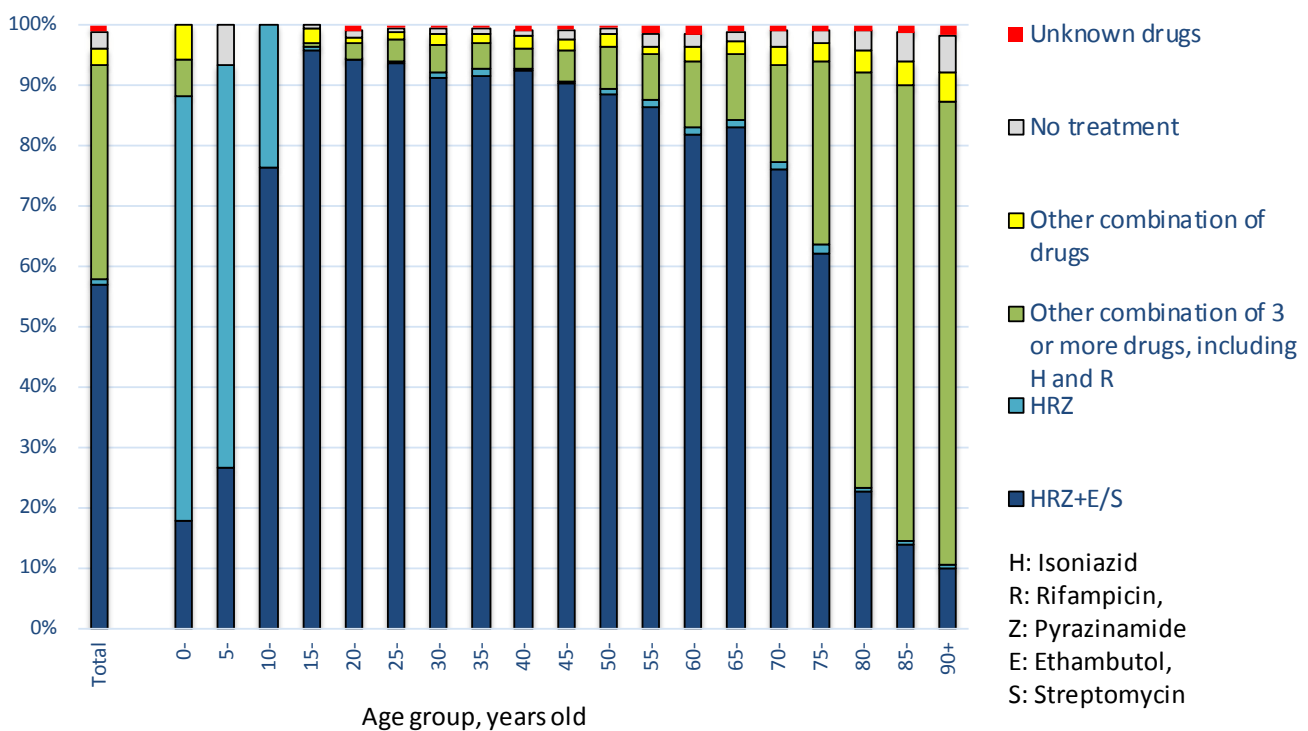
Proportion of patients undergoing re-treatment for tuberculosis: those with an unknown treatment history were excluded.

Table 2 Number of patients with TB on re-treatment, by year when previous TB treatment was initiated and age group, 2014

Year when previous TB treatment initiated	Total	Age group (years)								Previous TB treatment regimen unknown (re-count)
		0-19	20-29	30-39	40-49	50-59	60-69	70-79	80+	
Total	1,179	16	52	68	88	110	182	258	405	374
~1949	101	0	0	0	0	0	0	10	91	82
1950-59	136	0	0	0	0	1	5	36	94	87
1960-69	82	0	0	0	0	0	15	37	30	47
1970-79	46	0	0	0	0	4	19	13	10	31
1980-89	39	0	0	0	4	4	13	10	8	26
1990-99	71	1	2	6	9	15	21	9	8	32
2000-09	236	4	12	23	27	30	40	50	50	46
2010-14	468	11	38	39	48	56	69	93	114	23
2005-2014 (re-count)										
2005	23	0	0	2	1	4	3	7	6	4
2006	26	1	1	3	2	2	8	4	5	7
2007	19	0	2	2	1	1	2	5	6	3
2008	39	0	2	4	4	4	9	7	9	4
2009	43	1	3	3	7	8	4	10	7	3
2010	56	1	2	5	5	6	11	6	20	5
2011	88	2	4	9	10	13	13	16	21	7
2012	136	3	10	11	13	10	17	37	35	1
2013	158	3	14	12	18	22	25	31	33	6
2014	30	2	8	2	2	5	3	3	5	4

TB: tuberculosis

Fig.1 Anti-tuberculosis drugs upon notification by age group in 2014



Previous table Number of retreatment tuberculosis patients by previous tuberculosis treatment regimen and age group, 2014

Age group	Retreatment	Previous treatment regimen					Unknown
		Regimen with HRZ	Other regimen with HR	Other regimen	LTBI treatment		
Total	1,179	380	211	132	82	374	
0-4	0	0	0	0	0	0	
5-9	1	0	0	0	1	0	
10-14	1	0	0	0	1	0	
15-19	14	2	2	0	10	0	
20-24	20	8	1	0	9	2	
25-29	32	20	2	1	6	3	
30-34	31	20	2	1	4	4	
35-39	37	19	4	0	6	8	
40-44	38	20	8	1	3	6	
45-49	50	22	7	2	10	9	
50-54	55	27	8	2	9	9	
55-59	55	30	7	1	5	12	
60-64	81	34	13	7	3	24	
65-69	101	39	13	12	6	31	
70-74	116	48	21	14	4	29	
75-79	142	40	24	21	2	55	
80-84	156	32	34	29	2	59	
85-89	178	15	42	35	1	85	
90+	71	4	23	6	0	38	

H : Isoniazid, R : Rifampicin, Z : Pyrazinamide

LTBI : Latent Tuberculosis Infection

Previous table Treatment with PZA in initial phase among newly notified tuberculosis patients in 2013 and completed standard treatment

	Total	Completed (%)
Total	12,095	9,742
2 months	8,832	8,339 (86.9)
≥1 month and <2 months	866	693 (7.2)
<1 month	774	564 (5.9)
Unknown	1,623	146 (-)

( % ) : Proportions: cases with unknown PZA use status excluded.

PZA: Pyrazinamide

Fig.2 Proportion of the outpatients and the hospitalized patients by age group in 2014 (N=15,149)

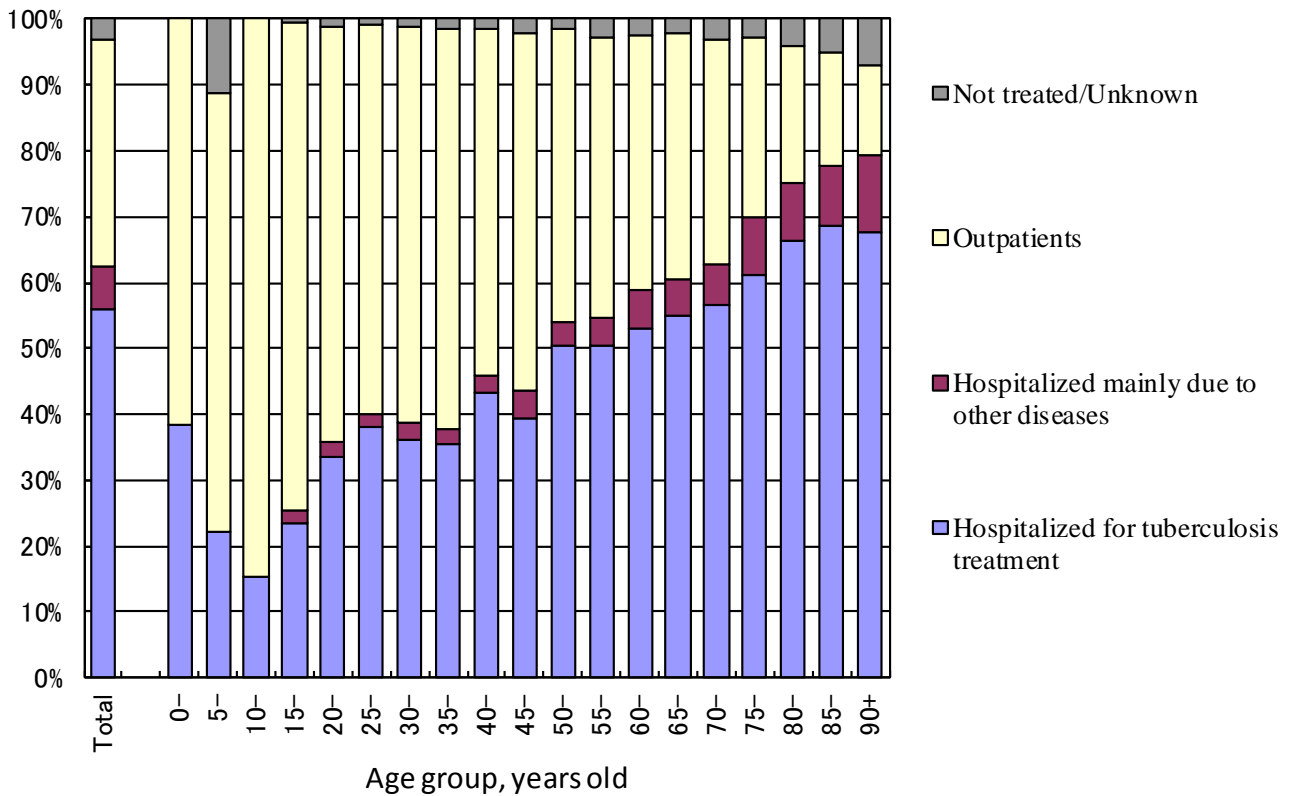


Table 3 Duration of hospitalization among newly notified patients with tuberculosis in 2013

	Newly notified patients with tuberculosis						
	Total	Patients with pulmonary tuberculosis					Patients with extra-pulmonary tuberculosis
		Sub-total	Sputum-smear positive		Other bacteriologically positive	Bacteriologically negative and others	
			New	Re-treatment			
Total number of newly notified TB patients	20,435	15,941	7,600	529	5,478	2,334	4,494
Number of hospitalized TB patients	10,296	8,974	6,828	467	1,399	280	1,322
Median (days)*	62	63	66	67	45	30	43
[1st quartile, 3rd quartile] (days)*	[34, 100]	[36, 100]	[39, 104]	[41, 102]	[23, 81]	[16, 67]	[20, 89]

\* Duration of hospitalization among those hospitalized with tuberculosis and with known date of discharge.

TB: tuberculosis

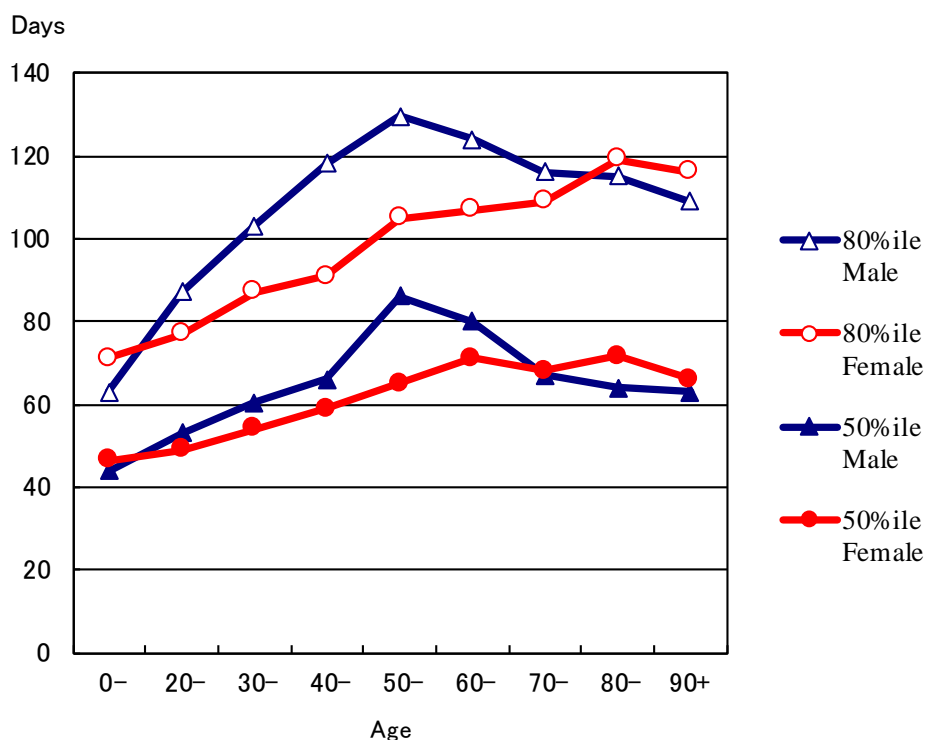
Table 4 Reasons for not continuing treatment 1 year after commencing treatment, and treatment duration among those newly notified in 2012 and 2013, by patient classification

	Newly notified patients with tuberculosis							Patients with LTBI (Not included in the total)
	Total	Patients with pulmonary tuberculosis					Patients with extra- pulmonary tuberculosis	
		Sub-total	Sputum-smear positive		Other bacteriologically positive	Bacteriologically negative and others		
			New	Re-treatment				
Newly notified cases in 2012*	21,221	16,411	7,694	579	5,656	2,482	4,810	8,768
Number of those who started treatment in 2012	20,646 (100%)	15,929 (100%)	7,508 (100%)	571 (100%)	5,435 (100%)	2,415 (100%)	4,717 (100%)	8,643 (100%)
Number of those no longer on treatment at the end of 2013 <sup>§</sup>	17,938 (86.9)	13,847 (86.9)	6,358 (84.7)	475 (83.2)	4,824 (88.8)	2,190 (90.7)	4,091 (86.7)	8,104 (93.8)
Treatment completed	14,769 (71.5)	11,428 (71.7)	4,889 (65.1)	374 (65.5)	4,180 (76.9)	1,985 (82.2)	3,341 (70.8)	7,212 (83.4)
Treatment stopped due to physician's instruction	491 (2.4)	314 (2.0)	96 (1.3)	19 (3.3)	112 (2.1)	87 (3.6)	177 (3.8)	730 (8.4)
Defaulted	95 (0.5)	72 (0.5)	18 (0.2)	6 (1.1)	27 (0.5)	21 (0.9)	23 (0.5)	126 (1.5)
Missing	9 (0.0)	9 (0.1)	4 (0.1)	0 (0.0)	2 (0.0)	3 (0.1)	0 (0.0)	1 (0.0)
Moved out of Japan	46 (0.2)	35 (0.2)	12 (0.2)	2 (0.4)	10 (0.2)	11 (0.5)	11 (0.2)	11 (0.1)
Dead	2,526 (12.2)	1,989 (12.5)	1,339 (17.8)	74 (13.0)	493 (9.1)	83 (3.4)	537 (11.4)	24 (0.3)
Unknown reasons	2 (0.0)	0 (0.0)	0 (0.0)	0 (0.0)	0 (0.0)	0 (0.0)	2 (0.0)	0 (0.0)
Median of duration of treatment among those completed treatment and still receiving treatment								
Subjects#	15,558	11,958	5,154	403	4,347	2,054	3,600	7,478
Median (days)	273	271	276	285	257	192	274	184
[1st quartile, 3rd quartile] (days)	[187, 320]	[186, 309]	[197, 344]	[271, 373]	[185, 294]	[183, 277]	[189, 354]	[181, 196]
Newly notified cases in 2013**	20,435	15,941	7,600	529	5,478	2,334	4,494	7,129
Number of those who started treatment in 2013	19,886 (100%)	15,483 (100%)	7,420 (100%)	522 (100%)	5,256 (100%)	2,285 (100%)	4,403 (100%)	7,001 (100%)
Number of those no longer on treatment at the end of 2014 <sup>§</sup>	17,611 (88.6)	13,744 (88.8)	6,506 (87.7)	438 (83.9)	4,722 (89.8)	2,078 (90.9)	3,867 (87.8)	6,521 (93.1)
Treatment completed	14,160 (71.2)	11,066 (71.5)	4,908 (66.1)	322 (61.7)	4,006 (76.2)	1,830 (80.1)	3,094 (70.3)	5,727 (81.8)
Treatment stopped due to physician's instruction	423 (2.1)	255 (1.6)	81 (1.1)	13 (2.5)	87 (1.7)	74 (3.2)	168 (3.8)	622 (8.9)
Defaulted	82 (0.4)	56 (0.4)	18 (0.2)	2 (0.4)	19 (0.4)	17 (0.7)	26 (0.6)	110 (1.6)
Missing	14 (0.1)	13 (0.1)	2 (0.0)	0 (0.0)	5 (0.1)	6 (0.3)	1 (0.0)	5 (0.1)
Moved out of Japan	47 (0.2)	35 (0.2)	19 (0.3)	0 (0.0)	7 (0.1)	9 (0.4)	12 (0.3)	15 (0.2)
Dead	2,882 (14.5)	2,317 (15.0)	1,478 (19.9)	101 (19.3)	597 (11.4)	141 (6.2)	565 (12.8)	42 (0.6)
Unknown reasons	3 (0.0)	2 (0.0)	0 (0.0)	0 (0.0)	1 (0.0)	1 (0.0)	1 (0.0)	0 (0.0)
Median of duration of treatment among those completed treatment and still receiving treatment								
Subjects#	14,956	11,628	5,166	355	4,207	1,900	3,328	5,972
Median (days)	273	273	276	285	260	196	274	184
[1st quartile, 3rd quartile] (days)	[187, 324]	[187, 315]	[196, 344]	[270, 368]	[185, 299]	[183, 279]	[189, 353]	[181, 198]

\* Based on the annual report database in 2013. \*\* Based on the annual report database in 2014. <sup>§</sup> As registered by the public health center.

# Subjects: Those who completed tuberculosis treatment or those who were still receiving treatment at the end of years (2013/2014).

LTBI: Latent tuberculosis infection



Previous Fig. Median (50 percentile) and 80 percentile of duration of hospitalization among those hospitalized with tuberculosis and with known discharged day, new sputum-smear positive pulmonary tuberculosis patients in 2013 by sex and age group

Previous table Proportion (%) hospitalized among newly notified tuberculosis patients in 2014 by age group and patient classification

Age	Pulmonary TB									
	Total		Sputum smear positive		Other bacillary positive		Bacillary negative /unknown		Extra-pulmonary	
	Ht	Ho	Ht	Ho	Ht	Ho	Ht	Ho	Ht	Ho
Total	55.9	6.7	90.4	2.1	24.7	11.8	11.1	10.1	29.1	20.4
0-19	23.9	1.6	86.5	0.0	13.2	4.4	4.8	0.0	10.3	17.2
20-29	35.9	2.1	89.1	0.0	14.5	4.3	5.7	1.6	18.0	9.9
30-39	35.7	2.7	89.1	0.3	11.9	5.2	3.9	2.1	15.2	8.0
40-49	41.5	3.3	86.7	0.6	12.5	5.2	7.3	5.0	14.7	13.2
50-59	50.5	4.0	90.5	1.2	15.3	5.1	6.9	9.4	22.2	8.5
60-69	54.1	5.6	90.5	1.5	20.2	9.7	11.9	10.2	23.4	17.5
70-79	59.0	7.7	90.7	2.4	26.1	12.7	13.5	16.3	27.0	20.5
80-89	67.5	8.9	91.4	2.9	34.6	16.6	23.0	22.7	38.0	24.8
90+	67.6	11.9	89.9	3.5	38.6	23.7	27.5	21.7	38.9	34.1

Ht: Hospitalized for tuberculosis treatment

Ho: Hospitalized mainly due to other diseases

Previous table Outcome of treatment with INH or RFP in initial phase among those newly notified TB patients in 2013 by completion of standard regimen

	Treatment with INH		Treatment with RFP	
	Total	Completed	Total	Completed
Total	19,602	14,071 (100%)	19,401	14,039 (100%)
Full course without interruption	12,161	11,021 (78.3)	12,174	11,163 (79.5)
Full course with interruption	1,547	1,217 (8.6)	1,672	1,333 (9.5)
Interrupted and discontinued	842	458 (3.3)	583	157 (1.1)
* Unknown*	5,052	1,375 (9.8)	4,972	1,386 (9.9)

\*Including those who were still receiving treatment with INH or RFP and those who were deleted from registration during their treatment.

INH: Isoniazid, RFP : Rifampicin

【Treatment Outcomes】

**Table 5.1 Treatment outcomes of newly notified patients with pulmonary tuberculosis (PTB) by patient classification, 2013 year cohort - all PTB patients**

	Patients with pulmonary tuberculosis									
	Total	Sputum-smear positive					Other bacteriologically positive	Bacteriologically negative and others		
		New	Re-treatment							
New pulmonary tuberculosis patients	15,941 (100%)	7,600 (100%)	529 (100%)				5,478 (100%)	2,334 (100%)		
Treatment outcomes (*)										
<b>1. Treatment Success</b>	<b>8,554</b>	<b>53.7</b>	<b>3,769</b>	<b>49.6</b>	<b>221</b>	<b>41.8</b>	<b>3,123</b>	<b>57.0</b>	<b>1,441</b>	<b>61.7</b>
Cure	2,362	14.8	1,415	18.6	85	16.1	638	11.6	224	9.6
Treatment completed	6,192	38.8	2,354	31.0	136	25.7	2,485	45.4	1,217	52.1
Treatment Completed 1	4,217	26.5	1,744	22.9	95	18.0	1,161	21.2	1,217	52.1
Treatment Completed 2	1,975	12.4	610	8.0	41	7.8	1,324	24.2	0	0.0
<b>2. Died</b>	<b>2,632</b>	<b>16.5</b>	<b>1,640</b>	<b>21.6</b>	<b>114</b>	<b>21.6</b>	<b>701</b>	<b>12.8</b>	<b>177</b>	<b>7.6</b>
<b>3. Treatment failed</b>	<b>65</b>	<b>0.4</b>	<b>45</b>	<b>0.6</b>	<b>4</b>	<b>0.8</b>	<b>14</b>	<b>0.3</b>	<b>2</b>	<b>0.1</b>
<b>4. Lost to follow-up</b>	<b>1,101</b>	<b>6.9</b>	<b>334</b>	<b>4.4</b>	<b>25</b>	<b>4.7</b>	<b>496</b>	<b>9.1</b>	<b>246</b>	<b>10.5</b>
Lost to follow-up 1	321	2.0	132	1.7	9	1.7	116	2.1	64	2.7
Lost to follow-up 2	780	4.9	202	2.7	16	3.0	380	6.9	182	7.8
<b>5. Transfer out</b>	<b>498</b>	<b>3.1</b>	<b>241</b>	<b>3.2</b>	<b>27</b>	<b>5.1</b>	<b>139</b>	<b>2.5</b>	<b>91</b>	<b>3.9</b>
<b>6. Still on treatment</b>	<b>1,469</b>	<b>9.2</b>	<b>847</b>	<b>11.1</b>	<b>74</b>	<b>14.0</b>	<b>423</b>	<b>7.7</b>	<b>125</b>	<b>5.4</b>
Still on treatment 1	301	1.9	170	2.2	18	3.4	90	1.6	23	1.0
Still on treatment 2	228	1.4	121	1.6	6	1.1	79	1.4	22	0.9
Still on treatment 3	619	3.9	382	5.0	39	7.4	146	2.7	52	2.2
Still on treatment 4	321	2.0	174	2.3	11	2.1	108	2.0	28	1.2
<b>7. Unclassified</b>	<b>1,622</b>	<b>10.2</b>	<b>724</b>	<b>9.5</b>	<b>64</b>	<b>12.1</b>	<b>582</b>	<b>10.6</b>	<b>252</b>	<b>10.8</b>
Unclassified 1	431	2.7	166	2.2	8	1.5	210	3.8	47	2.0
Unclassified 2	88	0.6	57	0.8	5	0.9	21	0.4	5	0.2
Unclassified 3	481	3.0	259	3.4	22	4.2	133	2.4	67	2.9
Unclassified 4	93	0.6	33	0.4	5	0.9	32	0.6	23	1.0
Unclassified 5	529	3.3	209	2.8	24	4.5	186	3.4	110	4.7

\*Treatment outcomes: See definitions in Table 6.



**Table 5.2 Treatment outcomes of newly notified patients with pulmonary tuberculosis (PTB) by patient classification,**

**2013 year cohort - foreign born patients with PTB**

	Patients with pulmonary tuberculosis									
	Total	Sputum-smear positive				Other bacteriologically positive	Bacteriologically negative and others			
		New	Re-treatment							
New pulmonary tuberculosis patients	848 (100%)	289 (100%)	19 (100%)			285 (100%)	255 (100%)			
Treatment outcomes (*)										
<b>1. Treatment Success</b>	<b>540</b>	<b>63.7</b>	<b>172</b>	<b>59.5</b>	<b>7</b>	<b>36.8</b>	<b>191</b>	<b>67.0</b>	<b>170</b>	<b>66.7</b>
Cure	119	14.0	53	18.3	1	5.3	31	10.9	34	13.3
Treatment completed	421	49.6	119	41.2	6	31.6	160	56.1	136	53.3
Treatment Completed 1	286	33.7	80	27.7	5	26.3	65	22.8	136	53.3
Treatment Completed 2	135	15.9	39	13.5	1	5.3	95	33.3	0	0.0
<b>2. Died</b>	<b>14</b>	<b>1.7</b>	<b>8</b>	<b>2.8</b>	<b>2</b>	<b>10.5</b>	<b>3</b>	<b>1.1</b>	<b>1</b>	<b>0.4</b>
<b>3. Treatment failed</b>	<b>3</b>	<b>0.4</b>	<b>2</b>	<b>0.7</b>	<b>0</b>	<b>0.0</b>	<b>1</b>	<b>0.4</b>	<b>0</b>	<b>0.0</b>
<b>4. Lost to follow-up</b>	<b>50</b>	<b>5.9</b>	<b>9</b>	<b>3.1</b>	<b>0</b>	<b>0.0</b>	<b>22</b>	<b>7.7</b>	<b>19</b>	<b>7.5</b>
Lost to follow-up 1	14	1.7	3	1.0	0	0.0	5	1.8	6	2.4
Lost to follow-up 2	36	4.2	6	2.1	0	0.0	17	6.0	13	5.1
<b>5. Transfer out</b>	<b>126</b>	<b>14.9</b>	<b>56</b>	<b>19.4</b>	<b>6</b>	<b>31.6</b>	<b>31</b>	<b>10.9</b>	<b>33</b>	<b>12.9</b>
<b>6. Still on treatment</b>	<b>55</b>	<b>6.5</b>	<b>27</b>	<b>9.3</b>	<b>3</b>	<b>15.8</b>	<b>14</b>	<b>4.9</b>	<b>11</b>	<b>4.3</b>
Still on treatment 1	20	2.4	12	4.2	1	5.3	6	2.1	1	0.4
Still on treatment 2	6	0.7	2	0.7	0	0.0	1	0.4	3	1.2
Still on treatment 3	22	2.6	8	2.8	0	0.0	7	2.5	7	2.7
Still on treatment 4	7	0.8	5	1.7	2	10.5	0	0.0	0	0.0
<b>7. Unclassified</b>	<b>60</b>	<b>7.1</b>	<b>15</b>	<b>5.2</b>	<b>1</b>	<b>5.3</b>	<b>23</b>	<b>8.1</b>	<b>21</b>	<b>8.2</b>
Unclassified 1	10	1.2	1	0.3	1	5.3	6	2.1	2	0.8
Unclassified 2	2	0.2	2	0.7	0	0.0	0	0.0	0	0.0
Unclassified 3	17	2.0	4	1.4	0	0.0	3	1.1	10	3.9
Unclassified 4	5	0.6	0	0.0	0	0.0	4	1.4	1	0.4
Unclassified 5	26	3.1	8	2.8	0	0.0	10	3.5	8	3.1

\*Treatment outcomes: See definitions in Table 6.

Table 5.1a Treatment outcome of newly notified pulmonary tuberculosis patients by patient classification, 2013 year cohort - 0~19 years old, all PTB patients

	Pulmonary tuberculosis patients									
	Total	Sputum-smear positive					Other bacteriologically positive	Bacteriologically negative and others		
		New	Retreatment							
New pulmonary tuberculosis patients	186		44		5		49		88	
Treatment outcomes (*)										
1. Treatment Success	144	77.4	36	81.8	3	60.0	34	69.4	71	80.7
Cure	26	14.0	12	27.3	1	20.0	7	14.3	6	6.8
Treatment completed	118	63.4	24	54.5	2	40.0	27	55.1	65	73.9
Treatment Completed 1	96	51.6	18	40.9	1	20.0	12	24.5	65	73.9
Treatment Completed 2	22	11.8	6	13.6	1	20.0	15	30.6	0	0.0
2. Died	0	0.0	0	0.0	0	0.0	0	0.0	0	0.0
3. Treatment failed	2	1.1	0	0.0	0	0.0	2	4.1	0	0.0
4. Lost to follow-up	6	3.2	0	0.0	0	0.0	3	6.1	0	0.0
Lost to follow-up 1	1	0.5	0	0.0	0	0.0	0	0.0	1	1.1
Lost to follow-up 2	5	2.7	0	0.0	0	0.0	3	6.1	2	2.3
5. Transfer out	13	7.0	2	4.5	1	20.0	5	10.2	5	5.7
6. Still on treatment	7	3.8	4	9.1	0	0.0	2	4.1	1	1.1
Still on treatment 1	5	2.7	3	6.8	0	0.0	1	2.0	1	1.1
Still on treatment 2	0	0.0	0	0.0	0	0.0	0	0.0	0	0.0
Still on treatment 3	2	1.1	1	2.3	0	0.0	1	2.0	0	0.0
Still on treatment 4	0	0.0	0	0.0	0	0.0	0	0.0	0	0.0
7. Unclassified	14	7.5	2	4.5	1	20.0	3	6.1	8	9.1
Unclassified 1	3	1.6	1	2.3	0	0.0	1	2.0	1	1.1
Unclassified 2	0	0.0	0	0.0	0	0.0	0	0.0	0	0.0
Unclassified 3	3	1.6	0	0.0	0	0.0	0	0.0	3	3.4
Unclassified 4	4	2.2	0	0.0	0	0.0	1	2.0	3	3.4
Unclassified 5	4	2.2	1	2.3	1	20.0	1	2.0	1	1.1

\*Treatment outcomes: See definitions in Table 6.

PTB: pulmonary tuberculosis, INH: isoniazid, RFP: rifampicin

Table 5.2a Treatment outcome of newly notified pulmonary tuberculosis patients by patient classification, 2013 year cohort - 0~19 years old, foreign born patients

	Pulmonary tuberculosis patients									
	Total	Sputum-smear positive					Other bacteriologically positive	Bacteriologically negative and others		
		New	Retreatment							
New pulmonary tuberculosis patients	47	13	1			13	20			
Treatment outcomes (*)										
1. Treatment Success	30	63.8	8	61.5	0	0.0	7	53.8	15	75.0
Cure	9	19.1	3	23.1	0	0.0	3	23.1	3	15.0
Treatment completed	21	44.7	5	38.5	0	0.0	4	30.8	12	60.0
Treatment Completed 1	19	40.4	5	38.5	0	0.0	2	15.4	12	60.0
Treatment Completed 2	2	4.3	0	0.0	0	0.0	2	15.4	0	0.0
2. Died	0	0.0	0	0.0	0	0.0	0	0.0	0	0.0
3. Treatment failed	0	0.0	0	0.0	0	0.0	0	0.0	0	0.0
4. Lost to follow-up	1	2.1	0	0.0	0	0.0	0	0.0	1	5.0
Lost to follow-up 1	1	2.1	0	0.0	0	0.0	0	0.0	1	5.0
Lost to follow-up 2	0	0.0	0	0.0	0	0.0	0	0.0	0	0.0
5. Transfer out	8	17.0	1	7.7	1	100.0	3	23.1	3	15.0
6. Still on treatment	5	10.6	4	30.8	0	0.0	1	7.7	0	0.0
Still on treatment 1	4	8.5	3	23.1	0	0.0	1	7.7	0	0.0
Still on treatment 2	0	0.0	0	0.0	0	0.0	0	0.0	0	0.0
Still on treatment 3	1	2.1	1	7.7	0	0.0	0	0.0	0	0.0
Still on treatment 4	0	0.0	0	0.0	0	0.0	0	0.0	0	0.0
7. Unclassified	3	6.4	0	0.0	0	0.0	2	15.4	1	5.0
Unclassified 1	0	0.0	0	0.0	0	0.0	0	0.0	0	0.0
Unclassified 2	0	0.0	0	0.0	0	0.0	0	0.0	0	0.0
Unclassified 3	1	2.1	0	0.0	0	0.0	0	0.0	1	5.0
Unclassified 4	1	2.1	0	0.0	0	0.0	1	7.7	0	0.0
Unclassified 5	1	2.1	0	0.0	0	0.0	1	7.7	0	0.0

\*Treatment outcomes: See definitions in Table 6.

PTB: pulmonary tuberculosis, INH: isoniazid, RFP: rifampicin

Table 5.1b Treatment outcome of newly notified pulmonary tuberculosis patients by patient classification, 2013 year cohort - 20~39 years old, all PTB patients

	Pulmonary tuberculosis patients									
	Total	Sputum-smear positive					Other bacteriologically positive	Bacteriologically negative and others		
		New	Retreatment							
New pulmonary tuberculosis patients	2,142	738	31				771	602		
Treatment outcomes (*)										
1. Treatment Success	1593	74.4	540	73.2	16	51.6	584	75.7	453	75.2
Cure	397	18.5	213	28.9	4	12.9	103	13.4	77	12.8
Treatment completed	1196	55.8	327	44.3	12	38.7	481	62.4	376	62.5
Treatment Completed 1	797	37.2	227	30.8	7	22.6	187	24.3	376	62.5
Treatment Completed 2	399	18.6	100	13.6	5	16.1	294	38.1	0	0.0
2. Died	4	0.2	4	0.5	0	0.0	0	0.0	0	0.0
3. Treatment failed	6	0.3	5	0.7	0	0.0	1	0.1	0	0.0
4. Lost to follow-up	152	7.1	35	4.7	0	0.0	62	8.0	55	9.1
Lost to follow-up 1	40	1.9	8	1.1	0	0.0	15	1.9	17	2.8
Lost to follow-up 2	112	5.2	27	3.7	0	0.0	47	6.1	38	6.3
5. Transfer out	185	8.6	75	10.2	8	25.8	57	7.4	45	7.5
6. Still on treatment	113	5.3	54	7.3	5	16.1	31	4.0	23	3.8
Still on treatment 1	29	1.4	20	2.7	1	3.2	6	0.8	2	0.3
Still on treatment 2	20	0.9	5	0.7	0	0.0	10	1.3	5	0.8
Still on treatment 3	42	2.0	19	2.6	2	6.5	11	1.4	10	1.7
Still on treatment 4	22	1.0	10	1.4	2	6.5	4	0.5	6	1.0
7. Unclassified	89	4.2	25	3.4	2	6.5	36	4.7	26	4.3
Unclassified 1	11	0.5	1	0.1	0	0.0	6	0.8	4	0.7
Unclassified 2	2	0.1	1	0.1	1	3.2	0	0.0	0	0.0
Unclassified 3	17	0.8	4	0.5	0	0.0	7	0.9	6	1.0
Unclassified 4	6	0.3	0	0.0	0	0.0	4	0.5	2	0.3
Unclassified 5	53	2.5	19	2.6	1	3.2	19	2.5	14	2.3

\*Treatment outcomes: See definitions in Table 6.

PTB: pulmonary tuberculosis, INH: isoniazid, RFP: rifampicin

Table 5.2b Treatment outcome of newly notified pulmonary tuberculosis patients by patient classification, 2013 year cohort - 20~39 years old, foreign born patients

	Pulmonary tuberculosis patients									
	Total	Sputum-smear positive					Other bacteriologically positive	Bacteriologically negative and others		
		New	Retreatment							
New pulmonary tuberculosis patients	586	189	11			199		187		
Treatment outcomes (*)										
1. Treatment Success	398	67.9	123	65.1	5	45.5	141	70.9	129	69.0
Cure	84	14.3	37	19.6	0	0.0	20	10.1	27	14.4
Treatment completed	314	53.6	86	45.5	5	45.5	121	60.8	102	54.5
Treatment Completed 1	211	36.0	57	30.2	4	36.4	48	24.1	102	54.5
Treatment Completed 2	103	17.6	29	15.3	1	9.1	73	36.7	0	0.0
2. Died	0	0.0	0	0.0	0	0.0	0	0.0	0	0.0
3. Treatment failed	1	0.2	0	0.0	0	0.0	1	0.5	0	0.0
4. Lost to follow-up	32	5.5	6	3.2	0	0.0	12	6.0	14	7.5
Lost to follow-up 1	8	1.4	2	1.1	0	0.0	1	0.5	5	2.7
Lost to follow-up 2	24	4.1	4	2.1	0	0.0	11	5.5	9	4.8
5. Transfer out	93	15.9	38	20.1	4	36.4	26	13.1	25	13.4
6. Still on treatment	28	4.8	14	7.4	2	18.2	4	2.0	8	4.3
Still on treatment 1	9	1.5	7	3.7	1	9.1	1	0.5	0	0.0
Still on treatment 2	3	0.5	0	0.0	0	0.0	0	0.0	3	1.6
Still on treatment 3	12	2.0	4	2.1	0	0.0	3	1.5	5	2.7
Still on treatment 4	4	0.7	3	1.6	1	9.1	0	0.0	0	0.0
7. Unclassified	34	5.8	8	4.2	0	0.0	15	7.5	11	5.9
Unclassified 1	7	1.2	1	0.5	0	0.0	4	2.0	2	1.1
Unclassified 2	0	0.0	0	0.0	0	0.0	0	0.0	0	0.0
Unclassified 3	7	1.2	2	1.1	0	0.0	2	1.0	3	1.6
Unclassified 4	3	0.5	0	0.0	0	0.0	2	1.0	1	0.5
Unclassified 5	17	2.9	5	2.6	0	0.0	7	3.5	5	2.7

\*Treatment outcomes: See definitions in Table 6.

PTB: pulmonary tuberculosis, INH: isoniazid, RFP: rifampicin

Table 5.1c Treatment outcome of newly notified pulmonary tuberculosis patients by patient classification, 2013 year cohort - 40~59 years old, all PTB patients

	Pulmonary tuberculosis patients									
	Total	Sputum-smear positive				Other bacteriologically positive	Bacteriologically negative and others			
		New	Retreatment							
New pulmonary tuberculosis patients	2,568	1,108	81			892			487	
Treatment outcomes (*)										
1. Treatment Success	1782	69.4	775	69.9	48	59.3	629	70.5	330	67.8
Cure	521	20.3	321	29.0	21	25.9	126	14.1	53	10.9
Treatment completed	1261	49.1	454	41.0	27	33.3	503	56.4	277	56.9
Treatment Completed 1	847	33.0	340	30.7	17	21.0	213	23.9	277	56.9
Treatment Completed 2	414	16.1	114	10.3	10	12.3	290	32.5	0	0.0
2. Died	73	2.8	50	4.5	3	3.7	16	1.8	4	0.8
3. Treatment failed	10	0.4	9	0.8	0	0.0	1	0.1	0	0.0
4. Lost to follow-up	180	7.0	38	3.4	3	3.7	80	9.0	59	12.1
Lost to follow-up 1	60	2.3	15	1.4	2	2.5	24	2.7	19	3.9
Lost to follow-up 2	120	4.7	23	2.1	1	1.2	56	6.3	40	8.2
5. Transfer out	98	3.8	42	3.8	6	7.4	32	3.6	18	3.7
6. Still on treatment	226	8.8	116	10.5	10	12.3	80	9.0	20	4.1
Still on treatment 1	62	2.4	28	2.5	3	3.7	26	2.9	5	1.0
Still on treatment 2	42	1.6	18	1.6	1	1.2	17	1.9	6	1.2
Still on treatment 3	79	3.1	47	4.2	3	3.7	21	2.4	8	1.6
Still on treatment 4	43	1.7	23	2.1	3	3.7	16	1.8	1	0.2
7. Unclassified	199	7.7	78	7.0	11	13.6	54	6.1	56	11.5
Unclassified 1	22	0.9	7	0.6	1	1.2	9	1.0	5	1.0
Unclassified 2	9	0.4	9	0.8	0	0.0	0	0.0	0	0.0
Unclassified 3	48	1.9	20	1.8	5	6.2	8	0.9	15	3.1
Unclassified 4	14	0.5	3	0.3	0	0.0	4	0.4	7	1.4
Unclassified 5	106	4.1	39	3.5	5	6.2	33	3.7	29	6.0

\*Treatment outcomes: See definitions in Table 6.

PTB: pulmonary tuberculosis, INH: isoniazid, RFP: rifampicin

Table 5.2c Treatment outcome of newly notified pulmonary tuberculosis patients by patient classification, 2013 year cohort - 40~59 years old, foreign born patients

	Pulmonary tuberculosis patients									
	Total	Sputum-smear positive				Other bacteriologically positive	Bacteriologically negative and others			
		New	Retreatment							
New pulmonary tuberculosis patients	150	53	5			53	39			
Treatment outcomes (*)										
1. Treatment Success	90	60.0	31	58.5	2	40.0	35	66.0	22	56.4
Cure	20	13.3	11	20.8	1	20.0	4	7.5	4	10.3
Treatment completed	70	46.7	20	37.7	1	20.0	31	58.5	18	46.2
Treatment Completed 1	44	29.3	14	26.4	1	20.0	11	20.8	18	46.2
Treatment Completed 2	26	17.3	6	11.3	0	0.0	20	37.7	0	0.0
2. Died	2	1.3	1	1.9	1	20.0	0	0.0	0	0.0
3. Treatment failed	1	0.7	1	1.9	0	0.0	0	0.0	0	0.0
4. Lost to follow-up	12	8.0	2	3.8	0	0.0	6	11.3	4	10.3
Lost to follow-up 1	3	2.0	1	1.9	0	0.0	2	3.8	0	0.0
Lost to follow-up 2	9	6.0	1	1.9	0	0.0	4	7.5	4	10.3
5. Transfer out	15	10.0	8	15.1	1	20.0	2	3.8	4	10.3
6. Still on treatment	13	8.7	6	11.3	1	20.0	5	9.4	1	2.6
Still on treatment 1	5	3.3	2	3.8	0	0.0	3	5.7	0	0.0
Still on treatment 2	2	1.3	1	1.9	0	0.0	1	1.9	0	0.0
Still on treatment 3	3	2.0	1	1.9	0	0.0	1	1.9	1	2.6
Still on treatment 4	3	2.0	2	3.8	1	20.0	0	0.0	0	0.0
7. Unclassified	17	11.3	4	7.5	0	0.0	5	9.4	8	20.5
Unclassified 1	2	1.3	0	0.0	0	0.0	2	3.8	0	0.0
Unclassified 2	2	1.3	2	3.8	0	0.0	0	0.0	0	0.0
Unclassified 3	6	4.0	0	0.0	0	0.0	1	1.9	5	12.8
Unclassified 4	0	0.0	0	0.0	0	0.0	0	0.0	0	0.0
Unclassified 5	7	4.7	2	3.8	0	0.0	2	3.8	3	7.7

\*Treatment outcomes: See definitions in Table 6.

PTB: pulmonary tuberculosis, INH: isoniazid, RFP: rifampicin

Table 5.1d Treatment outcome of newly notified pulmonary tuberculosis patients by patient classification, 2013 year cohort - 70~ years old, all PTB patients

	Pulmonary tuberculosis patients									
	Total	Sputum-smear positive					Other bacteriologically positive	Bacteriologically negative and others		
		New	Retreatment							
New pulmonary tuberculosis patients	11,045	5,710	412				3,766	1,157		
Treatment outcomes (*)										
1. Treatment Success	5035	45.6	2418	42.3	154	37.4	1876	49.8	587	50.7
Cure	1418	12.8	869	15.2	59	14.3	402	10.7	88	7.6
Treatment completed	3617	32.7	1549	27.1	95	23.1	1474	39.1	499	43.1
Treatment Completed 1	2477	22.4	1159	20.3	70	17.0	749	19.9	499	43.1
Treatment Completed 2	1140	10.3	390	6.8	25	6.1	725	19.3	0	0.0
2. Died	2555	23.1	1586	27.8	111	26.9	685	18.2	173	15.0
3. Treatment failed	47	0.4	31	0.5	4	1.0	10	0.3	2	0.2
4. Lost to follow-up	763	6.9	261	4.6	22	5.3	351	9.3	129	11.1
Lost to follow-up 1	220	2.0	109	1.9	7	1.7	77	2.0	27	2.3
Lost to follow-up 2	543	4.9	152	2.7	15	3.6	274	7.3	102	8.8
5. Transfer out	202	1.8	122	2.1	12	2.9	45	1.2	23	2.0
6. Still on treatment	1123	10.2	673	11.8	59	14.3	310	8.2	81	7.0
Still on treatment 1	205	1.9	119	2.1	14	3.4	57	1.5	15	1.3
Still on treatment 2	166	1.5	98	1.7	5	1.2	52	1.4	11	1.0
Still on treatment 3	496	4.5	315	5.5	34	8.3	113	3.0	34	2.9
Still on treatment 4	256	2.3	141	2.5	6	1.5	88	2.3	21	1.8
7. Unclassified	1320	12.0	619	10.8	50	12.1	489	13.0	162	14.0
Unclassified 1	395	3.6	157	2.7	7	1.7	194	5.2	37	3.2
Unclassified 2	77	0.7	47	0.8	4	1.0	21	0.6	5	0.4
Unclassified 3	413	3.7	235	4.1	17	4.1	118	3.1	43	3.7
Unclassified 4	69	0.6	30	0.5	5	1.2	23	0.6	11	1.0
Unclassified 5	366	3.3	150	2.6	17	4.1	133	3.5	66	5.7

\*Treatment outcomes: See definitions in Table 6.

PTB: pulmonary tuberculosis, INH: isoniazid, RFP: rifampicin



Table 5.2d Treatment outcome of newly notified pulmonary tuberculosis patients by patient classification, 2013 year cohort - 70~ years old, foreign born patients

	Pulmonary tuberculosis patients									
	Total	Sputum-smear positive					Other bacteriologically positive	Bacteriologically negative and others		
		New	Retreatment							
New pulmonary tuberculosis patients	65	34	2			20	9			
Treatment outcomes (*)										
1. Treatment Success	22	33.8	10	29.4	0	0.0	8	40.0	4	44.4
Cure	6	9.2	2	5.9	0	0.0	4	20.0	0	0.0
Treatment completed	16	24.6	8	23.5	0	0.0	4	20.0	4	44.4
Treatment Completed 1	12	18.5	4	11.8	0	0.0	4	20.0	4	44.4
Treatment Completed 2	4	6.2	4	11.8	0	0.0	0	0.0	0	0.0
2. Died	12	18.5	7	20.6	1	50.0	3	15.0	1	11.1
3. Treatment failed	1	1.5	1	2.9	0	0.0	0	0.0	0	0.0
4. Lost to follow-up	5	7.7	1	2.9	0	0.0	4	20.0	0	0.0
Lost to follow-up 1	2	3.1	0	0.0	0	0.0	2	10.0	0	0.0
Lost to follow-up 2	3	4.6	1	2.9	0	0.0	2	10.0	0	0.0
5. Transfer out	10	15.4	9	26.5	0	0.0	0	0.0	1	11.1
6. Still on treatment	9	13.8	3	8.8	0	0.0	4	20.0	2	22.2
Still on treatment 1	2	3.1	0	0.0	0	0.0	1	5.0	1	11.1
Still on treatment 2	1	1.5	1	2.9	0	0.0	0	0.0	0	0.0
Still on treatment 3	6	9.2	2	5.9	0	0.0	3	15.0	1	11.1
Still on treatment 4	0	0.0	0	0.0	0	0.0	0	0.0	0	0.0
7. Unclassified	6	9.2	3	8.8	1	50.0	1	5.0	1	11.1
Unclassified 1	1	1.5	0	0.0	1	50.0	0	0.0	0	0.0
Unclassified 2	0	0.0	0	0.0	0	0.0	0	0.0	0	0.0
Unclassified 3	3	4.6	2	5.9	0	0.0	0	0.0	1	11.1
Unclassified 4	1	1.5	0	0.0	0	0.0	1	5.0	0	0.0
Unclassified 5	1	1.5	1	2.9	0	0.0	0	0.0	0	0.0

\*Treatment outcomes: See definitions in Table 6.

PTB: pulmonary tuberculosis, INH: isoniazid, RFP: rifampicin

Table 5.1e Treatment outcome of newly notified pulmonary tuberculosis patients by patient classification, 2013 year cohort  
DM all PTB patients

	Pulmonary tuberculosis patients									
	Total	Sputum-smear positive					Other bacteriologically positive	Bacteriologically negative and others		
		New	Retreatment							
New pulmonary tuberculosis patients	2,360	1,393	73			683		211		
Treatment outcomes (*)										
1. Treatment Success	1065	45.1	590	42.4	30	41.1	341	49.9	104	49.3
Cure	299	12.7	203	14.6	9	12.3	73	10.7	14	6.6
Treatment completed	766	32.5	387	27.8	21	28.8	268	39.2	90	42.7
Treatment Completed 1	542	23.0	294	21.1	18	24.7	140	20.5	90	42.7
Treatment Completed 2	224	9.5	93	6.7	3	4.1	128	18.7	0	0.0
2. Died	493	20.9	318	22.8	19	26.0	116	17.0	40	19.0
3. Treatment failed	16	0.7	11	0.8	1	1.4	3	0.4	1	0.5
4. Lost to follow-up	130	5.5	65	4.7	1	1.4	49	7.2	15	7.1
Lost to follow-up 1	51	2.2	31	2.2	0	0.0	15	2.2	5	2.4
Lost to follow-up 2	79	3.3	34	2.4	1	1.4	34	5.0	10	4.7
5. Transfer out	62	2.6	42	3.0	4	5.5	12	1.8	4	1.9
6. Still on treatment	376	15.9	246	17.7	11	15.1	97	14.2	22	10.4
Still on treatment 1	51	2.2	39	2.8	2	2.7	7	1.0	3	1.4
Still on treatment 2	61	2.6	37	2.7	1	1.4	21	3.1	2	0.9
Still on treatment 3	184	7.8	120	8.6	8	11.0	42	6.1	14	6.6
Still on treatment 4	80	3.4	50	3.6	0	0.0	27	4.0	3	1.4
7. Unclassified	218	9.2	121	8.7	7	9.6	65	9.5	25	11.8
Unclassified 1	43	1.8	21	1.5	3	4.1	16	2.3	3	1.4
Unclassified 2	9	0.4	7	0.5	0	0.0	2	0.3	0	0.0
Unclassified 3	54	2.3	33	2.4	2	2.7	12	1.8	7	3.3
Unclassified 4	8	0.3	6	0.4	0	0.0	0	0.0	2	0.9
Unclassified 5	104	4.4	54	3.9	2	2.7	35	5.1	13	6.2

\*Treatment outcomes: See definitions in Table 6.

PTB: pulmonary tuberculosis, INH: isoniazid, RFP: rifampicin

Table 5.2e Treatment outcome of newly notified pulmonary tuberculosis patients by patient classification, 2013 year cohort  
DM foreign born patients

	Pulmonary tuberculosis patients									
	Total	Sputum-smear positive					Other bacteriologically positive	Bacteriologically negative and others		
		New	Retreatment							
New pulmonary tuberculosis patients	55	37	1			8				9
Treatment outcomes (*)										
1. Treatment Success	22	40.0	13	35.1	0	0.0	5	62.5	4	44.4
Cure	5	9.1	2	5.4	0	0.0	3	37.5	0	0.0
Treatment completed	17	30.9	11	29.7	0	0.0	2	25.0	4	44.4
Treatment Completed 1	12	21.8	7	18.9	0	0.0	1	12.5	4	44.4
Treatment Completed 2	5	9.1	4	10.8	0	0.0	1	12.5	0	0.0
2. Died	5	9.1	4	10.8	0	0.0	1	12.5	0	0.0
3. Treatment failed	0	0.0	0	0.0	0	0.0	0	0.0	0	0.0
4. Lost to follow-up	2	3.6	2	5.4	0	0.0	0	0.0	0	0.0
Lost to follow-up 1	1	1.8	1	2.7	0	0.0	0	0.0	0	0.0
Lost to follow-up 2	1	1.8	1	2.7	0	0.0	0	0.0	0	0.0
5. Transfer out	14	25.5	12	32.4	0	0.0	0	0.0	2	22.2
6. Still on treatment	6	10.9	3	8.1	0	0.0	1	12.5	2	22.2
Still on treatment 1	2	3.6	2	5.4	0	0.0	0	0.0	0	0.0
Still on treatment 2	0	0.0	0	0.0	0	0.0	0	0.0	0	0.0
Still on treatment 3	4	7.3	1	2.7	0	0.0	1	12.5	2	22.2
Still on treatment 4	0	0.0	0	0.0	0	0.0	0	0.0	0	0.0
7. Unclassified	6	10.9	3	8.1	1	100.0	1	12.5	1	11.1
Unclassified 1	1	1.8	0	0.0	1	100.0	0	0.0	0	0.0
Unclassified 2	1	1.8	1	2.7	0	0.0	0	0.0	0	0.0
Unclassified 3	1	1.8	0	0.0	0	0.0	1	12.5	0	0.0
Unclassified 4	0	0.0	0	0.0	0	0.0	0	0.0	0	0.0
Unclassified 5	3	5.5	2	5.4	0	0.0	0	0.0	1	11.1

\*Treatment outcomes: See definitions in Table 6.

PTB: pulmonary tuberculosis, INH: isoniazid, RFP: rifampicin

**Table 6 Treatment outcomes of newly notified patients with sputum–smear positive pulmonary tuberculosis, 2007–2013 year cohorts, %**

Treatment outcomes	Definition								
		n=	2007	2008	2009	2010	2011	2012	2013
		9,421	8,999	8,772	8,242	7,736	7,694	7,600	
1. <b>Cure</b>	A patient who completed treatment within 12 months and whose sputum culture tests were negative at least two times (one of the negative culture results was within three months before the completion of treatment).	16.9	17.6	20.7	20.1	20.0	18.4	18.6	
2. <b>Treatment completed 1</b>	A patient who completed treatment within 12 months but had only one negative sputum culture result.	24.9	26.8	27.2	27.4	20.7	20.9	22.9	
3. <b>Treatment completed 2</b>	A patient who completed treatment within 12 months but did not have a negative sputum culture result.	3.8	3.4	3.9	4.5	9.9	10.1	8.0	
4. <b>Died</b>	A patient who died for any reason during the course of treatment.	18.4	19.1	19.3	20.8	21.6	22.6	21.6	
5. <b>Treatment failed</b>	A patient whose sputum culture was positive at 5 months or later during the course of treatment.	1.0	1.1	0.9	0.7	0.7	0.7	0.6	
6. <b>Lost to follow-up 1</b>	A patient whose treatment was interrupted for 60 days (or two consecutive months) or more.	0.7	0.6	0.8	0.6	1.1	1.4	1.7	
7. <b>Lost to follow-up 2</b>	A patient whose treatment was stopped by physician's instruction before completing standard treatment.	4.3	3.2	2.9	2.3	2.2	2.3	2.7	
8. <b>Transfer out</b>	A patient who has been transferred out of the region where the patient was initially registered.	3.2	2.8	3.3	3.0	3.2	3.0	3.2	
9. <b>Still on treatment 1</b>	A patient who stopped INH and/or RFP and was still on treatment after 12 months.	1.7	1.4	2.0	1.6	1.8	1.9	2.2	
10. <b>Still on treatment 2*</b>	A patient who has been on treatment with INH and/or RFP and was still on treatment after 12 months due possibly to treatment interruption.	10.3	10.5	8.8	8.3	1.3	1.4	1.6	
11. <b>Still on treatment 3</b>	A patient who has been on treatment with INH and/or RFP and was still on treatment after 12 months without treatment interruption.					4.1	4.0	5.0	
12. <b>Still on treatment 4</b>	A patient who has been on treatment with INH and/or RFP and was still on treatment after 12 months due to unknown reasons.					3.9	3.2	2.3	
13. <b>Unclassified 1</b>	A patient who did not start tuberculosis treatment (due mostly to early death).	1.9	2.2	2.1	2.1	0.7	2.4	2.2	
14. <b>Unclassified 2</b>	A patient whose initial treatment regimen was unknown.	4.3	3.9	1.4	1.2	1.0	0.6	0.8	
15. <b>Unclassified 3</b>	A patient whose treatment regimen was other than the standard.	2.5	2.7	2.5	2.7	4.1	3.6	3.4	
16. <b>Unclassified 4</b>	A patient who stopped INH and/or RFP but completed treatment within 12 months.	1.1	1.1	1.3	1.1	0.4	0.4	0.4	
17. <b>Unclassified 5</b>	A patient whose information was insufficient for classifying treatment outcome.	5.1	3.8	2.9	3.5	3.1	3.1	2.8	

\*There were two categories of "Still on treatment" until 2010 cohorts. Since 2011, the categories have been divided into four kinds as indicated. INH: isoniazid, RFP: rifampicin

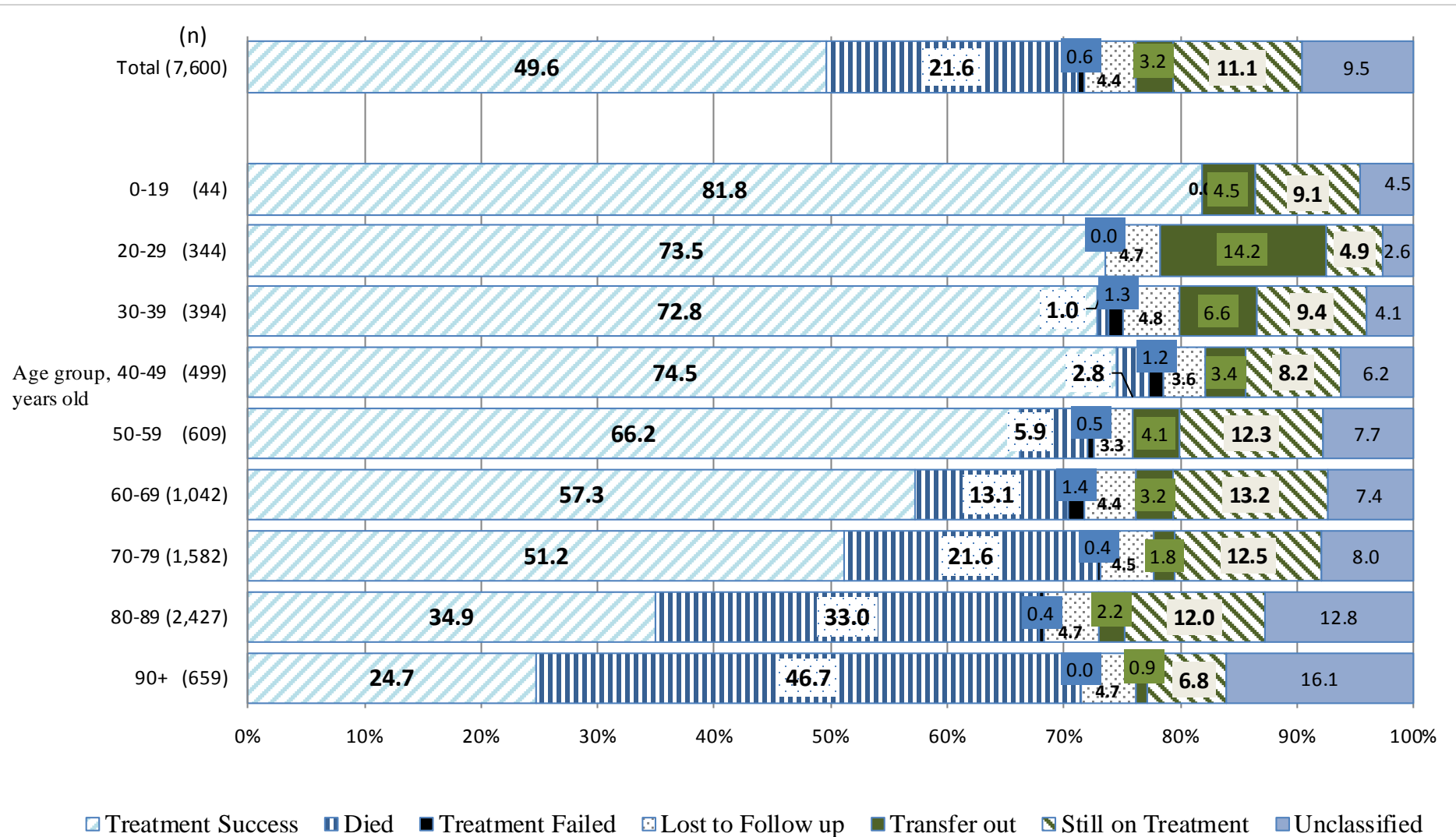


Fig. 3 Treatment outcomes of newly notified sputum-smear positive pulmonary tuberculosis patients by age group, 2013 year cohort (%)

Table 7 Patients deleted from tuberculosis registration by the end of years (in 2013 and in 2014)  
 - Patients with tuberculosis patients and LTBI notified in the previous years (in 2012 and in 2013, respectively) -

	Newly notified patients with tuberculosis												Patients with LTBI (Not included in the total) (%)			
	Total (%)	Patients with pulmonary tuberculosis										Patients with extra-pulmonary tuberculosis (%)				
		Sub-total (pulmonary tuberculosis) (%)	Sputum-smear positive				Other bacteriologically positive (%)	Bacteriologically negative and others (%)								
			New (%)	Re-treatment (%)												
<b>Newly notified tuberculosis cases in 2012*</b>	<b>21,221</b>	<b>(100)</b>	<b>16,411</b>	<b>(100)</b>	<b>7,694</b>	<b>(100)</b>	<b>579</b>	<b>(100)</b>	<b>5,656</b>	<b>(100)</b>	<b>2,482</b>	<b>(100)</b>	<b>4,810</b>	<b>(100)</b>	<b>8,768</b>	<b>(100)</b>
Total number of patients deleted from tuberculosis registration by the end of 2012	6,244	(29.4)	4,947	(30.1)	2,822	(36.7)	185	(32.0)	1,466	(25.9)	474	(19.1)	1,297	(27.0)	880	(10.0)
No need for post-treatment follow-up	84	(0.4)	38	(0.2)	6	(0.1)	1	(0.2)	11	(0.2)	20	(0.8)	46	(1.0)	206	(2.3)
Died	4,989	(23.5)	3,948	(24.1)	2,406	(31.3)	145	(25.0)	1,137	(20.1)	260	(10.5)	1,041	(21.6)	77	(0.9)
Tuberculosis-related death	1,490	(7.0)	1,265	(7.7)	961	(12.5)	64	(11.1)	194	(3.4)	46	(1.9)	225	(4.7)	1	(0.0)
Other causes of death	3,499	(16.5)	2,683	(16.3)	1,445	(18.8)	81	(14.0)	943	(16.7)	214	(8.6)	816	(17.0)	76	(0.9)
Transfer out	1,001	(4.7)	827	(5.0)	360	(4.7)	27	(4.7)	265	(4.7)	175	(7.1)	174	(3.6)	506	(5.8)
Register during follow-up	133	(0.6)	107	(0.7)	45	(0.6)	9	(1.6)	41	(0.7)	12	(0.5)	26	(0.5)	41	(0.5)
Other reasons	37	(0.2)	27	(0.2)	5	(0.1)	3	(0.5)	12	(0.2)	7	(0.3)	10	(0.2)	50	(0.6)
<b>Newly notified tuberculosis cases in 2013**</b>	<b>20,435</b>	<b>(100)</b>	<b>15,941</b>	<b>(100)</b>	<b>7,600</b>	<b>(100)</b>	<b>529</b>	<b>(100)</b>	<b>5,478</b>	<b>(100)</b>	<b>2,334</b>	<b>(100)</b>	<b>4,494</b>	<b>(100)</b>	<b>7,129</b>	<b>(100)</b>
Total number of patients deleted from tuberculosis registration by the end of 2013	6,064	(29.7)	4,858	(30.5)	2,728	(35.9)	190	(35.9)	1,472	(26.9)	468	(20.1)	1,206	(26.8)	725	(10.2)
No need for post-treatment follow-up	41	(0.2)	14	(0.1)	4	(0.1)	0	(0.0)	2	(0.0)	8	(0.3)	27	(0.6)	112	(1.6)
Died	4,868	(23.8)	3,864	(24.2)	2,287	(30.1)	147	(27.8)	1,151	(21.0)	279	(12.0)	1,004	(22.3)	116	(1.6)
Tuberculosis-related death	1,433	(7.0)	1,211	(7.6)	921	(12.1)	55	(10.4)	184	(3.4)	51	(2.2)	222	(4.9)	0	(0.0)
Other causes of death	3,435	(16.8)	2,653	(16.6)	1,366	(18.0)	92	(17.4)	967	(17.7)	228	(9.8)	782	(17.4)	116	(1.6)
Transfer out	1,003	(4.9)	848	(5.3)	374	(4.9)	36	(6.8)	274	(5.0)	164	(7.0)	155	(3.4)	389	(5.5)
Register during follow-up	127	(0.6)	111	(0.7)	57	(0.8)	6	(1.1)	36	(0.7)	12	(0.5)	16	(0.4)	72	(1.0)
Other reasons	25	(0.1)	21	(0.1)	6	(0.1)	1	(0.2)	9	(0.2)	5	(0.2)	4	(0.1)	36	(0.5)

\* Based on the annual report database in 2013. \*\* Based on the annual report database in 2014.

LTBI : Latent Tuberculosis Infection

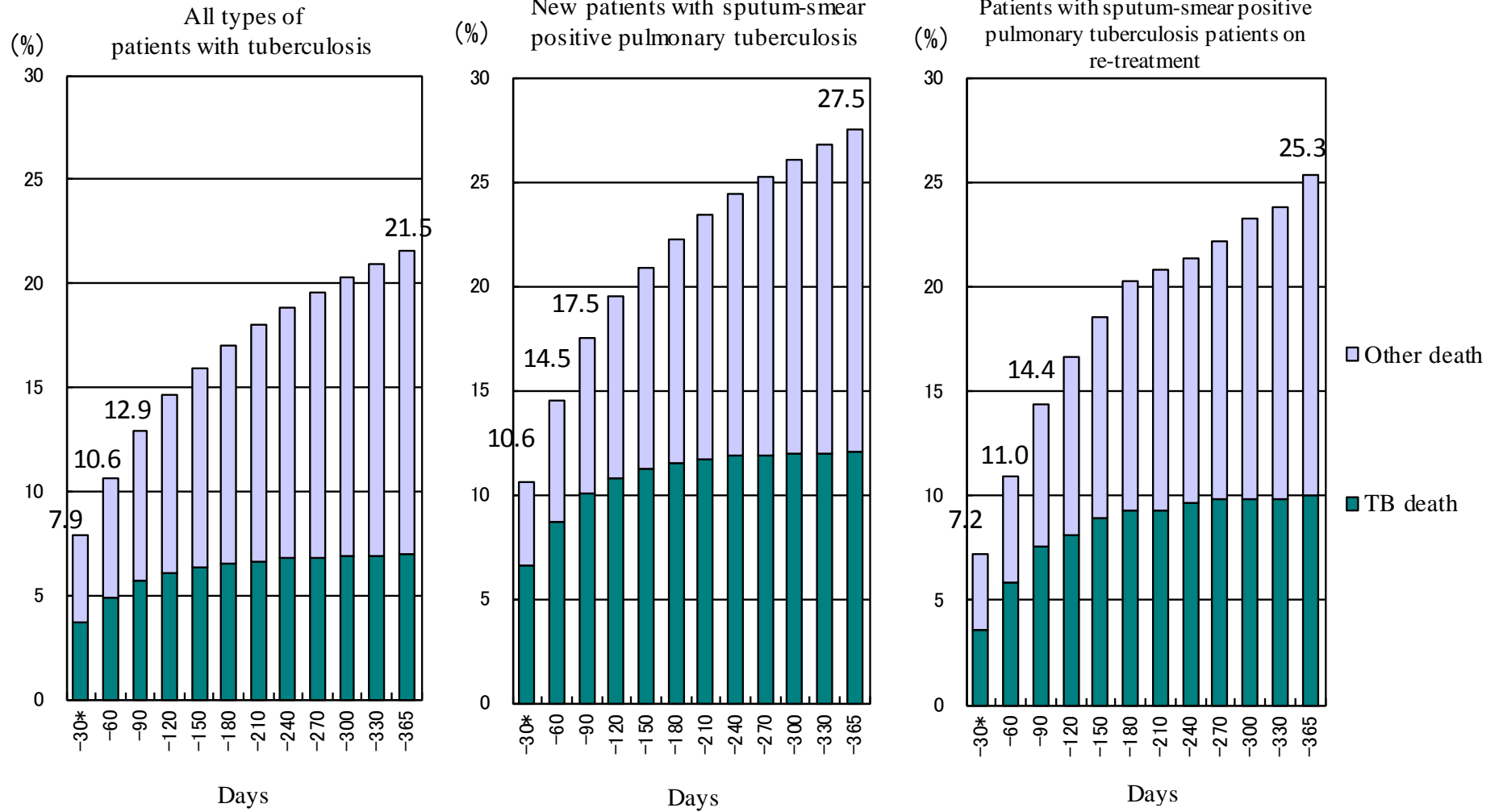


Fig. 4 Cumulative proportion of deaths by duration of treatment - Newly notified patients with tuberculosis in 2013

\* Includes patients who died before the commencement of treatment.

TB: tuberculosis