

【Summary】

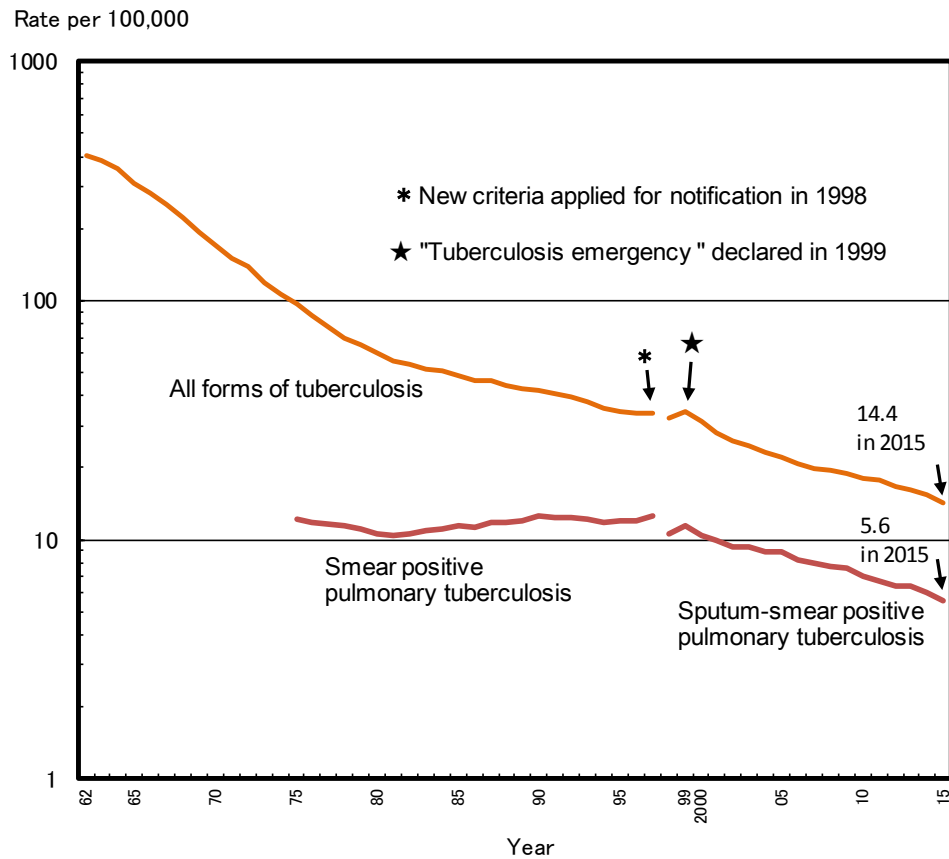


Fig. 1 Annual trend of tuberculosis notification rate (all forms, sputum-smear positive pulmonary tuberculosis) per 100,000 population in Japan, 1962-2015

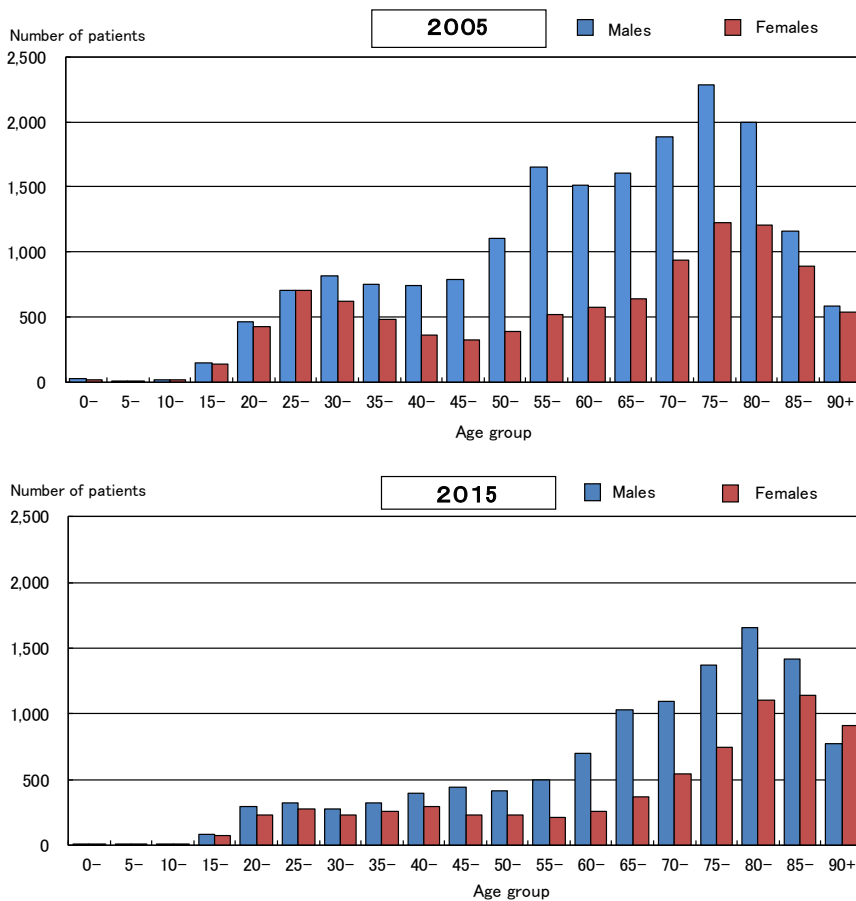


Fig. 2 Age distribution of newly notified tuberculosis patients by sex in Japan, in 2005 and in 2015

Table 1 Number of newly notified tuberculosis patients (all forms, new and re-treatment, pulmonary and extra-pulmonary), by age group, in Japan, 2012–2015

Age group	New tuberculosis																				Re-treatment tuberculosis																											
	Pulmonary tuberculosis										Extra-pulmonary tuberculosis										Pulmonary tuberculosis										Extra-pulmonary tuberculosis																	
	Sputum-smear positive					Sputum-smear negative					Sputum-smear positive					Sputum-smear negative					Sputum-smear positive					Sputum-smear negative					Sputum-smear positive					Sputum-smear negative												
	2012	2013	2014	2015	Rate	2012	2013	2014	2015	Rate	2012	2013	2014	2015	Rate	2012	2013	2014	2015	Rate	2012	2013	2014	2015	Rate	2012	2013	2014	2015	Rate	2012	2013	2014	2015	Rate	2012	2013	2014	2015	Rate								
Total	21,283	20,495	19,615	18,280	16.7	16.1	15.4	14.4	7,663	7,584	7,153	6,676	5,350	5,174	4,937	4,819	2,132	2,041	1,918	1,638	193	160	173	139	4,609	4,274	4,255	3,976	574	535	498	455	336	296	296	264	162	163	157	119	22	19	17	13	242	249	211	181
0-14	63	66	49	51	0.4	0.4	0.3	0.3	4	0	1	2	4	14	11	12	30	26	18	17	6	1	4	2	16	20	13	16	1	0	0	0	0	1	0	0	1	3	1	1	0	0	0	1	1	1	1	0
15-19	165	165	168	163	2.7	2.7	2.8	2.8	38	44	31	40	40	37	54	47	46	45	50	37	4	4	4	3	23	21	15	29	2	5	5	1	5	1	3	2	4	5	5	3	2	1	1	0	1	2	0	1
20-29	1,288	1,196	1,188	1,127	9.7	9.1	9.2	9.0	320	345	321	277	387	346	356	378	304	302	277	271	23	15	18	12	188	144	164	151	17	12	8	15	18	16	15	12	16	7	20	9	2	2	1	0	13	7	8	2
30-39	1,528	1,317	1,235	1,101	8.9	7.9	7.7	7.1	423	393	323	327	439	379	371	313	310	261	255	202	19	17	16	12	258	200	202	192	25	19	18	21	19	13	14	20	14	15	12	2	2	1	2	0	19	19	22	12
40-49	1,600	1,496	1,440	1,363	9.1	8.3	7.8	7.5	514	495	453	426	428	418	416	396	244	227	229	188	22	16	20	20	286	266	234	243	41	28	27	28	28	12	18	22	13	10	19	15	1	2	0	4	23	22	24	21
50-59	1,795	1,665	1,514	1,351	11.5	10.8	9.8	8.8	631	606	550	501	462	429	366	357	239	207	187	156	23	15	24	14	323	270	277	234	49	57	47	34	28	34	23	26	21	18	21	5	3	3	3	3	16	26	16	21
60-69	3,012	2,833	2,597	2,359	16.3	15.4	14.3	13.1	1,083	1,045	936	858	742	716	656	616	306	283	253	241	38	29	23	20	644	556	547	476	78	74	74	77	55	41	52	26	33	41	23	19	5	5	2	3	28	43	31	23
70-79	4,595	4,359	4,028	3,757	33.7	31.4	28.4	26.9	1,657	1,572	1,465	1,323	1,082	1,064	961	966	333	340	297	257	33	30	30	26	1,163	1,081	1,017	974	144	110	113	85	80	75	65	58	27	29	32	28	5	4	4	1	71	54	44	39
80-89	5,753	5,856	5,753	5,317	77.6	76.2	72.5	66.0	2,339	2,426	2,389	2,194	1,400	1,392	1,309	1,289	261	290	290	216	23	32	30	23	1,357	1,354	1,401	1,280	193	184	168	153	87	85	85	81	28	29	20	28	2	1	4	1	63	63	57	52
90+	1,484	1,542	1,643	1,691	97.1	95.6	95.7	92.0	654	658	684	728	366	379	437	445	59	60	62	53	2	1	4	7	351	362	385	381	24	46	38	41	16	18	21	17	5	6	4	9	0	0	0	0	7	12	8	10

\*1: All forms include new and re-treatment tuberculosis patients.

\*2: Rate per 100,000 population

Table 2 Newly notified latent tuberculosis infection (LTBI) patients, by sex and age group, in Japan, from 2013 to 2015

Age group	2013						2014						2015					
	Total	Sex		Ratio of F/M	%	Ratio of F/M	Total	Sex		Ratio of F/M	%	Ratio of F/M	Total	Sex		Ratio of F/M	%	Ratio of F/M
		Males	Females					Males	Females					Males	Females			
Total	7,147	3,094	4,053	100	1.3	7,562	3,448	4,114	100	1.2	6,675	3,046	3,629	100	1.2	6,675	3,046	3,629
0-4	493	246	247	6.9	1.0	514	247	267	6.8	1.1	420	182	238	6.3	1.3	420	182	238
5-9	163	75	88	2.3	1.2	140	62	78	1.9	1.3	131	67	64	2.0	1.0	131	67	64
10-14	202	97	105	2.8	1.1	86	45	41	1.1	0.9	110	59	51	1.6	0.9	110	59	51
15-19	188	97	91	2.6	0.9	173	83	90	2.3	1.1	124	55	69	1.9	1.3	124	55	69
20-24	426	147	279	6.0	1.9	479	195	284	6.3	1.5	342	138	204	5.1	1.5	342	138	204
25-29	621	251	370	8.7	1.5	538	224	314	7.1	1.4	404	169	235	6.1	1.4	404	169	235
30-34	564	218	346	7.9	1.6	555	238	317	7.3	1.3	444	189	255	6.7	1.3	444	189	255
35-39	638	258	380	8.9	1.5	607	267	340	8.0	1.3	489	193	296	7.3	1.5	489	193	296
40-44	649	259	390	9.1	1.5	681	266	415	9.0	1.6	499	210	289	7.5	1.4	499	210	289
45-49	637	255	382	8.9	1.5	666	299	367	8.8	1.2	543	216	327	8.1	1.5	543	216	327
50-54	600	222	378	8.4	1.7	602	237	365	8.0	1.5	543	222	321	8.1	1.4	543	222	321
55-59	573	229	344	8.0	1.5	610	274	336	8.1	1.2	520	247	273	7.8	1.1	520	247	273
60-64	498	250	248	7.0	1.0	618	298	320	8.2	1.1	497	243	254	7.4	1.0	497	243	254
65-69	321	169	152	4.5	0.9	432	248	184	5.7	0.7	523	280	243	7.8	0.9	523	280	243
70+	574	321	253	8.0	0.8	861	465	396	11.4	0.9	1,086	576	510	16.3	0.9	1,086	576	510

Ratio of F/M: Ratio of female patients to male patients

#: proportion

Table 3.1 Newly notified tuberculosis patients by affected organ, sex and age group, in Japan, from 1998 to 2015

Sex, Age-group, in 2015	Tuberculosis notifications, all forms	Pulmonary tuberculosis				Extra-pulmonary tuberculosis																
		Lungs	Bronchi	Pharynx / Larynx	Miliary	Pleurals	Empyema	Hilar + Mediastinal lymph node	Other lymph nodes	Meninges	Intestines	Vertebrae	Other joints / bones	Kidneys / Urinary tracts	Genitals	Skins	Eyes	Ears	Peritoneum	Pericardium	Other organs	
Total	18,280	14,581 (79.8)	119 (0.7)	43 (0.2)	631 (3.5)	3,277 (17.9)	46 (0.3)	128 (0.7)	813 (4.4)	166 (0.9)	248 (1.4)	192 (1.1)	98 (0.5)	73 (0.4)	21 (0.1)	87 (0.5)	20 (0.1)	19 (0.1)	176 (1.0)	69 (0.4)	134 (0.7)	
Male	11,124	9,125 (82.0)	46 (0.4)	14 (0.1)	231 (2.1)	2,272 (20.4)	34 (0.3)	68 (0.6)	271 (2.4)	101 (0.9)	111 (1.0)	87 (0.8)	50 (0.4)	44 (0.4)	14 (0.1)	29 (0.3)	8 (0.1)	6 (0.1)	78 (0.7)	46 (0.4)	67 (0.6)	
Female	7,156	5,456 (76.2)	73 (1.0)	29 (0.4)	400 (5.6)	1,005 (14.0)	12 (0.2)	60 (0.8)	542 (7.6)	65 (0.9)	137 (1.9)	105 (1.5)	48 (0.7)	29 (0.4)	7 (0.1)	58 (0.8)	12 (0.2)	13 (0.2)	98 (1.4)	23 (0.3)	67 (0.9)	
0-14	51	36 (70.6)	0 (0.0)	1 (2.0)	1 (2.0)	4 (7.8)	0 (0.0)	11 (21.6)	2 (3.9)	1 (2.0)	0 (0.0)	1 (2.0)	2 (3.9)	0 (0.0)	0 (0.0)	1 (2.0)	0 (0.0)	1 (2.0)	1 (2.0)	0 (0.0)	2 (3.9)	
15-19	163	134 (82.2)	1 (0.6)	1 (0.6)	1 (0.6)	21 (12.9)	0 (0.0)	1 (0.6)	8 (4.9)	3 (1.8)	2 (1.2)	1 (0.6)	0 (0.0)	0 (0.0)	1 (0.6)	1 (0.6)	1 (0.6)	0 (0.0)	1 (0.6)	1 (0.6)	1 (0.6)	
20-29	1,127	980 (87.0)	14 (1.2)	5 (0.4)	11 (1.0)	125 (11.1)	1 (0.1)	18 (1.6)	65 (5.8)	7 (0.6)	13 (1.2)	5 (0.4)	3 (0.3)	0 (0.0)	1 (0.1)	2 (0.2)	3 (0.3)	4 (0.4)	6 (0.5)	0 (0.0)	9 (0.8)	
30-39	1,101	905 (82.2)	8 (0.7)	5 (0.5)	8 (0.7)	140 (12.7)	2 (0.2)	13 (1.2)	83 (7.5)	10 (0.9)	23 (2.1)	8 (0.7)	3 (0.3)	4 (0.4)	0 (0.0)	5 (0.5)	1 (0.1)	2 (0.2)	8 (0.7)	0 (0.0)	12 (1.1)	
40-49	1,363	1,121 (82.2)	13 (1.0)	5 (0.4)	24 (1.8)	158 (11.6)	6 (0.4)	17 (1.2)	79 (5.8)	21 (1.5)	31 (2.3)	9 (0.7)	6 (0.4)	6 (0.4)	0 (0.0)	2 (0.1)	3 (0.2)	3 (0.2)	8 (0.6)	2 (0.1)	18 (1.3)	
50-59	1,351	1,105 (81.8)	11 (0.8)	5 (0.4)	17 (1.3)	172 (12.7)	5 (0.4)	8 (0.6)	80 (5.9)	19 (1.4)	27 (2.0)	11 (0.8)	5 (0.4)	8 (0.6)	1 (0.1)	5 (0.4)	5 (0.4)	2 (0.1)	13 (1.0)	3 (0.2)	8 (0.6)	
60-69	2,359	1,892 (80.2)	12 (0.5)	4 (0.2)	36 (1.5)	346 (14.7)	6 (0.3)	15 (0.6)	125 (5.3)	35 (1.5)	52 (2.2)	28 (1.2)	13 (0.6)	18 (0.8)	9 (0.4)	8 (0.3)	4 (0.2)	2 (0.1)	19 (0.8)	12 (0.5)	21 (0.9)	
70-79	3,757	2,862 (76.2)	26 (0.7)	7 (0.2)	153 (4.1)	718 (19.1)	8 (0.2)	31 (0.8)	190 (5.1)	25 (0.7)	50 (1.3)	53 (1.4)	22 (0.6)	20 (0.5)	6 (0.2)	27 (0.7)	2 (0.1)	3 (0.1)	56 (1.5)	25 (0.7)	25 (0.7)	
80-89	5,317	4,168 (78.4)	29 (0.5)	9 (0.2)	274 (5.2)	1,176 (22.1)	13 (0.2)	13 (0.2)	160 (3.0)	38 (0.7)	46 (0.9)	61 (1.1)	34 (0.6)	15 (0.3)	3 (0.1)	30 (0.6)	0 (0.0)	2 (0.0)	58 (1.1)	20 (0.4)	30 (0.6)	
90+	1,691	1,378 (81.5)	5 (0.3)	1 (0.1)	106 (6.3)	417 (24.7)	5 (0.3)	1 (0.1)	21 (1.2)	7 (0.4)	4 (0.2)	15 (0.9)	7 (0.4)	2 (0.1)	0 (0.0)	6 (0.4)	1 (0.1)	0 (0.0)	6 (0.4)	6 (0.4)	8 (0.5)	
Year	Total																					
1998	41,033	33,981 (82.8)	-	-	505 (1.2)	5,125 (12.5)	251 (0.6)	136 (0.3)	1,469 (3.6)	154 (0.4)	335 (0.8)	385 (0.9)	328 (0.8)	227 (0.6)	78 (0.2)	100 (0.2)	12 (0.0)	25 (0.1)	-	-	692 (1.7)	
1999	43,818	36,190 (82.6)	-	-	603 (1.4)	5,586 (12.7)	221 (0.5)	143 (0.3)	1,538 (3.5)	163 (0.4)	345 (0.8)	334 (0.8)	300 (0.7)	179 (0.4)	96 (0.2)	94 (0.2)	13 (0.0)	28 (0.1)	-	-	684 (1.6)	
2000	39,384	32,338 (82.1)	-	-	597 (1.5)	5,108 (13.0)	202 (0.5)	123 (0.3)	1,432 (3.6)	158 (0.4)	356 (0.9)	319 (0.8)	272 (0.7)	181 (0.5)	72 (0.2)	123 (0.3)	16 (0.0)	38 (0.1)	-	-	656 (1.7)	
2001	35,489	28,868 (81.3)	-	-	642 (1.8)	4,840 (13.6)	162 (0.5)	102 (0.3)	1,368 (3.9)	177 (0.5)	275 (0.8)	276 (0.8)	274 (0.8)	172 (0.5)	72 (0.2)	104 (0.3)	11 (0.0)	25 (0.1)	-	-	619 (1.7)	
2002	32,828	26,472 (80.6)	-	-	626 (1.9)	4,666 (14.2)	152 (0.5)	84 (0.3)	1,269 (3.9)	188 (0.6)	323 (1.0)	299 (0.9)	222 (0.7)	148 (0.5)	66 (0.2)	100 (0.3)	19 (0.1)	29 (0.1)	-	-	544 (1.7)	
2003	31,638	25,478 (80.5)	-	-	639 (2.0)	4,539 (14.3)	142 (0.4)	83 (0.3)	1,341 (4.2)	149 (0.5)	276 (0.9)	268 (0.8)	223 (0.7)	144 (0.5)	47 (0.1)	87 (0.3)	15 (0.0)	28 (0.1)	-	-	570 (1.8)	
2004	29,736	23,829 (80.1)	-	-	617 (2.1)	4,491 (15.1)	125 (0.4)	70 (0.2)	1,293 (4.3)	160 (0.5)	299 (1.0)	275 (0.9)	220 (0.7)	112 (0.4)	53 (0.2)	95 (0.3)	13 (0.0)	30 (0.1)	-	-	564 (1.9)	
2005	28,319	22,655 (80.0)	-	-	585 (2.1)	4,338 (15.3)	115 (0.4)	88 (0.3)	1,151 (4.1)	180 (0.6)	296 (1.0)	233 (0.8)	201 (0.7)	130 (0.5)	37 (0.1)	98 (0.3)	11 (0.0)	33 (0.1)	-	-	536 (1.9)	
2006	26,384	20,856 (79.0)	-	-	616 (2.3)	4,192 (15.9)	97 (0.4)	79 (0.3)	1,191 (4.5)	127 (0.5)	263 (1.0)	248 (0.9)	231 (0.9)	112 (0.4)	40 (0.2)	109 (0.4)	9 (0.0)	24 (0.1)	-	-	554 (2.1)	
2007	25,311	20,264 (80.1)	108 (0.4)	31 (0.1)	602 (2.4)	4,134 (16.3)	75 (0.3)	57 (0.2)	1,186 (4.7)	153 (0.6)	328 (1.3)	232 (0.9)	190 (0.8)	108 (0.4)	34 (0.1)	92 (0.4)	19 (0.1)	18 (0.1)	92 (0.4)	61 (0.2)	281 (1.1)	
2008	24,760	19,780 (79.9)	117 (0.5)	43 (0.2)	570 (2.3)	4,001 (16.2)	78 (0.3)	68 (0.3)	1,194 (4.8)	171 (0.7)	292 (1.2)	273 (1.1)	170 (0.7)	121 (0.5)	34 (0.1)	92 (0.4)	13 (0.1)	29 (0.1)	144 (0.6)	80 (0.3)	181 (0.7)	
2009	24,170	19,278 (79.8)	121 (0.5)	36 (0.1)	604 (2.5)	3,940 (16.3)	63 (0.3)	73 (0.3)	1,221 (5.1)	162 (0.7)	321 (1.3)	241 (1.0)	182 (0.8)	100 (0.4)	23 (0.1)	121 (0.5)	26 (0.1)	22 (0.1)	168 (0.7)	88 (0.4)	179 (0.7)	
2010	23,261	18,735 (80.5)	127 (0.5)	53 (0.2)	598 (2.6)	3,959 (17.0)	48 (0.2)	74 (0.3)	1,158 (5.0)	138 (0.6)	330 (1.4)	239 (1.0)	159 (0.7)	88 (0.4)	35 (0.2)	97 (0.4)	29 (0.1)	12 (0.1)	154 (0.7)	76 (0.3)	171 (0.7)	
2011	22,681	17,969 (79.2)	129 (0.6)	57 (0.3)	695 (3.1)	3,929 (17.3)	52 (0.2)	70 (0.3)	1,199 (5.3)	156 (0.7)	317 (1.4)	250 (1.1)	145 (0.6)	83 (0.4)	22 (0.1)	89 (0.4)	27 (0.1)	21 (0.1)	173 (0.8)	89 (0.4)	187 (0.8)	
2012	21,283	16,826 (79.1)	107 (0.5)	46 (0.2)	608 (2.9)	3,853 (17.2)	63 (0.3)	134 (0.6)	1,038 (4.9)	152 (0.7)	348 (1.6)	255 (1.2)	157 (0.7)	82 (0.4)	20 (0.1)	97 (0.5)	34 (0.2)	16 (0.1)	176 (0.8)	80 (0.4)	166 (0.8)	
2013	20,495	16,380 (79.9)	131 (0.6)	34 (0.2)	635 (3.1)	3,634 (17.7)	48 (0.2)	128 (0.6)	972 (4.7)	181 (0.9)	298 (1.5)	228 (1.1)	138 (0.7)	74 (0.4)	29 (0.1)	87 (0.4)	22 (0.1)	17 (0.1)	190 (0.9)	87 (0.4)	153 (0.7)	
2014	19,615	15,586 (79.5)	100 (0.5)	37 (0.2)	642 (3.3)	3,421 (17.4)	41 (0.2)	137 (0.7)	978 (5.0)	184 (0.9)	281 (1.4)	212 (1.1)	132 (0.7)	68 (0.3)	15 (0.1)	101 (0.5)	30 (0.2)	15 (0.1)	207 (1.1)	67 (0.3)	153 (0.8)	
2015	18,280	14,581 (79.8)	119 (0.7)	43 (0.2)	631 (3.5)	3,277 (17.9)	46 (0.3)	128 (0.7)	813 (4.4)	166 (0.9)	248 (1.4)	192 (1.1)	98 (0.5)	73 (0.4)	21 (0.1)	87 (0.5)	20 (0.1)	19 (0.1)	176 (1.0)	69 (0.4)	134 (0.7)	

Note1: Cases having multiple organs are counted independently.

Note2: Numbers in brackets indicate the proportion out of the total number of newly notified tuberculosis cases (all forms) for each sex and age group.

Table 3.2 Number and proportion of miliary tuberculosis by age group and sex, 2004–2015

	year	Age group tota		0–9 yrs	10–19 yrs	20–29 yrs	30–39 yrs	40–49 yrs	50–59 yrs	60–69 yrs	70–79 yrs	80 yrs+
		n (%)	n (%)	n (%)	n (%)	n (%)	n (%)	n (%)	n (%)	n (%)	n (%)	n (%)
男女計	2004	617 (2.1)	0 (0.0)	6 (1.8)	19 (0.8)	22 (0.8)	24 (1.0)	44 (1.1)	82 (1.8)	199 (2.9)	221 (3.6)	
Total	2005	585 (2.1)	1 (1.3)	3 (0.9)	13 (0.6)	38 (1.4)	25 (1.1)	41 (1.1)	77 (1.8)	180 (2.8)	207 (3.2)	
	2006	616 (2.3)	1 (1.9)	1 (0.4)	19 (0.9)	24 (1.0)	27 (1.3)	42 (1.3)	84 (2.2)	173 (2.8)	245 (3.9)	
	2007	602 (2.4)	0 (0.0)	2 (0.9)	10 (0.5)	20 (0.9)	23 (1.2)	26 (0.9)	75 (2.0)	190 (3.4)	256 (4.0)	
	2008	570 (2.3)	1 (1.4)	1 (0.5)	17 (0.9)	18 (0.8)	21 (1.1)	40 (1.4)	64 (1.7)	162 (2.9)	246 (3.7)	
	2009	604 (2.5)	3 (6.4)	2 (0.9)	6 (0.4)	26 (1.2)	25 (1.4)	38 (1.5)	68 (1.9)	164 (3.2)	272 (3.9)	
	2010	598 (2.6)	0 (0.0)	2 (0.7)	11 (0.7)	20 (1.0)	22 (1.2)	23 (1.1)	80 (2.2)	139 (2.8)	301 (4.4)	
	2011	695 (3.1)	1 (1.9)	2 (1.1)	18 (1.3)	21 (1.2)	28 (1.5)	27 (1.3)	58 (1.8)	155 (3.2)	385 (5.3)	
	2012	608 (2.9)	0 (0.0)	2 (1.1)	4 (0.3)	10 (0.7)	20 (1.3)	28 (1.6)	53 (1.8)	147 (3.2)	344 (4.8)	
	2013	635 (3.1)	0 (0.0)	4 (2.1)	9 (0.8)	21 (1.6)	15 (1.0)	23 (1.4)	59 (2.1)	151 (3.5)	353 (4.8)	
	2014	642 (3.3)	1 (3.1)	2 (1.1)	7 (0.6)	15 (1.2)	12 (0.8)	23 (1.5)	53 (2.0)	133 (3.3)	396 (5.4)	
	2015	631 (3.5)	0 (0.0)	2 (1.1)	11 (1.0)	8 (0.7)	24 (1.8)	17 (1.3)	36 (1.5)	153 (4.1)	380 (5.4)	
Males	2004	282 (1.5)	0 (0.0)	2 (1.3)	10 (0.8)	15 (0.9)	21 (1.3)	32 (1.1)	49 (1.5)	78 (1.7)	75 (2.1)	
	2005	269 (1.5)	1 (2.2)	2 (1.2)	7 (0.6)	24 (1.5)	15 (1.0)	23 (0.8)	47 (1.5)	83 (2.0)	67 (1.8)	
	2006	309 (1.8)	0 (0.0)	1 (0.9)	12 (1.1)	17 (1.3)	23 (1.6)	34 (1.3)	55 (2.0)	78 (1.9)	89 (2.4)	
	2007	250 (1.5)	0 (0.0)	2 (1.8)	6 (0.6)	13 (1.0)	14 (1.1)	16 (0.7)	45 (1.7)	76 (2.0)	78 (2.0)	
	2008	241 (1.5)	0 (0.0)	1 (0.9)	13 (1.4)	12 (1.0)	17 (1.4)	26 (1.3)	39 (1.5)	65 (1.8)	68 (1.8)	
	2009	211 (1.4)	0 (0.0)	1 (1.0)	2 (0.2)	18 (1.6)	18 (1.5)	21 (1.2)	26 (1.0)	57 (1.7)	68 (1.7)	
	2010	232 (1.6)	0 (0.0)	2 (1.3)	7 (0.8)	11 (1.1)	19 (1.6)	14 (0.9)	40 (1.5)	54 (1.7)	85 (2.1)	
	2011	283 (2.0)	1 (4.2)	0 (0.0)	12 (1.6)	14 (1.6)	17 (1.5)	18 (1.2)	34 (1.5)	66 (2.1)	121 (2.9)	
	2012	243 (1.9)	0 (0.0)	1 (1.0)	4 (0.6)	7 (0.8)	17 (1.7)	22 (1.7)	33 (1.6)	46 (1.6)	113 (2.8)	
	2013	234 (1.9)	0 (0.0)	2 (2.0)	2 (0.3)	14 (2.0)	7 (0.8)	12 (1.0)	34 (1.7)	52 (1.8)	111 (2.7)	
	2014	249 (2.1)	0 (0.0)	1 (1.1)	3 (0.5)	7 (1.0)	7 (0.8)	9 (0.9)	41 (2.2)	66 (2.5)	115 (2.8)	
	2015	231 (2.1)	0 (0.0)	1 (1.1)	6 (1.0)	7 (1.2)	19 (2.3)	11 (1.2)	20 (1.2)	65 (2.6)	102 (2.7)	
Females	2004	335 (3.2)	0 (0.0)	4 (2.2)	9 (0.7)	7 (0.6)	3 (0.4)	12 (1.2)	33 (2.4)	121 (5.3)	146 (5.5)	
	2005	316 (3.1)	0 (0.0)	1 (0.6)	6 (0.5)	14 (1.3)	10 (1.5)	18 (2.0)	30 (2.5)	97 (4.5)	140 (5.3)	
	2006	307 (3.3)	1 (4.0)	0 (0.0)	7 (0.7)	7 (0.7)	4 (0.6)	8 (1.0)	29 (2.8)	95 (4.6)	156 (6.1)	
	2007	352 (3.9)	0 (0.0)	0 (0.0)	4 (0.4)	7 (0.7)	9 (1.4)	10 (1.4)	30 (2.9)	114 (5.9)	178 (6.7)	
	2008	329 (3.6)	1 (3.3)	0 (0.0)	4 (0.4)	6 (0.6)	4 (0.6)	14 (2.0)	25 (2.4)	97 (5.2)	178 (6.4)	
	2009	393 (4.3)	3 (10.7)	1 (0.8)	4 (0.5)	8 (0.8)	7 (1.0)	17 (2.3)	42 (4.2)	107 (5.9)	204 (6.7)	
	2010	366 (4.2)	0 (0.0)	0 (0.0)	4 (0.6)	9 (1.0)	3 (0.5)	9 (1.5)	40 (4.0)	85 (4.9)	216 (7.3)	
	2011	412 (4.7)	0 (0.0)	2 (2.0)	6 (0.9)	7 (0.8)	11 (1.7)	9 (1.5)	24 (2.5)	89 (5.2)	264 (8.5)	
	2012	365 (4.4)	0 (0.0)	1 (1.2)	0 (0.0)	3 (0.4)	3 (0.5)	6 (1.2)	20 (2.3)	101 (6.1)	231 (7.1)	
	2013	401 (5.0)	0 (0.0)	2 (2.2)	7 (1.2)	7 (1.2)	8 (1.4)	11 (2.1)	25 (3.0)	99 (6.4)	242 (7.4)	
	2014	393 (5.2)	1 (6.3)	1 (1.1)	4 (0.7)	8 (1.4)	5 (0.9)	14 (2.8)	12 (1.6)	67 (4.9)	281 (8.7)	
	2015	400 (5.6)	0 (0.0)	1 (1.2)	5 (1.0)	1 (0.2)	5 (1.0)	6 (1.4)	16 (2.5)	88 (6.8)	278 (8.8)	

Note1: Cases having multiple organs are counted independently.

Note2: % indicate proportion out of the total number of newly notified tuberculosis cases for each age group.

## Previous table Newly notified tuberculosis cases by registered month, 2015

Registered month	Active tuberculosis								LTBI* on treatment
	All active tuberculosis	Active pulmonary tuberculosis						Extra-pulmonary	
		Sputum smear positive				Other bacillary positive	Bacillary negative or bacillary results unknown		
		All sputum smear positive	New	Retreatment					
Total	18,280	14,123	7,131	6,676	455	5,118	1,874	4,157	6,675
Jan.	1,365	1,067	543	501	42	401	123	298	456
Feb.	1,436	1,118	584	543	41	388	146	318	504
Mar.	1,515	1,155	590	548	42	418	147	360	626
Apr.	1,482	1,136	585	546	39	405	146	346	569
May	1,516	1,147	574	543	31	410	163	369	493
Jun.	1,722	1,361	678	634	44	509	174	361	691
Jul.	1,718	1,314	663	618	45	469	182	404	602
Aug.	1,522	1,174	600	560	40	411	163	348	611
Sep.	1,481	1,133	576	545	31	396	161	348	570
Oct.	1,532	1,191	595	559	36	444	152	341	538
Nov.	1,462	1,131	556	527	29	425	150	331	495
Dec.	1,529	1,196	587	552	35	442	167	333	520

\* LTBI: Latent Tuberculosis Infection. These are not included in the number of active tuberculosis.

**【Foreign-born】**

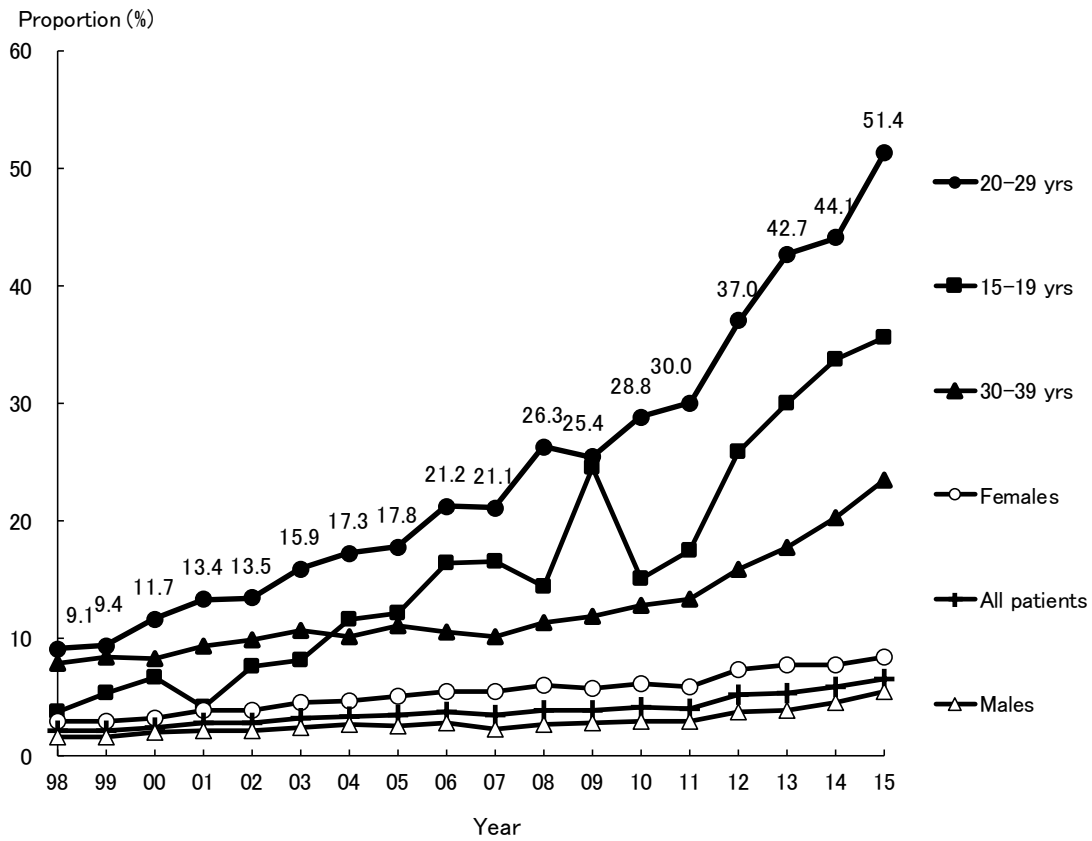


Fig. 3 Annual trend of proportion of foreign-borns among newly notified tuberculosis patients, by sex and age group, from 1998 to 2015

Those whose country of birth is unknown are excluded from the numerator.

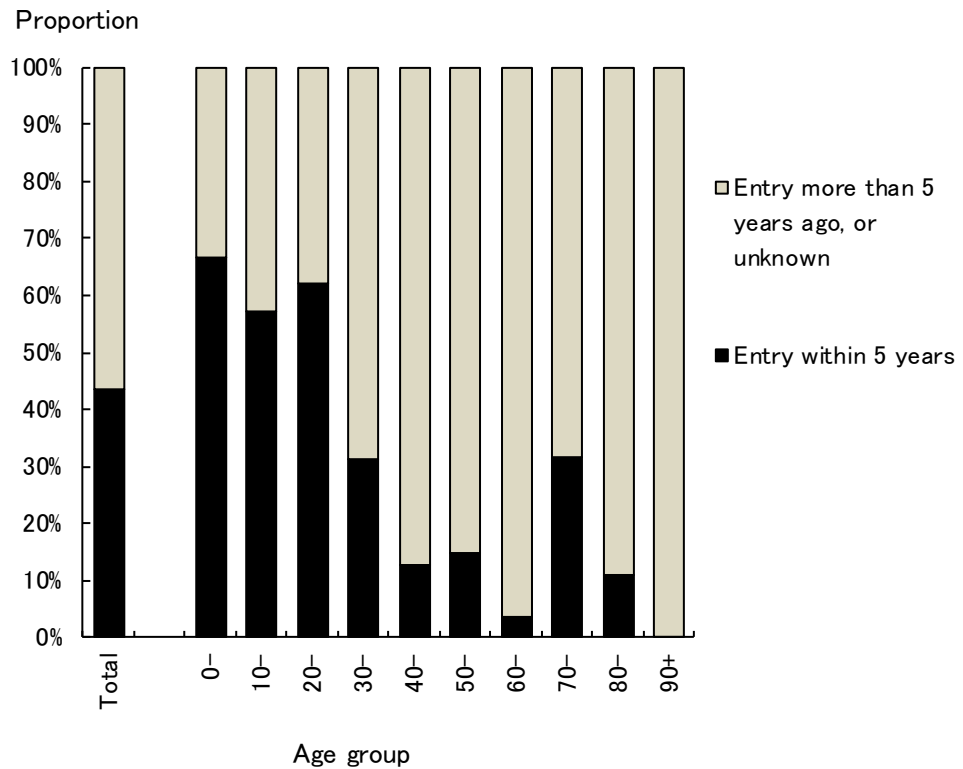


Fig. 4 Proportion of foreign-born tuberculosis patients, by age group and time of entry to Japan, in 2015

Table 4.1 Annual trend of newly notified tuberculosis patients by nationality or country of birth, and by sex, from 1998 to 2015

Year	Number of newly notified tuberculosis patients, all forms	Born in Japan	Foreign nationalities or Foreign borns (*1)	Nationalities or country of birth unknown	Proportion of foreign borns (%) (*2)	Sex (*3)		Ratio of Females to Males
						Males	Females	
1998	41,033	34,382	739	5,912	2.1	365	374	1.0
1999	43,818	37,094	821	5,903	2.2	415	406	1.0
2000	39,384	33,720	837	4,827	2.4	436	401	0.9
2001	35,489	30,305	866	4,318	2.8	442	424	1.0
2002	32,828	28,667	824	3,337	2.8	411	413	1.0
2003	31,638	27,665	906	3,067	3.2	433	473	1.1
2004	29,736	26,205	931	2,600	3.4	479	452	0.9
2005	28,319	25,247	923	2,149	3.5	438	485	1.1
2006	26,384	23,505	920	1,959	3.8	444	476	1.1
2007	25,311	23,451	842	1,018	3.5	364	478	1.3
2008	24,760	23,163	945	652	3.9	416	529	1.3
2009	24,170	22,808	938	424	4.0	414	524	1.3
2010	23,261	21,976	952	333	4.2	424	528	1.2
2011	22,681	21,372	921	388	4.1	416	505	1.2
2012	21,283	19,555	1,069	659	5.2	474	595	1.3
2013	20,495	18,589	1,064	842	5.4	468	596	1.3
2014	19,615	17,727	1,101	787	5.8	531	570	1.1
2015	18,280	16,396	1,164	720	6.6	581	583	1.0

\*1: Number of tuberculosis patients with foreign nationalities until 2011, number of foreign-born patients afterwards.

\*2: Proportion of Tuberculosis patients with foreign nationalities until 2011, proportion of foreign-born patients afterwards, excluding those of unknown nationality or country of birth.

\*3: Sex distribution among foreign nationalities or foreign-borns.

Table 4.2 Annual trend of foreign-borns by age group, 1998–2015

year	Age group Total	0–9 yrs		10–19 yrs		20–29 yrs		30–39 yrs		40–49 yrs		50–59 yrs		60–69 yrs		70–79 yrs		80 yrs+	
		n	(%)	n	(%)	n	(%)	n	(%)	n	(%)	n	(%)	n	(%)	n	(%)	n	(%)
1998	739	6	(0.8)	20	(2.7)	300	(40.6)	215	(29.1)	83	(11.2)	44	(6.0)	23	(3.1)	29	(3.9)	19	(2.6)
1999	821	11	(1.3)	27	(3.3)	319	(38.9)	241	(29.4)	89	(10.8)	54	(6.6)	27	(3.3)	35	(4.3)	18	(2.2)
2000	837	14	(1.7)	26	(3.1)	357	(42.7)	235	(28.1)	92	(11.0)	49	(5.9)	23	(2.7)	27	(3.2)	14	(1.7)
2001	866	4	(0.5)	17	(2.0)	361	(41.7)	249	(28.8)	110	(12.7)	55	(6.4)	27	(3.1)	25	(2.9)	18	(2.1)
2002	824	5	(0.6)	24	(2.9)	345	(41.9)	249	(30.2)	81	(9.8)	47	(5.7)	26	(3.2)	24	(2.9)	23	(2.8)
2003	906	9	(1.0)	25	(2.8)	399	(44.0)	268	(29.6)	98	(10.8)	38	(4.2)	22	(2.4)	27	(3.0)	20	(2.2)
2004	931	4	(0.4)	32	(3.4)	402	(43.2)	250	(26.9)	107	(11.5)	59	(6.3)	28	(3.0)	27	(2.9)	22	(2.4)
2005	923	5	(0.5)	37	(4.0)	378	(41.0)	273	(29.6)	105	(11.4)	62	(6.7)	26	(2.8)	16	(1.7)	21	(2.3)
2006	920	5	(0.5)	34	(3.7)	409	(44.5)	234	(25.4)	113	(12.3)	59	(6.4)	35	(3.8)	11	(1.2)	20	(2.2)
2007	842	6	(0.7)	35	(4.2)	390	(46.3)	224	(26.6)	102	(12.1)	43	(5.1)	15	(1.8)	12	(1.4)	15	(1.8)
2008	945	4	(0.4)	27	(2.9)	468	(49.5)	237	(25.1)	114	(12.1)	41	(4.3)	25	(2.6)	10	(1.1)	19	(2.0)
2009	938	2	(0.2)	50	(5.3)	427	(45.5)	243	(25.9)	103	(11.0)	41	(4.4)	30	(3.2)	20	(2.1)	22	(2.3)
2010	952	5	(0.5)	41	(4.3)	438	(46.0)	242	(25.4)	114	(12.0)	39	(4.1)	35	(3.7)	18	(1.9)	20	(2.1)
2011	921	5	(0.5)	30	(3.3)	419	(45.5)	226	(24.5)	126	(13.7)	53	(5.8)	20	(2.2)	19	(2.1)	23	(2.5)
2012	1,069	4	(0.4)	45	(4.2)	468	(43.8)	237	(22.2)	181	(16.9)	63	(5.9)	33	(3.1)	17	(1.6)	21	(2.0)
2013	1,064	3	(0.3)	52	(4.9)	494	(46.4)	225	(21.1)	147	(13.8)	65	(6.1)	30	(2.8)	25	(2.3)	23	(2.2)
2014	1,101	5	(0.5)	59	(5.4)	511	(46.4)	243	(22.1)	151	(13.7)	71	(6.4)	26	(2.4)	16	(1.5)	19	(1.7)
2015	1,164	3	(0.3)	63	(5.4)	565	(48.5)	252	(21.6)	134	(11.5)	74	(6.4)	27	(2.3)	19	(1.6)	27	(2.3)

Note1: % indicate proportion out of the total number of newly notified foreign-born tuberculosis cases for each age group.

Note2: "Foreign nationalities" until 2011, "Foreign-born" since 2012.

Table 5 Number and proportion of foreign-born tuberculosis patients by country of birth and time of entry to Japan, 2015

Total	Drug resistance								Entry within 5 years	Drug resistance								Entry more than 5 years ago, or unknown	Drug resistance							
	n	(%)	MDR	Any INH resistance	Any RFP resistance	Any resistance*	n	(%)		MDR	Any INH resistance	Any RFP resistance	Any resistance*	n	(%)	MDR	Any INH resistance		Any RFP resistance	Any resistance*						
Total	1,164	(100.0)	16 (100.0)	49 (100.0)	22 (100.0)	54 (100.0)	Total	437	(100.0)	9 (100.0)	23 (100.0)	13 (100.0)	24 (100.0)	Total	659	(100.0)	7 (100.0)	26 (100.0)	9 (100.0)	30 (100.0)						
Philippines	284	(24.4)	3 (18.8)	15 (30.6)	4 (18.2)	17 (31.5)	China	124	(28.4)	5 (55.6)	12 (52.2)	7 (53.8)	12 (50.0)	Philippines	204	(31.0)	2 (28.6)	11 (42.3)	2 (22.2)	12 (40.0)						
China	249	(21.4)	8 (50.0)	18 (36.7)	12 (54.5)	18 (33.3)	Vietnam	95	(21.7)	2 (22.2)	6 (26.1)	2 (15.4)	6 (25.0)	China	125	(19.0)	3 (42.9)	6 (23.1)	5 (55.6)	6 (20.0)						
Vietnam	135	(11.6)	2 (12.5)	7 (14.3)	2 (9.1)	7 (13.0)	Philippines	80	(18.3)	1 (11.1)	4 (17.4)	2 (15.4)	5 (20.8)	Vietnam	40	(6.1)		1 (3.8)		1 (3.3)						
Nepal	108	(9.3)					Nepal	69	(15.8)					Nepal	39	(5.9)										
Indonesia	78	(6.7)	1 (6.3)	1 (2.0)	1 (4.5)	1 (1.9)	Indonesia	46	(10.5)	1 (11.1)	1 (4.3)	1 (7.7)	1 (4.2)	Republic of Korea	35	(5.3)										
Republic of Korea	42	(3.6)			1 (4.5)		Myanmar	15	(3.4)					Indonesia	32	(4.9)										
Thailand	28	(2.4)					Thailand	10	(2.3)					Thailand	18	(2.7)										
Myanmar	23	(2.0)	2 (12.5)	2 (4.1)	2 (9.1)	2 (3.7)							Brazil	15	(2.3)		1 (3.8)		2 (6.7)							
India	21	(1.8)		1 (2.0)		1 (1.9)							India	14	(2.1)		1 (3.8)		1 (3.3)							
Brazil	18	(1.5)		1 (2.0)		2 (3.7)							Peru	13	(2.0)											
Peru	13	(1.1)																								
Mongolia	12	(1.0)																								
Cambodia	10	(0.9)		1 (2.0)		1 (1.9)																				
Others	65	(5.6)				1 (1.9)	Others	53	(12.1)			1 (7.7)		Others	59	(9.0)	2 (28.6)	3 (11.5)	2 (22.2)	4 (13.3)						
Unknown	78	(6.7)		3 (6.1)		4 (7.4)	Unknown	13	(3.0)					Unknown	65	(9.9)		3 (11.5)		4 (13.3)						

Only those countries with more than ten tuberculosis cases are listed.

MDR: Multi-drug resistant, i.e., resistant to at least INH and RFP INH: isoniazid RFP: rifampicin

\*: resistant to either INH, RFP, SM, or EB

Table 6 Occupation of foreign-born tuberculosis patients by sex and age group, in Japan, in 2015

Age group	Total	(%)	Service trade workers	(%)	Health care workers	(%)	Teachers / Nursery staff	(%)	Infants / Children	(%)	Students	(%)	Other regular employees	(%)	Other temporary / day laborer	(%)	Other self-employed	(%)	Housekeeper pers	(%)	Unemployed / Others	(%)	Unknown	(%)
Total	1,164	(100)	50	(4)	21	(2)	8	(1)	9	(1)	310	(27)	332	(29)	121	(10)	15	(1)	40	(3)	215	(18)	43	(4)
Males	581	(100)	13	(2)	5	(1)	4	(1)	6	(1)	196	(34)	187	(32)	47	(8)	6	(1)	2		94	(16)	21	(4)
Females	583	(100)	37	(6)	16	(3)	4	(1)	3	(1)	114	(20)	145	(25)	74	(13)	9	(2)	38	(7)	121	(21)	22	(4)
0-14	9	(100)	-		-		-		9	(100)	-		-		-		-		-		-		-	
15-19	57	(100)	1	(2)	-		-		-		40	(70)	5	(9)	5	(9)	-		1	(2)	5	(9)	-	
20-24	296	(100)	4	(1)	3	(1)	-		-		158	(53)	73	(25)	24	(8)	2	(1)	2	(1)	25	(8)	5	(2)
25-29	269	(100)	10	(4)	8	(3)	1	(0)	-		89	(33)	92	(34)	24	(9)	2	(1)	6	(2)	29	(11)	8	(3)
30-34	154	(100)	10	(6)	-		2	(1)	-		19	(12)	56	(36)	18	(12)	-		12	(8)	31	(20)	6	(4)
35-39	98	(100)	7	(7)	4	(4)	1	(1)	-		4	(4)	35	(36)	16	(16)	2	(2)	8	(8)	16	(16)	5	(5)
40-44	76	(100)	7	(9)	2	(3)	-		-		-		26	(34)	13	(17)	-		7	(9)	17	(22)	4	(5)
45-49	58	(100)	4	(7)	1	(2)	-		-		-		25	(43)	7	(12)	2	(3)	-		13	(22)	6	(10)
50-54	43	(100)	1	(2)	2	(5)	2	(5)	-		-		9	(21)	5	(12)	1	(2)	4	(9)	14	(33)	5	(12)
55-59	31	(100)	5	(16)	-		1	(3)	-		-		7	(23)	5	(16)	2	(6)	-		10	(32)	1	(3)
60+	73	(100)	1	(1)	1	(1)	1	(1)	-		-		4	(5)	4	(5)	4	(5)	-		55	(75)	3	(4)

Previous table Trend of newly notified foreign nationals with TB by year and age group, 1998–2015

Year	All foreigners	Age group							Percentage of 20–29 yrs in total
		0–14	15–19	20–29	30–39	40–49	50–59	60+	
1998	739	11	15	300	215	83	44	71	40.6%
1999	821	13	25	319	241	89	54	80	38.9
2000	837	16	24	357	235	92	49	64	42.7
2001	866	6	15	361	249	110	55	70	41.7
2002	824	6	23	345	249	81	47	73	41.9
2003	906	12	22	399	268	98	38	69	44.0
2004	931	6	30	402	250	107	59	77	43.2
2005	923	9	33	378	273	105	62	63	41.0
2006	920	6	33	409	234	113	59	66	44.5
2007	842	9	32	390	224	102	43	42	46.3
2008	945	5	26	468	237	114	41	54	49.5
2009	938	3	49	427	243	103	41	72	45.5
2010	952	9	37	438	242	114	39	73	46.0
2011	921	8	27	419	226	126	53	62	45.5
2012	1069	7	42	468	237	181	63	71	43.8
2013	1064	7	48	494	225	147	65	78	46.4
2014	1101	8	56	511	243	151	71	61	46.4
2015	1164	9	57	565	252	134	74	73	48.5

Number of tuberculosis patients with foreign nationalities until 2011, number of foreign-born patients afterwards.



Previous table Distribution of foreign nationals with tuberculosis by prefecture and designated city, 2015

	Newly notified patients	Foreign born	Proportion (%)
Japan	18,280	1,164	6.4
Nagano	175	21	12.0
Gunma	192	23	12.0
Sendai city	93	11	11.8
Tochigi	229	27	11.8
Sagamihara city	79	9	11.4
Tokyo	2,306	256	11.1
Aichi	685	76	11.1
Mie	244	27	11.1
Shizuoka	257	28	10.9
Fukuoka city	222	24	10.8
Hiroshima	208	21	10.1
Shimane	102	10	9.8
Fukui	72	7	9.7
Yamanashi	73	7	9.6
Gifu	314	29	9.2
Toyama	125	11	8.8
Shizuoka city	107	9	8.4
Shiga	157	13	8.3
Nagoya city	514	42	8.2
Chiba	721	58	8.0
Kawasaki city	226	18	8.0
Saitama	787	62	7.9
Okayama	154	12	7.8
Hamamatsu city	78	6	7.7
Ibaraki	345	26	7.5
Niigata	146	11	7.5
Okayama city	81	6	7.4
Kagawa	144	9	6.3
Ishikawa	149	9	6.0
Hiroshima city	116	7	6.0
Yokohama city	565	32	5.7
Tokushima	106	6	5.7

Those prefectures and designated cities with 5% or more tuberculosis cases with foreign nationals are listed.

The figures of prefectures do not include those cases registered to designated cities in the respective prefecture, if applicable.

E.g., the figure of Kanagawa prefecture does not include those of Yokohama and Kawasaki cities.