

【Childhood】

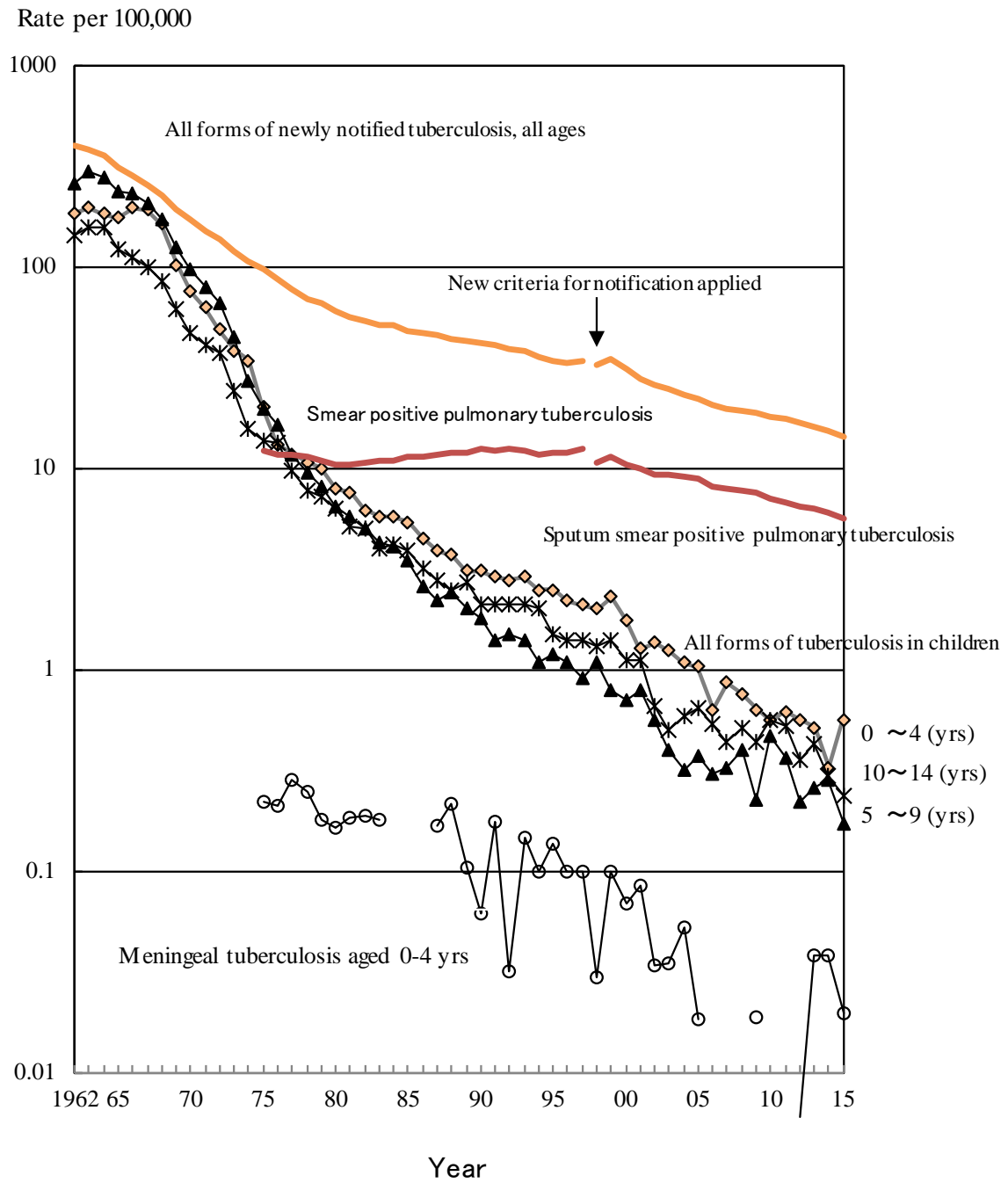


Fig. 1 Trend of childhood tuberculosis notification rates, per 100,000 population, 1962-2015

Table 1 Number and rates of childhood tuberculosis patients and specific extra-pulmonary tuberculosis, 1965-2015

Year	Newly notified tuberculosis aged 0-14 yrs		No. of meningeal tuberculosis		No. of miliary tuberculosis	
	Number	Rate	0-14 yrs	0-4 yrs (Rate)	0-14 yrs	0-4 yrs (Rate)
1965	44,180	175.6	—	—	—	—
1970	18,197	73.4	—	—	—	—
1975	4,905	18.0	28	22 (0.221)	—	—
1980	1,893	6.9	22	14 (0.164)	—	—
1985	1,088	4.2	—	—	—	—
1990	518	2.3	9	4 (0.061)	10	8 (0.122)
1995	340	1.7	8	8 (0.136)	8	8 (0.136)
2000	220	1.2	7	4 (0.069)	3	3 (0.052)
2005	117	0.67	3	1 (0.018)	3	1 (0.018)
2006	85	0.49	0	0	1	1 (0.018)
2007	92	0.53	0	0	0	0
2008	95	0.55	0	0	1	1 (0.019)
2009	73	0.43	1	1 (0.019)	4	3 (0.056)
2010	89	0.53	0	0	0	0
2011	84	0.50	1	0	2	1(0.019)
2012	63	0.38	1	1(0.019)	0	0
2013	66	0.40	2	2(0.038)	0	0
2014	49	0.30	5	2(0.038)	2	1(0.019)
2015	51	0.32	1	1(0.020)	1	0

Extra-pulmonary tuberculosis: Cases are counted independently.

Rate: per 100,000

-: Not available

Table 2 Number of newly notified childhood tuberculosis patients by age and mode of detection, 2015

	Age (yrs)															Total
	0	1	2	3	4	5	6	7	8	9	10	11	12	13	14	
School mass-investigation	0	0	0	0	0	0	0	0	0	0	0	0	0	1	0	1
Family contact investigation	6	2	2	1	2	1	0	0	5	1	0	2	0	2	1	25
Other contact investigation	0	1	1	0	0	0	0	0	1	0	0	0	0	0	0	3
At clinics/hospitals (with symptoms)	4	2	2	1	2	0	0	0	0	1	0	2	4	0	1	19
Others	3	0	0	0	0	0	0	0	0	0	0	0	0	0	0	3
Total	13	5	5	2	4	1	0	0	6	2	0	4	4	3	2	51

Table 3 Proportion of BCG vaccinated cases among newly notified childhood tuberculosis patients and LTBI cases, 2015

	Age in years										0-4	5-9	10-14	Total
	Age in months													
	0-2	3-5	6-8	9-11	Total	0	1	2	3	4	Total			
Tuberculosis cases	1	4	5	3	13	5	5	2	4	29	9	13	51	
BCG vaccinated	0	0	4	3	7	4	5	2	2	20	5	5	30	
BCG not vaccinated	0	4	0	0	4	0	0	0	0	4	0	0	4	
BCG unknown	1	0	1	0	2	1	0	0	2	5	4	8	17	
BCG vaccinated (%)*	-	0.0	100.0	100.0	63.6	100.0	100.0	100.0	100.0	83.3	100.0	100.0	88.2	
LTBI	29	44	143	33	249	49	51	39	32	420	131	110	661	
BCG vaccinated	0	17	101	19	137	31	37	28	19	252	83	39	374	
BCG not vaccinated	19	12	5	2	38	2	2	0	2	44	2	3	49	
BCG unknown	10	15	37	12	74	16	12	11	11	124	46	68	238	
BCG vaccinated (%)*	0.0	58.6	95.3	90.5	78.3	93.9	94.9	100.0	90.5	85.1	97.6	92.9	88.4	

LTBI : Latent Tuberculosis Infection

*% : Proportion of BCG vaccinated cases among all TB/LTBI cases excluding BCG unknown

Previous table Trend of newly notified childhood TB patients by age and calendar year, 1998-2015

Year	Age (yrs)															Total
	0	1	2	3	4	5	6	7	8	9	10	11	12	13	14	
1998	31	39	15	18	16	12	18	14	13	10	7	7	29	18	27	274
1999	43	35	24	23	9	10	15	8	7	10	8	9	27	27	25	280
2000	29	27	19	14	14	8	10	13	5	7	14	11	21	12	16	220
2001	27	18	14	9	7	4	14	11	11	8	8	4	23	18	19	195
2002	30	21	14	12	3	9	8	5	6	6	2	3	14	15	7	155
2003	23	15	17	5	12	9	5	4	1	5	4	3	4	10	10	127
2004	20	18	9	5	10	5	2	3	5	4	3	4	12	6	11	117
2005	23	11	5	13	4	4	3	7	5	3	6	5	7	13	8	117
2006	9	6	8	6	6	6	3	3	2	4	3	4	3	13	9	85
2007	21	5	7	12	2	6	5	2	4	2	2	4	4	7	9	92
2008	11	14	11	4	1	2	6	2	5	8	2	5	7	8	9	95
2009	15	8	6	3	2	4	4	1	3	1	6	1	5	8	6	73
2010	10	6	5	5	4	6	6	8	3	3	5	4	4	7	13	89
2011	5	7	6	7	8	3	7	3	3	4	6	4	5	5	11	84
2012	8	6	6	7	3	2	2	3	1	4	3	2	3	7	6	63
2013	7	4	5	4	7	3	3	2	1	5	3	4	7	3	8	66
2014	5	8	-	2	2	1	6	1	3	4	-	3	3	7	4	49
2015	13	5	5	2	4	1	-	-	6	2	-	4	4	3	2	51

School mass-examination was revised in 2003.

Upper-limitation age of BCG vaccination was changed from 4 years to 6 months, with introduction of direct vaccination policy in 2005.

Previous table Number of prefectures by number of childhood TB patients, 1980-2015

Year	Number of childhood TB patients							Total
	0	1	2~4	5~9	10~14	15~19	20+(cases)	
1980	0	0	1	6	7	4	29	47
1985	0	0	5	11	10	2	19	47
1990	0	3	13	11	8	2	10	47
1995	3	6	14	13	4	2	5	47
2000	9	8	13	10	3	1	3	47
2005	17	8	13	7	2	0	0	47
2006	19	13	8	6	1	0	0	47
2007	17	12	11	5	2	0	0	47
2008	14	12	16	4	1	0	0	47
2009	27	6	8	4	2	0	0	47
2010	15	14	14	3	0	0	1	47
2011	19	11	12	4	0	0	1	47
2012	22	11	11	3	0	0	0	47
2013	19	14	9	5	0	0	0	47
2014	22	14	9	2	0	0	0	47
2015	25	10	9	3	0	0	0	47

[Elderly]

Number of all elderly tuberculosis patients

Number of tuberculosis patients by age group

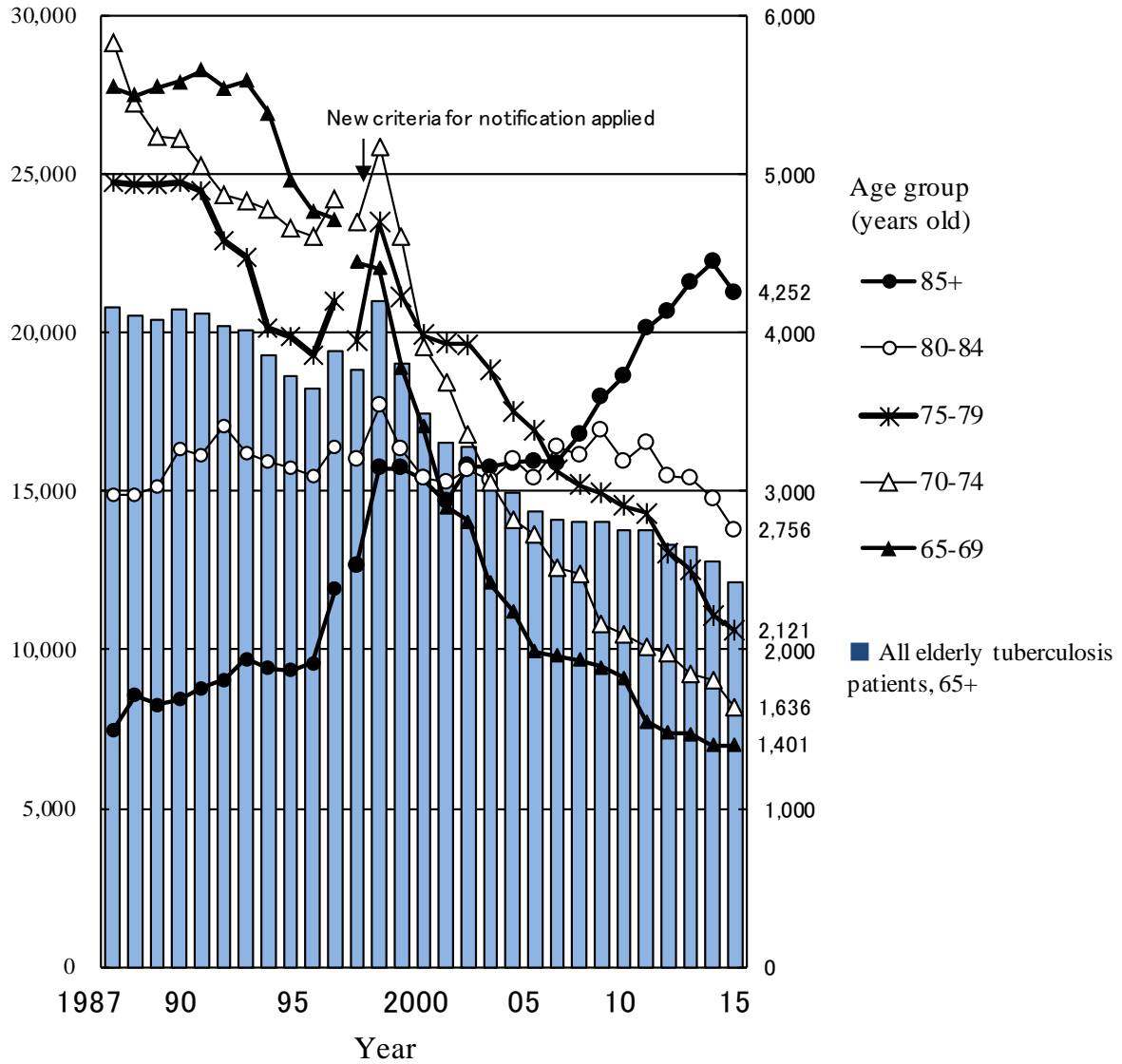


Fig.2 Annual trend of the number of newly notified elderly tuberculosis patients by age group, 1987-2015

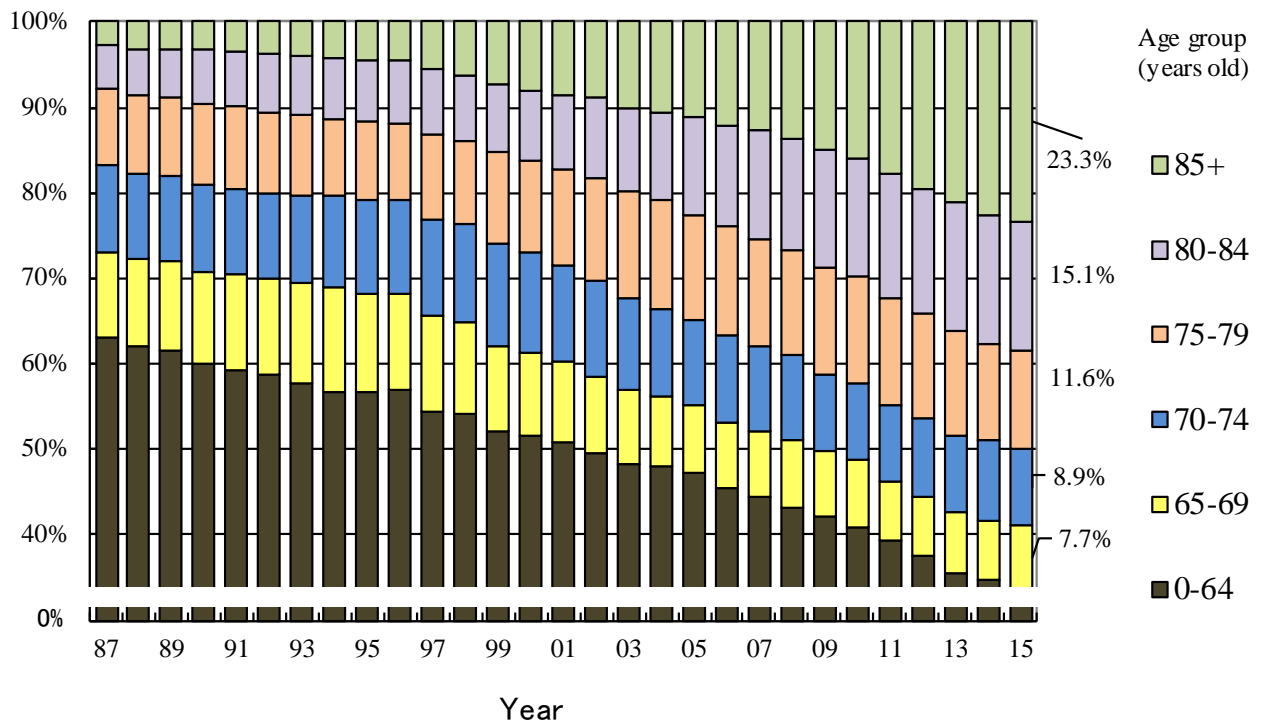


Fig.3 Annual trend of the proportion of elderly tuberculosis patients among all newly notified tuberculosis patients, 1987-2015

Rate per 100,000 population

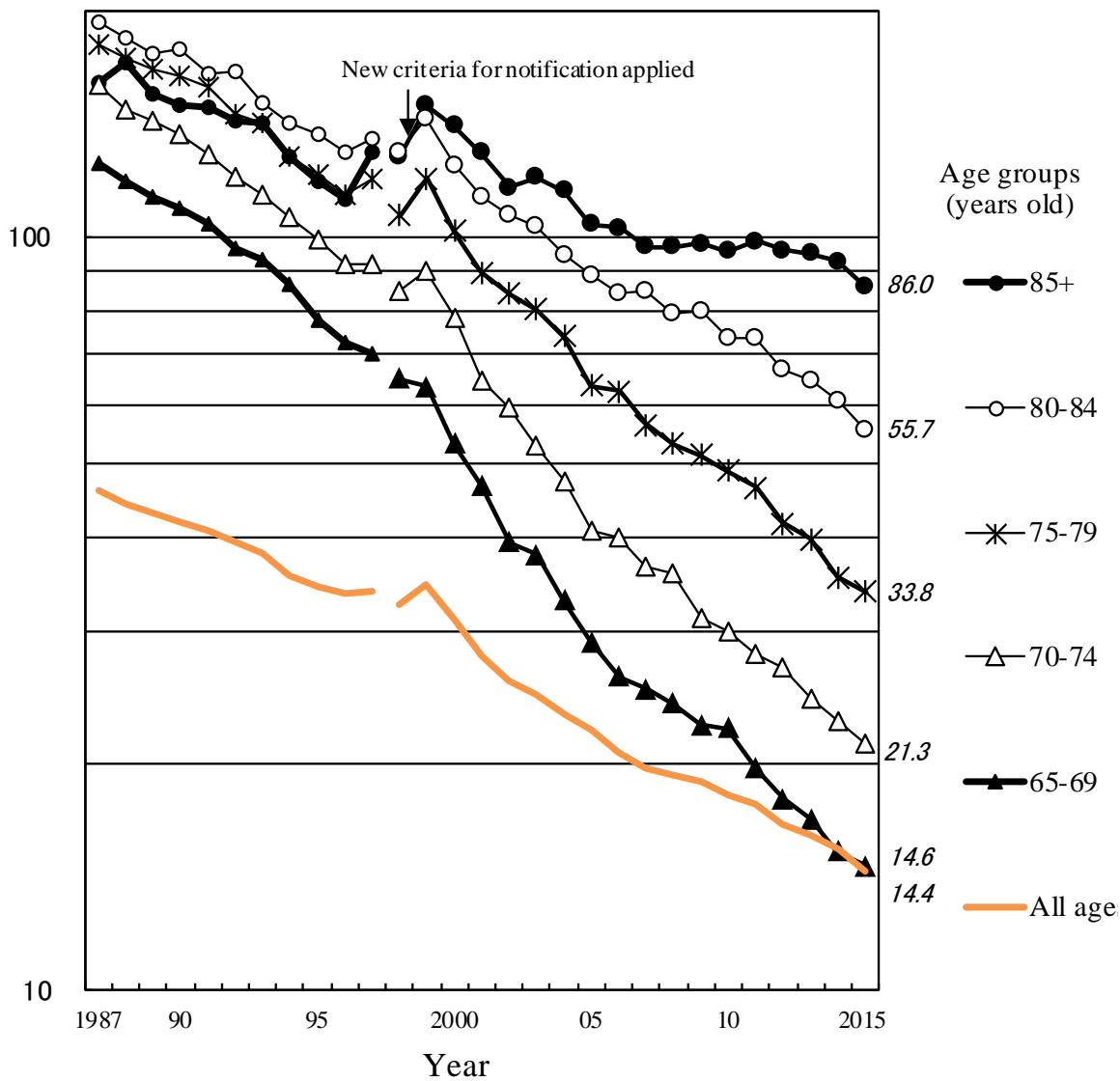


Fig.4 Annual trend of elderly tuberculosis notification rates (per 100,000 population) among the elderly population, by age group, all forms, 1987-2015

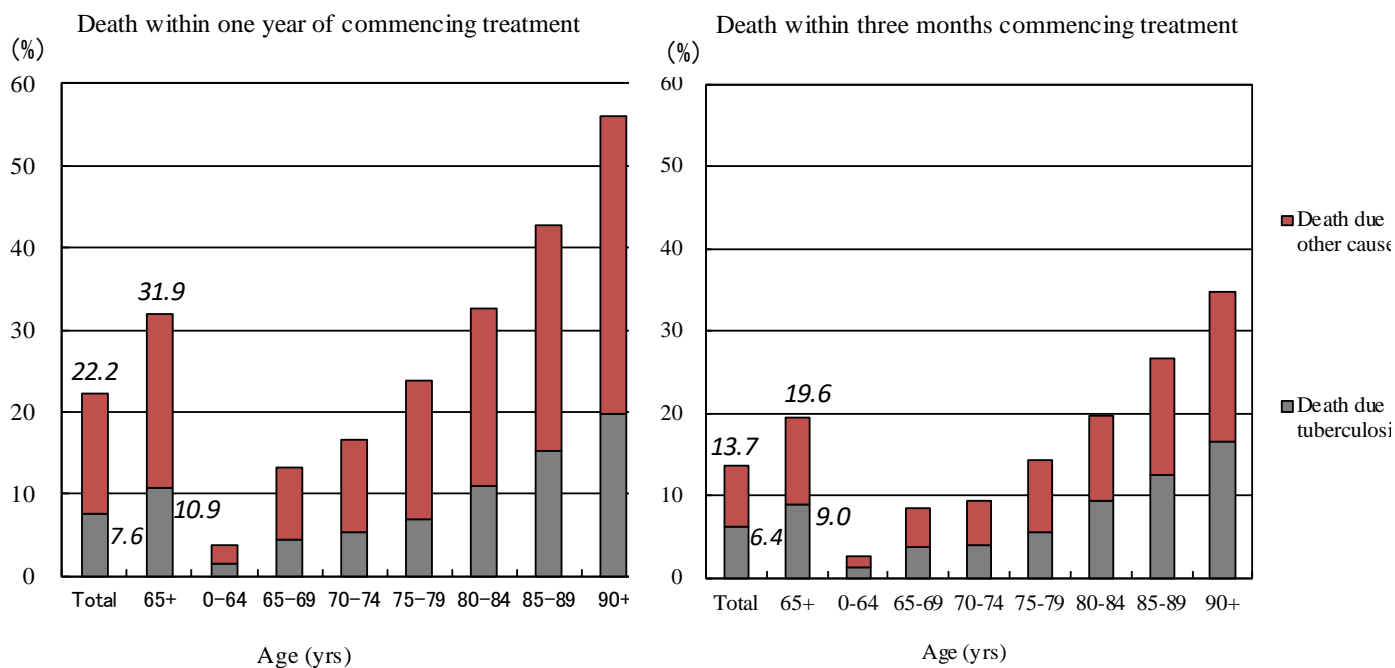


Fig.5 Proportion of death among newly notified tuberculosis patients in 2014 by age group, cause of death and duration till death
 * The date when tuberculosis diagnosis was made was used as the date treatment was commenced for those who died before the start of treatment.

Table 4 Comparison of epidemiological indicators of newly notified tuberculosis patients by sex and age group, 2015

		Age group (years old)					
		All ages	Youth and middle-aged	The elderly			
			15-64	all 65+	65-74	75-84	85+
Number of newly notified tuberculosis patients (all forms, n)	Total	18,280	6,063	12,166	3,037	4,877	4,252
	Male	11,124	3,752	7,343	2,122	3,024	2,197
	Female	7,156	2,311	4,823	915	1,853	2,055
Tuberculosis notification rate (all forms, per 100,000 population)	Total	14.4	8.0	36.4	17.6	43.5	86.0
	Male	18.0	9.8	51.0	26.0	63.6	149.0
	Female	11.0	6.1	25.4	10.1	28.7	59.2
Number of newly notified extra-pulmonary tuberculosis patients (n)	Total	4,157	1,096	3,045	734	1,296	1,015
	Male	2,194	610	1,577	423	710	444
	Female	1,963	486	1,468	311	586	571
Proportion of extra-pulmonary tuberculosis patients among newly notified tuberculosis patients (%)	Total	22.7	18.1	25.0	24.2	26.6	23.9
	Male	19.7	16.3	21.5	19.9	23.5	20.2
	Female	27.4	21.0	30.4	34.0	31.6	27.8
Number of newly notified pulmonary tuberculosis patients (n)	Total	14,123	4,967	9,121	2,303	3,581	3,237
	Male	8,930	3,142	5,766	1,699	2,314	1,753
	Female	5,193	1,825	3,355	604	1,267	1,484
Proportion of pulmonary tuberculosis patients among newly notified tuberculosis patients (%)	Total	77.3	81.9	75.0	75.8	73.4	76.1
	Male	80.3	83.7	78.5	80.1	76.5	79.8
	Female	72.6	79.0	69.6	66.0	68.4	72.2
Proportion of bacteriologically positive tuberculosis patients among all pulmonary tuberculosis patients (%)	Total	86.7	78.4	91.5	86.7	91.7	94.6
	Male	87.2	80.1	91.3	88.2	91.5	94.0
	Female	85.8	75.4	91.7	82.5	91.9	95.4
Proportion of sputum-smear positive pulmonary tuberculosis patients among all pulmonary tuberculosis patients (%)	Total	50.5	41.3	55.7	50.7	54.4	60.5
	Male	51.5	44.1	55.7	53.0	55.3	59.0
	Female	48.7	36.6	55.5	44.4	52.8	62.3
Proportion of cavitory pulmonary tuberculosis patients among all pulmonary tuberculosis patients (%)	Total	31.3	34.1	30.0	35.1	29.3	27.1
	Male	34.8	38.4	32.9	38.8	31.3	29.3
	Female	25.5	26.7	24.9	24.5	25.6	24.5
Proportion of far-advanced cavitory pulmonary tuberculosis patients among all pulmonary tuberculosis patients (%)	Total	1.9	2.3	1.6	2.0	1.3	1.7
	Male	2.1	2.7	1.7	2.2	1.2	1.9
	Female	1.5	1.5	1.5	1.3	1.7	1.4
Proportion of symptomatic pulmonary tuberculosis patients upon diagnosis among all pulmonary tuberculosis (%)	Total	75.0	63.9	81.2	73.5	80.6	87.3
	Male	75.1	65.2	80.7	74.7	80.6	86.5
	Female	74.8	61.5	82.1	70.0	80.6	88.3
Proportion of pulmonary tuberculosis patients with only symptoms other than respiratory symptoms among symptomatic pulmonary tuberculosis patients (%)	Total	24.2	20.0	25.9	22.9	24.9	28.7
	Male	22.3	20.0	23.3	22.7	22.8	24.5
	Female	27.4	20.2	30.2	23.4	28.8	33.6
Proportion of patient delay of two months or more among symptomatic pulmonary tuberculosis patients (%)*	Total	20.0	27.7	16.6	21.3	17.2	13.1
	Male	20.6	29.1	16.8	22.6	16.5	12.4
	Female	18.9	25.2	16.2	17.3	18.5	13.9
Proportion of doctor delay of one month or more among symptomatic pulmonary tuberculosis patients (%)*	Total	21.5	18.9	22.7	23.6	23.9	20.9
	Male	21.0	16.9	22.8	21.4	23.9	22.6
	Female	22.5	22.4	22.6	30.3	23.9	18.9
Proportion of total delay of three months or more among symptomatic pulmonary tuberculosis patients (%)*	Total	20.4	28.3	16.9	20.1	19.2	12.6
	Male	19.9	27.8	16.4	19.6	17.7	11.9
	Female	21.3	29.2	17.9	21.5	21.8	13.4
Proportion of tuberculosis patients detected as out-patient for other diseases among newly notified tuberculosis patients (%)	Total	11.2	6.6	13.5	15.8	15.0	10.0
	Male	11.4	6.3	14.0	15.8	15.0	10.9
	Female	10.9	7.2	12.7	15.8	15.0	9.1
Proportion of tuberculosis patients detected as in-patient for other diseases among newly notified tuberculosis patients (%)	Total	14.4	4.3	19.5	13.9	19.3	23.7
	Male	14.1	5.1	18.8	14.6	18.6	23.2
	Female	14.8	2.9	20.5	12.2	20.5	24.2

Subjects: * Excluding the patients of unknown delays

Previous table Number and proportion of elderly TB by prefecture and city, 2015

65+ (yrs)			85+ (yrs)		
Area	<i>n</i>	%	Area	<i>n</i>	%
Japan	18,280	66.6	Japan	4,252	23.3
Kumamoto	137	87.3	Kumamoto	72	45.9
Wakayama	127	84.7	Fukui	32	44.4
Kumamoto city	101	80.8	Toyama	50	40.0
Akita	70	80.5	Yamagata	32	39.0
Kyoto	110	80.3	Tottori	35	38.9
Niigata city	69	80.2	Shimane	39	38.2
Saga	108	80.0	Ishikawa	55	36.9
Nagasaki	173	79.7	Akita	32	36.8
Kouchi	86	79.6	Kyoto	49	35.8
Miyazaki	128	79.5	Saga	48	35.6
Ehime	130	77.8	Niigata city	30	34.9
Toyama	97	77.6	Okayama city	27	33.3
Hiroshima	161	77.4	Mie	81	33.2
Oita	154	77.4	Ehime	55	32.9
Ishikawa	115	77.2	Nagano	57	32.6
.	.	.			
Osaka city	544	58.8	Chiba city	28	17.8
Saitama	458	58.2	Yokohama city	99	17.5
Sendai city	54	58.1	Sakai city	31	16.8
Yokohama city	318	56.3	Tokyo	379	16.4
Chiba	399	55.3	Tokyo 23wards	266	15.1
Saitama city	91	54.2	Saitama	117	14.9
Tokyo	1,229	53.3	Chiba	99	13.7
Kawasaki city	118	52.2	Kawasaki city	28	12.4
Tokyo 23wards	884	50.2	Osaka city	108	11.7
Sagamihara city	38	48.1	Sagamihara city	9	11.4

Descending order by proportion of elderly TB patients