

【Case finding】

Table 1 Proportion of mode of detection among newly notified tuberculosis patients, 2007-2015

Year	Newly notified TB patients n	Individual medical checkup		Mass screening								Contact examination				Medical institutions						Others		Unknown		
		n	%	Schools		Residents		Employees		Facilities		Family		Others		Outpatients with TB symptoms(*1)		Inpatients with other diseases		Outpatients with other diseases		n	%	n	%	
				n	%	n	%	n	%	n	%	n	%	n	%	n	%	n	%							
2007	25,311	537	2.1	217	0.9	636	2.5	1,931	7.6	145	0.6	355	1.4	370	1.5	16,997	67.2	2,031	8.0	1,611	6.4	340	1.3	141	0.6	
2008	24,760	639	2.6	195	0.8	486	2.0	1,877	7.6	144	0.6	325	1.3	410	1.7	15,347	62.0	2,681	10.8	2,100	8.5	316	1.3	240	1.0	
2009	24,170	611	2.5	197	0.8	550	2.3	1,749	7.2	136	0.6	324	1.3	311	1.3	14,864	61.5	2,752	11.4	2,220	9.2	301	1.2	155	0.6	
2010	23,261	507	2.2	244	1.0	544	2.3	1,618	7.0	128	0.6	313	1.3	350	1.5	13,901	59.8	2,792	12.0	2,305	9.9	333	1.4	226	1.0	
2011	22,681	470	2.1	188	0.8	497	2.2	1,531	6.8	126	0.6	354	1.6	482	2.1	13,177	58.1	2,916	12.9	2,515	11.1	330	1.5	95	0.4	
2012	21,283	409	1.9	163	0.8	498	2.3	1,424	6.7	121	0.6	315	1.5	374	1.8	12,284	57.7	2,941	13.8	2,312	10.9	357	1.7	85	0.4	
2013	20,495	413	2.0	172	0.8	455	2.2	1,246	6.1	89	0.4	314	1.5	333	1.6	11,978	58.4	2,745	13.4	2,306	11.3	336	1.6	108	0.5	
2014	19,615	344	1.8	201	1.0	404	2.1	1,221	6.2	92	0.5	303	1.5	333	1.7	11,441	58.3	2,591	13.2	2,210	11.3	328	1.7	147	0.7	
2015	18,280	319	1.7	192	1.1	359	2.0	1,147	6.3	78	0.4	248	1.4	263	1.4	10,556	57.7	2,630	14.4	2,043	11.2	144	0.8	127	0.7	
2015																										
Age group																										
0~9	38	1	2.6	0	0.0	0	0.0	0	0.0	0	0.0	20	52.6	3	7.9	12	31.6	0	0.0	0	0.0	2	5.3		0.0	
10~19	176	6	3.4	40	22.7	0	0.0	3	1.7	0	0.0	20	11.4	9	5.1	85	48.3	5	2.8	4	2.3	1	0.6		0.0	
20~29	1,127	29	2.6	139	12.3	2	0.2	247	21.9	5	0.4	27	2.4	61	5.4	539	47.8	25	2.2	13	1.2	6	0.5	9	0.8	
30~39	1,101	18	1.6	9	0.8	4	0.4	264	24.0	3	0.3	18	1.6	46	4.2	637	57.9	25	2.3	42	3.8	7	0.6	12	1.1	
40~49	1,363	41	3.0	3	0.2	19	1.4	266	19.5	4	0.3	29	2.1	37	2.7	791	58.0	44	3.2	89	6.5	12	0.9	12	0.9	
50~59	1,351	37	2.7	1	0.1	18	1.3	200	14.8	6	0.4	31	2.3	34	2.5	778	57.6	83	6.1	112	8.3	23	1.7	8	0.6	
60~69	2,359	65	2.8	0	0.0	77	3.3	141	6.0	6	0.3	36	1.5	34	1.4	1,302	55.2	270	11.4	341	14.5	33	1.4	22	0.9	
70~79	3,757	72	1.9	0	0.0	120	3.2	24	0.6	16	0.4	34	0.9	16	0.4	2,149	57.2	627	16.7	621	16.5	20	0.5	31	0.8	
80~89	5,317	31	0.6	0	0.0	111	2.1	2	0.0	18	0.3	28	0.5	12	0.2	3,206	60.3	1,123	21.1	708	13.3	30	0.6	23	0.4	
90~	1,691	19	1.1	0.0	0.0	8	0.5	0.0	0.0	20	1.2	5	0.3	11	0.7	1,057	62.5	428	25.3	113	6.7	10	0.6	10	0.6	

TB: tuberculosis

*1 : TB symptoms: Respiratory symptoms such as cough, sputum expectoration, bloody sputum, and hemoptysis; and other symptoms such as wheezing, chest pain, back pain, dyspnea, fever, night sweating, fatigue tendency, and weight loss.

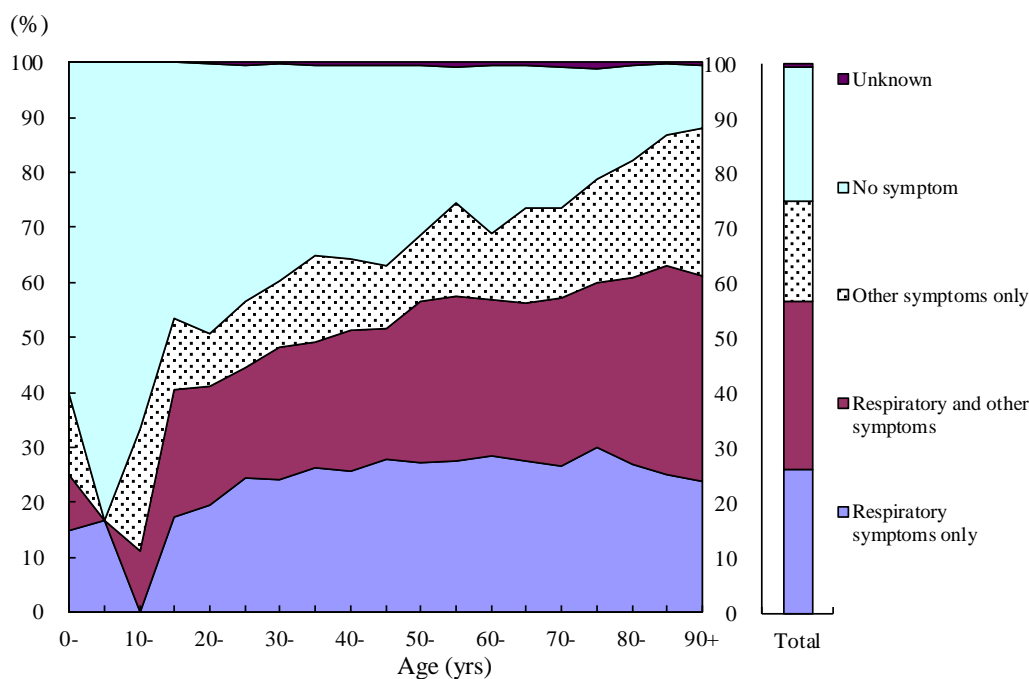


Fig.1 Proportion of symptoms among newly notified pulmonary tuberculosis patients by 5- years age group, in 2015

Respiratory symptoms include cough, sputum expectoration, bloody sputum, and hemoptysis. Other symptoms include wheezing, chest pain, back pain, dyspnea, fever, night sweating, fatigue tendency, and weight loss.

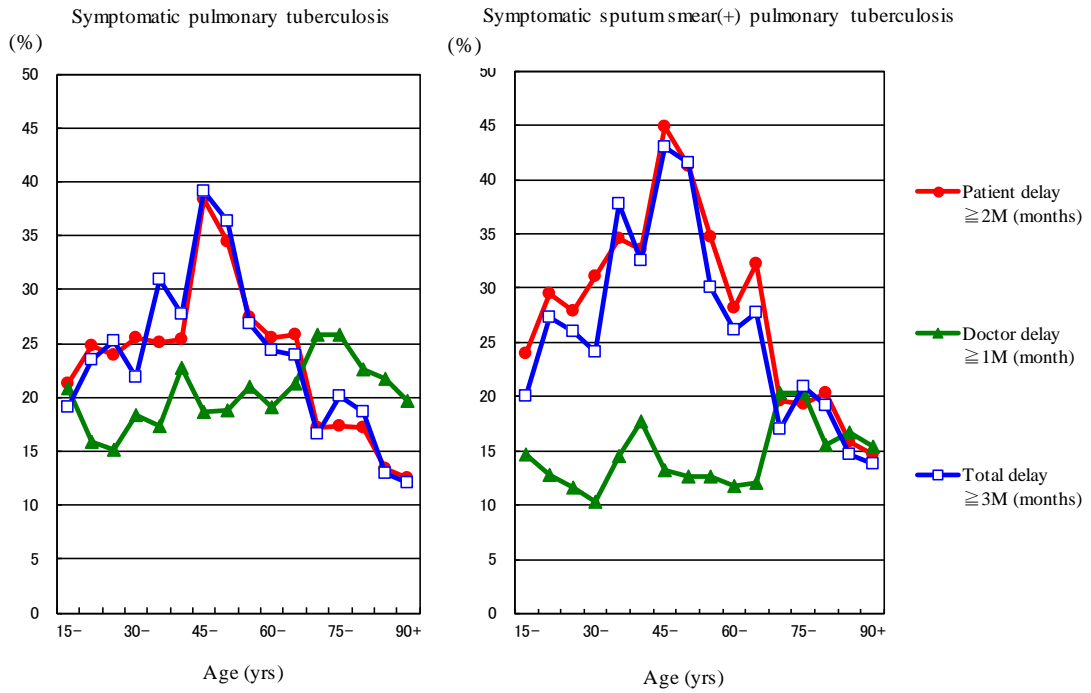


Fig.2 Proportion of patient delay, doctor delay and total delay among symptomatic pulmonary tuberculosis patients by 5-year age group, in 2015

Patient delay: time interval from the onset of symptoms to the first visit to a medical institution of 2 months or longer
 Doctor delay: time interval from the first visit to a medical institution to the diagnosis of tuberculosis of 1 month or longer
 Total delay: time interval from the onset of symptoms to the diagnosis of tuberculosis is 3 months or longer

Previous table Proportion of mode of detection among newly notified TB patients by age group, 2015

Age groups	Newly notified TB patients <i>n</i>	Individual medical checkup %	Mass screening				Contact examination		Medical institutions			Others %	Unknown %
			Schools	Residents	Employees	Facilities	Family	Others	Outpatients with TB symptoms (*1)	Inpatients with other diseases	Outpatients with other diseases		
			%	%	%	%	%	%	%	%	%		
All forms of TB													
Total	18,280	1.7	1.1	2.0	6.3	0.4	1.4	1.4	57.7	14.4	11.2	0.8	0.7
0-14	51	2.0	2.0	0.0	0.0	0.0	49.0	5.9	33.3	2.0	2.0	3.9	0.0
15-19	163	3.7	23.9	0.0	1.8	0.0	9.2	5.5	49.1	2.5	1.8	0.6	0.0
20-24	524	3.1	19.3	0.4	16.6	0.4	2.7	5.7	44.7	2.1	0.8	0.2	0.8
25-29	603	2.2	6.3	0.0	26.5	0.5	2.2	5.1	50.6	2.3	1.5	0.8	0.8
30-34	517	1.5	1.4	0.2	24.2	0.2	1.0	4.8	57.6	1.7	4.1	0.6	0.8
35-39	584	1.7	0.3	0.5	23.8	0.3	2.2	3.6	58.0	2.7	3.6	0.7	1.4
40-44	693	2.6	0.3	1.3	20.8	0.1	2.5	2.2	60.2	2.2	5.5	0.7	1.2
45-49	670	3.4	0.1	1.5	18.2	0.4	1.8	3.3	55.8	4.3	7.6	1.0	0.6
50-54	646	3.7	0.0	1.9	18.0	0.6	2.5	2.5	54.5	5.3	7.3	1.9	0.5
55-59	705	1.8	0.1	0.9	11.9	0.3	2.1	2.6	60.4	7.0	9.2	1.6	0.7
60-64	958	3.0	0.0	2.6	9.1	0.2	1.8	1.8	54.9	8.0	14.8	1.8	0.7
65-69	1,401	2.6	0.0	3.7	3.9	0.3	1.4	1.2	55.4	13.8	14.2	1.1	1.1
70-74	1,636	1.8	0.0	3.6	1.2	0.4	1.5	0.6	57.3	13.9	17.2	0.8	0.9
75-79	2,121	2.0	0.0	2.9	0.2	0.5	0.4	0.3	57.1	18.8	16.0	0.3	0.8
80-84	2,756	0.7	0.0	2.8	0.0	0.4	0.6	0.3	60.0	19.7	14.3	0.5	0.3
85-89	2,561	0.5	0.0	1.3	0.1	0.3	0.5	0.1	60.6	22.6	12.3	0.6	0.6
90+	1,691	1.1	0.0	0.5	0.0	1.2	0.3	0.7	62.5	25.3	6.7	0.6	0.6
(Re-count) Sputum smear positive pulmonary TB													
Total	7,131	1.1	0.5	1.5	3.7	0.3	0.6	0.4	65.1	14.6	9.9	0.7	0.5
0-14	2	0.0	0.0	0.0	0.0	0.0	0.0	0.0	100.0	0.0	0.0	0.0	0.0
15-19	41	2.4	22.0	0.0	0.0	0.0	2.4	0.0	61.0	4.9	2.4	2.4	0.0
20-24	130	3.8	12.3	0.0	8.5	0.0	1.5	0.0	72.3	0.0	0.8	0.0	0.0
25-29	162	0.6	3.7	0.0	19.8	0.6	0.0	0.0	69.8	1.9	1.2	0.6	0.6
30-34	149	0.0	2.0	0.7	17.4	0.0	0.0	1.3	67.8	1.3	4.0	2.0	0.7
35-39	199	2.0	0.0	0.0	17.1	0.0	0.5	0.5	72.4	2.0	3.5	0.5	0.5
40-44	216	2.8	0.0	0.9	11.1	0.0	0.9	0.9	74.5	1.9	5.6	0.5	0.5
45-49	238	2.5	0.0	2.1	12.6	0.4	1.3	1.3	68.9	3.4	4.6	0.4	0.4
50-54	252	3.6	0.0	0.8	13.5	0.0	1.2	2.4	65.1	4.4	5.2	1.6	0.4
55-59	283	0.7	0.4	1.1	6.7	0.4	0.7	1.8	69.6	6.4	8.5	2.1	1.1
60-64	383	3.1	0.0	1.6	7.3	0.5	0.5	0.8	63.7	7.0	13.1	0.5	0.8
65-69	552	1.1	0.0	1.4	4.0	0.2	1.1	0.4	65.9	12.7	10.0	0.5	1.1
70-74	616	0.8	0.0	2.8	1.0	0.3	0.8	0.5	62.8	13.3	14.4	1.3	0.8
75-79	792	1.1	0.0	1.8	0.1	0.4	0.4	0.1	61.7	18.6	14.8	0.3	0.4
80-84	1,157	0.1	0.0	2.7	0.0	0.3	0.3	0.0	63.6	19.4	12.3	0.4	0.4
85-89	1,190	0.3	0.0	1.3	0.0	0.2	0.4	0.0	63.9	21.9	10.8	0.6	0.3
90+	769	1.3	0.0	0.3	0.0	0.9	0.4		64.8	23.5	6.6	0.4	0.4

TB: tuberculosis

TB symptoms: Respiratory symptoms such as cough, sputum expectoration, bloody sputum, and hemoptysis; and other symptoms such as wheezing, chest pain, back pain, dyspnea, fever, night sweating, fatigue tendency, and weight loss.

Previous table Number of newly notified TB patients by occupation, sex and age group, 2015

Sex/Age group	Total	Service workers	Nurses/Public health nurses	Medical doctors	Other medical workers	Teachers/Nursery nurses	Pupils/Students	Other regular workers	Other temporary/daily workers	Other self-employed	House-keepers	Infants/Little children	Jobless/ Others	Unknown
Male	11,124	215	16	47	91	32	294	1,810	438	623	9	16	7,180	353
0-14	29	-	-	-	-	-	13	-	-	-	-	16	-	-
15-19	84	1	-	-	1	-	58	9	5	1	1	-	8	-
20-24	292	13	-	-	3	-	139	83	26	1	-	-	24	3
25-29	322	17	3	5	18	2	67	145	23	2	1	-	26	13
30-39	605	48	7	8	22	6	16	339	28	31	-	-	77	23
40-49	840	37	4	6	20	7	1	431	64	80	-	-	155	35
50-59	913	39	1	9	18	8	-	385	73	84	-	-	269	27
60-69	1,723	42	1	7	4	4	-	325	148	144	1	-	963	84
70-79	2,467	16	-	5	4	2	-	78	62	167	1	-	2,033	99
80+	3,849	2	-	7	1	3	-	15	9	113	5	-	3,625	69
Female	7,156	226	203	14	173	40	205	585	209	117	314	14	4,877	179
0-14	22	-	-	-	-	-	8	-	-	-	-	14	-	-
15-19	79	-	-	-	-	-	66	4	4	-	-	-	4	1
20-24	232	18	10	-	6	1	89	59	17	2	3	-	21	6
25-29	281	36	19	4	21	6	31	85	18	5	10	-	36	10
30-39	496	50	56	4	40	6	10	133	51	8	51	-	72	15
40-49	523	41	57	3	41	12	1	147	37	17	46	-	108	13
50-59	438	35	46	3	35	7	0	94	34	16	36	-	114	18
60-69	636	26	14	-	25	6	0	54	29	26	67	-	359	30
70-79	1,290	16	1	-	5	1	0	7	16	22	68	-	1,117	37
80+	3,159	4	-	-	-	1	0	2	3	21	33	-	3,046	49

Previous table Proportion of mode of detection among newly notified pulmonary TB patients aged 20-59 years by occupation, 2015

	Pulmonary TB patients	Individual medical checkup	Mass screening			Contact examination		Clinics/Hospitals			Others/Unknown
			Residents	Employees	Schools/Facilities	Family	Others	Outpatients with TB symptoms (*2)	Inpatients with other diseases	Outpatients with other diseases	
Total	4,066	2.9	1.0	23.1	4.2	2.6	4.2	50.6	3.1	4.8	3.5
Service workers	275	3.3	1.5	25.8	0.0	4.7	2.5	52.4	2.9	4.7	2.2
Medical workers(*1)	398	1.8	0.3	37.2	0.3	1.3	15.1	34.7	1.5	3.5	4.5
Teachers/ Nursery nurses	49	10.2	0.0	26.5	2.0	4.1	4.1	42.9	6.1	4.1	0.0
Students	313	2.9	0.0	1.6	48.2	1.6	6.1	30.4	0.3	0.6	8.3
Other regular workers	1,574	2.4	0.6	37.7	0.1	2.4	2.7	46.8	2.2	3.9	1.2
Other temporary/ daily workers	304	3.0	0.7	17.4	0.3	3.3	4.3	62.2	2.3	3.0	3.6
Other self-employed	206	4.4	3.9	6.8	0.0	2.4	0.5	67.0	4.9	9.2	1.0
Housekeepers	112	2.7	6.3	0.9	0.0	6.3	1.8	70.5	0.9	8.9	1.8
Jobless/ Others	638	3.4	1.1	1.3	1.6	3.1	2.0	65.0	8.0	8.8	5.6
Unknown	197	3.6	1.0	17.8	1.5	0.0	4.6	52.3	2.5	4.6	12.2

*1 Medical workers include nurses, public health nurses, medical doctors and dentists, physical therapists, occupational therapists, medical technologists, radiographers, and co-medicals.

*2 TB symptoms: Respiratory symptoms such as cough, sputum expectoration, bloody sputum, and hemoptysis; and other symptoms such as wheezing, chest pain, back pain, dyspnea, fever, night sweating, fatigue tendency, and weight loss.

【Tuberculosis Characteristics upon Diagnosis】

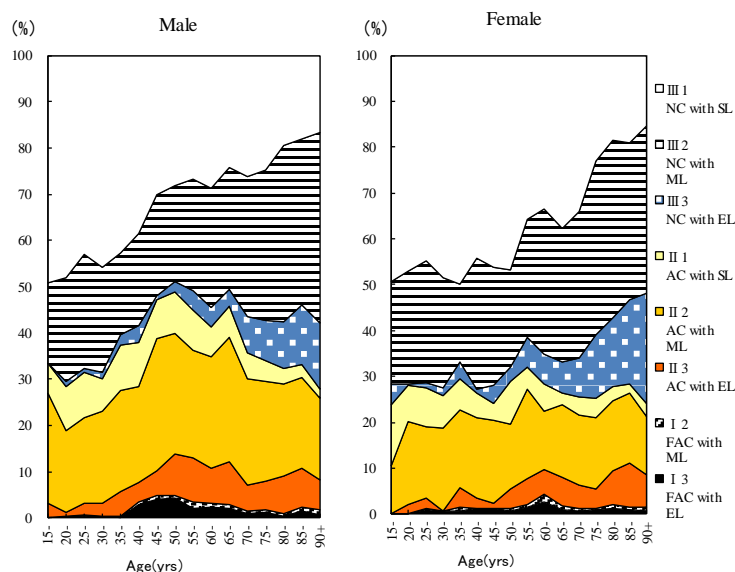


Fig.3 Proportion of cases classified by X-ray classification by sex and 5-year age group, 2015

NC : Non-cavitary SL : Slight lesion AC : Advanced cavitory ML : Moderate lesion
 FAC: Far-advance cavitory EL : Extensive lesion

Table 2 Number of newly notified tuberculosis patients with HIV infection, by sex and age group, 2015 and 2007–2015

Age group	Sputum smear positive		Other bacteriologically-positive		Bacteriologically-negative		Extra-pulmonary		Total	
	M	F	M	F	M	F	M	F	M	F
2015 Calendar year										
Total	15 (3)	2 (1)	5 (2)	2 (2)	2	0	14 (2)	0	36 (7)	4 (3)
0-19	0	0	0	0	0	0	0	0	0	0
20-24	1 (1)	0	1 (1)	0	0	0	0	0	2 (2)	0
25-29	1 (1)	1 (1)	0	0	0	0	0	0	1 (1)	1 (1)
30-34	1	0	1	0	0	0	1	0	3	0
35-39	3 (1)	0	2	1 (1)	1	0	3 (1)	0	9 (2)	1 (1)
40-44	1	0	0	0	1	0	6 (1)	0	8 (1)	0
45-49	2	0	0	0	0	0	1	0	3	0
50-54	2	0	1 (1)	0	0	0	1	0	4 (1)	0
55-59	0	0	0	0	0	0	0	0	0	0
60-64	2	0	0	1 (1)	0	0	1	0	3	1 (1)
65-69	0	0	0	0	0	0	1	0	1	0
70-74	0	0	0	0	0	0	0	0	0	0
75-79	1	0	0	0	0	0	0	0	1	0
80+	1	1	0	0	0	0	0	0	1	1
2007-2015 Calendar year										
Total	149 (15)	25 (14)	80 (18)	11 (8)	38 (4)	7 (5)	167 (30)	24 (12)	434 (67)	67 (39)
0-19	1 (1)	0	0	0	0	0	2	0	3 (1)	0
20-24	5 (3)	0	3 (2)	0	1 (1)	1 (1)	1	1	10 (6)	2 (1)
25-29	9 (4)	4 (3)	1 (1)	1 (1)	1 (1)	0	9 (1)	1 (1)	20 (7)	6 (5)
30-34	12 (3)	4 (4)	10 (1)	3 (2)	2	1 (1)	21 (7)	4 (2)	45 (11)	12 (9)
35-39	22 (2)	3 (3)	17 (4)	3 (3)	6	2 (2)	27 (6)	4 (3)	72 (12)	12 (11)
40-44	26 (1)	4 (3)	15 (5)	0	7 (1)	3 (1)	41 (12)	5 (4)	89 (19)	12 (8)
45-49	15 (1)	1 (1)	9 (3)	1 (1)	4 (1)	0	30 (4)	2	58 (9)	4 (2)
50-54	12	0	11 (2)	0	5	0	8	0	36 (2)	0
55-59	8	0	3	0	4	0	9	2 (2)	24	2 (2)
60-64	13	1	5	1 (1)	3	0	7	0	28	2 (1)
65-69	10	0	3	0	3	0	6	1	22	1
70-74	2	2	1	0	1	0	2	1	6	3
75-79	5	0	0	0	1	0	3	2	9	2
80+	9	6	2	2	0	0	1	1	12	9

() : Re-count of foreigners

HIV : Human Immunodeficiency Virus. M : male patients, F : female patients.

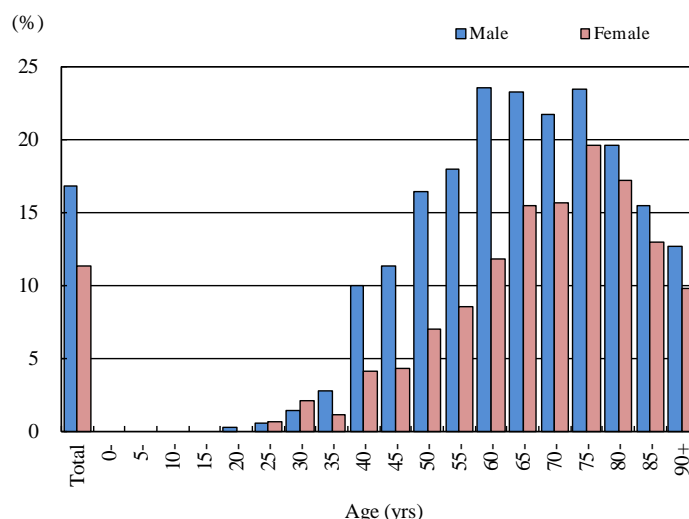


Fig.4 Proportion of newly notified tuberculosis patients with diabetes mellitus in each age-group by sex, 2015

Table 3 Drug susceptibility test results among newly notified pulmonary tuberculosis patients, by treatment history, 2012–2015

Treatment history, Culture examination results, Drug susceptibility test results	2012				2013				2014				2015			
	n	%	%	%	n	%	%	%	n	%	%	%	n	%	%	%
Total																
Pulmonary tuberculosis	16,432	100%			15,972	100%			15,149	100%			14,123	100%		
Culture result obtained	14,058	85.6			13,311	83.3			12,909	85.2			12,260	86.8		
Culture positive	11,261	68.5	100%		10,523	65.9	100%		10,259	67.7	100%		10,035	71.1	100%	
DST result obtained	8,347		74.1	100%	7,701		73.2	100%	7,645		74.5	100%	7,630		76.0	100%
MDR	60			0.7	47			0.6	56			0.7	48			0.6
Any INH resistance	380			4.6	369			4.8	349			4.6	372			4.9
Any RFP resistance	73			0.9	64			0.8	76			1.0	77			1.0
Any resistance*	810			9.7	757			9.8	749			9.8	767			10.1
New treatment																
Pulmonary tuberculosis	15,040	100%			14,727	100%			13,956	100%			13,102	100%		
Culture result obtained	12,882	85.7			12,279	83.4			11,897	85.2			11,394	87.0		
Culture positive	10,379	69.0	100%		9,782	66.4	100%		9,523	68.2	100%		9,379	71.6	100%	
DST result obtained	7,676		74.0	100%	7,166		73.3	100%	7,104		74.6	100%	7,135		76.1	100%
MDR	38			0.5	31			0.4	40			0.6	33			0.5
Any INH resistance	310			4.0	326			4.5	288			4.1	317			4.4
Any RFP resistance	46			0.6	42			0.6	58			0.8	58			0.8
Any resistance*	712			9.3	680			9.5	664			9.3	686			9.6
Re-treatment																
Pulmonary tuberculosis	1,094	100%			1,013	100%			968	100%			851	100%		
Culture result obtained	959	87.7			852	84.1			848	87.6			732	86.0		
Culture positive	693	63.3	100%		586	57.8	100%		591	61.1	100%		534	62.7	100%	
DST result obtained	555		80.1	100%	435		74.2	100%	449		76.0	100%	412		77.2	100%
MDR	22			4.0	16			3.7	15			3.3	14			3.4
Any INH resistance	67			12.1	35			8.0	57			12.7	49			11.9
Any RFP resistance	26			4.7	22			5.1	17			3.8	18			4.4
Any resistance*	94			16.9	65			14.9	79			17.6	72			17.5
No information about treatment history																
Pulmonary tuberculosis	298	100%			232	100%			225	100%			170	100%		
Culture result obtained	217	72.8			180	77.6			164	72.9			134	78.8		
Culture positive	189	63.4	100%		155	66.8	100%		145	64.4	100%		122	71.8	100%	
DST result obtained	116		61.4	100%	100		64.5	100%	92		63.4	100%	83		68.0	100%
MDR	0			0.0	0			0.0	1			1.1	1			1.2
Any INH resistance	3			2.6	8			8.0	4			4.3	6			7.2
Any RFP resistance	1			0.9	0			0.0	1			1.1	1			1.2
Any resistance*	4			3.4	12			12.0	6			6.5	9			10.8

DST: Drug susceptibility test MDR : Multi-drug resistant, i.e., resistant to at least INH and RFP INH: isoniazid RFP: rifampicin

Cases having drug resistance are counted independently by drug.

*: resistant to either INH, RFP, SM, or EB

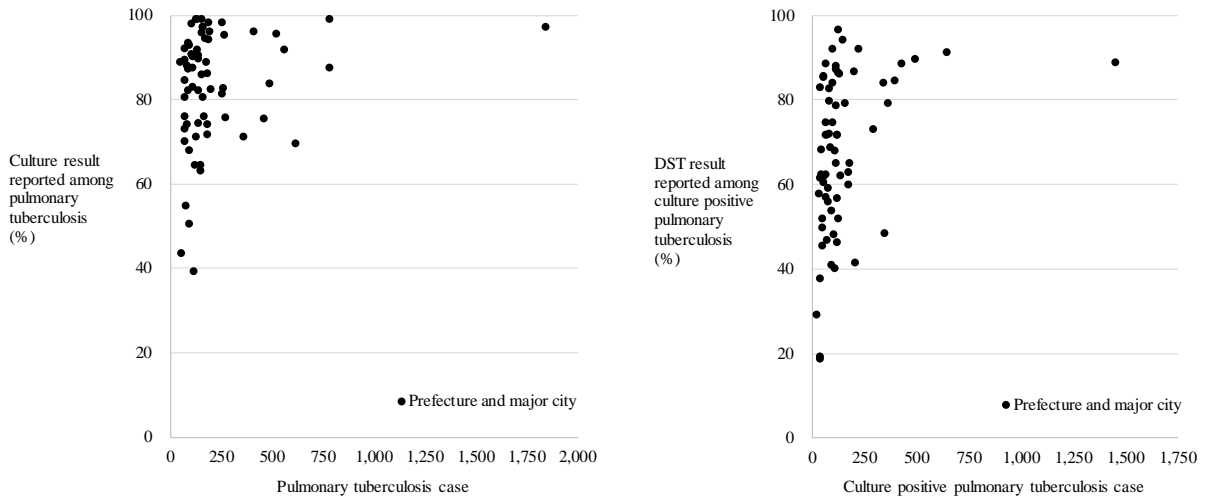
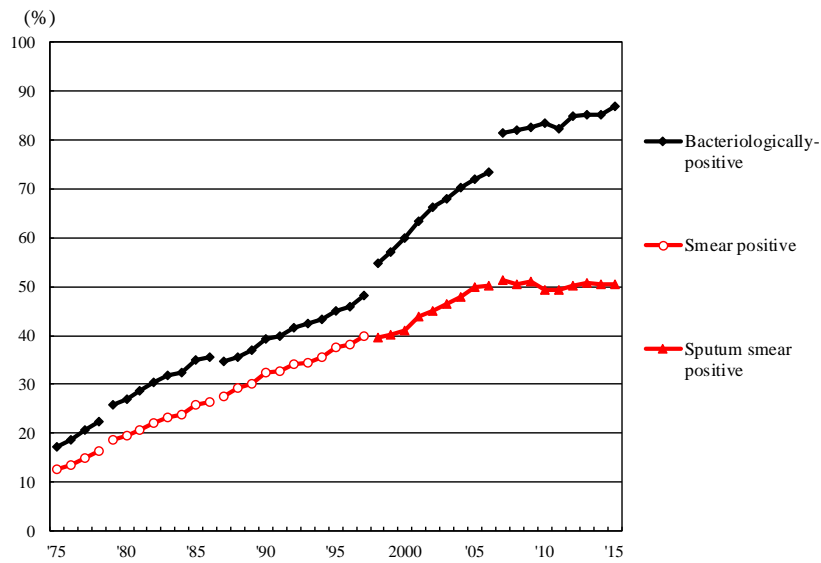
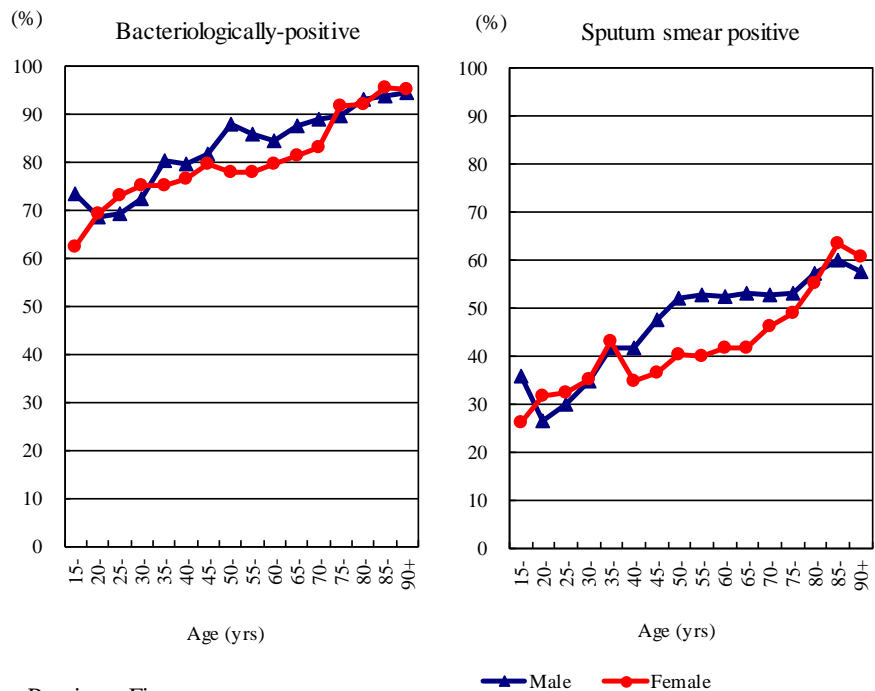


Fig. 5 Scatter plot of culture results reported among pulmonary tuberculosis patients and anti-tuberculosis drug susceptibility test results among newly notified pulmonary tuberculosis patients, by prefecture and major city, 2015

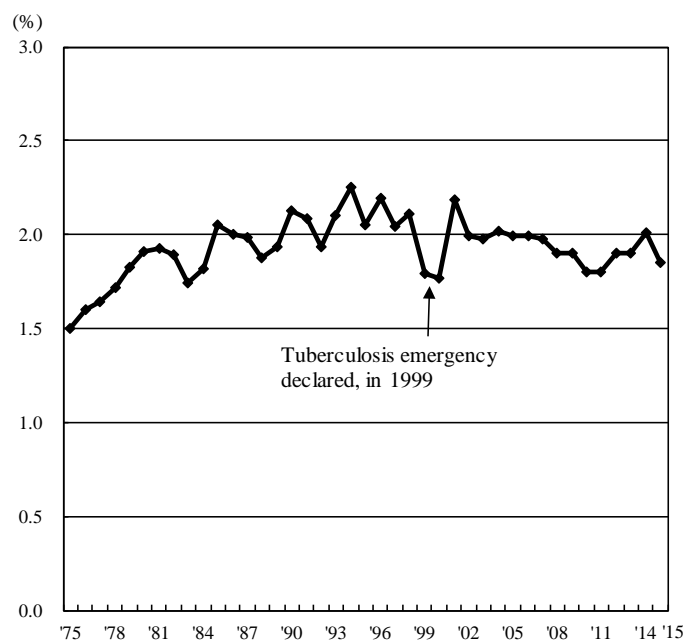


Previous Fig.
Proportion of bacteriologically confirmed cases among newly notified pulmonary tuberculosis patients, 1975-2015

Sources of information and subjects:
 Annual tuberculosis reports from public health centers
 1975-1978: All forms of tuberculosis
 1979-1986: Pulmonary tuberculosis
 Nationwide computerized tuberculosis surveillance system
 1987-1997: Pulmonary Tuberculosis
 1998-2006: Pulmonary tuberculosis (New patient criteria for notification were applied)
 2007-2009: Pulmonary tuberculosis (Item of nucleic acid amplification was added)



Previous Fig. Proportion of bacteriologically confirmed cases among newly notified pulmonary tuberculosis patients by sex and 5-year age group, 2015



Previous Fig. Proportion of far-advanced cavitory cases among newly notified pulmonary Tuberculosis patients, 1975-2015

Previous table Proportion of cavitary or/and sputum smear positive cases among newly notified pulmonary TB patients aged 30-59 years, 2015

	Male								Female							
	Pulmonary TB	Cavitary or sputum smear(+)			Cavitary and sputum smear(+)			Pulmonary TB	Cavitary or sputum smear(+)			Cavitary and sputum smear(+)				
		n	%	Ratio	n	%	Ratio		n	%	Ratio	n	%	Ratio		
Service workers	105	60	57.1	1.2	35	33.3	2.3	93	49	52.7	1.4	19	20.4	2.3		
Medical workers	81	39	48.1	1.0	12	14.8	1.0	234	90	38.5	1.0	21	9.0	1.0		
Teachers/ Nursery nurses	18	10	55.6	1.2	2	11.1	0.8	22	7	31.8	0.8	3	13.6	1.5		
Other regular workers	957	473	49.4	1.0	234	24.5	1.7	297	123	41.4	1.1	40	13.5	1.5		
Other temporary/ daily workers	146	104	71.2	1.5	56	38.4	2.6	92	49	53.3	1.4	23	25.0	2.8		
Other self-employed	162	113	69.8	1.4	57	35.2	2.4	34	23	67.6	1.8	9	26.5	2.9		
Jobless	382	253	66.2	1.4	129	33.8	2.3	196	110	56.1	1.5	44	22.4	2.5		
Others	115	50	43.5	0.9	21	18.3	1.2	158	70	44.3	1.2	26	16.5	1.8		
Total	1,966	1,102	56.1		546	27.8		1,126	521	46.3		185	16.4			

Others : Houskeepers/ Students/ Unknown

Ratio : The ratio of each proportion to that of medical workers

Previous table Drug susceptibility test results among newly notified pulmonary tuberculosis patients, by sex and age group, 2015 and 2007–2015

Age group	Total										New treatment (Re-count)									
	Male					Female					Male					Female				
	DST result obtained	MDR	Any INH resist -ance	Any RFP resist -ance	*Any resist -ance	DST result obtained	MDR	Any INH resist -ance	Any RFP resist -ance	* Any resist -ance	DST result obtained	MDR	Any INH resist -ance	Any RFP resist -ance	* Any resist -ance	DST result obtained	MDR	Any INH resist -ance	Any RFP resist -ance	* Any resist -ance
2015 Calendar year																				
Total	4,890	28	254	47	513	2,740	20	118	30	254	4,533	20	218	37	458	2,602	13	99	21	228
0-19	44	0	3	0	5	31	0	3	0	6	42	0	3	0	5	30	0	3	0	6
20-29	244	6	18	6	37	202	4	15	7	28	227	2	14	2	31	198	3	14	5	26
30-39	259	1	17	3	37	179	4	17	4	31	245	1	16	3	35	173	4	17	4	31
40-49	362	3	23	4	43	206	1	12	1	23	347	2	22	2	39	196	0	11	0	22
50-59	447	2	18	7	57	152	4	13	4	21	422	1	17	5	53	141	2	11	2	18
60-69	819	7	48	9	91	214	0	4	2	18	762	7	42	9	84	203	0	3	2	17
70-79	1,027	3	54	8	120	485	3	18	5	51	957	2	47	7	107	456	1	14	2	45
80+	1,688	6	73	10	123	1,271	4	36	7	76	1,531	5	57	9	104	1,205	3	26	6	63
2007-2015 Calendar year																				
Total	41,690	322	2,114	457	4,975	21,484	171	955	230	2,214	37,662	200	1,708	294	4,301	20,111	103	776	148	1,943
0-19	287	6	24	6	53	266	2	21	3	53	273	4	22	4	51	254	2	19	3	49
20-29	2,080	44	150	55	357	1,773	46	141	59	300	1,988	33	130	42	332	1,692	33	124	43	275
30-39	2,605	17	167	28	395	1,950	24	125	35	281	2,462	13	156	24	371	1,868	19	111	26	256
40-49	3,370	30	186	43	472	1,616	17	81	24	212	3,161	20	164	28	424	1,530	9	70	15	193
50-59	4,862	46	271	74	712	1,359	18	63	25	156	4,492	27	232	46	636	1,285	7	47	13	136
60-69	7,446	51	402	86	1,011	2,008	12	100	16	246	6,778	33	332	54	875	1,883	6	78	9	212
70-79	9,204	74	466	96	1,091	3,982	24	164	31	404	8,159	39	343	54	903	3,651	10	130	15	349
80+	11,836	54	448	69	884	8,530	28	260	37	562	10,349	31	329	42	709	7,948	17	197	24	473
2007-2015 Calendar year																				
Total	100%	0.8	5.1	1.1	11.9	100%	0.8	4.4	1.1	10.3	100%	0.5	4.5	0.8	11.4	100%	0.5	3.9	0.7	9.7
0-19	100	2.1	8.4	2.1	18.5	100	0.8	7.9	1.1	19.9	100	1.5	8.1	1.5	18.7	100	0.8	7.5	1.2	19.3
20-29	100	2.1	7.2	2.6	17.2	100	2.6	8.0	3.3	16.9	100	1.7	6.5	2.1	16.7	100	2.0	7.3	2.5	16.3
30-39	100	0.7	6.4	1.1	15.2	100	1.2	6.4	1.8	14.4	100	0.5	6.3	1.0	15.1	100	1.0	5.9	1.4	13.7
40-49	100	0.9	5.5	1.3	14.0	100	1.1	5.0	1.5	13.1	100	0.6	5.2	0.9	13.4	100	0.6	4.6	1.0	12.6
50-59	100	0.9	5.6	1.5	14.6	100	1.3	4.6	1.8	11.5	100	0.6	5.2	1.0	14.2	100	0.5	3.7	1.0	10.6
60-69	100	0.7	5.4	1.2	13.6	100	0.6	5.0	0.8	12.3	100	0.5	4.9	0.8	12.9	100	0.3	4.1	0.5	11.3
70-79	100	0.8	5.1	1.0	11.9	100	0.6	4.1	0.8	10.1	100	0.5	4.2	0.7	11.1	100	0.3	3.6	0.4	9.6
80+	100	0.5	3.8	0.6	7.5	100	0.3	3.0	0.4	6.6	100	0.3	3.2	0.4	6.9	100	0.2	2.5	0.3	6.0

DST: Drug susceptibility test. MDR: Multi-drug resistance, i.e., resistant to at least INH and RFP.

INH: Isoniazid. RFP: Rifampicin.

Previous table Drug susceptibility test results among newly notified pulmonary tuberculosis patients, by sex and age group,
2007-2015 (Re-count of foreigners)

Age group	Total										New treatment (Re-count)									
	Male					Female					Male					Female				
	DST result obtained	MDR	Any INH resist-ance	Any RFP resist-ance	* Any resist-ance	DST result obtained	MDR	Any INH resist-ance	Any RFP resist-ance	* Any resist-ance	DST result obtained	MDR	Any INH resist-ance	Any RFP resist-ance	* Any resist-ance	DST result obtained	MDR	Any INH resist-ance	Any RFP resist-ance	* Any resist-ance
2007-2015 Calendar year																				
Total	1,194	50	125	57	211	1,330	65	169	81	270	1,127	31	100	39	186	1,256	48	146	60	238
0-19	61	5	14	5	21	44	1	5	2	6	58	3	12	3	19	43	1	4	2	5
20-29	584	35	70	40	111	584	39	89	48	141	559	25	55	30	99	560	29	77	36	126
30-39	211	4	16	5	31	339	15	46	17	66	202	3	15	4	29	317	12	42	13	60
40-49	112	4	12	5	23	196	4	16	6	33	101	0	7	0	16	181	1	13	2	28
50-59	73	0	2	0	5	73	3	7	4	11	69	0	2	0	5	68	3	5	4	8
60-69	64	2	7	2	13	35	1	3	2	5	58	2	6	2	12	34	1	3	2	5
70-79	48	0	2	0	3	23	2	3	2	4	44	0	2	0	3	18	1	2	1	2
80+	41	0	2	0	4	36	0	0	0	4	36	0	1	0	3	35	0	0	0	4
2007-2015 Calendar year																				
Total	100%	4.2	10.5	4.8	17.7	100%	4.9	12.7	6.1	20.3	100%	2.8	8.9	3.5	16.5	100%	3.8	11.6	4.8	18.9
0-19	100	8.2	23.0	8.2	34.4	100	2.3	11.4	4.5	13.6	100	5.2	20.7	5.2	32.8	100	2.3	9.3	4.7	11.6
20-29	100	6.0	12.0	6.8	19.0	100	6.7	15.2	8.2	24.1	100	4.5	9.8	5.4	17.7	100	5.2	13.8	6.4	22.5
30-39	100	1.9	7.6	2.4	14.7	100	4.4	13.6	5.0	19.5	100	1.5	7.4	2.0	14.4	100	3.8	13.2	4.1	18.9
40-49	100	3.6	10.7	4.5	20.5	100	2.0	8.2	3.1	16.8	100	0.0	6.9	0.0	15.8	100	0.6	7.2	1.1	15.5
50-59	100	0.0	2.7	0.0	6.8	100	4.1	9.6	5.5	15.1	100	0.0	2.9	0.0	7.2	100	4.4	7.4	5.9	11.8
60-69	100	3.1	10.9	3.1	20.3	100	2.9	8.6	5.7	14.3	100	3.4	10.3	3.4	20.7	100	2.9	8.8	5.9	14.7
70-79	100	0.0	4.2	0.0	6.3	100	8.7	13.0	8.7	17.4	100	0.0	4.5	0.0	6.8	100	5.6	11.1	5.6	11.1
80+	100	0.0	4.9	0.0	9.8	100	0.0	0.0	0.0	11.1	100	0.0	2.8	0.0	8.3	100	0.0	0.0	0.0	11.4

DST: Drug susceptibility test. MDR: Multi-drug resistance, i.e., resistant to at least INH and RFP. INH: Isoniazid. RFP: Rifampicin.