

【Summary】

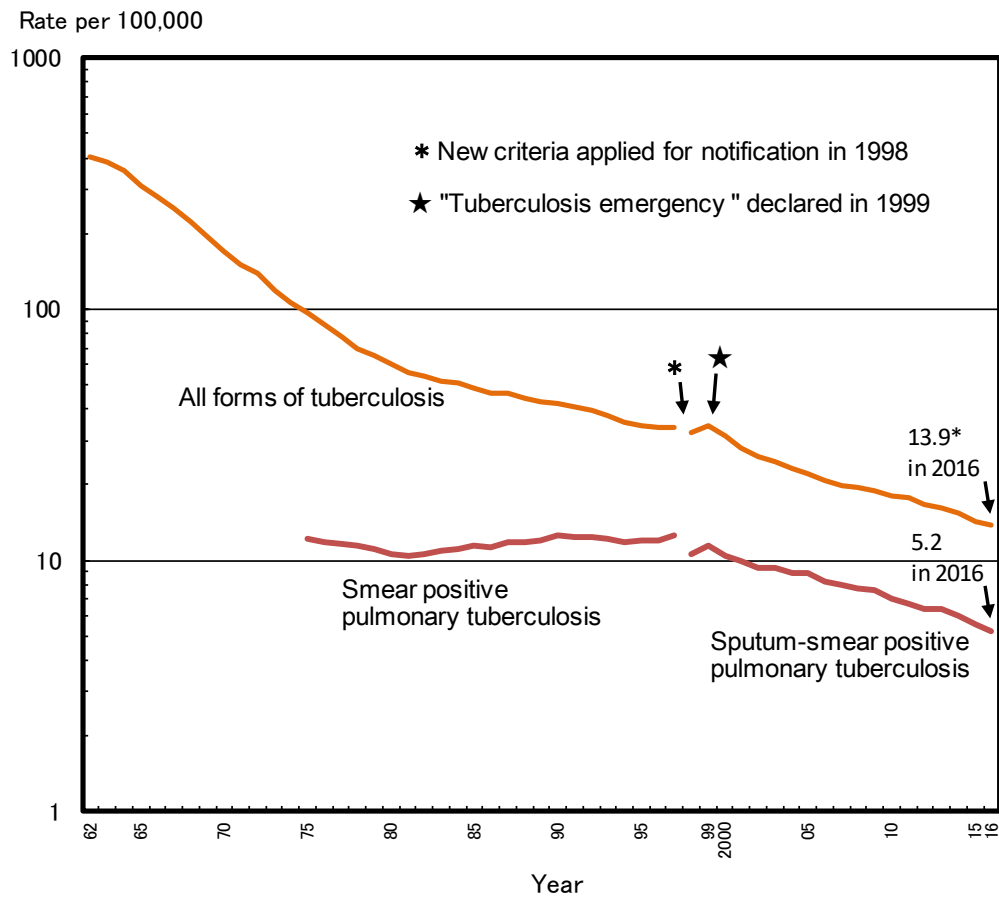


Fig. 1 Annual trend of tuberculosis notification rate (all forms, sputum-smear positive pulmonary tuberculosis) per 100,000 population in Japan, 1962-2016

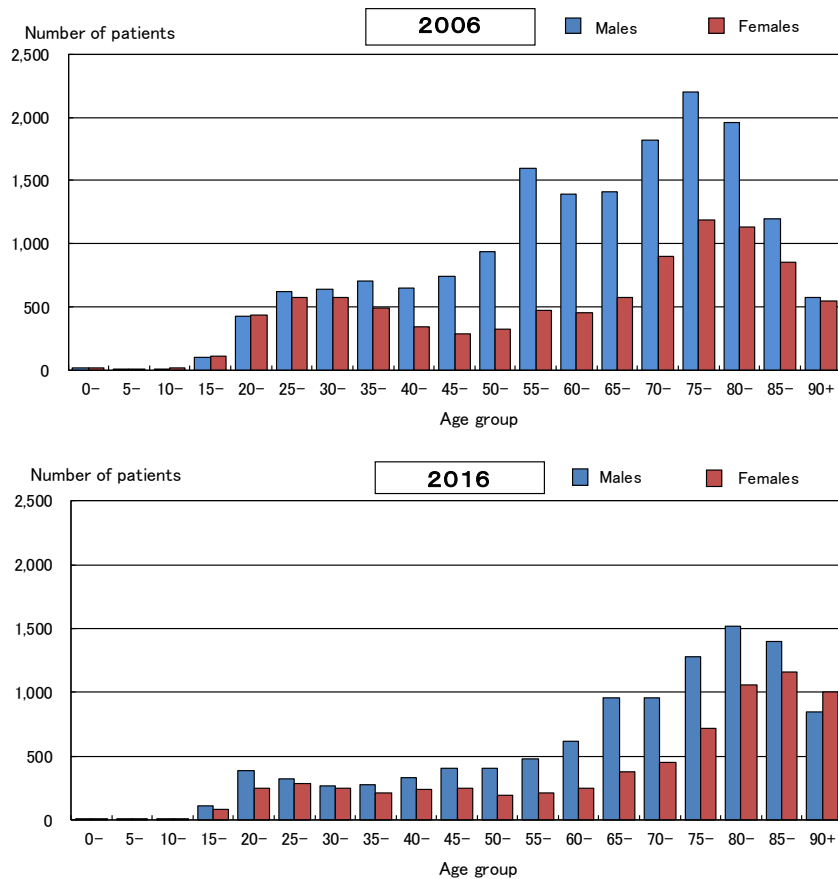


Fig. 2 Age distribution of newly notified tuberculosis patients by sex in Japan, in 2006 and in 2016

Table 1 Number of newly notified tuberculosis patients (all forms, new and re-treatment, pulmonary and extra-pulmonary), by age group, in Japan, 2012–2016

Age group	Tuberculosis notifications, all forms (*1)	Tuberculosis notification rates, all forms (*2)	New tuberculosis												Re-treatment tuberculosis																																														
			Pulmonary tuberculosis						Extra-pulmonary tuberculosis						Pulmonary tuberculosis						Extra-pulmonary tuberculosis																																								
			Sputum-smear positive			Sputum-smear negative			Sputum-smear positive			Sputum-smear negative			Sputum-smear positive			Sputum-smear negative			Sputum-smear positive			Sputum-smear negative																																					
			2012	2013	2014	2015	2016	Rate	2012	2013	2014	2015	2016	Rate	2012	2013	2014	2015	2016	Rate	2012	2013	2014	2015	2016	Rate	2012	2013	2014	2015	2016	Rate	2012	2013	2014	2015	2016	Rate																							
Total	21,283	20,495	19,615	18,280	17,625	16.7	16.1	15.4	14.4	13.9	7,663	7,584	7,153	6,676	6,281	5,350	5,174	4,937	4,819	4,777	2,132	2,041	1,918	1,638	1,709	193	160	173	139	106	4,609	4,274	4,255	3,976	3,844	574	535	498	455	361	336	296	296	264	249	162	163	157	119	115	22	19	17	13	10	242	249	211	181	173	
0-4	63	66	49	51	59	0.4	0.4	0.3	0.3	0.4	4	0	1	2	2	4	14	11	12	12	30	26	18	17	20	6	1	4	2	5	16	20	13	16	18	1	0	0	0	1	0	1	0	0	0	0	1	3	1	1	1	0	0	0	1	0	1	1	1	0	0
15-19	165	165	168	163	190	2.7	2.7	2.8	2.8	3.1	38	44	31	40	45	40	37	54	47	48	46	45	50	37	69	4	4	4	3	4	23	21	15	29	14	2	5	5	1	2	5	1	3	2	5	4	5	3	0	2	1	1	0	1	1	2	0	1	2		
20-29	1,288	1,196	1,188	1,127	1,235	9.7	9.1	9.2	9.0	9.8	320	345	321	277	269	387	346	356	378	420	304	302	277	271	320	23	15	18	12	19	188	144	164	151	160	17	12	8	15	13	18	16	15	12	11	16	7	20	9	9	2	2	1	0	1	13	7	8	2	13	
30-39	1,528	1,317	1,235	1,101	1,004	8.9	7.9	7.7	7.1	6.5	423	393	323	327	269	439	379	371	313	320	310	261	255	202	207	19	17	16	12	7	258	200	202	192	157	25	19	18	21	13	19	13	14	20	12	14	15	12	2	10	2	1	2	0	0	19	19	22	12	9	
40-49	1,600	1,496	1,440	1,363	1,228	9.1	8.3	7.8	7.5	6.5	514	495	453	426	363	428	418	416	396	360	244	227	229	188	198	22	16	20	10	12	286	266	234	243	228	41	28	27	28	23	28	12	18	22	13	13	10	19	15	16	1	2	0	4	1	23	22	24	21	14	
50-59	1,795	1,665	1,514	1,351	1,295	11.5	10.8	9.8	8.8	8.4	631	606	550	501	433	462	429	366	357	380	239	207	187	156	151	23	15	24	14	6	323	270	277	234	243	49	57	47	34	20	28	34	23	26	26	21	18	21	5	12	3	3	3	5	16	26	16	21	19		
60-69	3,012	2,833	2,597	2,359	2,213	16.3	15.4	14.3	13.1	12.0	1,083	1,045	936	858	792	742	716	656	616	566	306	283	253	241	205	38	29	23	20	26	644	556	547	476	498	78	74	74	77	60	55	41	52	26	23	33	41	23	19	18	5	5	2	3	1	28	43	31	23	24	
70-79	4,595	4,359	4,028	3,757	3,407	33.7	31.4	28.4	26.9	24.5	1,657	1,572	1,465	1,323	1,184	1,082	1,064	961	966	856	333	340	297	257	258	33	30	30	26	6	1,163	1,081	1,017	974	917	144	110	113	85	68	80	75	65	58	53	27	29	32	28	26	5	4	4	1	0	71	54	44	39	39	
80-89	5,753	5,856	5,753	5,317	5,138	77.6	76.2	72.5	66.0	60.8	2,339	2,426	2,389	2,194	2,095	1,400	1,392	1,309	1,289	1,321	261	290	290	216	228	23	32	30	23	19	1,357	1,354	1,401	1,280	1,219	193	184	168	153	120	87	85	85	81	78	28	29	20	28	18	2	1	4	1	0	63	63	57	52	40	
90+	1,484	1,542	1,643	1,691	1,856	97.1	95.6	95.7	92.0	96.3	654	658	684	728	829	366	379	437	445	494	59	60	62	53	53	2	1	4	7	2	351	362	385	381	390	24	46	38	41	41	16	18	21	17	28	5	6	4	9	5	0	0	0	0	1	7	12	8	10	13	

\*1: All forms include new and re-treatment tuberculosis patients.

\*2: Rate per 100,000 population

Table 2 Newly notified latent tuberculosis infection (LTBI) patients, by sex and age group, in Japan, from 2014 to 2016

Age group	2014					2015					2016				
	Total	Sex		Ratio of F/M	%	Total	Sex		Ratio of F/M	%	Total	Sex		Ratio of F/M	%
		Males	Females				Males	Females				Males	Females		
Total	7,562	3,448	4,114	100	1.2	6,675	3,046	3,629	100	1.2	7,477	3,605	3,872	100	1.1
0-4	514	247	267	6.8	1.1	420	182	238	6.3	1.3	419	203	216	5.6	1.1
5-9	140	62	78	1.9	1.3	131	67	64	2.0	1.0	96	48	48	1.3	1.0
10-14	86	45	41	1.1	0.9	110	59	51	1.6	0.9	83	46	37	1.1	0.8
15-19	173	83	90	2.3	1.1	124	55	69	1.9	1.3	162	93	69	2.2	0.7
20-24	479	195	284	6.3	1.5	342	138	204	5.1	1.5	403	189	214	5.4	1.1
25-29	538	224	314	7.1	1.4	404	169	235	6.1	1.4	493	238	255	6.6	1.1
30-34	555	238	317	7.3	1.3	444	189	255	6.7	1.3	445	189	256	6.0	1.4
35-39	607	267	340	8.0	1.3	489	193	296	7.3	1.5	443	185	258	5.9	1.4
40-44	681	266	415	9.0	1.6	499	210	289	7.5	1.4	541	226	315	7.2	1.4
45-49	666	299	367	8.8	1.2	543	216	327	8.1	1.5	607	269	338	8.1	1.3
50-54	602	237	365	8.0	1.5	543	222	321	8.1	1.4	584	239	345	7.8	1.4
55-59	610	274	336	8.1	1.2	520	247	273	7.8	1.1	616	270	346	8.2	1.3
60-64	618	298	320	8.2	1.1	497	243	254	7.4	1.0	578	301	277	7.7	0.9
65-69	432	248	184	5.7	0.7	523	280	243	7.8	0.9	683	382	301	9.1	0.8
70+	861	465	396	11.4	0.9	1,086	576	510	16.3	0.9	1,324	727	597	17.7	0.8

Ratio of F/M: Ratio of female patients to male patients

%. proportion

Table 3.1 Newly notified tuberculosis patients by affected organ, sex and age group, in Japan, from 1998 to 2016

Sex, Age-group, in 2016	Tuberculosis notifications, all forms	Pulmonary tuberculosis				Extra-pulmonary tuberculosis																
		Lungs	Bronchi	Pharynx / Larynx	Miliary	Pleuras	Empyema	Hilar - Mediastinal lymph node	Other lymph nodes	Menin- ges	Intes- tines	Verte- brae	Other joints / bones	Kidneys / Urinary tracts	Genitals	Skins	Eyes	Ears	Perito- neum	Pericar- dium	Other organs	
Total	17,825	14,014 (79.5)	119 (0.7)	44 (0.2)	633 (3.6)	3,141 (17.8)	30 (0.2)	121 (0.7)	835 (4.7)	164 (0.9)	264 (1.5)	194 (1.1)	101 (0.6)	83 (0.5)	19 (0.1)	80 (0.5)	25 (0.1)	15 (0.1)	184 (1.0)	81 (0.5)	149 (0.8)	
Male	10,594	8,678 (81.9)	43 (0.4)	28 (0.3)	246 (2.3)	2,087 (19.7)	21 (0.2)	58 (0.5)	262 (2.5)	103 (1.0)	110 (1.0)	88 (0.8)	44 (0.4)	39 (0.4)	14 (0.1)	33 (0.3)	14 (0.1)	3 (0.0)	93 (0.9)	59 (0.6)	79 (0.7)	
Female	7,031	5,336 (75.9)	76 (1.1)	16 (0.2)	387 (5.5)	1,054 (15.0)	9 (0.1)	63 (0.9)	573 (8.1)	61 (0.9)	154 (2.2)	106 (1.5)	57 (0.8)	44 (0.6)	5 (0.1)	47 (0.7)	11 (0.2)	12 (0.2)	91 (1.3)	22 (0.3)	70 (1.0)	
0-14	59	40 (67.8)	2 (3.4)	0 (0.0)	1 (1.7)	3 (5.1)	0 (0.0)	8 (13.6)	8 (13.6)	2 (3.4)	0 (0.0)	0 (0.0)	1 (1.7)	0 (0.0)	0 (0.0)	0 (0.0)	0 (0.0)	0 (0.0)	0 (0.0)	0 (0.0)	0 (0.0)	
15-19	190	176 (92.6)	2 (1.1)	2 (1.1)	0 (0.0)	15 (7.9)	1 (0.5)	4 (2.1)	8 (4.2)	1 (0.5)	0 (0.0)	0 (0.0)	1 (0.5)	0 (0.0)	0 (0.0)	0 (0.0)	0 (0.0)	0 (0.0)	1 (0.5)	0 (0.0)	0 (0.0)	
20-29	1,235	1,072 (86.8)	11 (0.9)	2 (0.2)	8 (0.6)	143 (11.6)	1 (0.1)	19 (1.5)	99 (8.0)	7 (0.6)	9 (0.7)	10 (0.8)	3 (0.2)	2 (0.2)	0 (0.0)	3 (0.2)	0 (0.0)	1 (0.1)	10 (0.8)	1 (0.1)	6 (0.5)	
30-39	1,004	843 (84.0)	11 (1.1)	3 (0.3)	16 (1.6)	107 (10.7)	2 (0.2)	8 (0.8)	75 (7.5)	14 (1.4)	12 (1.2)	6 (0.6)	3 (0.3)	2 (0.2)	2 (0.2)	3 (0.3)	5 (0.5)	3 (0.3)	8 (0.8)	2 (0.2)	11 (1.1)	
40-49	1,228	992 (80.8)	13 (1.1)	7 (0.6)	12 (1.0)	150 (12.2)	3 (0.2)	15 (1.2)	87 (7.1)	18 (1.5)	22 (1.8)	3 (0.2)	6 (0.5)	1 (0.1)	1 (0.1)	2 (0.2)	5 (0.4)	3 (0.2)	14 (1.1)	0 (0.0)	8 (0.7)	
50-59	1,295	1,052 (81.2)	7 (0.5)	3 (0.2)	26 (2.0)	155 (12.0)	3 (0.2)	7 (0.5)	66 (5.1)	12 (0.9)	42 (3.2)	14 (1.1)	10 (0.8)	12 (0.9)	5 (0.4)	6 (0.5)	4 (0.3)	1 (0.1)	14 (1.1)	1 (0.1)	25 (1.9)	
60-69	2,213	1,721 (77.8)	11 (0.5)	8 (0.4)	50 (2.3)	354 (16.0)	5 (0.2)	18 (0.8)	128 (5.8)	25 (1.1)	44 (2.0)	29 (1.3)	14 (0.6)	15 (0.7)	2 (0.1)	13 (0.6)	6 (0.3)	3 (0.1)	19 (0.9)	11 (0.5)	23 (1.0)	
70-79	3,407	2,535 (74.4)	25 (0.7)	7 (0.2)	135 (4.0)	643 (18.9)	5 (0.1)	32 (0.9)	181 (5.3)	42 (1.2)	72 (2.1)	61 (1.8)	23 (0.7)	29 (0.9)	1 (0.0)	23 (0.7)	4 (0.1)	2 (0.1)	46 (1.4)	29 (0.9)	43 (1.3)	
80-89	5,138	4,066 (79.1)	31 (0.6)	9 (0.2)	289 (5.6)	1,113 (21.7)	8 (0.2)	8 (0.2)	164 (3.2)	35 (0.7)	53 (1.0)	63 (1.2)	27 (0.5)	18 (0.4)	8 (0.2)	22 (0.4)	1 (0.0)	1 (0.0)	59 (1.1)	31 (0.6)	25 (0.5)	
90+	1,856	1,517 (81.7)	6 (0.3)	3 (0.2)	96 (5.2)	458 (24.7)	2 (0.1)	2 (0.1)	19 (1.0)	8 (0.4)	10 (0.5)	8 (0.4)	13 (0.7)	4 (0.2)	0 (0.0)	8 (0.4)	0 (0.0)	0 (0.0)	14 (0.8)	6 (0.3)	8 (0.4)	
Total	41,033	33,981 (82.8)	-	-	505 (1.2)	5,125 (12.5)	251 (0.6)	136 (0.3)	1,469 (3.6)	154 (0.4)	335 (0.8)	385 (0.9)	328 (0.8)	227 (0.6)	78 (0.2)	100 (0.2)	12 (0.0)	25 (0.1)	-	-	692 (1.7)	
1998	43,818	36,190 (82.6)	-	-	603 (1.4)	5,586 (12.7)	221 (0.5)	143 (0.3)	1,538 (3.5)	163 (0.4)	345 (0.8)	334 (0.8)	300 (0.7)	179 (0.4)	96 (0.2)	94 (0.2)	13 (0.0)	28 (0.1)	-	-	684 (1.6)	
1999	39,384	32,338 (82.1)	-	-	597 (1.5)	5,108 (13.0)	202 (0.5)	123 (0.3)	1,432 (3.6)	158 (0.4)	356 (0.9)	319 (0.8)	272 (0.7)	181 (0.5)	72 (0.2)	123 (0.3)	16 (0.0)	38 (0.1)	-	-	656 (1.7)	
2000	35,489	28,868 (81.3)	-	-	642 (1.8)	4,840 (13.6)	162 (0.5)	102 (0.3)	1,368 (3.9)	177 (0.5)	275 (0.8)	276 (0.8)	274 (0.8)	172 (0.5)	72 (0.2)	104 (0.3)	11 (0.0)	25 (0.1)	-	-	619 (1.7)	
2001	32,828	26,472 (80.6)	-	-	626 (1.9)	4,666 (14.2)	152 (0.5)	84 (0.3)	1,269 (3.9)	188 (0.6)	323 (1.0)	299 (0.9)	222 (0.7)	148 (0.5)	66 (0.2)	100 (0.3)	19 (0.1)	29 (0.1)	-	-	544 (1.7)	
2002	31,638	25,478 (80.5)	-	-	639 (2.0)	4,539 (14.3)	142 (0.4)	83 (0.3)	1,341 (4.2)	149 (0.5)	276 (0.9)	268 (0.8)	223 (0.7)	144 (0.5)	47 (0.1)	87 (0.3)	15 (0.0)	28 (0.1)	-	-	570 (1.8)	
2003	29,736	23,829 (80.1)	-	-	617 (2.1)	4,491 (15.1)	125 (0.4)	70 (0.2)	1,293 (4.3)	160 (0.5)	299 (1.0)	275 (0.9)	220 (0.7)	112 (0.4)	53 (0.2)	95 (0.3)	13 (0.0)	30 (0.1)	-	-	564 (1.9)	
2004	28,319	22,655 (80.0)	-	-	585 (2.1)	4,338 (15.3)	115 (0.4)	88 (0.3)	1,151 (4.1)	180 (0.6)	296 (1.0)	233 (0.8)	201 (0.7)	130 (0.5)	37 (0.1)	98 (0.3)	11 (0.0)	33 (0.1)	-	-	536 (1.9)	
2005	26,384	20,856 (79.0)	-	-	616 (2.3)	4,192 (15.9)	97 (0.4)	79 (0.3)	1,191 (4.5)	127 (0.5)	263 (1.0)	248 (0.9)	231 (0.9)	112 (0.4)	40 (0.2)	109 (0.4)	9 (0.0)	24 (0.1)	-	-	554 (2.1)	
2006	25,311	20,264 (80.1)	108 (0.4)	31 (0.1)	602 (2.4)	4,134 (16.3)	75 (0.3)	57 (0.2)	1,186 (4.7)	153 (0.6)	328 (1.3)	232 (0.9)	190 (0.8)	108 (0.4)	34 (0.1)	92 (0.4)	19 (0.1)	18 (0.1)	92 (0.4)	61 (0.2)	281 (1.1)	
2007	24,760	19,780 (79.9)	117 (0.5)	43 (0.2)	570 (2.3)	4,001 (16.2)	78 (0.3)	68 (0.3)	1,194 (4.8)	171 (0.7)	292 (1.2)	273 (1.1)	170 (0.7)	121 (0.5)	34 (0.1)	92 (0.4)	13 (0.1)	29 (0.1)	144 (0.6)	80 (0.3)	181 (0.7)	
2008	24,170	19,278 (79.8)	121 (0.5)	36 (0.1)	604 (2.5)	3,940 (16.3)	63 (0.3)	73 (0.3)	1,221 (5.1)	162 (0.7)	321 (1.3)	241 (1.0)	182 (0.8)	100 (0.4)	23 (0.1)	121 (0.5)	26 (0.1)	22 (0.1)	168 (0.7)	88 (0.4)	179 (0.7)	
2009	23,261	18,735 (80.5)	127 (0.5)	53 (0.2)	598 (2.6)	3,959 (17.0)	48 (0.2)	74 (0.3)	1,158 (5.0)	138 (0.6)	330 (1.4)	239 (1.0)	159 (0.7)	88 (0.4)	35 (0.2)	97 (0.4)	29 (0.1)	12 (0.1)	154 (0.7)	76 (0.3)	171 (0.7)	
2010	22,681	17,969 (79.2)	129 (0.6)	57 (0.3)	695 (3.1)	3,929 (17.3)	52 (0.2)	70 (0.3)	1,199 (5.3)	156 (0.7)	317 (1.4)	250 (1.1)	145 (0.6)	83 (0.4)	22 (0.1)	89 (0.4)	27 (0.1)	21 (0.1)	173 (0.8)	89 (0.4)	187 (0.8)	
2011	21,283	16,826 (79.1)	107 (0.5)	46 (0.2)	608 (2.9)	3,853 (17.2)	63 (0.3)	134 (0.6)	1,038 (4.9)	152 (0.7)	348 (1.6)	255 (1.2)	157 (0.7)	82 (0.4)	20 (0.1)	97 (0.5)	34 (0.2)	16 (0.1)	176 (0.8)	80 (0.4)	166 (0.8)	
2012	20,495	16,380 (79.9)	131 (0.6)	34 (0.2)	635 (3.1)	3,634 (17.7)	48 (0.2)	128 (0.6)	972 (4.7)	181 (0.9)	298 (1.5)	228 (1.1)	138 (0.7)	74 (0.4)	29 (0.1)	87 (0.4)	22 (0.1)	17 (0.1)	190 (0.9)	87 (0.4)	153 (0.7)	
2013	18,280	14,581 (79.8)	119 (0.7)	43 (0.2)	631 (3.5)	3,277 (17.9)	46 (0.3)	128 (0.7)	813 (4.4)	166 (0.9)	248 (1.4)	192 (1.1)	98 (0.5)	73 (0.4)	21 (0.1)	87 (0.5)	20 (0.1)	19 (0.1)	176 (1.0)	69 (0.4)	134 (0.7)	
2014	17,825	14,014 (79.5)	119 (0.7)	44 (0.2)	633 (3.6)	3,141 (17.8)	30 (0.2)	121 (0.7)	835 (4.7)	164 (0.9)	264 (1.5)	194 (1.1)	101 (0.6)	83 (0.5)	19 (0.1)	80 (0.5)	25 (0.1)	15 (0.1)	184 (1.0)	81 (0.5)	149 (0.8)	

Note1: Cases having multiple organs are counted independently.

Note2: Numbers in brackets indicate the proportion out of the total number of newly notified tuberculosis cases (all forms) for each sex and age group.

Table 3.2 Number and proportio of miliary tuberculosis by age group and sex, 2004–2016

		Age group tota		0–9 yrs	10–19 yrs	20–29 yrs	30–39 yrs	40–49 yrs	50–59 yrs	60–69 yrs	70–79 yrs	80 yrs+
year		n (%)	n (%)	n (%)	n (%)	n (%)	n (%)	n (%)	n (%)	n (%)	n (%)	n (%)
Total	2004	617 (2.1)	0 (0.0)	6 (1.8)	19 (0.8)	22 (0.8)	24 (1.0)	44 (1.1)	82 (1.8)	199 (2.9)	221 (3.6)	
	2005	585 (2.1)	1 (1.3)	3 (0.9)	13 (0.6)	38 (1.4)	25 (1.1)	41 (1.1)	77 (1.8)	180 (2.8)	207 (3.2)	
	2006	616 (2.3)	1 (1.9)	1 (0.4)	19 (0.9)	24 (1.0)	27 (1.3)	42 (1.3)	84 (2.2)	173 (2.8)	245 (3.9)	
	2007	602 (2.4)	0 (0.0)	2 (0.9)	10 (0.5)	20 (0.9)	23 (1.2)	26 (0.9)	75 (2.0)	190 (3.4)	256 (4.0)	
	2008	570 (2.3)	1 (1.4)	1 (0.5)	17 (0.9)	18 (0.8)	21 (1.1)	40 (1.4)	64 (1.7)	162 (2.9)	246 (3.7)	
	2009	604 (2.5)	3 (6.4)	2 (0.9)	6 (0.4)	26 (1.2)	25 (1.4)	38 (1.5)	68 (1.9)	164 (3.2)	272 (3.9)	
	2010	598 (2.6)	0 (0.0)	2 (0.7)	11 (0.7)	20 (1.0)	22 (1.2)	23 (1.1)	80 (2.2)	139 (2.8)	301 (4.4)	
	2011	695 (3.1)	1 (1.9)	2 (1.1)	18 (1.3)	21 (1.2)	28 (1.5)	27 (1.3)	58 (1.8)	155 (3.2)	385 (5.3)	
	2012	608 (2.9)	0 (0.0)	2 (1.1)	4 (0.3)	10 (0.7)	20 (1.3)	28 (1.6)	53 (1.8)	147 (3.2)	344 (4.8)	
	2013	635 (3.1)	0 (0.0)	4 (2.1)	9 (0.8)	21 (1.6)	15 (1.0)	23 (1.4)	59 (2.1)	151 (3.5)	353 (4.8)	
	2014	642 (3.3)	1 (3.1)	2 (1.1)	7 (0.6)	15 (1.2)	12 (0.8)	23 (1.5)	53 (2.0)	133 (3.3)	396 (5.4)	
	2015	631 (3.5)	0 (0.0)	2 (1.1)	11 (1.0)	8 (0.7)	24 (1.8)	17 (1.3)	36 (1.5)	153 (4.1)	380 (5.4)	
	2016	633 (3.6)	1 (2.7)	0 (0.0)	8 (0.6)	16 (1.6)	12 (1.0)	26 (2.0)	50 (2.3)	135 (4.0)	385 (5.5)	
Males	2004	282 (1.5)	0 (0.0)	2 (1.3)	10 (0.8)	15 (0.9)	21 (1.3)	32 (1.1)	49 (1.5)	78 (1.7)	75 (2.1)	
	2005	269 (1.5)	1 (2.2)	2 (1.2)	7 (0.6)	24 (1.5)	15 (1.0)	23 (0.8)	47 (1.5)	83 (2.0)	67 (1.8)	
	2006	309 (1.8)	0 (0.0)	1 (0.9)	12 (1.1)	17 (1.3)	23 (1.6)	34 (1.3)	55 (2.0)	78 (1.9)	89 (2.4)	
	2007	250 (1.5)	0 (0.0)	2 (1.8)	6 (0.6)	13 (1.0)	14 (1.1)	16 (0.7)	45 (1.7)	76 (2.0)	78 (2.0)	
	2008	241 (1.5)	0 (0.0)	1 (0.9)	13 (1.4)	12 (1.0)	17 (1.4)	26 (1.3)	39 (1.5)	65 (1.8)	68 (1.8)	
	2009	211 (1.4)	0 (0.0)	1 (1.0)	2 (0.2)	18 (1.6)	18 (1.5)	21 (1.2)	26 (1.0)	57 (1.7)	68 (1.7)	
	2010	232 (1.6)	0 (0.0)	2 (1.3)	7 (0.8)	11 (1.1)	19 (1.6)	14 (0.9)	40 (1.5)	54 (1.7)	85 (2.1)	
	2011	283 (2.0)	1 (4.2)	0 (0.0)	12 (1.6)	14 (1.6)	17 (1.5)	18 (1.2)	34 (1.5)	66 (2.1)	121 (2.9)	
	2012	243 (1.9)	0 (0.0)	1 (1.0)	4 (0.6)	7 (0.8)	17 (1.7)	22 (1.7)	33 (1.6)	46 (1.6)	113 (2.8)	
	2013	234 (1.9)	0 (0.0)	2 (2.0)	2 (0.3)	14 (2.0)	7 (0.8)	12 (1.0)	34 (1.7)	52 (1.8)	111 (2.7)	
	2014	249 (2.1)	0 (0.0)	1 (1.1)	3 (0.5)	7 (1.0)	7 (0.8)	9 (0.9)	41 (2.2)	66 (2.5)	115 (2.8)	
	2015	231 (2.1)	0 (0.0)	1 (1.1)	6 (1.0)	7 (1.2)	19 (2.3)	11 (1.2)	20 (1.2)	65 (2.6)	102 (2.7)	
	2016	246 (2.3)	1 (4.8)	0 (0.0)	5 (0.7)	11 (2.0)	7 (0.9)	14 (1.6)	26 (1.6)	60 (2.7)	122 (3.2)	
Females	2004	335 (3.2)	0 (0.0)	4 (2.2)	9 (0.7)	7 (0.6)	3 (0.4)	12 (1.2)	33 (2.4)	121 (5.3)	146 (5.5)	
	2005	316 (3.1)	0 (0.0)	1 (0.6)	6 (0.5)	14 (1.3)	10 (1.5)	18 (2.0)	30 (2.5)	97 (4.5)	140 (5.3)	
	2006	307 (3.3)	1 (4.0)	0 (0.0)	7 (0.7)	7 (0.7)	4 (0.6)	8 (1.0)	29 (2.8)	95 (4.6)	156 (6.1)	
	2007	352 (3.9)	0 (0.0)	0 (0.0)	4 (0.4)	7 (0.7)	9 (1.4)	10 (1.4)	30 (2.9)	114 (5.9)	178 (6.7)	
	2008	329 (3.6)	1 (3.3)	0 (0.0)	4 (0.4)	6 (0.6)	4 (0.6)	14 (2.0)	25 (2.4)	97 (5.2)	178 (6.4)	
	2009	393 (4.3)	3 (10.7)	1 (0.8)	4 (0.5)	8 (0.8)	7 (1.0)	17 (2.3)	42 (4.2)	107 (5.9)	204 (6.7)	
	2010	366 (4.2)	0 (0.0)	0 (0.0)	4 (0.6)	9 (1.0)	3 (0.5)	9 (1.5)	40 (4.0)	85 (4.9)	216 (7.3)	
	2011	412 (4.7)	0 (0.0)	2 (2.0)	6 (0.9)	7 (0.8)	11 (1.7)	9 (1.5)	24 (2.5)	89 (5.2)	264 (8.5)	
	2012	365 (4.4)	0 (0.0)	1 (1.2)	0 (0.0)	3 (0.4)	3 (0.5)	6 (1.2)	20 (2.3)	101 (6.1)	231 (7.1)	
	2013	401 (5.0)	0 (0.0)	2 (2.2)	7 (1.2)	7 (1.2)	8 (1.4)	11 (2.1)	25 (3.0)	99 (6.4)	242 (7.4)	
	2014	393 (5.2)	1 (6.3)	1 (1.1)	4 (0.7)	8 (1.4)	5 (0.9)	14 (2.8)	12 (1.6)	67 (4.9)	281 (8.7)	
	2015	400 (5.6)	0 (0.0)	1 (1.2)	5 (1.0)	1 (0.2)	5 (1.0)	6 (1.4)	16 (2.5)	88 (6.8)	278 (8.8)	
	2016	387 (5.5)	0 (0.0)	0 (0.0)	3 (0.6)	5 (1.1)	5 (1.0)	12 (2.9)	24 (3.8)	75 (6.4)	263 (8.1)	

Note1: Cases having multiple organs are counted independently.

Note2: % indicate proportion out of the total number of newly notified tuberculosis cases for each age group.

## Previous table Newly notified tuberculosis cases by registered month, 2016

Registered month	Active tuberculosis								
	Active pulmonary tuberculosis								
	All active tuberculosis	All active pulmonary tuberculosis	Sputum smear positive			Other bacillary positive	Bacillary negative or bacillary results unknown	Extra-pulmonary	LTBI* on treatment
			All sputum smear positive	New	Retreatment				
Total	17,625	13,608	6,642	6,281	361	5,026	1,940	4,017	7,477
Jan.	1,282	969	468	434	34	368	133	313	432
Feb.	1,335	1,030	530	498	32	356	144	305	514
Mar.	1,462	1,103	536	512	24	416	151	359	643
Apr.	1,542	1,182	580	543	37	428	174	360	565
May	1,517	1,177	581	560	21	432	164	340	653
Jun.	1,611	1,226	588	553	35	443	195	385	739
Jul.	1,528	1,192	593	556	37	458	141	336	635
Aug.	1,609	1,246	618	584	34	470	158	363	711
Sep.	1,491	1,174	580	557	23	422	172	317	674
Oct.	1,424	1,141	580	546	34	382	179	283	674
Nov.	1,380	1,065	505	482	23	411	149	315	590
Dec.	1,444	1,103	483	456	27	440	180	341	647

\* LTBI: Latent Tuberculosis Infection. These are not included in the number of active tuberculosis.

**【Foreign-born】**

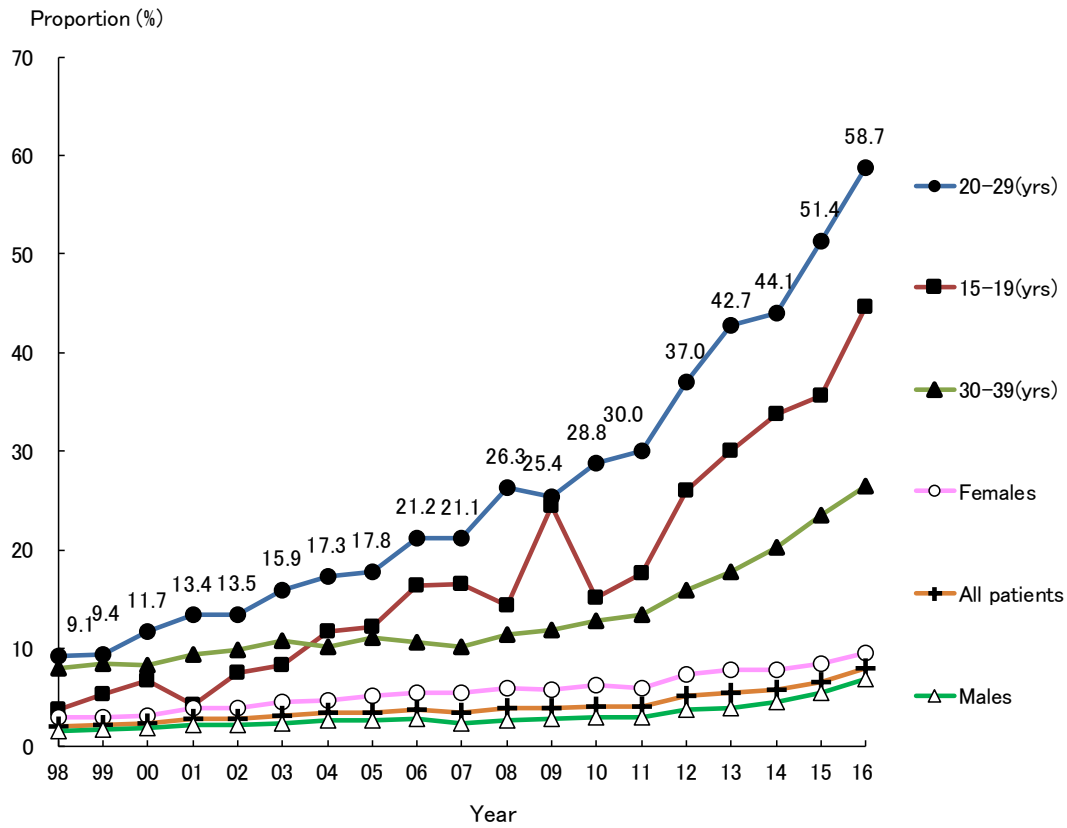


Fig. 3 Annual trend of proportion of foreign-borns among newly notified tuberculosis patients, by sex and age group, from 1998 to 2016  
Those whose country of birth is unknown are excluded from the numerator.

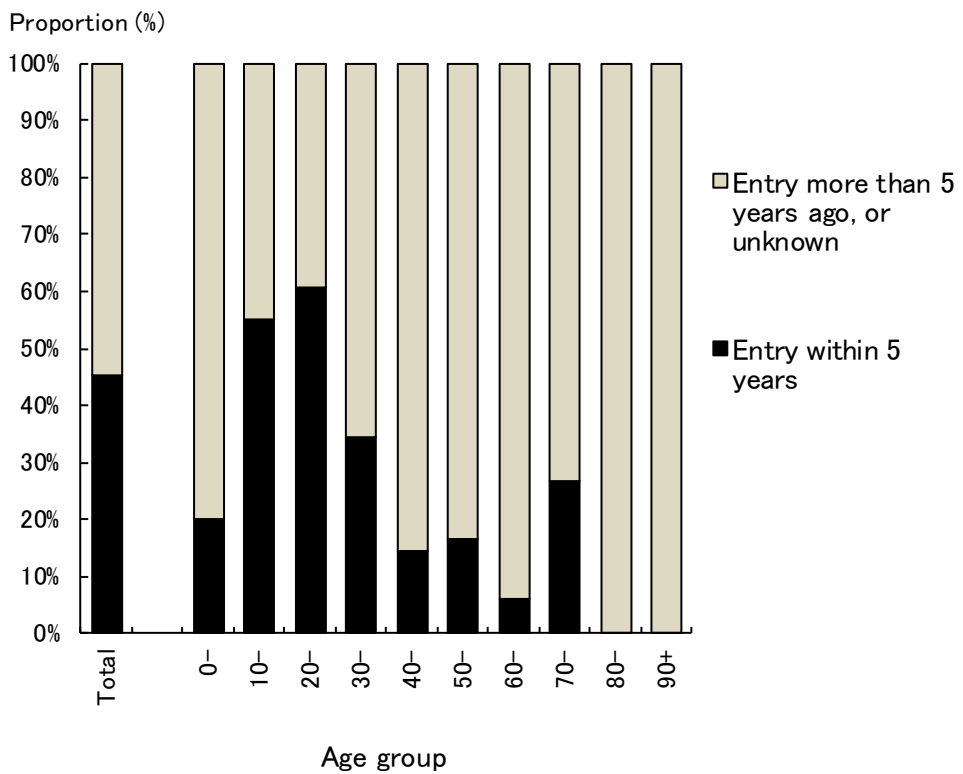


Fig. 4 Proportion of foreign-born tuberculosis patients, by age group and time of entry to Japan, in 2016

Table 4.1 Annual trend of newly notified tuberculosis patients by nationality or country of birth, and by sex, from 1998 to 2016

Year	Number of newly notified tuberculosis patients, all forms	Born in Japan	Foreign nationalities or Foreign borns (*1)	Nationalities or country of birth unknown	Proportion of foreign borns (%) (*2)	Sex (*3)		Ratio of Females to Males
						Males	Females	
1998	41,033	34,382	739	5,912	2.1	365	374	1.0
1999	43,818	37,094	821	5,903	2.2	415	406	1.0
2000	39,384	33,720	837	4,827	2.4	436	401	0.9
2001	35,489	30,305	866	4,318	2.8	442	424	1.0
2002	32,828	28,667	824	3,337	2.8	411	413	1.0
2003	31,638	27,665	906	3,067	3.2	433	473	1.1
2004	29,736	26,205	931	2,600	3.4	479	452	0.9
2005	28,319	25,247	923	2,149	3.5	438	485	1.1
2006	26,384	23,505	920	1,959	3.8	444	476	1.1
2007	25,311	23,451	842	1,018	3.5	364	478	1.3
2008	24,760	23,163	945	652	3.9	416	529	1.3
2009	24,170	22,808	938	424	4.0	414	524	1.3
2010	23,261	21,976	952	333	4.2	424	528	1.2
2011	22,681	21,372	921	388	4.1	416	505	1.2
2012	21,283	19,555	1,069	659	5.2	474	595	1.3
2013	20,495	18,589	1,064	842	5.4	468	596	1.3
2014	19,615	17,727	1,101	787	5.8	531	570	1.1
2015	18,280	16,396	1,164	720	6.6	581	583	1.0
2016	17,625	15,504	1,338	783	7.9	693	645	0.9

\*1: Number of tuberculosis patients with foreign nationalities until 2011, number of foreign-born patients afterwards.

\*2: Proportion of Tuberculosis patients with foreign nationalities until 2011, proportion of foreign-born patients afterwards, excluding those of unknown nationality or country of birth.

\*3: Sex distribution among foreign nationalities or foreign-borns.

Table 4.2 Annual trend of foreign-borns by age group, 1998–2016

year	Age group Total	0–9 yrs		10–19 yrs		20–29 yrs		30–39 yrs		40–49 yrs		50–59 yrs		60–69 yrs		70–79 yrs		80 yrs+	
		n	(%)	n	(%)	n	(%)	n	(%)	n	(%)	n	(%)	n	(%)	n	(%)	n	(%)
1998	739	6	(0.8)	20	(2.7)	300	(40.6)	215	(29.1)	83	(11.2)	44	(6.0)	23	(3.1)	29	(3.9)	19	(2.6)
1999	821	11	(1.3)	27	(3.3)	319	(38.9)	241	(29.4)	89	(10.8)	54	(6.6)	27	(3.3)	35	(4.3)	18	(2.2)
2000	837	14	(1.7)	26	(3.1)	357	(42.7)	235	(28.1)	92	(11.0)	49	(5.9)	23	(2.7)	27	(3.2)	14	(1.7)
2001	866	4	(0.5)	17	(2.0)	361	(41.7)	249	(28.8)	110	(12.7)	55	(6.4)	27	(3.1)	25	(2.9)	18	(2.1)
2002	824	5	(0.6)	24	(2.9)	345	(41.9)	249	(30.2)	81	(9.8)	47	(5.7)	26	(3.2)	24	(2.9)	23	(2.8)
2003	906	9	(1.0)	25	(2.8)	399	(44.0)	268	(29.6)	98	(10.8)	38	(4.2)	22	(2.4)	27	(3.0)	20	(2.2)
2004	931	4	(0.4)	32	(3.4)	402	(43.2)	250	(26.9)	107	(11.5)	59	(6.3)	28	(3.0)	27	(2.9)	22	(2.4)
2005	923	5	(0.5)	37	(4.0)	378	(41.0)	273	(29.6)	105	(11.4)	62	(6.7)	26	(2.8)	16	(1.7)	21	(2.3)
2006	920	5	(0.5)	34	(3.7)	409	(44.5)	234	(25.4)	113	(12.3)	59	(6.4)	35	(3.8)	11	(1.2)	20	(2.2)
2007	842	6	(0.7)	35	(4.2)	390	(46.3)	224	(26.6)	102	(12.1)	43	(5.1)	15	(1.8)	12	(1.4)	15	(1.8)
2008	945	4	(0.4)	27	(2.9)	468	(49.5)	237	(25.1)	114	(12.1)	41	(4.3)	25	(2.6)	10	(1.1)	19	(2.0)
2009	938	2	(0.2)	50	(5.3)	427	(45.5)	243	(25.9)	103	(11.0)	41	(4.4)	30	(3.2)	20	(2.1)	22	(2.3)
2010	952	5	(0.5)	41	(4.3)	438	(46.0)	242	(25.4)	114	(12.0)	39	(4.1)	35	(3.7)	18	(1.9)	20	(2.1)
2011	921	5	(0.5)	30	(3.3)	419	(45.5)	226	(24.5)	126	(13.7)	53	(5.8)	20	(2.2)	19	(2.1)	23	(2.5)
2012	1,069	4	(0.4)	45	(4.2)	468	(43.8)	237	(22.2)	181	(16.9)	63	(5.9)	33	(3.1)	17	(1.6)	21	(2.0)
2013	1,064	3	(0.3)	52	(4.9)	494	(46.4)	225	(21.1)	147	(13.8)	65	(6.1)	30	(2.8)	25	(2.3)	23	(2.2)
2014	1,101	5	(0.5)	59	(5.4)	511	(46.4)	243	(22.1)	151	(13.7)	71	(6.4)	26	(2.4)	16	(1.5)	19	(1.7)
2015	1,164	3	(0.3)	63	(5.4)	565	(48.5)	252	(21.6)	134	(11.5)	74	(6.4)	27	(2.3)	19	(1.6)	27	(2.3)
2016	1,338	5	(0.4)	89	(6.7)	712	(53.2)	258	(19.3)	139	(10.4)	66	(4.9)	33	(2.5)	15	(1.1)	21	(1.6)

Note1: % indicate proportion out of the total number of newly notified foreign-born tuberculosis cases for each age group.

Note2: " Foreign nationalities" until 2011, " Foreign-born" since 2012.

Table 5 Number and proportion of foreign-born tuberculosis patients by country of birth and time of entry to Japan, 2016

Total	Drug resistance				Entry within 5 years	Drug resistance				Entry more than 5 years ago, or unknown	Drug resistance						
	MDR	Any INH resistance	Any RFP resistance	Any resistance*		MDR	Any INH resistance	Any RFP resistance	Any resistance*		MDR	Any INH resistance	Any RFP resistance	Any resistance*			
n (%)	n (%)	n (%)	n (%)	n (%)	n (%)	n (%)	n (%)	n (%)	n (%)	n (%)	n (%)	n (%)	n (%)				
Total	1,338 (100.0)	15 (100.0)	76 (100.0)	20 (100.0)	112 (100.0)	Total	608 (100.0)	9 (100.0)	37 (100.0)	14 (100.0)	58 (100.0)	Total	730 (100.0)	6 (100.0)	39 (100.0)	6 (100.0)	54 (100.0)
Philippines	318 (23.8)	1 (6.7)	21 (27.6)	1 (5.0)	25 (22.3)	ナム Vietnam	138 (22.7)	2 (22.2)	17 (45.9)	4 (28.6)	28 (48.3)	Philippines	231 (31.6)	4 (16.7)	16 (41.0)	19 (35.2)	
China	272 (20.3)	5 (33.3)	19 (25.0)	5 (25.0)	29 (25.9)	China	133 (21.9)	2 (22.2)	10 (27.0)	2 (14.3)	15 (25.9)	China	139 (19.0)	3 (50.0)	9 (23.1)	3 (50.0)	14 (25.9)
Vietnam	212 (15.8)	2 (13.3)	22 (28.9)	4 (20.0)	35 (31.3)	Nepal	87 (14.3)	1 (11.1)	1 (2.7)	1 (7.1)	1 (1.7)	Vietnam	74 (10.1)		5 (12.8)		7 (13.0)
Nepal	135 (10.1)	1 (6.7)	1 (1.3)	1 (5.0)	2 (1.8)	Philippines	87 (14.3)	1 (11.1)	5 (13.5)	1 (7.1)	6 (10.3)	Nepal	48 (6.6)				1 (1.9)
Indonesia	90 (6.7)		2 (2.6)		2 (1.8)	Indonesia	53 (8.7)					Republic of Korea	38 (5.2)		1 (2.6)		3 (5.6)
Myanmar	58 (4.3)	2 (13.3)	5 (6.6)	3 (15.0)	8 (7.1)	Myanmar	35 (5.8)	2 (22.2)	3 (8.1)	3 (21.4)	5 (8.6)	Indonesia	37 (5.1)		2 (5.1)		2 (3.7)
Republic of Korea	45 (3.4)	1 (6.7)	2 (2.6)	2 (10.0)	5 (4.5)	Others	63 (10.4)	1 (11.1)	1 (2.7)	2 (14.3)	2 (3.4)	Myanmar	23 (3.2)		2 (5.1)		3 (5.6)
Thailand	19 (1.4)					Unknown	12 (2.0)			1 (7.1)	1 (1.7)	Thailand	11 (1.5)				
Mongolia	16 (1.2)	2 (13.3)	2 (2.6)	2 (10.0)	2 (1.8)							Others	59 (8.1)	2 (33.3)	3 (7.7)	2 (33.3)	3 (5.6)
Brazil	14 (1.0)											Unknown	70 (9.6)	1 (16.7)	1 (2.6)	1 (16.7)	2 (3.7)
India	12 (0.9)		1 (1.3)		1 (0.9)												
Others	65 (4.9)																
Unknown	82 (6.1)	1 (6.7)	1 (1.3)	2 (10.0)	3 (2.7)												

Only those countries with more than ten tuberculosis cases are listed.

MDR : Multi-drug resistant, i.e., resistant to at least INH and RFP INH: isoniazid RFP: rifampicin

\*: resistant to either INH, RFP, SM, or EB

Table 6 Occupation of foreign-born tuberculosis patients by sex and age group, in Japan, in 2016

Age group	Total	(%)	Service trade workers (%)	Health care workers (%)	Teachers / Nursery staff (%)	Infants / Children (%)	Students (%)	Other regular employees (%)	Other temporary /day laborer (%)	Other self-employed (%)	Housekeepers (%)	Unemployed / Others (%)	Unknown (%)
Total	1,338	(100)	47 (4)	13 (1)	4 (0)	15 (1)	427 (32)	385 (29)	121 (9)	19 (1)	43 (3)	230 (17)	34 (3)
Males	693	(100)	15 (2)	1 (0)	1 (0)	6 (1)	277 (40)	233 (34)	57 (8)	11 (2)	0 (0)	79 (11)	13 (2)
Females	645	(100)	32 (5)	12 (2)	3 (0)	9 (1)	150 (23)	152 (24)	64 (10)	8 (1)	43 (7)	151 (23)	21 (3)
0-14	12	(100)	0 (0)	0 (0)	0 (0)	12 (100)	0 (0)	0 (0)	0 (0)	0 (0)	0 (0)	0 (0)	0 (0)
15-19	82	(100)	0 (0)	0 (0)	0 (0)	3 (4)	60 (73)	9 (11)	6 (7)	0 (0)	0 (0)	4 (5)	0 (0)
20-24	389	(100)	7 (2)	0 (0)	0 (0)	0 (0)	225 (58)	101 (26)	19 (5)	2 (1)	2 (1)	30 (8)	3 (1)
25-29	323	(100)	7 (2)	2 (1)	0 (0)	0 (0)	111 (34)	127 (39)	26 (8)	4 (1)	4 (1)	38 (12)	4 (1)
30-34	155	(100)	17 (11)	1 (1)	2 (1)	0 (0)	21 (14)	51 (33)	17 (11)	3 (2)	13 (8)	26 (17)	4 (3)
35-39	103	(100)	6 (6)	2 (2)	1 (1)	0 (0)	6 (6)	37 (36)	15 (15)	1 (1)	7 (7)	22 (21)	6 (6)
40-44	72	(100)	4 (6)	2 (3)	0 (0)	0 (0)	4 (6)	22 (31)	11 (15)	0 (0)	10 (14)	16 (22)	3 (4)
45-49	67	(100)	3 (4)	5 (7)	0 (0)	0 (0)	0 (0)	16 (24)	15 (22)	3 (4)	4 (6)	13 (19)	8 (12)
50-54	40	(100)	0 (0)	1 (3)	0 (0)	0 (0)	0 (0)	17 (43)	3 (8)	3 (8)	1 (3)	15 (38)	0 (0)
55-59	26	(100)	2 (8)	0 (0)	1 (4)	0 (0)	0 (0)	5 (19)	5 (19)	1 (4)	0 (0)	10 (38)	2 (8)
60+	69	(100)	1 (1)	0 (0)	0 (0)	0 (0)	0 (0)	0 (0)	4 (6)	2 (3)	2 (3)	56 (81)	4 (6)

Previous table Trend of newly notified foreign nationals with TB by year and age group,  
1998-2016

Year	All foreigners	Age group							Percentage of 20-29 yrs in total
		0-14	15-19	20-29	30-39	40-49	50-59	60+	
1998	739	11	15	300	215	83	44	71	40.6
1999	821	13	25	319	241	89	54	80	38.9
2000	837	16	24	357	235	92	49	64	42.7
2001	866	6	15	361	249	110	55	70	41.7
2002	824	6	23	345	249	81	47	73	41.9
2003	906	12	22	399	268	98	38	69	44.0
2004	931	6	30	402	250	107	59	77	43.2
2005	923	9	33	378	273	105	62	63	41.0
2006	920	6	33	409	234	113	59	66	44.5
2007	842	9	32	390	224	102	43	42	46.3
2008	945	5	26	468	237	114	41	54	49.5
2009	938	3	49	427	243	103	41	72	45.5
2010	952	9	37	438	242	114	39	73	46.0
2011	921	8	27	419	226	126	53	62	45.5
2012	1069	7	42	468	237	181	63	71	43.8
2013	1064	7	48	494	225	147	65	78	46.4
2014	1101	8	56	511	243	151	71	61	46.4
2015	1164	9	57	565	252	134	74	73	48.5
2016	1338	12	82	712	258	139	66	69	36.0

Number of tuberculosis patients with foreign nationalities until 2011, number of foreign-born patients afterwards.



Previous table Distribution of foreign nationals with tuberculosis by prefecture and designated city, 2016

	Newly notified patients	Foreign born	Proportion (%)
Japan	17625	1338	7.6
Fukuoka city	192	35	18.2
Gunma	183	32	17.5
Shizuoka	223	35	15.7
Hiroshima	215	31	14.4
Okayama city	77	11	14.3
Sagamihara city	57	8	14.0
Tokyo	2340	308	13.2
Aichi	776	87	11.2
Sendai city	87	9	10.3
Shizuoka city	97	10	10.3
Niigata city	79	8	10.1
Tochigi	218	22	10.1
Gifu	329	33	10.0
Ymaguchi	178	17	9.6
Hamamatsu city	105	10	9.5
Mie	241	22	9.1
Chiba	748	68	9.1
Ibaraki	354	32	9.0
Saitama city	182	16	8.8
Toyama	117	10	8.5
Yamanashi	72	6	8.3
Kanagawa	348	28	8.0
Shimane	87	7	8.0
Niigata	137	11	8.0
Nagano	165	13	7.9
Saitama	797	61	7.7
Kawasaki city	249	19	7.6
Totori	66	5	7.6
Nagoya city	494	36	7.3
Shiga	152	11	7.2
Fukui	87	6	6.9
Okinawa	203	14	6.9
Kobe city	285	19	6.7
Kagawa	138	9	6.5
Yamagata	80	5	6.3
Yokohama city	538	33	6.1
Miyagi	98	6	6.1
Kumamoto	147	9	6.1
Ehime	133	8	6.0
Oita	185	11	5.9
Nara	191	11	5.8
Chiba city	158	9	5.7
Ishikawa	126	7	5.6
Hiroshima city	109	6	5.5

Those prefectures and designated cities with 5% or more tuberculosis cases with foreign nationals are listed.

The figures of prefectures do not include those cases registered to designated cities in the respective prefecture, if applicable.

E.g., the figure of Kanagawa prefecture does not include those of Yokohama and Kawasaki cities.