

【Childhood】

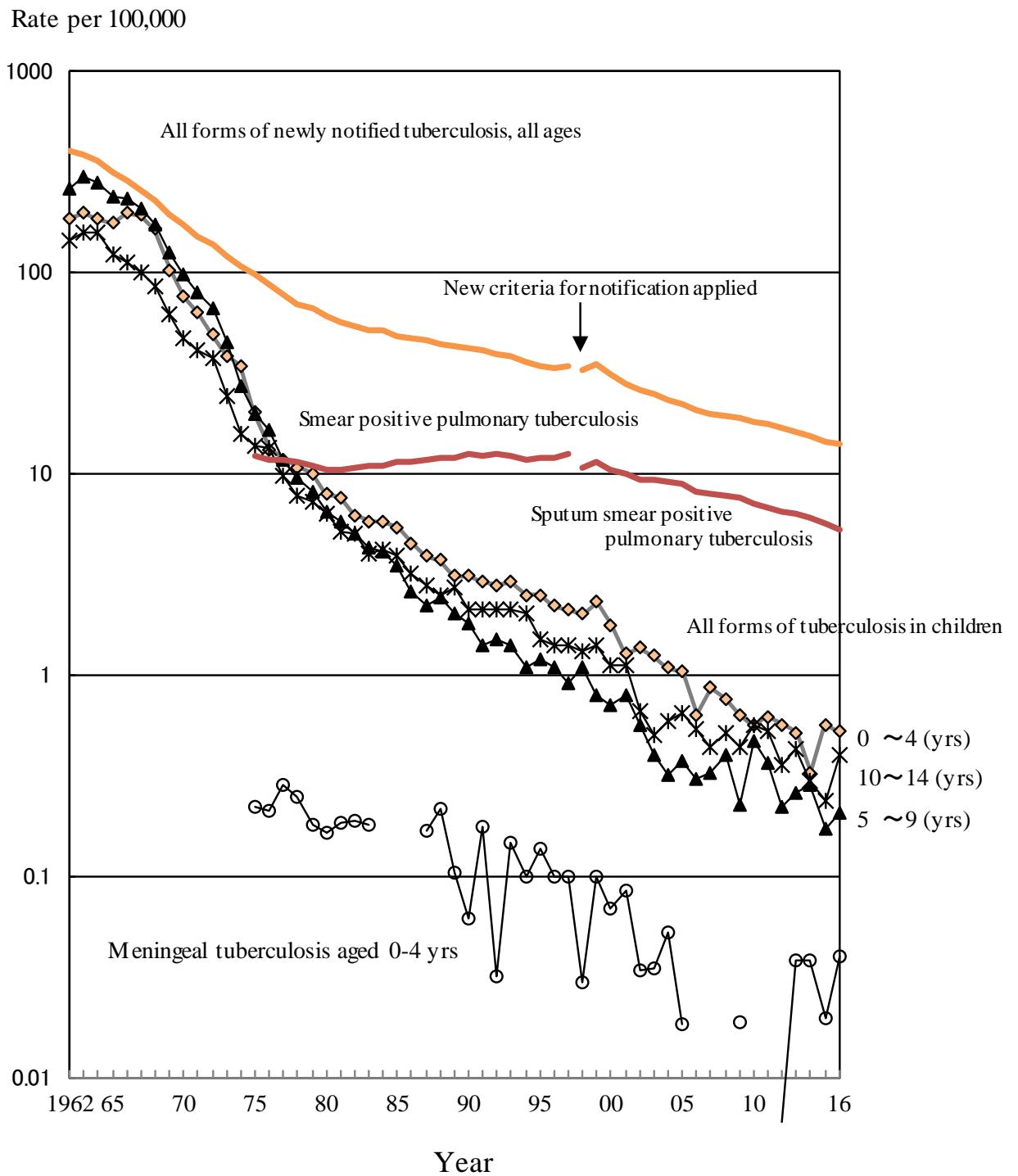


Fig. 1 Trend of childhood tuberculosis notification rates, per 100,000 population, 1962-2016

Table 1 Number and rates of childhood tuberculosis patients and specific extra-pulmonary tuberculosis, 1965-2016

Year	Newly notified tuberculosis aged 0-14 yrs		No. of meningeal tuberculosis		No. of miliary tuberculosis	
	Number	Rate	0-14 yrs	0-4 yrs (Rate)	0-14 yrs	0-4 yrs (Rate)
1965	44,180	175.6	—	—	—	—
1970	18,197	73.4	—	—	—	—
1975	4,905	18.0	28	22 (0.221)	—	—
1980	1,893	6.9	22	14 (0.164)	—	—
1985	1,088	4.2	—	—	—	—
1990	518	2.3	9	4 (0.061)	10	8 (0.122)
1995	340	1.7	8	8 (0.136)	8	8 (0.136)
2000	220	1.2	7	4 (0.069)	3	3 (0.052)
2005	117	0.67	3	1 (0.018)	3	1(0.018)
2010	89	0.53	0	0	0	0
2011	84	0.50	1	0	2	1(0.019)
2012	63	0.38	1	1(0.019)	0	0
2013	66	0.40	2	2(0.038)	0	0
2014	49	0.30	5	2(0.038)	2	1(0.019)
2015	51	0.32	1	1(0.020)	1	0
2016	59	0.4	2	2(0.040)	1	1(0.020)

Extra-pulmonary tuberculosis: Cases are counted independently.

Rate: per 100,000

—: Not available

Table 2 Number of newly notified childhood tuberculosis patients by age and mode of detection, 2016

	Age (yrs)																Total
	0	1	2	3	4	5	6	7	8	9	10	11	12	13	14		
School mass-investigation	0	0	0	0	0	0	0	0	1	0	0	0	0	0	1	2	
Family contact investigation	0	2	0	1	3	1	1	0	1	0	2	1	0	2	2	16	
Other contact investigation	0	1	0	0	1	0	0	0	0	0	0	0	0	1	4	7	
At clinics/hospitals (with symptoms)	7	5	1	1	1	0	1	0	2	4	1	1	0	3	3	30	
Others	3	0	0	0	0	0	0	0	0	0	0	1	0	0	0	4	
Total	10	8	1	2	5	1	2	0	4	4	3	3	0	6	10	59	

Table 3 Proportion of BCG vaccinated cases among newly notified childhood tuberculosis patients and LTBI cases, 2016

	Age in years										5-9	10-14	Total	
	Age in months					0	1	2	3	4				Total
	0-2	3-5	6-8	9-11	Total									
Tuberculosis cases	0	4	3	3	10	8	1	2	5	26	11	22	59	
BCG vaccinated	0	3	3	1	7	5	0	1	3	16	7	7	30	
BCG not vaccinated	0	0	0	0	0	0	1	0	0	1	0	0	1	
BCG unknown	0	1	0	2	3	3	0	1	2	9	4	15	28	
BCG vaccinated (%) [*]	-	100.0	100.0	100.0	100.0	100.0	0.0	100.0	100.0	94.1	100.0	100.0	96.8	
LTBI	23	65	154	26	268	51	41	29	30	419	96	83	598	
BCG vaccinated	0	26	87	14	127	37	27	20	16	227	59	38	324	
BCG not vaccinated	21	22	6	2	51	2	0	0	0	53	0	1	54	
BCG unknown	2	17	61	10	90	12	14	9	14	139	37	44	220	
BCG vaccinated (%) [*]	0.0	54.2	93.5	87.5	71.3	94.9	100.0	100.0	100.0	81.1	100.0	97.4	85.7	

LTBI : Latent Tuberculosis Infection

*% : Proportion of BCG vaccinated cases among all TB/LTBI cases excluding BCG unknown

Previous table Trend of newly notified childhood TB patients by age and calendar year, 1998-2016

Year	Age (yrs)															Total
	0	1	2	3	4	5	6	7	8	9	10	11	12	13	14	
1998	31	39	15	18	16	12	18	14	13	10	7	7	29	18	27	274
1999	43	35	24	23	9	10	15	8	7	10	8	9	27	27	25	280
2000	29	27	19	14	14	8	10	13	5	7	14	11	21	12	16	220
2001	27	18	14	9	7	4	14	11	11	8	8	4	23	18	19	195
2002	30	21	14	12	3	9	8	5	6	6	2	3	14	15	7	155
2003	23	15	17	5	12	9	5	4	1	5	4	3	4	10	10	127
2004	20	18	9	5	10	5	2	3	5	4	3	4	12	6	11	117
2005	23	11	5	13	4	4	3	7	5	3	6	5	7	13	8	117
2006	9	6	8	6	6	6	3	3	2	4	3	4	3	13	9	85
2007	21	5	7	12	2	6	5	2	4	2	2	4	4	7	9	92
2008	11	14	11	4	1	2	6	2	5	8	2	5	7	8	9	95
2009	15	8	6	3	2	4	4	1	3	1	6	1	5	8	6	73
2010	10	6	5	5	4	6	6	8	3	3	5	4	4	7	13	89
2011	5	7	6	7	8	3	7	3	3	4	6	4	5	5	11	84
2012	8	6	6	7	3	2	2	3	1	4	3	2	3	7	6	63
2013	7	4	5	4	7	3	3	2	1	5	3	4	7	3	8	66
2014	5	8	-	2	2	1	6	1	3	4	-	3	3	7	4	49
2015	13	5	5	2	4	1	-	-	6	2	-	4	4	3	2	51
2016	10	8	1	2	5	1	2	-	4	4	3	3	-	6	10	59

School mass-examination was revised in 2003.

Upper-limitation age of BCG vaccination was changed from 4 years to 6 months, with introduction of direct vaccination policy in 2005.

Previous table Number of prefectures by number of childhood TB patients, 1980-2016

Year	Number of childhood TB patients							Total
	0	1	2~4	5~9	10~14	15~19	20+(cases)	
1980	0	0	1	6	7	4	29	47
1985	0	0	5	11	10	2	19	47
1990	0	3	13	11	8	2	10	47
1995	3	6	14	13	4	2	5	47
2000	9	8	13	10	3	1	3	47
2005	17	8	13	7	2	0	0	47
2006	19	13	8	6	1	0	0	47
2007	17	12	11	5	2	0	0	47
2008	14	12	16	4	1	0	0	47
2009	27	6	8	4	2	0	0	47
2010	15	14	14	3	0	0	1	47
2011	19	11	12	4	0	0	1	47
2012	22	11	11	3	0	0	0	47
2013	19	14	9	5	0	0	0	47
2014	22	14	9	2	0	0	0	47
2015	25	10	9	3	0	0	0	47
2016	25	10	7	5	0	0	0	47

【Elderly】

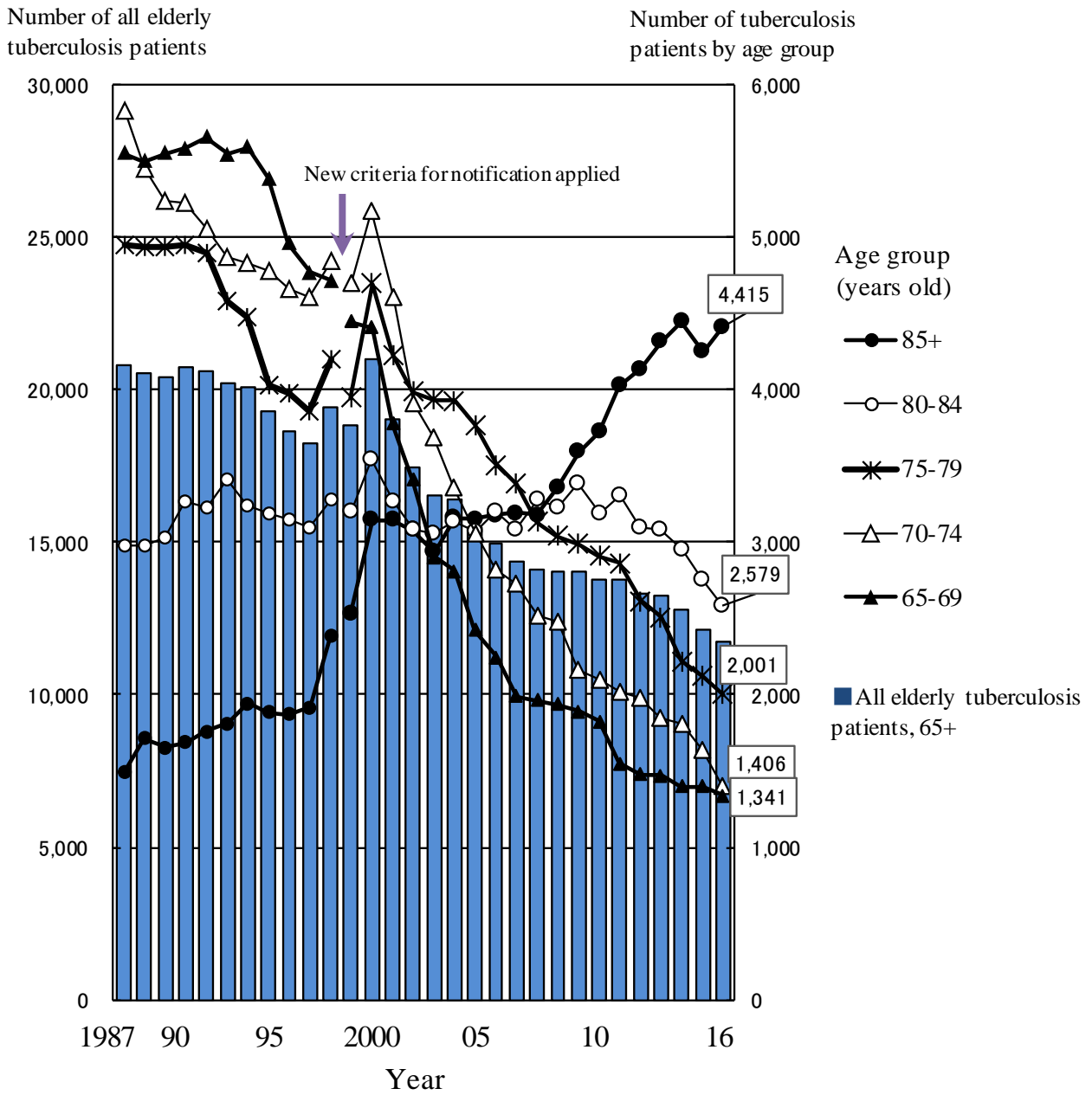


Fig.2 Annual trend of the number of newly notified elderly tuberculosis patients by age group, 1987-2016

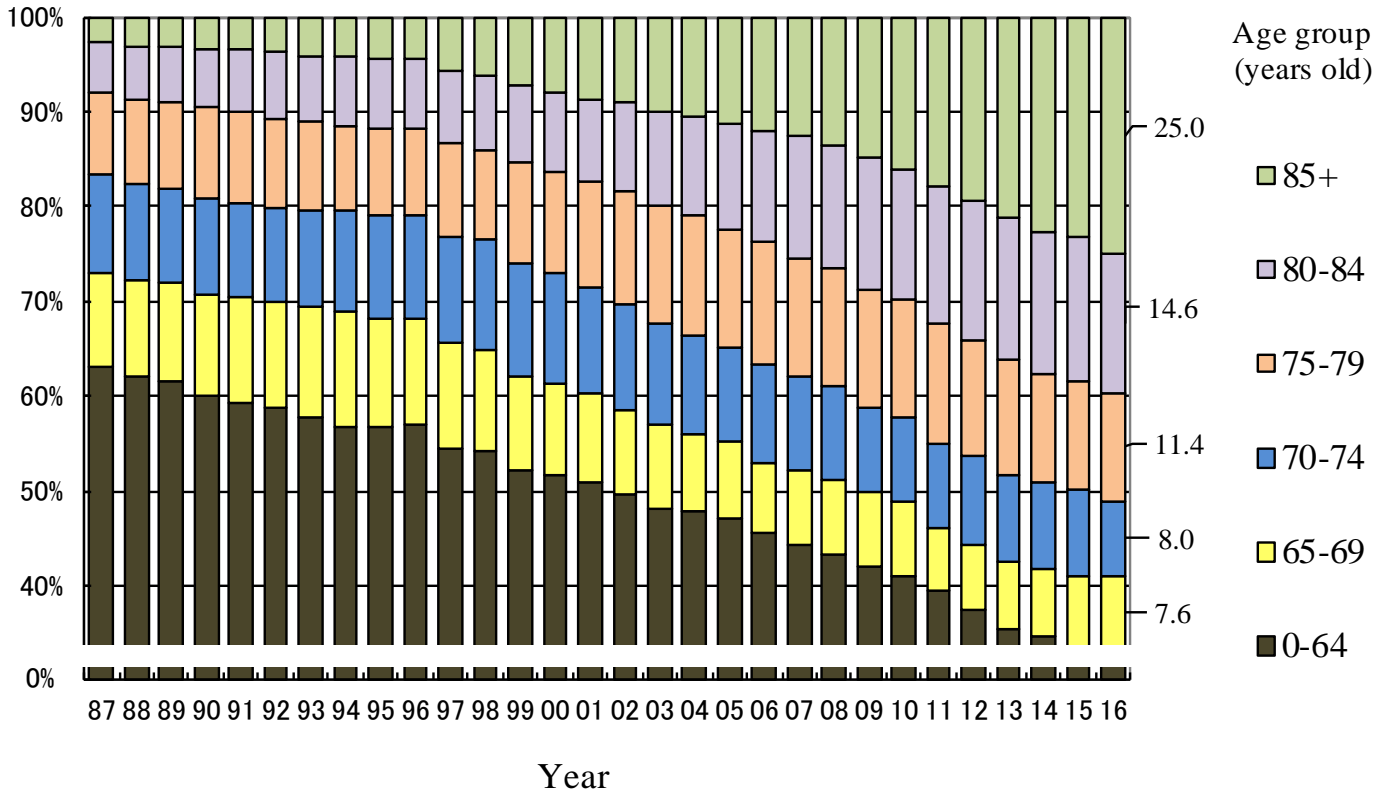


Fig.3 Annual trend of the proportion of elderly tuberculosis patients among all newly notified tuberculosis patients, 1987-2016

Rate per 100,000 population

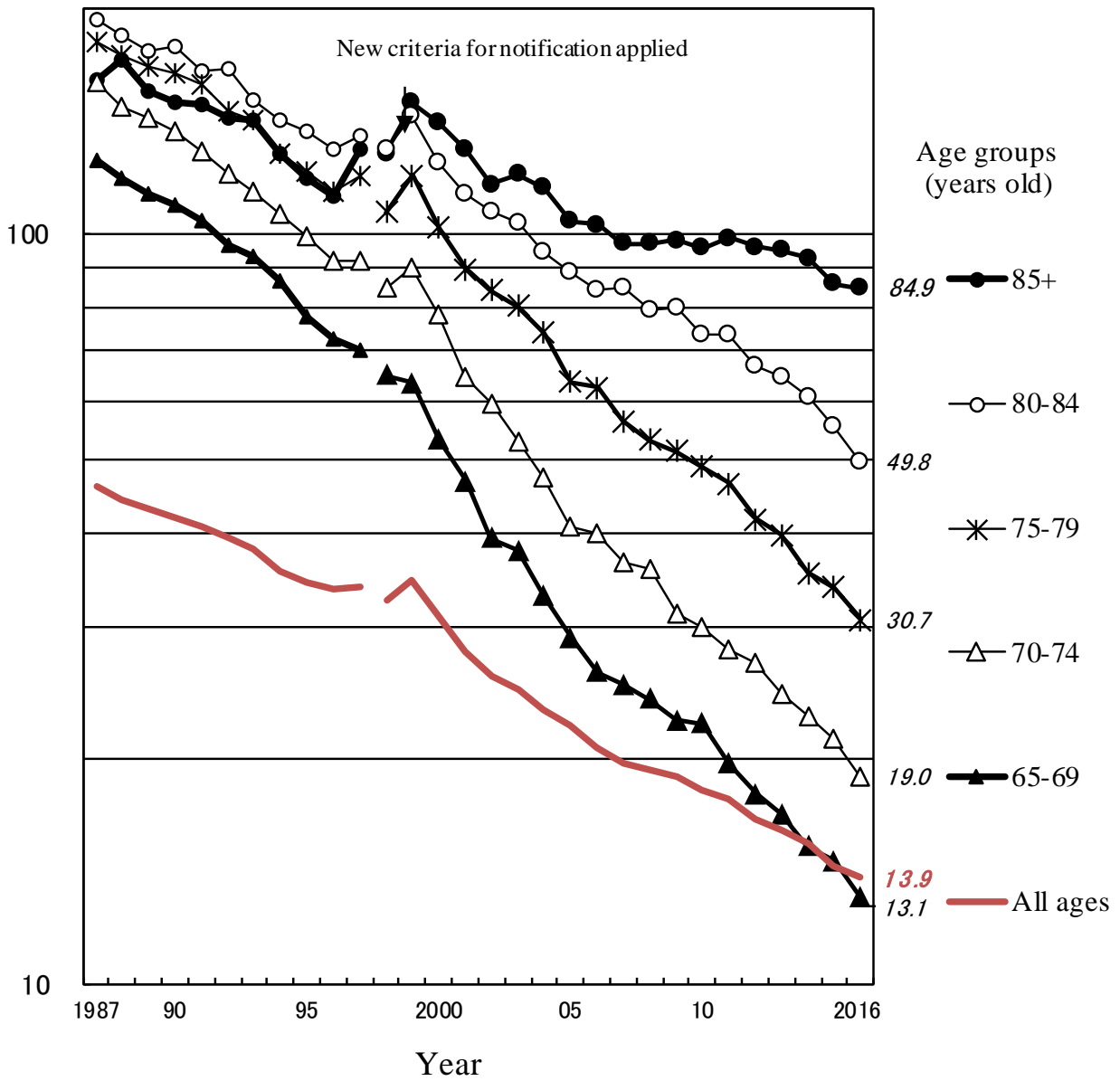


Fig.4 Annual trend of elderly tuberculosis notification rates (per 100,000 population) among the elderly population, by age group, all forms, 1987-2016

Table 4 Comparison of epidemiological indicators of newly notified tuberculosis patients by sex and age group, 2016

		All ages	Age group (years old)				
			Youth and middle-aged	The elderly			
				15-64	all 65+	65-74	75-84
Number of newly notified tuberculosis patients (all forms, n)	Total	17,625	5,824	11,742	2,747	4,580	4,415
	Male	10,594	3,602	6,961	1,918	2,797	2,246
	Female	7,031	2,222	4,781	829	1,783	2,169
Tuberculosis notification rate (all forms, per 100,000 population)	Total	13.9	7.6	33.9	15.5	39.1	84.9
	Male	17.2	9.3	46.4	22.8	55.9	142.7
	Female	10.8	5.9	24.4	9.0	26.6	59.8
Number of newly notified extra-pulmonary tuberculosis patients (n)	Total	4,017	1,038	2,961	735	1,234	992
	Male	2,090	548	1,532	416	663	453
	Female	1,927	490	1,429	319	571	539
Proportion of extra-pulmonary tuberculosis patients among newly notified tuberculosis patients (%)	Total	22.8	17.8	25.2	26.8	26.9	22.5
	Male	19.7	15.2	22.0	21.7	23.7	20.2
	Female	27.4	22.1	29.9	38.5	32.0	24.9
Number of newly notified pulmonary tuberculosis patients (n)	Total	13,608	4,786	8,781	2,012	3,346	3,423
	Male	8,504	3,054	5,429	1,502	2,134	1,793
	Female	5,104	1,732	3,352	510	1,212	1,630
Proportion of pulmonary tuberculosis patients among newly notified tuberculosis patients (%)	Total	77.2	82.2	74.8	73.2	73.1	77.5
	Male	80.3	84.8	78.0	78.3	76.3	79.8
	Female	72.6	77.9	70.1	61.5	68.0	75.1
Proportion of bacteriologically positive tuberculosis patients among all pulmonary tuberculosis patients (%)	Total	85.7	75.8	91.4	85.7	91.3	94.8
	Male	86.1	77.4	91.3	87.5	91.3	94.5
	Female	85.1	73.1	91.5	80.4	91.3	95.2
Proportion of sputum-smear positive pulmonary tuberculosis patients among all pulmonary tuberculosis patients (%)	Total	48.8	37.6	55.1	49.9	54.5	58.7
	Male	50.0	40.6	55.5	52.2	55.4	58.3
	Female	46.8	32.3	54.5	42.9	53.1	59.2
Proportion of cavitory pulmonary tuberculosis patients among all pulmonary tuberculosis patients (%)	Total	29.4	31.4	28.4	34.7	28.0	25.2
	Male	32.7	35.3	31.3	37.9	30.3	27.0
	Female	23.9	24.4	23.8	25.1	24.1	23.1
Proportion of far-advanced cavitory pulmonary tuberculosis patients among all pulmonary tuberculosis patients (%)	Total	1.7	2.4	1.3	2.3	1.3	0.7
	Male	1.9	3.0	1.3	2.3	1.2	0.7
	Female	1.3	1.4	1.3	2.4	1.4	0.8
Proportion of symptomatic pulmonary tuberculosis patients upon diagnosis among all pulmonary tuberculosis (%)	Total	73.9	61.4	81.0	72.4	81.0	86.0
	Male	73.2	61.8	79.7	72.4	80.4	85.1
	Female	75.2	60.6	82.9	72.4	81.9	87.0
Proportion of pulmonary tuberculosis patients with only symptoms other than respiratory symptoms among symptomatic pulmonary tuberculosis patients (%)	Total	24.3	19.2	26.5	22.0	26.4	28.7
	Male	22.7	19.2	24.3	21.3	24.3	26.4
	Female	27.0	19.1	29.9	24.1	30.1	31.2
Proportion of patient delay of two months or more among symptomatic pulmonary tuberculosis patients (%)*	Total	19.7	26.5	16.9	24.0	17.3	13.0
	Male	21.2	28.8	17.9	24.5	17.7	13.5
	Female	17.4	22.6	15.3	22.4	16.7	12.5
Proportion of doctor delay of one month or more among symptomatic pulmonary tuberculosis patients (%)*	Total	22.0	20.8	22.5	24.2	23.4	20.8
	Male	20.8	18.6	21.8	22.7	23.0	19.6
	Female	23.9	24.8	23.6	28.2	24.1	22.0
Proportion of total delay of three months or more among symptomatic pulmonary tuberculosis patients (%)*	Total	19.6	27.0	16.5	22.0	18.0	12.4
	Male	20.1	27.4	16.9	22.0	17.6	12.5
	Female	18.8	26.2	15.9	22.0	18.6	12.3
Proportion of tuberculosis patients detected as out-patient for other diseases among newly notified tuberculosis patients (%)	Total	11.2	6.4	13.6	14.7	15.5	10.9
	Male	11.7	6.2	14.5	14.5	16.2	12.4
	Female	10.5	6.7	12.3	15.3	14.5	9.3
Proportion of tuberculosis patients detected as in-patient for other diseases among newly notified tuberculosis patients (%)	Total	14.0	4.2	19.0	13.5	18.9	22.4
	Male	13.6	4.6	18.3	14.5	17.9	21.9
	Female	14.7	3.5	20.0	11.3	20.4	23.0

Subjects: * Excluding the patients of unknown delays

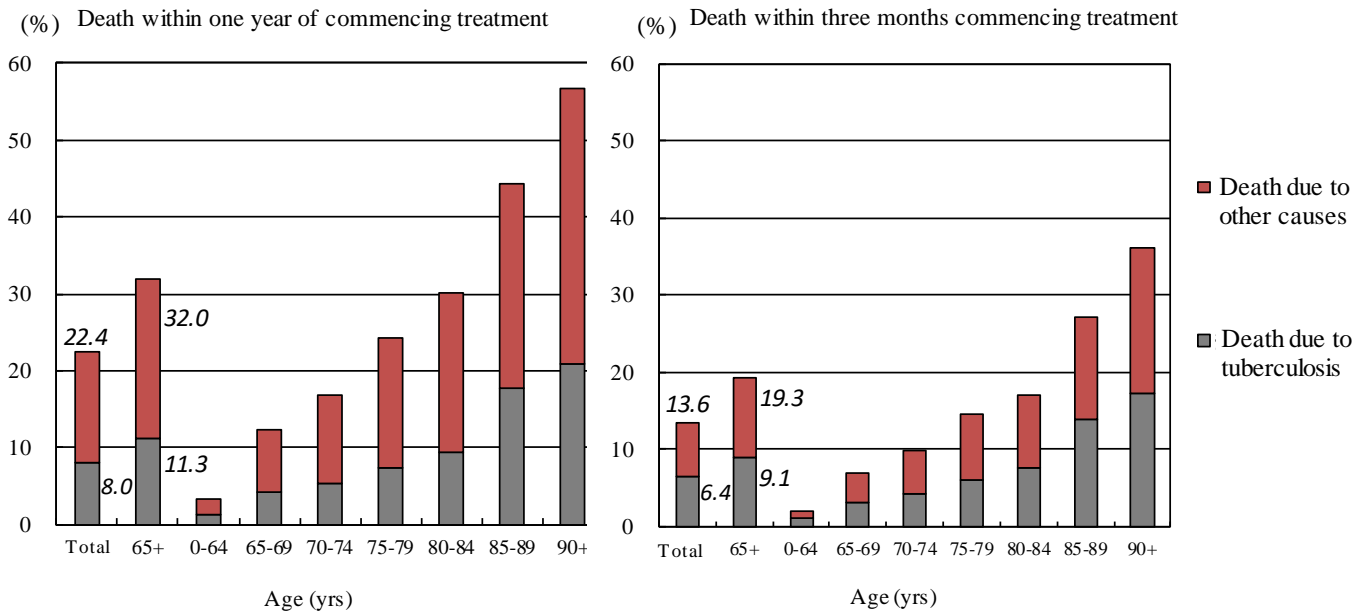


Fig.5 Proportion of death among newly notified tuberculosis patients in 2015 by age group, cause of death and duration till death
 * The date when tuberculosis diagnosis was made was used as the date treatment was commenced for those who died before the start of treatment.

Previous table Number and proportion of elderly TB by prefecture and city, 2016

65+ (yrs)			85+ (yrs)		
Area	<i>n</i>	%	Area	<i>n</i>	%
Japan	11,742	66.6	Japan	4,415	25.0
Akita	73	84.9	Saga	47	44.3
Kouchi	78	84.8	Kouchi	40	43.5
Nagasaki	181	83.0	Kagawa	59	42.8
Toyama	96	82.1	Shizuoka city	39	40.2
Fukui	71	81.6	Tokushima	48	40.0
Kumamoto city	69	81.2	Fukui	34	39.1
Kagawa	112	81.2	Miyagi	38	38.8
Miyazaki	116	81.1	Oita	70	37.8
Oita	150	81.1	Miyazaki	54	37.8
Hokkaido	288	80.4	Shimane	32	36.8
Tokushima	96	80.0	Wakayama	48	36.6
Okayama	104	79.4	Nagasaki	78	35.8
Ymaguchi	140	78.7	Aomori	61	35.7
Miyagi	77	78.6	Kumamoto	52	35.4
Saga	83	78.3	Kagoshima	85	34.7
.
Chiba city	94	59.5	Okayama city	15	19.5
Gunma	108	59.0	Yokohama city	102	19.0
Saitama	455	57.1	Tokyo	414	17.7
Saitama city	102	56.0	Kawasaki city	43	17.3
Yokohama city	300	55.8	Chiba	125	16.7
Kawasaki city	136	54.6	Saitama	128	16.1
Sagamihara city	31	54.4	Sakai	26	16.0
Chiba	386	51.6	Osaka city	139	15.7
Tokyo	1,199	51.2	Tokyo 23wards	277	15.6
Tokyo 23wards	857	48.3	Chiba city	20	12.7

Descending order by proportion of elderly TB patients