

【Case finding】

Table1 Proportion of mode of detection among newly notified tuberculosis patients, 2007-2016

Year	Newly notified TB patients		Mass screening								Contact examination				Medical institutions						Others		Unknown		
	n	%	Schools		Residents		Employees		Facilities		Family		Others		Outpatients with TB symptoms(*1)		Inpatients with other diseases		Outpatients with other diseases		n	%	n	%	
			n	%	n	%	n	%	n	%	n	%	n	%	n	%	n	%							
2007	25,311	537	2.1	217	0.9	636	2.5	1,931	7.6	145	0.6	355	1.4	370	1.5	16,997	67.2	2,031	8.0	1,611	6.4	340	1.3	141	0.6
2008	24,760	639	2.6	195	0.8	486	2.0	1,877	7.6	144	0.6	325	1.3	410	1.7	15,347	62.0	2,681	10.8	2,100	8.5	316	1.3	240	1.0
2009	24,170	611	2.5	197	0.8	550	2.3	1,749	7.2	136	0.6	324	1.3	311	1.3	14,864	61.5	2,752	11.4	2,220	9.2	301	1.2	155	0.6
2010	23,261	507	2.2	244	1.0	544	2.3	1,618	7.0	128	0.6	313	1.3	350	1.5	13,901	59.8	2,792	12.0	2,305	9.9	333	1.4	226	1.0
2011	22,681	470	2.1	188	0.8	497	2.2	1,531	6.8	126	0.6	354	1.6	482	2.1	13,177	58.1	2,916	12.9	2,515	11.1	330	1.5	95	0.4
2012	21,283	409	1.9	163	0.8	498	2.3	1,424	6.7	121	0.6	315	1.5	374	1.8	12,284	57.7	2,941	13.8	2,312	10.9	357	1.7	85	0.4
2013	20,495	413	2.0	172	0.8	455	2.2	1,246	6.1	89	0.4	314	1.5	333	1.6	11,978	58.4	2,745	13.4	2,306	11.3	336	1.6	108	0.5
2014	19,615	344	1.8	201	1.0	404	2.1	1,221	6.2	92	0.5	303	1.5	333	1.7	11,441	58.3	2,591	13.2	2,210	11.3	328	1.7	147	0.7
2015	18,280	319	1.7	192	1.1	359	2.0	1,147	6.3	78	0.4	248	1.4	263	1.4	10,556	57.7	2,630	14.4	2,043	11.2	144	0.8	127	0.7
2016	17,625	319	1.8	250	1.4	355	2.0	1,056	6.0	98	0.6	211	1.2	409	2.3	10,073	57.2	2,471	14.0	1,971	11.2	146	0.8	98	0.6
2016																									
Age group																									
0~9	37	0	0.0	1	2.7	0	0.0	0	0.0	0	0.0	9	24.3	2	5.4	20	54.1	0	0.0	2	5.4	3	8.1	0	0.0
10~19	212	2	0.9	67	31.6	1	0.5	6	2.8	0	0.0	20	9.4	29	13.7	72	34.0	0	0.0	3	1.4	1	0.5	2	0.9
20~29	1,235	28	2.3	164	13.3	2	0.2	226	18.3	2	0.2	27	2.2	104	8.4	588	47.6	13	1.1	19	1.5	6	0.5	7	0.6
30~39	1,004	23	2.3	14	1.4	7	0.7	228	22.7	3	0.3	21	2.1	48	4.8	564	56.2	33	3.3	39	3.9	5	0.5	4	0.4
40~49	1,228	36	2.9	4	0.3	22	1.8	239	19.5	8	0.7	35	2.9	64	5.2	660	53.7	50	4.1	78	6.4	16	1.3	8	0.7
50~59	1,295	35	2.7	0	0.0	15	1.2	202	15.6	7	0.5	19	1.5	41	3.2	745	57.5	71	5.5	128	9.9	7	0.5	11	0.8
60~69	2,213	54	2.4	0	0.0	76	3.4	136	6.1	14	0.6	37	1.7	51	2.3	1,266	57.2	229	10.3	273	12.3	39	1.8	21	0.9
70~79	3,407	59	1.7	0	0.0	127	3.7	16	0.5	10	0.3	21	0.6	36	1.1	1,947	57.1	551	16.2	562	16.5	30	0.9	17	0.5
80~89	5,138	66	1.3	0	0.0	93	1.8	3	0.1	30	0.6	19	0.4	25	0.5	3,058	59.5	1,068	20.8	704	13.7	29	0.6	23	0.4
90~	1,856	16	0.9	0	0.0	12	0.6	0	0.0	24	1.3	3	0.2	9	0.5	1,153	62.1	456	24.6	163	8.8	10	0.5	5	0.3

TB: tuberculosis

TB symptoms: Respiratory symptoms such as cough, sputum expectoration, bloody sputum, and hemoptysis; and other symptoms such as wheezing, chest pain, back pain, dyspnea, fever, night sweating, fatigue tendency, and weight loss.

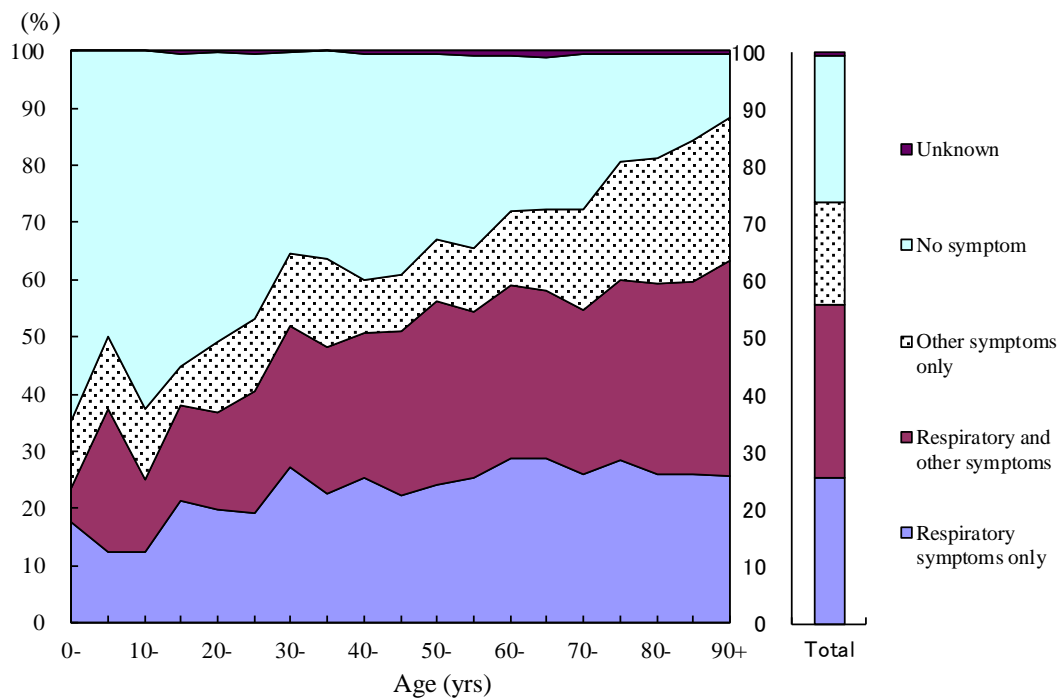


Fig.1 Proportion of symptoms among newly notified pulmonary tuberculosis patients by 5- years age group, in 2016

Respiratory symptoms include cough, sputum expectoration, bloody sputum, and hemoptysis. Other symptoms include wheezing, chest pain, back pain, dyspnea, fever, night sweating, fatigue tendency, and weight loss.

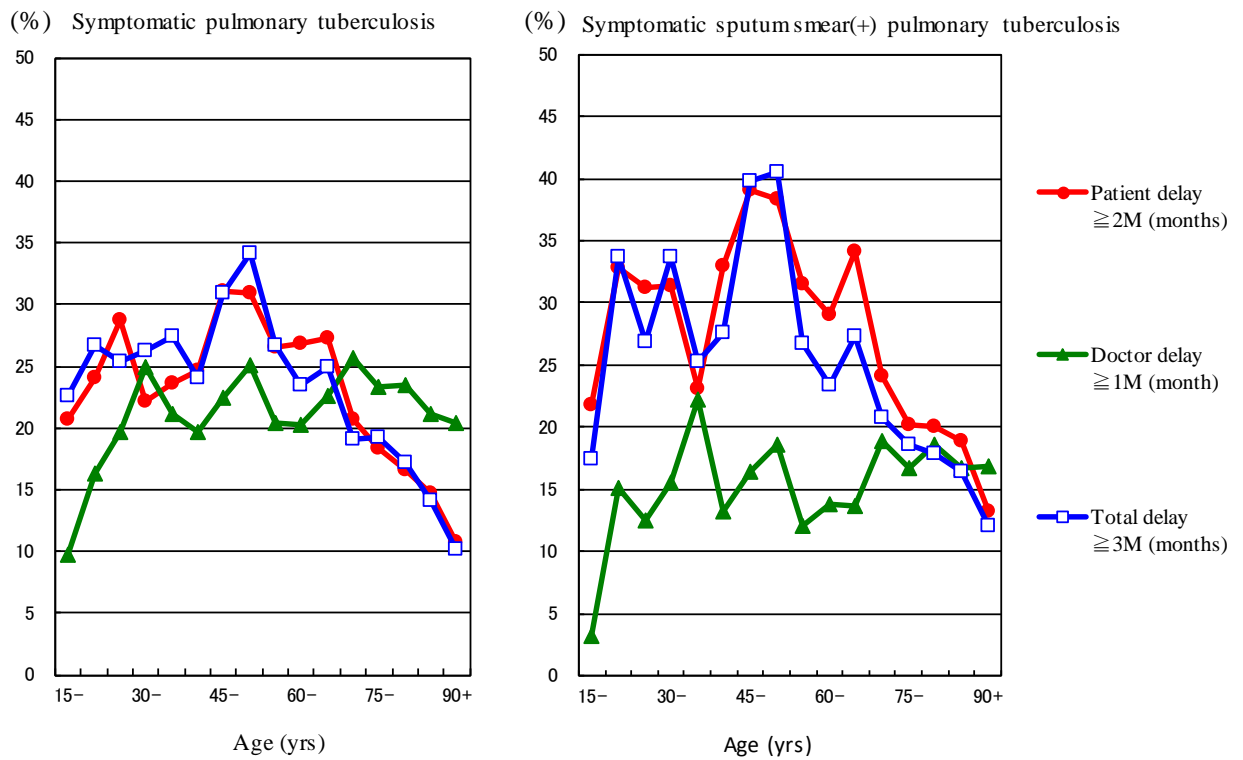


Fig.2 Proportion of patient delay, doctor delay and total delay among symptomatic pulmonary tuberculosis patients by 5-year age group, in 2016

Patient delay: time interval from the onset of symptoms to the first visit to a medical institution of 2 months or longer

Doctor delay: time interval from the first visit to a medical institution to the diagnosis of tuberculosis of 1 month or longer

Total delay: time interval from the onset of symptoms to the diagnosis of tuberculosis is 3 months or longer

Previous table Proportion of mode of detection among newly notified TB patients by age group, 2016

Age groups	Newly notified TB patients	Individual medical checkup	Mass screening				Contact examination			Medical institutions			Others	Unknown
			Schools	Residents	Employees	Facilities	Family	Others	Outpatients with TB symptoms (*1)	Inpatients with other diseases	Outpatients with other diseases			
	<i>n</i>	%	%	%	%	%	%	%	%	%	%	%	%	
All forms of TB														
Total	17,625	1.8	1.4	2.0	6.0	0.6	1.2	2.3	57.2	14.0	11.2	0.8	0.6	
0-14	59	0.0	3.4	0.0	0.0	0.0	27.1	11.9	47.5	0.0	3.4	6.8	0.0	
15-19	190	1.1	34.7	0.5	3.2	0.0	6.8	12.6	33.7	0.0	1.6	0.0	1.1	
20-24	630	3.0	18.3	0.3	16.5	0.0	1.9	9.5	42.9	1.0	0.6	0.6	0.5	
25-29	605	1.5	8.1	0.0	20.2	0.3	2.5	7.3	52.6	1.2	2.5	0.3	0.7	
30-34	516	1.7	1.7	0.4	23.8	0.2	2.3	3.3	58.3	2.3	2.9	0.2	0.4	
35-39	488	2.9	1.0	1.0	21.5	0.4	1.8	6.4	53.9	4.3	4.9	0.8	0.4	
40-44	572	3.8	0.7	3.3	19.6	0.5	2.6	4.2	54.2	3.5	5.1	1.2	0.5	
45-49	656	2.1	0.0	0.5	19.4	0.8	3.0	6.1	53.4	4.6	7.5	1.4	0.8	
50-54	602	3.3	0.0	1.0	18.6	0.7	1.2	2.3	56.8	5.1	9.5	0.2	0.7	
55-59	693	2.2	0.0	1.3	13.0	0.4	1.7	3.9	58.2	5.8	10.2	0.9	1.0	
60-64	872	2.3	0.0	2.2	9.2	0.5	1.9	2.9	57.1	8.7	12.0	1.5	0.8	
65-69	1,341	2.5	0.0	4.3	4.2	0.7	1.5	1.9	57.3	11.4	12.5	1.9	1.0	
70-74	1,406	2.0	0.0	4.4	0.9	0.4	0.8	1.6	54.6	15.6	16.9	1.1	0.4	
75-79	2,001	1.5	0.0	3.2	0.2	0.2	0.5	0.6	59.0	16.6	16.2	0.7	0.5	
80-84	2,579	1.5	0.0	2.1	0.1	0.4	0.4	0.6	57.9	20.7	15.0	0.6	0.3	
85-89	2,559	1.1	0.0	1.5	0.0	0.8	0.3	0.4	61.2	20.9	12.4	0.5	0.5	
90+	1,856	0.9	0.0	0.6	0.0	1.3	0.2	0.5	62.1	24.6	8.8	0.5	0.3	
(Re-count) Sputum smear positive pulmonary TB														
Total	6,642	1.4	0.5	1.8	3.6	0.6	0.4	0.7	63.8	15.3	10.3	0.5	0.6	
0-14	3	0.0	33.3	0.0	0.0	0.0	33.3	0.0	33.3	0.0	0.0	0.0	0.0	
15-19	47	0.0	29.8	0.0	6.4	0.0	2.1	6.4	55.3	0.0	0.0	0.0	0.0	
20-24	134	2.2	9.7	0.0	16.4	0.0	2.2	5.2	59.7	0.0	0.0	0.7	0.0	
25-29	148	0.7	4.7	0.0	11.5	0.0	0.7	0.7	72.3	1.4	3.4	0.7	2.0	
30-34	142	1.4	0.0	0.0	19.7	0.7	0.7	0.7	69.0	3.5	1.4	0.7	0.0	
35-39	140	2.1	0.0	0.7	13.6	0.0	0.0	0.7	72.9	4.3	5.0	0.0	0.7	
40-44	177	2.8	0.6	1.1	16.4	1.1	0.6	1.7	67.2	3.4	4.0	0.6	0.6	
45-49	209	2.9	0.0	0.5	12.9	1.4	1.4	1.9	66.5	4.3	6.7	0.0	0.5	
50-54	213	1.4	0.0	0.9	11.7	0.5	0.5	0.9	72.3	4.2	6.6	0.5	0.5	
55-59	240	1.3	0.0	0.8	7.9	0.4	0.8	2.5	70.4	4.2	8.8	0.0	1.3	
60-64	350	1.1	0.0	1.7	7.1	0.3	1.1	1.1	66.3	8.9	10.3	0.6	1.1	
65-69	502	1.6	0.0	4.2	3.8	0.6	0.6	1.2	63.5	11.8	9.4	1.6	1.0	
70-74	501	1.0	0.0	3.0	1.0	0.8	0.2	0.0	63.3	14.6	14.2	0.2	0.6	
75-79	751	0.9	0.0	3.3	0.1	0.3	0.1	0.4	61.1	18.4	14.0	0.8	0.3	
80-84	1,074	1.2	0.0	2.0	0.0	0.5	0.2	0.4	59.6	21.3	14.0	0.3	0.4	
85-89	1,141	1.6	0.0	1.1	0.0	0.4	0.2	0.2	64.3	20.2	10.9	0.4	0.5	
90+	870	1.0	0.0	1.0	0.0	1.5	0.1	0.2	62.2	24.1	9.0	0.2	0.3	

TB: tuberculosis

TB symptoms: Respiratory symptoms such as cough, sputum expectoration, bloody sputum, and hemoptysis; and other symptoms such as wheezing, chest pain, back pain, dyspnea, fever, night sweating, fatigue tendency, and weight loss.

Previous table Number of newly notified TB patients by occupation, sex and age group, 2016

Sex/Age group	Total	Service workers	Nurses/Public health nurses	Medical doctors	Other medical workers	Teachers/Nursery nurses	Pupils/Students	Other regular workers	Other temporary/daily workers	Other self-employed	Housekeepers	Infants/Little children	Jobless/ Others	Unknown
Male	10,594	233	16	35	66	23	382	1,851	424	524	8	15	6,731	286
0-14	31	-	-	-	-	-	15	-	-	-	-	15	1	-
15-19	108	1	-	-	-	-	86	10	7	-	-	-	4	-
20-24	384	14	2	-	3	-	186	113	22	5	-	-	35	4
25-29	322	24	1	3	6	3	73	153	26	6	-	-	24	3
30-39	544	44	5	1	22	7	16	306	32	32	-	-	63	16
40-49	738	42	5	6	9	4	3	405	59	47	-	-	136	22
50-59	886	42	3	4	10	6	0	423	66	68	-	-	225	39
60-69	1,580	39	-	8	12	2	2	343	146	149	2	-	799	78
70-79	2,238	24	-	4	4	-	1	80	58	133	2	-	1,862	70
80+	3,763	3	-	9	-	1	-	18	8	84	4	-	3,582	54
Female	7,031	176	175	5	165	39	255	547	210	99	284	11	4,914	151
0-14	28	-	-	-	-	-	16	-	-	-	-	11	1	-
15-19	82	2	-	-	1	-	65	7	1	-	-	-	5	1
20-24	246	15	10	-	8	-	113	64	10	-	4	-	17	5
25-29	283	23	11	-	19	6	45	95	18	5	6	-	48	7
30-39	460	40	48	2	30	9	14	132	40	4	49	-	82	10
40-49	490	33	42	2	54	11	2	103	51	15	45	-	106	26
50-59	409	26	41	1	34	11	-	77	45	13	34	-	116	11
60-69	633	18	18	-	16	1	-	55	38	14	59	-	385	29
70-79	1,169	12	4	-	3	1	-	13	7	26	60	-	1,018	25
80+	3,231	7	1	-	-	-	-	1	-	22	27	-	3,136	37

Previous table Proportion of mode of detection among newly notified pulmonary TB patients aged 20-59 years by occupation, 2016

	Pulmonary TB patients	Individual medical checkup	Mass screening			Contact examination		Clinics/Hospitals			Others/Unknown
			Residents	Employees	Schools/Facilities	Family	Others	Outpatients with TB symptoms (*2)	Inpatients with other diseases	Outpatients with other diseases	
Total	3,919	3.0	1.1	22.1	5.1	2.5	6.3	49.1	2.8	4.7	3.4
Service workers	264	4.2	1.9	22.0	0.0	2.7	5.7	57.6	1.1	3.4	1.5
Medical workers(*1)	321	2.2	0.0	37.1	0.0	2.2	14.0	40.5	0.9	2.8	0.3
Teachers/ Nursery nurses	45	8.9	0.0	37.8	0.0	0.0	6.7	40.0	2.2	4.4	0.0
Students	406	3.2	0.0	1.0	43.1	1.7	12.6	28.1	0.2	0.2	9.9
Other regular workers	1,571	2.6	0.8	36.4	0.1	2.0	5.3	45.3	1.6	3.9	2.0
Other temporary/ daily workers	295	3.1	1.7	15.6	1.0	3.7	7.1	55.9	3.1	5.8	3.1
Other self-employed	151	0.7	4.0	6.0	0.0	2.0	1.3	66.2	4.0	12.6	3.3
Housekeepers	103	7.8	1.9	2.9	1.0	4.9	1.9	66.0	2.9	9.7	1.0
Jobless/ Others	648	2.6	1.9	4.0	2.6	4.0	3.2	61.1	8.2	8.0	4.3
Unknown	115	4.3	0.0	9.6	0.9	0.9	2.6	60.0	4.3	5.2	12.2

*1 Medical workers include nurses, public health nurses, medical doctors and dentists, physical therapists, occupational therapists, medical technologists, radiographers, and co-medicals.

*2 TB symptoms: Respiratory symptoms such as cough, sputum expectoration, bloody sputum, and hemoptysis; and other symptoms such as wheezing, chest pain, back pain, dyspnea, fever, night sweating, fatigue tendency, and weight loss.

【Tuberculosis Characteristics upon Diagnosis】

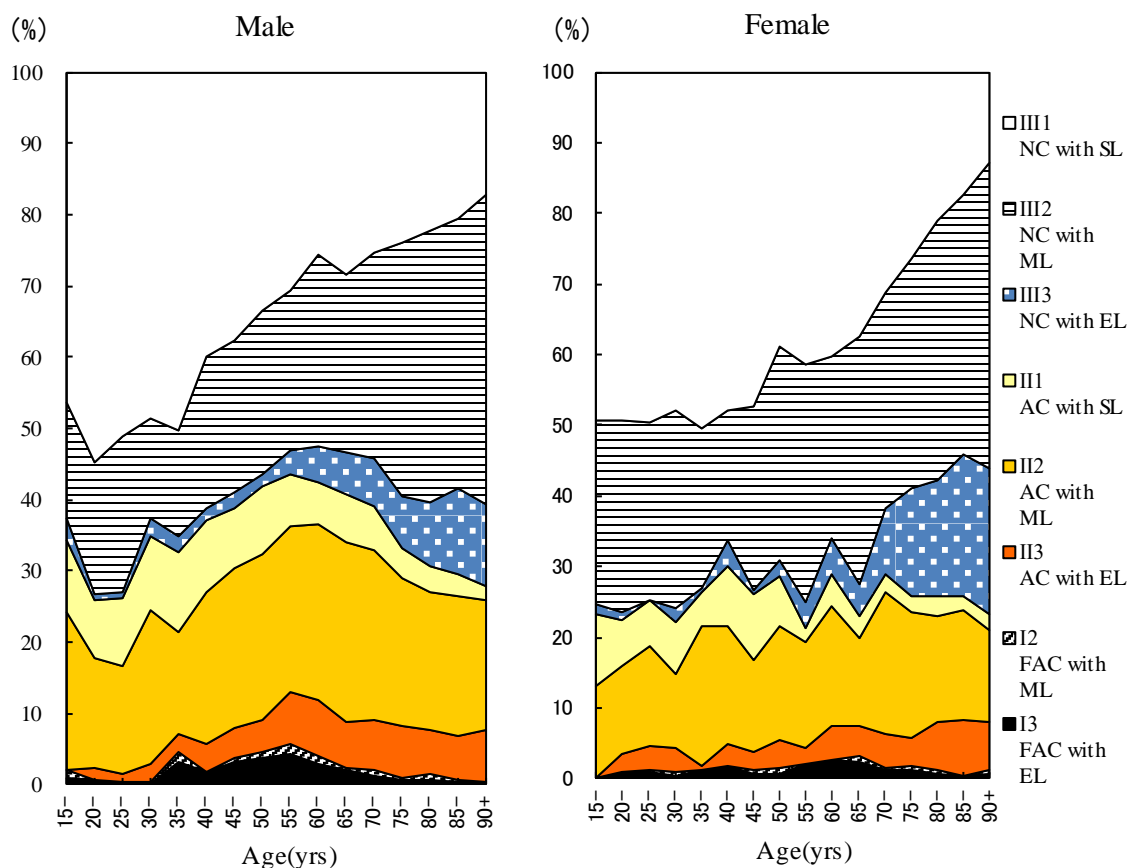


Fig.3 Proportion of cases classified by X-ray classification by sex and 5-yearage group, 2016

NC : Non-cavitory SL : Slight lesion AC : Advanced cavitory ML : Moderate lesion
 FAC: Far-advance cavitory EL : Extensive lesion

Table 2 Number of newly notified tuberculosis patients with HIV infection, by sex and age group, 2015 and 2007–2016

Age group	Sputum smear positive		Other bacteriologically-positive		Bacteriologically-negative		Extra-pulmonary		Total	
	M	F	M	F	M	F	M	F	M	F
2015 Calendar year										
Total	10 (1)	5 (2)	5 (2)	1	1 (1)	2 (2)	20 (4)	0	36 (8)	8 (4)
0-19	0	0	0	0	0	0	0	0	0	0
20-24	0	0	1 (1)	0	0	0	0	0	1 (1)	0
25-29	1 (1)	1 (1)	0	0	0	2 (2)	2 (1)	0	3 (2)	3 (3)
30-34	1	0	1	0	0	0	1	0	3	0
35-39	1	0	1 (1)	0	0	0	7 (1)	0	9 (2)	0
40-44	0	1 (1)	1	0	1 (1)	0	2 (1)	0	4 (2)	1 (1)
45-49	1	0	0	0	0	0	2 (1)	0	3 (1)	0
50-54	0	0	0	0	0	0	3	0	3	0
55-59	1	0	0	0	0	0	0	0	1	0
60-64	2	0	1	0	0	0	0	0	3	0
65-69	0	0	0	0	0	0	2	0	2	0
70-74	2	0	0	1	0	0	1	0	3	1
75-79	0	0	0	0	0	0	0	0	0	0
80+	1	3	0	0	0	0	0	0	1	3
2007-2016 Calendar year										
Total	159 (16)	30 (16)	85 (20)	12 (8)	39 (5)	9 (7)	187 (34)	24 (12)	470 (75)	75 (43)
0-19	1 (1)	0	0	0	0	0	2	0	3 (1)	0
20-24	5 (3)	0	4 (3)	0	1 (1)	1 (1)	1	1	11 (7)	2 (1)
25-29	10 (5)	5 (4)	1 (1)	1 (1)	1 (1)	2 (2)	11 (2)	1 (1)	23 (9)	9 (8)
30-34	13 (3)	4 (4)	11 (1)	3 (2)	2	1 (1)	22 (7)	4 (2)	48 (11)	12 (9)
35-39	23 (2)	3 (3)	18 (5)	3 (3)	6	2 (2)	34 (7)	4 (3)	81 (14)	12 (11)
40-44	26 (1)	5 (4)	16 (5)	0	8 (2)	3 (1)	43 (13)	5 (4)	93 (21)	13 (9)
45-49	16 (1)	1 (1)	9 (3)	1 (1)	4 (1)	0	32 (5)	2	61 (10)	4 (2)
50-54	12	0	11 (2)	0	5	0	11	0	39 (2)	0
55-59	9	0	3	0	4	0	9	2 (2)	25	2 (2)
60-64	15	1	6	1 (1)	3	0	7	0	31	2 (1)
65-69	10	0	3	0	3	0	8	1	24	1
70-74	4	2	1	1	1	0	3	1	9	4
75-79	5	0	0	0	1	0	3	2	9	2
80+	10	9	2	2	0	0	1	1	13	12

Re-count of foreigners

HIV : Human Immunodeficiency Virus. M : male patients, F : female patients.

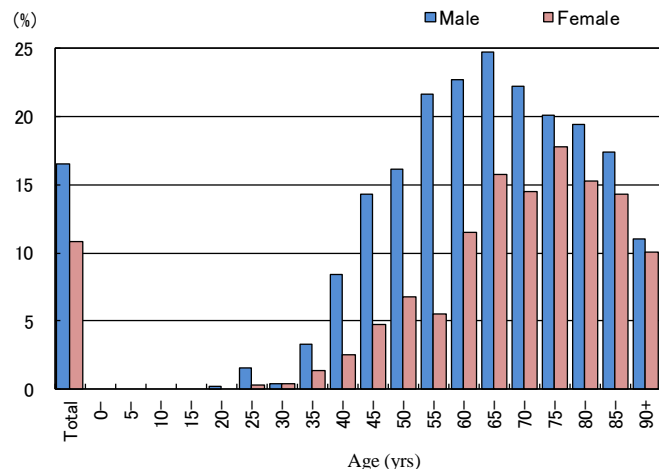


Fig.4 Proportion of newly notified tuberculosis patients with diabetes mellitus in each age-group by sex, 2016

Table 3 Drug susceptibility test results among newly notified pulmonary tuberculosis patients, by treatment history, 2012–2016

Treatment history, Culture examination results, Drug susceptibility test results	2012				2013				2014				2015				2016				
	n	%	%	%	n	%	%	%	n	%	%	%	n	%	%	%	n	%	%	%	
Total																					
Pulmonary tuberculosis	16,432	100%			15,972	100%			15,149	100%			14,123	100%			13,608	100%			
Culture result obtained	14,058	85.6			13,311	83.3			12,909	85.2			12,260	86.8			12,255	90.1			
Culture positive	11,261	68.5	100%		10,523	65.9	100%		10,259	67.7	100%		10,035	71.1	100%		9,878	72.6	100%		
DST result obtained	8,347		74.1	100%	7,701		73.2	100%	7,645		74.5	100%	7,630		76.0	100%	7,732		78.3	100%	
MDR	60			0.7	47			0.6	56			0.7	48			0.6	49			0.6	
Any INH resistance	380			4.6	369			4.8	349			4.6	372			4.9	369			4.8	
Any RFP resistance	73			0.9	64			0.8	76			1.0	77			1.0	74			1.0	
Any resistance*	810			9.7	757			9.8	749			9.8	767			10.1	741			9.6	
New treatment																					
Pulmonary tuberculosis	15,040	100%			14,727	100%			13,956	100%			13,102	100%			12,686	100%			
Culture result obtained	12,882	85.7			12,279	83.4			11,897	85.2			11,394	87.0			11,435	90.1			
Culture positive	10,379	69.0	100%		9,782	66.4	100%		9,523	68.2	100%		9,379	71.6	100%		9,284	73.2	100%		
DST result obtained	7,676			74.0	7,166			73.3	7,104			74.6	7,135			76.1	7,278			78.4	100%
MDR	38			0.5	31			0.4	40			0.6	33			0.5	37			0.5	
Any INH resistance	310			4.0	326			4.5	288			4.1	317			4.4	316			4.3	
Any RFP resistance	46			0.6	42			0.6	58			0.8	58			0.8	56			0.8	
Any resistance*	712			9.3	680			9.5	664			9.3	686			9.6	659			9.1	
Re-treatment																					
Pulmonary tuberculosis	1,094	100%			1,013	100%			968	100%			851	100%			735	100%			
Culture result obtained	959	87.7			852	84.1			848	87.6			732	86.0			665	90.5			
Culture positive	693	63.3	100%		586	57.8	100%		591	61.1	100%		534	62.7	100%		462	62.9	100%		
DST result obtained	555			80.1	435			74.2	449			76.0	412			77.2	358			77.5	100%
MDR	22			4.0	16			3.7	15			3.3	14			3.4	12			3.4	
Any INH resistance	67			12.1	35			8.0	57			12.7	49			11.9	51			14.2	
Any RFP resistance	26			4.7	22			5.1	17			3.8	18			4.4	16			4.5	
Any resistance*	94			16.9	65			14.9	79			17.6	72			17.5	70			19.6	
No information about treatment history																					
Pulmonary tuberculosis	298	100%			232	100%			225	100%			170	100%			187	100%			
Culture result obtained	217	72.8			180	77.6			164	72.9			134	78.8			155	82.9			
Culture positive	189	63.4	100%		155	66.8	100%		145	64.4	100%		122	71.8	100%		132	70.6	100%		
DST result obtained	116			61.4	100			64.5	92			63.4	83			68.0	96			72.7	100%
MDR	0			0.0	0			0.0	1			1.1	1			1.2	0			0.0	
Any INH resistance	3			2.6	8			8.0	4			4.3	6			7.2	2			2.1	
Any RFP resistance	1			0.9	0			0.0	1			1.1	1			1.2	2			2.1	
Any resistance*	4			3.4	12			12.0	6			6.5	9			10.8	12			12.5	

DST: Drug susceptibility test MDR: Multi-drug resistant, i.e., resistant to at least INH and RFP INH: isoniazid RFP: rifampicin

Cases having drug resistance are counted independently by drug.

*: resistant to either INH, RFP, SM, or EB

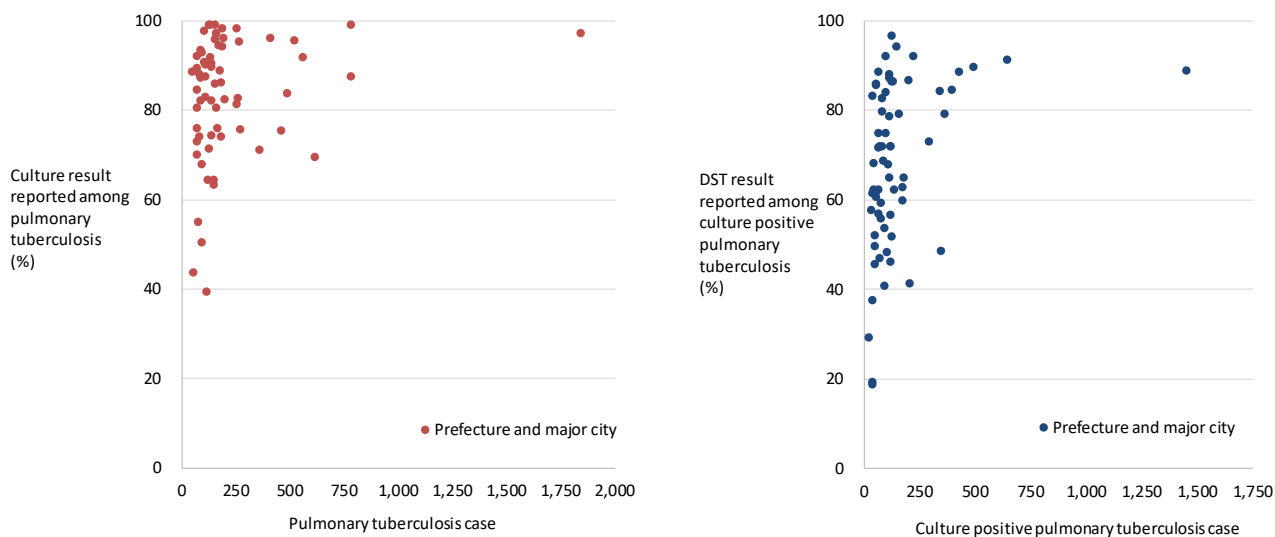
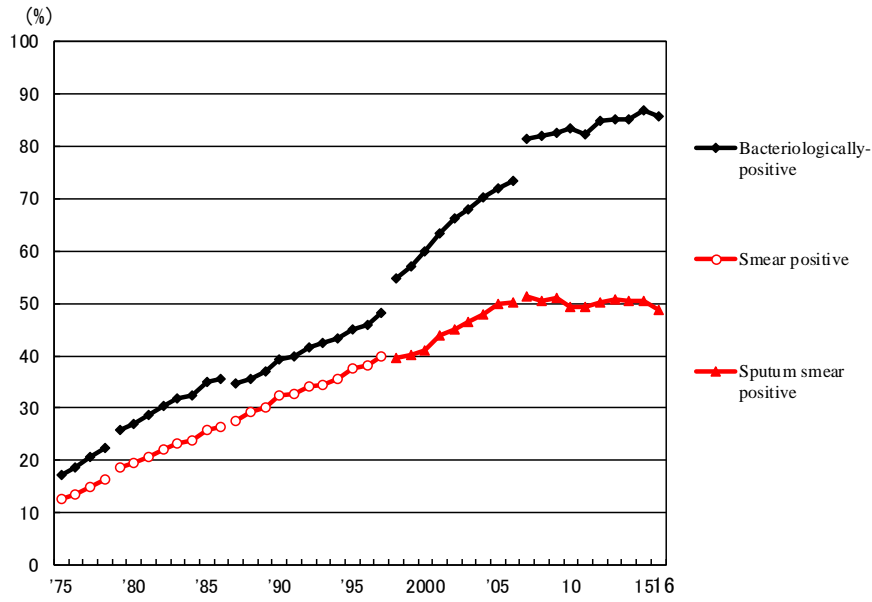
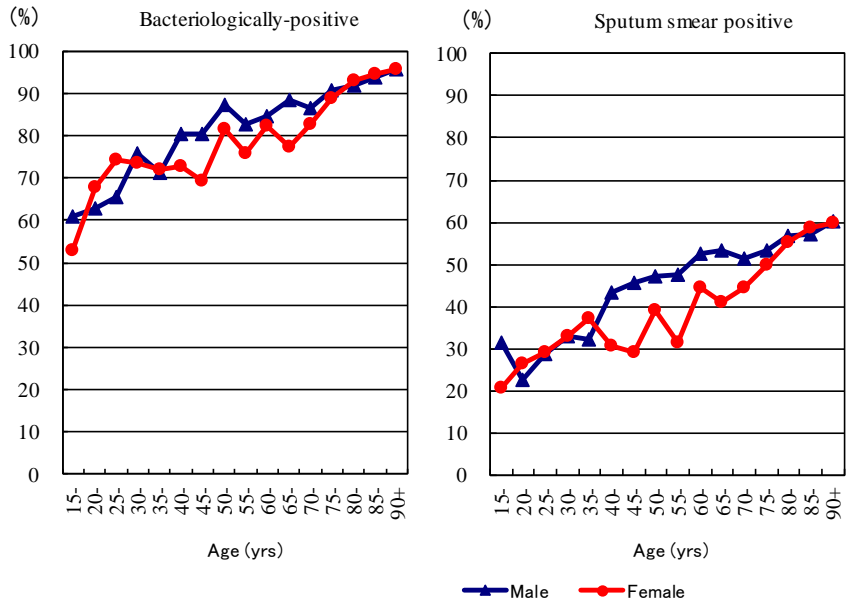


Fig. 5 Scatter plot of culture results reported among pulmonary tuberculosis patients and anti-tuberculosis drug susceptibility test results among newly notified pulmonary tuberculosis patients, by prefecture and major city, 2016

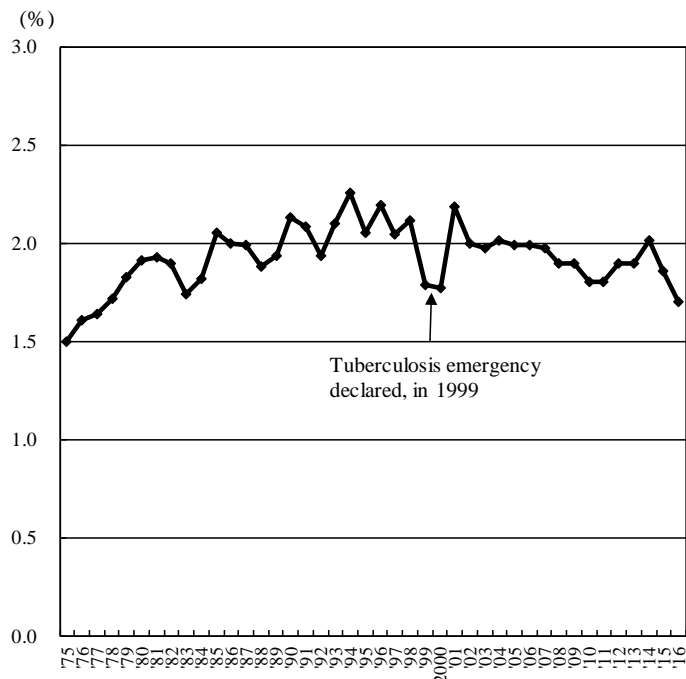


Previous Fig.
 Proportion of bacteriologically confirmed cases among newly notified pulmonary tuberculosis patients, 1975-2016

Sources of information and subjects:
 Annual tuberculosis reports from public health centers
 1975-1978: All forms of tuberculosis
 1979-1986: Pulmonary tuberculosis
 Nationwide computerized tuberculosis surveillance system
 1987-1997: Pulmonary Tuberculosis
 1998-2006: Pulmonary tuberculosis (New patient criteria for notification were applied)
 2007-2009: Pulmonary tuberculosis (Item of nucleic acid amplification was added)



Previous Fig.
 Proportion of bacteriologically confirmed cases among newly notified pulmonary tuberculosis patients by sex and 5-year age group, 2016



Previous Fig. Proportion of far-advanced cavitory cases among newly notified pulmonary Tuberculosis patients, 1975-2016

Previous table Proportion of cavitory or/and sputum smear positive cases among newly notified pulmonary TB patients aged 30-59 years, 2016

	Male								Female							
	Pulmonary TB	Cavitory or sputum smear(+)			Cavitory and sputum smear(+)			Pulmonary TB	Cavitory or sputum smear(+)			Cavitory and sputum smear(+)				
		n	%	Ratio	n	%	Ratio		n	%	Ratio	n	%	Ratio		
Service workers	114	67	58.8	1.9	36	31.6	2.7	84	41	48.8	1.4	15	17.9	1.6		
Medical workers	51	16	31.4	1.0	6	11.8	1.0	211	72	34.1	1.0	24	11.4	1.0		
Teachers/ Nursery nurses	15	6	40.0	1.3	1	6.7	0.6	21	13	61.9	1.8	6	28.6	2.5		
Other regular workers	971	462	47.6	1.5	212	21.8	1.9	242	95	39.3	1.2	25	10.3	0.9		
Other temporary/ daily workers	135	87	64.4	2.1	45	33.3	2.8	97	44	45.4	1.3	22	22.7	2.0		
Other self-employed	118	76	64.4	2.1	44	37.3	3.2	23	10	43.5	1.3	3	13.0	1.1		
Jobless	308	208	67.5	2.2	107	34.7	3.0	186	92	49.5	1.4	41	22.0	1.9		
Others	115	65	56.5	1.8	24	20.9	1.8	166	68	41.0	1.2	22	13.3	1.2		
Total	1,827	987	54.0		475	26.0		1,030	435	42.2		158	15.3			

Others : Houskeepers/ Students/ Unknown

Ratio : The ratio of each proportion to that of medical workers

Previous table Drug susceptibility test results among newly notified pulmonary tuberculosis patients, by sex and age group, 2015 and 2007–2016

Age group	Total										New treatment (Re-count)									
	Male					Female					Male					Female				
	DST result obtained	MDR	Any INH resist-ance	Any RFP resist-ance	*Any resist-ance	DST result obtained	MDR	Any INH resist-ance	Any RFP resist-ance	*Any resist-ance	DST result obtained	MDR	Any INH resist-ance	Any RFP resist-ance	*Any resist-ance	DST result obtained	MDR	Any INH resist-ance	Any RFP resist-ance	*Any resist-ance
2016 Calendar year																				
Total	4,914	31	247	44	511	2,818	18	122	30	230	4,579	23	213	32	456	2,699	14	103	24	203
0-19	54	1	8	1	10	35	0	5	0	8	53	1	8	1	10	31	0	5	0	7
20-29	266	4	23	5	47	225	5	16	9	33	258	3	22	4	45	218	4	14	7	30
30-39	238	2	18	2	36	195	4	16	4	24	228	2	18	2	35	189	3	15	3	23
40-49	357	2	14	4	43	179	1	10	3	19	331	2	13	4	39	174	1	9	3	18
50-59	437	3	23	4	52	137	1	6	1	11	417	3	21	3	48	128	1	5	1	10
60-69	779	6	42	10	86	196	0	6	1	20	735	5	35	8	75	188	0	5	1	18
70-79	1,002	7	65	9	124	421	0	19	1	33	932	2	51	3	107	405	0	16	0	29
80+	1,781	6	54	9	113	1,430	7	44	11	82	1,625	5	45	7	97	1,366	5	34	9	68
2007-2016 Calendar year																				
総数 Total	46,604	353	2,361	501	5,486	24,302	189	1,077	260	2,444	42,241	223	1,921	326	4,757	22,810	117	879	172	2,146
0-19	341	7	32	7	63	301	2	26	3	61	326	5	30	5	61	285	2	24	3	56
20-29	2,346	48	173	60	404	1,998	51	157	68	333	2,246	36	152	46	377	1,910	37	138	50	305
30-39	2,843	19	185	30	431	2,145	28	141	39	305	2,690	15	174	26	406	2,057	22	126	29	279
40-49	3,727	32	200	47	515	1,795	18	91	27	231	3,492	22	177	32	463	1,704	10	79	18	211
50-59	5,299	49	294	78	764	1,496	19	69	26	167	4,909	30	253	49	684	1,413	8	52	14	146
60-69	8,225	57	444	96	1,097	2,204	12	106	17	266	7,513	38	367	62	950	2,071	6	83	10	230
70-79	10,206	81	531	105	1,215	4,403	24	183	32	437	9,091	41	394	57	1,010	4,056	10	146	15	378
80+	13,617	60	502	78	997	9,960	35	304	48	644	11,974	36	374	49	806	9,314	22	231	33	541
2007-2016 Calendar year																				
Total	100%	0.8	5.1	1.1	11.8	100%	0.8	4.4	1.1	10.1	100%	0.5	4.5	0.8	11.3	100%	0.5	3.9	0.8	9.4
0-19	100	2.1	9.4	2.1	18.5	100	0.7	8.6	1.0	20.3	100	1.5	9.2	1.5	18.7	100	0.7	8.4	1.1	19.6
20-29	100	2.0	7.4	2.6	17.2	100	2.6	7.9	3.4	16.7	100	1.6	6.8	2.0	16.8	100	1.9	7.2	2.6	16.0
30-39	100	0.7	6.5	1.1	15.2	100	1.3	6.6	1.8	14.2	100	0.6	6.5	1.0	15.1	100	1.1	6.1	1.4	13.6
40-49	100	0.9	5.4	1.3	13.8	100	1.0	5.1	1.5	12.9	100	0.6	5.1	0.9	13.3	100	0.6	4.6	1.1	12.4
50-59	100	0.9	5.5	1.5	14.4	100	1.3	4.6	1.7	11.2	100	0.6	5.2	1.0	13.9	100	0.6	3.7	1.0	10.3
60-69	100	0.7	5.4	1.2	13.3	100	0.5	4.8	0.8	12.1	100	0.5	4.9	0.8	12.6	100	0.3	4.0	0.5	11.1
70-79	100	0.8	5.2	1.0	11.9	100	0.5	4.2	0.7	9.9	100	0.5	4.3	0.6	11.1	100	0.2	3.6	0.4	9.3
80+	100	0.4	3.7	0.6	7.3	100	0.4	3.1	0.5	6.5	100	0.3	3.1	0.4	6.7	100	0.2	2.5	0.4	5.8

DST: Drug susceptibility test. MDR: Multi-drug resistance, i.e., resistant to at least INH and RFP. INH: Isoniazid. RFP: Rifampicin.

Previous table Drug susceptibility test results among newly notified pulmonary tuberculosis patients, by sex and age group, 2007-2016 (Re-count of foreigners)

Age group	Total										New treatment (Re-count)											
	Male					Female					Male					Female						
	DST result obtained	MDR	Any INH resistance	Any RFP resistance	* Any resistance	DST result obtained	MDR	Any INH resistance	Any RFP resistance	* Any resistance	DST result obtained	MDR	Any INH resistance	Any RFP resistance	* Any resistance	DST result obtained	MDR	Any INH resistance	Any RFP resistance	* Any resistance		
2007-2016 Calendar year																						
Total	1447	57	162	65	267	0	1577	73	202	93	318	1374	37	135	46	239	0	1494	54	176	69	282
0-19	87	6	21	6	29	0	57	1	9	2	11	84	4	19	4	27	0	55	1	8	2	10
20-29	729	39	88	45	142	0	704	44	103	57	168	701	28	72	34	128	0	677	33	89	43	150
30-39	252	6	21	7	39	0	397	17	57	19	78	241	5	20	6	37	0	373	13	52	14	71
40-49	124	4	13	5	25	0	224	4	18	6	35	113	0	8	0	18	0	208	1	15	2	30
50-59	82	0	3	0	7	0	85	4	9	5	13	78	0	3	0	7	0	79	4	7	5	10
60-69	72	2	10	2	16	0	45	1	3	2	5	65	2	8	2	14	0	44	1	3	2	5
70-79	53	0	4	0	5	0	27	2	3	2	4	49	0	4	0	5	0	21	1	2	1	2
80+	48	0	2	0	4	0	38	0	0	0	4	43	0	1	0	3	0	37	0	0	0	4
2007-2016 Calendar year																						
Total	100%	3.9	11.2	4.5	18.5		100%	4.6	12.8	5.9	20.2	100%	2.7	9.8	3.3	17.4		100%	3.6	11.8	4.6	18.9
0-19	100	6.9	24.1	6.9	33.3		100	1.8	15.8	3.5	19.3	100	4.8	22.6	4.8	32.1		100	1.8	14.5	3.6	18.2
20-29	100	5.3	12.1	6.2	19.5		100	6.3	14.6	8.1	23.9	100	4.0	10.3	4.9	18.3		100	4.9	13.1	6.4	22.2
30-39	100	2.4	8.3	2.8	15.5		100	4.3	14.4	4.8	19.6	100	2.1	8.3	2.5	15.4		100	3.5	13.9	3.8	19.0
40-49	100	3.2	10.5	4.0	20.2		100	1.8	8.0	2.7	15.6	100	0.0	7.1	0.0	15.9		100	0.5	7.2	1.0	14.4
50-59	100	0.0	3.7	0.0	8.5		100	4.7	10.6	5.9	15.3	100	0.0	3.8	0.0	9.0		100	5.1	8.9	6.3	12.7
60-69	100	2.8	13.9	2.8	22.2		100	2.2	6.7	4.4	11.1	100	3.1	12.3	3.1	21.5		100	2.3	6.8	4.5	11.4
70-79	100	0.0	7.5	0.0	9.4		100	7.4	11.1	7.4	14.8	100	0.0	8.2	0.0	10.2		100	4.8	9.5	4.8	9.5
80+	100	0.0	4.2	0.0	8.3		100	0.0	0.0	0.0	10.5	100	0.0	2.3	0.0	7.0		100	0.0	0.0	0.0	10.8

DST: Drug susceptibility test. MDR: Multi-drug resistance, i.e., resistant to at least INH and RFP. INH: Isoniazid. RFP: Rifampicin.