



Monthly Report of Tuberculosis Surveillance, Japan – May, 2017

The reporting and recording of tuberculosis (TB) and Latent TB Infection (LTBI) are managed at public health centers (PHCs) by the nationwide computerized TB surveillance system in Japan. A monthly report is compiled from the database automatically and regularly on 4th Friday of the next month, and an annual report is also produced much like the monthly report, but with sufficient time for data correction.

Tables and figures shown in the monthly reports are as follows.

Figures

- Figure 1. Number of newly notified TB cases by month, Japan, 2017
- Figure 2. Newly notified TB cases by sex and age, Japan, summation (Jan. - May.) 2017
- Figure 3. Notification rate of TB cases by sex and age, Japan, summation (Jan. - May.) 2017
- Figure 4. Notification rate of TB by prefecture, Japan, summation (Jan. - May.) 2017
- Figure 5. Notification rate of TB by major city, Japan, summation (Jan. - May.) 2017
- Figure 6. Number of LTBI, Japan, 2017
- Figure 7. Number of LTBI by sex and age group, Japan, summation (Jan.- May.) 2017

Tables

- Table 1. Newly notified TB cases and rates by sex and age, Japan, 2017
- Table 2. Newly notified sputum smear positive pulmonary TB cases and rates by sex and age, Japan, 2017
- Table 3. Newly notified TB cases and rates by prefecture, Japan, 2017
- Table 4. Newly notified TB cases and rates by major city, Japan, 2017
- Table 5. LTBI cases and rates by sex and age, Japan, 2017
- Table 6. LTBI cases and rates by prefecture, Japan, 2017
- Table 7. LTBI cases and rates by major city, Japan, 2017

Figure 1. Number of newly notified TB cases by month, Japan, 2014-2017

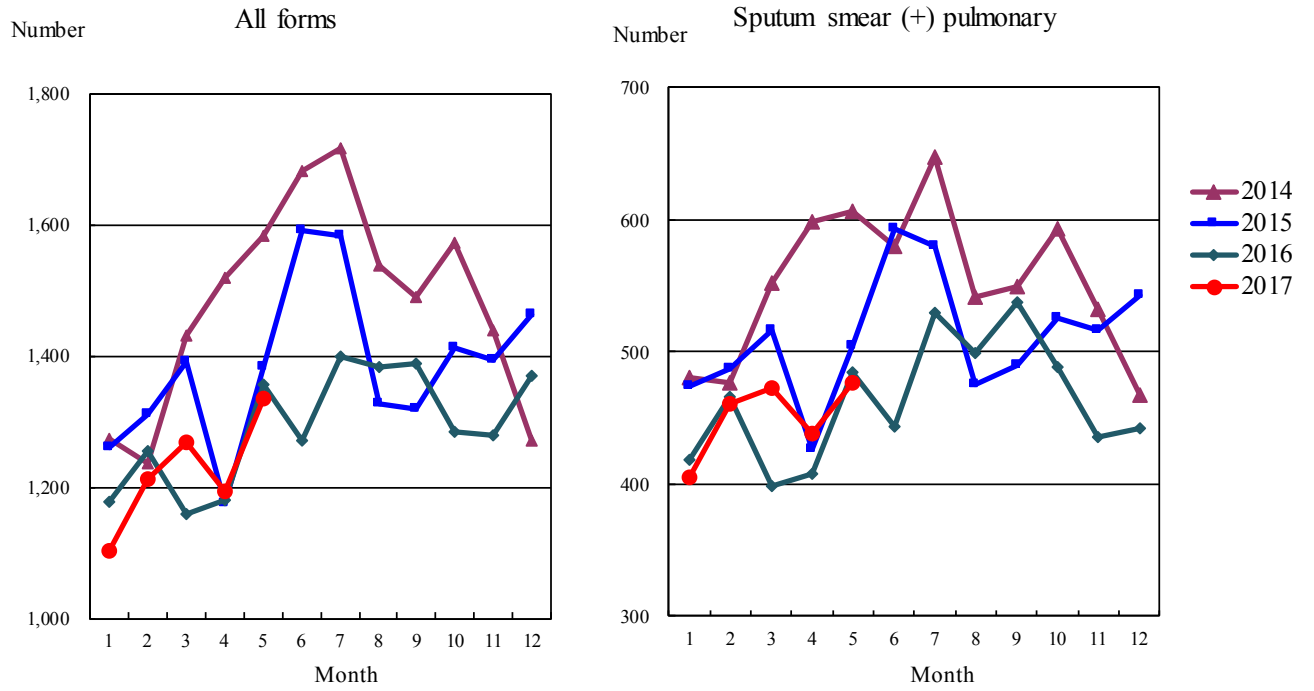


Figure 2. Newly notified TB patients by sex and age, Japan, summation (Jan.-May.) 2017

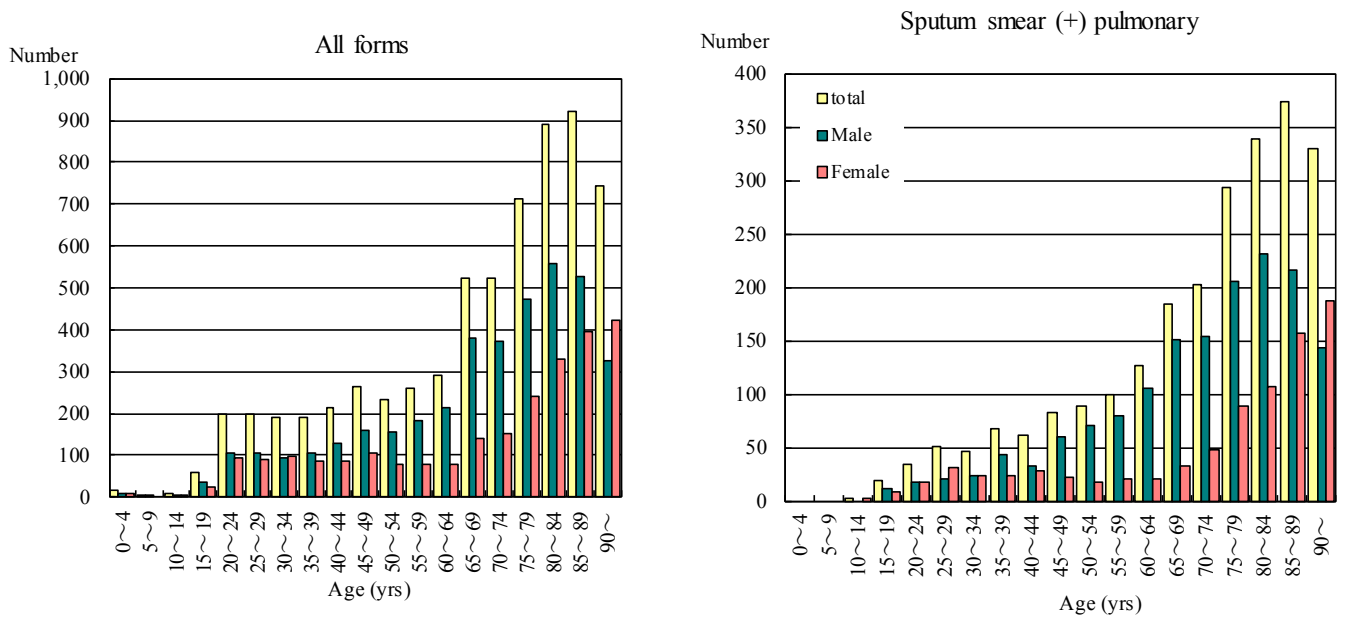


Figure 3. Notification rate of TB cases by sex and age, Japan, summation (Jan.-May.) 2017

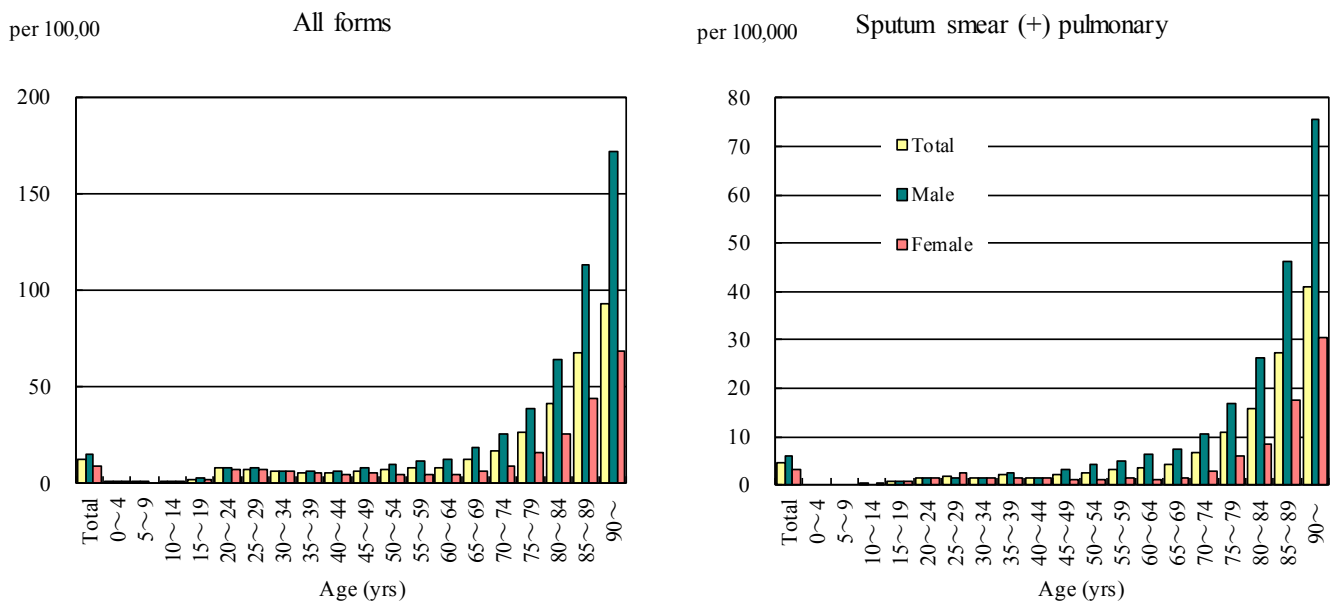


Figure 4. Notification rates of TB by prefecture, Japan, summation (Jan.-May.) 2017

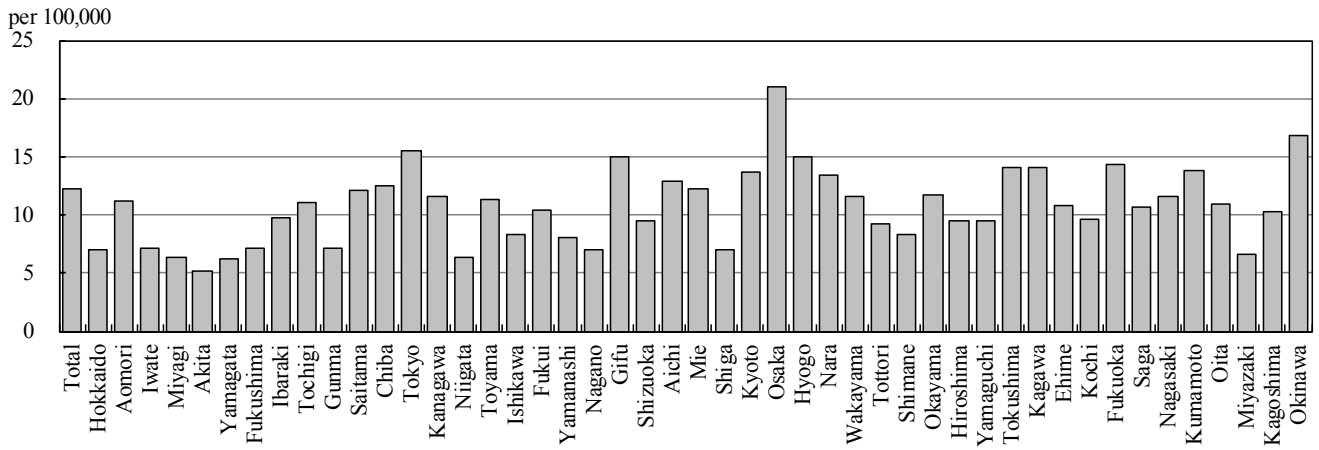


Figure 5. Notification rates of TB major city, Japan, summation (Jan.-May.) 2017

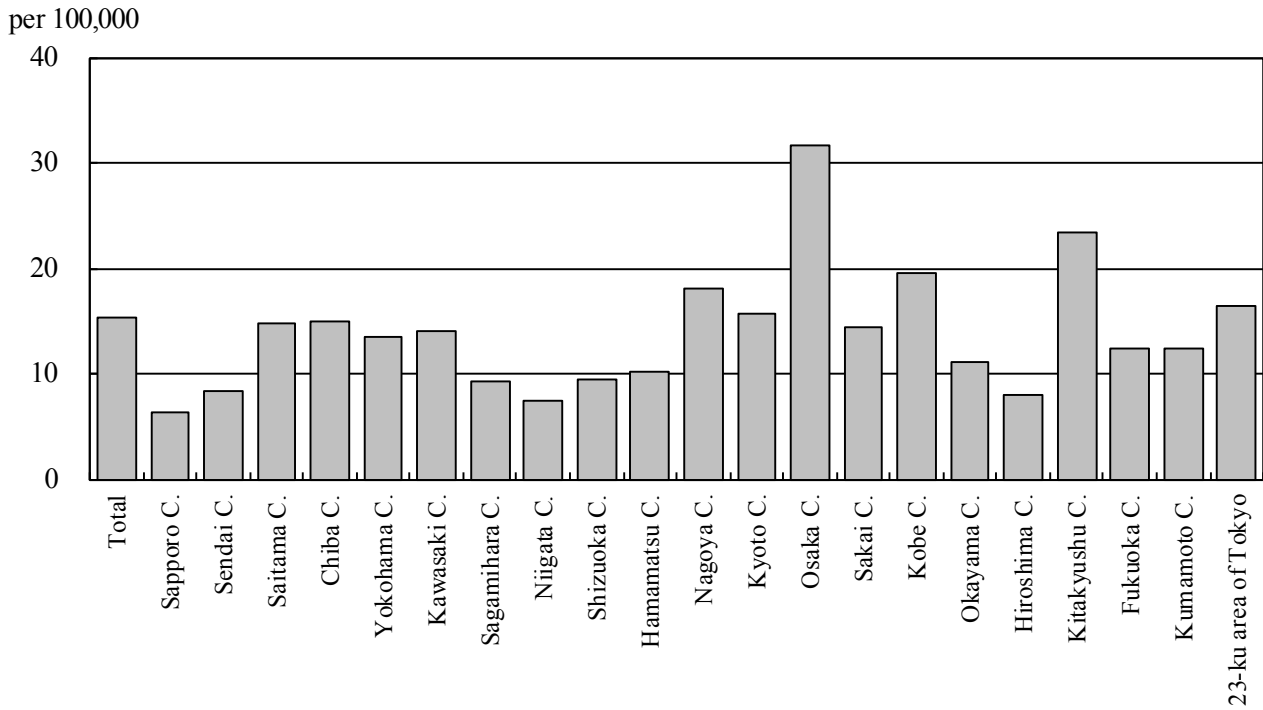


Figure 6. Number of LTBI, Japan, 2014-2017

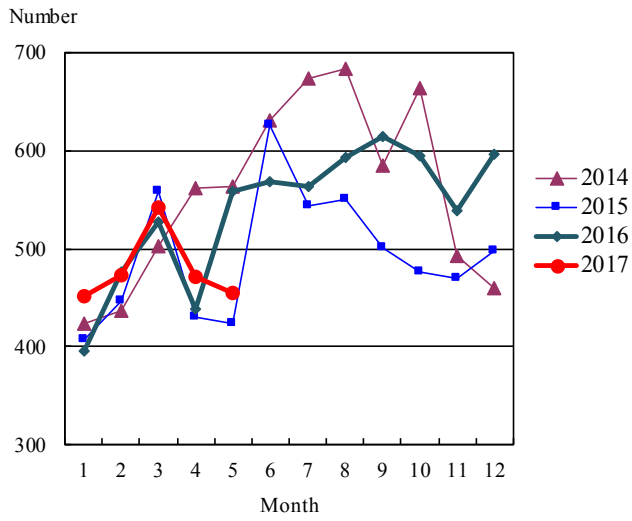


Figure 7. Number of LTBI by sex and age group, Japan, summation (Jan.-May.) 2017

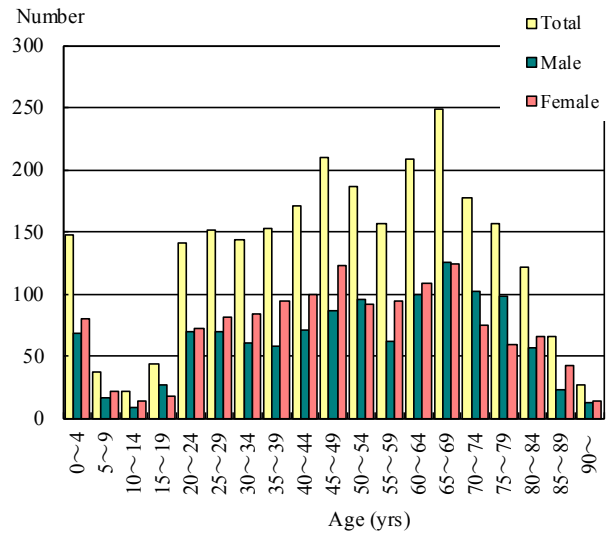


Table 1. Newly notified TB cases and rates by sex and age, Japan, 2017

	May.			Summation (Jan.-May.)			Notification rate (per 100,000)		
	Total	Male	Female	Total	Male	Female	Total	Male	Female
Total	1,334	818	516	6,442	3,931	2,511	12.2	15.3	9.2
0~4	6	4	2	16	8	8	0.8	0.8	0.8
5~9	1	1	0	2	2	0	0.1	0.2	0.0
10~14	4	1	3	10	4	6	0.4	0.3	0.5
15~19	13	7	6	60	35	25	2.4	2.7	2.0
20~24	63	34	29	200	106	94	7.8	8.0	7.5
25~29	40	20	20	197	106	91	7.4	7.8	7.0
30~34	52	22	30	192	93	99	6.3	6.1	6.7
35~39	30	15	15	190	104	86	5.6	6.1	5.2
40~44	38	25	13	215	130	85	5.3	6.3	4.3
45~49	44	28	16	263	159	104	6.8	8.1	5.4
50~54	47	32	15	234	157	77	7.1	9.5	4.7
55~59	59	44	15	259	182	77	8.2	11.6	4.9
60~64	64	41	23	291	212	79	8.6	12.7	4.6
65~69	103	81	22	523	381	142	12.2	18.4	6.4
70~74	95	70	25	522	371	151	16.9	25.8	9.2
75~79	146	101	45	712	471	241	26.2	38.9	16.0
80~84	188	112	76	889	558	331	41.2	63.9	25.7
85~89	188	105	83	922	528	394	67.6	113.1	43.9
90~	153	75	78	745	324	421	92.8	171.2	68.6

Temporary registrants = 48, Total of registrants and temporary registrants = 1,382

Rate: summation / (population*1/12)*100,000

Population: as of 1st Oct. 2016

Table 2. Newly notified sputum smear positive pulmonary TB cases and rates by sex and age, Japan, 2017

	May.			Summation (Jan.-May.)			Notification rate (per 100,000)		
	Total	Male	Female	Total	Male	Female	Total	Male	Female
Total	477	289	188	2,397	1,562	835	4.5	6.1	3.1
0~4	0	0	0	0	0	0	0.0	0.0	0.0
5~9	0	0	0	0	0	0	0.0	0.0	0.0
10~14	1	0	1	2	0	2	0.1	0.0	0.2
15~19	3	0	3	19	11	8	0.8	0.9	0.7
20~24	8	3	5	34	17	17	1.3	1.3	1.4
25~29	9	2	7	51	20	31	1.9	1.5	2.4
30~34	14	5	9	47	24	23	1.6	1.6	1.5
35~39	7	3	4	67	43	24	2.0	2.5	1.4
40~44	11	4	7	61	33	28	1.5	1.6	1.4
45~49	14	12	2	82	60	22	2.1	3.1	1.1
50~54	17	14	3	88	70	18	2.7	4.2	1.1
55~59	24	18	6	100	79	21	3.2	5.0	1.3
60~64	20	15	5	126	105	21	3.7	6.3	1.2
65~69	33	30	3	184	151	33	4.3	7.3	1.5
70~74	48	36	12	202	154	48	6.5	10.7	2.9
75~79	68	46	22	293	205	88	10.8	16.9	5.8
80~84	73	40	33	338	231	107	15.7	26.5	8.3
85~89	69	36	33	373	216	157	27.3	46.3	17.5
90~	58	25	33	330	143	187	41.1	75.6	30.5

Rate: summation / (population*1/12)*100,000

Population: as of 1st Oct. 2016

Table 3. Newly notified TB cases and rates by prefecture, Japan, 2017

	May.		Summation (Jan.-May.)		Notification rate (per 100,000)	
	Newly notified TB	Sputum smear (+)	Newly notified TB	Sputum smear (+)	Newly notified TB	Sputum smear (+)
Total	1,334	477	6,442	2,397	12.2	4.5
Hokkaido	39	13	156	53	7.0	2.4
Aomori	19	5	60	24	11.1	4.5
Iwate	9	4	38	10	7.2	1.9
Miyagi	17	4	62	20	6.4	2.1
Akita	7	3	22	10	5.2	2.4
Yamagata	4	2	29	17	6.3	3.7
Fukushima	16	6	57	23	7.2	2.9
Ibaraki	20	8	118	42	9.8	3.5
Tochigi	16	10	91	41	11.1	5.0
Gunma	9	5	58	15	7.1	1.8
Saitama	78	32	367	163	12.1	5.4
Chiba	74	19	326	115	12.5	4.4
Tokyo	179	52	883	319	15.6	5.6
Kanagawa	84	32	442	157	11.6	4.1
Niigata	9	1	61	20	6.4	2.1
Toyama	9	2	50	11	11.3	2.5
Ishikawa	10	2	40	15	8.3	3.1
Fukui	6	5	34	17	10.4	5.2
Yamanashi	13	3	28	10	8.1	2.9
Nagano	9	1	61	24	7.0	2.8
Gifu	27	7	126	40	15.0	4.7
Shizuoka	28	8	146	51	9.5	3.3
Aichi	70	16	404	135	12.9	4.3
Mie	20	4	92	33	12.2	4.4
Shiga	7	3	41	10	7.0	1.7
Kyoto	32	11	149	63	13.7	5.8
Osaka	180	82	773	316	21.0	8.6
Hyogo	64	24	345	126	15.0	5.5
Nara	11	5	76	34	13.4	6.0
Wakayama	6	1	46	19	11.6	4.8
Tottori	4	2	22	8	9.3	3.4
Shimane	4	1	24	11	8.3	3.8
Okayama	18	8	93	35	11.7	4.4
Hiroshima	20	5	112	33	9.5	2.8
Yamaguchi	13	4	55	12	9.5	2.1
Tokushima	6	2	44	12	14.1	3.8
Kagawa	10	3	57	29	14.1	7.2
Ehime	13	5	62	21	10.8	3.7
Kochi	7	1	29	8	9.7	2.7
Fukuoka	80	39	304	117	14.3	5.5
Saga	8	4	37	21	10.7	6.1
Nagasaki	13	6	66	28	11.6	4.9
Kumamoto	20	8	102	36	13.8	4.9
Oita	16	8	53	19	11.0	3.9
Miyazaki	3	1	30	17	6.6	3.7
Kagoshima	13	4	70	19	10.3	2.8
Okinawa	14	6	101	38	16.8	6.3

Rate: summation / (population*1/12)*100,000

Population: as of 1st Oct. 2016

Table 4. Newly notified TB cases and rates by major city, Japan, 2017

	May.		Summation (Jan.-May.)		Notification Rate (per 100,000)	
	Newly notified TB	Sputum Smear(+)	Newly notified TB	Sputum Smear(+)	Newly notified TB	Sputum Smear(+)
Total	511	190	2,369	876	15.4	5.7
Sapporo City	17	7	52	14	6.4	1.7
Sendai City	11	2	38	12	8.4	2.7
Saitama City	15	9	79	36	14.8	6.8
Chiba City	17	6	61	26	15.0	6.4
Yokohama City	39	17	210	70	13.5	4.5
Kawasaki City	25	9	87	33	14.0	5.3
Sagamihara City	4	1	28	12	9.3	4.0
Niigata City	2	0	25	8	7.4	2.4
Shizuoka City	0	0	28	8	9.5	2.7
Hamamatsu City	10	2	34	13	10.2	3.9
Nagoya City	35	9	173	57	18.0	5.9
Kyoto City	23	10	96	42	15.6	6.8
Osaka City	80	42	356	140	31.6	12.4
Sakai City	16	6	50	23	14.3	6.6
Kobe City	22	7	125	44	19.5	6.9
Okayama City	6	2	33	14	11.2	4.7
Hiroshima City	7	2	40	16	8.0	3.2
Kitakyushu City	25	11	93	36	23.3	9.0
Fukuoka City	25	13	80	34	12.4	5.3
Kumamoto City	8	2	38	13	12.3	4.2
23-ku area of Tokyo	124	33	643	225	16.5	5.8

Rate: summation / (population*1/12)*100,000

Population: as of 1st Oct. 2016

Major city: city with a population of one million or more.

Table 4 is a re-count of Table 3.

Table 5. LTBI cases and rates by sex and age, Japan, 2017

	May.			Summation (Jan.-May.)			(Ratio) LTBI/Newly notified cases		
	Total	Male	Female	Total	Male	Female	Total	Male	Female
Total	455	201	254	2,566	1,208	1,358	0.4	0.3	0.5
0~4	32	13	19	148	68	80	9.3	8.5	10.0
5~9	9	5	4	37	16	21	18.5	8.0	-
10~14	1	1	0	22	9	13	2.2	2.3	2.2
15~19	7	5	2	44	26	18	0.7	0.7	0.7
20~24	25	12	13	141	69	72	0.7	0.7	0.8
25~29	28	9	19	151	70	81	0.8	0.7	0.9
30~34	29	11	18	144	60	84	0.8	0.6	0.8
35~39	21	5	16	152	58	94	0.8	0.6	1.1
40~44	24	9	15	171	71	100	0.8	0.5	1.2
45~49	40	19	21	210	87	123	0.8	0.5	1.2
50~54	37	15	22	187	96	91	0.8	0.6	1.2
55~59	17	4	13	156	62	94	0.6	0.3	1.2
60~64	38	17	21	208	100	108	0.7	0.5	1.4
65~69	59	30	29	249	125	124	0.5	0.3	0.9
70~74	32	20	12	177	102	75	0.3	0.3	0.5
75~79	24	16	8	157	98	59	0.2	0.2	0.2
80~84	20	8	12	121	56	65	0.1	0.1	0.2
85~89	10	2	8	65	23	42	0.1	0.0	0.1
90~	2	0	2	26	12	14	0.0	0.0	0.0

LTBI: latent TB Infection

Number of LTBI is not included in the newly notified TB patients

Table 6. LTBI cases and rates by prefecture, Japan, 2017

	May.	Summation (Jan.-May.)	
	LTBI	LTBI	(Ratio) LTBI /new TB
Total	455	2,566	0.40
Hokkaido	21	88	0.56
Aomori	7	63	1.05
Iwate	3	30	0.79
Miyagi	3	38	0.61
Akita	3	21	0.95
Yamagata	1	9	0.31
Fukushima	4	22	0.39
Ibaraki	8	60	0.51
Tochigi	1	18	0.20
Gunma	6	21	0.36
Saitama	23	136	0.37
Chiba	28	185	0.57
Tokyo	60	346	0.39
Kanagawa	25	161	0.36
Niigata	8	25	0.41
Toyama	6	24	0.48
Ishikawa	2	14	0.35
Fukui	3	12	0.35
Yamanashi	1	9	0.32
Nagano	19	56	0.92
Gifu	10	52	0.41
Shizuoka	11	48	0.33
Aichi	15	144	0.36
Mie	5	20	0.22
Shiga	6	34	0.83
Kyoto	10	76	0.51
Osaka	37	216	0.28
Hyogo	28	110	0.32
Nara	13	46	0.61
Wakayama	4	19	0.41
Tottori	0	3	0.14
Shimane	1	22	0.92
Okayama	9	60	0.65
Hiroshima	5	37	0.33
Yamaguchi	2	24	0.44
Tokushima	4	10	0.23
Kagawa	1	9	0.16
Ehime	3	18	0.29
Kochi	0	3	0.10
Fukuoka	22	94	0.31
Saga	1	8	0.22
Nagasaki	9	39	0.59
Kumamoto	5	12	0.12
Oita	7	32	0.60
Miyazaki	0	16	0.53
Kagoshima	4	18	0.26
Okinawa	11	58	0.57

LTBI: Latent TB Infection

Number of LTBI is not included in the newly notified TB patients.

Table 7. LTBI cases and rates by major city, Japan, 2017

	May.	Summation (Jan.-May.)	
	LTBI	LTBI	(Ratio) LTBI / new TB
Total	123	865	0.37
Sapporo City	6	39	0.75
Sendai City	1	19	0.50
Saitama City	4	18	0.23
Chiba City	4	21	0.34
Yokohama City	6	70	0.33
Kawasaki City	5	28	0.32
Sagamihara City	0	7	0.25
Niigata City	3	10	0.40
Shizuoka City	0	4	0.14
Hamamatsu City	2	10	0.29
Nagoya City	4	59	0.34
Kyoto City	7	57	0.59
Osaka City	10	91	0.26
Sakai City	6	19	0.38
Kobe City	9	41	0.33
Okayama City	5	42	1.27
Hiroshima City	2	16	0.40
Kitakyushu City	5	29	0.31
Fukuoka City	5	28	0.35
Kumamoto City	0	4	0.11
23-ku area of Tokyo	39	253	0.39

LTBI: Latent TB Infection

Number of LTBI is not included in the newly notified TB patients,

Major city: city with a population of one million or more

Table 7 is a re-count of Table 6