



Monthly Report of Tuberculosis Surveillance, Japan – September, 2017

The reporting and recording of tuberculosis (TB) and Latent TB Infection (LTBI) are managed at public health centers (PHCs) by the nationwide computerized TB surveillance system in Japan. A monthly report is compiled from the database automatically and regularly on 4th Friday of the next month, and an annual report is also produced much like the monthly report, but with sufficient time for data correction.

Tables and figures shown in the monthly reports are as follows.

Figures

Figure 1. Number of newly notified TB cases by month, Japan, 2017

Figure 2. Newly notified TB cases by sex and age, Japan, summation (Jan. - Sep.) 2017

Figure 3. Notification rate of TB cases by sex and age, Japan, summation (Jan. - Sep.) 2017

Figure 4. Notification rate of TB by prefecture, Japan, summation (Jan. - Sep.) 2017

Figure 5. Notification rate of TB by major city, Japan, summation (Jan. - Sep.) 2017

Figure 6. Number of LTBI, Japan, 2017

Figure 7. Number of LTBI by sex and age group, Japan, summation (Jan. - Sep.) 2017

Tables

Table 1. Newly notified TB cases and rates by sex and age, Japan, 2017

Table 2. Newly notified sputum smear positive pulmonary TB cases and rates by sex and age, Japan, 2017

Table 3. Newly notified TB cases and rates by prefecture, Japan, 2017

Table 4. Newly notified TB cases and rates by major city, Japan, 2017

Table 5. LTBI cases and rates by sex and age, Japan, 2017

Table 6. LTBI cases and rates by prefecture, Japan, 2017

Table 7. LTBI cases and rates by major city, Japan, 2017

Figure 1. Number of newly notified TB cases by month, Japan, 2014-2017

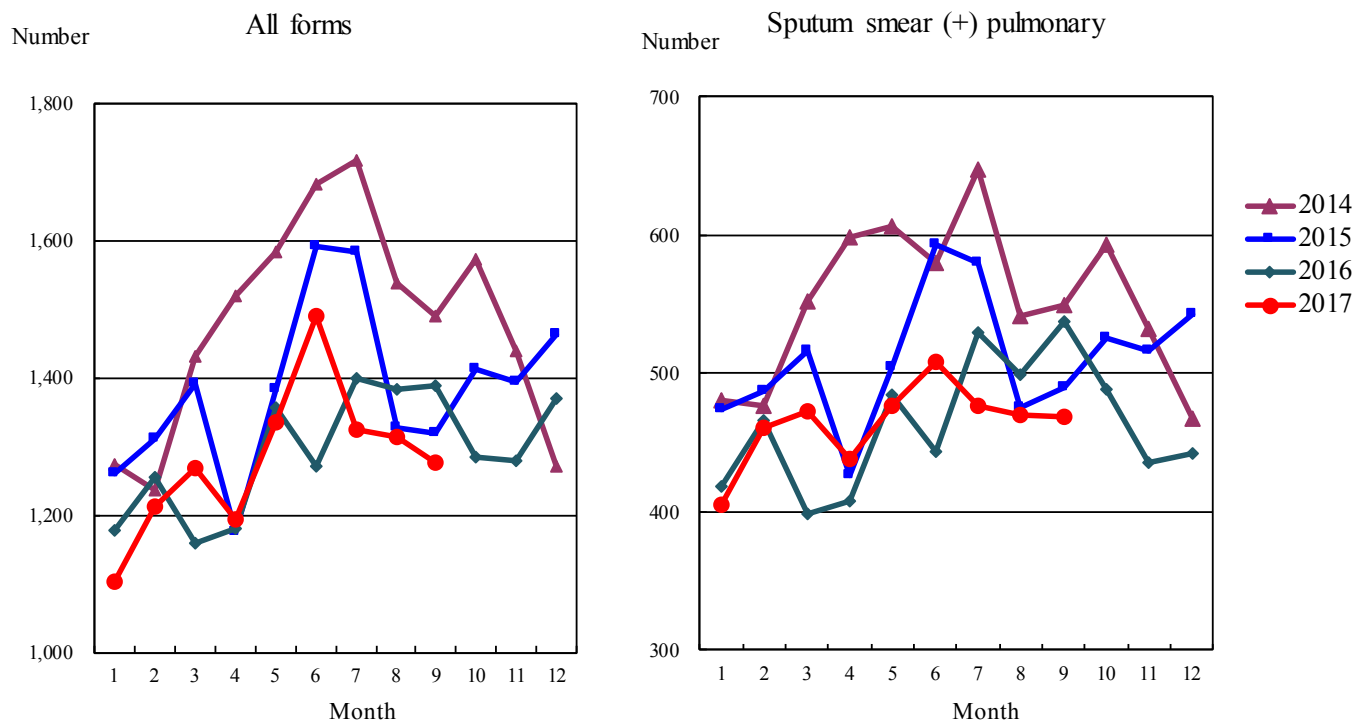


Figure 2. Newly notified TB patients by sex and age, Japan, summation (Jan.-Sep.) 2017

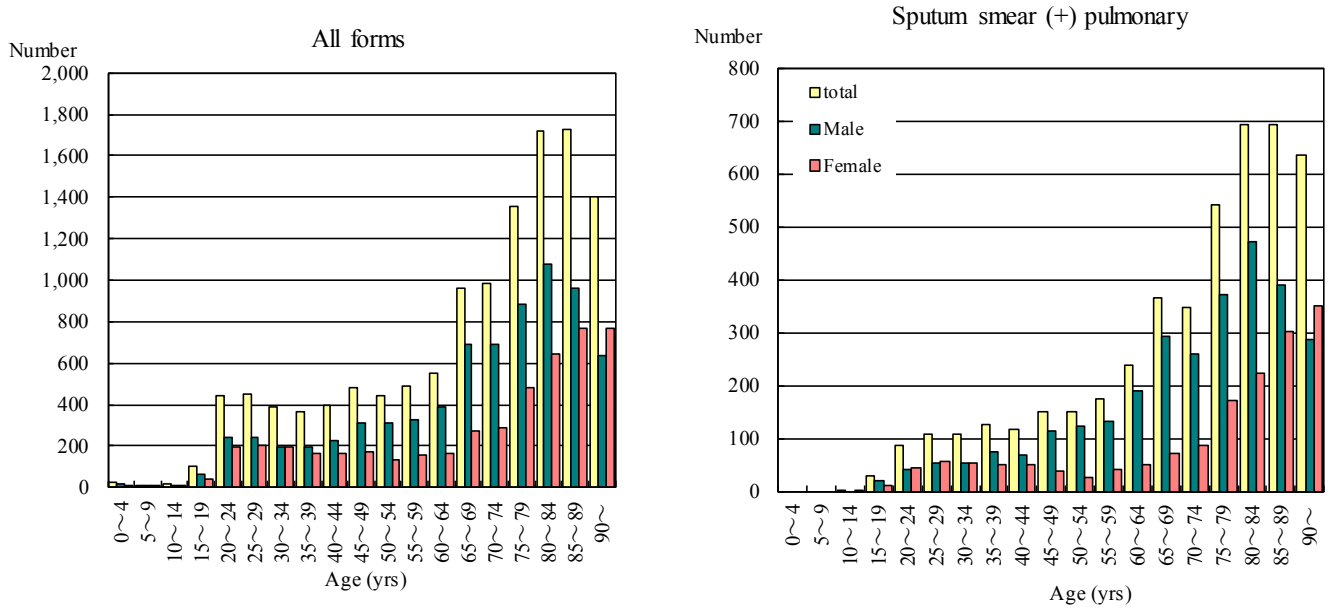


Figure 3. Notification rate of TB cases by sex and age, Japan, summation (Jan.-Sep.) 2017

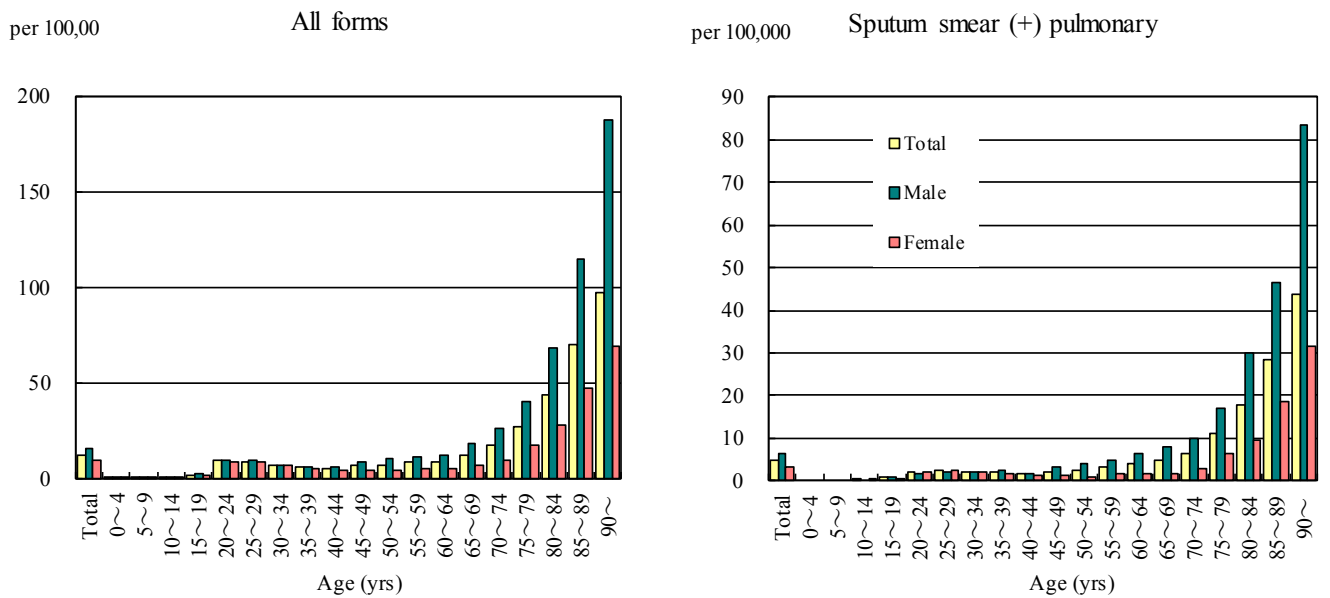


Figure 4. Notification rates of TB by prefecture, Japan, summation (Jan.-Sep.) 2017

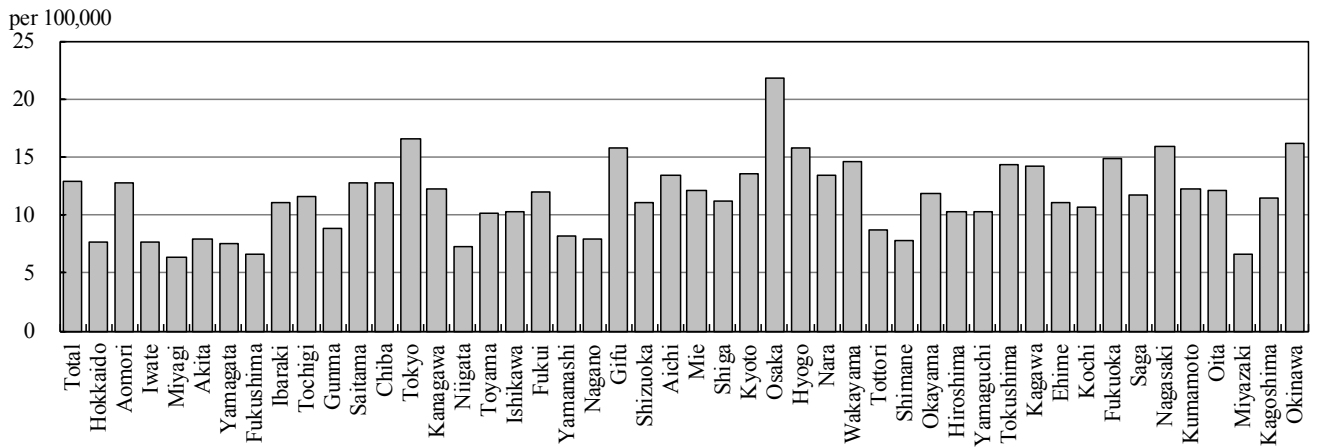


Figure 5. Notification rates of TB major city, Japan, summation (Jan.-Sep.) 2017

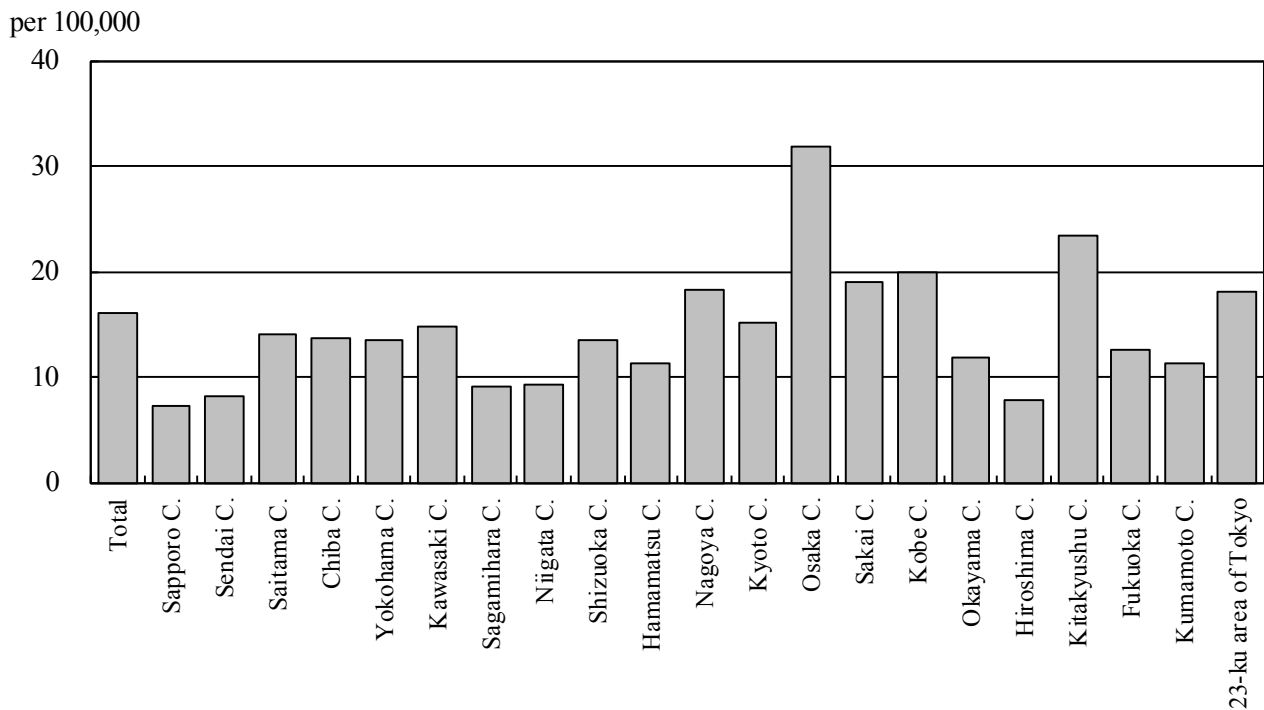


Figure 6. Number of LTBI, Japan, 2014-2017

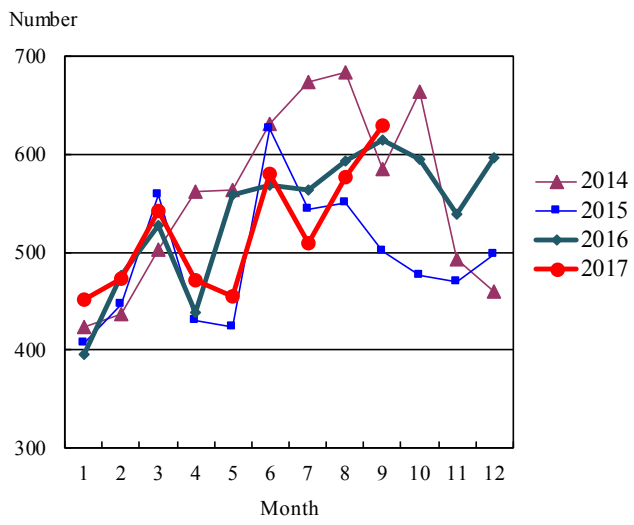


Figure 7. Number of LTBI by sex and age group, Japan, summation (Jan.-Sep.) 2017

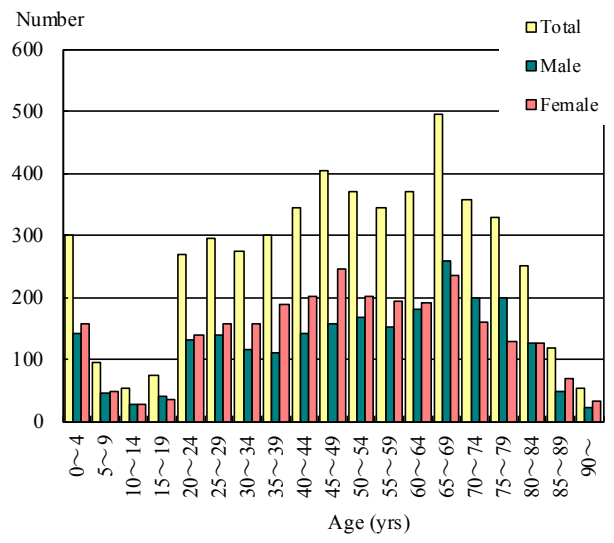


Table 1. Newly notified TB cases and rates by sex and age, Japan, 2017

	Sep.			Summation (Jan.-Sep.)			Notification rate (per 100,000)		
	Total	Male	Female	Total	Male	Female	Total	Male	Female
Total	1,277	747	530	12,295	7,470	4,825	12.9	16.1	9.9
0~4	4	4	0	25	16	9	0.7	0.8	0.5
5~9	1	1	0	5	4	1	0.1	0.2	0.1
10~14	0	0	0	14	5	9	0.3	0.2	0.4
15~19	9	5	4	105	63	42	2.3	2.7	1.9
20~24	46	24	22	440	244	196	9.5	10.3	8.7
25~29	66	34	32	448	243	205	9.3	9.9	8.7
30~34	32	13	19	387	193	194	7.1	7.0	7.2
35~39	27	16	11	365	197	168	6.0	6.4	5.6
40~44	39	21	18	395	230	165	5.4	6.2	4.6
45~49	54	39	15	484	314	170	7.0	8.9	4.9
50~54	36	24	12	441	310	131	7.4	10.4	4.4
55~59	46	27	19	486	328	158	8.6	11.6	5.6
60~64	63	39	24	552	389	163	9.0	12.9	5.2
65~69	112	86	26	960	688	272	12.5	18.5	6.8
70~74	92	66	26	981	691	290	17.7	26.7	9.8
75~79	142	89	53	1,359	880	479	27.8	40.4	17.6
80~84	164	91	73	1,718	1,074	644	44.2	68.3	27.8
85~89	193	105	88	1,728	963	765	70.4	114.6	47.3
90~	151	63	88	1,402	638	764	97.0	187.3	69.1

Temporary registrants = 42, Total of registrants and temporary registrants = 1,319

Rate: summation / (population*1/12)*100,000

Population: as of 1st Oct. 2016

Table 2. Newly notified sputum smear positive pulmonary TB cases and rates by sex and age, Japan, 2017

	Sep.			Summation (Jan.-Sep.)			Notification rate (per 100,000)		
	Total	Male	Female	Total	Male	Female	Total	Male	Female
Total	468	293	175	4,564	2,941	1,623	4.8	6.3	3.3
0~4	0	0	0	0	0	0	0.0	0.0	0.0
5~9	0	0	0	0	0	0	0.0	0.0	0.0
10~14	0	0	0	3	0	3	0.1	0.0	0.1
15~19	0	0	0	30	20	10	0.7	0.9	0.5
20~24	8	4	4	86	42	44	1.9	1.8	2.0
25~29	17	10	7	107	52	55	2.2	2.1	2.3
30~34	5	2	3	107	53	54	2.0	1.9	2.0
35~39	8	6	2	125	74	51	2.1	2.4	1.7
40~44	9	7	2	117	67	50	1.6	1.8	1.4
45~49	15	12	3	151	114	37	2.2	3.2	1.1
50~54	10	9	1	151	124	27	2.5	4.2	0.9
55~59	12	9	3	174	132	42	3.1	4.7	1.5
60~64	23	15	8	238	189	49	3.9	6.3	1.6
65~69	49	40	9	365	294	71	4.7	7.9	1.8
70~74	29	23	6	347	260	87	6.2	10.0	2.9
75~79	61	43	18	542	372	170	11.1	17.1	6.3
80~84	64	38	26	694	472	222	17.9	30.0	9.6
85~89	78	41	37	693	391	302	28.2	46.5	18.7
90~	80	34	46	634	285	349	43.9	83.7	31.6

Rate: summation / (population*1/12)*100,000

Population: as of 1st Oct. 2016

Table 3. Newly notified TB cases and rates by prefecture, Japan, 2017

	Sep.		Summation (Jan.-Sep.)		Notification rate (per 100,000)	
	Newly notified TB	Sputum smear (+)	Newly notified TB	Sputum smear (+)	Newly notified TB	Sputum smear (+)
Total	1,277	468	12,295	4,564	12.9	4.8
Hokkaido	32	5	309	103	7.7	2.6
Aomori	17	6	124	56	12.8	5.8
Iwate	6	1	73	18	7.7	1.9
Miyagi	10	2	111	34	6.4	1.9
Akita	13	4	60	22	7.9	2.9
Yamagata	7	1	63	26	7.5	3.1
Fukushima	11	5	94	37	6.6	2.6
Ibaraki	25	7	240	93	11.0	4.3
Tochigi	24	12	171	75	11.6	5.1
Gunma	8	2	131	36	8.9	2.4
Saitama	61	17	701	287	12.8	5.2
Chiba	59	16	595	203	12.7	4.3
Tokyo	204	73	1,691	591	16.5	5.8
Kanagawa	71	28	838	298	12.2	4.3
Niigata	17	5	125	48	7.3	2.8
Toyama	6	2	81	18	10.2	2.3
Ishikawa	4	1	89	32	10.3	3.7
Fukui	5	0	70	29	11.9	4.9
Yamanashi	3	1	51	24	8.2	3.9
Nagano	16	8	123	46	7.9	2.9
Gifu	19	6	239	82	15.8	5.4
Shizuoka	22	7	307	103	11.1	3.7
Aichi	81	34	756	262	13.4	4.7
Mie	17	8	165	68	12.2	5.0
Shiga	12	3	118	38	11.1	3.6
Kyoto	26	12	265	115	13.6	5.9
Osaka	169	81	1,443	603	21.8	9.1
Hyogo	65	27	652	243	15.7	5.9
Nara	16	7	136	60	13.4	5.9
Wakayama	14	6	104	40	14.5	5.6
Tottori	2	1	37	12	8.7	2.8
Shimane	2	0	40	19	7.7	3.7
Okayama	9	5	171	73	11.9	5.1
Hiroshima	25	10	218	76	10.2	3.6
Yamaguchi	13	4	107	32	10.2	3.1
Tokushima	8	4	81	25	14.4	4.4
Kagawa	9	3	104	44	14.3	6.0
Ehime	15	4	114	45	11.1	4.4
Kochi	9	2	58	19	10.7	3.5
Fukuoka	66	22	567	211	14.8	5.5
Saga	8	1	73	34	11.7	5.5
Nagasaki	14	6	163	57	15.9	5.6
Kumamoto	15	4	162	58	12.2	4.4
Oita	12	8	105	43	12.1	4.9
Miyazaki	1	0	54	27	6.6	3.3
Kagoshima	12	3	141	41	11.5	3.3
Okinawa	17	4	175	58	16.2	5.4

Rate: summation / (population*1/12)*100,000

Population: as of 1st Oct. 2016

Table 4. Newly notified TB cases and rates by major city, Japan, 2017

	Sep.		Summation (Jan.-Sep.)		Notification Rate (per 100,000)	
	Newly notified TB	Sputum Smear(+)	Newly notified TB	Sputum Smear(+)	Newly notified TB	Sputum Smear(+)
Total	469	177	4,453	1,636	16.1	5.9
Sapporo City	12	3	106	34	7.2	2.3
Sendai City	6	2	67	20	8.2	2.5
Saitama City	9	4	134	59	14.0	6.1
Chiba City	10	6	100	40	13.7	5.5
Yokohama City	34	12	377	120	13.5	4.3
Kawasaki City	17	9	166	69	14.9	6.2
Sagamihara City	3	0	49	22	9.1	4.1
Niigata City	6	3	56	23	9.2	3.8
Shizuoka City	1	1	72	22	13.5	4.1
Hamamatsu City	7	2	68	23	11.4	3.8
Nagoya City	36	11	317	106	18.3	6.1
Kyoto City	19	8	168	74	15.2	6.7
Osaka City	73	37	646	261	31.9	12.9
Sakai City	15	6	119	52	18.9	8.3
Kobe City	20	6	230	89	20.0	7.7
Okayama City	3	1	63	27	11.9	5.1
Hiroshima City	3	0	70	28	7.8	3.1
Kitakyushu City	16	4	168	65	23.4	9.1
Fukuoka City	15	8	146	56	12.5	4.8
Kumamoto City	8	1	63	17	11.4	3.1
23-ku area of Tokyo	156	53	1,268	429	18.1	6.1

Rate: summation / (population*1/12)*100,000

Population: as of 1st Oct. 2016

Major city: city with a population of one million or more.

Table 4 is a re-count of Table 3.

Table 5. LTBI cases and rates by sex and age, Japan, 2017

	Sep.			Summation (Jan.-Sep.)			(Ratio) LTBI/Newly notified cases		
	Total	Male	Female	Total	Male	Female	Total	Male	Female
Total	629	310	319	5,096	2,403	2,693	0.4	0.3	0.6
0~4	34	14	20	300	142	158	12.0	8.9	17.6
5~9	15	6	9	95	46	49	19.0	11.5	49.0
10~14	5	1	4	54	27	27	3.9	5.4	3.0
15~19	9	5	4	73	39	34	0.7	0.6	0.8
20~24	25	12	13	269	130	139	0.6	0.5	0.7
25~29	39	20	19	296	140	156	0.7	0.6	0.8
30~34	39	15	24	273	115	158	0.7	0.6	0.8
35~39	26	10	16	300	111	189	0.8	0.6	1.1
40~44	52	26	26	343	142	201	0.9	0.6	1.2
45~49	49	24	25	404	158	246	0.8	0.5	1.4
50~54	42	15	27	370	168	202	0.8	0.5	1.5
55~59	47	19	28	345	151	194	0.7	0.5	1.2
60~64	46	27	19	371	181	190	0.7	0.5	1.2
65~69	61	40	21	494	259	235	0.5	0.4	0.9
70~74	42	28	14	358	199	159	0.4	0.3	0.5
75~79	45	21	24	329	200	129	0.2	0.2	0.3
80~84	33	19	14	250	125	125	0.1	0.1	0.2
85~89	11	5	6	118	48	70	0.1	0.0	0.1
90~	9	3	6	54	22	32	0.0	0.0	0.0

LTBI: latent TB Infection

Number of LTBI is not included in the newly notified TB patients

Table 6. LTBI cases and rates by prefecture, Japan, 2017

	Sep.	Summation (Jan.-Sep.)	
	LTBI	LTBI	(Ratio) LTBI / new TB
Total	629	5,096	0.41
Hokkaido	17	148	0.48
Aomori	8	99	0.80
Iwate	17	63	0.86
Miyagi	27	120	1.08
Akita	2	27	0.45
Yamagata	8	21	0.33
Fukushima	1	29	0.31
Ibaraki	15	125	0.52
Tochigi	2	40	0.23
Gunma	4	54	0.41
Saitama	52	326	0.47
Chiba	34	330	0.55
Tokyo	91	671	0.40
Kanagawa	42	365	0.44
Niigata	4	47	0.38
Toyama	9	49	0.60
Ishikawa	11	37	0.42
Fukui	11	37	0.53
Yamanashi	0	15	0.29
Nagano	9	95	0.77
Gifu	15	110	0.46
Shizuoka	6	103	0.34
Aichi	34	300	0.40
Mie	2	36	0.22
Shiga	5	61	0.52
Kyoto	11	118	0.45
Osaka	49	422	0.29
Hyogo	16	199	0.31
Nara	7	83	0.61
Wakayama	2	37	0.36
Tottori	1	5	0.14
Shimane	1	26	0.65
Okayama	13	110	0.64
Hiroshima	8	73	0.33
Yamaguchi	5	42	0.39
Tokushima	0	16	0.20
Kagawa	4	19	0.18
Ehime	5	41	0.36
Kochi	0	4	0.07
Fukuoka	38	235	0.41
Saga	2	19	0.26
Nagasaki	8	69	0.42
Kumamoto	6	39	0.24
Oita	6	64	0.61
Miyazaki	0	22	0.41
Kagoshima	8	48	0.34
Okinawa	13	97	0.55

LTBI: Latent TB Infection

Number of LTBI is not included in the newly notified TB patients.

Table 7. LTBI cases and rates by major city, Japan, 2017

	Sep.	Summation (Jan.-Sep.)	
	LTBI	LTBI	(Ratio) LTBI / new TB
Total	202	1,676	0.38
Sapporo City	5	64	0.60
Sendai City	22	81	1.21
Saitama City	1	33	0.25
Chiba City	3	38	0.38
Yokohama City	13	148	0.39
Kawasaki City	13	68	0.41
Sagamihara City	6	25	0.51
Niigata City	3	16	0.29
Shizuoka City	0	19	0.26
Hamamatsu City	0	19	0.28
Nagoya City	14	105	0.33
Kyoto City	8	83	0.49
Osaka City	15	168	0.26
Sakai City	8	38	0.32
Kobe City	6	68	0.30
Okayama City	4	65	1.03
Hiroshima City	2	25	0.36
Kitakyushu City	9	65	0.39
Fukuoka City	5	63	0.43
Kumamoto City	4	17	0.27
23-ku area of Tokyo	61	468	0.37

LTBI: Latent TB Infection

Number of LTBI is not included in the newly notified TB patients,

Major city: city with a population of one million or more

Table 7 is a re-count of Table 6