

【Childhood】

Table 1 Number and rates of childhood tuberculosis patients and specific extra-pulmonary tuberculosis, 1965–2017

Year	Newly notified tuberculosis aged 0–14 yrs		No. of meningeal tuberculosis		No. of miliary tuberculosis	
	Number	Rate	0–14 yrs	0–4 yrs (Rate)	0–14 yrs	0–4 yrs (Rate)
1965	44,180	175.6	—	—	—	—
1970	18,197	73.4	—	—	—	—
1975	4,905	18.0	28	22 (0.221)	—	—
1980	1,893	6.9	22	14 (0.164)	—	—
1985	1,088	4.2	—	—	—	—
1990	518	2.3	9	4 (0.061)	10	8 (0.122)
1995	340	1.7	8	8 (0.136)	8	8 (0.136)
2000	220	1.2	7	4 (0.069)	3	3 (0.052)
2005	117	0.67	3	1 (0.018)	3	1(0.018)
2010	89	0.53	0	0	0	0
2011	84	0.50	1	0	2	1(0.019)
2012	63	0.38	1	1(0.019)	0	0
2013	66	0.40	2	2(0.038)	0	0
2014	49	0.30	5	2(0.038)	2	1(0.019)
2015	51	0.32	1	1(0.020)	1	0
2016	59	0.4	2	2(0.040)	1	1(0.020)
2017	59	0.4	2	1(0.020)	3	3(0.061)

Extra-pulmonary tuberculosis: Cases are counted independently.

Rate: per 100,000

—: Not available

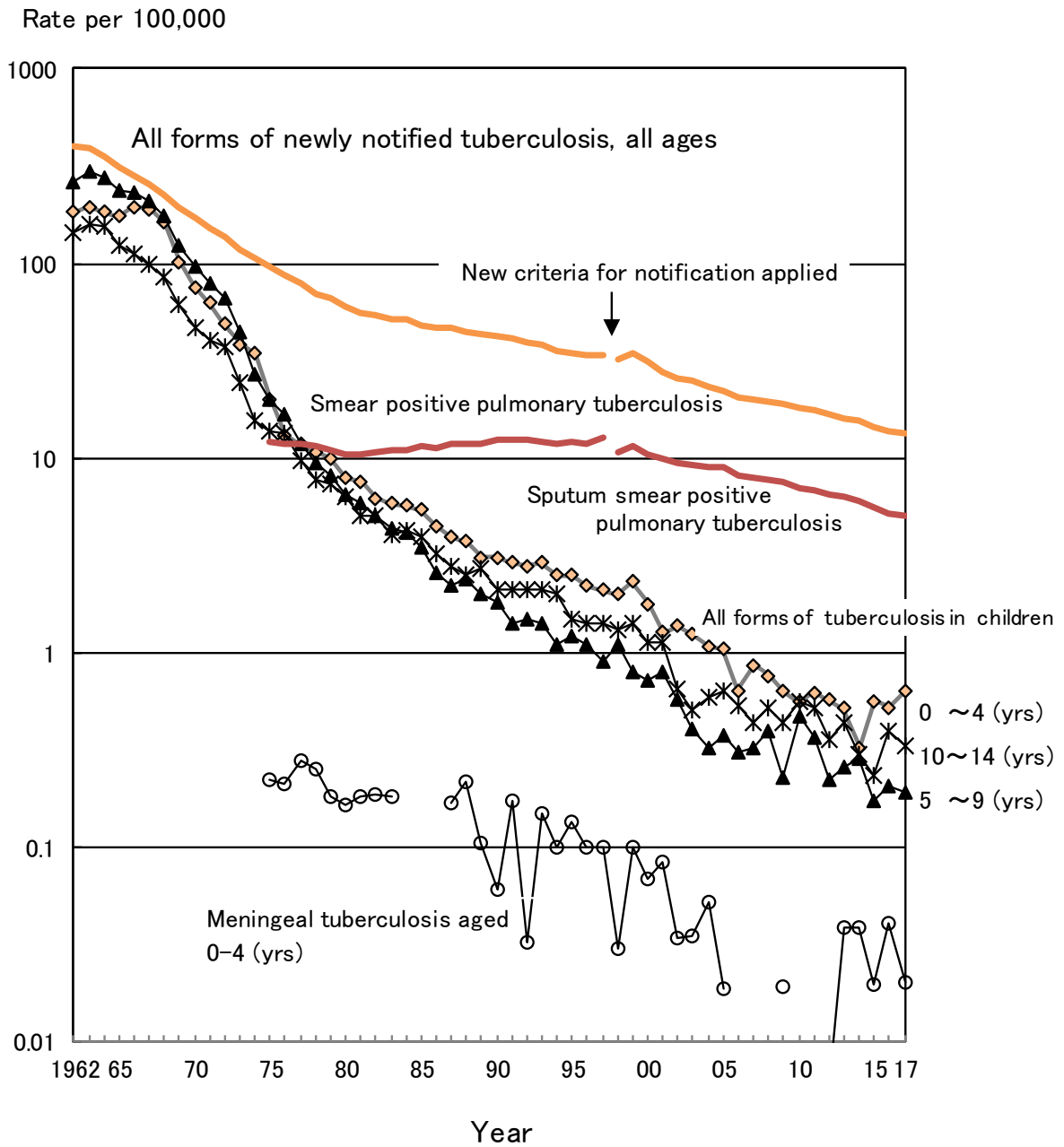


Fig. 1 Trend of childhood tuberculosis notification rates, per 100,000 population, 1962–2017

Table 2 Number of newly notified childhood tuberculosis patients by age and mode of detection, 2017

	Age (yrs)															Total
	0	1	2	3	4	5	6	7	8	9	10	11	12	13	14	
School mass-investigation	0	0	0	0	0	0	0	0	0	1	0	1	0	1	0	3
Family contact investigation	3	5	3	1	5	2	2	1	0	1	2	1	0	0	2	28
Other contact investigation	0	0	0	1	0	1	0	1	0	0	0	2	0	0	0	5
At clinics/hospitals (with symptoms)	9	1	3	0	0	0	0	0	0	0	0	0	2	3	3	21
Others	0	0	0	0	0	0	0	0	0	1	0	0	0	1	0	2
<b>Total</b>	<b>12</b>	<b>6</b>	<b>6</b>	<b>2</b>	<b>5</b>	<b>3</b>	<b>2</b>	<b>2</b>		<b>3</b>	<b>2</b>	<b>4</b>	<b>2</b>	<b>5</b>	<b>5</b>	<b>59</b>

Table 3 Proportion of BCG vaccinated cases among newly notified childhood tuberculosis patients and LTBI cases, 2017

	Age in years										5-9	10-14	Total
	Age in months					0-4							
	0-2	3-5	6-8	9-11	0	1	2	3	4	Total			
Tuberculosis cases	1	1	9	1	12	6	6	2	5	31	10	18	59
BCG vaccinated	0	0	3	1	4	2	3	2	3	14	3	6	23
BCG not vaccinated	1	1	2	0	4	0	0	0	0	4	1	0	5
BCG unknown	0	0	4	0	4	4	3	0	2	13	6	12	31
<b>BCG vaccinated (%)*</b>	<b>0.0</b>	<b>0.0</b>	<b>60.0</b>	<b>100.0</b>	<b>50.0</b>	<b>100.0</b>	<b>100.0</b>	<b>100.0</b>	<b>100.0</b>	<b>77.8</b>	<b>75.0</b>	<b>100.0</b>	<b>82.1</b>
LTBI	22	52	166	36	276	43	47	34	39	439	119	73	631
BCG vaccinated	0	21	116	20	157	30	35	20	27	269	70	26	365
BCG not vaccinated	16	11	6	0	33	3	1	1	0	38	2	3	43
BCG unknown	6	20	44	16	86	10	11	13	12	132	47	44	223
<b>BCG vaccinated (%)*</b>	<b>0.0</b>	<b>65.6</b>	<b>95.1</b>	<b>100.0</b>	<b>82.6</b>	<b>90.9</b>	<b>97.2</b>	<b>95.2</b>	<b>100.0</b>	<b>87.6</b>	<b>97.2</b>	<b>89.7</b>	<b>89.5</b>

LTBI : Latent Tuberculosis Infection

\*%: Proportion of BCG vaccinated cases among all TB/LTBI cases excluding BCG unknown

Previous table Trend of newly notified childhood TB patients by age and calendar year, 1998–2017

Year	Age (yrs)															Total
	0	1	2	3	4	5	6	7	8	9	10	11	12	13	14	
1998	31	39	15	18	16	12	18	14	13	10	7	7	29	18	27	274
1999	43	35	24	23	9	10	15	8	7	10	8	9	27	27	25	280
2000	29	27	19	14	14	8	10	13	5	7	14	11	21	12	16	220
2001	27	18	14	9	7	4	14	11	11	8	8	4	23	18	19	195
2002	30	21	14	12	3	9	8	5	6	6	2	3	14	15	7	155
2003	23	15	17	5	12	9	5	4	1	5	4	3	4	10	10	127
2004	20	18	9	5	10	5	2	3	5	4	3	4	12	6	11	117
2005	23	11	5	13	4	4	3	7	5	3	6	5	7	13	8	117
2006	9	6	8	6	6	6	3	3	2	4	3	4	3	13	9	85
2007	21	5	7	12	2	6	5	2	4	2	2	4	4	7	9	92
2008	11	14	11	4	1	2	6	2	5	8	2	5	7	8	9	95
2009	15	8	6	3	2	4	4	1	3	1	6	1	5	8	6	73
2010	10	6	5	5	4	6	6	8	3	3	5	4	4	7	13	89
2011	5	7	6	7	8	3	7	3	3	4	6	4	5	5	11	84
2012	8	6	6	7	3	2	2	3	1	4	3	2	3	7	6	63
2013	7	4	5	4	7	3	3	2	1	5	3	4	7	3	8	66
2014	5	8	–	2	2	1	6	1	3	4	–	3	3	7	4	49
2015	13	5	5	2	4	1	–	–	6	2	–	4	4	3	2	51
2016	10	8	1	2	5	1	2	–	4	4	3	3	–	6	10	59
2017	12	6	6	2	5	3	2	2	–	3	2	4	2	5	5	59

School mass-examination was revised in 2003.

Upper-limitation age of BCG vaccination was changed from 4 years to 6 months, with introduction of direct vaccination policy in 2005.

Previous table Number of prefectures by number of childhood TB patients, 1980–2017

Year	Number of childhood TB patients							Total
	0	1	2~4	5~9	10~14	15~19	20+(cases)	
1980	0	0	1	6	7	4	29	47
1985	0	0	5	11	10	2	19	47
1990	0	3	13	11	8	2	10	47
1995	3	6	14	13	4	2	5	47
2000	9	8	13	10	3	1	3	47
2005	17	8	13	7	2	0	0	47
2006	19	13	8	6	1	0	0	47
2007	17	12	11	5	2	0	0	47
2008	14	12	16	4	1	0	0	47
2009	27	6	8	4	2	0	0	47
2010	15	14	14	3	0	0	1	47
2011	19	11	12	4	0	0	1	47
2012	22	11	11	3	0	0	0	47
2013	19	14	9	5	0	0	0	47
2014	22	14	9	2	0	0	0	47
2015	25	10	9	3	0	0	0	47
2016	25	10	7	5	0	0	0	47
2017	25	8	11	2	1	0	0	47

【Elderly】

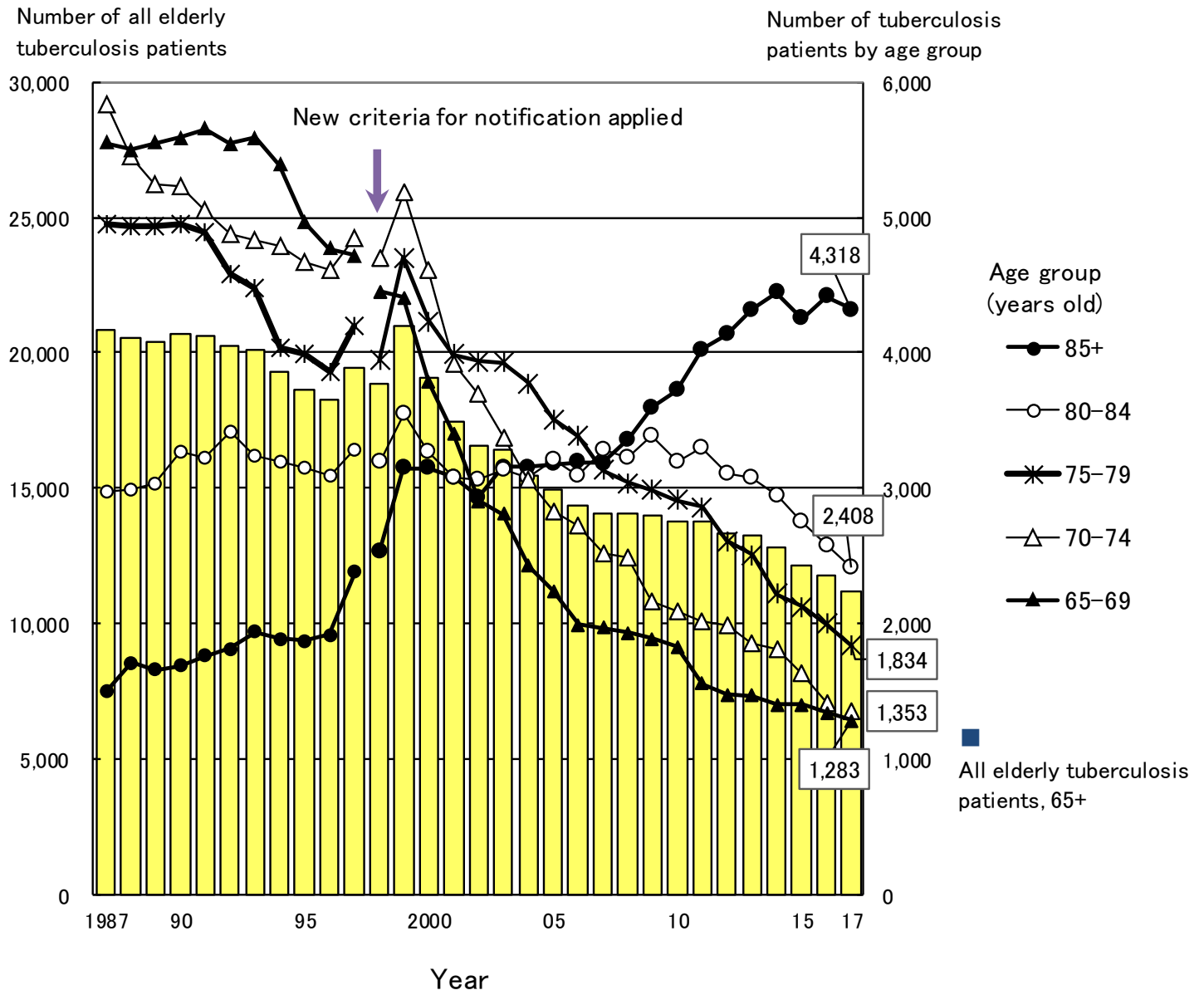


Fig.2 Annual trend of the number of newly notified elderly tuberculosis patients by age group, 1987-2017

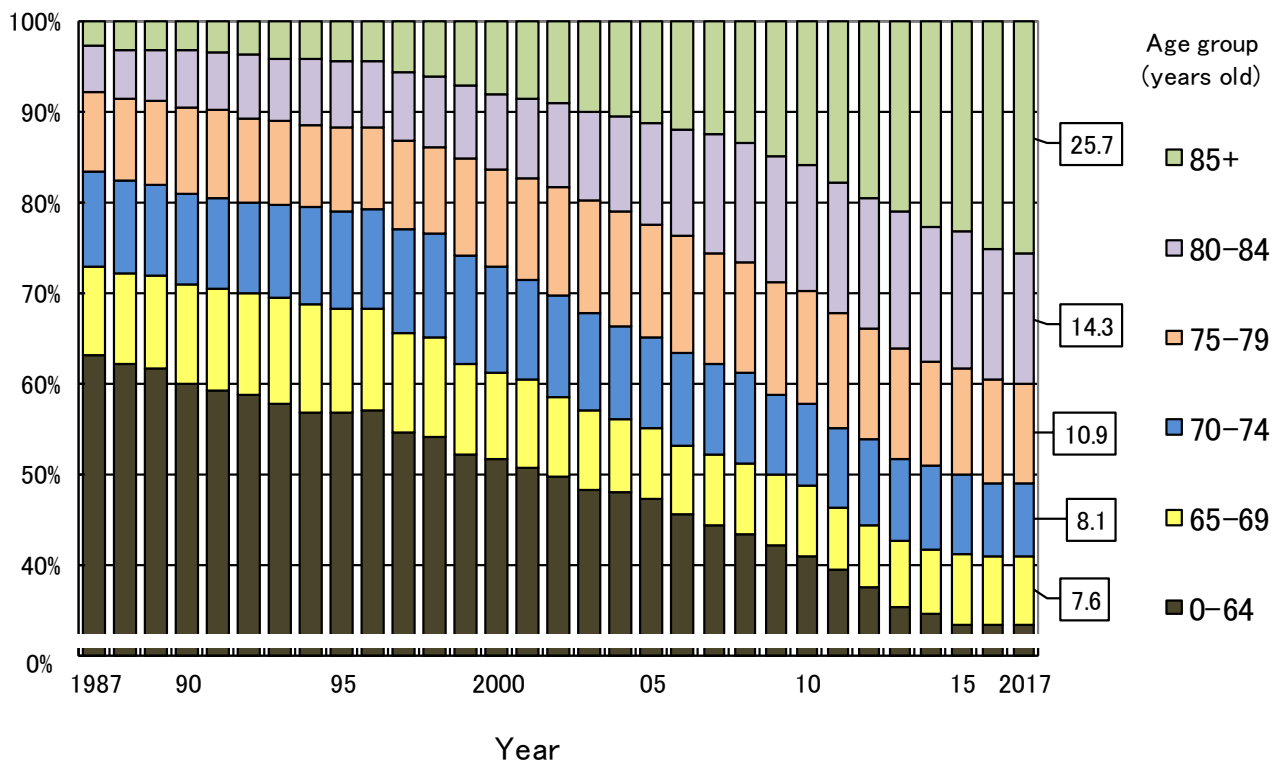


Fig.3 Annual trend of the proportion of elderly tuberculosis patients among all newly notified tuberculosis patients, 1987–2016

Rate per 100,000 population

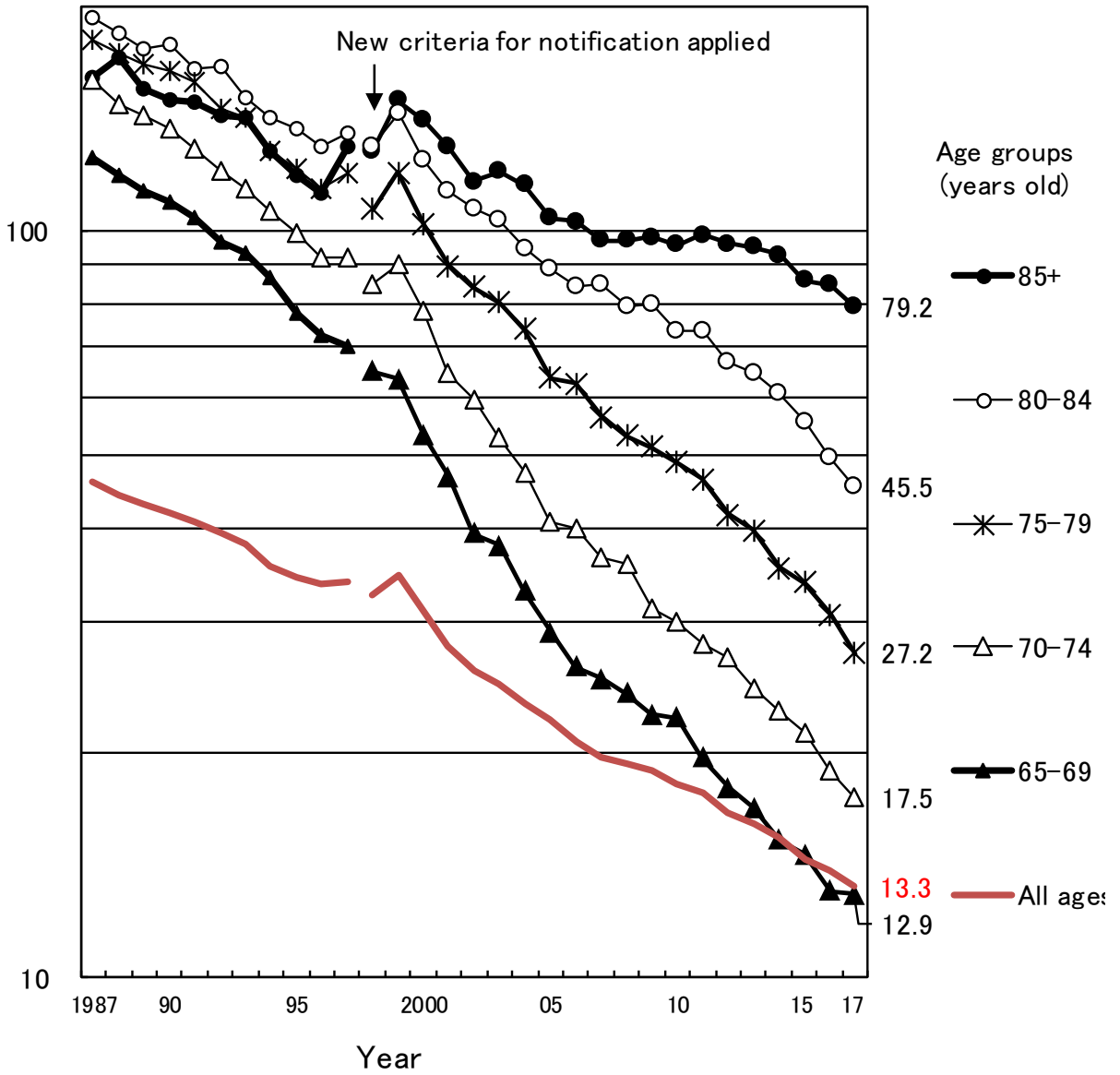


Fig.4 Annual trend of elderly tuberculosis notification rates (per 100,000 population) among the elderly population, by age group, all forms, 1987-2017

Table 4 Comparison of epidemiological indicators of newly notified tuberculosis patients by sex and age group, 2017

		Age group (years old)					
		All ages	Youth and middle-aged	The elderly			
			15-64	all 65+	65-74	75-84	85+
Number of newly notified tuberculosis patients (all forms, n)	Total	16,789	5,534	11,196	2,636	4,242	4,318
	Male	10,171	3,401	6,737	1,866	2,653	2,218
	Female	6,618	2,133	4,459	770	1,589	2,100
Tuberculosis notification rate (all forms, per 100,000 population)	Total	13.3	7.3	31.9	14.9	35.3	79.2
	Male	16.5	8.9	44.1	22.1	51.4	132.9
	Female	10.2	5.7	22.4	8.3	23.1	55.5
Number of newly notified extra-pulmonary tuberculosis patients (n)	Total	3,778	969	2,795	614	1,099	1,082
	Male	1,952	515	1,428	364	595	469
	Female	1,826	454	1,367	250	504	613
Proportion of extra-pulmonary tuberculosis patients among newly notified tuberculosis patients (%)	Total	22.5	17.5	25.0	23.3	25.9	25.1
	Male	19.2	15.1	21.2	19.5	22.4	21.1
	Female	27.6	21.3	30.7	32.5	31.7	29.2
Number of newly notified pulmonary tuberculosis patients (n)	Total	13,011	4,565	8,401	2,022	3,143	3,236
	Male	8,219	2,886	5,309	1,502	2,058	1,749
	Female	4,792	1,679	3,092	520	1,085	1,487
Proportion of pulmonary tuberculosis patients among newly notified tuberculosis patients (%)	Total	77.5	82.5	75.0	76.7	74.1	74.9
	Male	80.8	84.9	78.8	80.5	77.6	78.9
	Female	72.4	78.7	69.3	67.5	68.3	70.8
Proportion of bacteriologically positive tuberculosis patients among all pulmonary tuberculosis patients (%)	Total	86.3	77.9	91.2	85.7	91.0	94.7
	Male	86.9	79.5	91.2	87.0	91.4	94.6
	Female	85.3	75.2	91.1	81.7	90.3	95.0
Proportion of sputum-smear positive pulmonary tuberculosis patients among all pulmonary tuberculosis patients (%)	Total	48.9	38.8	54.5	48.6	54.8	58.0
	Male	49.9	41.1	55.0	51.7	56.4	56.1
	Female	47.0	35.0	53.8	39.8	51.8	60.2
Proportion of cavitary pulmonary tuberculosis patients among all pulmonary tuberculosis patients (%)	Total	29.4	32.0	28.1	33.0	28.5	24.7
	Male	32.2	35.8	30.5	35.5	30.5	26.1
	Female	24.6	25.6	24.1	26.0	24.8	23.0
Proportion of far-advanced cavitary pulmonary tuberculosis patients among all pulmonary tuberculosis patients (%)	Total	2.0	2.8	1.7	2.6	1.3	1.4
	Male	2.5	3.7	1.9	2.9	1.5	1.4
	Female	1.3	1.2	1.3	1.5	0.9	1.5
Proportion of symptomatic pulmonary tuberculosis patients upon diagnosis among all pulmonary tuberculosis (%)	Total	72.6	59.9	79.7	70.4	78.9	86.2
	Male	72.9	61.6	79.3	72.1	78.9	85.9
	Female	72.1	57.1	80.4	65.4	79.0	86.7
Proportion of pulmonary tuberculosis patients with only symptoms other than respiratory symptoms among symptomatic pulmonary tuberculosis patients (%)	Total	24.2	19.2	26.3	21.2	26.1	29.0
	Male	22.6	19.6	23.9	21.1	24.4	25.5
	Female	26.9	18.3	30.2	21.5	29.4	33.0
Proportion of patient delay of two months or more among symptomatic pulmonary tuberculosis patients (%)*	Total	20.8	28.4	17.8	23.7	18.3	14.1
	Male	21.2	29.9	17.6	23.1	18.5	12.3
	Female	20.2	25.6	18.1	25.6	17.9	16.1
Proportion of doctor delay of one month or more among symptomatic pulmonary tuberculosis patients (%)*	Total	21.7	20.0	22.5	23.8	24.2	20.3
	Male	20.8	17.5	22.3	22.5	23.5	20.9
	Female	23.3	24.5	22.9	27.9	25.5	19.6
Proportion of total delay of three months or more among symptomatic pulmonary tuberculosis patients (%)*	Total	21.2	29.7	17.7	24.3	18.1	13.9
	Male	20.8	29.1	17.4	23.5	17.7	12.4
	Female	21.9	30.7	18.4	26.8	18.7	15.7
Proportion of tuberculosis patients detected as out-patient for other diseases among newly notified tuberculosis patients (%)	Total	11.3	5.9	14.0	18.1	15.9	9.7
	Male	12.1	5.8	15.3	17.9	16.9	11.1
	Female	10.2	6.2	12.1	18.4	14.2	8.2
Proportion of tuberculosis patients detected as in-patient for other diseases among newly notified tuberculosis patients (%)	Total	15.1	4.2	20.5	14.4	20.3	24.4
	Male	14.9	4.9	20.1	14.9	20.1	24.3
	Female	15.3	3.0	21.2	13.1	20.8	24.5

Subjects: \* Excluding the patients of unknown delays



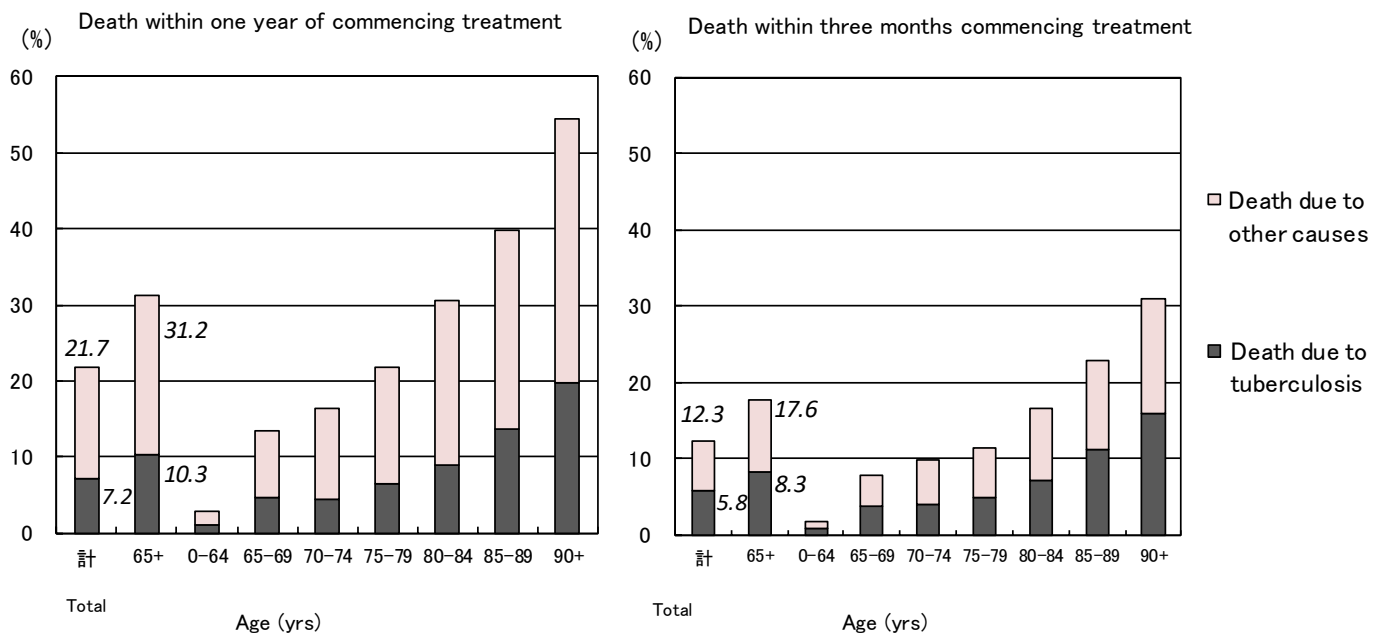


Fig.5 Proportion of death among newly notified tuberculosis patients in 2016 by age group, cause of death and duration till death

\* The date when tuberculosis diagnosis was made was used as the date treatment was commenced for those who died before the start of treatment.

Previous table Number and proportion of elderly TB by prefecture and city, 2017

65+ (yrs)			85+ (yrs)		
Area	<i>n</i>	%	地域 Area	<i>n</i>	%
Japan	11,196	66.7	Japan	4,318	25.7
Tottori	63	84.0	Tottori	38	50.7
Nagasaki	188	82.8	Kumamoto	72	45.9
Yamagata	67	82.7	Kumamoto city	37	45.1
Akita	66	82.5	Miyazaki	53	44.2
Saga	84	82.4	Saga	44	43.1
Kyouto	142	81.1	Oita	63	42.9
Kouchi	75	79.8	Ishikawa	55	39.9
Shimane	58	79.5	Tokushima	47	39.8
Oita	116	78.9	Yamagata	32	39.5
Nara	134	78.4	Niigata	44	38.9
Kumamoto	123	78.3	Yamaguchi	66	38.6
Miyazaki	94	78.3	Kouchi	36	38.3
Ehime	115	78.2	Shizuoka city	36	37.5
Shizuoka city	75	78.1	Nagano	61	36.3
Kitakyushu	160	78.0	Hiroshima	75	35.4
.	.	.	.	.	.
Saita city	104	59.8	Fukuoka city	38	19.9
Sendai	57	58.2	Kawasaki city	39	18.0
Saitama	437	57.7	Tokyo	395	17.8
Chiba	353	56.1	Osaka	157	17.8
Yokaha city	283	55.6	Yokaha city	88	17.3
Kawasaki city	116	53.5	Tokyo 23wards	279	16.6
Chiba city	68	53.1	Saitama	125	16.5
Tokyo	1,162	52.5	Chiba city	21	16.4
Tokyo 23wards	856	51.0	Chiba	94	14.9
Sagamihara city	27	38.6	Sagamihara city	9	12.9

Descending order by proportion of elderly TB patients