

【Case finding】

Table1 Proportion of mode of detection among newly notified tuberculosis patients, 2007-2017

Year	Newly notified TB patients		Individual medical checkup		Mass screening								Contact examination				Medical institutions						Others		Unknown			
	n	%	n	%	Schools		Residents		Employees		Facilities		Family		Others		Outpatients with TB symptoms(*1)		Inpatients with other diseases		Outpatients with other diseases		n	%	n	%		
					n	%	n	%	n	%	n	%	n	%	n	%	n	%	n	%								
2007	25,311		537	2.1	217	0.9	636	2.5	1,931	7.6	145	0.6	355	1.4	370	1.5	16,997	67.2	2,031	8.0	1,611	6.4	340	1.3	141	0.6		
2008	24,760		639	2.6	195	0.8	486	2.0	1,877	7.6	144	0.6	325	1.3	410	1.7	15,347	62.0	2,681	10.8	2,100	8.5	316	1.3	240	1.0		
2009	24,170		611	2.5	197	0.8	550	2.3	1,749	7.2	136	0.6	324	1.3	311	1.3	14,864	61.5	2,752	11.4	2,220	9.2	301	1.2	155	0.6		
2010	23,261		507	2.2	244	1.0	544	2.3	1,618	7.0	128	0.6	313	1.3	350	1.5	13,901	59.8	2,792	12.0	2,305	9.9	333	1.4	226	1.0		
2011	22,681		470	2.1	188	0.8	497	2.2	1,531	6.8	126	0.6	354	1.6	482	2.1	13,177	58.1	2,916	12.9	2,515	11.1	330	1.5	95	0.4		
2012	21,283		409	1.9	163	0.8	498	2.3	1,424	6.7	121	0.6	315	1.5	374	1.8	12,284	57.7	2,941	13.8	2,312	10.9	357	1.7	85	0.4		
2013	20,495		413	2.0	172	0.8	455	2.2	1,246	6.1	89	0.4	314	1.5	333	1.6	11,978	58.4	2,745	13.4	2,306	11.3	336	1.6	108	0.5		
2014	19,615		344	1.8	201	1.0	404	2.1	1,221	6.2	92	0.5	303	1.5	333	1.7	11,441	58.3	2,591	13.2	2,210	11.3	328	1.7	147	0.7		
2015	18,280		319	1.7	192	1.1	359	2.0	1,147	6.3	78	0.4	248	1.4	263	1.4	10,556	57.7	2,630	14.4	2,043	11.2	144	0.8	127	0.7		
2016	17,625		319	1.8	250	1.4	355	2.0	1,056	6.0	98	0.6	211	1.2	409	2.3	10,073	57.2	2,471	14.0	1,971	11.2	146	0.8	98	0.6		
2017	16,789		331	2.0	259	1.5	336	2.0	1,088	6.5	70	0.4	256	1.5	323	1.9	9,338	55.6	2,528	15.1	1,900	11.3	150	0.9	73	0.4		
2017																												
Age group																												
0~9	41		1	2.4	1	2.4	0	0.0	0	0.0	0	0.0	23	56.1	3	7.3	11	26.8	2	4.9	0	0.0	0	0.0	0	0.0	0	0.0
10~19	166		9	5.4	45	27.1	0	0.0	9	5.4	0	0.0	24	14.5	10	6.0	61	36.7	1	0.6	2	1.2	1	0.6	1	0.6	1	0.6
20~29	1,231		36	2.9	191	15.5	1	0.1	233	18.9	1	0.1	19	1.5	76	6.2	595	48.3	17	1.4	13	1.1	9	0.7	5	0.4	5	0.4
30~39	987		30	3.0	18	1.8	5	0.5	209	21.2	0	0.0	24	2.4	45	4.6	575	58.3	22	2.2	34	3.4	7	0.7	4	0.4	4	0.4
40~49	1,159		46	4.0	3	0.3	22	1.9	258	22.3	6	0.5	32	2.8	44	3.8	614	53.0	35	3.0	73	6.3	7	0.6	5	0.4	5	0.4
50~59	1,268		35	2.8	0	0.0	21	1.7	214	16.9	9	0.7	34	2.7	44	3.5	673	53.1	82	6.5	117	9.2	18	1.4	5	0.4	5	0.4
60~69	2,024		46	2.3	0	0.0	65	3.2	137	6.8	7	0.3	41	2.0	39	1.9	1,087	53.7	241	11.9	306	15.1	29	1.4	10	0.5	10	0.5
70~79	3,187		56	1.8	0	0.0	111	3.5	27	0.8	10	0.3	29	0.9	26	0.8	1,730	54.3	569	17.9	565	17.7	36	1.1	14	0.4	14	0.4
80~89	4,822		51	1.1	1	0.0	94	1.9	1	0.0	28	0.6	28	0.6	25	0.5	2,819	58.5	1,062	22.0	639	13.3	36	0.7	21	0.4	21	0.4
90~	1,904		21	1.1	0	0.0	17	0.9	0	0.0	9	0.5	2	0.1	11	0.6	1,173	61.6	497	26.1	151	7.9	7	0.4	8	0.4	8	0.4

TB: tuberculosis

TB symptoms: Respiratory symptoms such as cough, sputum expectoration, bloody sputum, and hemoptysis; and other symptoms such as wheezing, chest pain, back pain, dyspnea, fever, night sweating, fatigue tendency, and weight

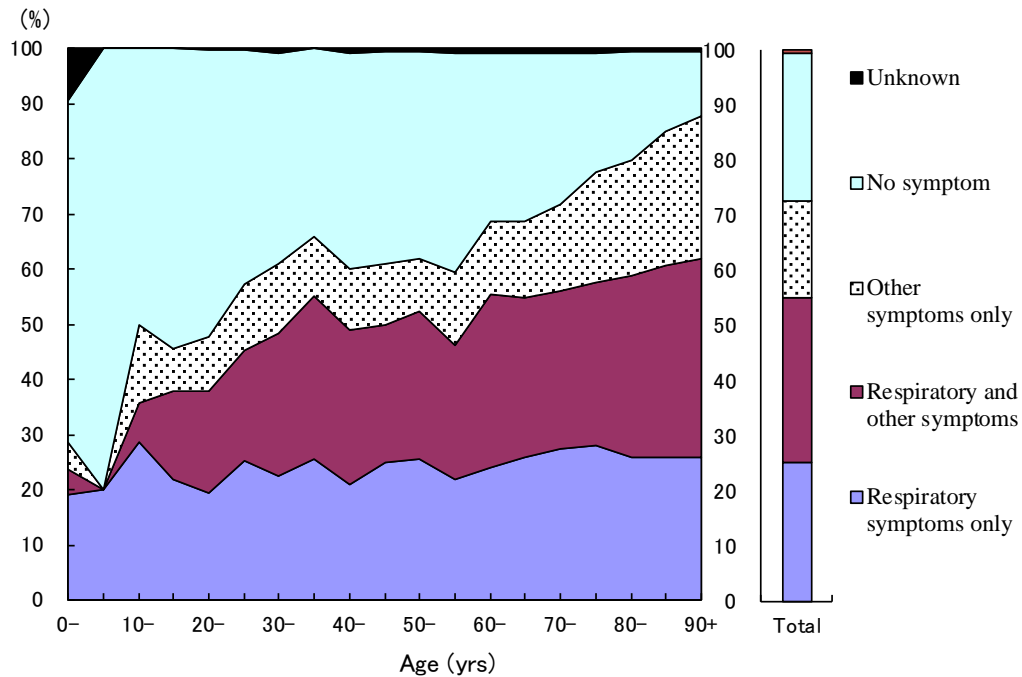


Fig.1 Proportion of symptoms among newly notified pulmonary tuberculosis patients by 5- years age group, in 2017

Respiratory symptoms include cough, sputum expectoration, bloody sputum, and hemoptysis. Other symptoms include wheezing, chest pain, back pain, dyspnea, fever, night sweating, fatigue tendency, and weight loss.

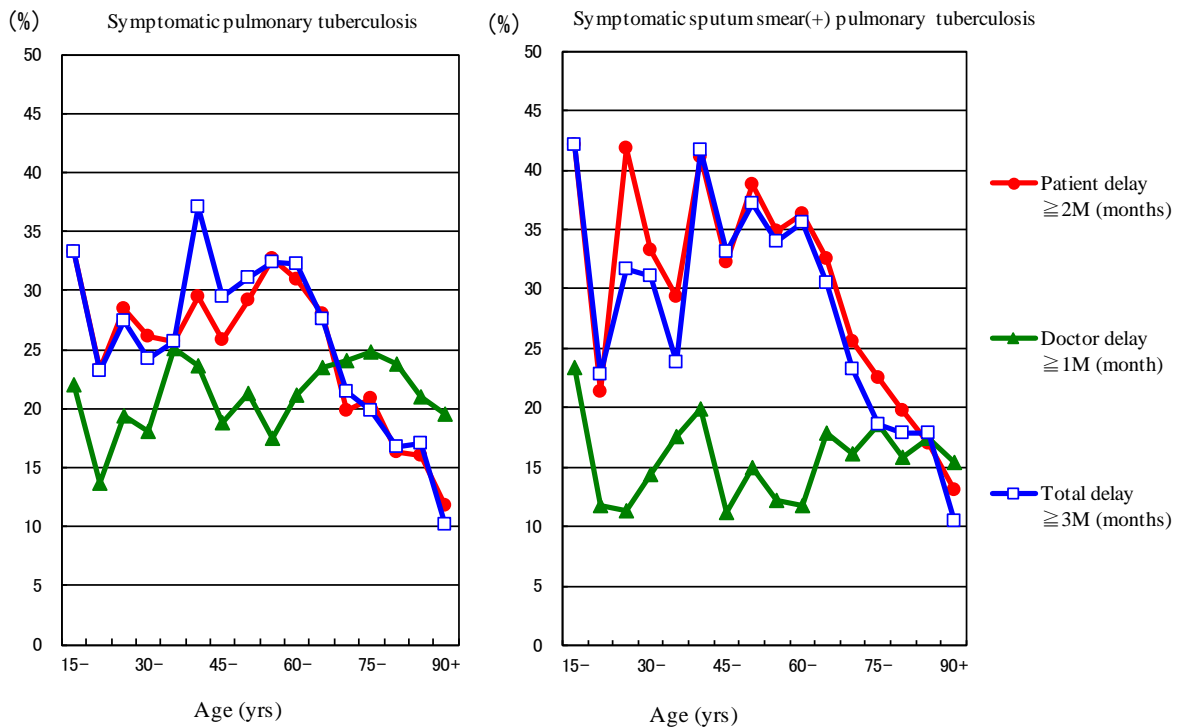


Fig.2 Proportion of patient delay, doctor delay and total delay among symptomatic pulmonary tuberculosis patients by 5-year age group, in 2017

Patient delay: time interval from the onset of symptoms to the first visit to a medical institution of 2 months or longer

Doctor delay: time interval from the first visit to a medical institution to the diagnosis of tuberculosis of 1 month or longer

Total delay: time interval from the onset of symptoms to the diagnosis of tuberculosis is 3 months or longer

Previous table Proportion of mode of detection among newly notified TB patients by age group, 2017

Age groups	Newly notified TB patients	Individual medical checkup	Mass screening				Contact examination		Medical institutions				Others	Unknown
			Schools	Residents	Employees	Facilities	Family	Others	Outpatients with TB symptoms (*1)	Inpatients with other diseases	Outpatients with other diseases			
	<i>n</i>	%	%	%	%	%	%	%	%	%	%	%	%	
All forms of TB														
Total	16,789	2.0	1.5	2.0	6.5	0.4	1.5	1.9	55.6	15.1	11.3	0.9	0.4	
0-14	59	3.4	5.1	0.0	0.0	0.0	47.5	8.5	30.5	3.4	1.7	1.7	1.7	
15-19	148	5.4	29.1	0.7	0.0	0.0	12.8	5.4	36.5	0.7	0.7	3.4	2.0	
20-24	609	3.1	23.8	0.2	1.5	0.0	1.3	7.1	40.2	1.1	1.1	0.7	0.3	
25-29	622	2.7	7.4	0.0	16.7	0.2	1.8	5.3	56.3	1.6	1.0	0.8	0.3	
30-34	505	3.2	3.0	0.2	25.5	0.0	1.8	5.3	56.4	2.4	3.8	0.4	0.4	
35-39	482	2.9	0.6	0.8	22.0	0.0	3.1	3.7	60.2	2.1	3.1	0.8	0.4	
40-44	525	3.0	0.6	2.5	19.6	0.0	2.9	3.8	53.5	3.0	4.8	0.6	0.6	
45-49	634	4.7	0.0	1.4	20.0	0.9	2.7	3.8	52.5	3.0	7.6	0.9	0.2	
50-54	612	2.8	0.0	1.5	21.4	0.7	2.3	3.8	53.4	6.7	6.9	2.0	0.7	
55-59	656	2.7	0.0	1.8	18.3	0.8	3.0	3.2	52.7	6.3	11.4	1.5	0.6	
60-64	741	2.4	0.0	2.3	12.7	0.5	2.6	2.7	54.3	9.9	12.3	2.6	0.8	
65-69	1,283	2.2	0.0	3.7	5.9	0.2	1.7	1.5	53.4	13.1	16.8	1.1	0.5	
70-74	1,353	1.8	0.0	4.1	4.5	0.4	1.4	0.9	52.8	15.6	19.3	1.6	0.5	
75-79	1,834	1.7	0.0	3.1	1.1	0.3	0.5	0.8	55.4	19.5	16.6	1.0	0.4	
80-84	2,408	1.1	0.0	2.7	0.2	0.5	0.7	0.6	56.5	21.0	15.4	0.7	0.5	
85-89	2,414	1.0	0.0	1.2	0.0	0.7	0.4	0.4	60.4	23.1	11.1	0.0	0.0	
90+	1,904	1.1	0.0	0.9	0.0	0.5	0.1	0.6	61.6	26.1	7.9	0.4	0.4	
(Re-count) Sputum smear positive pulmonary TB														
Total	6,359	1.3	0.7	1.6	4.2	0.4	0.6	0.6	63.6	15.4	10.0	0.6	0.3	
0-14	4	0.0	0.0	0.0	0.0	0.0	25.0	0.0	50.0	25.0	0.0	0.0	0.0	
15-19	40	2.5	32.5	0.0	5.0	0.0	5.0	0.0	47.5	2.5	2.5	0.0	0.0	
20-24	137	2.9	18.2	0.0	19.0	0.0	1.5	1.5	54.0	0.7	1.5	0.0	0.0	
25-29	152	2.0	2.0	0.0	11.2	0.0	1.3	1.3	79.6	0.7	1.3	0.0	0.0	
30-34	137	1.5	0.7	0.0	15.3	0.0	0.7	0.7	73.0	1.5	4.4	0.7	0.0	
35-39	168	2.4	0.0	0.0	13.7	0.0	1.8	1.2	72.6	3.6	3.0	0.6	0.6	
40-44	161	0.6	0.6	1.9	19.3	0.0	0.6	0.6	68.9	0.6	3.7	1.9	0.6	
45-49	210	3.3	0.0	1.9	18.6	0.5	1.4	1.9	64.8	1.9	3.8	0.5	0.5	
50-54	213	2.8	0.0	1.4	13.6	0.9	1.9	1.4	61.0	8.5	5.2	1.9	0.0	
55-59	236	1.3	0.0	1.7	12.7	0.8	0.8	0.4	65.7	3.0	9.3	1.7	0.8	
60-64	319	1.6	0.0	1.3	7.5	0.6	1.6	1.3	64.6	8.8	10.3	1.3	0.3	
65-69	485	2.1	0.0	2.7	3.7	0.2	0.8	0.6	60.6	14.0	12.2	2.1	0.2	
70-74	498	1.2	0.0	2.4	1.4	0.4	0.4	0.4	60.6	15.7	15.9	0.2	0.6	
75-79	740	1.4	0.0	2.4	0.4	0.4	0.0	0.3	61.2	20.3	12.7	0.5	0.3	
80-84	983	0.7	0.0	2.2	0.0	0.2	0.2	0.3	62.3	19.7	13.5	0.2	0.3	
85-89	1,012	0.7	0.1	1.0	0.0	0.6	0.1	0.4	64.4	21.0	10.9	0.2	0.2	
90+	864	1.0	0.0	1.0	0.0	0.7	0.0	0.3	64.6	24.2	7.3	0.2	0.5	

TB: tuberculosis

*1 :TB symptoms: Respiratory symptoms such as cough, sputum expectoration, bloody sputum, and hemoptysis; and other symptoms such as wheezing, chest pain, back pain, dyspnea, fever, night sweating, fatigue tendency, and weight loss.

Previous table Number of newly notified TB patients by occupation, sex and age group, 2017

Sex/Age group	Total	Service workers	Nurses/ Public health nurses	Medical doctors	Other medical workers	Teacher s/Nursery nurses	Pupils/Students	Other regular workers	Other temporary/daily workers	Other self-employed	Housekeepers	Infants/Little children	Jobless/ Others	Unknown
Male	10,171	237	16	33	81	34	366	1,801	326	536	9	20	6,450	262
0-14	33	-	-	-	-	-	11	-	-	-	-	20	2	-
15-19	96	1	-	-	1	-	80	4	3	-	1	-	6	-
20-24	343	13	3	-	6	-	174	96	20	3	-	-	17	11
25-29	334	19	2	4	7	2	72	165	23	2	-	-	31	7
30-39	514	41	5	5	25	6	25	266	20	40	-	-	60	21
40-49	709	27	4	4	17	9	2	407	39	58	-	-	121	21
50-59	877	38	1	6	12	13	1	437	50	92	1	-	195	31
60-69	1,451	56	1	4	9	3	1	332	100	119	-	-	763	63
70-79	2,119	34	-	5	3	-	0	78	60	136	1	-	1,748	54
80+	3,695	8	-	5	1	1	0	16	11	86	6	-	3,507	54
Female	6,618	200	200	5	199	48	241	554	194	95	227	11	4,497	147
0-14	26	-	-	-	-	-	13	-	-	-	-	11	2	-
15-19	52	4	-	-	2	-	39	2	-	-	1	-	3	1
20-24	266	17	18	-	10	6	117	63	7	1	1	-	16	10
25-29	288	30	23	-	16	4	47	91	19	2	6	-	39	11
30-39	473	50	54	1	39	10	22	127	44	8	31	-	74	13
40-49	450	39	50	2	49	12	2	117	40	11	35	-	69	24
50-59	391	25	42	1	49	10	0	84	24	18	33	-	83	22
60-69	573	22	13	-	25	6	0	57	37	19	42	-	338	14
70-79	1,068	11	-	1	8	-	1	10	20	28	48	-	921	20
80+	3,031	2	-	-	1	-	0	3	3	8	30	-	2,952	32

Previous table Proportion of mode of detection among newly notified pulmonary TB patients aged 20-59 years by occupation, 2017

	Pulmonary TB patients	Individual medical checkup	Mass screening				Contact examination		Clinics/Hospitals			Others/Unknown
			Resident s	Employe es	Schools/ Facilities	Family	Others	Outpatient s with TB symptoms (*2)	Inpatient s with other diseases	Outpatient s with other diseases		
	<i>n</i>	%	%	%	%	%	%	%	%	%	%	
Total	3,919	3.5	1.2	23.3	5.8	2.7	5.2	47.4	3.0	4.7	3.3	
Service workers	264	3.6	1.2	22.7	0.8	2.4	3.6	58.3	2.4	3.2	1.6	
Medical workers(*1)	321	2.1	0.0	35.9	0.8	1.9	15.5	38.1	1.9	1.6	2.1	
Teachers/ Nursery nurses	45	5.8	0.0	46.2	0.0	1.9	1.9	36.5	0.0	5.8	1.9	
Students	406	3.6	0.0	1.8	50.1	0.8	7.4	28.2	0.5	0.5	7.1	
Other regular workers	1,571	3.1	0.8	37.3	0.5	2.7	4.2	42.3	2.1	5.1	1.8	
Other temporary/ daily workers	295	2.2	1.3	19.9	0.0	4.8	3.5	59.7	3.5	3.0	2.2	
Other self-employed	151	4.7	2.6	6.8	0.5	3.7	1.6	61.1	3.7	10.5	4.7	
Housekeepers	103	7.1	9.5	4.8	0.0	4.8	1.2	57.1	6.0	8.3	1.2	
Jobless/ Others	648	4.0	2.4	0.6	1.8	3.8	3.0	62.8	7.9	8.1	5.5	
Unknown	115	5.9	0.5	13.6	0.9	1.8	3.6	59.5	3.6	4.1	6.4	

*1 Medical workers include nurses, public health nurses, medical doctors and dentists, physical therapists, occupational therapists, medical technologists, radiographers, and co-medicals.

*2 TB symptoms: Respiratory symptoms such as cough, sputum expectoration, bloody sputum, and hemoptysis; and other symptoms such as wheezing, chest pain, back pain, dyspnea, fever, night sweating, fatigue tendency, and weight loss.

【Tuberculosis Characteristics upon Diagnosis】

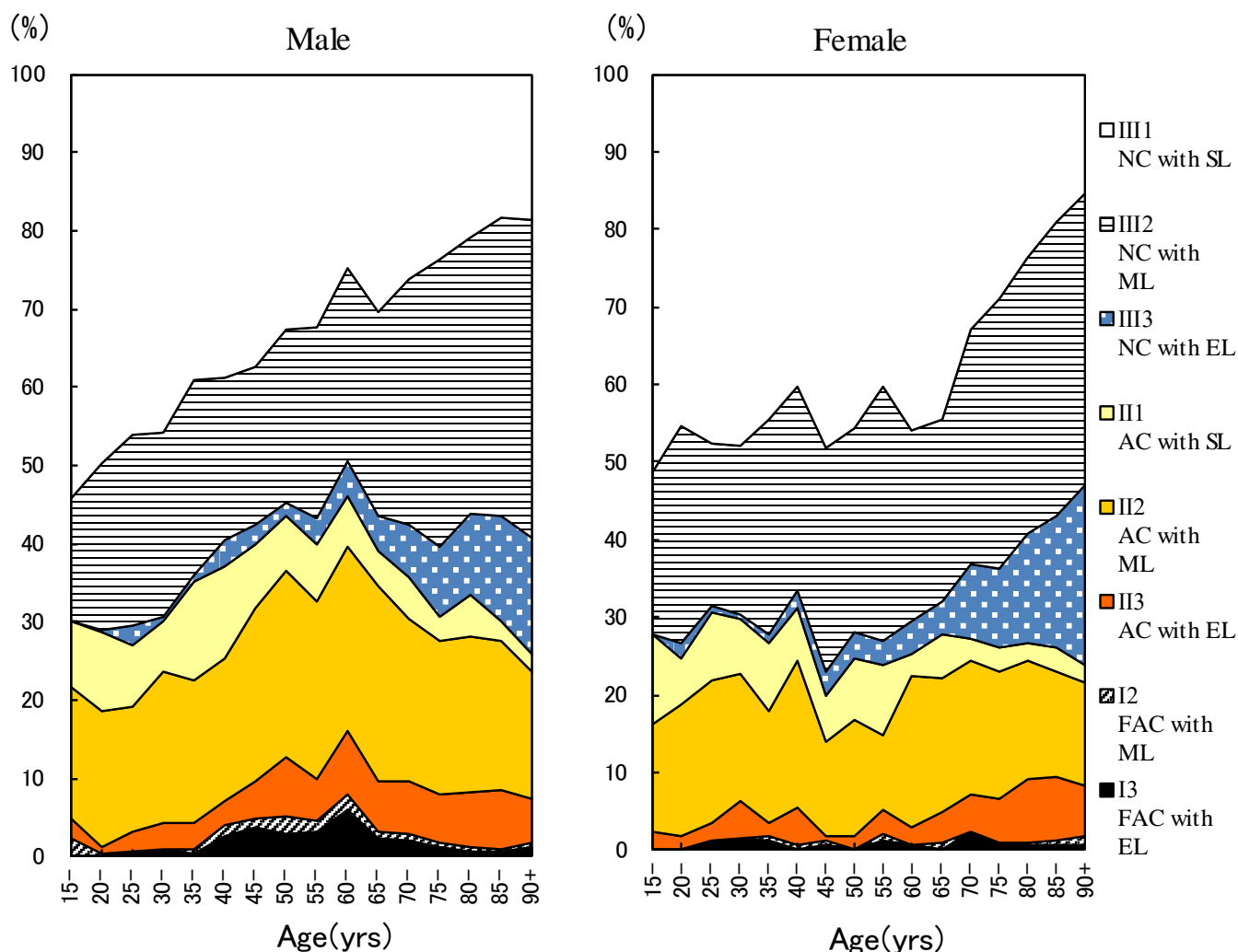


Fig.3 Proportion of cases classified by X-ray classification by sex and 5-yearage group, 2017
 NC : Non-cavitory SL : Slight lesion AC : Advanced cavitory ML : Moderate lesion
 FAC: Far-advance cavitory EL : Extensive lesion

Table 2 Number of newly notified tuberculosis patients with HIV infection, by sex and age group, 2017 and 2007–2017

Age group	Sputum smear positive		Other bacteriologically-positive		Bacteriologically-negative		Extra-pulmonary		Total	
	M	F	M	F	M	F	M	F	M	F
2017 Calendar year										
Total	6 (1)	7 (2)	6 (1)	1 (1)	1	0	9 (3)	4 (3)	22 (5)	12 (6)
0-19	0	0	0	0	0	0	0	0	0	0
20-24	1 (1)	0	0	0	0	0	0	0	1 (1)	0
25-29	0	1 (1)	1	0	0	0	2 (1)	0	3 (1)	1 (1)
30-34	0	0	1	1 (1)	0	0	2 (1)	0	3 (1)	1 (1)
35-39	0	1	0	0	0	0	0	2 (2)	0	3 (2)
40-44	1	1	0	0	0	0	0	2 (1)	1	3 (1)
45-49	0	1 (1)	2 (1)	0	1	0	0	0	3 (1)	1 (1)
50-54	0	1	1	0	0	0	3 (1)	0	4 (1)	1
55-59	0	0	1	0	0	0	1	0	2	0
60-64	2	0	0	0	0	0	0	0	2	0
65-69	0	0	0	0	0	0	1	0	1	0
70-74	1	0	0	0	0	0	0	0	1	0
75-79	0	1	0	0	0	0	0	0	0	1
80+	1	1	0	0	0	0	0	0	1	1
2007-2017 Calendar year										
Total	165 (17)	37 (18)	91 (21)	13 (9)	40 (5)	9 (7)	196 (37)	28 (15)	492 (80)	87 (49)
0-19	1 (1)	0	0	0	0	0	2	0	3 (1)	0
20-24	6 (4)	0	4 (3)	0	1 (1)	1 (1)	1	1	12 (8)	2 (1)
25-29	10 (5)	6 (5)	2 (1)	1 (1)	1 (1)	2 (2)	13 (3)	1 (1)	26 (10)	10 (9)
30-34	13 (3)	4 (4)	12 (1)	4 (3)	2	1 (1)	24 (8)	4 (2)	51 (12)	13 (10)
35-39	23 (2)	4 (3)	18 (5)	3 (3)	6	2 (2)	34 (7)	6 (5)	81 (14)	15 (13)
40-44	27 (1)	6 (4)	16 (5)	0 (0)	8 (2)	3 (1)	43 (13)	7 (5)	94 (21)	16 (10)
45-49	16 (1)	2 (2)	11 (4)	1 (1)	5 (1)	0	32 (5)	2	64 (11)	5 (3)
50-54	12	1	12 (2)	0	5	0	14 (1)	0	43 (3)	1
55-59	9	0	4	0	4	0	10	2 (2)	27	2 (2)
60-64	17	1	6	1 (1)	3	0	7	0	33	2 (1)
65-69	10	0	3	0	3	0	9	1	25	1
70-74	5	2	1	1	1	0	3	1	10	4
75-79	5	1	0	0	1	0	3	2	9	3
80+	11	10	2	2	0	0	1	1	14	13

Re-count of foreigners

HIV : Human Immunodeficiency Virus. M : male patients, F : female patients.

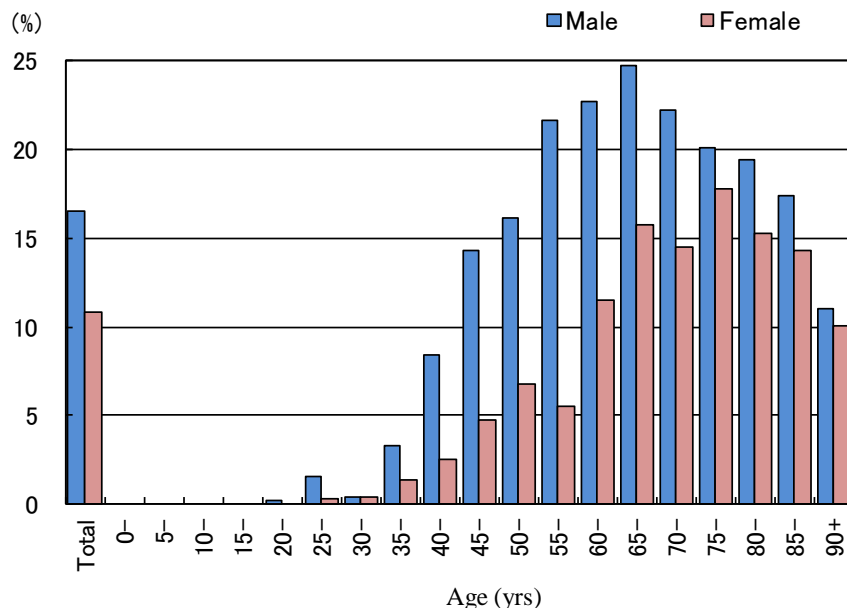


Fig.4 Proportion of newly notified tuberculosis patients with diabetes mellitus in each age-group by sex, 2016

Table 3 Drug susceptibility test results among newly notified pulmonary tuberculosis patients, by treatment history, 2012–2017

Treatment history, Culture examination results, Drug susceptibility test results	2012				2013				2014				2015				2016				2017				
	n	%	%	%	n	%	%	%	n	%	%	%	n	%	%	%	n	%	%	%	n	%	%	%	
Total																									
Pulmonary tuberculosis	16,432	100%			15,972	100%			15,149	100%			14,123	100%			13,608	100%			13,011	100%			
Culture result obtained	14,058	85.6			13,311	83.3			12,909	85.2			12,260	86.8			12,255	90.1			11,764	90.4			
Culture positive	11,261	68.5	100%		10,523	65.9	100%		10,259	67.7	100%		10,035	71.1	100%		9,878	72.6	100%		9,580	73.6	100%		
DST result obtained	8,347		74.1	100%	7,701		73.2	100%	7,645		74.5	100%	7,630		76.0	100%	7,732		78.3	100%	7,891		82.4	100%	
MDR	60			0.7	47			0.6	56			0.7	48			0.6	49			0.6	52			0.7	
Any INH resistance	380			4.6	369			4.8	349			4.6	372			4.9	369			4.8	383			4.9	
Any RFP resistance	73			0.9	64			0.8	76			1.0	77			1.0	74			1.0	80			1.0	
Any resistance*	810			9.7	757			9.8	749			9.8	767			10.1	741			9.6	853			10.8	
New treatment																									
Pulmonary tuberculosis	15,040	100%			14,727	100%			13,956	100%			13,102	100%			12,686	100%			12,174	100%			
Culture result obtained	12,882	85.7			12,279	83.4			11,897	85.2			11,394	87.0			11,435	90.1			11,018	90.5			
Culture positive	10,379	69.0	100%		9,782	66.4	100%		9,523	68.2	100%		9,379	71.6	100%		9,284	73.2	100%		9,030	74.2	100%		
DST result obtained	7,676			74.0	100%	7,166			73.3	100%	7,104			74.6	100%	7,278			78.4	100%	7,434			82.3	100%
MDR	38				0.5	31			0.4	40			0.6	33			0.5	37			0.5	41			0.6
Any INH resistance	310			4.0	326			4.5	288			4.1	317			4.4	316			4.3	338			4.5	
Any RFP resistance	46			0.6	42			0.6	58			0.8	58			0.8	56			0.8	62			0.8	
Any resistance*	712			9.3	680			9.5	664			9.3	686			9.6	659			9.1	773			10.4	
Re-treatment																									
Pulmonary tuberculosis	1,094	100%			1,013	100%			968	100%			851	100%			735	100%			660	100%			
Culture result obtained	959	87.7			852	84.1			848	87.6			732	86.0			665	90.5			605	91.7			
Culture positive	693	63.3	100%		586	57.8	100%		591	61.1	100%		534	62.7	100%		462	62.9	100%		423	64.1	100%		
DST result obtained	555			80.1	100%	435			74.2	100%	449			76.0	100%	412			77.2	100%	358			85.6	100%
MDR	22				4.0	16			3.7	15			3.3	14			3.4	12			3.4	9			2.5
Any INH resistance	67			12.1	35			8.0	57			12.7	49			11.9	51			14.2	36			9.9	
Any RFP resistance	26			4.7	22			5.1	17			3.8	18			4.4	16			4.5	15			4.1	
Any resistance*	94			16.9	65			14.9	79			17.6	72			17.5	70			19.6	65			18.0	
No information about treatment history																									
Pulmonary tuberculosis	298	100%			232	100%			225	100%			170	100%			187	100%			177	100%			
Culture result obtained	217	72.8			180	77.6			164	72.9			134	78.8			155	82.9			141	79.7			
Culture positive	189	63.4	100%		155	66.8	100%		145	64.4	100%		122	71.8	100%		132	70.6	100%		127	71.8	100%		
DST result obtained	116			61.4	100%	100			64.5	100%	92			63.4	100%	83			68.0	100%	96			74.8	100%
MDR	0				0.0	0			0.0	1			1.1	1			1.2	0			0.0	2			2.1
Any INH resistance	3			2.6	8			8.0	4			4.3	6			7.2	2			2.1	9			9.5	
Any RFP resistance	1			0.9	0			0.0	1			1.1	1			1.2	2			2.1	3			3.2	
Any resistance*	4			3.4	12			12.0	6			6.5	9			10.8	12			12.5	15			15.8	

DST: Drug susceptibility test MDR : Multi-drug resistant, i.e., resistant to at least INH and RFP INH: isoniazid RFP: rifampicin

Cases having drug resistance are counted independently by drug.

*: Resistant to either INH, RFP, SM, or EB

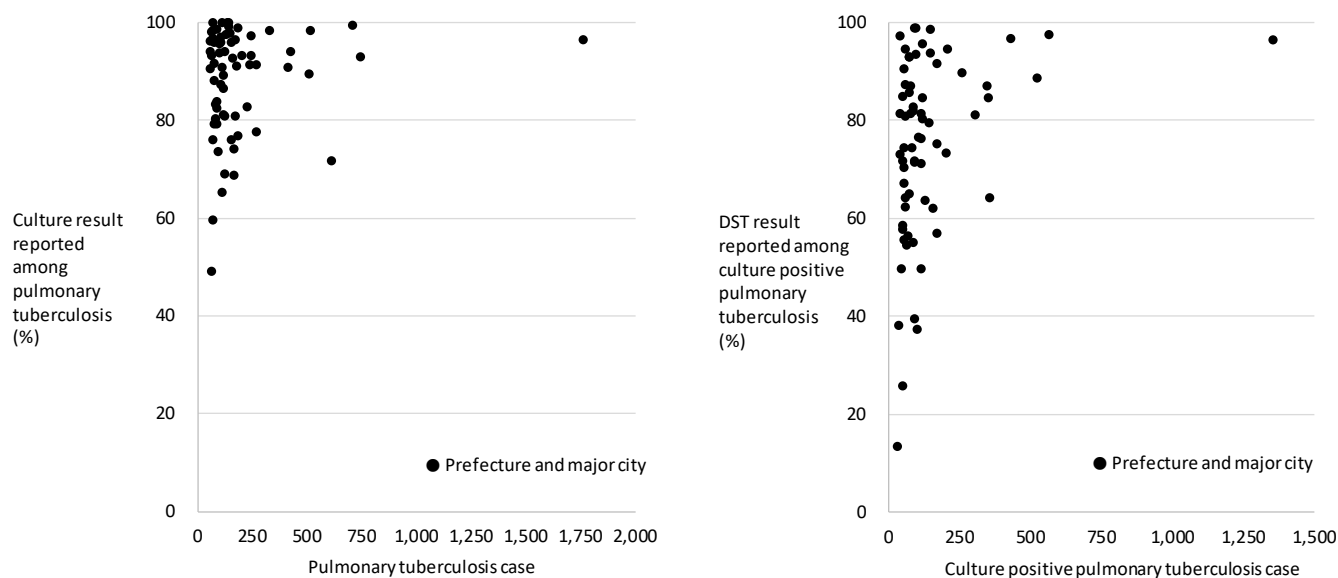
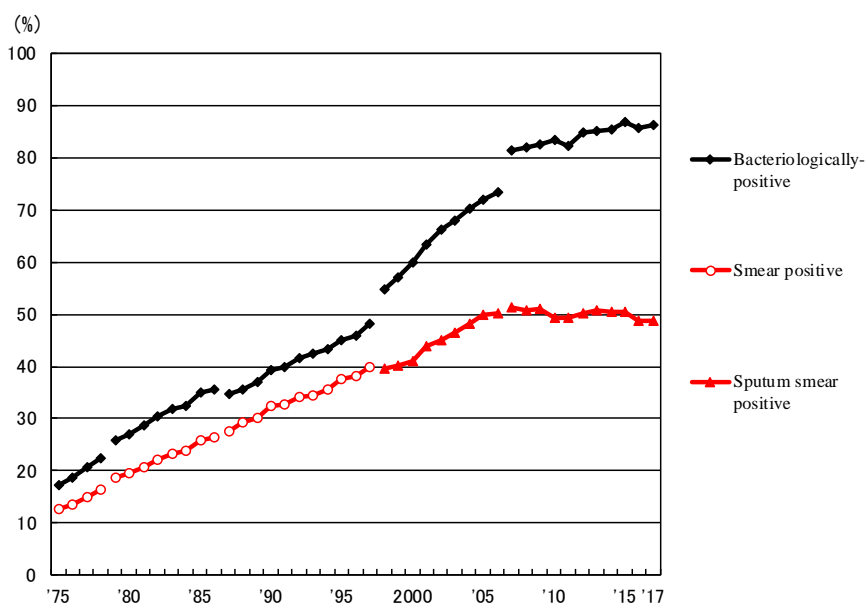


Fig. 5 Scatter plot of culture results reported among pulmonary tuberculosis patients and anti-tuberculosis drug susceptibility test results among newly notified pulmonary tuberculosis patients, by prefecture and major city, 2017



Previous Fig.
Proportion of bacteriologically confirmed cases among newly notified pulmonary tuberculosis patients, 1975-2017

Sources of information and subjects:

Annual tuberculosis reports from public health centers

1975-1978: All forms of tuberculosis

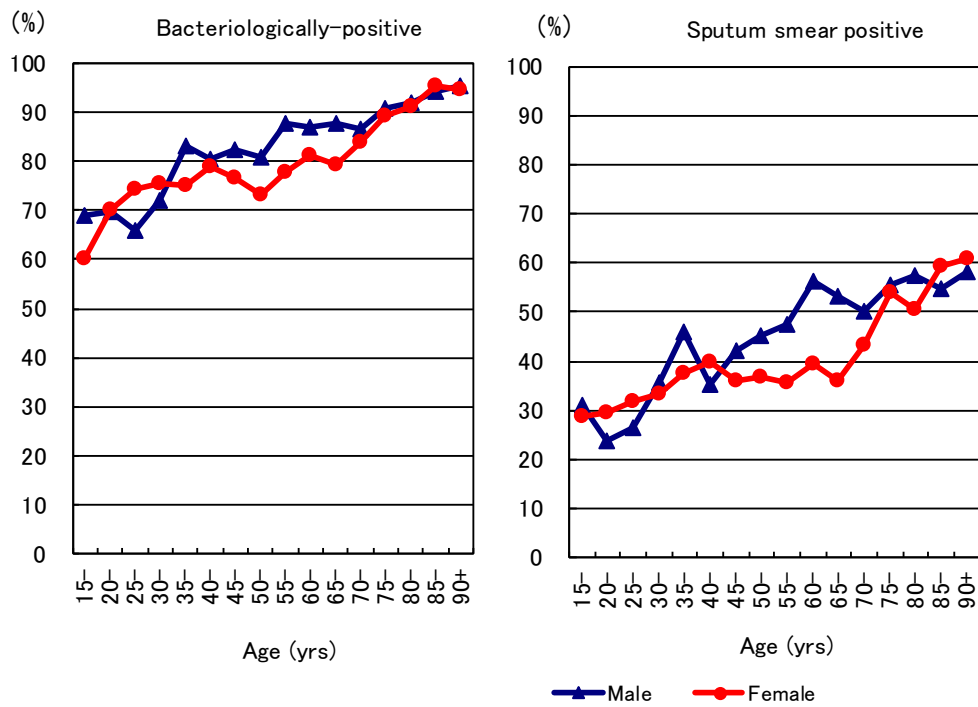
1979-1986: Pulmonary tuberculosis

Nationwide computerized tuberculosis surveillance system

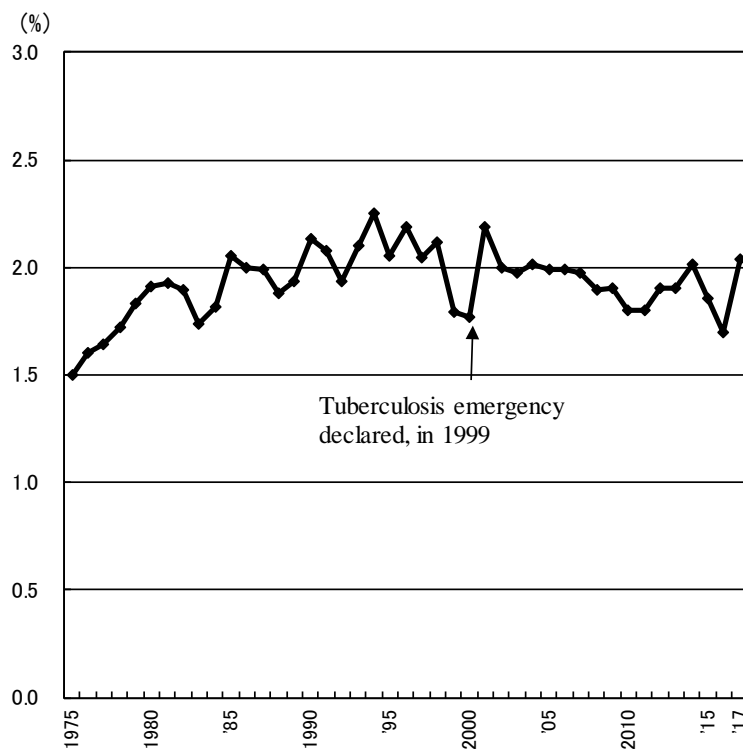
1987-1997: Pulmonary Tuberculosis

1998-2006: Pulmonary tuberculosis (New patient criteria for notification were applied)

2007-2009: Pulmonary tuberculosis (Item of nucleic acid amplification was added)



Previous Fig. Proportion of bacteriologically confirmed cases among newly notified pulmonary tuberculosis patients by sex and 5-year age group, 2017



Previous Fig. Proportion of far-advanced cavitary cases among newly notified pulmonary Tuberculosis patients, 1975-2017

Previous table Proportion of cavitary or/and sputum smear positive cases among newly notified pulmonary TB patients aged 30-59 years, 2017

	Male							Female						
	Pulmonary TB	Cavitary or sputum smear(+)			Cavitary and sputum smear(+)			Pulmonary TB	Cavitary or sputum smear(+)			Cavitary and sputum smear(+)		
		n	%	Ratio	n	%	Ratio		n	%	Ratio	n	%	Ratio
Service workers	87	51	58.6	1.4	32	36.8	1.8	91	44	48.4	1.2	21	23.1	2.4
Medical workers	72	31	43.1	1.0	15	20.8	1.0	228	93	40.8	1.0	22	9.6	1.0
Teachers/ Nursery nurses	19	6	31.6	0.7	4	21.1	1.0	23	9	39.1	1.0	4	17.4	1.8
Other regular workers	926	432	46.7	1.1	196	21.2	1.0	265	105	39.6	1.0	34	12.8	1.3
Other temporary/ daily workers	92	65	70.7	1.6	39	42.4	2.0	82	44	53.7	1.3	9	11.0	1.1
Other self-employed	158	96	60.8	1.4	60	38.0	1.8	25	10	40.0	1.0	3	12.0	1.2
Jobless	290	182	62.8	1.5	96	33.1	1.6	147	77	52.4	1.3	49	33.3	3.5
Others	120	68	56.7	1.3	31	25.8	1.2	156	71	45.5	1.1	32	20.5	2.1
Total	1,764	931	52.8		473	26.8		1,017	453	44.5		174	17.1	

Others:Houskeepers/ Students/ Unknown

Ratio: The ratio of each proportion to that of medical workers

Previous table Drug susceptibility test results among newly notified pulmonary tuberculosis patients, by sex and age group, 2017 and 2007–2017

Age group	Total										New treatment (Re-count)									
	Male					Female					Male					Female				
	DST result obtained	MDR	Any INH resistance	Any RFP resistance	*Any resistance	DST result obtained	MDR	Any INH resistance	Any RFP resistance	*Any resistance	DST result obtained	MDR	Any INH resistance	Any RFP resistance	*Any resistance	DST result obtained	MDR	Any INH resistance	Any RFP resistance	*Any resistance
2017 Calendar year																				
Total	5,042	34	261	54	584	2,849	18	122	26	269	4,711	29	231	42	528	2,723	12	107	20	245
0-19	53	3	6	3	11	27	0	3	0	6	51	2	5	2	10	27	0	3	0	6
20-29	282	7	30	10	52	260	4	23	6	52	270	6	28	8	49	250	2	21	4	48
30-39	243	6	15	10	45	201	4	15	6	33	231	4	13	8	42	197	3	14	5	31
40-49	373	4	24	8	48	205	2	8	3	17	351	4	24	5	43	197	2	8	3	15
50-59	467	2	28	3	71	145	3	10	4	19	442	2	28	3	68	134	1	8	2	16
60-69	769	3	37	5	87	229	1	9	1	22	724	2	31	4	78	215	1	8	1	20
70-79	1,045	4	55	8	134	453	1	17	1	41	983	4	49	6	121	439	1	15	1	39
80+	1,810	5	66	7	136	1,329	3	37	5	79	1,659	5	53	6	117	1,264	2	30	4	70
2007-2017 Calendar year																				
Total	51,646	387	2,622	555	6,070	27,151	207	1,199	286	2,713	46,952	252	2,152	368	5,285	25,533	129	986	192	2,391
0-19	394	10	38	10	74	328	2	29	3	67	377	7	35	7	71	312	2	27	3	62
20-29	2,628	55	203	70	456	2,258	55	180	74	385	2,516	42	180	54	426	2,160	39	159	54	353
30-39	3,086	25	200	40	476	2,346	32	156	45	338	2,921	19	187	34	448	2,254	25	140	34	310
40-49	4,100	36	224	55	563	2,000	20	99	30	248	3,843	26	201	37	506	1,901	12	87	21	226
50-59	5,766	51	322	81	835	1,641	22	79	30	186	5,351	32	281	52	752	1,547	9	60	16	162
60-69	8,994	60	481	101	1,184	2,433	13	115	18	288	8,237	40	398	66	1,028	2,286	7	91	11	250
70-79	11,251	85	586	113	1,349	4,856	25	200	33	478	10,074	45	443	63	1,131	4,495	11	161	16	417
80+	15,427	65	568	85	1,133	11,289	38	341	53	723	13,633	41	427	55	923	10,578	24	261	37	611
2007-2017 Calendar year																				
Total	100%	0.7	5.1	1.1	11.8	100%	0.8	4.4	1.1	10.0	100%	0.5	4.6	0.8	11.3	100%	0.5	3.9	0.8	9.4
0-19	100	2.5	9.6	2.5	18.8	100	0.6	8.8	0.9	20.4	100	1.9	9.3	1.9	18.8	100	0.6	8.7	1.0	19.9
20-29	100	2.1	7.7	2.7	17.4	100	2.4	8.0	3.3	17.1	100	1.7	7.2	2.1	16.9	100	1.8	7.4	2.5	16.3
30-39	100	0.8	6.5	1.3	15.4	100	1.4	6.6	1.9	14.4	100	0.7	6.4	1.2	15.3	100	1.1	6.2	1.5	13.8
40-49	100	0.9	5.5	1.3	13.7	100	1.0	5.0	1.5	12.4	100	0.7	5.2	1.0	13.2	100	0.6	4.6	1.1	11.9
50-59	100	0.9	5.6	1.4	14.5	100	1.3	4.8	1.8	11.3	100	0.6	5.3	1.0	14.1	100	0.6	3.9	1.0	10.5
60-69	100	0.7	5.3	1.1	13.2	100	0.5	4.7	0.7	11.8	100	0.5	4.8	0.8	12.5	100	0.3	4.0	0.5	10.9
70-79	100	0.8	5.2	1.0	12.0	100	0.5	4.1	0.7	9.8	100	0.4	4.4	0.6	11.2	100	0.2	3.6	0.4	9.3
80+	100	0.4	3.7	0.6	7.3	100	0.3	3.0	0.5	6.4	100	0.3	3.1	0.4	6.8	100	0.2	2.5	0.3	5.8

DST: Drug susceptibility test. MDR: Multi-drug resistance, i.e., resistant to at least INH and RFP.

INH: Isoniazid. RFP: Rifampicin.

Previous table Drug susceptibility test results among newly notified pulmonary tuberculosis patients, by sex and age group, 2007-2017 (Re-count of foreigners)

Age group	Total										New treatment (Re-count)									
	Male					Female					Male					Female				
	DST result obtained	MDR	Any INH resistance	Any RFP resistance	*Any resistance	DST result obtained	MDR	Any INH resistance	Any RFP resistance	*Any resistance	DST result obtained	MDR	Any INH resistance	Any RFP resistance	*Any resistance	DST result obtained	MDR	Any INH resistance	Any RFP resistance	*Any resistance
2007-2017 Calendar year																				
Total	1781	72	205	86	336	1876	82	231	104	374	1692	49	174	63	302	1781	60	202	77	333
0-19	117	9	26	9	37	66	1	10	2	13	113	6	23	6	34	64	1	9	2	12
20-29	903	46	111	55	179	854	48	120	62	199	867	34	93	42	162	821	35	104	46	178
30-39	313	10	30	14	54	466	19	62	22	89	300	8	28	12	50	442	15	57	17	82
40-49	149	5	15	6	27	261	5	20	7	39	137	1	10	1	20	244	2	17	3	34
50-59	98	0	5	0	9	102	5	12	6	18	93	0	5	0	9	93	4	9	5	13
60-69	90	2	11	2	20	53	1	3	2	6	81	2	9	2	18	51	1	3	2	6
70-79	58	0	4	0	5	30	3	4	3	6	53	0	4	0	5	24	2	3	2	4
80+	53	0	3	0	5	44	0	0	0	4	48	0	2	0	4	42	0	0	0	4
2007-2017 Calendar year																				
Total	100%	4.0	11.5	4.8	18.9	100%	4.4	12.3	5.5	19.9	100%	2.9	10.3	3.7	17.8	100%	3.4	11.3	4.3	18.7
0-19	100	7.7	22.2	7.7	31.6	100	1.5	15.2	3.0	19.7	100	5.3	20.4	5.3	30.1	100	1.6	14.1	3.1	18.8
20-29	100	5.1	12.3	6.1	19.8	100	5.6	14.1	7.3	23.3	100	3.9	10.7	4.8	18.7	100	4.3	12.7	5.6	21.7
30-39	100	3.2	9.6	4.5	17.3	100	4.1	13.3	4.7	19.1	100	2.7	9.3	4.0	16.7	100	3.4	12.9	3.8	18.6
40-49	100	3.4	10.1	4.0	18.1	100	1.9	7.7	2.7	14.9	100	0.7	7.3	0.7	14.6	100	0.8	7.0	1.2	13.9
50-59	100	0.0	5.1	0.0	9.2	100	4.9	11.8	5.9	17.6	100	0.0	5.4	0.0	9.7	100	4.3	9.7	5.4	14.0
60-69	100	2.2	12.2	2.2	22.2	100	1.9	5.7	3.8	11.3	100	2.5	11.1	2.5	22.2	100	2.0	5.9	3.9	11.8
70-79	100	0.0	6.9	0.0	8.6	100	10.0	13.3	10.0	20.0	100	0.0	7.5	0.0	9.4	100	8.3	12.5	8.3	16.7
80+	100	0.0	5.7	0.0	9.4	100	0.0	0.0	0.0	9.1	100	0.0	4.2	0.0	8.3	100	0.0	0.0	0.0	9.5

DST: Drug susceptibility test. MDR: Multi-drug resistance, i.e., resistant to at least INH and RFP. INH: Isoniazid. RFP: Rifampicin.