

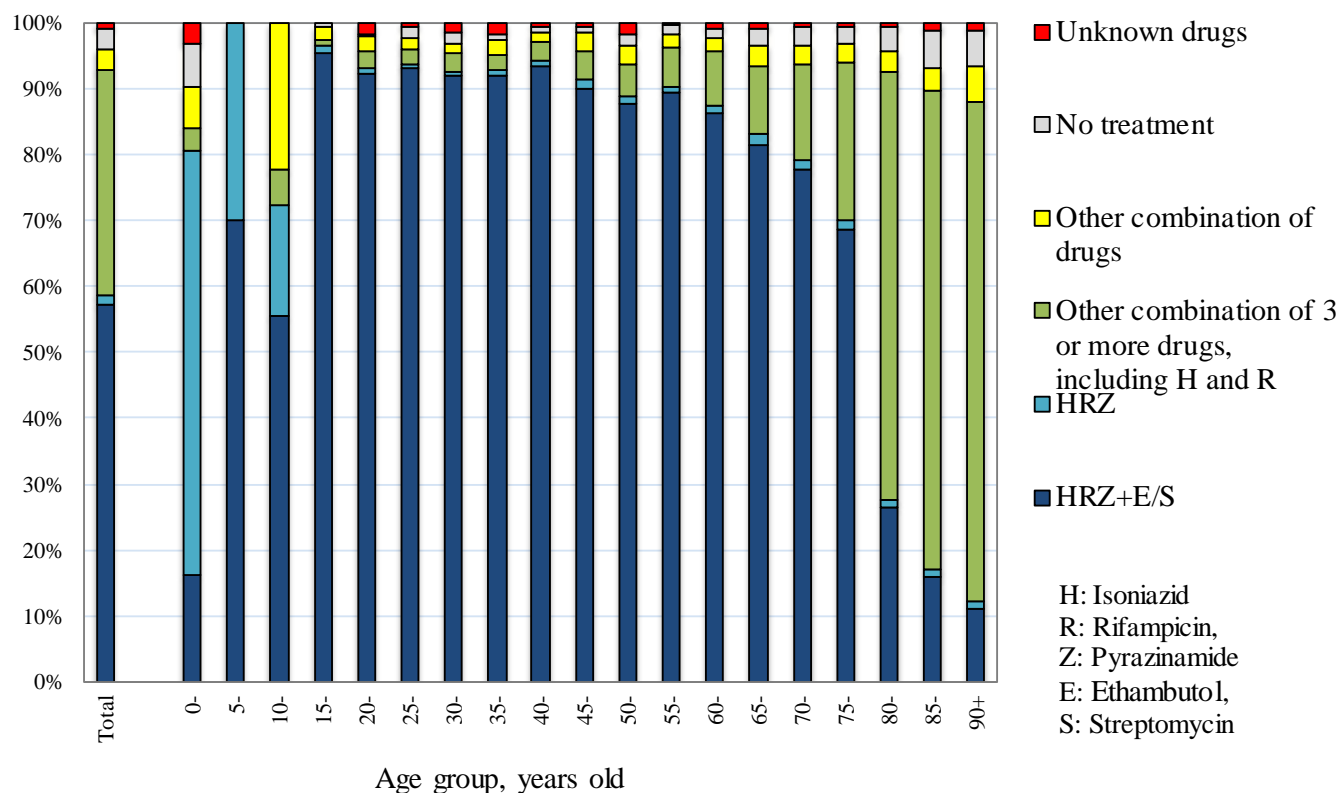
【Treatment 1】

Table 1 Number of patients with TB on re-treatment, by year when previous TB treatment was initiated and age group, 2017

Year when previous TB treatment initiated	Total	Age group (years)								Previous TB treatment regimen unknown (re-count)
		0-19	20-29	30-39	40-49	50-59	60-69	70-79	80+	
Total	839	5	42	43	75	82	107	165	320	246
~1949	46	0	0	0	0	0	0	4	42	34
1950-59	106	0	0	0	0	0	2	22	82	62
1960-69	61	0	0	0	0	1	8	27	25	38
1970-79	28	0	0	0	0	2	10	7	9	15
1980-89	29	0	0	0	2	6	8	6	7	24
1990-99	43	0	1	3	7	6	8	6	12	26
2000-09	94	0	2	8	14	12	14	23	21	18
2010-17	432	5	39	32	52	55	57	70	122	29
2005-2017 (re-count)										
2005	9	0	0	1	4	1	1	1	1	1
2006	7	0	0	2	0	2	1	0	2	3
2007	12	0	0	1	1	3	2	3	2	0
2008	13	0	0	1	1	0	2	5	4	3
2009	12	0	2	1	2	2	0	1	4	1
2010	33	0	5	3	5	3	5	3	9	5
2011	18	0	1	0	1	3	3	6	4	1
2012	25	0	3	0	1	4	3	3	11	5
2013	40	0	2	4	7	5	3	6	13	1
2014	64	0	5	2	8	8	11	13	17	4
2015	103	0	8	8	15	11	14	13	34	6
2016	113	2	12	10	11	17	14	21	26	6
2017	36	3	3	5	4	4	4	5	8	1

TB: tuberculosis

Fig.1 Anti-tuberculosis drugs upon notification by age group in 2017



Previous table Number of retreatment tuberculosis patients by previous tuberculosis treatment regimen and age group, 2017

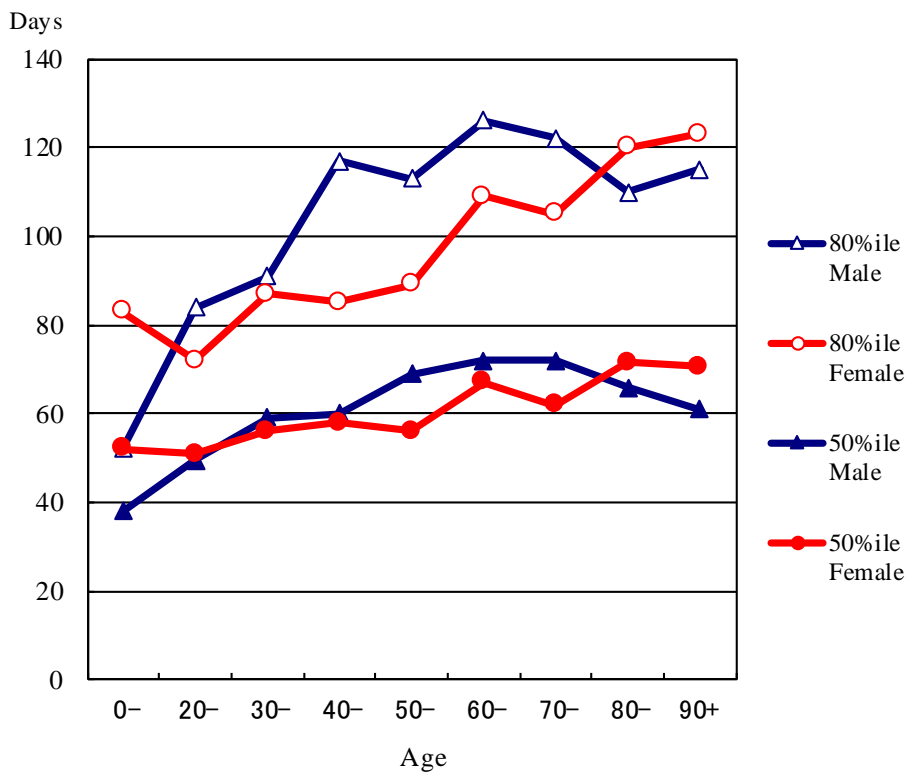
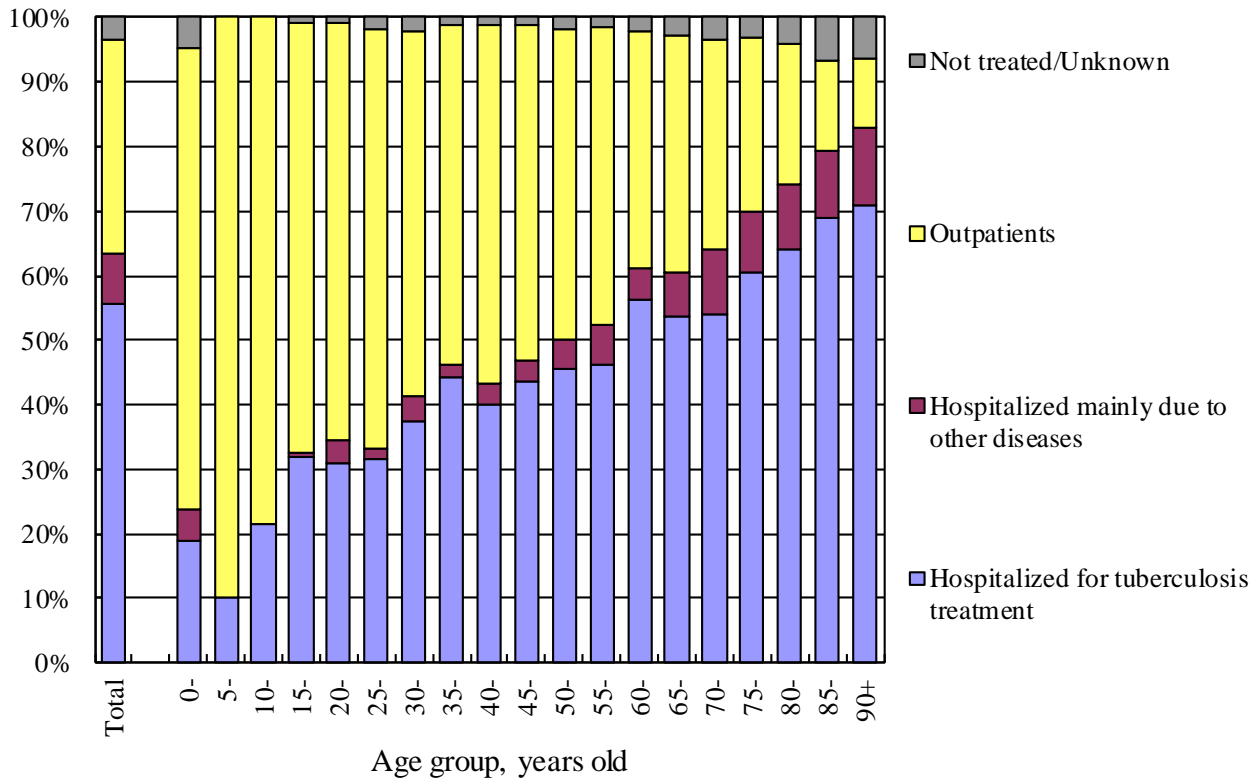
Age group	Retreatmen t	Previous treatment regimen				
		Regimen with HRZ	Other regimen with HR	Other regimen	LTBI treatment	Unknown
Total	839	253	143	101	96	246
0-4	2	0	0	0	1	1
5-9	1	0	0	0	1	0
10-14	2	0	2	0	0	0
15-19						
20-24	17	7	0	0	6	4
25-29	25	11	2	0	7	5
30-34	20	10	1	0	7	2
35-39	23	11	1	0	10	1
40-44	26	11	4	0	8	3
45-49	49	26	8	0	10	5
50-54	37	14	9	1	6	7
55-59	45	21	4	1	8	11
60-64	40	19	2	3	5	11
65-69	67	23	13	10	4	17
70-74	64	16	10	9	5	24
75-79	101	33	17	16	4	31
80-84	118	23	20	25	8	42
85-89	114	20	32	19	5	38
90+	88	8	18	17	1	44

H : Isoniazid, R : Rifampicin, Z : Pyrazinamide

LTBI : Latent Tuberculosis Infection

【Treatment 2】

Fig.2 Proportion of the outpatients and the hospitalized patients by age group in 2017(N=13,011)



Previous Fig. Median (50 percentile) and 80 percentile of duration of hospitalization among those hospitalized with tuberculosis and with known discharged day, new sputum-smear positive pulmonary tuberculosis patients in 2016 by sex and age group

Previous table Proportion (%) hospitalized among newly notified tuberculosis patients in 2017 by age group and patient classification

Age	Pulmonary TB									
	Total		Sputum smear positive		Other bacillary positive		Bacillary negative /unknown		Extra-pulmonary	
	Ht	Ho	Ht	Ho	Ht	Ho	Ht	Ho	Ht	Ho
Total	55.6	7.7	91.1	2.5	25.9	13.0	10.3	12.1	30.9	22.0
0-19	28.2	1.1	86.4	0.0	8.9	1.8	9.1	1.3	20.0	20.0
20-29	31.3	2.4	90.3	0.7	12.3	3.9	3.5	1.9	12.6	7.9
30-39	40.8	2.9	90.5	1.3	13.8	4.6	3.8	2.7	18.3	9.9
40-49	42.0	3.2	91.9	0.8	14.5	3.6	1.6	7.4	15.6	12.7
50-59	46.0	5.2	90.6	0.7	14.9	9.1	4.3	8.1	21.5	11.4
60-69	54.7	6.1	92.5	1.6	18.7	10.8	11.3	10.4	24.8	19.6
70-79	57.8	9.6	90.2	3.2	25.4	15.3	14.0	20.1	28.7	22.0
80-89	66.5	10.4	91.2	3.4	37.7	17.4	22.5	28.9	38.7	27.7
90+	70.8	12.1	91.1	3.2	41.5	24.4	35.6	30.1	44.9	29.3

Ht: Hospitalized for tuberculosis treatment

Ho: Hospitalized mainly due to other diseases

【Treatment Outcomes】

Table 2 Patients deleted from tuberculosis registration by the end of years (in 2016 and in 2017)
- Patients with tuberculosis patients and LTBI notified in the previous years (in 2015 and in 2016, respectively) -

	Newly notified patients with tuberculosis												Patients with LTBI (Not included in the total) (%)			
	Total (%)	Patients with pulmonary tuberculosis										Patients with extra-pulmonary tuberculosis (%)				
		Sub-total (pulmonary tuberculosis) (%)		Sputum-smear positive		Other bacteriologically positive (%)	Bacteriologically negative and others (%)									
				New (%)	Re-treatment (%)											
Newly notified tuberculosis cases in 2015*	18,071	(100)	13,971	(100)	6,630	(100)	454	(100)	5,108	(100)	1,779	(100)	4,100	(100)	6,645	(100)
Total number of patients deleted from tuberculosis registration by the end of 2014	5,579	(30.9)	4,413	(31.6)	2,478	(37.4)	153	(33.7)	1,426	(27.9)	356	(20.0)	1,166	(28.4)	1,296	(19.5)
No need for post-treatment follow-up	29	(0.2)	13	(0.1)	5	(0.1)	0	(0.0)	3	(0.1)	5	(0.3)	16	(0.4)	639	(9.6)
Died	4,471	(24.7)	3,530	(25.3)	2,090	(31.5)	127	(28.0)	1,127	(22.1)	186	(10.5)	941	(23.0)	183	(2.8)
Tuberculosis-related death	1,453	(8.0)	1,241	(8.9)	920	(13.9)	58	(12.8)	227	(4.4)	36	(2.0)	212	(5.2)	1	(0.0)
Other causes of death	3,018	(16.7)	2,289	(16.4)	1,170	(17.6)	69	(15.2)	900	(17.6)	150	(8.4)	729	(17.8)	182	(2.7)
Transfer out	972	(5.4)	793	(5.7)	356	(5.4)	24	(5.3)	268	(5.2)	145	(8.2)	179	(4.4)	380	(5.7)
Register during follow-up	91	(0.5)	66	(0.5)	26	(0.4)	1	(0.2)	24	(0.5)	15	(0.8)	25	(0.6)	53	(0.8)
Other reasons	16	(0.1)	11	(0.1)	1	(0.0)	1	(0.2)	4	(0.1)	5	(0.3)	5	(0.1)	41	(0.6)
Newly notified tuberculosis cases in 2016**	17,539	(100)	13,579	(100)	6,291	(100)	365	(100)	5,031	(100)	1,892	(100)	3,960	(100)	7,454	(100)
Total number of patients deleted from tuberculosis registration by the end of 2014	5,584	(31.8)	4,432	(32.6)	2,422	(38.5)	132	(36.2)	1,469	(29.2)	409	(21.6)	1,152	(29.1)	3,089	(41.4)
No need for post-treatment follow-up	27	(0.2)	13	(0.1)	4	(0.1)	1	(0.3)	3	(0.1)	5	(0.3)	14	(0.4)	2385	(32.0)
Died	4,411	(25.1)	3,476	(25.6)	2,041	(32.4)	108	(29.6)	1,127	(22.4)	200	(10.6)	935	(23.6)	219	(2.9)
Tuberculosis-related death	1,321	(7.5)	1,077	(7.9)	808	(12.8)	41	(11.2)	188	(3.7)	40	(2.1)	244	(6.2)	1	(0.0)
Other causes of death	3,090	(17.6)	2,399	(17.7)	1,233	(19.6)	67	(18.4)	939	(18.7)	160	(8.5)	691	(17.4)	218	(2.9)
Transfer out	1,036	(5.9)	857	(6.3)	336	(5.3)	19	(5.2)	312	(6.2)	190	(10.0)	179	(4.5)	373	(5.0)
Register during follow-up	83	(0.5)	66	(0.5)	36	(0.6)	4	(1.1)	17	(0.3)	9	(0.5)	17	(0.4)	61	(0.8)
Other reasons	27	(0.2)	20	(0.1)	5	(0.1)	0	(0.0)	10	(0.2)	5	(0.3)	7	(0.2)	51	(0.7)

* Based on the annual report database in 2016. ** Based on the annual report database in 2017.

LTBI : Latent Tuberculosis Infection

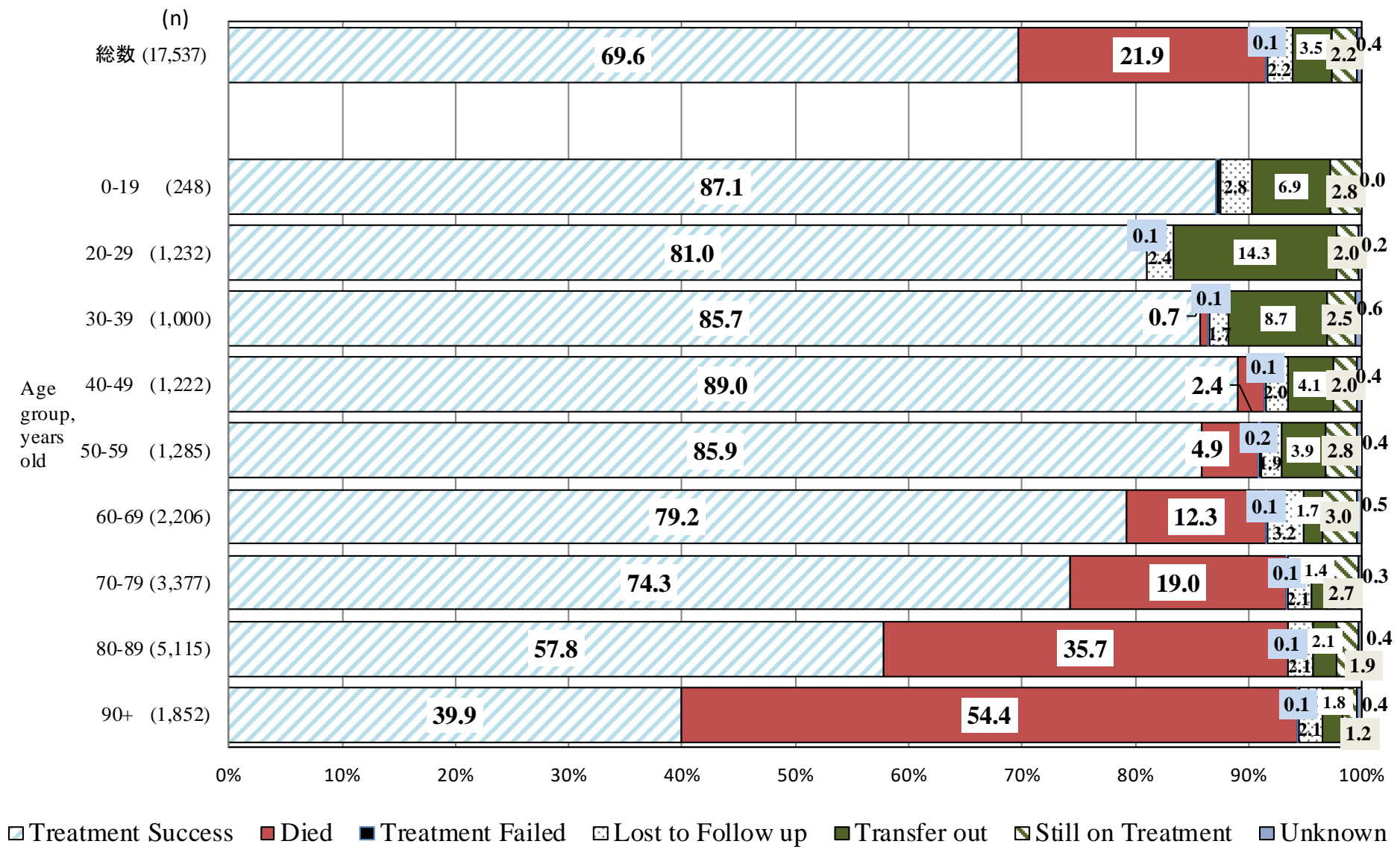


Fig. 3 Treatment outcomes of newly notified tuberculosis patients by age group, 2016 year cohort (%)

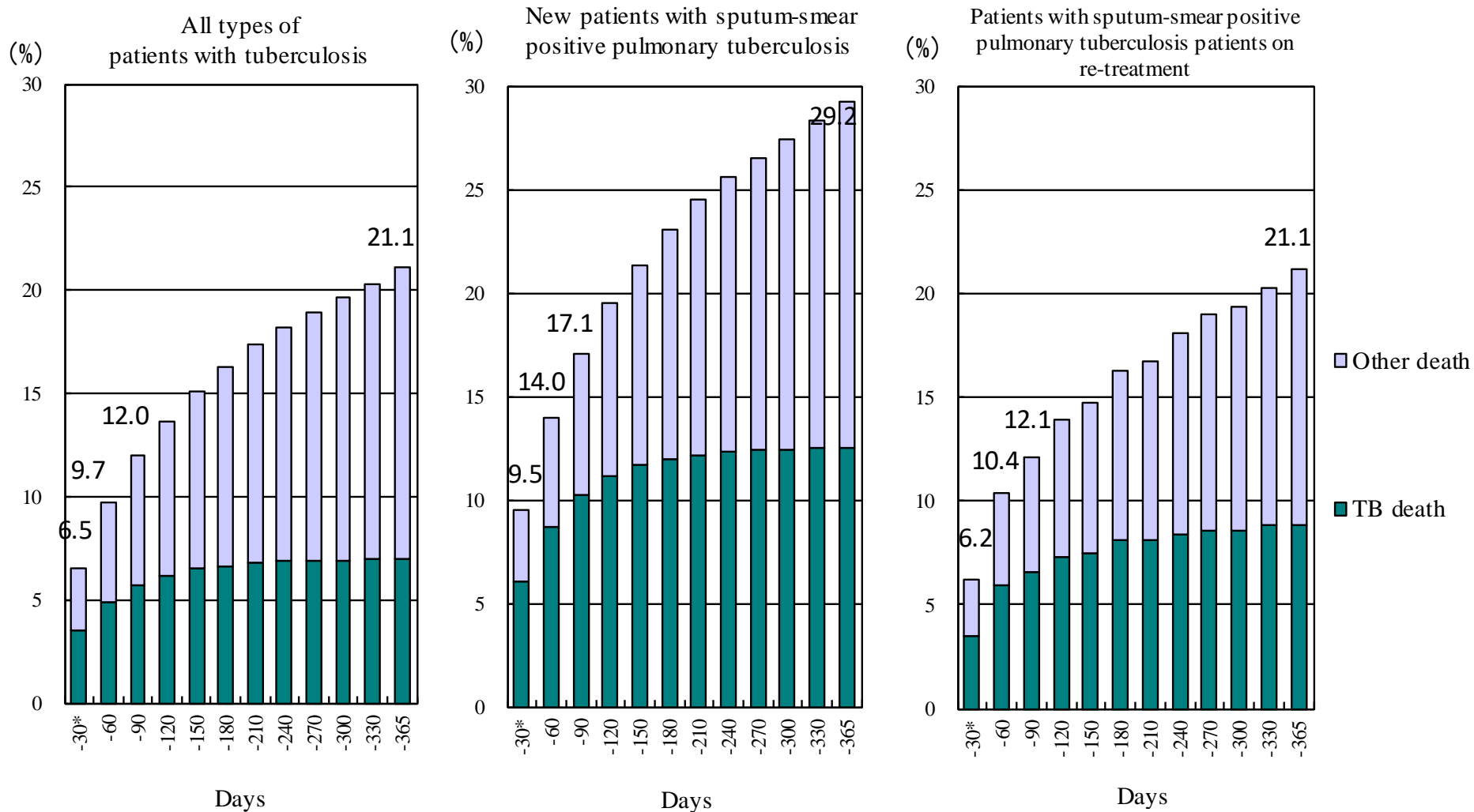


Fig. 4 Cumulative proportion of deaths by duration of treatment - Newly notified patients with tuberculosis in 2016

* Includes patients who died before the commencement of treatment.
 TB: tuberculosis