



Monthly Report of Tuberculosis Surveillance, Japan – September, 2018

The reporting and recording of tuberculosis (TB) and Latent TB Infection (LTBI) are managed at public health centers (PHCs) by the nationwide computerized TB surveillance system in Japan. A monthly report is compiled from the database automatically and regularly on 4th Friday of the next month, and an annual report is also produced much like the monthly report, but with sufficient time for data correction.

Tables and figures shown in the monthly reports are as follows.

Figures

- Figure 1. Number of newly notified TB cases by month, Japan, 2018
- Figure 2. Newly notified TB cases by sex and age, Japan, summation (Jan. - Sep.) 2018
- Figure 3. Notification rate of TB cases by sex and age, Japan, summation (Jan. - Sep.) 2018
- Figure 4. Notification rate of TB by prefecture, Japan, summation (Jan. - Sep.) 2018
- Figure 5. Notification rate of TB by major city, Japan, summation (Jan. - Sep.) 2018
- Figure 6. Number of LTBI, Japan, 2018
- Figure 7. Number of LTBI by sex and age group, Japan, summation (Jan. - Sep.) 2018

Tables

- Table 1. Newly notified TB cases and rates by sex and age, Japan, 2018
- Table 2. Newly notified sputum smear positive pulmonary TB cases and rates by sex and age, Japan, 2018
- Table 3. Newly notified TB cases and rates by prefecture, Japan, 2018
- Table 4. Newly notified TB cases and rates by major city, Japan, 2018
- Table 5. LTBI cases and rates by sex and age, Japan, 2018
- Table 6. LTBI cases and rates by prefecture, Japan, 2018
- Table 7. LTBI cases and rates by major city, Japan, 2018

Figure 1. Number of newly notified TB cases by month, Japan, 2015-2018

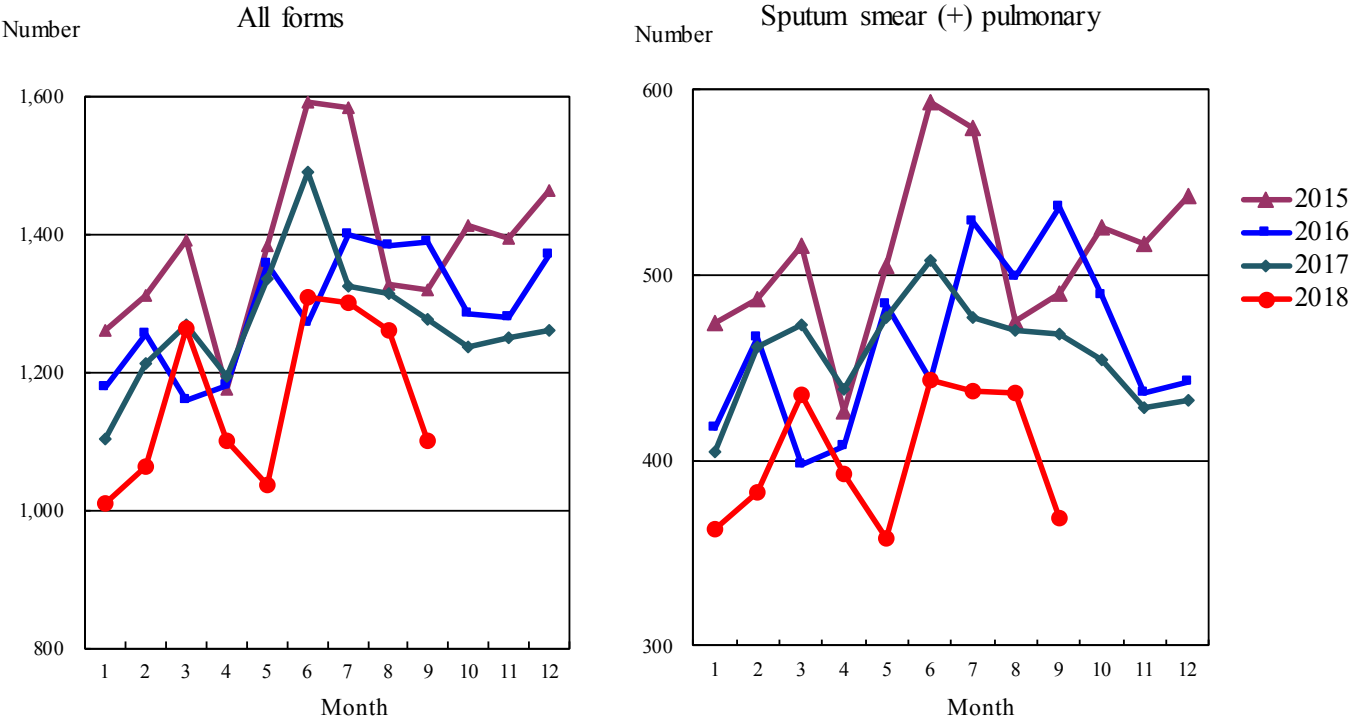


Figure 2. Newly notified TB patients by sex and age, Japan, summation (Jan.-Sep.) 2018

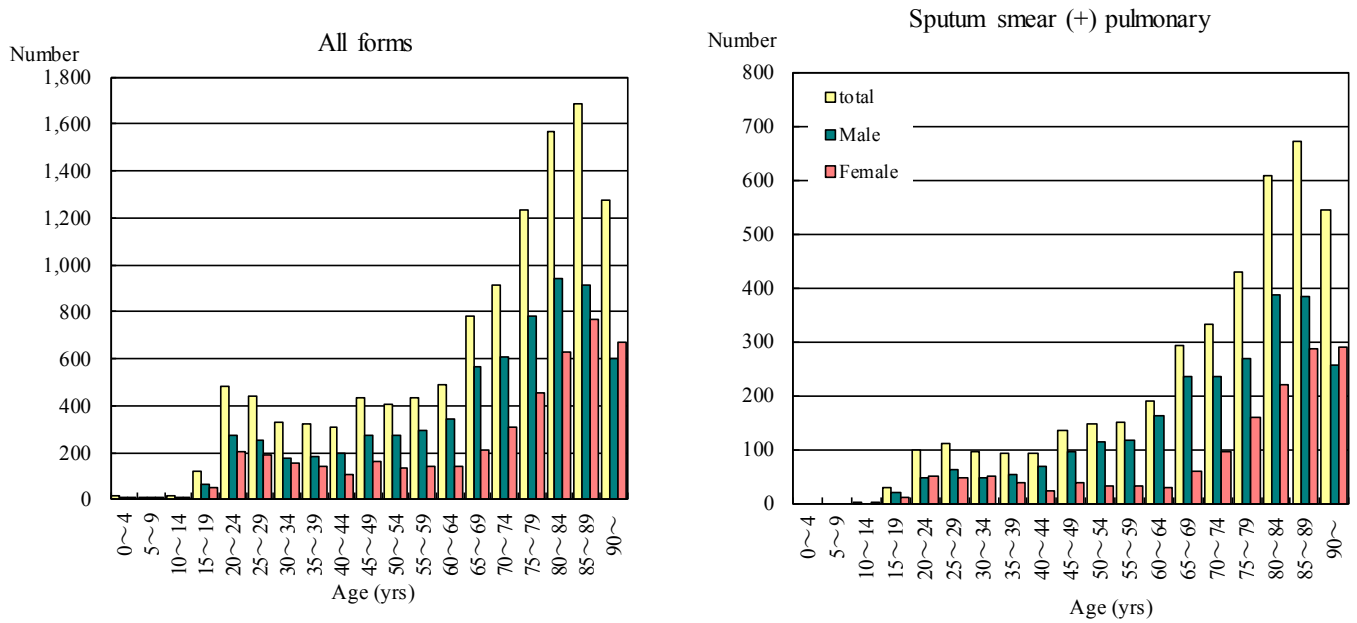


Figure 3. Notification rate of TB cases by sex and age, Japan, summation (Jan.-Sep.) 2018

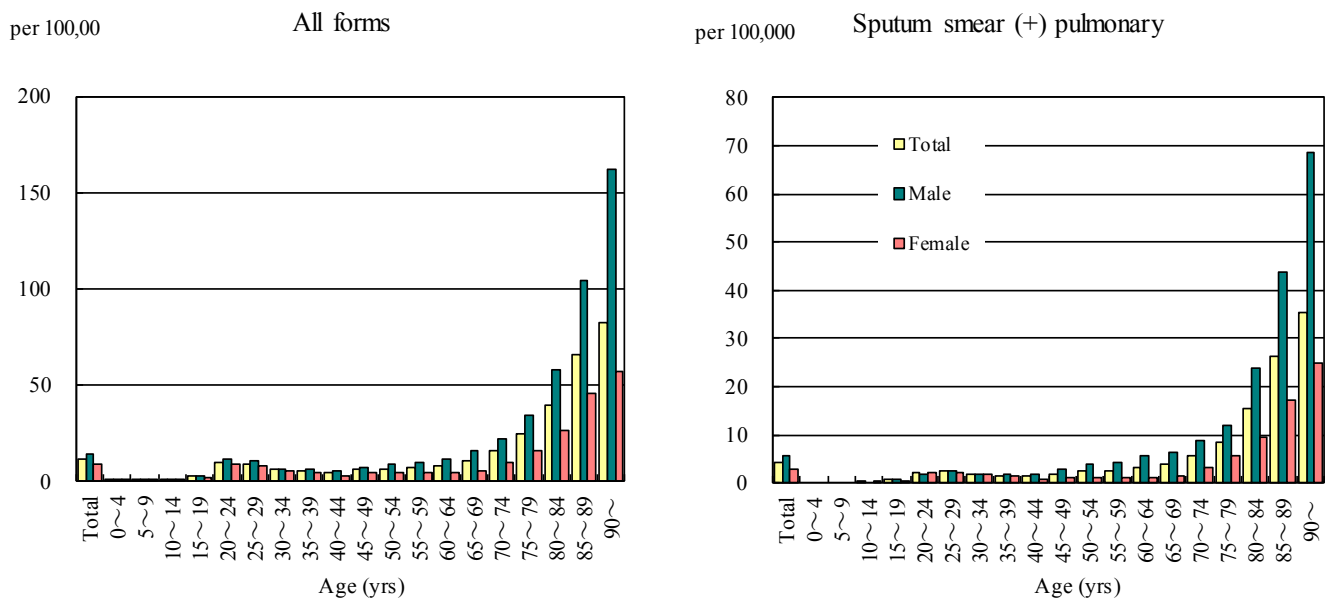


Figure 4. Notification rates of TB by prefecture, Japan, summation (Jan.-Sep.) 2018

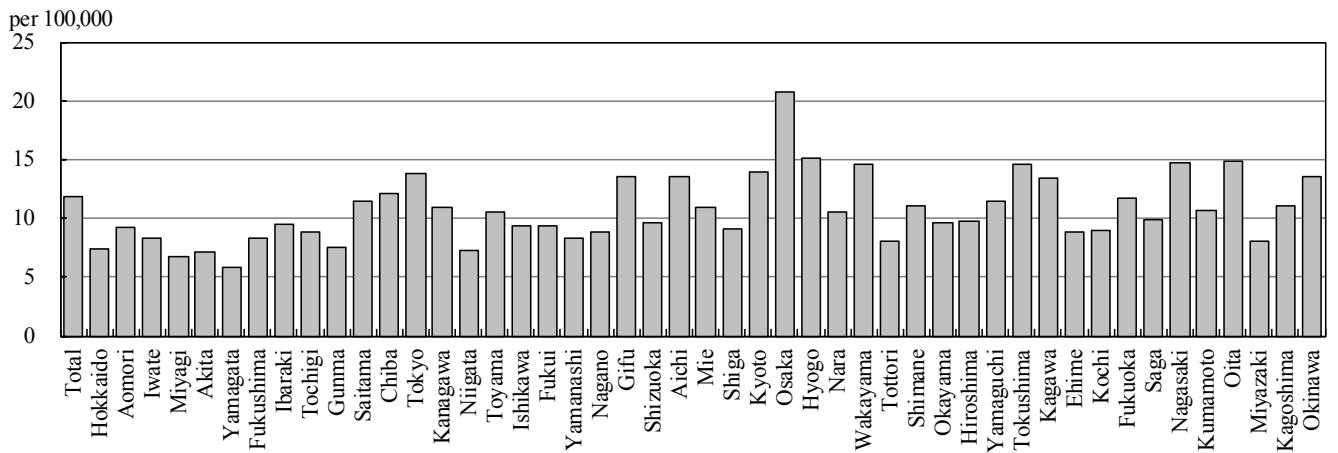


Figure 5. Notification rates of TB major city, Japan, summation (Jan.-Sep.) 2018

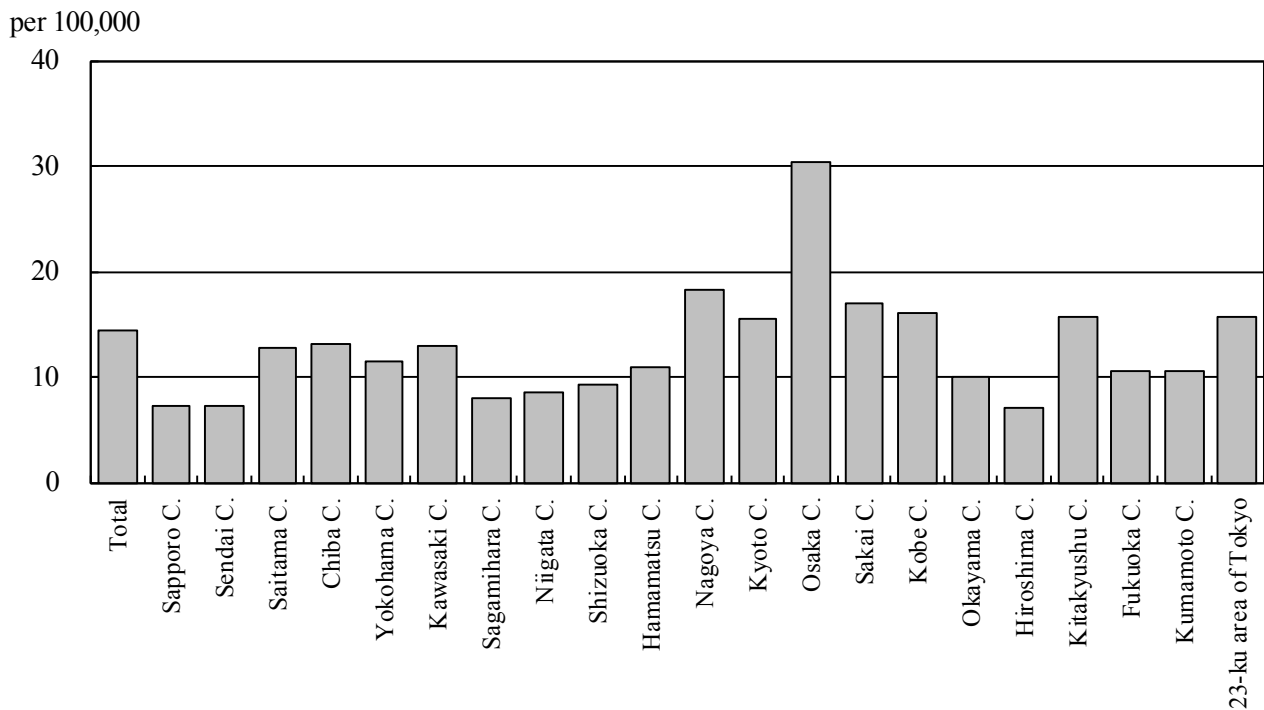


Figure 6. Number of LTBI, Japan, 2015-2018

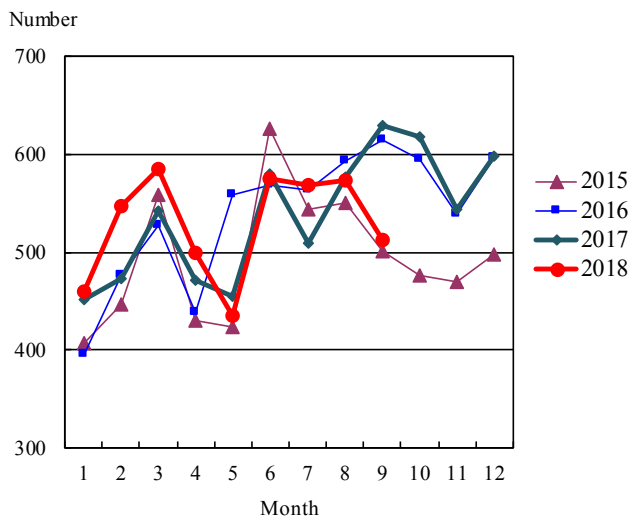


Figure 7. Number of LTBI by sex and age group, Japan, summation (Jan.-Sep.) 2018

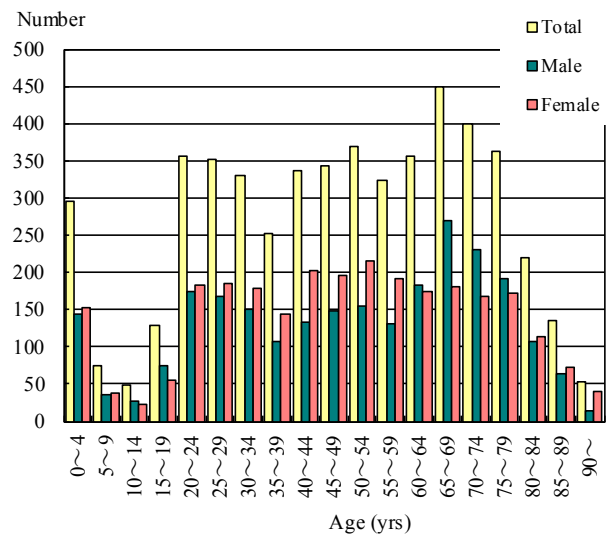


Table 1. Newly notified TB cases and rates by sex and age, Japan, 2018

	Sep.			Summation (Jan.-Sep.)			Notification rate (per 100,000)		
	Total	Male	Female	Total	Male	Female	Total	Male	Female
Total	1,101	663	438	11,249	6,770	4,479	11.8	14.6	9.2
0~4	0	0	0	15	10	5	0.4	0.5	0.3
5~9	0	0	0	4	3	1	0.1	0.1	0.1
10~14	3	2	1	15	9	6	0.4	0.4	0.3
15~19	14	5	9	118	68	50	2.6	2.9	2.3
20~24	48	27	21	480	276	204	10.3	11.5	9.0
25~29	43	27	16	442	251	191	9.4	10.4	8.3
30~34	29	16	13	329	173	156	6.2	6.4	5.9
35~39	30	17	13	322	180	142	5.4	6.0	4.9
40~44	32	14	18	307	200	107	4.3	5.6	3.1
45~49	40	24	16	433	271	162	6.1	7.6	4.6
50~54	41	28	13	405	274	131	6.6	8.9	4.3
55~59	47	30	17	432	292	140	7.6	10.3	4.9
60~64	50	34	16	487	345	142	8.3	12.0	4.8
65~69	84	66	18	782	569	213	10.5	15.8	5.5
70~74	86	55	31	911	606	305	15.7	22.3	9.9
75~79	133	87	46	1,237	783	454	24.5	34.7	16.2
80~84	150	93	57	1,571	941	630	39.6	58.2	26.8
85~89	144	82	62	1,684	916	768	66.1	104.1	46.1
90~	127	56	71	1,275	603	672	82.7	162.2	57.5

Temporary registrants = 44, Total of registrants and temporary registrants = 1,145

Rate: summation / (population*1/12)*100,000

Population: as of 1st Oct. 2017

Table 2. Newly notified sputum smear positive pulmonary TB cases and rates by sex and age, Japan, 2018

	Sep.			Summation (Jan.-Sep.)			Notification rate (per 100,000)		
	Total	Male	Female	Total	Male	Female	Total	Male	Female
Total	369	232	137	4,014	2,549	1,465	4.2	5.5	3.0
0~4	0	0	0	0	0	0	0.0	0.0	0.0
5~9	0	0	0	0	0	0	0.0	0.0	0.0
10~14	0	0	0	2	0	2	0.0	0.0	0.1
15~19	2	1	1	29	19	10	0.6	0.8	0.5
20~24	11	7	4	98	47	51	2.1	2.0	2.2
25~29	10	5	5	110	62	48	2.3	2.6	2.1
30~34	8	5	3	97	46	51	1.8	1.7	1.9
35~39	8	5	3	91	52	39	1.5	1.7	1.3
40~44	10	5	5	93	69	24	1.3	1.9	0.7
45~49	8	5	3	134	96	38	1.9	2.7	1.1
50~54	15	12	3	147	115	32	2.4	3.7	1.1
55~59	21	14	7	149	117	32	2.6	4.1	1.1
60~64	20	17	3	191	162	29	3.3	5.6	1.0
65~69	29	26	3	292	234	58	3.9	6.5	1.5
70~74	32	20	12	332	236	96	5.7	8.7	3.1
75~79	39	18	21	428	268	160	8.5	11.9	5.7
80~84	54	37	17	607	387	220	15.3	23.9	9.4
85~89	49	29	20	670	384	286	26.3	43.6	17.2
90~	53	26	27	544	255	289	35.3	68.6	24.7

Rate: summation / (population*1/12)*100,000

Population: as of 1st Oct. 2017

Table 3. Newly notified TB cases and rates by prefecture, Japan, 2018

	Sep.		Summation (Jan.-Sep.)		Notification rate (per 100,000)	
	Newly notified TB	Sputum smear (+)	Newly notified TB	Sputum smear (+)	Newly notified TB	Sputum smear (+)
Total	1,101	369	11,249	4,014	11.8	4.2
Hokkaido	15	4	297	102	7.4	2.6
Aomori	9	2	89	36	9.3	3.8
Iwate	11	5	78	27	8.3	2.9
Miyagi	10	6	118	45	6.8	2.6
Akita	4	1	53	20	7.1	2.7
Yamagata	5	0	48	13	5.8	1.6
Fukushima	7	2	118	40	8.4	2.8
Ibaraki	20	7	207	79	9.5	3.6
Tochigi	13	5	129	39	8.8	2.7
Gunma	4	1	111	29	7.6	2.0
Saitama	61	20	627	224	11.4	4.1
Chiba	55	19	568	197	12.1	4.2
Tokyo	151	47	1,426	546	13.9	5.3
Kanagawa	73	25	749	257	10.9	3.7
Niigata	7	4	123	42	7.2	2.5
Toyama	7	0	83	22	10.5	2.8
Ishikawa	6	1	81	21	9.4	2.4
Fukui	2	0	55	19	9.4	3.3
Yamanashi	3	2	51	14	8.3	2.3
Nagano	17	7	138	51	8.9	3.3
Gifu	16	3	204	74	13.5	4.9
Shizuoka	26	8	264	76	9.6	2.8
Aichi	78	29	764	255	13.5	4.5
Mie	15	5	147	58	10.9	4.3
Shiga	10	3	97	29	9.2	2.7
Kyoto	28	8	272	99	14.0	5.1
Osaka	140	52	1,369	523	20.7	7.9
Hyogo	74	35	623	249	15.1	6.0
Nara	11	4	106	44	10.5	4.4
Wakayama	12	3	103	38	14.5	5.4
Tottori	2	1	34	13	8.0	3.1
Shimane	7	3	57	18	11.1	3.5
Okayama	12	6	137	51	9.6	3.6
Hiroshima	20	6	208	82	9.8	3.9
Yamaguchi	10	1	119	27	11.5	2.6
Tokushima	10	4	81	34	14.5	6.1
Kagawa	7	1	97	27	13.4	3.7
Ehime	11	2	91	30	8.9	2.9
Kochi	1	1	48	13	9.0	2.4
Fukuoka	58	13	450	158	11.7	4.1
Saga	6	3	61	29	9.9	4.7
Nagasaki	16	5	150	50	14.8	4.9
Kumamoto	16	7	142	52	10.7	3.9
Oita	14	5	128	51	14.8	5.9
Miyazaki	4	1	66	31	8.1	3.8
Kagoshima	6	1	135	38	11.1	3.1
Okinawa	11	1	147	42	13.6	3.9

Rate: summation / (population*1/12)*100,000

Population: as of 1st Oct. 2017

Table 4. Newly notified TB cases and rates by major city, Japan, 2018

	Sep.		Summation (Jan.-Sep.)		Notification Rate (per 100,000)	
	Newly notified TB	Sputum Smear(+)	Newly notified TB	Sputum Smear(+)	Newly notified TB	Sputum Smear(+)
Total	385	139	3,983	1,446	14.3	5.2
Sapporo City	0	0	106	30	7.2	2.0
Sendai City	6	3	59	21	7.2	2.6
Saitama City	10	5	124	41	12.8	4.2
Chiba City	12	5	96	39	13.1	5.3
Yokohama City	27	10	321	98	11.5	3.5
Kawasaki City	17	9	146	48	12.9	4.3
Sagamihara City	3	3	43	19	7.9	3.5
Niigata City	3	1	52	15	8.6	2.5
Shizuoka City	1	1	49	17	9.2	3.2
Hamamatsu City	6	0	65	18	10.9	3.0
Nagoya City	34	14	318	121	18.3	7.0
Kyoto City	17	5	172	65	15.6	5.9
Osaka City	59	21	619	241	30.4	11.8
Sakai City	15	7	106	46	16.9	7.4
Kobe City	22	8	184	55	16.0	4.8
Okayama City	2	0	53	13	10.0	2.4
Hiroshima City	4	2	63	23	7.0	2.6
Kitakyushu City	14	3	112	39	15.7	5.5
Fukuoka City	12	4	123	48	10.5	4.1
Kumamoto City	5	2	59	24	10.6	4.3
23-ku area of Tokyo	116	36	1,113	425	15.7	6.0

Rate: summation / (population*1/12)*100,000

Population: as of 1st Oct. 2017

Major city: city with a population of one million or more.

Table 4 is a re-count of Table 3.

Table 5. LTBI cases and rates by sex and age, Japan, 2018

	Sep.			Summation (Jan.-Sep.)			(Ratio) LTBI/Newly notified cases		
	Total	Male	Female	Total	Male	Female	Total	Male	Female
Total	513	253	260	5,191	2,505	2,686	0.5	0.4	0.6
0~4	28	12	16	295	143	152	19.7	14.3	30.4
5~9	10	6	4	74	36	38	18.5	12.0	38.0
10~14	9	6	3	49	26	23	3.3	2.9	3.8
15~19	7	3	4	129	74	55	1.1	1.1	1.1
20~24	30	12	18	357	175	182	0.7	0.6	0.9
25~29	26	14	12	352	167	185	0.8	0.7	1.0
30~34	32	12	20	330	151	179	1.0	0.9	1.1
35~39	17	8	9	253	108	145	0.8	0.6	1.0
40~44	31	14	17	336	133	203	1.1	0.7	1.9
45~49	35	19	16	344	148	196	0.8	0.5	1.2
50~54	41	19	22	369	154	215	0.9	0.6	1.6
55~59	41	16	25	324	132	192	0.8	0.5	1.4
60~64	32	18	14	357	182	175	0.7	0.5	1.2
65~69	33	16	17	450	270	180	0.6	0.5	0.8
70~74	56	33	23	399	231	168	0.4	0.4	0.6
75~79	35	19	16	363	192	171	0.3	0.2	0.4
80~84	25	14	11	220	107	113	0.1	0.1	0.2
85~89	23	11	12	136	63	73	0.1	0.1	0.1
90~	2	1	1	54	13	41	0.0	0.0	0.1

LTBI: latent TB Infection

Number of LTBI is not included in the newly notified TB patients

Table 6. LTBI cases and rates by prefecture, Japan, 2018

	Sep.	Summation (Jan.-Sep.)	
	LTBI	LTBI	(Ratio) LTBI /new TB
Total	513	5,191	0.46
Hokkaido	6	130	0.44
Aomori	4	51	0.57
Iwate	3	49	0.63
Miyagi	13	118	1.00
Akita	6	37	0.70
Yamagata	2	18	0.38
Fukushima	4	29	0.25
Ibaraki	23	108	0.52
Tochigi	2	35	0.27
Gunma	5	45	0.41
Saitama	25	311	0.50
Chiba	23	250	0.44
Tokyo	68	761	0.53
Kanagawa	26	361	0.48
Niigata	1	81	0.66
Toyama	0	67	0.81
Ishikawa	2	37	0.46
Fukui	2	33	0.60
Yamanashi	1	16	0.31
Nagano	16	82	0.59
Gifu	13	73	0.36
Shizuoka	12	73	0.28
Aichi	36	301	0.39
Mie	8	63	0.43
Shiga	1	63	0.65
Kyoto	6	132	0.49
Osaka	63	551	0.40
Hyogo	32	244	0.39
Nara	6	58	0.55
Wakayama	2	40	0.39
Tottori	3	12	0.35
Shimane	2	14	0.25
Okayama	15	108	0.79
Hiroshima	12	98	0.47
Yamaguchi	5	42	0.35
Tokushima	1	19	0.23
Kagawa	2	43	0.44
Ehime	2	25	0.27
Kochi	0	15	0.31
Fukuoka	22	209	0.46
Saga	3	24	0.39
Nagasaki	6	53	0.35
Kumamoto	7	40	0.28
Oita	6	57	0.45
Miyazaki	5	36	0.55
Kagoshima	7	62	0.46
Okinawa	4	117	0.80

LTBI: Latent TB Infection

Number of LTBI is not included in the newly notified TB patients.

Table 7. LTBI cases and rates by major city, Japan, 2018

	Sep.	Summation (Jan.-Sep.)	
	LTBI	LTBI	(Ratio) LTBI / new TB
Total	155	1,788	0.45
Sapporo City	0	48	0.45
Sendai City	7	90	1.53
Saitama City	4	35	0.28
Chiba City	1	31	0.32
Yokohama City	6	114	0.36
Kawasaki City	2	70	0.48
Sagamihara City	0	13	0.30
Niigata City	1	30	0.58
Shizuoka City	1	6	0.12
Hamamatsu City	4	22	0.34
Nagoya City	12	104	0.33
Kyoto City	3	70	0.41
Osaka City	24	219	0.35
Sakai City	4	39	0.37
Kobe City	15	89	0.48
Okayama City	5	54	1.02
Hiroshima City	0	18	0.29
Kitakyushu City	12	50	0.45
Fukuoka City	5	57	0.46
Kumamoto City	1	14	0.24
23-ku area of Tokyo	48	615	0.55

LTBI: Latent TB Infection

Number of LTBI is not included in the newly notified TB patients,

Major city: city with a population of one million or more

Table 7 is a re-count of Table 6