



Monthly Report of Tuberculosis Surveillance, Japan – December, 2018

The reporting and recording of tuberculosis (TB) and Latent TB Infection (LTBI) are managed at public health centers (PHCs) by the nationwide computerized TB surveillance system in Japan. A monthly report is compiled from the database automatically and regularly on 4th Friday of the next month, and an annual report is also produced much like the monthly report, but with sufficient time for data correction.

Tables and figures shown in the monthly reports are as follows.

Figures

- Figure 1. Number of newly notified TB cases by month, Japan, 2018
- Figure 2. Newly notified TB cases by sex and age, Japan, summation (Jan. - Dec.) 2018
- Figure 3. Notification rate of TB cases by sex and age, Japan, summation (Jan. - Dec.) 2018
- Figure 4. Notification rate of TB by prefecture, Japan, summation (Jan. - Dec.) 2018
- Figure 5. Notification rate of TB by major city, Japan, summation (Jan. - Dec.) 2018
- Figure 6. Number of LTBI, Japan, 2018
- Figure 7. Number of LTBI by sex and age group, Japan, summation (Jan. - Dec.) 2018

Tables

- Table 1. Newly notified TB cases and rates by sex and age, Japan, 2018
- Table 2. Newly notified sputum smear positive pulmonary TB cases and rates by sex and age, Japan, 2018
- Table 3. Newly notified TB cases and rates by prefecture, Japan, 2018
- Table 4. Newly notified TB cases and rates by major city, Japan, 2018
- Table 5. LTBI cases and rates by sex and age, Japan, 2018
- Table 6. LTBI cases and rates by prefecture, Japan, 2018
- Table 7. LTBI cases and rates by major city, Japan, 2018

Figure 1. Number of newly notified TB cases by month, Japan, 2015-2018

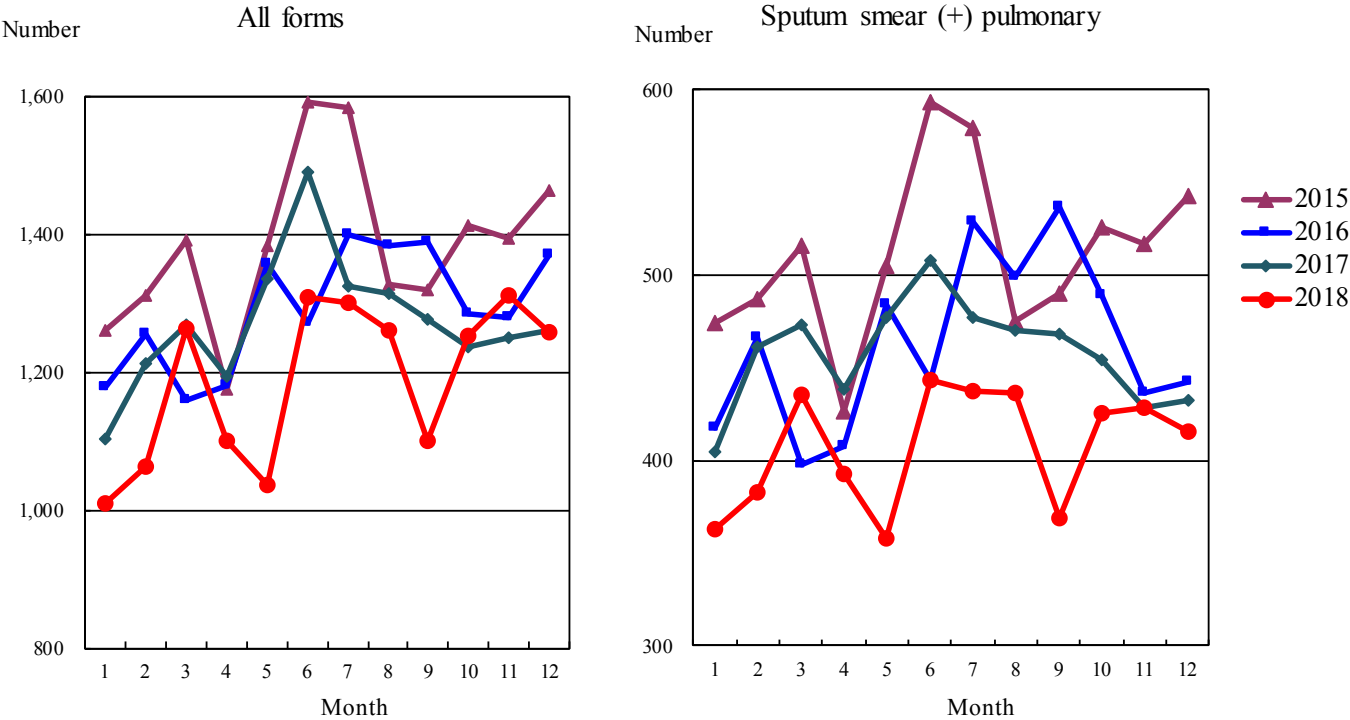


Figure 2. Newly notified TB patients by sex and age, Japan, summation (Jan.-Dec.) 2018

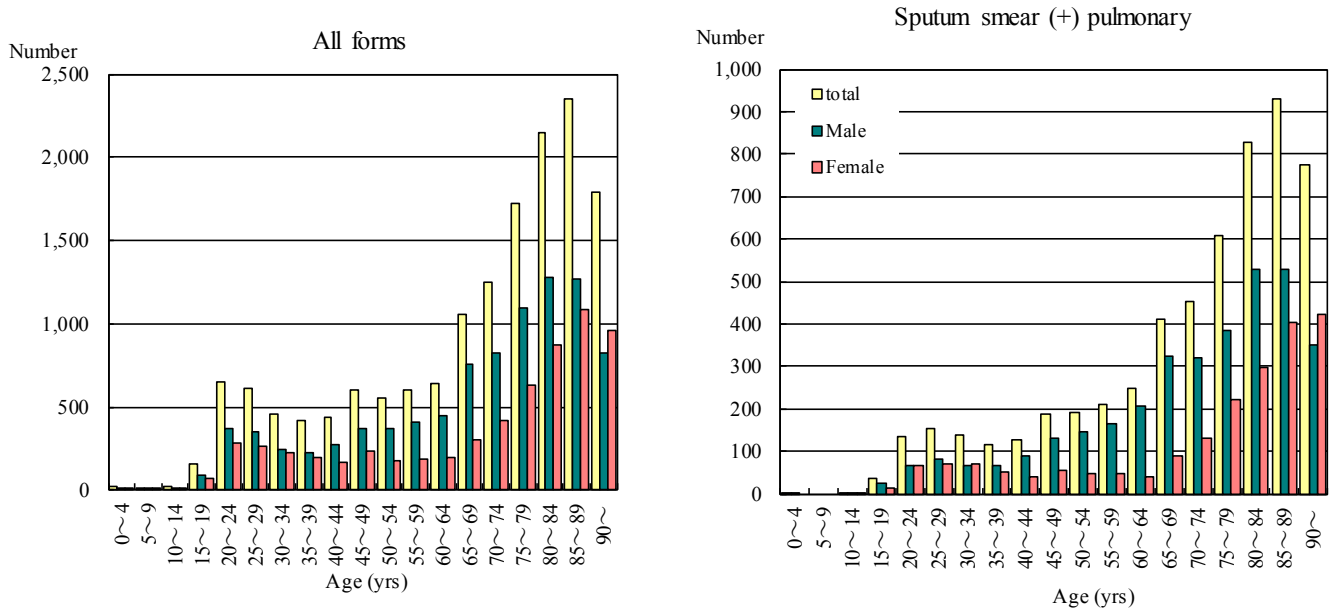


Figure 3. Notification rate of TB cases by sex and age, Japan, summation (Jan.-Dec.) 2018

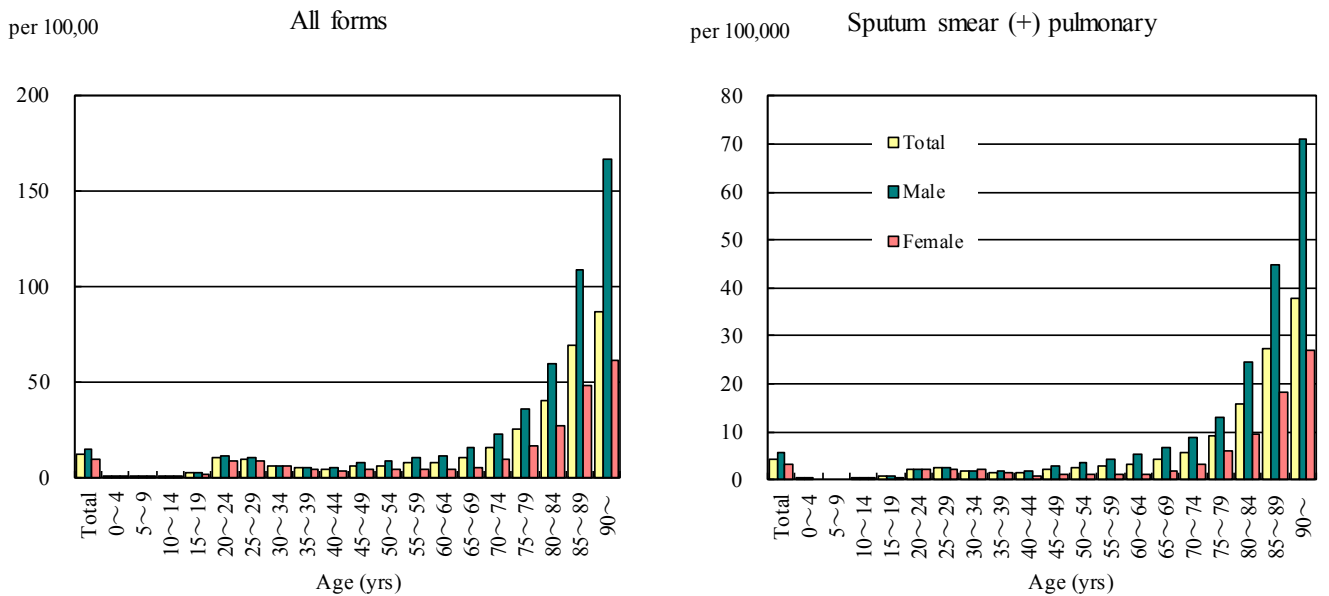


Figure 4. Notification rates of TB by prefecture, Japan, summation (Jan.-Dec.) 2018

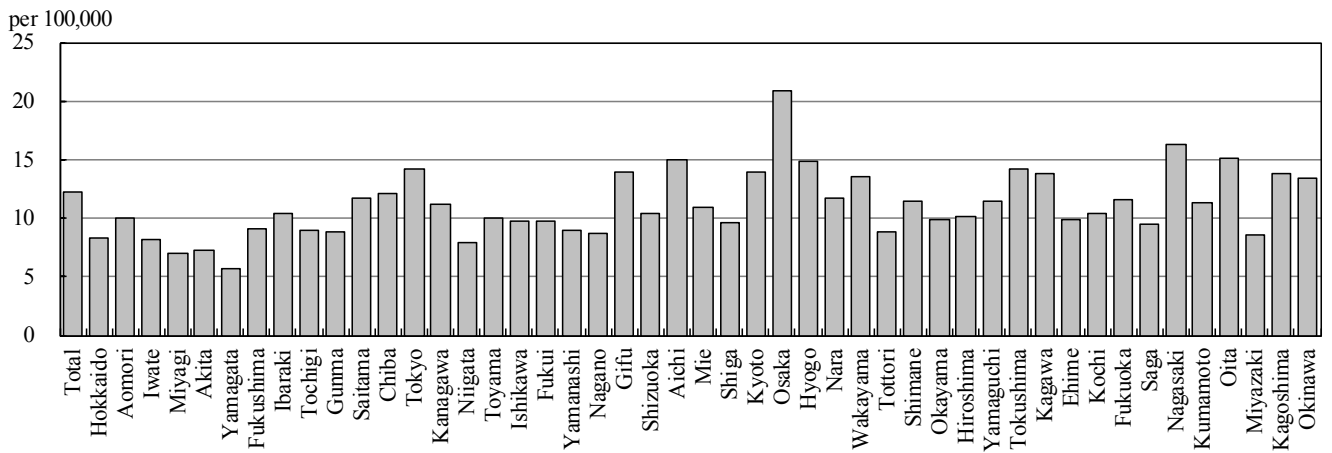


Figure 5. Notification rates of TB major city, Japan, summation (Jan.-Dec.) 2018

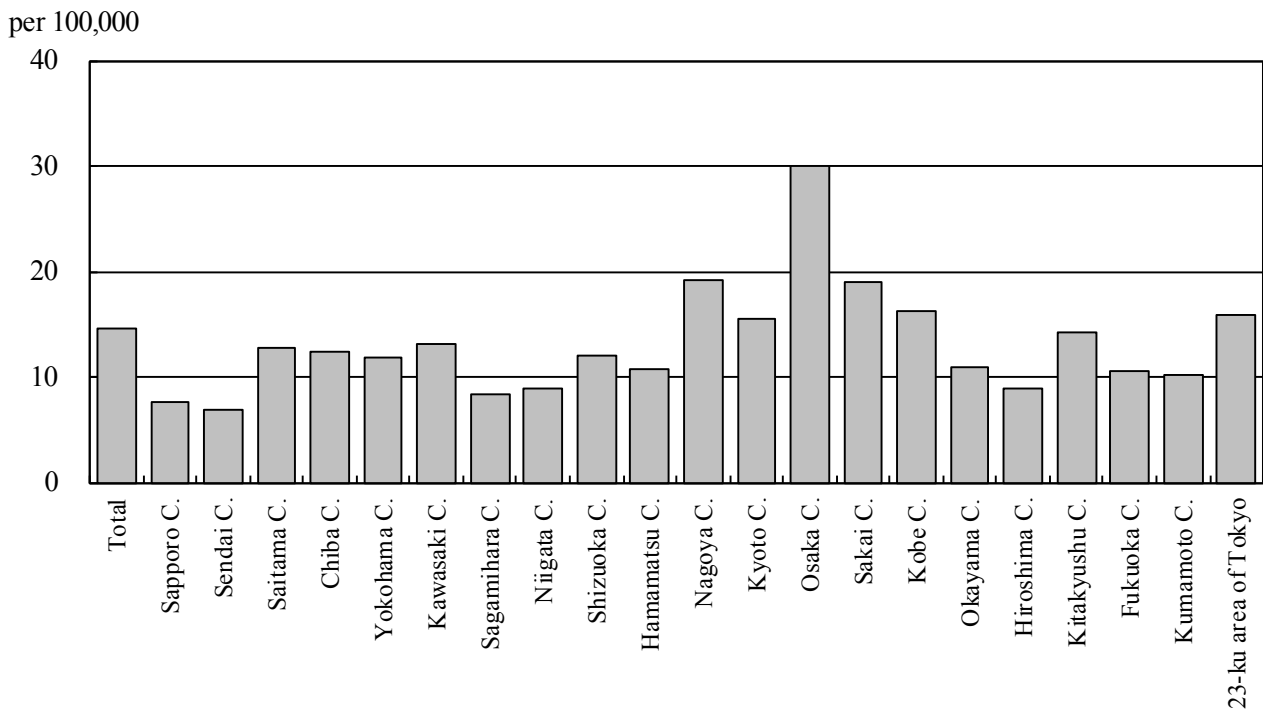


Figure 6. Number of LTBI, Japan, 2015-2018

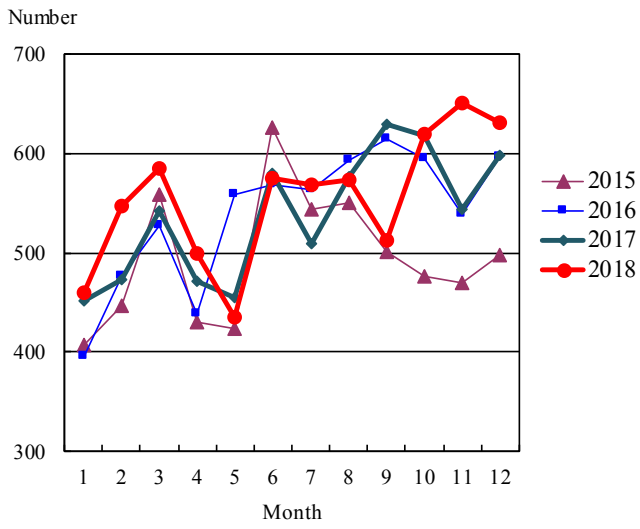


Figure 7. Number of LTBI by sex and age group, Japan, summation (Jan.-Dec.) 2018

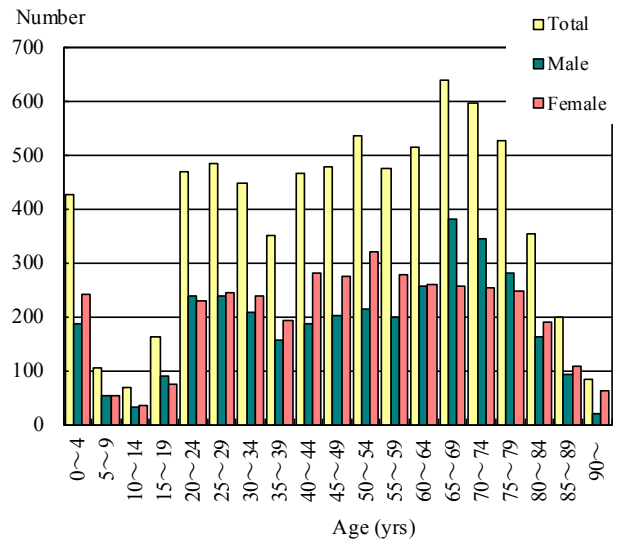


Table 1. Newly notified TB cases and rates by sex and age, Japan, 2018

	Dec.			Summation (Jan.-Dec.)			Notification rate (per 100,000)		
	Total	Male	Female	Total	Male	Female	Total	Male	Female
Total	1,258	747	511	15,509	9,230	6,279	12.2	15.0	9.7
0~4	5	3	2	25	17	8	0.5	0.7	0.3
5~9	0	0	0	6	3	3	0.1	0.1	0.1
10~14	2	0	2	21	12	9	0.4	0.4	0.3
15~19	6	4	2	156	87	69	2.6	2.8	2.4
20~24	45	21	24	651	371	280	10.5	11.6	9.3
25~29	45	29	16	611	347	264	9.7	10.8	8.6
30~34	32	15	17	462	241	221	6.5	6.7	6.3
35~39	32	15	17	421	227	194	5.3	5.7	5.0
40~44	46	27	19	437	274	163	4.6	5.7	3.5
45~49	48	29	19	599	368	231	6.3	7.7	4.9
50~54	54	40	14	549	371	178	6.7	9.1	4.4
55~59	46	32	14	600	409	191	7.9	10.8	5.0
60~64	57	38	19	644	450	194	8.3	11.7	4.9
65~69	81	57	24	1,061	757	304	10.7	15.8	5.9
70~74	105	71	34	1,249	826	423	16.1	22.8	10.3
75~79	147	101	46	1,723	1,093	630	25.6	36.3	16.9
80~84	169	101	68	2,151	1,279	872	40.6	59.3	27.8
85~89	207	105	102	2,354	1,272	1,082	69.3	108.4	48.7
90~	131	59	72	1,789	826	963	87.1	166.6	61.8

Temporary registrants = 47, Total of registrants and temporary registrants = 1,305

Rate: summation / (population*1/12)*100,000

Population: as of 1st Oct. 2017

Table 2. Newly notified sputum smear positive pulmonary TB cases and rates by sex and age, Japan, 2018

	Dec.			Summation (Jan.-Dec.)			Notification rate (per 100,000)		
	Total	Male	Female	Total	Male	Female	Total	Male	Female
Total	416	259	157	5,555	3,488	2,067	4.4	5.7	3.2
0~4	0	0	0	1	1	0	0.0	0.0	0.0
5~9	0	0	0	0	0	0	0.0	0.0	0.0
10~14	0	0	0	3	1	2	0.1	0.0	0.1
15~19	1	1	0	37	23	14	0.6	0.7	0.5
20~24	8	3	5	136	68	68	2.2	2.1	2.2
25~29	12	9	3	153	82	71	2.4	2.5	2.3
30~34	5	2	3	137	67	70	1.9	1.9	2.0
35~39	8	6	2	117	67	50	1.5	1.7	1.3
40~44	13	7	6	126	88	38	1.3	1.8	0.8
45~49	17	10	7	188	132	56	2.0	2.8	1.2
50~54	18	15	3	193	146	47	2.4	3.6	1.2
55~59	14	10	4	212	166	46	2.8	4.4	1.2
60~64	15	12	3	247	208	39	3.2	5.4	1.0
65~69	34	25	9	413	323	90	4.2	6.7	1.8
70~74	31	22	9	451	321	130	5.8	8.8	3.2
75~79	58	39	19	609	386	223	9.0	12.8	6.0
80~84	60	37	23	827	530	297	15.6	24.6	9.5
85~89	66	36	30	931	527	404	27.4	44.9	18.2
90~	56	25	31	774	352	422	37.7	71.0	27.1

Rate: summation / (population*1/12)*100,000

Population: as of 1st Oct. 2017

Table 3. Newly notified TB cases and rates by prefecture, Japan, 2018

	Dec.		Summation (Jan.-Dec.)		Notification rate (per 100,000)	
	Newly notified TB	Sputum smear (+)	Newly notified TB	Sputum smear (+)	Newly notified TB	Sputum smear (+)
Total	1,258	416	15,509	5,555	12.2	4.4
Hokkaido	33	9	439	145	8.3	2.7
Aomori	16	7	128	48	10.0	3.8
Iwate	9	4	103	40	8.2	3.2
Miyagi	13	3	163	61	7.0	2.6
Akita	5	1	72	26	7.2	2.6
Yamagata	1	0	63	21	5.7	1.9
Fukushima	6	1	172	59	9.1	3.1
Ibaraki	20	4	300	119	10.4	4.1
Tochigi	14	4	175	54	8.9	2.8
Gunma	18	4	173	47	8.8	2.4
Saitama	68	24	854	300	11.7	4.1
Chiba	64	25	753	264	12.1	4.2
Tokyo	160	51	1,951	733	14.2	5.3
Kanagawa	75	30	1,019	366	11.1	4.0
Niigata	18	2	178	55	7.9	2.4
Toyama	7	3	106	31	10.0	2.9
Ishikawa	9	3	112	32	9.8	2.8
Fukui	5	1	76	24	9.8	3.1
Yamanashi	4	3	74	20	9.0	2.4
Nagano	12	6	180	71	8.7	3.4
Gifu	25	8	279	105	13.9	5.2
Shizuoka	28	16	381	129	10.4	3.5
Aichi	105	37	1,129	386	15.0	5.1
Mie	23	4	196	74	10.9	4.1
Shiga	10	2	136	41	9.6	2.9
Kyoto	24	9	361	130	13.9	5.0
Osaka	172	59	1,845	715	20.9	8.1
Hyogo	55	21	817	316	14.8	5.7
Nara	18	2	158	61	11.7	4.5
Wakayama	7	2	128	47	13.5	5.0
Tottori	2	1	50	19	8.8	3.4
Shimane	3	1	78	24	11.4	3.5
Okayama	19	2	189	63	9.9	3.3
Hiroshima	18	8	288	111	10.2	3.9
Yamaguchi	6	0	158	45	11.4	3.3
Tokushima	6	1	106	39	14.3	5.2
Kagawa	12	3	134	38	13.9	3.9
Ehime	18	5	135	43	9.9	3.2
Kochi	3	0	74	21	10.4	2.9
Fukuoka	58	14	594	208	11.6	4.1
Saga	3	1	78	34	9.5	4.1
Nagasaki	18	8	220	69	16.2	5.1
Kumamoto	11	9	199	78	11.3	4.4
Oita	9	2	174	76	15.1	6.6
Miyazaki	8	3	94	41	8.6	3.8
Kagoshima	24	7	224	67	13.8	4.1
Okinawa	16	6	193	59	13.4	4.1

Rate: summation / (population*1/12)*100,000

Population: as of 1st Oct. 2017

Table 4. Newly notified TB cases and rates by major city, Japan, 2018

	Dec.		Summation (Jan.-Dec.)		Notification Rate (per 100,000)	
	Newly notified TB	Sputum Smear(+)	Newly notified TB	Sputum Smear(+)	Newly notified TB	Sputum Smear(+)
Total	429	136	5,409	1,971	14.6	5.3
Sapporo City	8	0	151	42	7.7	2.1
Sendai City	3	2	74	28	6.8	2.6
Saitama City	11	2	165	56	12.8	4.3
Chiba City	9	3	121	46	12.4	4.7
Yokohama City	33	9	440	146	11.8	3.9
Kawasaki City	10	4	196	66	13.0	4.4
Sagamihara City	4	3	60	26	8.3	3.6
Niigata City	10	2	72	21	9.0	2.6
Shizuoka City	6	2	85	36	12.0	5.1
Hamamatsu City	8	4	86	27	10.8	3.4
Nagoya City	39	11	442	161	19.1	7.0
Kyoto City	15	6	227	87	15.4	5.9
Osaka City	80	31	816	329	30.1	12.1
Sakai City	15	8	158	68	18.9	8.2
Kobe City	11	3	248	70	16.2	4.6
Okayama City	8	0	78	21	11.0	3.0
Hiroshima City	10	3	107	37	8.9	3.1
Kitakyushu City	8	2	136	44	14.3	4.6
Fukuoka City	18	4	164	63	10.5	4.0
Kumamoto City	3	1	76	31	10.3	4.2
23-ku area of Tokyo	120	36	1,507	566	16.0	6.0

Rate: summation / (population*1/12)*100,000

Population: as of 1st Oct. 2017

Major city: city with a population of one million or more.

Table 4 is a re-count of Table 3.

Table 5. LTBI cases and rates by sex and age, Japan, 2018

	Dec.			Summation (Jan.-Dec.)			(Ratio) LTBI/Newly notified cases		
	Total	Male	Female	Total	Male	Female	Total	Male	Female
Total	631	314	317	7,363	3,538	3,825	0.5	0.4	0.6
0~4	53	19	34	426	185	241	17.0	10.9	30.1
5~9	11	5	6	104	52	52	17.3	17.3	17.3
10~14	6	2	4	67	33	34	3.2	2.8	3.8
15~19	12	4	8	163	90	73	1.0	1.0	1.1
20~24	24	16	8	467	237	230	0.7	0.6	0.8
25~29	29	16	13	483	239	244	0.8	0.7	0.9
30~34	30	15	15	448	209	239	1.0	0.9	1.1
35~39	28	14	14	349	156	193	0.8	0.7	1.0
40~44	37	17	20	464	185	279	1.1	0.7	1.7
45~49	36	17	19	476	202	274	0.8	0.5	1.2
50~54	52	18	34	535	215	320	1.0	0.6	1.8
55~59	52	30	22	475	199	276	0.8	0.5	1.4
60~64	47	27	20	514	256	258	0.8	0.6	1.3
65~69	54	31	23	638	381	257	0.6	0.5	0.8
70~74	56	30	26	595	343	252	0.5	0.4	0.6
75~79	40	24	16	526	280	246	0.3	0.3	0.4
80~84	41	18	23	352	163	189	0.2	0.1	0.2
85~89	15	8	7	199	92	107	0.1	0.1	0.1
90~	8	3	5	82	21	61	0.0	0.0	0.1

LTBI: latent TB Infection

Number of LTBI is not included in the newly notified TB patients

Table 6. LTBI cases and rates by prefecture, Japan, 2018

	Dec.	Summation (Jan.-Dec.)	
	LTBI	LTBI	(Ratio) LTBI /new TB
Total	631	7,363	0.47
Hokkaido	20	210	0.48
Aomori	12	82	0.64
Iwate	13	73	0.71
Miyagi	16	183	1.12
Akita	4	61	0.85
Yamagata	0	21	0.33
Fukushima	2	59	0.34
Ibaraki	14	157	0.52
Tochigi	5	54	0.31
Gunma	5	66	0.38
Saitama	34	443	0.52
Chiba	41	345	0.46
Tokyo	77	1,014	0.52
Kanagawa	46	533	0.52
Niigata	6	116	0.65
Toyama	1	84	0.79
Ishikawa	4	52	0.46
Fukui	2	41	0.54
Yamanashi	1	34	0.46
Nagano	15	118	0.66
Gifu	7	97	0.35
Shizuoka	11	120	0.31
Aichi	27	407	0.36
Mie	3	74	0.38
Shiga	3	81	0.60
Kyoto	17	194	0.54
Osaka	83	791	0.43
Hyogo	27	319	0.39
Nara	7	72	0.46
Wakayama	0	45	0.35
Tottori	2	19	0.38
Shimane	3	29	0.37
Okayama	8	137	0.72
Hiroshima	17	157	0.55
Yamaguchi	2	54	0.34
Tokushima	2	28	0.26
Kagawa	2	49	0.37
Ehime	3	35	0.26
Kochi	1	21	0.28
Fukuoka	38	303	0.51
Saga	3	31	0.40
Nagasaki	5	73	0.33
Kumamoto	5	69	0.35
Oita	14	97	0.56
Miyazaki	2	59	0.63
Kagoshima	8	99	0.44
Okinawa	13	157	0.81

LTBI: Latent TB Infection

Number of LTBI is not included in the newly notified TB patients.

Table 7. LTBI cases and rates by major city, Japan, 2018

	Dec.	Summation (Jan.-Dec.)	
	LTBI	LTBI	(Ratio) LTBI / new TB
Total	239	2,586	0.48
Sapporo City	12	96	0.64
Sendai City	10	132	1.78
Saitama City	6	45	0.27
Chiba City	8	47	0.39
Yokohama City	17	171	0.39
Kawasaki City	16	118	0.60
Sagamihara City	0	18	0.30
Niigata City	3	45	0.63
Shizuoka City	0	19	0.22
Hamamatsu City	3	34	0.40
Nagoya City	6	132	0.30
Kyoto City	8	104	0.46
Osaka City	50	352	0.43
Sakai City	3	53	0.34
Kobe City	5	105	0.42
Okayama City	4	62	0.79
Hiroshima City	3	29	0.27
Kitakyushu City	20	94	0.69
Fukuoka City	10	81	0.49
Kumamoto City	3	30	0.39
23-ku area of Tokyo	52	819	0.54

LTBI: Latent TB Infection

Number of LTBI is not included in the newly notified TB patients,

Major city: city with a population of one million or more

Table 7 is a re-count of Table 6