

## 【Childhood】

Table 1 Number and rates of childhood tuberculosis patients and specific extra-pulmonary tuberculosis, 1965–2018

Year	Newly notified tuberculosis aged 0–14 yrs		No. of meningeal tuberculosis		No. of miliary tuberculosis	
	Number	Rate	0–14 yrs	0–4 yrs (Rate)	0–14 yrs	0–4 yrs (Rate)
1965	44,180	175.6	—	—	—	—
1970	18,197	73.4	—	—	—	—
1975	4,905	18.0	28	22 (0.221)	—	—
1980	1,893	6.9	22	14 (0.164)	—	—
1985	1,088	4.2	—	—	—	—
1990	518	2.3	9	4 (0.061)	10	8 (0.122)
1995	340	1.7	8	8 (0.136)	8	8 (0.136)
2000	220	1.2	7	4 (0.069)	3	3 (0.052)
2005	117	0.7	3	1 (0.018)	3	1(0.018)
2010	89	0.5	0	0	0	0
2011	84	0.5	1	0	2	1(0.019)
2012	63	0.4	1	1(0.019)	0	0
2013	66	0.4	2	2(0.038)	0	0
2014	49	0.3	5	2(0.038)	2	1(0.019)
2015	51	0.3	1	1(0.020)	1	0
2016	59	0.4	2	2(0.040)	1	1(0.020)
2017	59	0.4	2	1(0.020)	3	3(0.061)
2018	51	0.3	1	1(0.021)	1	1(0.021)

Extra-pulmonary tuberculosis: Cases are counted independently.

Rate: per 100,000

—: Not available

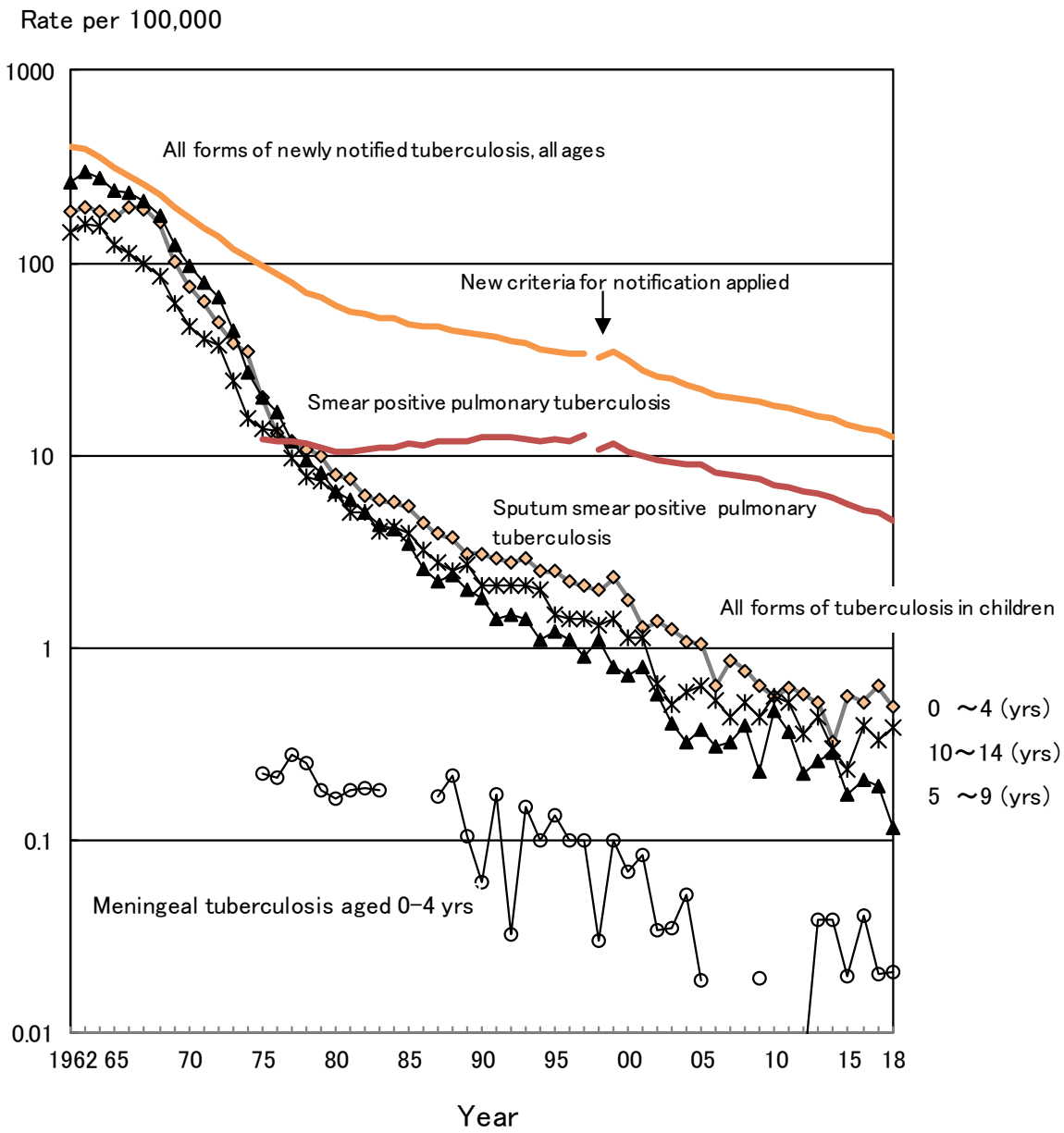


Fig. 1 Trend of childhood tuberculosis notification rates, per 100,000 population, 1962–2018

Table 2 Number of newly notified childhood tuberculosis patients by age and mode of detection, 2018

	Age (yrs)															計 Total
	0	1	2	3	4	5	6	7	8	9	10	11	12	13	14	
School mass-investigation	0	0	0	0	0	0	1	0	0	0	1	0	1	0	1	4
Family contact investigation	7	2	2	1	1	0	0	0	1	1	3	1	2	1	4	26
Other contact investigation	0	0	0	2	0	0	0	0	1	1	0	0	0	0	1	5
At clinics/hospitals (with symptoms)	5			1							1	1		2	2	12
Others	2	0	0	1	0	1	0	0	0	0	0	0	0	0	0	4
<b>Total</b>	<b>14</b>	<b>2</b>	<b>2</b>	<b>5</b>	<b>1</b>	<b>1</b>	<b>1</b>		<b>2</b>	<b>2</b>	<b>5</b>	<b>2</b>	<b>3</b>	<b>3</b>	<b>8</b>	<b>51</b>

Table 3 Proportion of BCG vaccinated cases among newly notified childhood tuberculosis patients and LTBI cases, 2018

	Age in years										0-4 Total	5-9	10-14	計 Total
	Age in months					0	1	2	3	4				
	0-2	3-5	6-8	9-11	Total									
Tuberculosis cases	4	2	6	2	14	2	2	5	1	24	6	21	51	
BCG vaccinated	0	0	5	1	6	1	2	2	1	12	2	6	20	
BCG not vaccinated	4	1	0	0	5	0	0	0	0	5	0	1	6	
BCG unknown	0	1	1	1	3	1	0	3	0	7	4	14	25	
BCG vaccinated (%)*	0.0	0.0	100.0	100.0	54.5	100.0	100.0	100.0	100.0	70.6	100.0	85.7	76.9	
LTBI	22	62	154	28	266	41	41	45	32	425	103	69	597	
BCG vaccinated	0	29	98	19	146	33	25	28	20	252	49	31	332	
BCG not vaccinated	12	19	8	0	39	1	1	2	3	46	4	0	50	
BCG unknown	10	14	48	9	81	7	15	15	9	127	50	38	215	
BCG vaccinated (%)*	0.0	60.4	92.5	100.0	78.9	97.1	96.2	93.3	87.0	84.6	92.5	100.0	86.9	

LTBI : Latent Tuberculosis Infection

\*%: Proportion of BCG vaccinated cases among all TB/LTBI cases excluding BCG unknown

Previous table Trend of newly notified childhood TB patients by age and calendar year, 1998–2018

Year	Age (yrs)															計 Total
	0	1	2	3	4	5	6	7	8	9	10	11	12	13	14	
1998	31	39	15	18	16	12	18	14	13	10	7	7	29	18	27	274
1999	43	35	24	23	9	10	15	8	7	10	8	9	27	27	25	280
2000	29	27	19	14	14	8	10	13	5	7	14	11	21	12	16	220
2001	27	18	14	9	7	4	14	11	11	8	8	4	23	18	19	195
2002	30	21	14	12	3	9	8	5	6	6	2	3	14	15	7	155
2003	23	15	17	5	12	9	5	4	1	5	4	3	4	10	10	127
2004	20	18	9	5	10	5	2	3	5	4	3	4	12	6	11	117
2005	23	11	5	13	4	4	3	7	5	3	6	5	7	13	8	117
2006	9	6	8	6	6	6	3	3	2	4	3	4	3	13	9	85
2007	21	5	7	12	2	6	5	2	4	2	2	4	4	7	9	92
2008	11	14	11	4	1	2	6	2	5	8	2	5	7	8	9	95
2009	15	8	6	3	2	4	4	1	3	1	6	1	5	8	6	73
2010	10	6	5	5	4	6	6	8	3	3	5	4	4	7	13	89
2011	5	7	6	7	8	3	7	3	3	4	6	4	5	5	11	84
2012	8	6	6	7	3	2	2	3	1	4	3	2	3	7	6	63
2013	7	4	5	4	7	3	3	2	1	5	3	4	7	3	8	66
2014	5	8	–	2	2	1	6	1	3	4	–	3	3	7	4	49
2015	13	5	5	2	4	1	–	–	6	2	–	4	4	3	2	51
2016	10	8	1	2	5	1	2	–	4	4	3	3	–	6	10	59
2017	12	6	6	2	5	3	2	2	–	3	2	4	2	5	5	59
2018	14	2	2	5	1	1	1	–	2	2	5	2	3	3	8	51

School mass-examination was revised in 2003.

Upper-limitation age of BCG vaccination was changed from 4 years to 6 months, with introduction of direct vaccination policy in 2005.

Previous table Number of prefectures by number of childhood TB patients, 1980–2018

Year	Number of childhood TB patients							Total
	0	1	2~4	5~9	10~14	15~19	20+(cases)	
1980	0	0	1	6	7	4	29	47
1985	0	0	5	11	10	2	19	47
1990	0	3	13	11	8	2	10	47
1995	3	6	14	13	4	2	5	47
2000	9	8	13	10	3	1	3	47
2005	17	8	13	7	2	0	0	47
2006	19	13	8	6	1	0	0	47
2007	17	12	11	5	2	0	0	47
2008	14	12	16	4	1	0	0	47
2009	27	6	8	4	2	0	0	47
2010	15	14	14	3	0	0	1	47
2011	19	11	12	4	0	0	1	47
2012	22	11	11	3	0	0	0	47
2013	19	14	9	5	0	0	0	47
2014	22	14	9	2	0	0	0	47
2015	25	10	9	3	0	0	0	47
2016	25	10	7	5	0	0	0	47
2017	25	8	11	2	1	0	0	47
2018	26	12	6	2	1	0	0	47

**[Elderly]**

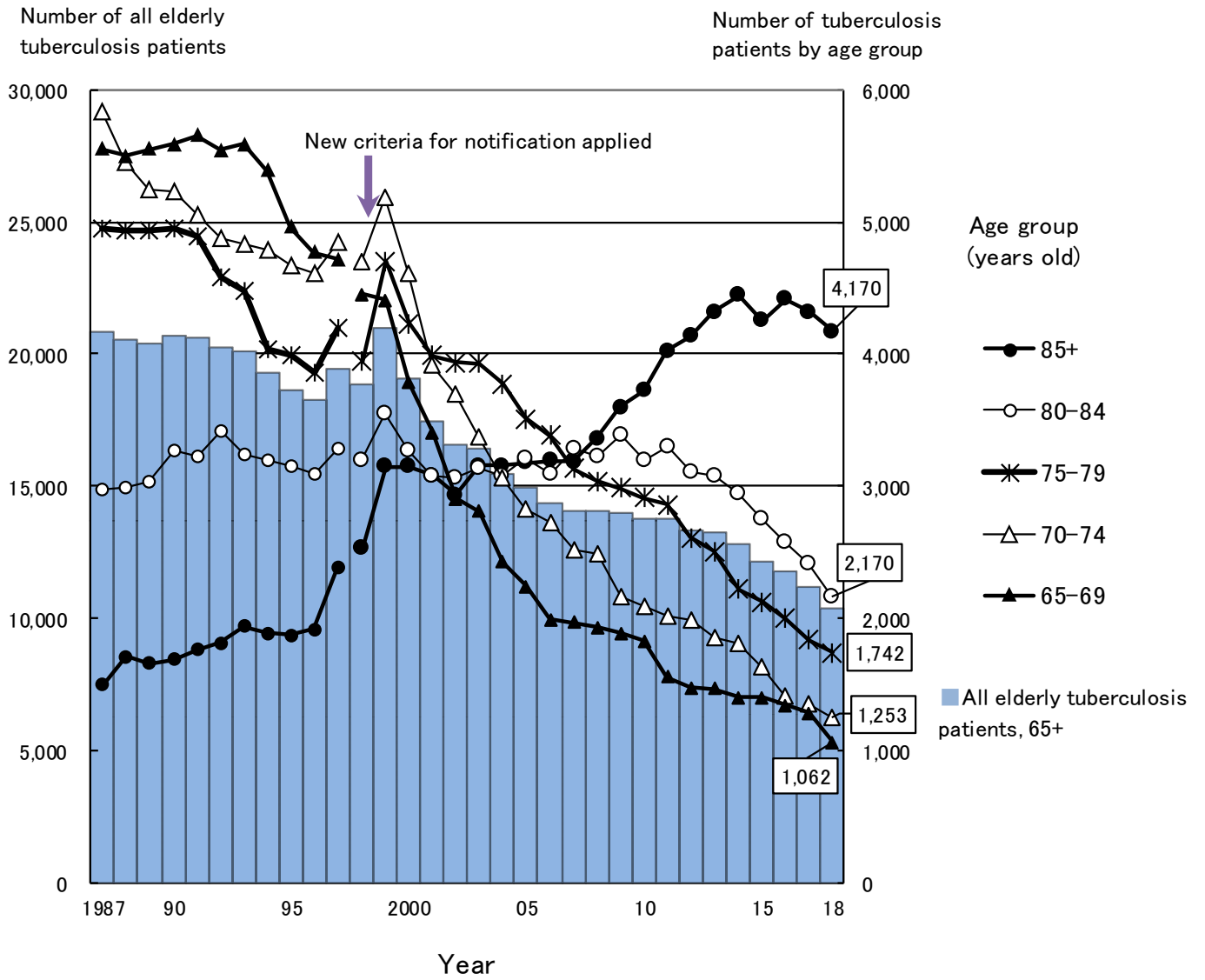


Fig.2 Annual trend of the number of newly notified elderly tuberculosis patients by age group, 1987–2018

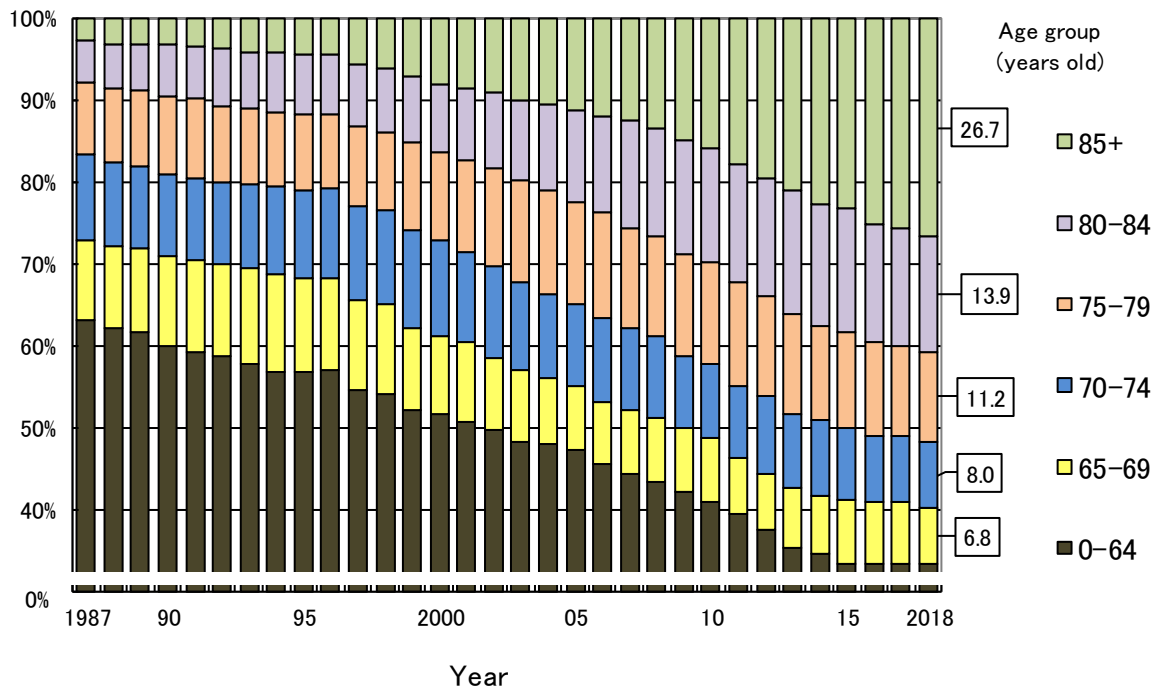


Fig.3 Annual trend of the proportion of elderly tuberculosis patients among all newly notified tuberculosis patients, 1987–2018

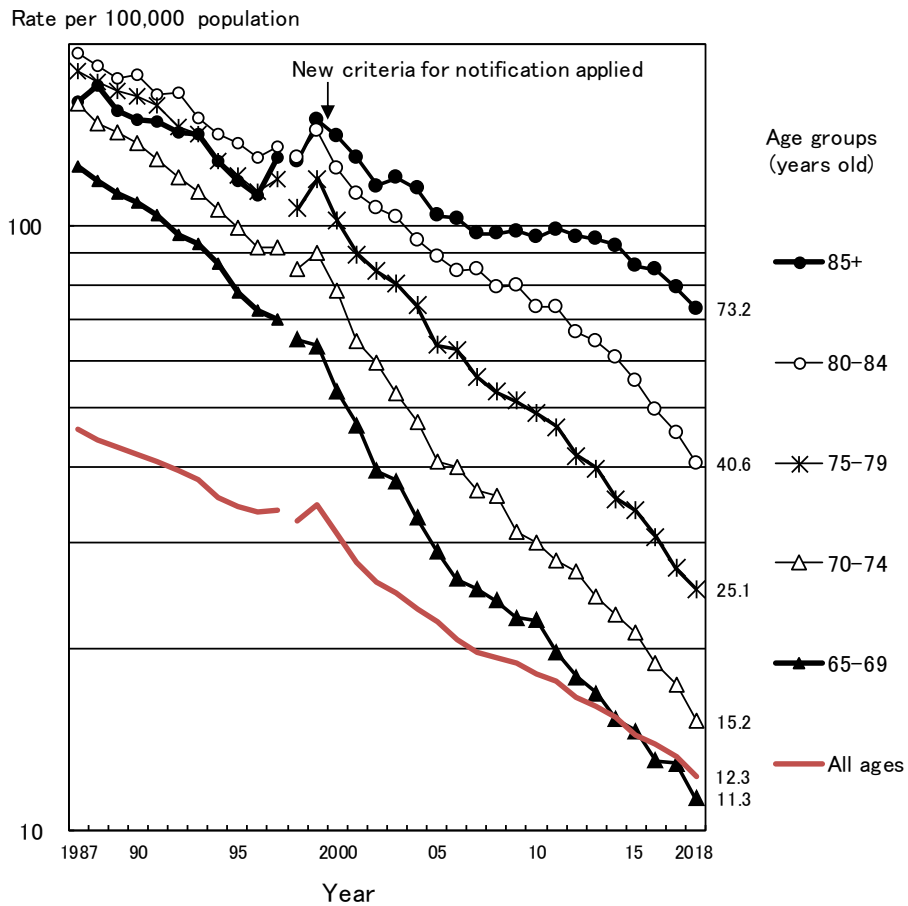


Fig.4 Annual trend of elderly tuberculosis notification rates (per 100,000 population) among the elderly population, by age group, all forms, 1987–2018

Table 4 Comparison of epidemiological indicators of newly notified tuberculosis patients by sex and age group, 2018

		Age group (years old)					
		All ages	Youth and middle-aged	The elderly			
			15-64	all 65+	65-74	75-84	85+
Number of newly notified tuberculosis patients (all forms, n)	Total	15,590	5,142	10,397	2,315	3,912	4,170
	Male	9,263	3,144	6,087	1,587	2,391	2,109
	Female	6,327	1,998	4,310	728	1,521	2,061
Tuberculosis notification rate (all forms, per 100,000 population)	Total	12.3	6.8	29.2	13.2	31.9	73.2
	Male	15.1	8.2	39.4	18.9	45.2	119.7
	Female	9.7	5.4	21.4	7.9	21.8	52.4
Number of newly notified extra-pulmonary tuberculosis patients (n)	Total	3,557	964	2,584	540	1,036	1,008
	Male	1,850	515	1,328	307	562	459
	Female	1,707	449	1,256	233	474	549
Proportion of extra-pulmonary tuberculosis patients among newly notified tuberculosis patients (%)	Total	22.8	18.7	24.9	23.3	26.5	24.2
	Male	20.0	16.4	21.8	19.3	23.5	21.8
	Female	27.0	22.5	29.1	32.0	31.2	26.6
Number of newly notified pulmonary tuberculosis patients (n)	Total	12,033	4,178	7,813	1,775	2,876	3,162
	Male	7,413	2,629	4,759	1,280	1,829	1,650
	Female	4,620	1,549	3,054	495	1,047	1,512
Proportion of pulmonary tuberculosis patients among newly notified tuberculosis patients (%)	Total	77.2	81.3	75.1	76.7	73.5	75.8
	Male	80.0	83.6	78.2	80.7	76.5	78.2
	Female	73.0	77.5	70.9	68.0	68.8	73.4
Proportion of bacteriologically positive tuberculosis patients among all pulmonary tuberculosis patients (%)	Total	86.3	76.8	91.7	85.7	91.3	95.4
	Male	86.6	78.4	91.5	87.0	91.5	95.1
	Female	85.8	74.2	92.0	82.4	91.0	95.8
Proportion of sputum-smear positive pulmonary tuberculosis patients among all pulmonary tuberculosis patients (%)	Total	48.0	38.2	53.5	50.3	52.8	55.9
	Male	49.0	41.2	53.5	52.0	52.9	55.3
	Female	46.5	33.2	53.4	45.7	52.6	56.5
Proportion of cavitary pulmonary tuberculosis patients among all pulmonary tuberculosis patients (%)	Total	28.8	30.6	28.0	34.4	27.7	24.6
	Male	32.3	35.1	30.8	37.7	30.3	26.1
	Female	23.3	23.0	23.5	25.7	23.1	23.0
Proportion of far-advanced cavitary pulmonary tuberculosis patients among all pulmonary tuberculosis patients (%)	Total	2.1	2.3	2.0	3.2	1.7	1.7
	Male	2.5	2.9	2.3	3.8	1.9	1.6
	Female	1.4	1.2	1.6	1.6	1.3	1.7
Proportion of symptomatic pulmonary tuberculosis patients upon diagnosis among all pulmonary tuberculosis (%)	Total	72.1	57.9	79.9	71.8	78.4	85.8
	Male	71.7	58.0	79.6	72.9	78.2	86.3
	Female	72.7	57.8	80.4	69.1	78.7	85.3
Proportion of pulmonary tuberculosis patients with only symptoms other than respiratory symptoms among symptomatic pulmonary tuberculosis patients (%)	Total	25.0	20.4	26.8	21.3	26.5	29.6
	Male	23.2	20.0	24.6	20.7	24.3	27.4
	Female	27.8	21.2	30.3	22.8	30.5	32.1
Proportion of patient delay of two months or more among symptomatic pulmonary tuberculosis patients (%)*	Total	20.6	26.4	18.4	23.4	18.7	15.5
	Male	21.3	27.9	18.7	23.0	19.1	15.3
	Female	19.5	24.0	17.9	24.7	18.1	15.8
Proportion of doctor delay of one month or more among symptomatic pulmonary tuberculosis patients (%)*	Total	22.0	21.5	22.2	24.0	22.5	21.0
	Male	21.5	18.3	22.8	22.8	22.4	23.3
	Female	22.7	26.9	21.2	27.5	22.6	18.4
Proportion of total delay of three months or more among symptomatic pulmonary tuberculosis patients (%)*	Total	20.7	27.0	18.2	25.4	18.0	14.8
	Male	20.4	25.3	18.4	24.0	17.6	15.3
	Female	21.1	29.9	17.8	29.2	18.6	14.1
Proportion of tuberculosis patients detected as out-patient for other diseases among newly notified tuberculosis patients (%)	Total	11.5	5.9	14.4	17.2	16.7	10.6
	Male	12.7	5.4	16.6	18.0	18.4	13.4
	Female	9.8	6.7	11.2	15.4	14.0	7.7
Proportion of tuberculosis patients detected as in-patient for other diseases among newly notified tuberculosis patients (%)	Total	14.9	4.0	20.3	13.7	19.9	24.4
	Male	14.1	4.4	19.3	13.9	19.5	23.0
	Female	15.9	3.5	21.8	13.3	20.4	25.8

Subjects: \* Excluding the patients of unknown delays

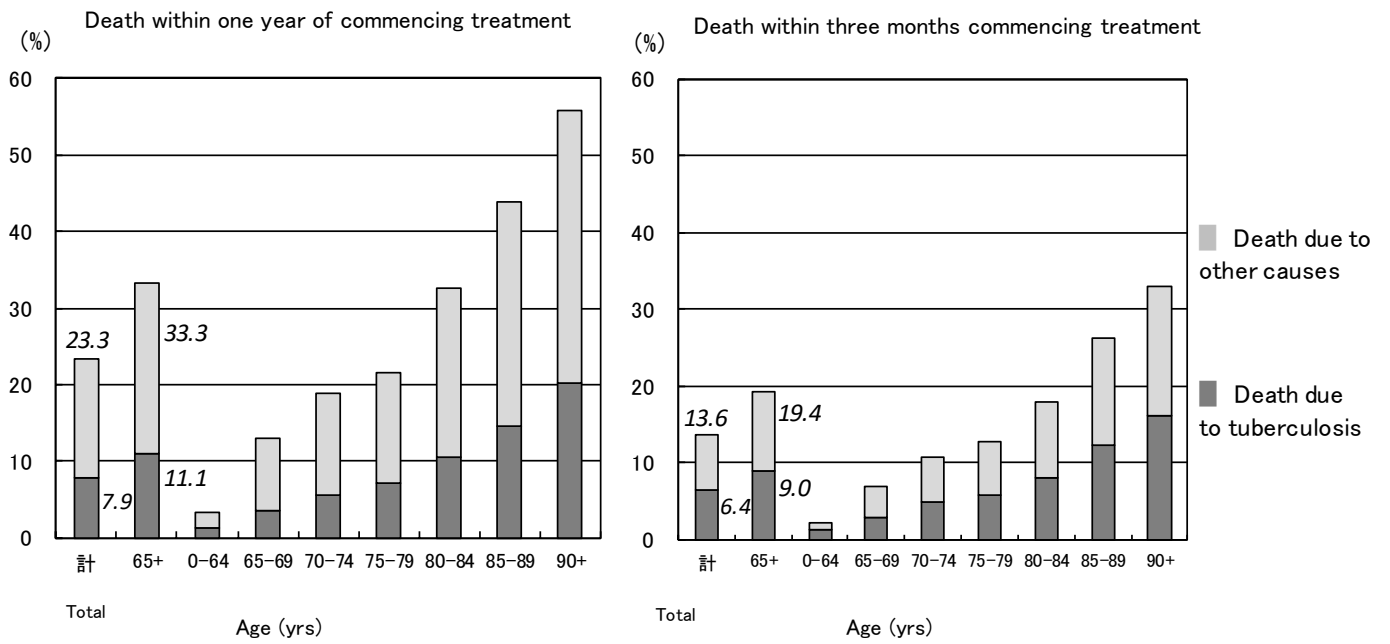


Fig.5 Proportion of death among newly notified tuberculosis patients in 2017 by age group, cause of death and duration till death

\* The date when tuberculosis diagnosis was made was used as the date treatment was commenced for those who died before the start of treatment.



Previous table Number and proportion of elderly TB by prefecture and city, 2018

65+ (yrs)			85+ (yrs)		
Area	<i>n</i>	%	Area	<i>n</i>	%
Japan	10,397	66.7	Japan	4,170	26.7
Yamagata	55	84.6	Saga	39	48.8
Tokushima	89	84.0	Yamagata	31	47.7
Kouchi	62	83.8	Tokushima	46	43.4
Akita	61	82.4	Ishikawa	44	40.0
Nagasaki	183	82.4	Kumamoto	50	40.0
Niigata city	59	81.9	Gifu	111	39.8
Aomori	103	81.1	Oita	67	39.6
Kumamoto	101	80.8	Nagasaki	88	39.6
Shizuoka city	67	80.7	Yamaguchi	63	39.4
Kagawa	107	80.5	Akita	28	37.8
Miyazaki	78	80.4	Kagawa	50	37.6
Hokkaido	234	79.1	Niigata city	27	37.5
Saga	63	78.8	Shimane	29	37.2
Ehime	106	78.5	Miyazaki	36	37.1
Oita	132	78.1	Nagano	69	37.1
.	.	.	.	.	.
Fukuoka city	100	60.6	Saitama city	33	20.4
Yokohama city	264	59.9	Sagamihara city	12	20.0
Chiba city	68	56.2	Sakai city	30	19.2
Kawasaki city	109	55.6	Chiba	121	19.1
Saitama	382	55.0	Tokyo	372	18.9
Chiba	344	54.3	Kawasaki city	35	17.9
Sendai city	40	53.3	Saitama	115	16.6
Saitama city	86	53.1	Chiba city	20	16.5
Tokyo	1,038	52.7	Tokyo 23wards	244	16.0
Tokyo 23wards	752	49.3	Osaka city	120	15.0

Descending order by proportion of elderly TB patients