

【Case finding】

Table1 Proportion of mode of detection among newly notified tuberculosis patients, 2007–2018

Year	Newly notified TB patients	Individual medical checkup			Mass screening								Contact examination				Medical institutions						Others		Unknown		
					Schools		Residents		Employees		Facilities		Family		Others		Outpatients with TB symptoms(*1)		Inpatients with other diseases		Outpatients with other diseases						
					n	%	n	%	n	%	n	%	n	%	n	%	n	%	n	%	n	%					n
2007	25,311	537	2.1	217	0.9	636	2.5	1,931	7.6	145	0.6	355	1.4	370	1.5	16,997	67.2	2,031	8.0	1,611	6.4	340	1.3	141	0.6		
2008	24,760	639	2.6	195	0.8	486	2.0	1,877	7.6	144	0.6	325	1.3	410	1.7	15,347	62.0	2,681	10.8	2,100	8.5	316	1.3	240	1.0		
2009	24,170	611	2.5	197	0.8	550	2.3	1,749	7.2	136	0.6	324	1.3	311	1.3	14,864	61.5	2,752	11.4	2,220	9.2	301	1.2	155	0.6		
2010	23,261	507	2.2	244	1.0	544	2.3	1,618	7.0	128	0.6	313	1.3	350	1.5	13,901	59.8	2,792	12.0	2,305	9.9	333	1.4	226	1.0		
2011	22,681	470	2.1	188	0.8	497	2.2	1,531	6.8	126	0.6	354	1.6	482	2.1	13,177	58.1	2,916	12.9	2,515	11.1	330	1.5	95	0.4		
2012	21,283	409	1.9	163	0.8	498	2.3	1,424	6.7	121	0.6	315	1.5	374	1.8	12,284	57.7	2,941	13.8	2,312	10.9	357	1.7	85	0.4		
2013	20,495	413	2.0	172	0.8	455	2.2	1,246	6.1	89	0.4	314	1.5	333	1.6	11,978	58.4	2,745	13.4	2,306	11.3	336	1.6	108	0.5		
2014	19,615	344	1.8	201	1.0	404	2.1	1,221	6.2	92	0.5	303	1.5	333	1.7	11,441	58.3	2,591	13.2	2,210	11.3	328	1.7	147	0.7		
2015	18,280	319	1.7	192	1.1	359	2.0	1,147	6.3	78	0.4	248	1.4	263	1.4	10,556	57.7	2,630	14.4	2,043	11.2	144	0.8	127	0.7		
2016	17,625	319	1.8	250	1.4	355	2.0	1,056	6.0	98	0.6	211	1.2	409	2.3	10,073	57.2	2,471	14.0	1,971	11.2	146	0.8	98	0.6		
2017	16,789	331	2.0	259	1.5	336	2.0	1,088	6.5	70	0.4	256	1.5	323	1.9	9,338	55.6	2,528	15.1	1,900	11.3	150	0.9	73	0.4		
2018	15,590	290	1.9	226	1.4	288	1.8	1,077	6.9	74	0.5	239	1.5	314	2.0	8,617	55.3	2,317	14.9	1,798	11.5	139	0.9	56	0.4		
2018																											
Age group																											
0~9	30	0	0.0	1	3.3	0	0.0	0	0.0	0	0.0	15	50.0	4	13.3	6	20.0	0	0.0	0	0.0	3	10.0	0	0.0		
10~19	179	3	1.7	40	22.3	0	0.0	9	5.0	0	0.0	25	14.0	18	10.1	69	38.5	2	1.1	3	1.7	0	0.0	0	0.0		
20~29	1,273	25	2.0	168	13.2	3	0.2	304	23.9	5	0.4	11	0.9	92	7.2	566	44.5	17	1.3	17	1.3	7	0.5	4	0.3		
30~39	885	27	3.1	15	1.7	6	0.7	206	23.3	3	0.3	29	3.3	26	2.9	499	56.4	17	1.9	36	4.1	4	0.5	7	0.8		
40~49	1,034	32	3.1	1	0.1	13	1.3	240	23.2	3	0.3	30	2.9	44	4.3	532	51.5	41	4.0	70	6.8	11	1.1	2	0.2		
50~59	1,150	42	3.7	0	0.0	14	1.2	169	14.7	6	0.5	23	2.0	47	4.1	634	55.1	77	6.7	103	9.0	14	1.2	8	0.7		
60~69	1,704	50	2.9	1	0.1	39	2.3	127	7.5	7	0.4	39	2.3	34	2.0	918	53.9	182	10.7	251	14.7	29	1.7	11	0.6		
70~79	2,995	52	1.7	0	0.0	114	3.8	22	0.7	12	0.4	27	0.9	26	0.9	1,649	55.1	511	17.1	528	17.6	25	0.8	12	0.4		
80~89	4,534	45	1.0	0	0.0	78	1.7	0	0.0	21	0.5	30	0.7	16	0.4	2,638	58.2	1,012	22.3	637	14.0	31	0.7	7	0.2		
90~	1,806	14	0.8	0	0.0	21	1.2	0	0.0	17	0.9	10	0.6	7	0.4	1,106	61.2	458	25.4	153	8.5	15	0.8	5	0.3		

TB: tuberculosis

TB symptoms: Respiratory symptoms such as cough, sputum expectoration, bloody sputum, and hemoptysis; and other symptoms such as wheezing, chest pain, back pain, dyspnea, fever, night sweating, fatigue tendency, and weight

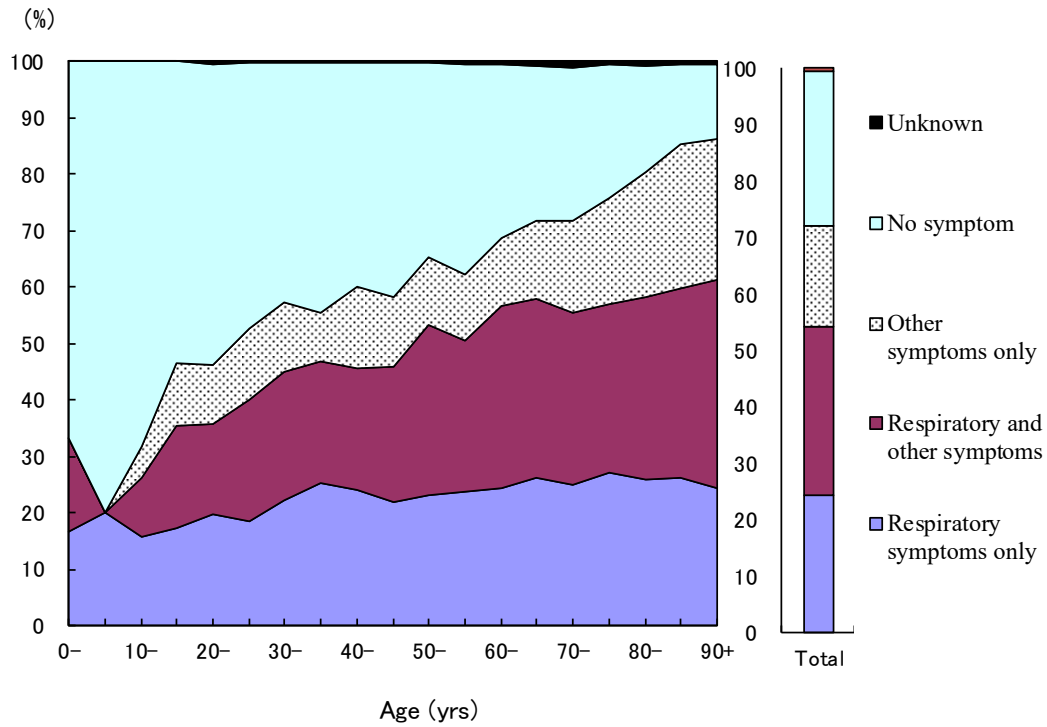


Fig.1 Proportion of symptoms among newly notified pulmonary tuberculosis patients by 5- years age group, in 2018
 Respiratory symptoms include cough, sputum expectoration, bloody sputum, and hemoptysis. Other symptoms include wheezing, chest pain, back pain, dyspnea, fever, night sweating, fatigue tendency, and weight loss.

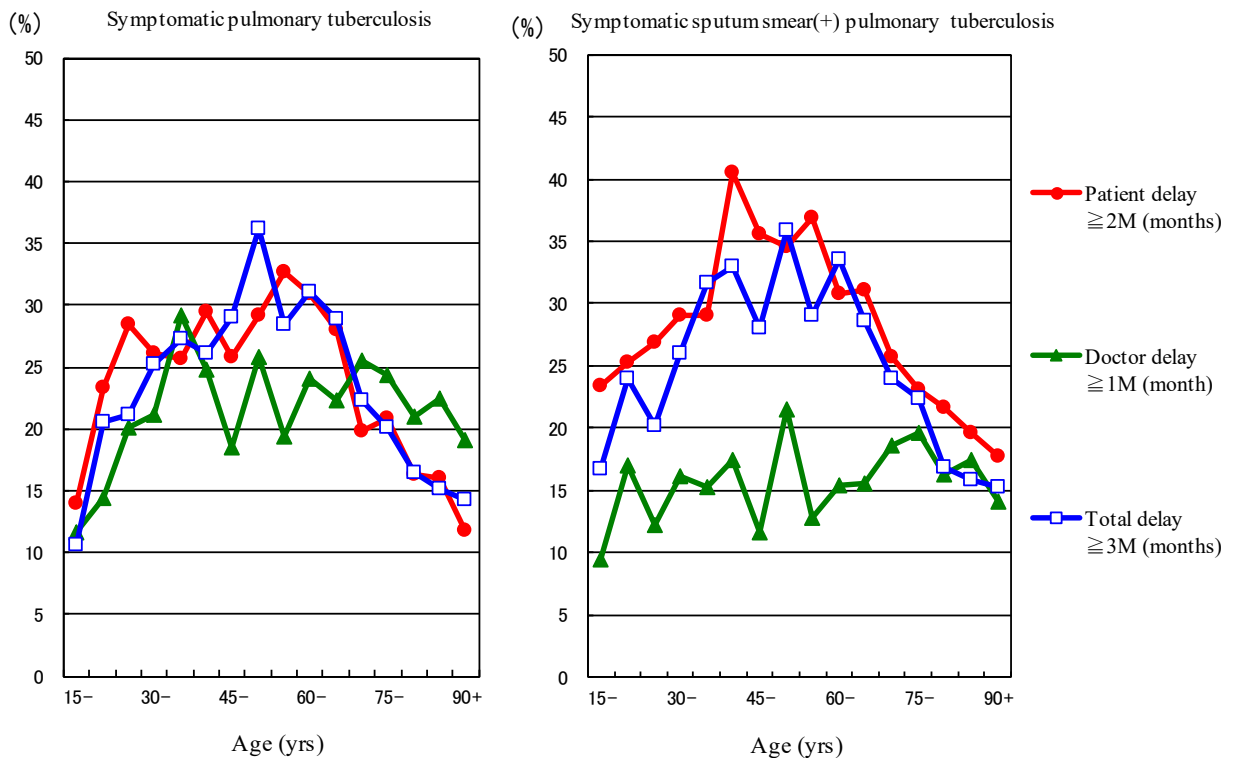


Fig.2 Proportion of patient delay, doctor delay and total delay among symptomatic pulmonary tuberculosis patients by 5-year age group, in 2018
 Patient delay: time interval from the onset of symptoms to the first visit to a medical institution of 2 months or longer
 Doctor delay: time interval from the first visit to a medical institution to the diagnosis of tuberculosis of 1 month or longer
 Total delay: time interval from the onset of symptoms to the diagnosis of tuberculosis is 3 months or longer

Previous table Proportion of mode of detection among newly notified TB patients by age group, 2018

Age groups	Newly notified TB patients	Individual medical checkup	Mass screening				Contact examination		Medical institutions			Others	Unknown
			Schools	Residents	Employees	Facilities	Family	Others	Outpatients with TB symptoms (*1)	Inpatients with other diseases	Outpatients with other diseases		
	<i>n</i>	%	%	%	%	%	%	%	%	%	%	%	%
All forms of TB													
Total	15,590	1.9	1.4	1.8	6.9	0.5	1.5	2.0	55.3	14.9	11.5	0.9	0.4
0-14	51	0.0	7.8	0.0	0.0	0.0	51.0	9.8	23.5	0.0	0.0	5.9	0.0
15-19	158	1.9	23.4	0.0	5.7	0.0	8.9	10.8	39.9	1.3	1.9	0.0	0.0
20-24	654	2.6	17.9	0.2	17.3	0.6	1.4	8.1	43.6	0.6	1.2	0.9	0.3
25-29	619	1.3	8.2	0.3	30.9	0.2	0.3	6.3	45.4	2.1	1.5	0.2	0.3
30-34	460	3.5	2.8	0.2	22.4	0.0	2.0	3.7	57.8	1.5	3.5	0.4	0.4
35-39	425	2.6	0.5	1.2	24.2	0.7	4.7	2.1	54.8	2.4	4.7	0.5	1.2
40-44	433	4.8	0.2	1.4	24.5	0.5	2.3	4.4	49.7	2.3	7.2	0.9	0.0
45-49	601	1.8	0.0	1.2	22.3	0.2	3.3	4.2	52.7	5.2	6.5	1.2	0.3
50-54	557	4.3	0.0	1.4	15.8	0.4	1.1	4.5	55.7	5.6	8.8	0.9	0.4
55-59	593	3.0	0.0	1.0	13.7	0.7	2.9	3.7	54.6	7.8	9.1	1.5	1.0
60-64	642	3.6	0.2	1.7	11.5	0.0	2.8	1.4	56.2	8.1	11.8	0.8	0.8
65-69	1,062	2.5	0.0	2.6	5.0	0.7	2.0	2.4	52.4	12.2	16.5	2.3	0.6
70-74	1,253	1.9	0.0	3.8	1.3	0.3	1.0	1.3	55.8	14.9	17.8	1.0	0.6
75-79	1,742	1.6	0.0	3.8	0.3	0.5	0.9	0.6	54.5	18.6	17.5	0.7	0.3
80-84	2,170	1.0	0.0	2.4	0.0	0.3	0.8	0.3	56.7	20.9	16.1	0.9	0.2
85-89	2,364	1.0	0.0	1.1	0.0	0.6	0.5	0.4	59.5	23.6	12.2	0.5	0.1
90+	1,806	0.8	0.0	1.2	0.0	0.9	0.6	0.4	61.2	25.4	8.5	0.8	0.3
(Re-count) Sputum smear positive pulmonary TB													
Total	5,781	1.4	0.6	1.2	4.6	0.4	0.5	0.5	63.2	15.6	10.1	0.7	0.3
0-14	4	0.0	0.0	0.0	0.0	0.0	0.0	0.0	100.0	0.0	0.0	0.0	0.0
15-19	40	5.0	17.5	0.0	5.0	0.0	2.5	10.0	55.0	2.5	0.0	0.0	0.0
20-24	141	1.4	11.3	0.0	12.1	0.0	0.0	3.5	63.8	0.7	0.7	1.4	0.0
25-29	155	1.3	5.8	0.0	21.3	0.0	0.0	2.6	61.3	3.2	0.6	0.0	0.0
30-34	138	2.9	1.4	0.0	15.2	0.0	0.0	0.0	76.8	0.0	1.4	0.0	0.0
35-39	121	0.8	0.0	0.0	13.2	0.0	2.5	1.7	76.9	3.3	0.8	0.0	0.8
40-44	127	5.5	0.0	0.8	23.6	0.8	0.8	0.0	58.3	0.8	7.9	0.0	0.0
45-49	194	1.0	0.0	1.5	19.6	0.0	1.0	0.0	67.0	3.1	4.6	1.0	0.0
50-54	200	2.0	0.0	0.5	11.5	0.0	0.0	1.0	73.5	2.5	6.5	0.0	1.0
55-59	217	0.5	0.0	1.4	12.4	0.9	0.9	0.5	65.9	8.3	6.0	1.8	0.5
60-64	265	1.9	0.0	0.0	9.8	0.0	0.8	0.4	67.5	6.4	9.4	0.8	1.1
65-69	428	1.9	0.0	1.2	5.1	0.5	0.5	0.7	61.9	13.6	11.4	1.6	0.9
70-74	464	1.9	0.0	1.9	1.1	0.0	0.4	0.0	64.0	14.9	14.0	0.6	0.4
75-79	637	1.7	0.0	2.5	0.6	0.6	0.8	0.3	57.9	19.3	14.6	0.9	0.2
80-84	882	1.1	0.0	1.9	0.0	0.3	0.6	0.1	62.6	18.9	13.3	0.6	0.2
85-89	975	0.8	0.0	0.6	0.0	0.6	0.4	0.4	59.2	24.8	12.3	0.4	0.1
90+	793	0.8	0.0	0.8	0.0	1.0	0.3	0.1	64.7	23.5	8.3	0.4	0.3

TB: tuberculosis

*1 TB symptoms: Respiratory symptoms such as cough, sputum expectoration, bloody sputum, and hemoptysis; and other symptoms such as wheezing, chest pain, back pain, dyspnea, fever, night sweating, fatigue tendency, and weight loss.

Previous table Number of newly notified TB patients by occupation, sex and age group, 2018

Sex/Age group	Total	Service workers	Nurses/Public health nurses	Medical doctors	Other medical workers	Teachers/Nursery nurses	Pupils/Students	Other regular workers	Other temporary/daily workers	Other self-employed	Housekeepers	Infants/Little children	Jobless/ Others	Unknown
Male	9,263	200	13	26	60	27	350	1,810	345	430	9	16	5,789	188
0-14	32	0	0	0	0	0	15	0	0	0	0	16	1	0
15-19	88	1	0	0	0	0	71	10	1	0	0	0	5	0
20-24	372	3	2	0	6	0	173	136	13	1	0	0	33	5
25-29	351	17	0	2	8	2	70	187	21	8	0	0	30	6
30-39	467	33	4	1	18	5	18	275	39	20	1	0	42	11
40-49	639	35	4	2	8	5	3	382	35	53	0	0	99	13
50-59	777	38	0	9	11	7	0	390	60	60	1	0	179	22
60-69	1,209	41	2	3	7	8	0	321	105	103	1	0	574	44
70-79	1,930	23	1	2	2	0	0	98	61	115	0	0	1,584	44
80+	3,398	9	0	7	0	0	0	11	10	70	6	0	3,242	43
Female	6,327	175	155	8	165	33	253	581	188	95	192	7	4,374	101
0-14	19	0	0	0	0	0	11	0	0	0	0	7	1	0
15-19	70	2	0	0	3	0	52	4	1	0	1	0	7	0
20-24	282	19	12	0	8	5	118	72	13	0	2	0	29	4
25-29	268	9	12	1	8	10	57	107	16	3	10	0	29	6
30-39	418	38	34	2	39	8	15	125	37	7	27	0	70	16
40-49	395	44	54	3	30	3	0	118	44	7	24	0	59	9
50-59	373	24	29	1	41	4	0	84	30	16	23	0	106	15
60-69	495	20	14	1	31	3	0	44	24	22	34	0	287	15
70-79	1,065	18	0	0	5	0	0	23	19	19	54	0	910	17
80+	2,942	1	0	0	0	0	0	4	4	21	17	0	2,876	19

Previous table Proportion of mode of detection among newly notified pulmonary TB patients aged 20-59 years by occupation, 2018

	Pulmonary TB patients	Individual medical checkup	Mass screening			Contact examination		Clinics/Hospitals			Others/Unknown
			Residents	Employees	Schools/Facilities	Family	Others	Outpatients with TB symptoms(*2)	Inpatients with other diseases	Outpatients with other diseases	
	<i>n</i>	%	%	%	%	%	%	%	%	%	%
Total	3,505	3.3	1.0	25.2	5.6	2.5	5.7	45.5	2.9	4.4	3.8
Service workers	208	4.3	1.0	25.0	0.5	2.4	1.9	57.2	1.4	4.3	1.9
Medical workers(*1)	285	1.4	0.4	37.9	0.7	2.1	10.2	38.6	0.0	6.3	2.5
Teachers/ Nursery nurses	41	2.4	0.0	39.0	0.0	4.9	12.2	36.6	2.4	0.0	2.4
Students	403	2.5	0.7	2.2	43.9	0.5	9.4	29.0	0.2	0.5	10.9
Other regular workers	1,517	2.8	0.5	38.5	0.2	2.7	5.7	41.8	2.1	3.8	1.8
Other temporary/ daily workers	241	3.3	1.7	22.8	0.0	2.9	8.3	52.3	1.7	4.6	2.5
Other self-employed	141	9.9	5.0	8.5	0.0	2.1	0.0	61.7	4.3	5.7	2.8
Housekeepers	59	8.5	3.4	6.8	0.0	0.0	0.0	61.0	1.7	16.9	1.7
Jobless/ Others	533	3.8	1.7	6.9	2.3	3.9	3.0	56.3	9.6	6.6	6.0
Unknown	77	2.6	0.0	9.1	0.0	2.6	1.3	66.2	2.6	5.2	10.4

*1 Medical workers include nurses, public health nurses, medical doctors and dentists, physical therapists, occupational therapists, medical technologists, radiographers, and co-medicals.

*2 TB symptoms: Respiratory symptoms such as cough, sputum expectoration, bloody sputum, and hemoptysis; and other symptoms such as wheezing, chest pain, back pain, dyspnea, fever, night sweating, fatigue tendency, and weight loss.

【Tuberculosis Characteristics upon Diagnosis】

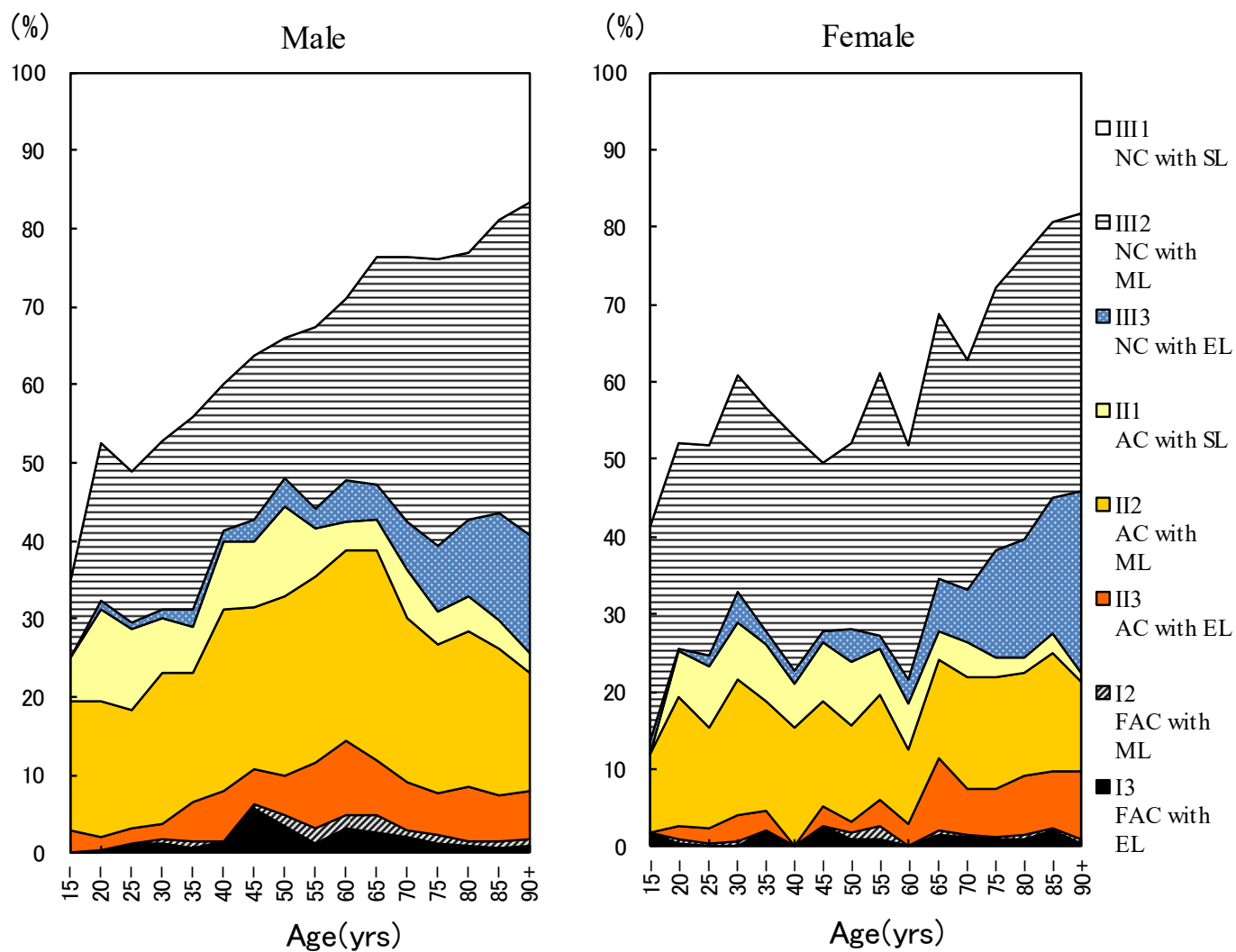


Fig.3 Proportion of cases classified by X-ray classification by sex and 5-yearage group, 2018
 NC : Non-cavitory SL : Slight lesion AC : Advanced cavitory ML : Moderate lesion
 FAC: Far-advance cavitory EL : Extensive lesion

Table 2 Number of newly notified tuberculosis patients with HIV infection, by sex and age group, 2018 and 2007–2018

Age group	Sputum smear positive		Other bacteriologically-positive		Bacteriologically-negative		Extra-pulmonary		Total		
	M	F	M	F	M	F	M	F	M	F	
2018 Calendar year											
Total	9 (2)	6 (2)	6 (2)	2 (1)	5 (3)	1	13 (5)	2 (1)	33 (12)	11 (4)	
0-19	0	0	0	0	1 (1)	0	0	0	1 (1)	0	
20-24	0	0	0	0	0	0	1 (1)	0	1 (1)	0	
25-29	0	0	0	0	0	0	0	0	0	0	
30-34	0	1 (1)	0	0	2 (2)	0	3 (2)	1 (1)	5 (4)	2 (2)	
35-39	2	0	1 (1)	0	0	0	1 (1)	0	4 (2)	0	
40-44	2	0	0	0	0	0	1 (1)	0	3 (1)	0	
45-49	1	1 (1)	1 (1)	0	1	0	3	0	6 (1)	1 (1)	
50-54	2 (1)	0	0	2 (1)	0	0	1	0	3 (1)	2 (1)	
55-59	0	0	0	0	0	0	0	0	0	0	
60-64	0	0	0	0	0	0	0	0	0	0	
65-69	0	0	2	0	1	0	1	0	4	0	
70-74	1 (1)	1	1	0	0	0	1	1	3 (1)	2	
75-79	1	0	0	0	0	0	0	0	1	0	
80+	0	3	1	0	0	1	1	0	2	4	
2007-2018 Calendar year											
Total	174 (19)	43 (20)	0	97 (23)	15 (10)	45 (8)	10 (7)	209 (42)	30 (16)	525 (92)	98 (53)
0-19	1 (1)	0	0	0	0	1 (1)	0	2	0	4 (2)	0
20-24	6 (4)	0	0	4 (3)	0	1 (1)	1 (1)	2 (1)	1	13 (9)	2 (1)
25-29	10 (5)	6 (5)	0	2 (1)	1 (1)	1 (1)	2 (2)	13 (3)	1 (1)	26 (10)	10 (9)
30-34	13 (3)	5 (5)	0	12 (1)	4 (3)	4 (2)	1 (1)	27 (10)	5 (3)	56 (16)	15 (12)
35-39	25 (2)	4 (3)	0	19 (6)	3 (3)	6	2 (2)	35 (8)	6 (5)	85 (16)	15 (13)
40-44	29 (1)	6 (4)	0	16 (5)	0	8 (2)	3 (1)	44 (14)	7 (5)	97 (22)	16 (10)
45-49	17 (1)	3 (3)	0	12 (5)	1 (1)	6 (1)	0	35 (5)	2	70 (12)	6 (4)
50-54	14 (1)	1	0	12 (2)	2 (1)	5	0	15 (1)	0	46 (4)	3 (1)
55-59	9	0	0	4	0	4	0	10	2 (2)	27	2 (2)
60-64	17	1	0	6	1 (1)	3	0	7	0	33	2 (1)
65-69	10	0	0	5	0	4	0	10	1	29	1
70-74	6 (1)	3	0	2	1	1	0	4	2	13 (1)	6
75-79	6	1	0	0	0	1	0	3	2	10	3
80+	11	13	0	3	2	0	1	2	1	16	17

() : Re-count of foreigners

HIV : Human Immunodeficiency Virus. M : male patients, F : female patients.

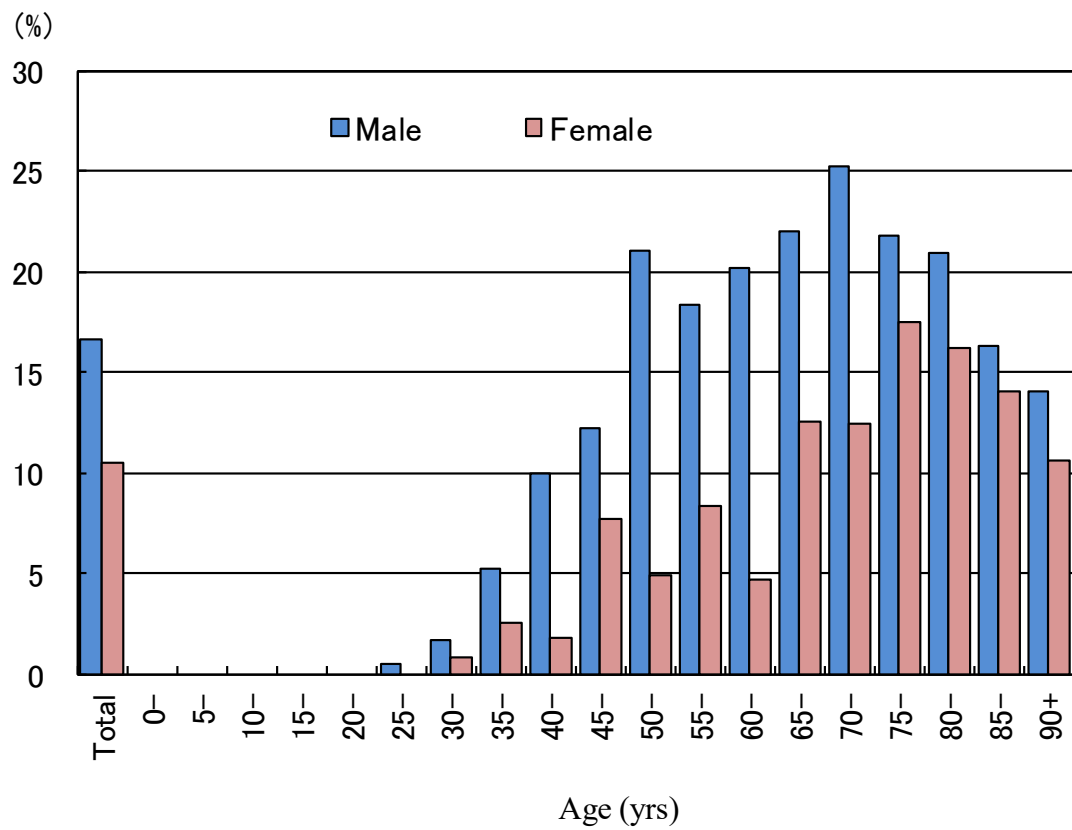


Fig.4 Proportion of newly notified tuberculosis patients with diabetes mellitus in each age-group by sex, 2018

Table 3 Drug susceptibility test results among newly notified pulmonary tuberculosis patients, by treatment history, 2012–2018

Treatment history, Culture examination results, Drug susceptibility test results	2012				2013				2014				2015				2016				2017				2018			
	n	%	%	%	n	%	%	%	n	%	%	%	n	%	%	%	n	%	%	%	n	%	%	%	n	%	%	%
Total																												
Pulmonary tuberculosis	16,432	100%			15,972	100%			15,149	100%			14,123	100%			13,608	100%			13,011	100%			12,033	100%		
Culture result obtained	14,058	85.6			13,311	83.3			12,909	85.2			12,260	86.8			12,255	90.1			11,764	90.4			11,070	92.0		
Culture positive	11,261	68.5	100%		10,523	65.9	100%		10,259	67.7	100%		10,035	71.1	100%		9,878	72.6	100%		9,580	73.6	100%		9,016	74.9	100%	
DST result obtained	8,347		74.1	100%	7,701		73.2	100%	7,645		74.5	100%	7,630		76.0	100%	7,732		78.3	100%	7,891		82.4	100%	7,570		84.0	100%
MDR	60			0.7	47			0.6	56			0.7	48			0.6	49			0.6	52			0.7	55			0.7
Any INH resistance	380			4.6	369			4.8	349			4.6	372			4.9	369			4.8	383			4.9	377			5.0
Any RFP resistance	73			0.9	64			0.8	76			1.0	77			1.0	74			1.0	80			1.0	87			1.1
Any resistance*	810			9.7	757			9.8	749			9.8	767			10.1	741			9.6	853			10.8	781			10.3
New treatment																												
Pulmonary tuberculosis	15,040	100%			14,727	100%			13,956	100%			13,102	100%			12,686	100%			12,174	100%			11,298	100%		
Culture result obtained	12,882	85.7			12,279	83.4			11,897	85.2			11,394	87.0			11,435	90.1			11,018	90.5			10,405	92.1		
Culture positive	10,379	69.0	100%		9,782	66.4	100%		9,523	68.2	100%		9,379	71.6	100%		9,284	73.2	100%		9,030	74.2	100%		8,536	75.6	100%	
DST result obtained	7,676		74.0	100%	7,166		73.3	100%	7,104		74.6	100%	7,135		76.1	100%	7,278		78.4	100%	7,434		82.3	100%	7,171		84.0	100%
MDR	38			0.5	31			0.4	40			0.6	33			0.5	37			0.5	41			0.6	41			0.6
Any INH resistance	310			4.0	326			4.5	288			4.1	317			4.4	316			4.3	338			4.5	331			4.6
Any RFP resistance	46			0.6	42			0.6	58			0.8	58			0.8	56			0.8	62			0.8	68			0.9
Any resistance*	712			9.3	680			9.5	664			9.3	686			9.6	659			9.1	773			10.4	717			10.0
Re-treatment																												
Pulmonary tuberculosis	1,094	100%			1,013	100%			968	100%			851	100%			735	100%			660	100%			575	100%		
Culture result obtained	959	87.7			852	84.1			848	87.6			732	86.0			665	90.5			605	91.7			532	92.5		
Culture positive	693	63.3	100%		586	57.8	100%		591	61.1	100%		534	62.7	100%		462	62.9	100%		423	64.1	100%		365	63.5	100%	
DST result obtained	555		80.1	100%	435		74.2	100%	449		76.0	100%	412		77.2	100%	358		77.5	100%	362		85.6	100%	323		88.5	100%
MDR	22			4.0	16			3.7	15			3.3	14			3.4	12			3.4	9			2.5	11			3.4
Any INH resistance	67			12.1	35			8.0	57			12.7	49			11.9	51			14.2	36			9.9	41			12.7
Any RFP resistance	26			4.7	22			5.1	17			3.8	18			4.4	16			4.5	15			4.1	16			5.0
Any resistance*	94			16.9	65			14.9	79			17.6	72			17.5	70			19.6	65			18.0	58			18.0
No information about treatment history																												
Pulmonary tuberculosis	298	100%			232	100%			225	100%			170	100%			187	100%			177	100%			160	100%		
Culture result obtained	217	72.8			180	77.6			164	72.9			134	78.8			155	82.9			141	79.7			133	83.1		
Culture positive	189	63.4	100%		155	66.8	100%		145	64.4	100%		122	71.8	100%		132	70.6	100%		127	71.8	100%		115	71.9	100%	
DST result obtained	116		61.4	100%	100		64.5	100%	92		63.4	100%	83		68.0	100%	96		72.7	100%	95		74.8	100%	76		66.1	100%
MDR	0			0.0	0			0.0	1			1.1	1			1.2	0			0.0	2			2.1	3			3.9
Any INH resistance	3			2.6	8			8.0	4			4.3	6			7.2	2			2.1	9			9.5	5			6.6
Any RFP resistance	1			0.9	0			0.0	1			1.1	1			1.2	2			2.1	3			3.2	3			3.9
Any resistance*	4			3.4	12			12.0	6			6.5	9			10.8	12			12.5	15			15.8	6			7.9

DST: Drug susceptibility test MDR : Multi-drug resistant, i.e., resistant to at least INH and RFP INH: isoniazid RFP: rifampicin

Cases having drug resistance are counted independently by drug.

*: resistant to either INH, RFP, SM, or EB

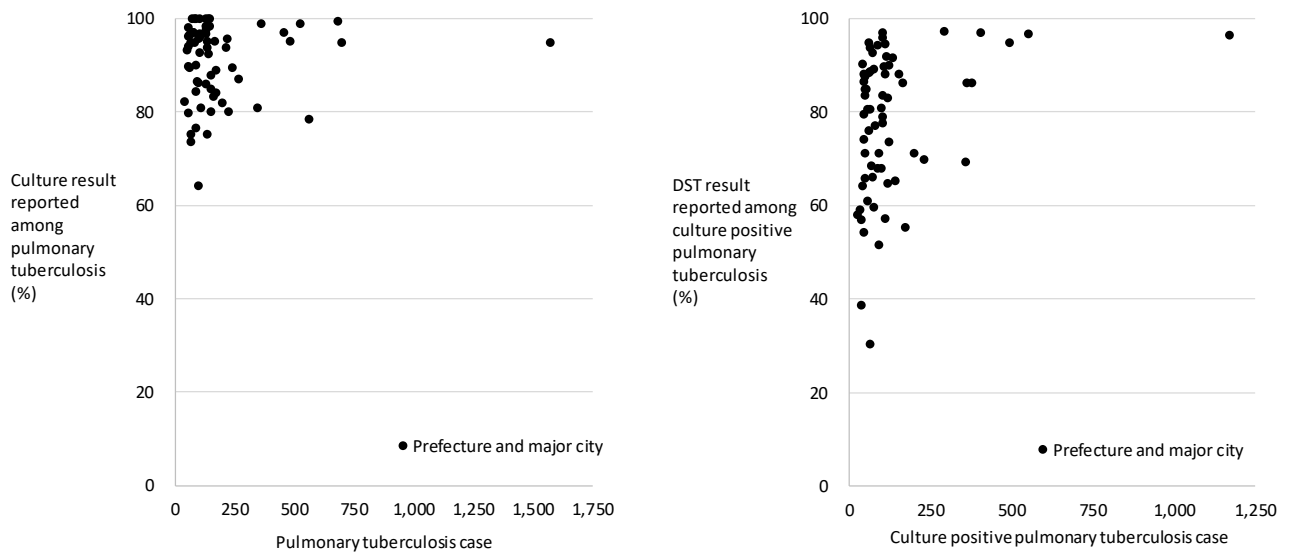
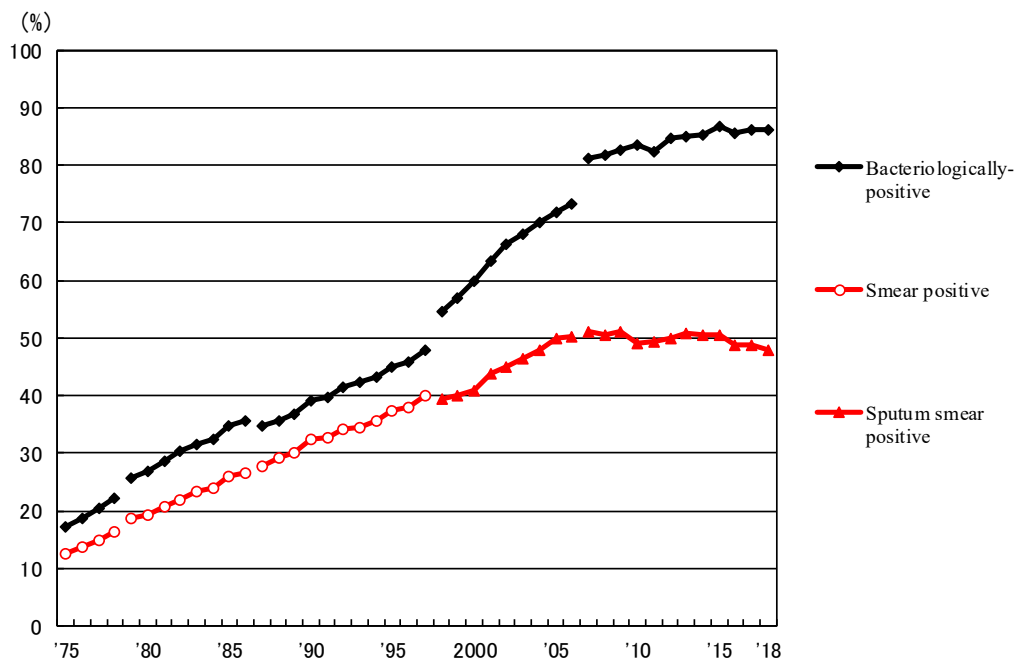


Fig. 5 Scatter plot of culture results reported among pulmonary tuberculosis patients and anti-tuberculosis drug susceptibility test results among newly notified pulmonary tuberculosis patients, by prefecture and major city, 2018



Previous Fig
Proportion of bacteriologically confirmed cases among newly notified pulmonary tuberculosis patients, 1975-2018

Sources of information and subjects:

Annual tuberculosis reports from public health centers

1975-1978: All forms of tuberculosis

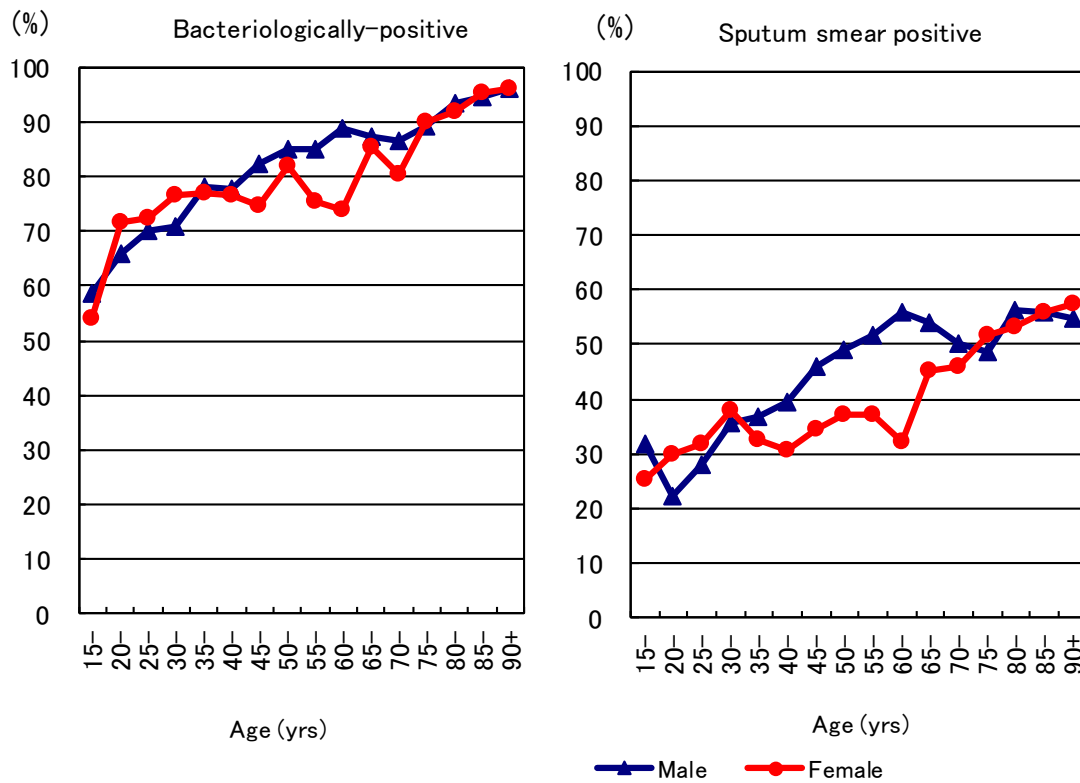
1979-1986: 肺結核 Pulmonary tuberculosis

Nationwide computerized tuberculosis surveillance system

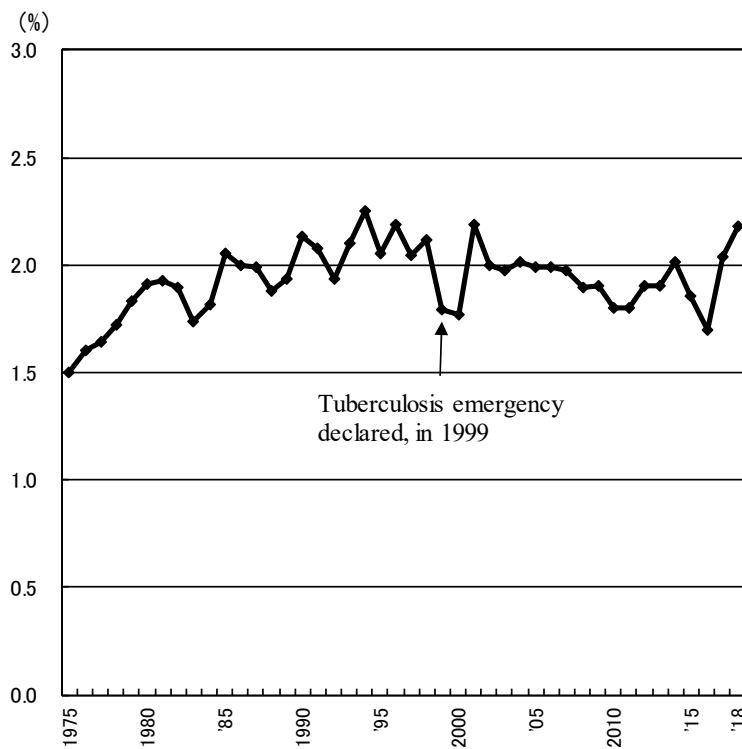
1987-1997: Pulmonary Tuberculosis

1998-2006: Pulmonary tuberculosis (New patient criteria for notification were applied)

2007-2009: Pulmonary tuberculosis (Item of nucleic acid amplification was added)



Previous Fig. Proportion of bacteriologically confirmed cases among newly notified pulmonary tuberculosis patients by sex and 5-year age group, 2018



Previous Fig. Proportion of far-advanced cavitary cases among newly notified pulmonary Tuberculosis patients, 1975-2017

Previous table Proportion of cavitary or/and sputum smear positive cases among newly notified pulmonary TB patients aged 30-59 years, 2018

	Male									Female								
	Pulmonary TB	Cavitary or sputum smear(+)			Cavitary and sputum smear(+)			Pulmonary TB	Cavitary or sputum smear(+)			Cavitary and sputum smear(+)						
		n	%	Ratio	n	%	Ratio		n	%	Ratio	n	%	Ratio				
Service workers	87	52	59.8	2.3	29	33.3	3.3	79	43	54.4	1.6	16	20.3	2.2				
Medical workers	49	13	26.5	1.0	5	10.2	1.0	183	61	33.3	1.0	17	9.3	1.0				
Teachers/ Nursery nurses	13	5	38.5	1.4	1	7.7	0.8	12	4	33.3	1.0	2	16.7	1.8				
Other regular workers	860	431	50.1	1.9	208	24.2	2.4	244	103	42.2	1.3	33	13.5	1.5				
Other temporary/ daily workers	110	67	60.9	2.3	45	40.9	4.0	81	52	64.2	1.9	16	19.8	2.1				
Other self-employed	109	66	60.6	2.3	39	35.8	3.5	21	12	57.1	1.7	3	14.3	1.5				
Jobless	241	157	65.1	2.5	95	39.4	3.9	147	65	44.2	1.3	24	16.3	1.8				
Others	77	28	36.4	1.4	16	20.8	2.0	113	50	44.2	1.3	25	22.1	2.4				
Total	1,546	819	53.0		438	28.3		880	390	44.3		136	15.5					

Others: Houskeepers/ Students/ Unknown

Ratio: The ratio of each proportion to that of medical workers

Previous table Drug susceptibility test results among newly notified pulmonary tuberculosis patients, by sex and age group, 2018 and 2007–2018

Age group	Total											New treatment (Re-count)								
	Male					Female						Male				Female				
	DST result obtained	MDR	Any INH resistance	Any RFP resistance	Any resistance	DST result obtained	MDR	Any INH resistance	Any RFP resistance	Any resistance	DST result obtained	MDR	Any INH resistance	Any RFP resistance	Any resistance	DST result obtained	MDR	Any INH resistance	Any RFP resistance	Any resistance
2018年	2018 Calendar year																			
Total	4,732	28	234	57	507	2,838	27	143	30	274	4,461	20	205	44	462	2,710	21	126	24	255
0-19	37	0	2	2	12	29	0	1	0	2	35	0	2	2	12	26	0	1	0	2
20-29	323	8	34	11	59	256	10	21	11	40	305	5	30	6	52	246	7	17	8	36
30-39	211	5	19	6	35	191	9	25	9	34	203	5	19	6	34	186	7	22	7	31
40-49	323	3	17	7	36	151	1	8	1	16	310	3	15	7	34	145	1	8	1	16
50-59	414	5	23	12	55	146	1	14	3	23	391	1	17	8	49	135	0	11	2	19
60-69	683	2	27	8	71	206	5	16	5	25	638	2	22	7	62	195	5	14	5	23
70-79	947	0	46	3	104	452	1	24	1	48	902	0	40	2	96	436	1	24	1	48
80+	1,794	5	66	8	135	1,407	0	34	0	86	1,677	4	60	6	123	1,341	0	29	0	80
2007-2018 Calendar year	2007-2018 Calendar year																			
Total	56,378	415	2,856	612	6,577	29,989	234	1,342	316	2,987	51,413	272	2,357	412	5,747	28,243	150	1,112	216	2,646
0-19	431	10	40	12	86	357	2	30	3	69	412	7	37	9	83	338	2	28	3	64
20-29	2,951	63	237	81	515	2,514	65	201	85	425	2,821	47	210	60	478	2,406	46	176	62	389
30-39	3,297	30	219	46	511	2,537	41	181	54	372	3,124	24	206	40	482	2,440	32	162	41	341
40-49	4,423	39	241	62	599	2,151	21	107	31	264	4,153	29	216	44	540	2,046	13	95	22	242
50-59	6,180	56	345	93	890	1,787	23	93	33	209	5,742	33	298	60	801	1,682	9	71	18	181
60-69	9,677	62	508	109	1,255	2,639	18	131	23	313	8,875	42	420	73	1,090	2,481	12	105	16	273
70-79	12,198	85	632	116	1,453	5,308	26	224	34	526	10,976	45	483	65	1,227	4,931	12	185	17	465
80+	17,221	70	634	93	1,268	12,696	38	375	53	809	15,310	45	487	61	1,046	11,919	24	290	37	691
2007-2018 Calendar year	2007-2018 Calendar year																			
Total	100%	0.7	5.1	1.1	11.7	100%	0.8	4.5	1.1	10.0	100%	0.5	4.6	0.8	11.2	100%	0.5	3.9	0.8	9.4
0-19	100	2.3	9.3	2.8	20.0	100	0.6	8.4	0.8	19.3	100	1.7	9.0	2.2	20.1	100	0.6	8.3	0.9	18.9
20-29	100	2.1	8.0	2.7	17.5	100	2.6	8.0	3.4	16.9	100	1.7	7.4	2.1	16.9	100	1.9	7.3	2.6	16.2
30-39	100	0.9	6.6	1.4	15.5	100	1.6	7.1	2.1	14.7	100	0.8	6.6	1.3	15.4	100	1.3	6.6	1.7	14.0
40-49	100	0.9	5.4	1.4	13.5	100	1.0	5.0	1.4	12.3	100	0.7	5.2	1.1	13.0	100	0.6	4.6	1.1	11.8
50-59	100	0.9	5.6	1.5	14.4	100	1.3	5.2	1.8	11.7	100	0.6	5.2	1.0	13.9	100	0.5	4.2	1.1	10.8
60-69	100	0.6	5.2	1.1	13.0	100	0.7	5.0	0.9	11.9	100	0.5	4.7	0.8	12.3	100	0.5	4.2	0.6	11.0
70-79	100	0.7	5.2	1.0	11.9	100	0.5	4.2	0.6	9.9	100	0.4	4.4	0.6	11.2	100	0.2	3.8	0.3	9.4
80+	100	0.4	3.7	0.5	7.4	100	0.3	3.0	0.4	6.4	100	0.3	3.2	0.4	6.8	100	0.2	2.4	0.3	5.8

DST: Drug susceptibility test. MDR: Multi-drug resistance, i.e., resistant to at least INH and RFP.

INH: Isoniazid. RFP: Rifampicin.

Previous table Drug susceptibility test results among newly notified pulmonary tuberculosis patients, by sex and age group, 2007-2018 (Re-count of foreigners)

Age group	Total										New treatment (Re-count)									
	Male					Female					Male				Female					
	DST result obtained	MDR	Any INH resistance	Any RFP resistance	Any resistance	DST result obtained	MDR	Any INH resistance	Any RFP resistance	Any resistance	DST result obtained	MDR	Any INH resistance	Any RFP resistance	Any resistance	DST result obtained	MDR	Any INH resistance	Any RFP resistance	Any resistance
2007-2018 Calendar year																				
Total	2144	84	252	104	412	2212	99	277	123	441	2034	57	215	75	369	2102	74	243	93	395
0-19	132	9	28	11	43	81	1	11	2	15	127	6	25	8	40	78	1	10	2	14
20-29	1,123	54	140	66	223	1,021	57	136	72	229	1,073	39	118	48	199	983	42	118	54	206
30-39	361	13	38	18	65	553	25	82	28	113	345	11	36	16	61	527	20	75	22	104
40-49	179	5	17	6	32	283	6	22	8	41	167	1	12	1	25	265	3	19	4	36
50-59	116	1	6	1	11	129	5	17	7	25	110	0	5	0	10	116	4	13	6	19
60-69	101	2	13	2	24	59	2	5	3	8	91	2	11	2	22	56	2	5	3	8
70-79	67	0	6	0	7	36	3	4	3	6	61	0	5	0	6	30	2	3	2	4
80+	65	0	4	0	7	50	0	0	0	4	60	0	3	0	6	47	0	0	0	4
2007-2018 Calendar year																				
Total	100%	3.9	11.8	4.9	19.2	100%	4.5	12.5	5.6	19.9	100%	2.8	10.6	3.7	18.1	100%	3.5	11.6	4.4	18.8
0-19	100	6.8	21.2	8.3	32.6	100	1.2	13.6	2.5	18.5	100	4.7	19.7	6.3	31.5	100	1.3	12.8	2.6	17.9
20-29	100	4.8	12.5	5.9	19.9	100	5.6	13.3	7.1	22.4	100	3.6	11.0	4.5	18.5	100	4.3	12.0	5.5	21.0
30-39	100	3.6	10.5	5.0	18.0	100	4.5	14.8	5.1	20.4	100	3.2	10.4	4.6	17.7	100	3.8	14.2	4.2	19.7
40-49	100	2.8	9.5	3.4	17.9	100	2.1	7.8	2.8	14.5	100	0.6	7.2	0.6	15.0	100	1.1	7.2	1.5	13.6
50-59	100	0.9	5.2	0.9	9.5	100	3.9	13.2	5.4	19.4	100	0.0	4.5	0.0	9.1	100	3.4	11.2	5.2	16.4
60-69	100	2.0	12.9	2.0	23.8	100	3.4	8.5	5.1	13.6	100	2.2	12.1	2.2	24.2	100	3.6	8.9	5.4	14.3
70-79	100	0.0	9.0	0.0	10.4	100	8.3	11.1	8.3	16.7	100	0.0	8.2	0.0	9.8	100	6.7	10.0	6.7	13.3
80+	100	0.0	6.2	0.0	10.8	100	0.0	0.0	0.0	8.0	100	0.0	5.0	0.0	10.0	100	0.0	0.0	0.0	8.5

DST: Drug susceptibility test. MDR: Multi-drug resistance, i.e., resistant to at least INH and RFP. INH: Isoniazid. RFP: Rifampicin.