

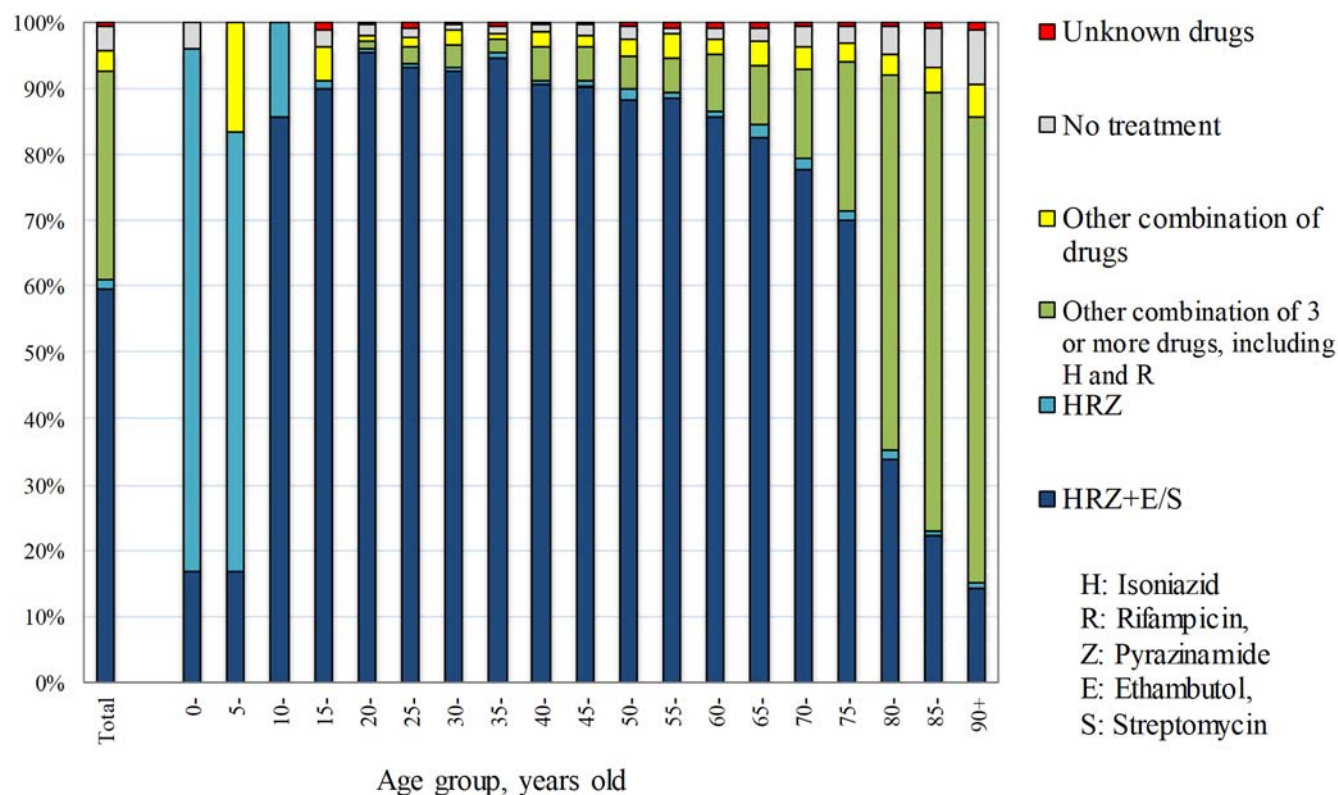
【Treatment 1】

Table 1 Number of patients with TB on re-treatment, by year when previous TB treatment was initiated and age group, 2018

Year when previous TB treatment initiated	Total	Age group (years)								Previous TB treatment regimen unknown (re-count)
		0-19	20-29	30-39	40-49	50-59	60-69	70-79	80+	
Total	732	9	45	39	57	72	109	137	264	189
~1949	36	0	0	0	0	0	0	2	34	23
1950-59	79	0	0	0	0	0	3	12	64	40
1960-69	57	0	0	0	0	1	6	25	25	39
1970-79	19	0	0	0	0	1	8	6	4	12
1980-89	14	0	0	0	0	3	4	2	5	11
1990-99	32	0	2	1	7	7	2	6	7	11
2000-09	89	2	3	7	14	13	15	18	17	20
2010-17	406	7	40	31	36	47	71	66	108	33
2005-2017 (re-count)										
2005	7	0	0	1	1	1	1	3	0	1
2006	13	0	0	0	3	4	0	3	3	5
2007	9	0	1	2	0	1	2	1	2	1
2008	11	0	0	0	2	3	2	2	2	3
2009	12	0	0	2	1	0	3	3	3	1
2010	21	0	1	3	3	3	4	2	5	1
2011	18	0	2	2	2	2	2	1	7	3
2012	24	1	2	0	1	2	3	8	7	3
2013	29	2	2	2	2	5	11	2	3	4
2014	33	1	0	1	1	7	8	3	12	2
2015	57	2	4	5	2	6	7	10	21	6
2016	95	0	9	9	10	11	13	15	28	8
2017	98	0	14	7	6	8	21	19	23	5
2018	31	1	6	2	9	3	2	6	2	1

TB: tuberculosis

Fig.1 Anti-tuberculosis drugs upon notification by age group in 2018



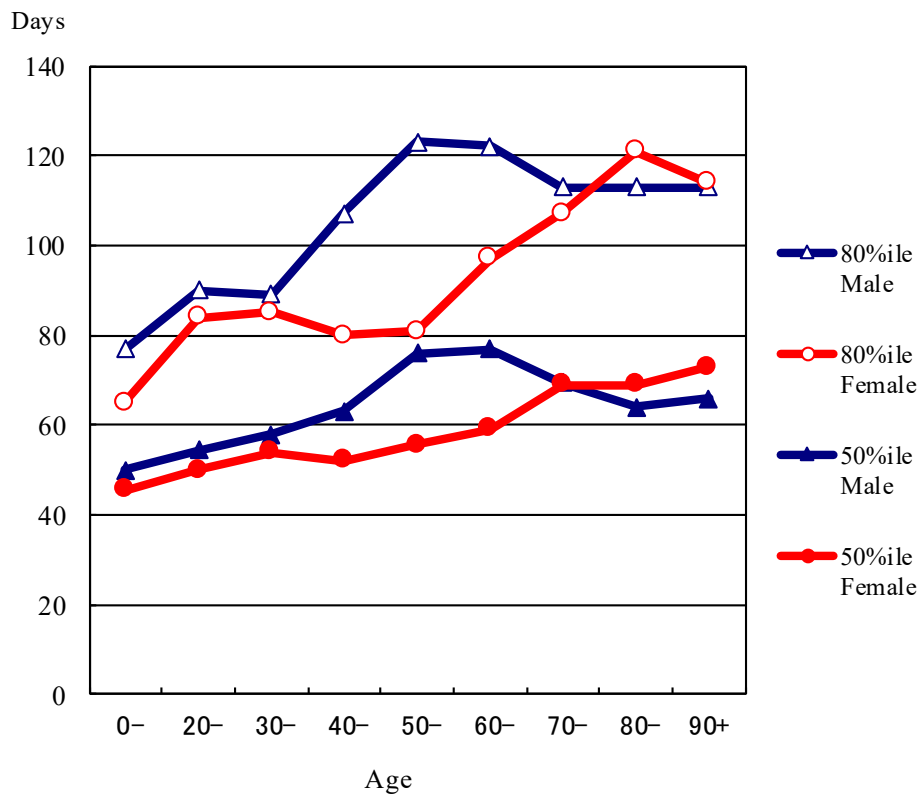
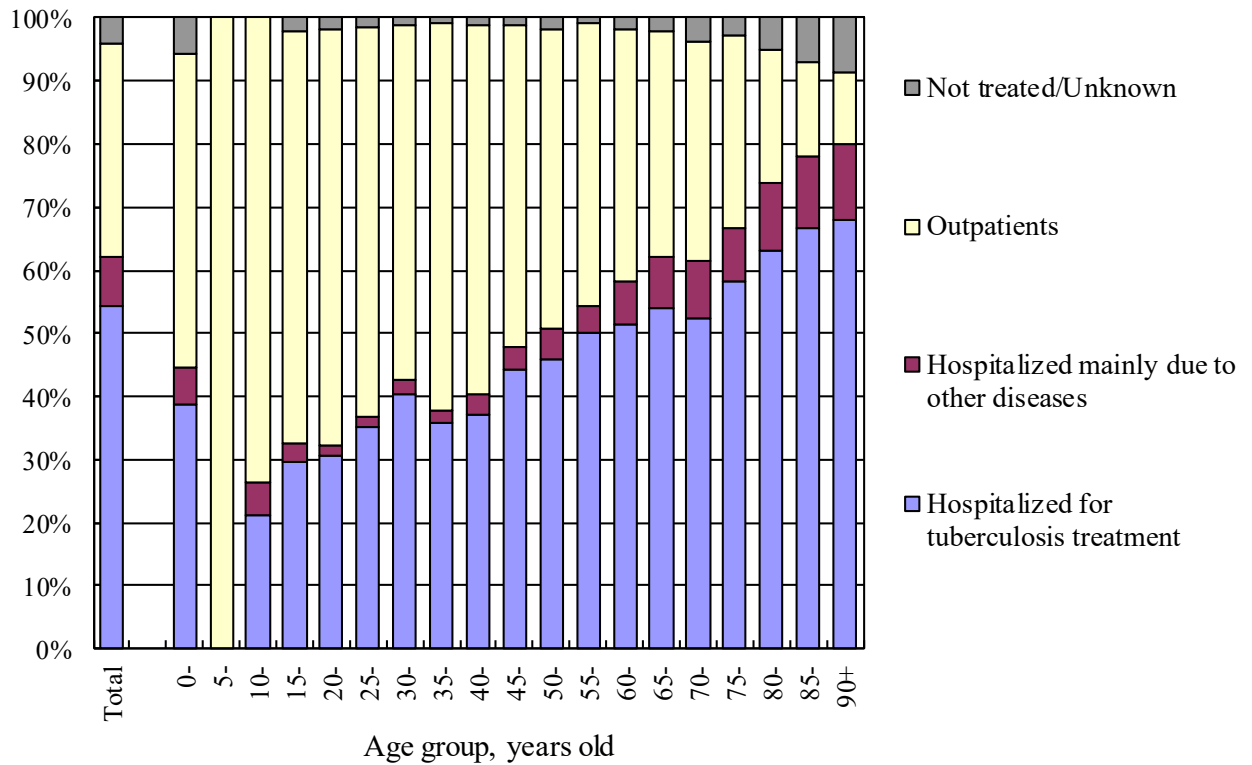
Previous table Number of retreatment tuberculosis patients by previous tuberculosis treatment regimen and age group, 2018

Age group	Retreatment	Previous treatment regimen				
		Regimen with HRZ	Other regimen with HR	Other regimen	LTBI treatment	Unknown
Total	732	224	147	87	85	189
0-4	0	0	0	0	0	0
5-9	0	0	0	0	0	0
10-14	0	0	0	0	0	0
15-19	9	1	1	0	6	1
20-24	21	12	0	0	7	2
25-29	24	14	2	0	3	5
30-34	26	13	4	1	3	5
35-39	13	4	2	1	4	2
40-44	22	10	5	0	4	3
45-49	35	15	4	1	10	5
50-54	37	17	4	1	8	7
55-59	35	14	8	3	5	5
60-64	38	17	7	2	3	9
65-69	71	27	9	6	12	17
70-74	57	20	12	7	4	14
75-79	80	26	13	13	6	22
80-84	100	20	24	23	7	26
85-89	106	8	34	17	2	45
90+	58	6	18	12	1	21

H : Isoniazid, R : Rifampicin, Z : Pyrazinamide
 LTBI : Latent Tuberculosis Infection

【Treatment 2】

Fig.2 Proportion of the outpatients and the hospitalized patients by age group in 2018(N=12,033)



Previous Fig. Median (50 percentile) and 80 percentile of duration of hospitalization among those hospitalized with tuberculosis and with known discharged day, new sputum-smear positive pulmonary tuberculosis patients in 2017 by sex and age group

Previous table Proportion (%) hospitalized among newly notified tuberculosis patients in 2018 by age group and patient classification

Age	Pulmonary TB									
	Total		Sputum smear positive		Other bacillary positive		Bacillary negative /unknown		Extra-pulmonary	
	Ht	Ho	Ht	Ho	Ht	Ho	Ht	Ho	Ht	Ho
Total	48.5	11.1	90.6	2.4	25.7	13.5	7.7	11.0	28.7	22.4
0-19	0.4	0.1	0.6	0.0	0.2	0.0	0.5	0.2	0.3	0.1
20-29	2.5	0.2	4.7	0.0	1.4	0.2	1.0	0.3	0.9	0.4
30-39	1.9	0.2	4.2	0.0	0.5	0.2	0.5	0.3	0.7	0.6
40-49	2.3	0.4	5.1	0.1	0.7	0.4	0.2	0.4	0.7	0.8
50-59	3.1	0.6	6.6	0.1	1.0	0.5	0.4	0.9	1.5	1.3
60-69	5.1	1.1	10.9	0.2	1.9	1.3	0.5	1.7	2.1	1.9
70-79	9.2	2.5	17.3	0.6	4.6	2.5	1.6	2.9	5.3	5.4
80-89	16.8	4.4	28.7	0.9	10.3	5.7	2.3	3.6	12.3	8.6
90+	7.3	1.8	12.4	0.5	5.1	2.7	0.6	0.8	4.8	3.1

Ht: Hospitalized for tuberculosis treatment

Ho: Hospitalized mainly due to other diseases

【Treatment Outcomes】

Table 2 Patients deleted from tuberculosis registration by the end of years (in 2017 and in 2018)
- Patients with tuberculosis patients and LTBI notified in the previous years (in 2016 and in 2017, respectively) -

	Newly notified patients with tuberculosis												Patients with LTBI (Not included in the total) (%)			
	Total (%)	Patients with pulmonary tuberculosis						Patients with extra-pulmonary tuberculosis (%)								
		Sub-total (pulmonary tuberculosis) (%)	Sputum-smear positive		Other bacteriologically positive (%)	Bacteriologically negative and others (%)										
			New (%)	Re-treatment (%)												
Newly notified tuberculosis cases in 2016*	17,539	(100)	13,579	(100)	6,291	(100)	365	(100)	5,031	(100)	1,892	(100)	3,960	(100)	7,454	(100)
Total number of patients deleted from tuberculosis registration by the end of 2017	5,584	(31.8)	4,432	(32.6)	2,422	(38.5)	132	(36.2)	1,469	(29.2)	409	(21.6)	1,152	(29.1)	3,089	(41.4)
No need for post-treatment follow-up	27	(0.2)	13	(0.1)	4	(0.1)	1	(0.3)	3	(0.1)	5	(0.3)	14	(0.4)	2,385	(32.0)
Died	4,411	(25.1)	3,476	(25.6)	2,041	(32.4)	108	(29.6)	1,127	(22.4)	200	(10.6)	935	(23.6)	219	(2.9)
Tuberculosis-related death	1,321	(7.5)	1,077	(7.9)	808	(12.8)	41	(11.2)	188	(3.7)	40	(2.1)	244	(6.2)	1	(0.0)
Other causes of death	3,090	(17.6)	2,399	(17.7)	1,233	(19.6)	67	(18.4)	939	(18.7)	160	(8.5)	691	(17.4)	218	(2.9)
Transfer out	1,036	(5.9)	857	(6.3)	336	(5.3)	19	(5.2)	312	(6.2)	190	(10.0)	179	(4.5)	373	(5.0)
Register during follow-up	83	(0.5)	66	(0.5)	36	(0.6)	4	(1.1)	17	(0.3)	9	(0.5)	17	(0.4)	61	(0.8)
Other reasons	27	(0.2)	20	(0.1)	5	(0.1)	0	(0.0)	10	(0.2)	5	(0.3)	7	(0.2)	51	(0.7)
Newly notified tuberculosis cases in 2017**	16,702	(100)	12,973	(100)	6,030	(100)	331	(100)	4,887	(100)	1,725	(100)	3,729	(100)	7,239	(100)
Total number of patients deleted from tuberculosis registration by the end of 2018	5,427	(32.5)	4,247	(32.7)	2,279	(37.8)	104	(31.4)	1,469	(30.1)	395	(22.9)	1,180	(31.6)	3,817	(52.7)
No need for post-treatment follow-up	44	(0.3)	18	(0.1)	5	(0.1)	1	(0.3)	9	(0.2)	3	(0.2)	26	(0.7)	3150	(43.5)
Died	4,261	(25.5)	3,314	(25.5)	1,902	(31.5)	82	(24.8)	1,125	(23.0)	205	(11.9)	947	(25.4)	244	(3.4)
Tuberculosis-related death	1,322	(7.9)	1,077	(8.3)	810	(13.4)	23	(6.9)	211	(4.3)	33	(1.9)	245	(6.6)	2	(0.0)
Other causes of death	2,939	(17.6)	2,237	(17.2)	1,092	(18.1)	59	(17.8)	914	(18.7)	172	(10.0)	702	(18.8)	242	(3.3)
Transfer out	1,017	(6.1)	825	(6.4)	333	(5.5)	13	(3.9)	309	(6.3)	170	(9.9)	192	(5.1)	324	(4.5)
Register during follow-up	80	(0.5)	69	(0.5)	34	(0.6)	6	(1.8)	20	(0.4)	9	(0.5)	11	(0.3)	49	(0.7)
Other reasons	25	(0.1)	21	(0.2)	5	(0.1)	2	(0.6)	6	(0.1)	8	(0.5)	4	(0.1)	50	(0.7)

* Based on the annual report database in 2017. ** Based on the annual report database in 2018.

LTBI : Latent Tuberculosis Infection

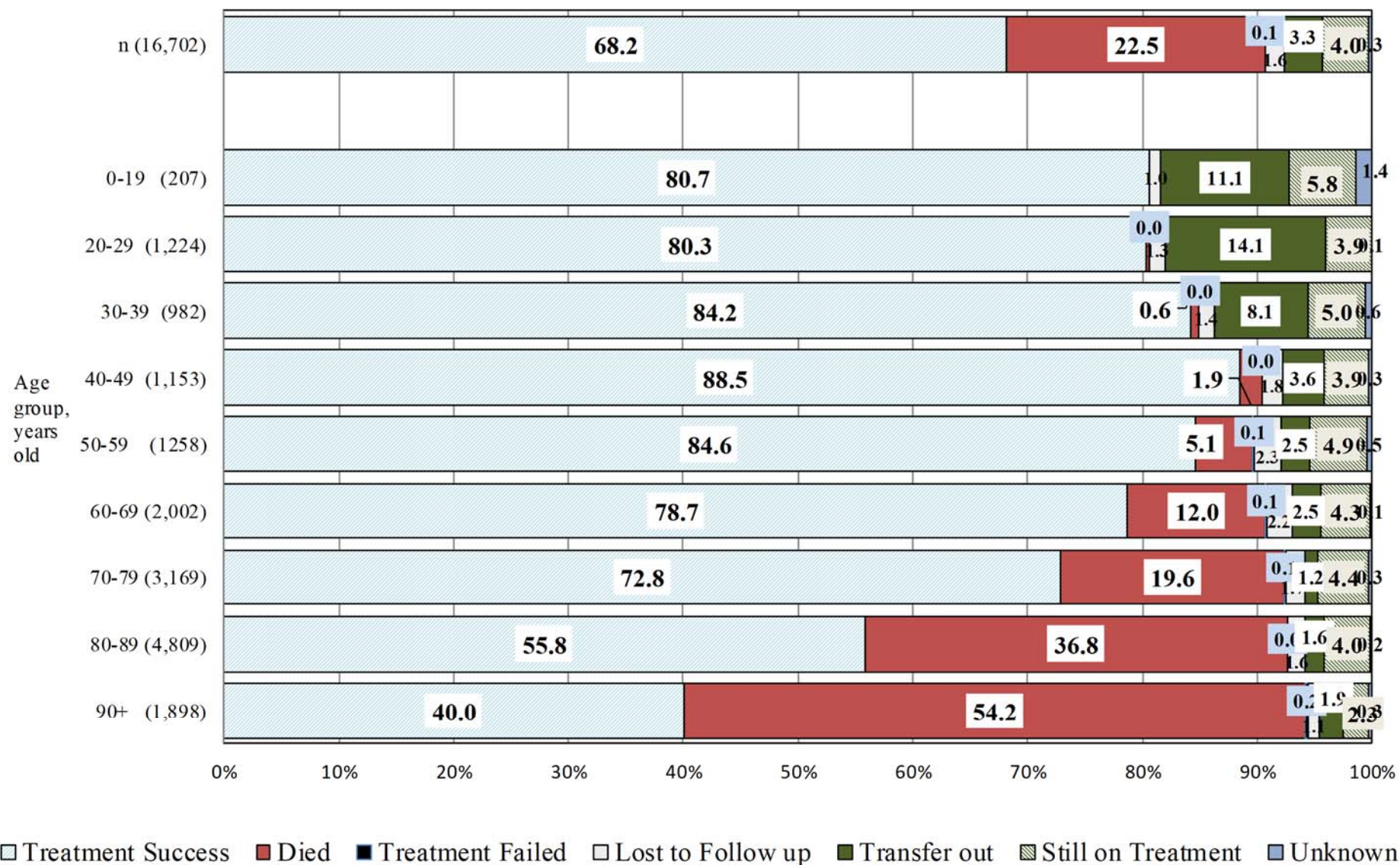


Fig. 3 Treatment outcomes of newly notified tuberculosis patients by age group, 2017 year cohort (%)

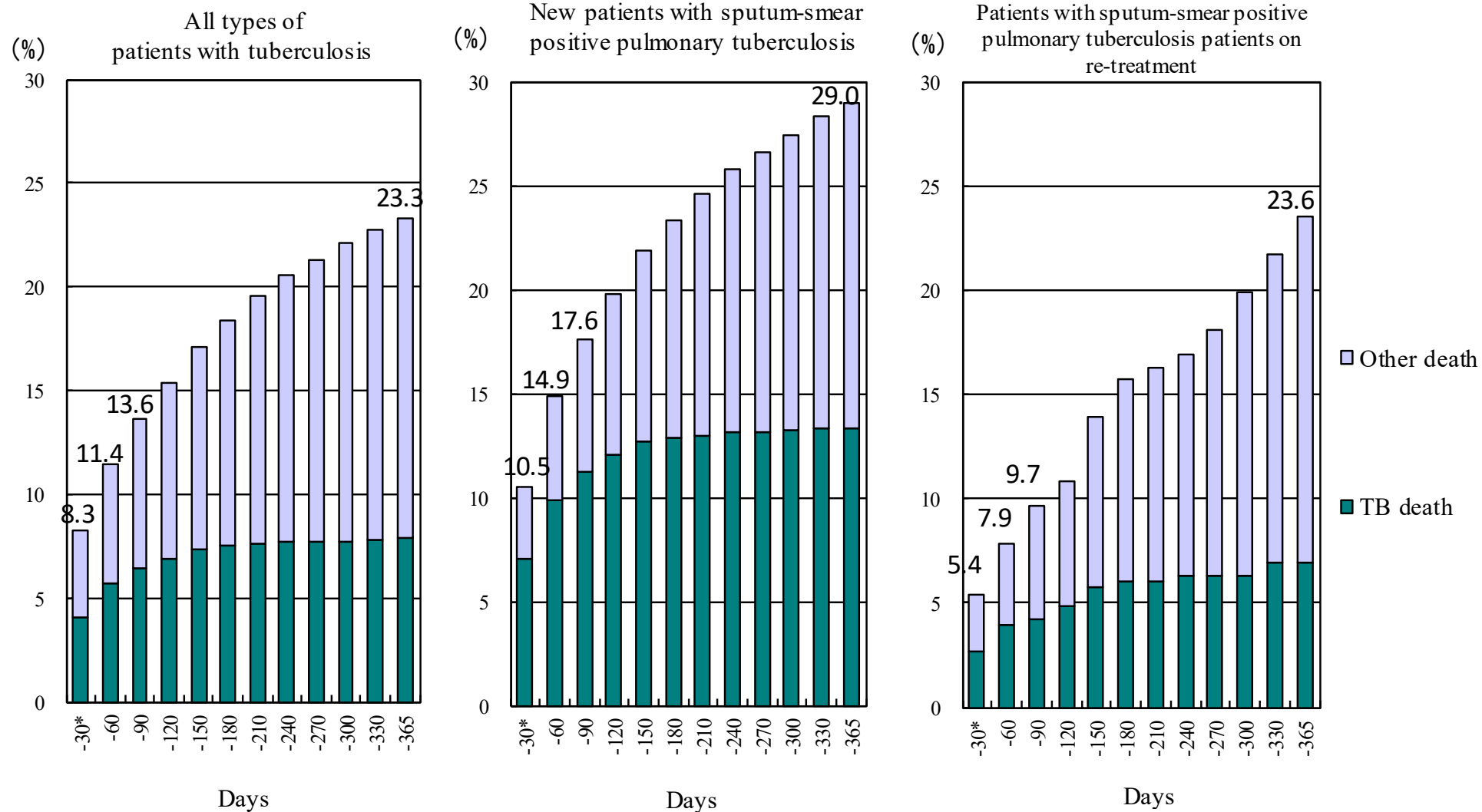


Fig. 4 Cumulative proportion of deaths by duration of treatment - Newly notified patients with tuberculosis in 2017

* Includes patients who died before the commencement of treatment.

TB: tuberculosis