



## Monthly Report of Tuberculosis Surveillance, Japan - March, 2019

The reporting and recording of tuberculosis (TB) and Latent TB Infection (LTBI) are managed at public health centers (PHCs) by the nationwide computerized TB surveillance system in Japan. A monthly report is compiled from the database automatically and regularly on 4<sup>th</sup> Friday of the next month, and an annual report is also produced much like the monthly report, but with sufficient time for data correction.

Tables and figures shown in the monthly reports are as follows.

### Figures

Figure 1. Number of newly notified TB cases by month, Japan, 2016-2019

Figure 2. Newly notified TB cases by sex and age, Japan, summation (Jan. - Mar.) 2019

Figure 3. Notification rate of TB cases by sex and age, Japan, summation (Jan. - Mar.) 2019

Figure 4. Notification rate of TB by prefecture, Japan, summation (Jan. - Mar.) 2019

Figure 5. Notification rate of TB by major city, Japan, summation (Jan. - Mar.) 2019

Figure 6. Number of LTBI, Japan, 2019

Figure 7. Number of LTBI by sex and age group, Japan, summation (Jan. - Mar.) 2016-2019

### Tables

Table 1. Newly notified TB cases and rates by sex and age, Japan, 2019

Table 2. Newly notified sputum smear positive pulmonary TB cases and rates by sex and age, Japan, 2019

Table 3. Newly notified TB cases and rates by prefecture, Japan, 2019

Table 4. Newly notified TB cases and rates by major city, Japan, 2019

Table 5. LTBI cases and rates by sex and age, Japan, 2019

Table 6. LTBI cases and rates by prefecture, Japan, 2019

Table 7. LTBI cases and rates by major city, Japan, 2019

Figure 1. Number of newly notified TB cases by month, Japan, 2016-2019

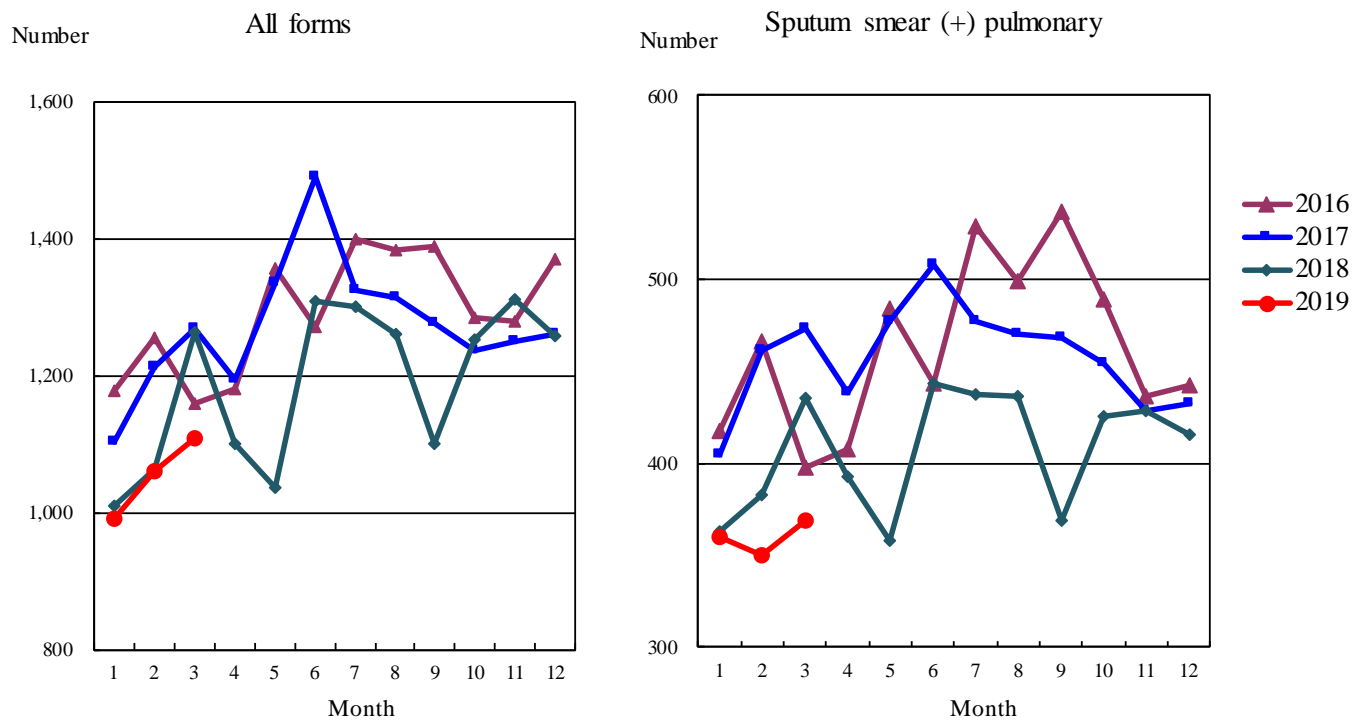


Figure 2. Newly notified TB patients by sex and age, Japan, summation (Jan.-Mar.) 2019

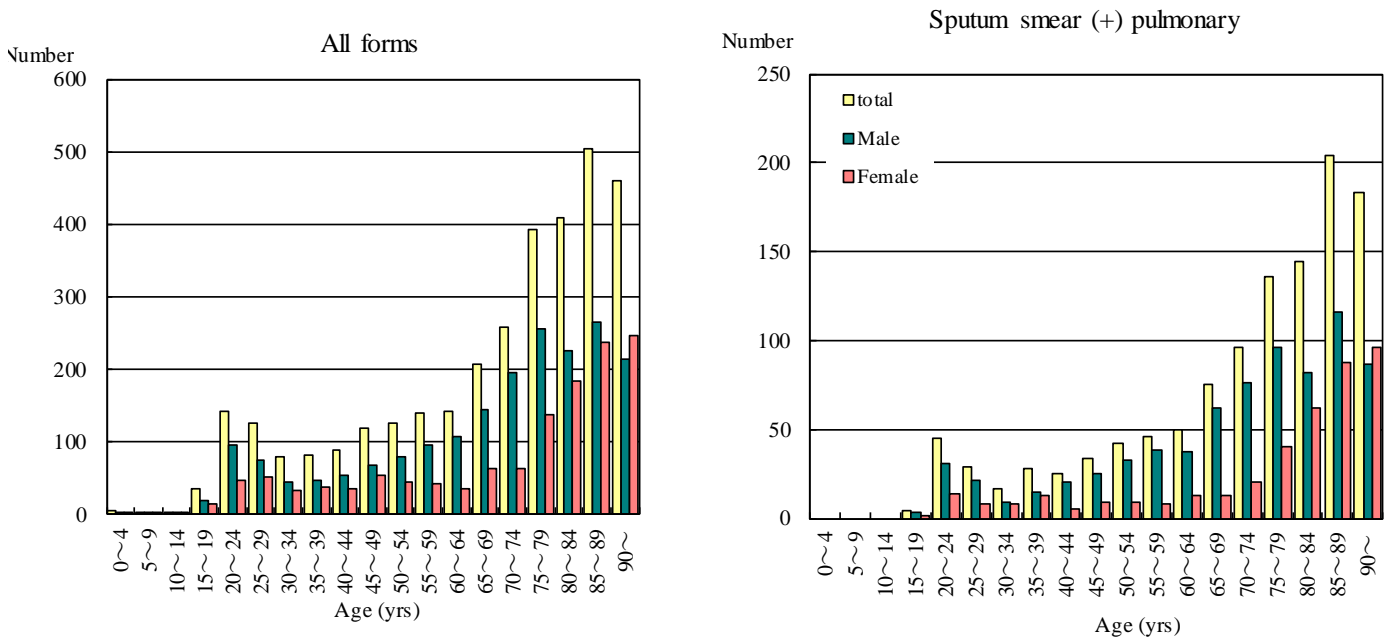


Figure 3. Notification rate of TB cases by sex and age, Japan, summation (Jan.-Mar.) 2019

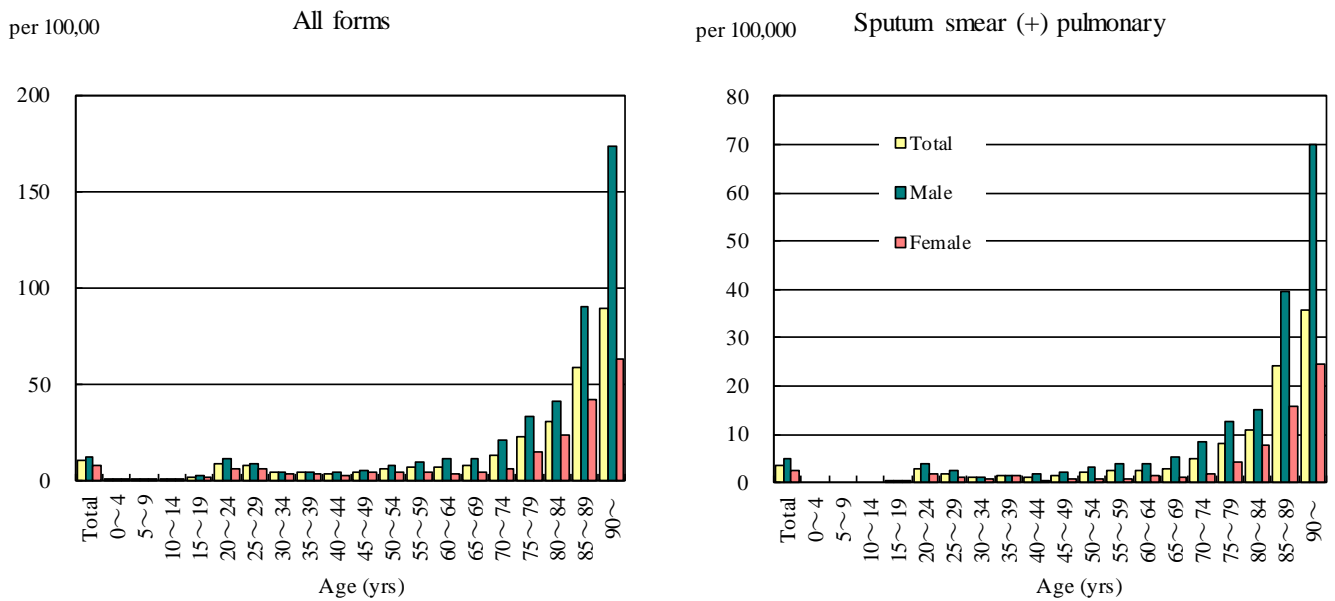


Figure 4. Notification rates of TB by prefecture, Japan, summation (Jan.-Mar.) 2019

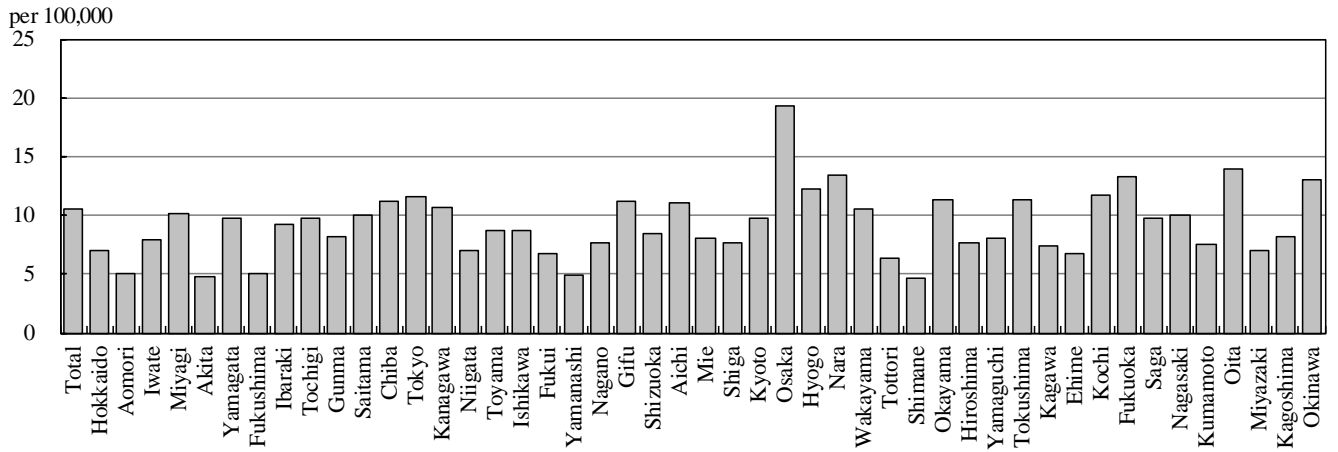


Figure 5. Notification rates of TB major city, Japan, summation (Jan.-Mar.) 2019

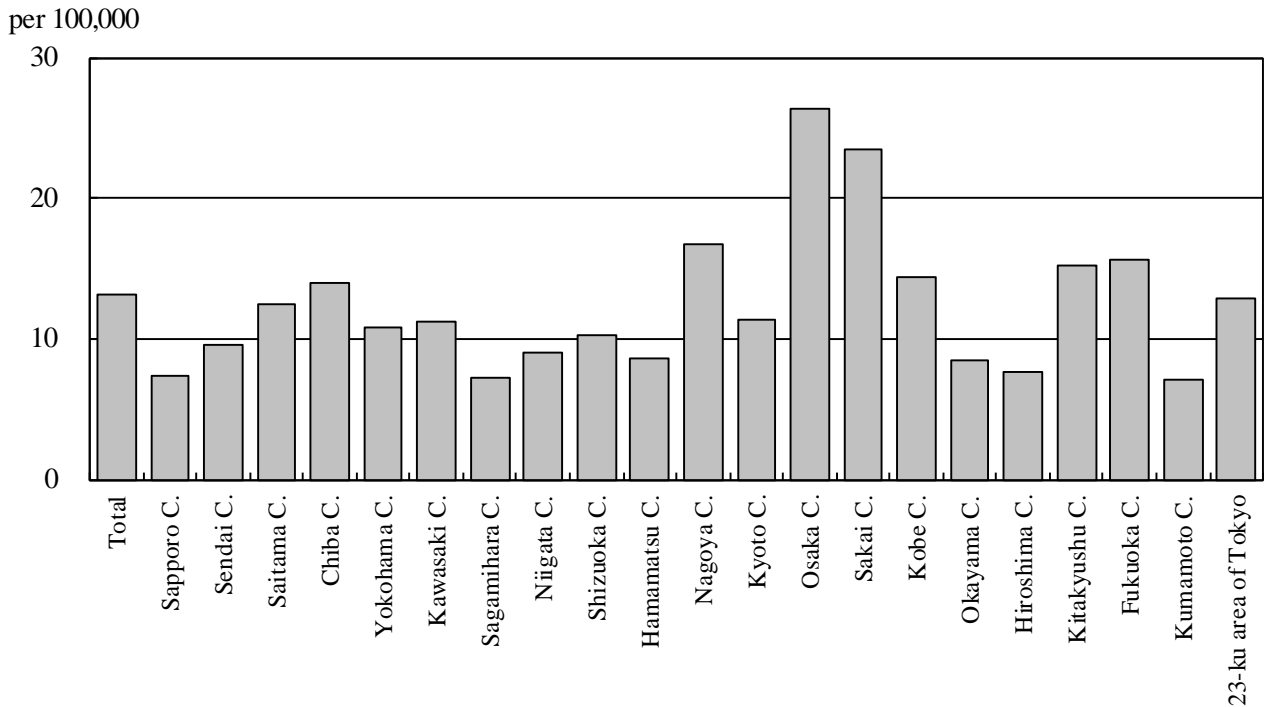


Figure 6. Number of LTBI, Japan, 2016-2019

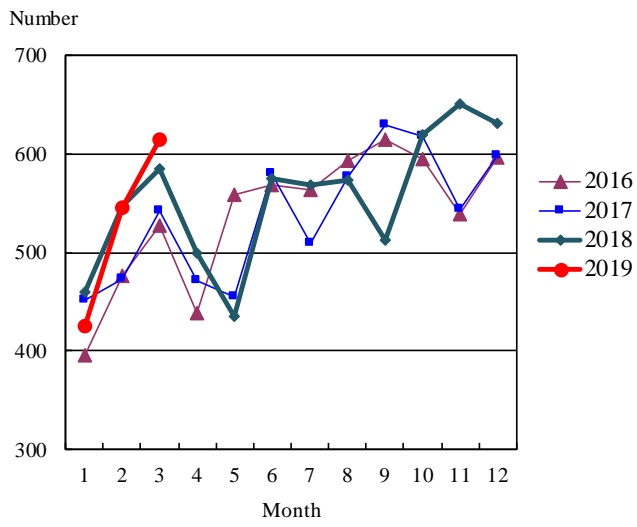


Figure 7. Number of LTBI by sex and age group, Japan, summation (Jan.-Mar.) 2019

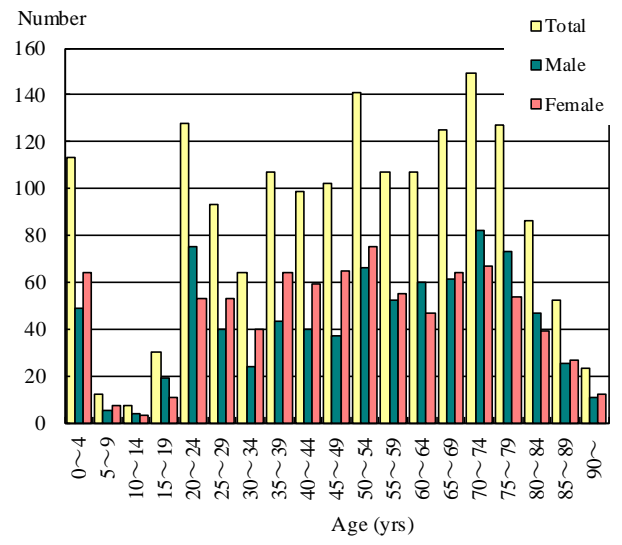


Table 1. Newly notified TB cases and rates by sex and age, Japan, 2019

	Mar.			Summation (Jan.-Mar.)			Notification rate (per 100,000)		
	Total	Male	Female	Total	Male	Female	Total	Male	Female
Total	1,108	679	429	3,326	1,992	1,334	10.5	12.9	8.2
0~4	2	0	2	5	2	3	0.4	0.3	0.5
5~9	0	0	0	2	1	1	0.2	0.1	0.2
10~14	2	1	1	3	2	1	0.2	0.3	0.2
15~19	15	7	8	35	20	15	2.3	2.6	2.1
20~24	43	28	15	143	95	48	9.2	11.9	6.4
25~29	34	22	12	127	75	52	8.1	9.3	6.8
30~34	24	15	9	79	45	34	4.4	5.0	3.9
35~39	30	19	11	83	46	37	4.2	4.6	3.8
40~44	28	20	8	90	55	35	3.8	4.6	3.0
45~49	40	26	14	120	67	53	5.1	5.6	4.5
50~54	51	39	12	125	80	45	6.1	7.8	4.4
55~59	44	29	15	139	96	43	7.3	10.1	4.5
60~64	53	36	17	143	108	35	7.3	11.2	3.5
65~69	68	43	25	207	144	63	8.3	12.0	4.9
70~74	97	71	26	259	195	64	13.4	21.5	6.2
75~79	139	97	42	393	255	138	23.3	33.9	14.8
80~84	147	84	63	409	225	184	30.9	41.7	23.5
85~89	154	79	75	503	266	237	59.3	90.7	42.7
90~	137	63	74	461	215	246	89.8	173.5	63.1

Temporary registrants = 42, Total of registrants and temporary registrants = 1,150

Rate: summation / (population\*1/12)\*100,000

Population: as of 1st Oct. 2017

Table 2. Newly notified sputum smear positive pulmonary TB cases and rates by sex and age, Japan, 2019

	Mar.			Summation (Jan.-Mar.)			Notification rate (per 100,000)		
	Total	Male	Female	Total	Male	Female	Total	Male	Female
Total	369	252	117	1,158	751	407	3.7	4.9	2.5
0~4	0	0	0	0	0	0	0.0	0.0	0.0
5~9	0	0	0	0	0	0	0.0	0.0	0.0
10~14	0	0	0	0	0	0	0.0	0.0	0.0
15~19	1	1	0	4	3	1	0.3	0.4	0.1
20~24	13	10	3	45	31	14	2.9	3.9	1.9
25~29	8	5	3	29	21	8	1.8	2.6	1.0
30~34	6	4	2	17	9	8	1.0	1.0	0.9
35~39	14	7	7	28	15	13	1.4	1.5	1.3
40~44	10	8	2	25	20	5	1.1	1.7	0.4
45~49	14	12	2	34	25	9	1.4	2.1	0.8
50~54	17	17	0	42	33	9	2.1	3.2	0.9
55~59	14	10	4	46	38	8	2.4	4.0	0.8
60~64	19	12	7	50	37	13	2.6	3.8	1.3
65~69	27	21	6	75	62	13	3.0	5.2	1.0
70~74	32	27	5	96	76	20	5.0	8.4	1.9
75~79	53	39	14	136	96	40	8.1	12.8	4.3
80~84	51	30	21	144	82	62	10.9	15.2	7.9
85~89	46	28	18	204	116	88	24.0	39.5	15.8
90~	44	21	23	183	87	96	35.6	70.2	24.6

Rate: summation / (population\*1/12)\*100,000

Population: as of 1st Oct. 2017

Table 3. Newly notified TB cases and rates by prefecture, Japan, 2019

	Mar.		Summation (Jan.-Mar.)		Notification rate (per 100,000)	
	Newly notified TB	Sputum smear (+)	Newly notified TB	Sputum smear (+)	Newly notified TB	Sputum smear (+)
Total	1,108	369	3,326	1,158	10.5	3.7
Hokkaido	33	9	94	33	7.1	2.5
Aomori	4	1	16	5	5.0	1.6
Iwate	7	2	25	10	8.0	3.2
Miyagi	21	5	59	16	10.2	2.8
Akita	2	1	12	6	4.8	2.4
Yamagata	13	6	27	15	9.8	5.4
Fukushima	5	1	24	8	5.1	1.7
Ibaraki	23	7	67	20	9.3	2.8
Tochigi	8	2	48	19	9.8	3.9
Gunma	11	3	40	12	8.2	2.4
Saitama	69	23	184	62	10.1	3.4
Chiba	63	27	175	57	11.2	3.7
Tokyo	123	45	397	144	11.6	4.2
Kanagawa	81	25	245	82	10.7	3.6
Niigata	8	2	40	8	7.1	1.4
Toyama	6	2	23	3	8.7	1.1
Ishikawa	7	3	25	9	8.7	3.1
Fukui	4	0	13	0	6.7	0.0
Yamanashi	3	2	10	5	4.9	2.4
Nagano	15	7	40	13	7.7	2.5
Gifu	16	10	56	21	11.2	4.2
Shizuoka	25	12	77	37	8.4	4.0
Aichi	80	28	209	70	11.1	3.7
Mie	15	5	36	13	8.0	2.9
Shiga	9	2	27	11	7.6	3.1
Kyoto	19	9	63	26	9.7	4.0
Osaka	153	53	425	164	19.3	7.4
Hyogo	58	14	168	66	12.2	4.8
Nara	17	5	45	15	13.4	4.5
Wakayama	11	6	25	11	10.6	4.7
Tottori	4	0	9	1	6.4	0.7
Shimane	0	0	8	3	4.7	1.8
Okayama	17	4	54	14	11.3	2.9
Hiroshima	18	3	54	14	7.6	2.0
Yamaguchi	9	2	28	6	8.1	1.7
Tokushima	4	3	21	9	11.3	4.8
Kagawa	8	3	18	5	7.4	2.1
Ehime	10	2	23	7	6.7	2.1
Kochi	8	1	21	5	11.8	2.8
Fukuoka	51	13	169	50	13.2	3.9
Saga	4	1	20	7	9.7	3.4
Nagasaki	11	5	34	13	10.0	3.8
Kumamoto	13	3	33	8	7.5	1.8
Oita	16	6	40	16	13.9	5.6
Miyazaki	4	1	19	9	7.0	3.3
Kagoshima	10	4	33	16	8.1	3.9
Okinawa	12	1	47	14	13.0	3.9

Rate: summation / (population\*1/12)\*100,000

Population: as of 1st Oct. 2017



Table 4. Newly notified TB cases and rates by major city, Japan, 2019

	Mar.		Summation (Jan.-Mar.)		Notification Rate (per 100,000)	
	Newly notified TB	Sputum Smear(+)	Newly notified TB	Sputum Smear(+)	Newly notified TB	Sputum Smear(+)
Total	397	136	1,219	423	13.2	4.6
Sapporo City	13	6	36	13	7.3	2.6
Sendai City	8	2	26	8	9.6	2.9
Saitama City	11	1	40	13	12.4	4.0
Chiba City	11	5	34	11	13.9	4.5
Yokohama City	33	10	101	30	10.8	3.2
Kawasaki City	16	5	42	14	11.2	3.7
Sagamihara City	4	2	13	5	7.2	2.8
Niigata City	5	1	18	2	9.0	1.0
Shizuoka City	6	4	18	10	10.2	5.7
Hamamatsu City	7	4	17	6	8.5	3.0
Nagoya City	32	13	97	35	16.8	6.0
Kyoto City	18	8	42	19	11.4	5.2
Osaka City	60	25	179	74	26.4	10.9
Sakai City	18	6	49	21	23.5	10.1
Kobe City	18	3	55	17	14.4	4.4
Okayama City	5	1	15	2	8.5	1.1
Hiroshima City	8	1	23	3	7.7	1.0
Kitakyushu City	10	3	36	11	15.1	4.6
Fukuoka City	19	3	61	17	15.6	4.3
Kumamoto City	6	1	13	4	7.0	2.2
23-ku area of Tokyo	89	32	304	108	12.9	4.6

Rate: summation / (population\*1/12)\*100,000

Population: as of 1st Oct. 2017

Major city: city with a population of one million or more.

Table 4 is a re-count of Table 3.

Table 5. LTBI cases and rates by sex and age, Japan, 2019

	Mar.			Summation (Jan.-Mar.)			(Ratio) LTBI/Newly notified cases		
	Total	Male	Female	Total	Male	Female	Total	Male	Female
Total	615	288	327	1,672	813	859	0.5	0.4	0.6
0~4	29	12	17	113	49	64	22.6	24.5	21.3
5~9	6	3	3	12	5	7	6.0	5.0	7.0
10~14	0	0	0	7	4	3	2.3	2.0	3.0
15~19	7	5	2	30	19	11	0.9	1.0	0.7
20~24	51	26	25	128	75	53	0.9	0.8	1.1
25~29	37	14	23	93	40	53	0.7	0.5	1.0
30~34	30	13	17	64	24	40	0.8	0.5	1.2
35~39	40	14	26	107	43	64	1.3	0.9	1.7
40~44	37	11	26	99	40	59	1.1	0.7	1.7
45~49	39	15	24	102	37	65	0.9	0.6	1.2
50~54	60	28	32	141	66	75	1.1	0.8	1.7
55~59	37	17	20	107	52	55	0.8	0.5	1.3
60~64	40	20	20	107	60	47	0.7	0.6	1.3
65~69	49	29	20	125	61	64	0.6	0.4	1.0
70~74	50	24	26	149	82	67	0.6	0.4	1.0
75~79	43	25	18	127	73	54	0.3	0.3	0.4
80~84	34	20	14	86	47	39	0.2	0.2	0.2
85~89	19	9	10	52	25	27	0.1	0.1	0.1
90~	7	3	4	23	11	12	0.0	0.1	0.0

LTBI: latent TB Infection

Number of LTBI is not included in the newly notified TB patients

Table 6. LTBI cases and rates by prefecture, Japan, 2019

	Mar.	Summation (Jan.-Mar.)	
	LTBI	LTBI	(Ratio) LTBI /new TB
Total	615	1,672	0.50
Hokkaido	13	47	0.50
Aomori	11	25	1.56
Iwate	11	24	0.96
Miyagi	14	43	0.73
Akita	5	10	0.83
Yamagata	9	13	0.48
Fukushima	0	4	0.17
Ibaraki	13	51	0.76
Tochigi	7	17	0.35
Gunma	8	15	0.38
Saitama	34	120	0.65
Chiba	32	84	0.48
Tokyo	79	213	0.54
Kanagawa	43	116	0.47
Niigata	6	14	0.35
Toyama	5	12	0.52
Ishikawa	8	18	0.72
Fukui	0	3	0.23
Yamanashi	4	5	0.50
Nagano	15	35	0.88
Gifu	10	21	0.38
Shizuoka	6	19	0.25
Aichi	40	101	0.48
Mie	11	16	0.44
Shiga	0	17	0.63
Kyoto	14	43	0.68
Osaka	55	171	0.40
Hyogo	29	76	0.45
Nara	7	14	0.31
Wakayama	3	6	0.24
Tottori	0	2	0.22
Shimane	0	2	0.25
Okayama	17	37	0.69
Hiroshima	8	35	0.65
Yamaguchi	5	11	0.39
Tokushima	4	7	0.33
Kagawa	2	7	0.39
Ehime	2	7	0.30
Kochi	2	7	0.33
Fukuoka	41	91	0.54
Saga	2	7	0.35
Nagasaki	2	7	0.21
Kumamoto	4	10	0.30
Oita	11	24	0.60
Miyazaki	3	15	0.79
Kagoshima	3	20	0.61
Okinawa	17	30	0.64

LTBI: Latent TB Infection

Number of LTBI is not included in the newly notified TB patients.

Table 7. LTBI cases and rates by major city, Japan, 2019

	Mar.	Summation (Jan.-Mar.)	
	LTBI	LTBI	(Ratio) LTBI / new TB
Total	211	589	0.48
Sapporo City	4	23	0.64
Sendai City	3	22	0.85
Saitama City	7	18	0.45
Chiba City	5	6	0.18
Yokohama City	9	25	0.25
Kawasaki City	10	39	0.93
Sagamihara City	5	9	0.69
Niigata City	3	6	0.33
Shizuoka City	2	4	0.22
Hamamatsu City	0	2	0.12
Nagoya City	16	46	0.47
Kyoto City	9	28	0.67
Osaka City	21	81	0.45
Sakai City	4	11	0.22
Kobe City	9	23	0.42
Okayama City	11	20	1.33
Hiroshima City	4	12	0.52
Kitakyushu City	4	12	0.33
Fukuoka City	18	36	0.59
Kumamoto City	2	5	0.38
23-ku area of Tokyo	65	161	0.53

LTBI: Latent TB Infection

Number of LTBI is not included in the newly notified TB patients,

Major city: city with a population of one million or more

Table 7 is a re-count of Table 6