



Monthly Report of Tuberculosis Surveillance, Japan - April, 2019

The reporting and recording of tuberculosis (TB) and Latent TB Infection (LTBI) are managed at public health centers (PHCs) by the nationwide computerized TB surveillance system in Japan. A monthly report is compiled from the database automatically and regularly on 4th Friday of the next month, and an annual report is also produced much like the monthly report, but with sufficient time for data correction.

Tables and figures shown in the monthly reports are as follows.

Figures

Figure 1. Number of newly notified TB cases by month, Japan, 2016-2019

Figure 2. Newly notified TB cases by sex and age, Japan, summation (Jan. - Apr.) 2019

Figure 3. Notification rate of TB cases by sex and age, Japan, summation (Jan. - Apr.) 2019

Figure 4. Notification rate of TB by prefecture, Japan, summation (Jan. - Apr.) 2019

Figure 5. Notification rate of TB by major city, Japan, summation (Jan. - Apr.) 2019

Figure 6. Number of LTBI, Japan, 2019

Figure 7. Number of LTBI by sex and age group, Japan, summation (Jan. - Apr.) 2016-2019

Tables

Table 1. Newly notified TB cases and rates by sex and age, Japan, 2019

Table 2. Newly notified sputum smear positive pulmonary TB cases and rates by sex and age, Japan, 2019

Table 3. Newly notified TB cases and rates by prefecture, Japan, 2019

Table 4. Newly notified TB cases and rates by major city, Japan, 2019

Table 5. LTBI cases and rates by sex and age, Japan, 2019

Table 6. LTBI cases and rates by prefecture, Japan, 2019

Table 7. LTBI cases and rates by major city, Japan, 2019

Figure 1. Number of newly notified TB cases by month, Japan, 2016-2019

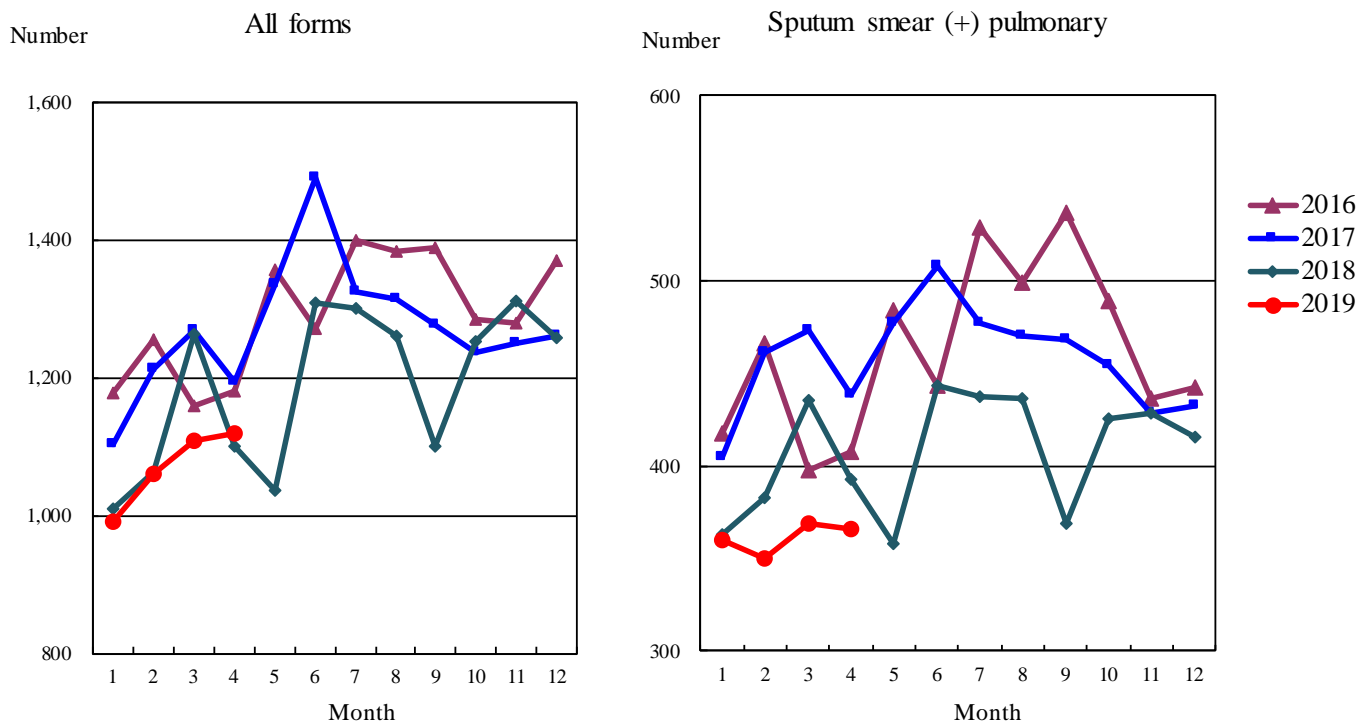


Figure 2. Newly notified TB patients by sex and age, Japan, summation (Jan.-Apr.) 2019

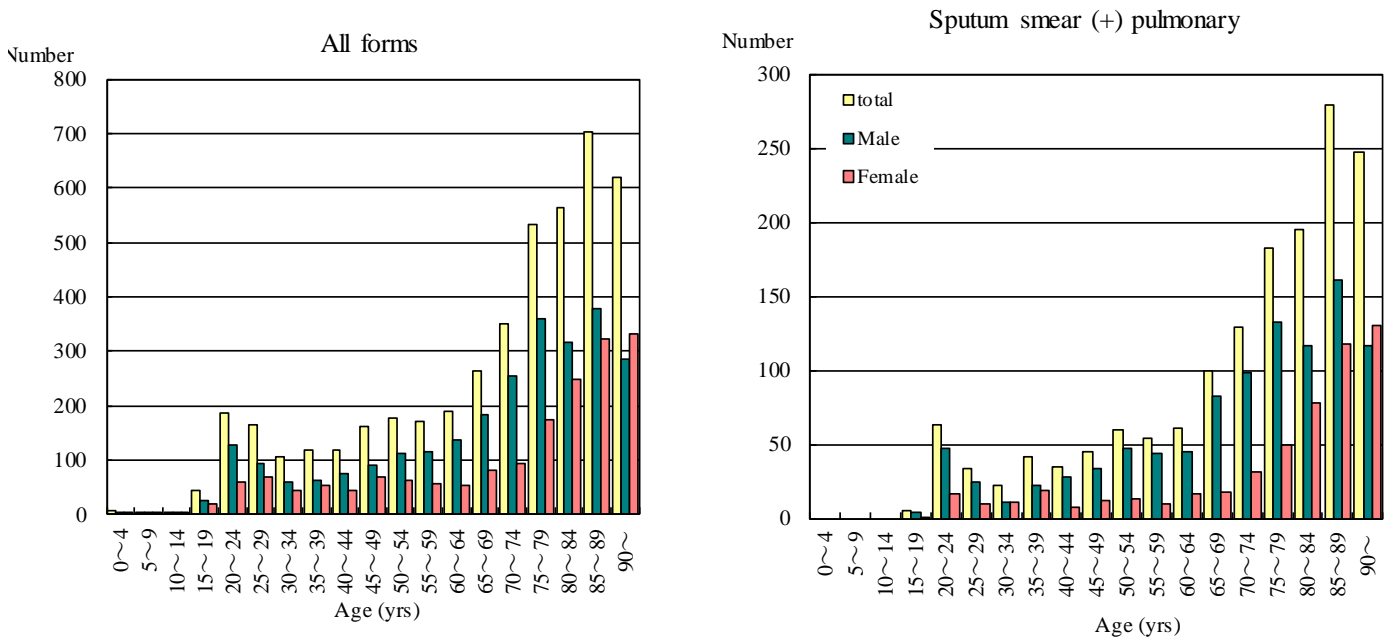


Figure 3. Notification rate of TB cases by sex and age, Japan, summation (Jan.-Apr.) 2019

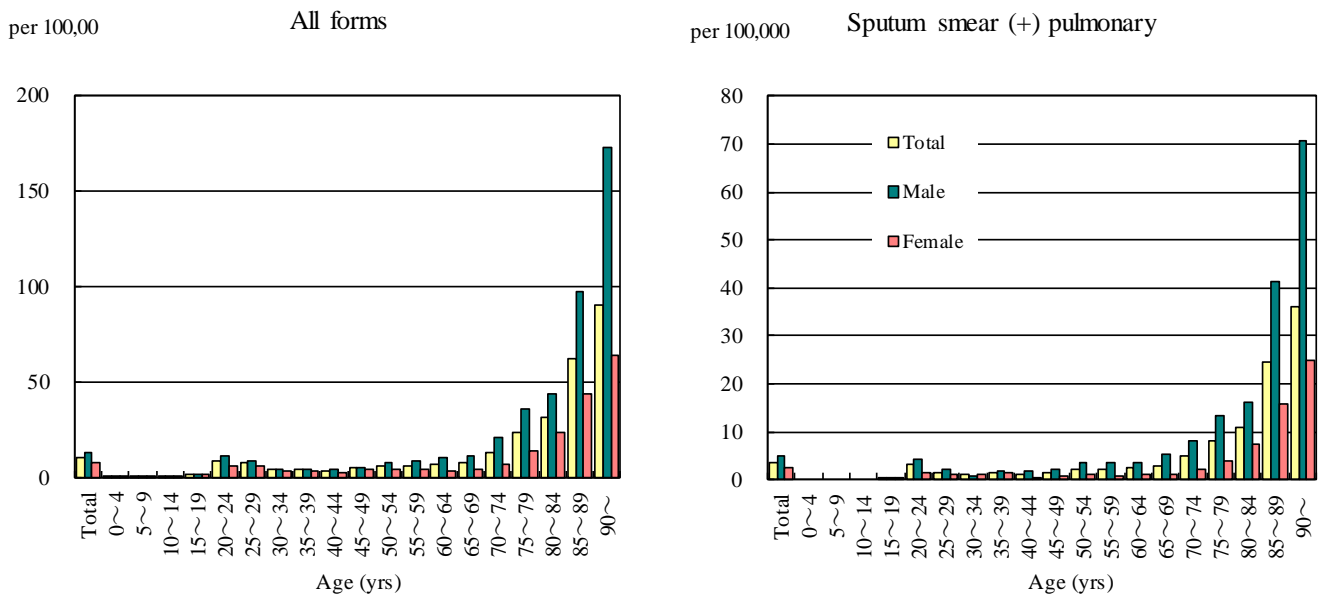


Figure 4. Notification rates of TB by prefecture, Japan, summation (Jan.-Apr.) 2019

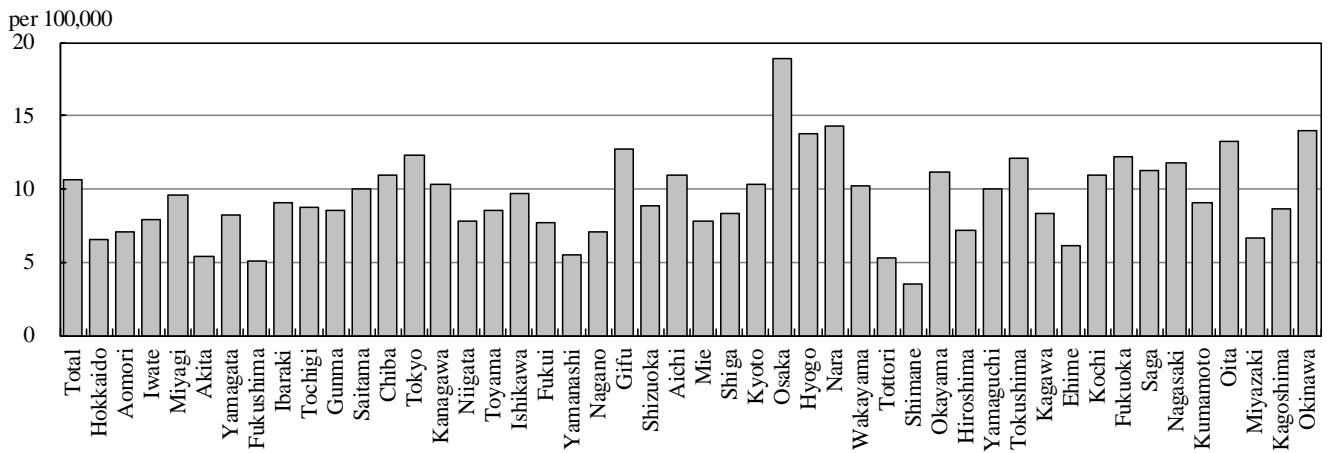


Figure 5. Notification rates of TB major city, Japan, summation (Jan.-Apr.) 2019

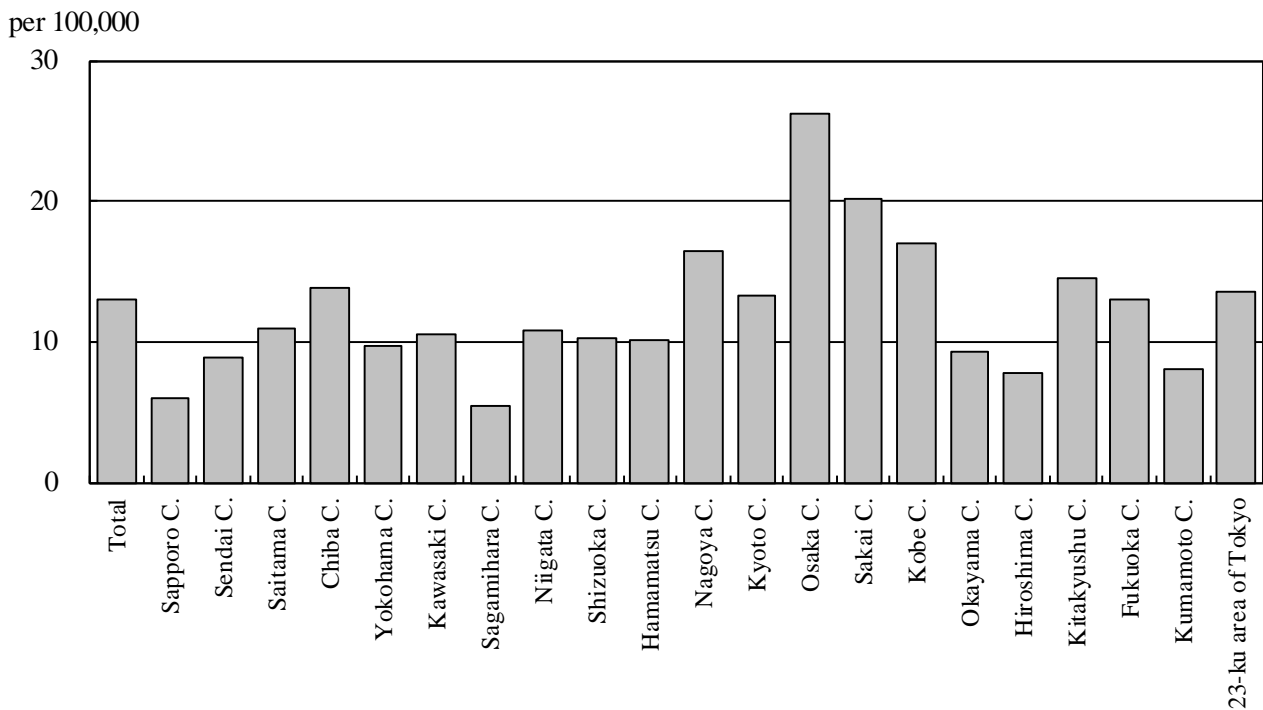


Figure 6. Number of LTBI, Japan, 2016-2019

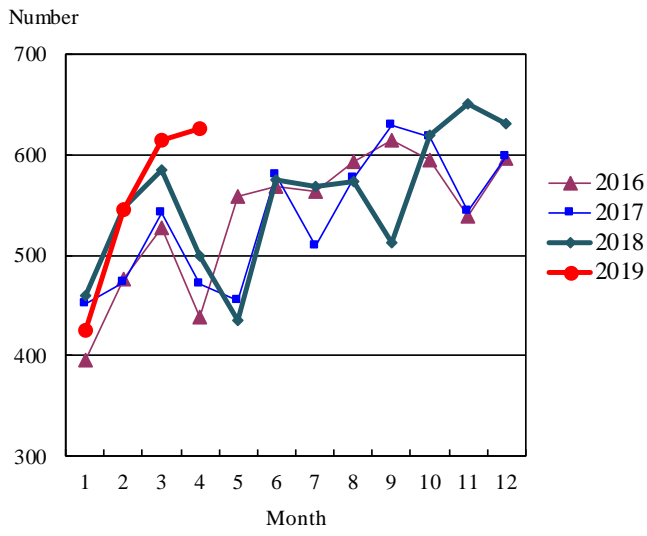


Figure 7. Number of LTBI by sex and age group, Japan, summation (Jan.-Apr.) 2019

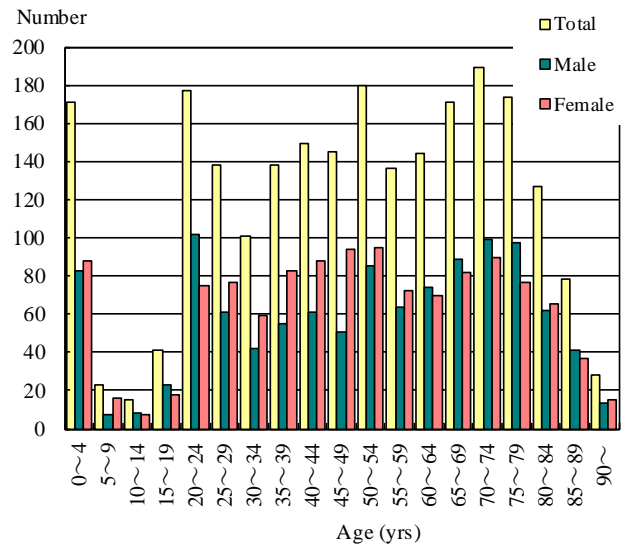


Table 1. Newly notified TB cases and rates by sex and age, Japan, 2019

	Apr.			Summation (Jan.-Apr.)			Notification rate (per 100,000)		
	Total	Male	Female	Total	Male	Female	Total	Male	Female
Total	1,118	678	440	4,483	2,690	1,793	10.6	13.1	8.3
0~4	2	1	1	7	3	4	0.4	0.4	0.5
5~9	1	1	0	3	2	1	0.2	0.2	0.1
10~14	1	1	0	4	3	1	0.2	0.3	0.1
15~19	9	5	4	44	25	19	2.2	2.4	2.0
20~24	44	30	14	188	127	61	9.1	11.9	6.1
25~29	34	18	16	164	95	69	7.8	8.8	6.7
30~34	26	16	10	105	61	44	4.4	5.1	3.8
35~39	34	18	16	118	64	54	4.5	4.8	4.2
40~44	29	20	9	119	75	44	3.8	4.7	2.8
45~49	39	24	15	162	92	70	5.1	5.8	4.5
50~54	46	29	17	176	112	64	6.5	8.2	4.7
55~59	33	19	14	172	114	58	6.8	9.0	4.6
60~64	49	32	17	190	138	52	7.3	10.8	3.9
65~69	58	41	17	263	182	81	8.0	11.4	4.7
70~74	87	59	28	350	256	94	13.6	21.2	6.8
75~79	139	103	36	533	360	173	23.7	35.9	13.9
80~84	150	87	63	564	317	247	32.0	44.1	23.6
85~89	189	106	83	703	379	324	62.1	96.9	43.7
90~	148	68	80	618	285	333	90.2	172.4	64.1

Temporary registrants = 87, Total of registrants and temporary registrants = 1,205

Rate: summation / (population*1/12)*100,000

Population: as of 1st Oct. 2017

Table 2. Newly notified sputum smear positive pulmonary TB cases and rates by sex and age, Japan, 2019

	Apr.			Summation (Jan.-Apr.)			Notification rate (per 100,000)		
	Total	Male	Female	Total	Male	Female	Total	Male	Female
Total	366	245	121	1,552	1,013	539	3.7	4.9	2.5
0~4	0	0	0	0	0	0	0.0	0.0	0.0
5~9	0	0	0	0	0	0	0.0	0.0	0.0
10~14	0	0	0	0	0	0	0.0	0.0	0.0
15~19	1	1	0	5	4	1	0.3	0.4	0.1
20~24	17	15	2	63	47	16	3.0	4.4	1.6
25~29	6	4	2	34	24	10	1.6	2.2	1.0
30~34	5	2	3	22	11	11	0.9	0.9	0.9
35~39	13	7	6	41	22	19	1.6	1.7	1.5
40~44	10	8	2	35	28	7	1.1	1.8	0.5
45~49	8	6	2	45	33	12	1.4	2.1	0.8
50~54	16	12	4	60	47	13	2.2	3.4	1.0
55~59	10	7	3	54	44	10	2.1	3.5	0.8
60~64	11	8	3	61	45	16	2.3	3.5	1.2
65~69	25	20	5	100	82	18	3.0	5.1	1.1
70~74	30	21	9	129	98	31	5.0	8.1	2.3
75~79	43	34	9	182	133	49	8.1	13.3	3.9
80~84	45	30	15	195	117	78	11.1	16.3	7.5
85~89	65	41	24	279	161	118	24.6	41.2	15.9
90~	61	29	32	247	117	130	36.1	70.8	25.0

Rate: summation / (population*1/12)*100,000

Population: as of 1st Oct. 2017

Table 3. Newly notified TB cases and rates by prefecture, Japan, 2019

	Apr.		Summation (Jan.-Apr.)		Notification rate (per 100,000)	
	Newly notified TB	Sputum smear (+)	Newly notified TB	Sputum smear (+)	Newly notified TB	Sputum smear (+)
Total	1,118	366	4,483	1,552	10.6	3.7
Hokkaido	22	4	116	37	6.5	2.1
Aomori	14	6	30	11	7.0	2.6
Iwate	8	1	33	11	7.9	2.6
Miyagi	16	6	74	21	9.6	2.7
Akita	6	2	18	8	5.4	2.4
Yamagata	2	0	30	15	8.2	4.1
Fukushima	8	1	32	9	5.1	1.4
Ibaraki	20	4	87	24	9.0	2.5
Tochigi	7	3	57	23	8.7	3.5
Gunma	16	4	56	16	8.6	2.4
Saitama	59	20	244	81	10.0	3.3
Chiba	54	25	228	82	11.0	3.9
Tokyo	158	53	561	203	12.3	4.4
Kanagawa	64	20	314	104	10.3	3.4
Niigata	17	2	59	11	7.8	1.5
Toyama	7	3	30	6	8.5	1.7
Ishikawa	12	3	37	12	9.7	3.1
Fukui	6	3	20	3	7.7	1.2
Yamanashi	5	2	15	7	5.5	2.6
Nagano	9	5	49	19	7.1	2.7
Gifu	29	8	85	31	12.7	4.6
Shizuoka	30	13	108	50	8.8	4.1
Aichi	62	19	275	89	11.0	3.5
Mie	11	3	47	16	7.8	2.7
Shiga	11	3	39	14	8.3	3.0
Kyoto	26	5	89	32	10.3	3.7
Osaka	134	51	555	216	18.9	7.3
Hyogo	82	22	252	89	13.7	4.9
Nara	18	6	64	22	14.2	4.9
Wakayama	8	2	32	13	10.2	4.1
Tottori	1	1	10	2	5.3	1.1
Shimane	0	0	8	3	3.5	1.3
Okayama	15	10	71	25	11.2	3.9
Hiroshima	13	7	68	23	7.2	2.4
Yamaguchi	12	3	46	12	10.0	2.6
Tokushima	9	0	30	9	12.1	3.6
Kagawa	8	5	27	10	8.4	3.1
Ehime	5	2	28	10	6.2	2.2
Kochi	5	0	26	5	10.9	2.1
Fukuoka	40	9	207	61	12.2	3.6
Saga	11	3	31	10	11.3	3.6
Nagasaki	13	2	53	17	11.7	3.8
Kumamoto	20	5	53	13	9.0	2.2
Oita	11	7	51	23	13.3	6.0
Miyazaki	3	3	24	12	6.6	3.3
Kagoshima	11	4	47	21	8.7	3.9
Okinawa	20	6	67	21	13.9	4.4

Rate: summation / (population*1/12)*100,000

Population: as of 1st Oct. 2017

Table 4. Newly notified TB cases and rates by major city, Japan, 2019

	Apr.		Summation (Jan.-Apr.)		Notification Rate (per 100,000)	
	Newly notified TB	Sputum Smear(+)	Newly notified TB	Sputum Smear(+)	Newly notified TB	Sputum Smear(+)
Total	388	133	1,614	564	13.1	4.6
Sapporo City	3	1	39	14	6.0	2.1
Sendai City	7	2	32	9	8.8	2.5
Saitama City	6	2	47	15	10.9	3.5
Chiba City	11	7	45	18	13.8	5.5
Yokohama City	19	7	121	38	9.7	3.1
Kawasaki City	11	3	53	17	10.6	3.4
Sagamihara City	0	0	13	5	5.4	2.1
Niigata City	11	2	29	4	10.8	1.5
Shizuoka City	6	2	24	12	10.2	5.1
Hamamatsu City	10	2	27	8	10.2	3.0
Nagoya City	30	12	127	47	16.5	6.1
Kyoto City	23	5	65	25	13.2	5.1
Osaka City	59	20	237	94	26.2	10.4
Sakai City	7	3	56	24	20.1	8.6
Kobe City	32	10	87	27	17.0	5.3
Okayama City	5	4	22	7	9.3	3.0
Hiroshima City	7	5	31	9	7.8	2.3
Kitakyushu City	12	2	46	13	14.5	4.1
Fukuoka City	7	2	68	19	13.0	3.6
Kumamoto City	7	2	20	6	8.1	2.4
23-ku area of Tokyo	115	40	425	153	13.5	4.9

Rate: summation / (population*1/12)*100,000

Population: as of 1st Oct. 2017

Major city: city with a population of one million or more.

Table 4 is a re-count of Table 3.

Table 5. LTBI cases and rates by sex and age, Japan, 2019

	Apr.			Summation (Jan.-Apr.)			(Ratio) LTBI/Newly notified cases		
	Total	Male	Female	Total	Male	Female	Total	Male	Female
Total	626	292	334	2,325	1,117	1,208	0.5	0.4	0.7
0~4	55	32	23	171	83	88	24.4	27.7	22.0
5~9	11	2	9	23	7	16	7.7	3.5	16.0
10~14	8	4	4	15	8	7	3.8	2.7	7.0
15~19	11	4	7	41	23	18	0.9	0.9	0.9
20~24	47	26	21	177	102	75	0.9	0.8	1.2
25~29	43	21	22	138	61	77	0.8	0.6	1.1
30~34	36	18	18	101	42	59	1.0	0.7	1.3
35~39	29	11	18	138	55	83	1.2	0.9	1.5
40~44	48	21	27	149	61	88	1.3	0.8	2.0
45~49	41	13	28	145	51	94	0.9	0.6	1.3
50~54	39	19	20	180	85	95	1.0	0.8	1.5
55~59	28	12	16	136	64	72	0.8	0.6	1.2
60~64	36	13	23	144	74	70	0.8	0.5	1.3
65~69	45	27	18	171	89	82	0.7	0.5	1.0
70~74	39	18	21	189	99	90	0.5	0.4	1.0
75~79	44	21	23	174	97	77	0.3	0.3	0.4
80~84	38	14	24	127	62	65	0.2	0.2	0.3
85~89	24	15	9	78	41	37	0.1	0.1	0.1
90~	4	1	3	28	13	15	0.0	0.0	0.0

LTBI: latent TB Infection

Number of LTBI is not included in the newly notified TB patients

Table 6. LTBI cases and rates by prefecture, Japan, 2019

	Apr.	Summation (Jan.-Apr.)	
	LTBI	LTBI	(Ratio) LTBI /new TB
Total	626	2,325	0.52
Hokkaido	11	60	0.52
Aomori	4	29	0.97
Iwate	6	30	0.91
Miyagi	9	52	0.70
Akita	3	13	0.72
Yamagata	0	13	0.43
Fukushima	5	9	0.28
Ibaraki	25	76	0.87
Tochigi	8	25	0.44
Gunma	6	21	0.38
Saitama	71	190	0.78
Chiba	29	115	0.50
Tokyo	100	314	0.56
Kanagawa	32	151	0.48
Niigata	18	33	0.56
Toyama	5	17	0.57
Ishikawa	5	23	0.62
Fukui	2	5	0.25
Yamanashi	1	7	0.47
Nagano	9	44	0.90
Gifu	7	28	0.33
Shizuoka	5	25	0.23
Aichi	35	139	0.51
Mie	13	29	0.62
Shiga	2	23	0.59
Kyoto	10	53	0.60
Osaka	48	221	0.40
Hyogo	30	106	0.42
Nara	8	22	0.34
Wakayama	1	7	0.22
Tottori	0	2	0.20
Shimane	0	2	0.25
Okayama	10	47	0.66
Hiroshima	8	45	0.66
Yamaguchi	10	23	0.50
Tokushima	6	13	0.43
Kagawa	8	15	0.56
Ehime	2	9	0.32
Kochi	2	9	0.35
Fukuoka	37	128	0.62
Saga	3	10	0.32
Nagasaki	8	18	0.34
Kumamoto	3	13	0.25
Oita	4	28	0.55
Miyazaki	2	18	0.75
Kagoshima	8	28	0.60
Okinawa	7	37	0.55

LTBI: Latent TB Infection

Number of LTBI is not included in the newly notified TB patients.

Table 7. LTBI cases and rates by major city, Japan, 2019

	Apr.	Summation (Jan.-Apr.)	
	LTBI	LTBI	(Ratio) LTBI / new TB
Total	203	798	0.49
Sapporo City	0	23	0.59
Sendai City	5	27	0.84
Saitama City	8	25	0.53
Chiba City	5	11	0.24
Yokohama City	6	33	0.27
Kawasaki City	11	50	0.94
Sagamihara City	0	9	0.69
Niigata City	5	11	0.38
Shizuoka City	3	7	0.29
Hamamatsu City	0	2	0.07
Nagoya City	11	57	0.45
Kyoto City	8	36	0.55
Osaka City	27	110	0.46
Sakai City	6	17	0.30
Kobe City	9	32	0.37
Okayama City	4	24	1.09
Hiroshima City	5	19	0.61
Kitakyushu City	10	22	0.48
Fukuoka City	13	49	0.72
Kumamoto City	2	7	0.35
23-ku area of Tokyo	65	227	0.53

LTBI: Latent TB Infection

Number of LTBI is not included in the newly notified TB patients,

Major city: city with a population of one million or more

Table 7 is a re-count of Table 6