



## Monthly Report of Tuberculosis Surveillance, Japan - November, 2019

The reporting and recording of tuberculosis (TB) and Latent TB Infection (LTBI) are managed at public health centers (PHCs) by the nationwide computerized TB surveillance system in Japan. A monthly report is compiled from the database automatically and regularly on 4<sup>th</sup> Friday of the next month, and an annual report is also produced much like the monthly report, but with sufficient time for data correction.

Tables and figures shown in the monthly reports are as follows.

### Figures

Figure 1. Number of newly notified TB cases by month, Japan, 2016-2019

Figure 2. Newly notified TB cases by sex and age, Japan, summation (Jan. - Nov.) 2019

Figure 3. Notification rate of TB cases by sex and age, Japan, summation (Jan. - Nov.) 2019

Figure 4. Notification rate of TB by prefecture, Japan, summation (Jan. - Nov.) 2019

Figure 5. Notification rate of TB by major city, Japan, summation (Jan. - Nov.) 2019

Figure 6. Number of LTBI, Japan, 2019

Figure 7. Number of LTBI by sex and age group, Japan, summation (Jan. - Nov.) 2016-2019

### Tables

Table 1. Newly notified TB cases and rates by sex and age, Japan, 2019

Table 2. Newly notified sputum smear positive pulmonary TB cases and rates by sex and age, Japan, 2019

Table 3. Newly notified TB cases and rates by prefecture, Japan, 2019

Table 4. Newly notified TB cases and rates by major city, Japan, 2019

Table 5. LTBI cases and rates by sex and age, Japan, 2019

Table 6. LTBI cases and rates by prefecture, Japan, 2019

Table 7. LTBI cases and rates by major city, Japan, 2019

Figure 1. Number of newly notified TB cases by month, Japan, 2016-2019

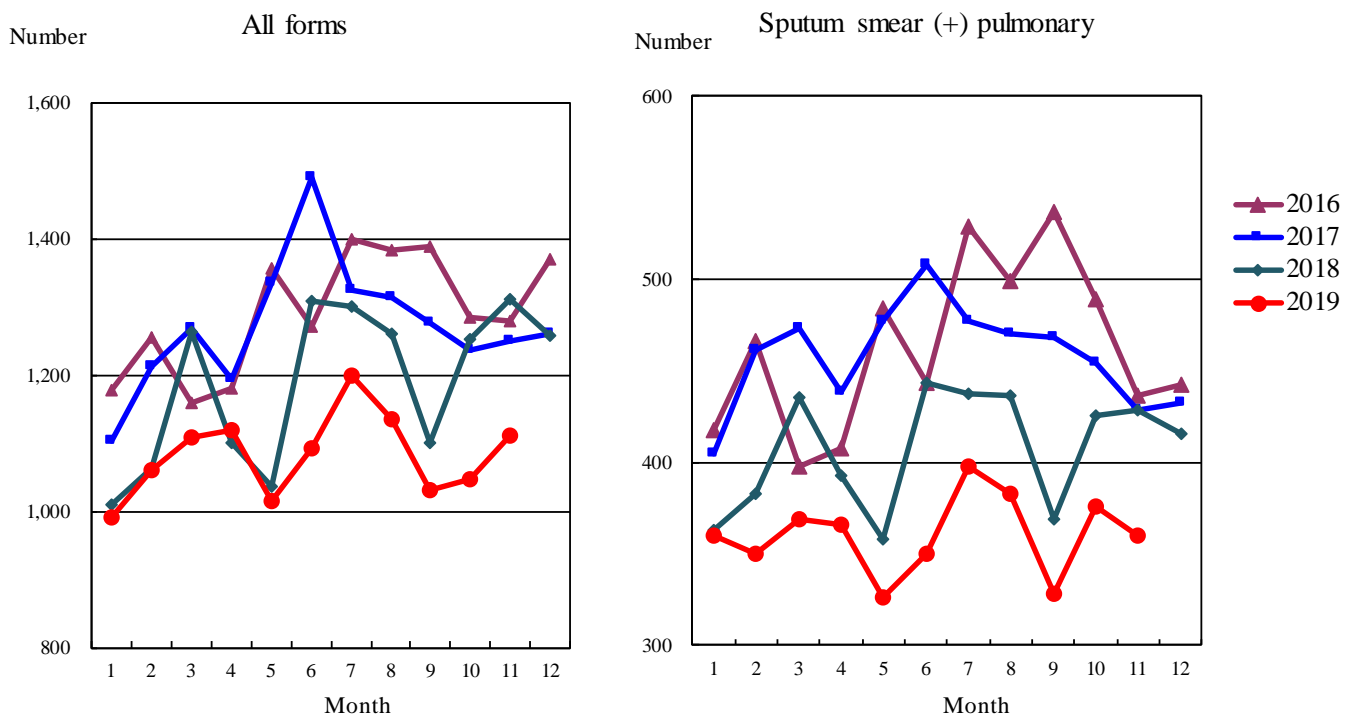


Figure 2. Newly notified TB patients by sex and age, Japan, summation (Jan.-Nov.) 2019

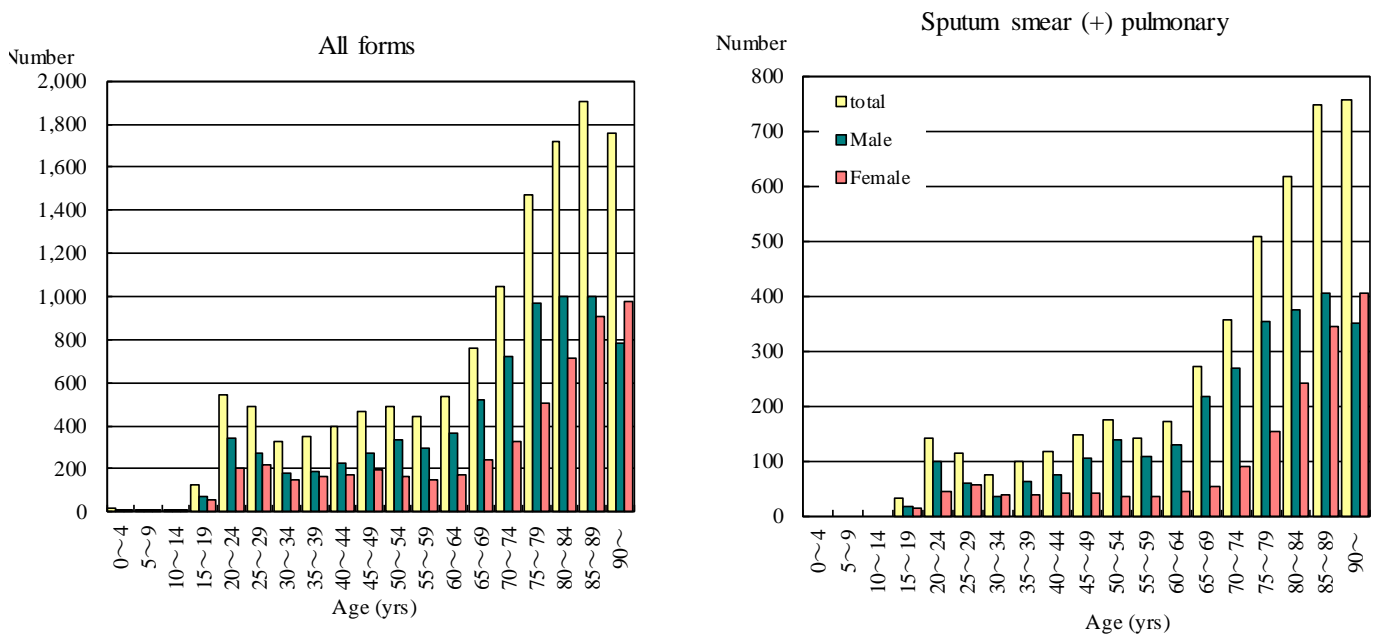


Figure 3. Notification rate of TB cases by sex and age, Japan, summation (Jan.-Nov.) 2019

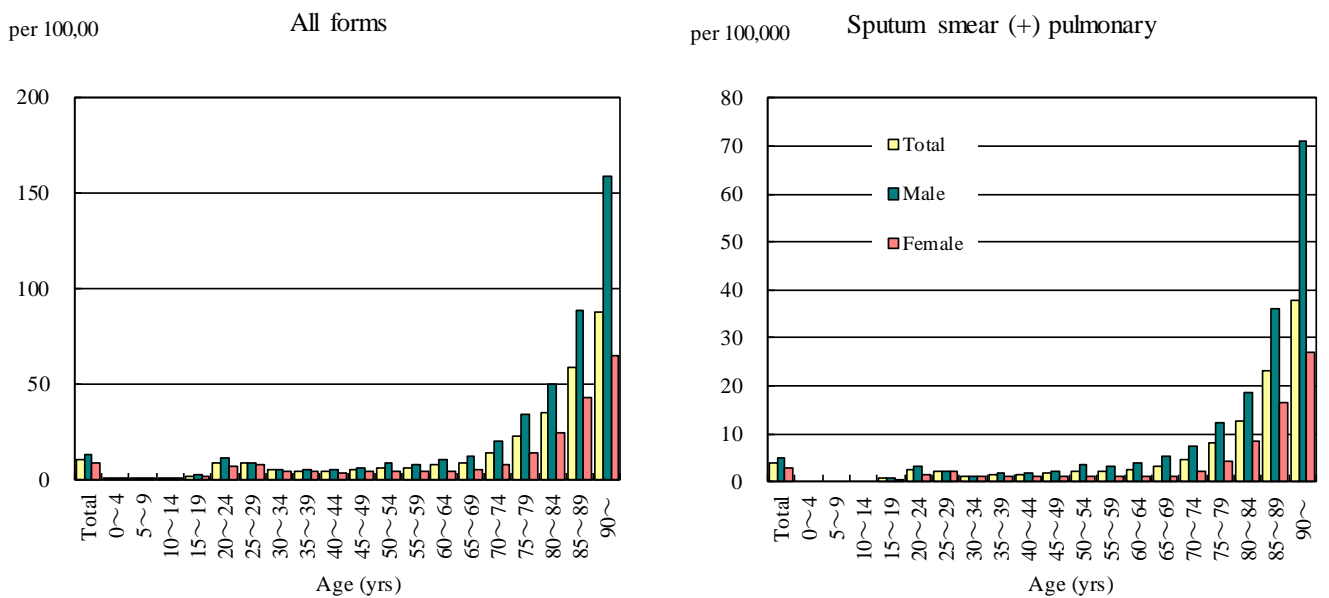


Figure 4. Notification rates of TB by prefecture, Japan, summation (Jan.-Nov.) 2019

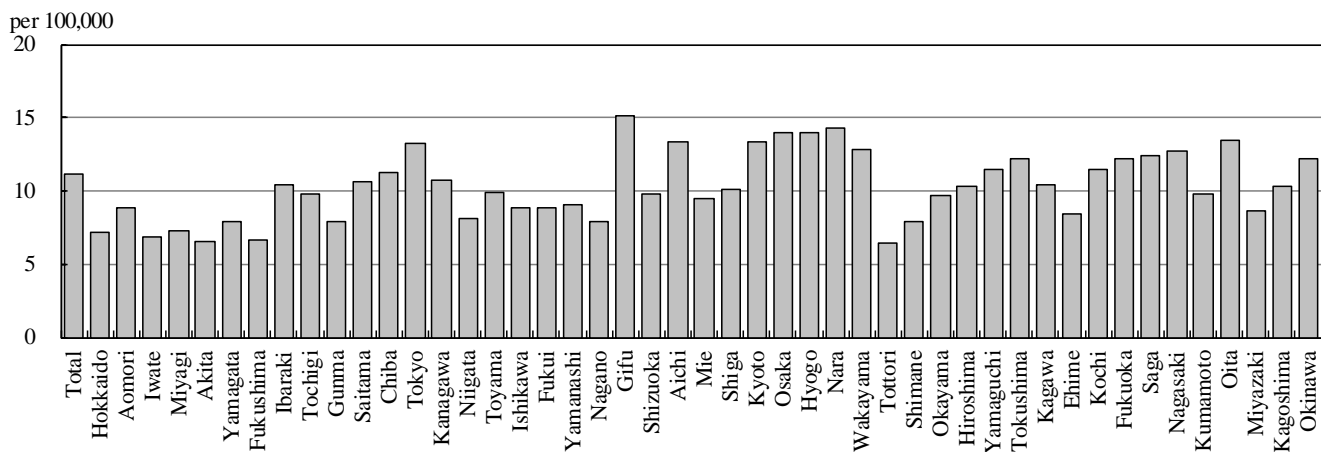


Figure 5. Notification rates of TB major city, Japan, summation (Jan.-Nov.) 2019

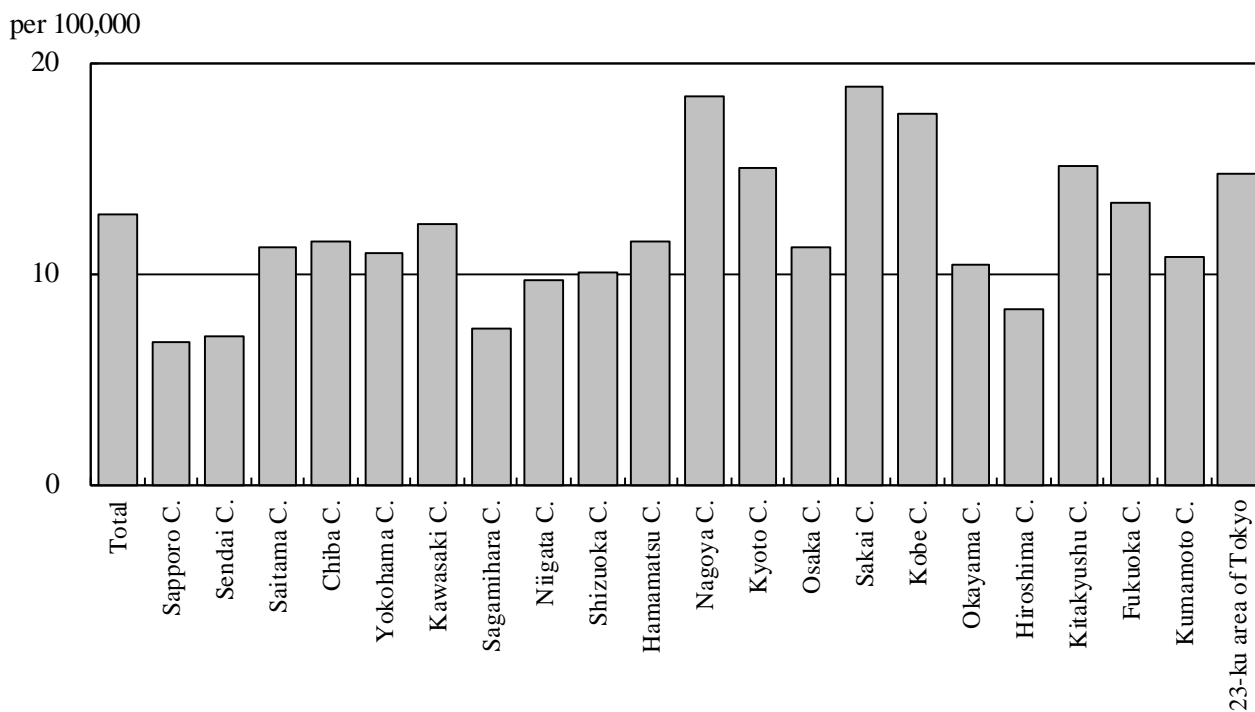


Figure 6. Number of LTBI, Japan, 2016-2019

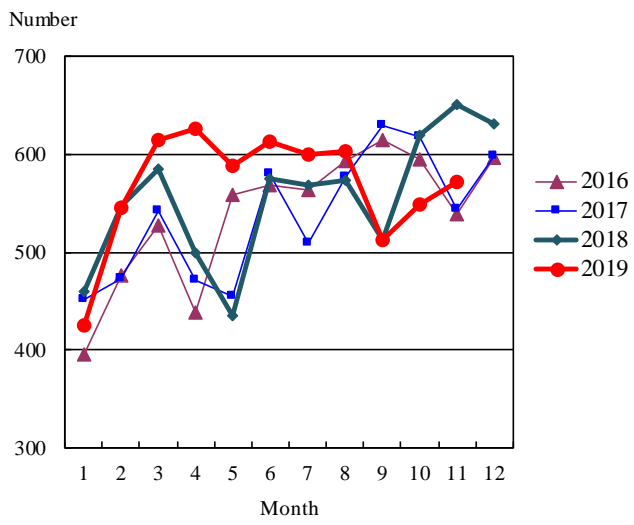


Figure 7. Number of LTBI by sex and age group, Japan, summation (Jan.-Nov.) 2019

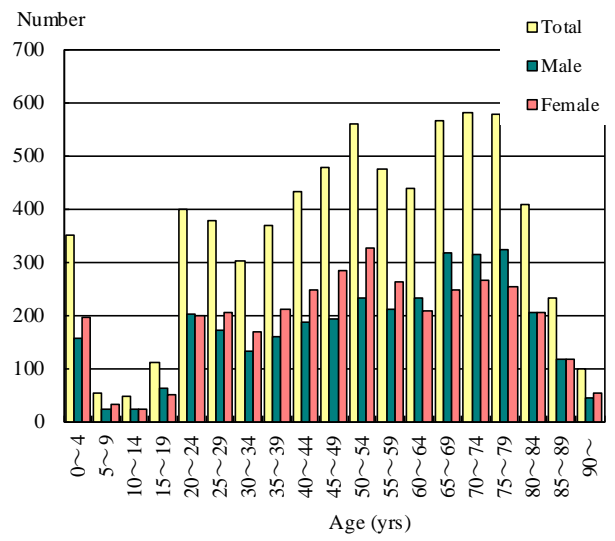


Table 1. Newly notified TB cases and rates by sex and age, Japan, 2019

	Nov.			Summation (Jan.-Nov.)			Notification rate (per 100,000)		
	Total	Male	Female	Total	Male	Female	Total	Male	Female
Total	1,111	643	468	12,878	7,558	5,320	11.1	13.4	8.9
0~4	1	0	1	18	6	12	0.4	0.3	0.6
5~9	0	0	0	9	7	2	0.2	0.3	0.1
10~14	0	0	0	9	7	2	0.2	0.3	0.1
15~19	12	5	7	128	70	58	2.4	2.5	2.2
20~24	42	26	16	547	343	204	9.4	11.5	7.3
25~29	39	26	13	493	276	217	8.6	9.4	7.8
30~34	23	13	10	324	177	147	5.1	5.5	4.7
35~39	31	19	12	348	187	161	4.9	5.2	4.6
40~44	31	15	16	399	228	171	4.8	5.4	4.2
45~49	31	18	13	470	276	194	5.3	6.2	4.4
50~54	49	31	18	492	331	161	6.4	8.6	4.2
55~59	25	16	9	445	293	152	6.3	8.4	4.3
60~64	57	35	22	538	365	173	7.7	10.6	4.9
65~69	62	36	26	762	523	239	8.9	12.6	5.4
70~74	108	68	40	1,046	722	324	13.9	20.4	8.1
75~79	123	79	44	1,473	965	508	23.2	33.9	14.5
80~84	146	96	50	1,718	1,002	716	35.0	49.8	24.8
85~89	184	99	85	1,902	998	904	59.1	88.9	43.1
90~	147	61	86	1,757	782	975	87.8	158.8	64.6

Temporary registrants = 22, Total of registrants and temporary registrants = 1,133

Rate: summation / (population\*11/12)\*100,000

Population: as of 1st Oct. 2018

Table 2. Newly notified sputum smear positive pulmonary TB cases and rates by sex and age, Japan, 2019

	Nov.			Summation (Jan.-Nov.)			Notification rate (per 100,000)		
	Total	Male	Female	Total	Male	Female	Total	Male	Female
Total	360	210	150	4,469	2,796	1,673	3.9	5.0	2.8
0~4	0	0	0	0	0	0	0.0	0.0	0.0
5~9	0	0	0	0	0	0	0.0	0.0	0.0
10~14	0	0	0	0	0	0	0.0	0.0	0.0
15~19	1	1	0	33	18	15	0.6	0.6	0.6
20~24	9	5	4	141	98	43	2.4	3.3	1.5
25~29	10	5	5	115	60	55	2.0	2.0	2.0
30~34	11	5	6	73	35	38	1.1	1.1	1.2
35~39	8	5	3	100	63	37	1.4	1.8	1.1
40~44	9	4	5	117	75	42	1.4	1.8	1.0
45~49	11	7	4	146	104	42	1.6	2.3	1.0
50~54	15	10	5	175	139	36	2.3	3.6	0.9
55~59	5	3	2	142	108	34	2.0	3.1	1.0
60~64	20	13	7	172	128	44	2.5	3.7	1.2
65~69	17	16	1	271	218	53	3.2	5.2	1.2
70~74	32	21	11	356	268	88	4.7	7.6	2.2
75~79	39	29	10	508	354	154	8.0	12.5	4.4
80~84	50	30	20	616	374	242	12.6	18.6	8.4
85~89	60	31	29	748	404	344	23.2	36.0	16.4
90~	63	25	38	756	350	406	37.8	71.1	26.9

Rate: summation / (population\*11/12)\*100,000

Population: as of 1st Oct. 2018

Table 3. Newly notified TB cases and rates by prefecture, Japan, 2019

	Nov.		Summation (Jan.-Nov.)		Notification rate (per 100,000)	
	Newly notified TB	Sputum smear (+)	Newly notified TB	Sputum smear (+)	Newly notified TB	Sputum smear (+)
Total	1,111	360	12,878	4,469	11.1	3.9
Hokkaido	20	5	347	116	7.2	2.4
Aomori	10	8	102	46	8.8	4.0
Iwate	10	1	78	28	6.9	2.5
Miyagi	8	2	155	53	7.3	2.5
Akita	6	1	59	19	6.6	2.1
Yamagata	8	2	79	32	7.9	3.2
Fukushima	11	4	113	45	6.6	2.6
Ibaraki	22	8	276	95	10.5	3.6
Tochigi	17	9	175	78	9.8	4.4
Gunma	13	6	141	43	7.9	2.4
Saitama	52	20	715	249	10.6	3.7
Chiba	51	16	644	226	11.2	3.9
Tokyo	151	40	1,676	563	13.2	4.4
Kanagawa	75	26	899	292	10.7	3.5
Niigata	22	5	168	44	8.2	2.1
Toyama	5	0	95	24	9.9	2.5
Ishikawa	4	1	93	31	8.9	3.0
Fukui	6	1	63	17	8.9	2.4
Yamanashi	6	3	68	33	9.1	4.4
Nagano	13	3	150	58	7.9	3.1
Gifu	21	7	276	90	15.1	4.9
Shizuoka	20	6	330	113	9.8	3.4
Aichi	90	25	922	299	13.3	4.3
Mie	20	10	155	60	9.4	3.7
Shiga	2	0	131	41	10.1	3.2
Kyoto	36	11	318	112	13.4	4.7
Osaka	102	31	1,130	434	14.0	5.4
Hyogo	76	34	702	257	14.0	5.1
Nara	23	7	176	72	14.3	5.9
Wakayama	9	2	110	46	12.8	5.4
Tottori	1	1	33	10	6.4	1.9
Shimane	5	4	49	22	7.9	3.5
Okayama	13	3	168	58	9.7	3.3
Hiroshima	28	9	266	93	10.3	3.6
Yamaguchi	9	1	144	39	11.5	3.1
Tokushima	7	3	82	37	12.2	5.5
Kagawa	4	0	92	26	10.4	2.9
Ehime	8	2	104	35	8.4	2.8
Kochi	1	1	74	23	11.4	3.6
Fukuoka	45	19	572	175	12.2	3.7
Saga	7	3	93	41	12.4	5.5
Nagasaki	14	3	156	47	12.7	3.8
Kumamoto	9	4	157	51	9.7	3.2
Oita	14	3	141	65	13.5	6.2
Miyazaki	7	3	86	37	8.7	3.7
Kagoshima	15	6	153	50	10.3	3.4
Okinawa	15	1	162	44	12.2	3.3

Rate: summation / (population\*11/12)\*100,000

Population: as of 1st Oct. 2018

Table 4. Newly notified TB cases and rates by major city, Japan, 2019

	Nov.		Summation (Jan.-Nov.)		Notification Rate (per 100,000)	
	Newly notified TB	Sputum Smear(+)	Newly notified TB	Sputum Smear(+)	Newly notified TB	Sputum Smear(+)
Total	399	126	4,352	1,483	12.8	4.3
Sapporo City	9	2	122	41	6.8	2.3
Sendai City	5	1	70	24	7.0	2.4
Saitama City	10	2	134	42	11.2	3.5
Chiba City	12	6	103	41	11.5	4.6
Yokohama City	33	9	376	120	11.0	3.5
Kawasaki City	19	10	171	48	12.3	3.5
Sagamihara City	4	2	49	20	7.4	3.0
Niigata City	8	2	71	17	9.7	2.3
Shizuoka City	5	0	65	23	10.1	3.6
Hamamatsu City	2	0	84	18	11.5	2.5
Nagoya City	31	11	391	151	18.4	7.1
Kyoto City	23	5	202	73	15.0	5.4
Osaka City	34	11	280	114	11.2	4.6
Sakai City	11	2	145	68	18.9	8.9
Kobe City	36	12	246	69	17.6	4.9
Okayama City	8	2	68	20	10.5	3.1
Hiroshima City	7	3	91	30	8.3	2.7
Kitakyushu City	9	4	131	30	15.1	3.5
Fukuoka City	20	10	193	63	13.3	4.4
Kumamoto City	3	1	73	30	10.8	4.4
23-ku area of Tokyo	110	31	1,287	441	14.7	5.0

Rate: summation / (population\*11/12)\*100,000

Population: as of 1st Oct. 2018

Major city: city with a population of one million or more.

Table 4 is a re-count of Table 3.

Table 5. LTBI cases and rates by sex and age, Japan, 2019

	Nov.			Summation (Jan.-Nov.)			(Ratio) LTBI/Newly notified cases		
	Total	Male	Female	Total	Male	Female	Total	Male	Female
Total	571	282	289	6,846	3,299	3,547	0.5	0.4	0.7
0~4	43	21	22	351	156	195	19.5	26.0	16.3
5~9	5	2	3	54	23	31	6.0	3.3	15.5
10~14	4	2	2	48	24	24	5.3	3.4	12.0
15~19	14	7	7	111	62	49	0.9	0.9	0.8
20~24	28	13	15	399	202	197	0.7	0.6	1.0
25~29	27	14	13	376	171	205	0.8	0.6	0.9
30~34	18	9	9	301	133	168	0.9	0.8	1.1
35~39	34	18	16	368	158	210	1.1	0.8	1.3
40~44	30	13	17	433	185	248	1.1	0.8	1.5
45~49	34	16	18	476	193	283	1.0	0.7	1.5
50~54	51	21	30	558	231	327	1.1	0.7	2.0
55~59	38	16	22	473	210	263	1.1	0.7	1.7
60~64	25	16	9	438	231	207	0.8	0.6	1.2
65~69	50	29	21	564	318	246	0.7	0.6	1.0
70~74	54	26	28	580	314	266	0.6	0.4	0.8
75~79	49	27	22	577	323	254	0.4	0.3	0.5
80~84	43	21	22	409	204	205	0.2	0.2	0.3
85~89	18	9	9	233	116	117	0.1	0.1	0.1
90~	6	2	4	97	45	52	0.1	0.1	0.1

LTBI: latent TB Infection

Number of LTBI is not included in the newly notified TB patients



Table 6. LTBI cases and rates by prefecture, Japan, 2019

	Nov.	Summation (Jan.-Nov.)	
	LTBI	LTBI	(Ratio) LTBI /new TB
Total	571	6,846	0.53
Hokkaido	14	225	0.65
Aomori	4	96	0.94
Iwate	9	72	0.92
Miyagi	17	158	1.02
Akita	3	45	0.76
Yamagata	2	39	0.49
Fukushima	13	73	0.65
Ibaraki	11	183	0.66
Tochigi	5	59	0.34
Gunma	2	61	0.43
Saitama	32	465	0.65
Chiba	19	306	0.48
Tokyo	82	938	0.56
Kanagawa	39	455	0.51
Niigata	16	118	0.70
Toyama	4	70	0.74
Ishikawa	2	44	0.47
Fukui	0	21	0.33
Yamanashi	11	54	0.79
Nagano	4	119	0.79
Gifu	7	95	0.34
Shizuoka	8	117	0.35
Aichi	36	444	0.48
Mie	4	76	0.49
Shiga	2	74	0.56
Kyoto	13	166	0.52
Osaka	61	494	0.44
Hyogo	30	304	0.43
Nara	8	81	0.46
Wakayama	7	45	0.41
Tottori	0	9	0.27
Shimane	7	19	0.39
Okayama	10	108	0.64
Hiroshima	6	140	0.53
Yamaguchi	8	67	0.47
Tokushima	4	30	0.37
Kagawa	7	37	0.40
Ehime	2	33	0.32
Kochi	0	24	0.32
Fukuoka	26	313	0.55
Saga	1	30	0.32
Nagasaki	3	61	0.39
Kumamoto	3	40	0.25
Oita	15	80	0.57
Miyazaki	1	82	0.95
Kagoshima	5	154	1.01
Okinawa	8	122	0.75

LTBI: Latent TB Infection

Number of LTBI is not included in the newly notified TB patients.

Table 7. LTBI cases and rates by major city, Japan, 2019

	Nov.	Summation (Jan.-Nov.)	
	LTBI	LTBI	(Ratio) LTBI / new TB
Total	199	2,217	0.51
Sapporo City	5	110	0.90
Sendai City	9	73	1.04
Saitama City	4	61	0.46
Chiba City	1	42	0.41
Yokohama City	17	155	0.41
Kawasaki City	9	111	0.65
Sagamihara City	1	23	0.47
Niigata City	5	52	0.73
Shizuoka City	4	28	0.43
Hamamatsu City	0	21	0.25
Nagoya City	10	163	0.42
Kyoto City	9	97	0.48
Osaka City	30	141	0.50
Sakai City	11	85	0.59
Kobe City	5	78	0.32
Okayama City	7	60	0.88
Hiroshima City	0	48	0.53
Kitakyushu City	5	50	0.38
Fukuoka City	5	130	0.67
Kumamoto City	1	18	0.25
23-ku area of Tokyo	61	671	0.52

LTBI: Latent TB Infection

Number of LTBI is not included in the newly notified TB patients,

Major city: city with a population of one million or more

Table 7 is a re-count of Table 6