

【Childhood】

Table 1 Number and rates of childhood tuberculosis patients and specific extra-pulmonary tuberculosis, 1965-2019

| Year | Newly notified tuberculosis aged 0-14 yrs |       | No. of meningeal tuberculosis |                | No. of miliary tuberculosis |                |
|------|-------------------------------------------|-------|-------------------------------|----------------|-----------------------------|----------------|
|      | Number                                    | Rate  | 0-14 yrs                      | 0-4 yrs (Rate) | 0-14 yrs                    | 0-4 yrs (Rate) |
| 1965 | 44,180                                    | 175.6 | –                             | –              | –                           | –              |
| 1970 | 18,197                                    | 73.4  | –                             | –              | –                           | –              |
| 1975 | 4,905                                     | 18.0  | 28                            | 22 (0.221)     | –                           | –              |
| 1980 | 1,893                                     | 6.9   | 22                            | 14 (0.164)     | –                           | –              |
| 1985 | 1,088                                     | 4.2   | –                             | –              | –                           | –              |
| 1990 | 518                                       | 2.3   | 9                             | 4 (0.061)      | 10                          | 8 (0.122)      |
| 1995 | 340                                       | 1.7   | 8                             | 8 (0.136)      | 8                           | 8 (0.136)      |
| 2000 | 220                                       | 1.2   | 7                             | 4 (0.069)      | 3                           | 3 (0.052)      |
| 2005 | 117                                       | 0.7   | 3                             | 1 (0.018)      | 3                           | 1(0.018)       |
| 2010 | 89                                        | 0.5   | 0                             | 0              | 0                           | 0              |
| 2011 | 84                                        | 0.5   | 1                             | 0              | 2                           | 1(0.019)       |
| 2012 | 63                                        | 0.4   | 1                             | 1(0.019)       | 0                           | 0              |
| 2013 | 66                                        | 0.4   | 2                             | 2(0.038)       | 0                           | 0              |
| 2014 | 49                                        | 0.3   | 5                             | 2(0.038)       | 2                           | 1(0.019)       |
| 2015 | 51                                        | 0.3   | 1                             | 1(0.020)       | 1                           | 0              |
| 2016 | 59                                        | 0.4   | 2                             | 2(0.040)       | 1                           | 1(0.020)       |
| 2017 | 59                                        | 0.4   | 2                             | 1(0.020)       | 3                           | 3(0.061)       |
| 2018 | 51                                        | 0.3   | 1                             | 1(0.021)       | 1                           | 1(0.021)       |
| 2019 | 38                                        | 0.2   | 0                             | 0              | 3                           | 2(0.042)       |

Extra-pulmonary tuberculosis: Cases are counted independently.

Rate: per 100,000

–: Not available

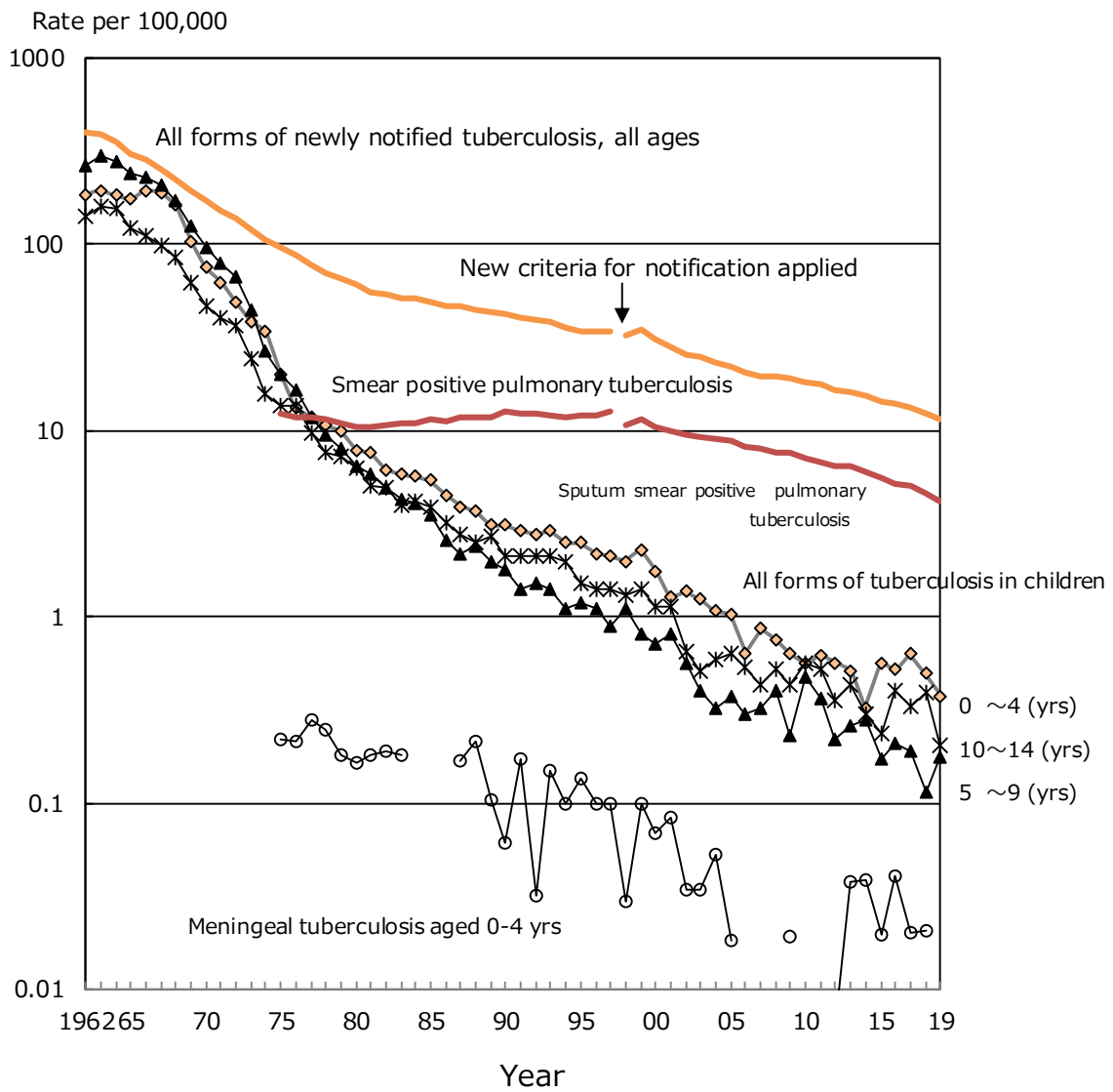


Fig. 1 Trend of childhood tuberculosis notification rates, per 100,000 population, 1962-2019

Table 2 Number of newly notified childhood tuberculosis patients by age and mode of detection, 2019

|                                      | Age (yrs) |          |          |          |          |          |          |          |          |          |          |          |          |          |          | Total     |
|--------------------------------------|-----------|----------|----------|----------|----------|----------|----------|----------|----------|----------|----------|----------|----------|----------|----------|-----------|
|                                      | 0         | 1        | 2        | 3        | 4        | 5        | 6        | 7        | 8        | 9        | 10       | 11       | 12       | 13       | 14       |           |
| School mass-investigation            | 0         | 0        | 0        | 0        | 0        | 0        | 1        | 0        | 0        | 0        | 0        | 0        | 0        | 0        | 0        | 1         |
| Family contact investigation         | 2         | 0        | 0        | 0        | 1        | 1        | 2        | 0        | 1        | 1        | 0        | 0        | 1        | 1        | 1        | 11        |
| Other contact investigation          | 1         | 0        | 0        | 0        | 0        | 0        | 0        | 0        | 1        | 0        | 0        | 0        | 0        | 0        | 0        | 2         |
| At clinics/hospitals (with symptoms) | 9         | 1        | 1        | 0        | 1        | 0        | 0        | 0        | 1        | 0        | 1        | 1        | 2        | 1        | 2        | 20        |
| Others                               | 2         | 0        | 0        | 0        | 0        | 1        | 0        | 0        | 0        | 0        | 0        | 0        | 0        | 0        | 1        | 4         |
| <b>Total</b>                         | <b>14</b> | <b>1</b> | <b>1</b> | <b>0</b> | <b>2</b> | <b>2</b> | <b>3</b> | <b>0</b> | <b>3</b> | <b>1</b> | <b>1</b> | <b>1</b> | <b>3</b> | <b>2</b> | <b>4</b> | <b>38</b> |

Table 3 Proportion of BCG vaccinated cases among newly notified childhood tuberculosis patients and LTBI cases, 2019

|                     | Age in years  |      |      |      |       |       |      |      |      |      | 5-9   | 10-14 | Total |
|---------------------|---------------|------|------|------|-------|-------|------|------|------|------|-------|-------|-------|
|                     | Age in months |      |      |      |       | 0     | 1    | 2    | 3    | 4    |       |       |       |
|                     | 0-2           | 3-5  | 6-8  | 9-11 | Total |       |      |      |      |      |       |       |       |
| Tuberculosis cases  | 1             | 7    | 6    | 0    | 14    | 1     | 1    | 0    | 2    | 18   | 9     | 11    | 38    |
| BCG vaccinated      | 0             | 0    | 3    | 0    | 3     | 0     | 0    | 0    | 0    | 3    | 2     | 5     | 10    |
| BCG not vaccinated  | 1             | 2    | 1    | 0    | 4     | 0     | 0    | 0    | 0    | 4    | 0     | 0     | 4     |
| BCG unknown         | 0             | 5    | 2    | 0    | 7     | 1     | 1    | 0    | 2    | 11   | 7     | 6     | 24    |
| BCG vaccinated (%)* | 0.0           | 0.0  | 75.0 |      | 42.9  |       |      |      |      | 42.9 | 100.0 | 100.0 | 71.4  |
| LTBI                | 23            | 73   | 165  | 42   | 303   | 30    | 31   | 24   | 23   | 411  | 62    | 53    | 526   |
| BCG vaccinated      | 0             | 24   | 110  | 31   | 165   | 21    | 19   | 16   | 17   | 238  | 39    | 17    | 294   |
| BCG not vaccinated  | 18            | 23   | 8    | 1    | 50    | 0     | 3    | 2    | 1    | 56   | 0     | 0     | 56    |
| BCG unknown         | 5             | 26   | 47   | 10   | 88    | 9     | 9    | 6    | 5    | 117  | 23    | 36    | 176   |
| BCG vaccinated (%)* | 0.0           | 51.1 | 93.2 | 96.9 | 76.7  | 100.0 | 86.4 | 88.9 | 94.4 | 81.0 | 100.0 | 100.0 | 84.0  |

LTBI : Latent Tuberculosis Infection

\*% : Proportion of BCG vaccinated cases among all TB/LTBI cases excluding BCG unknown

Previous table Trend of newly notified childhood TB patients by age and calendar year, 1998-2019

| Year | Age (yrs) |    |    |    |    |    |    |    |    |    |    |    |    |    |    | Total |
|------|-----------|----|----|----|----|----|----|----|----|----|----|----|----|----|----|-------|
|      | 0         | 1  | 2  | 3  | 4  | 5  | 6  | 7  | 8  | 9  | 10 | 11 | 12 | 13 | 14 |       |
| 1998 | 31        | 39 | 15 | 18 | 16 | 12 | 18 | 14 | 13 | 10 | 7  | 7  | 29 | 18 | 27 | 274   |
| 1999 | 43        | 35 | 24 | 23 | 9  | 10 | 15 | 8  | 7  | 10 | 8  | 9  | 27 | 27 | 25 | 280   |
| 2000 | 29        | 27 | 19 | 14 | 14 | 8  | 10 | 13 | 5  | 7  | 14 | 11 | 21 | 12 | 16 | 220   |
| 2001 | 27        | 18 | 14 | 9  | 7  | 4  | 14 | 11 | 11 | 8  | 8  | 4  | 23 | 18 | 19 | 195   |
| 2002 | 30        | 21 | 14 | 12 | 3  | 9  | 8  | 5  | 6  | 6  | 2  | 3  | 14 | 15 | 7  | 155   |
| 2003 | 23        | 15 | 17 | 5  | 12 | 9  | 5  | 4  | 1  | 5  | 4  | 3  | 4  | 10 | 10 | 127   |
| 2004 | 20        | 18 | 9  | 5  | 10 | 5  | 2  | 3  | 5  | 4  | 3  | 4  | 12 | 6  | 11 | 117   |
| 2005 | 23        | 11 | 5  | 13 | 4  | 4  | 3  | 7  | 5  | 3  | 6  | 5  | 7  | 13 | 8  | 117   |
| 2006 | 9         | 6  | 8  | 6  | 6  | 6  | 3  | 3  | 2  | 4  | 3  | 4  | 3  | 13 | 9  | 85    |
| 2007 | 21        | 5  | 7  | 12 | 2  | 6  | 5  | 2  | 4  | 2  | 2  | 4  | 4  | 7  | 9  | 92    |
| 2008 | 11        | 14 | 11 | 4  | 1  | 2  | 6  | 2  | 5  | 8  | 2  | 5  | 7  | 8  | 9  | 95    |
| 2009 | 15        | 8  | 6  | 3  | 2  | 4  | 4  | 1  | 3  | 1  | 6  | 1  | 5  | 8  | 6  | 73    |
| 2010 | 10        | 6  | 5  | 5  | 4  | 6  | 6  | 8  | 3  | 3  | 5  | 4  | 4  | 7  | 13 | 89    |
| 2011 | 5         | 7  | 6  | 7  | 8  | 3  | 7  | 3  | 3  | 4  | 6  | 4  | 5  | 5  | 11 | 84    |
| 2012 | 8         | 6  | 6  | 7  | 3  | 2  | 2  | 3  | 1  | 4  | 3  | 2  | 3  | 7  | 6  | 63    |
| 2013 | 7         | 4  | 5  | 4  | 7  | 3  | 3  | 2  | 1  | 5  | 3  | 4  | 7  | 3  | 8  | 66    |
| 2014 | 5         | 8  | -  | 2  | 2  | 1  | 6  | 1  | 3  | 4  | -  | 3  | 3  | 7  | 4  | 49    |
| 2015 | 13        | 5  | 5  | 2  | 4  | 1  | -  | -  | 6  | 2  | -  | 4  | 4  | 3  | 2  | 51    |
| 2016 | 10        | 8  | 1  | 2  | 5  | 1  | 2  | -  | 4  | 4  | 3  | 3  | -  | 6  | 10 | 59    |
| 2017 | 12        | 6  | 6  | 2  | 5  | 3  | 2  | 2  | -  | 3  | 2  | 4  | 2  | 5  | 5  | 59    |
| 2018 | 14        | 2  | 2  | 5  | 1  | 1  | 1  | -  | 2  | 2  | 5  | 2  | 3  | 3  | 8  | 51    |
| 2019 | 14        | 1  | 1  | -  | 2  | 2  | 3  | -  | 3  | 1  | 1  | 1  | 3  | 2  | 4  | 38    |

School mass-examination was revised in 2003.

Upper-limitation age of BCG vaccination was changed from 4 years to 6 months, with introduction of direct vaccination policy in 2005.

Previous table Number of prefectures by number of childhood TB patients, 1980-2019

| Year | Number of childhood TB patients |    |     |     |       |       |            | Total |
|------|---------------------------------|----|-----|-----|-------|-------|------------|-------|
|      | 0                               | 1  | 2~4 | 5~9 | 10~14 | 15~19 | 20+(cases) |       |
| 1980 | 0                               | 0  | 1   | 6   | 7     | 4     | 29         | 47    |
| 1985 | 0                               | 0  | 5   | 11  | 10    | 2     | 19         | 47    |
| 1990 | 0                               | 3  | 13  | 11  | 8     | 2     | 10         | 47    |
| 1995 | 3                               | 6  | 14  | 13  | 4     | 2     | 5          | 47    |
| 2000 | 9                               | 8  | 13  | 10  | 3     | 1     | 3          | 47    |
| 2005 | 17                              | 8  | 13  | 7   | 2     | 0     | 0          | 47    |
| 2006 | 19                              | 13 | 8   | 6   | 1     | 0     | 0          | 47    |
| 2007 | 17                              | 12 | 11  | 5   | 2     | 0     | 0          | 47    |
| 2008 | 14                              | 12 | 16  | 4   | 1     | 0     | 0          | 47    |
| 2009 | 27                              | 6  | 8   | 4   | 2     | 0     | 0          | 47    |
| 2010 | 15                              | 14 | 14  | 3   | 0     | 0     | 1          | 47    |
| 2011 | 19                              | 11 | 12  | 4   | 0     | 0     | 1          | 47    |
| 2012 | 22                              | 11 | 11  | 3   | 0     | 0     | 0          | 47    |
| 2013 | 19                              | 14 | 9   | 5   | 0     | 0     | 0          | 47    |
| 2014 | 22                              | 14 | 9   | 2   | 0     | 0     | 0          | 47    |
| 2015 | 25                              | 10 | 9   | 3   | 0     | 0     | 0          | 47    |
| 2016 | 25                              | 10 | 7   | 5   | 0     | 0     | 0          | 47    |
| 2017 | 25                              | 8  | 11  | 2   | 1     | 0     | 0          | 47    |
| 2018 | 26                              | 12 | 6   | 2   | 1     | 0     | 0          | 47    |
| 2019 | 32                              | 5  | 8   | 2   | 0     | 0     | 0          | 47    |

**[Elderly]**

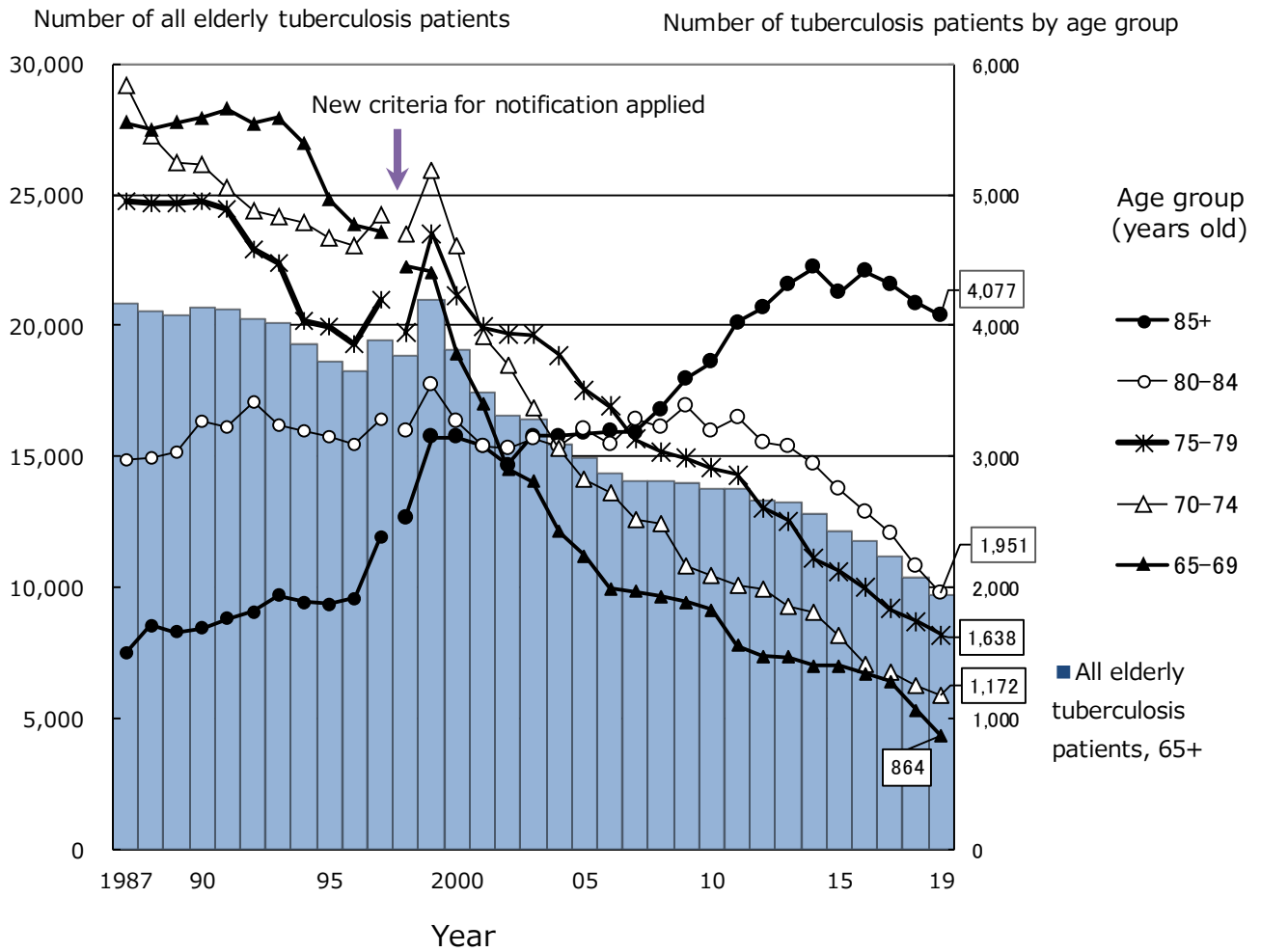


Fig.2 Annual trend of the number of newly notified elderly tuberculosis patients by age group, 1987-2019

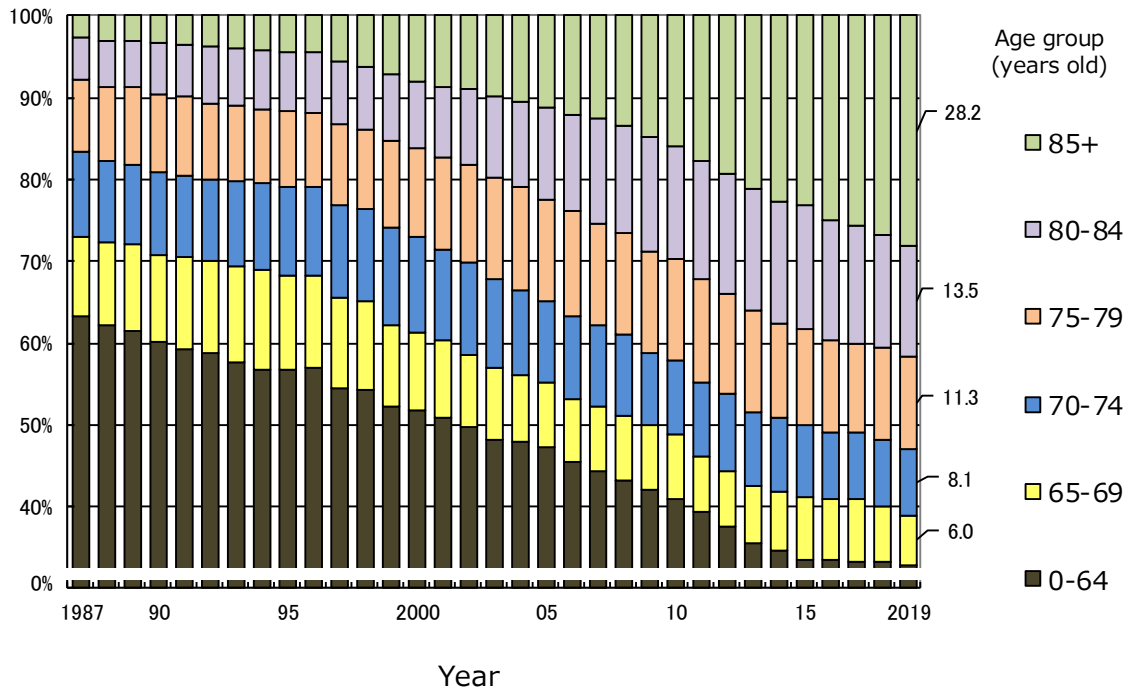


Fig.3 Annual trend of the proportion of elderly tuberculosis patients among all new tuberculosis patients, 1987-2019

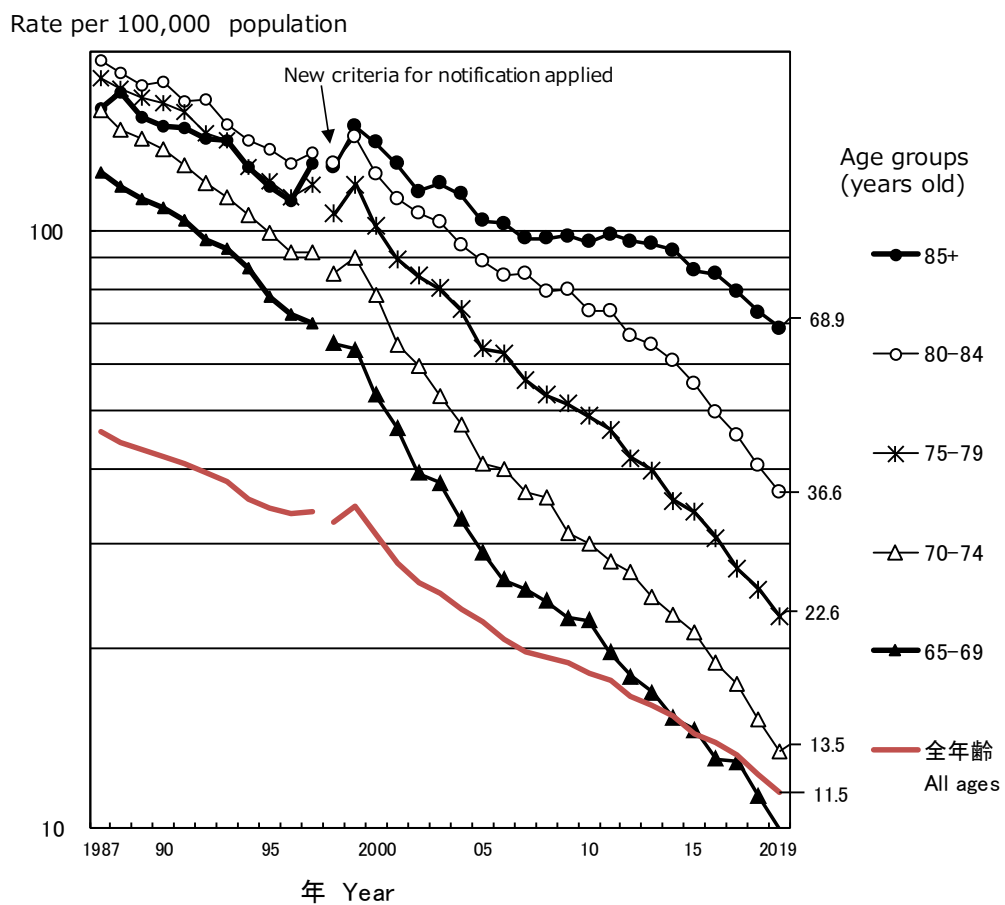


Fig.4 Annual trend of elderly tuberculosis notification rates (per 100,000 population) among the elderly population, by age group, all forms, 1987-2019

Table 4 Comparison of epidemiological indicators of newly notified tuberculosis patients by sex and age group, 2019

|                                                                                                                                                        |        | Age group (years old) |                       |         |             |       |       |
|--------------------------------------------------------------------------------------------------------------------------------------------------------|--------|-----------------------|-----------------------|---------|-------------|-------|-------|
|                                                                                                                                                        |        | All ages              | Youth and middle-aged |         | The elderly |       |       |
|                                                                                                                                                        |        |                       | 15-64                 | all 65+ | 65-74       | 75-84 | 85+   |
| Number of newly notified tuberculosis patients (all forms, n)                                                                                          | Total  | 14,460                | 4,720                 | 9,702   | 2,036       | 3,589 | 4,077 |
|                                                                                                                                                        | Male   | 8,521                 | 2,876                 | 5,625   | 1,413       | 2,215 | 1,997 |
|                                                                                                                                                        | Female | 5,939                 | 1,844                 | 4,077   | 623         | 1,374 | 2,080 |
| Tuberculosis notification rate (all forms, per 100,000 population)                                                                                     | Total  | 11.5                  | 6.3                   | 27.0    | 11.7        | 28.6  | 68.9  |
|                                                                                                                                                        | Male   | 13.9                  | 7.6                   | 36.1    | 17.0        | 40.7  | 107.9 |
|                                                                                                                                                        | Female | 9.2                   | 5.0                   | 20.1    | 6.9         | 19.3  | 51.1  |
| Number of newly notified extra-pulmonary tuberculosis patients (n)                                                                                     | Total  | 3,366                 | 903                   | 2,450   | 460         | 989   | 1,001 |
|                                                                                                                                                        | Male   | 1,721                 | 464                   | 1,250   | 264         | 551   | 435   |
|                                                                                                                                                        | Female | 1,645                 | 439                   | 1,200   | 196         | 438   | 566   |
| Proportion of extra-pulmonary tuberculosis patients among newly notified tuberculosis patients (%)                                                     | Total  | 23.3                  | 19.1                  | 25.3    | 22.6        | 27.6  | 24.6  |
|                                                                                                                                                        | Male   | 20.2                  | 16.1                  | 22.2    | 18.7        | 24.9  | 21.8  |
|                                                                                                                                                        | Female | 27.7                  | 23.8                  | 29.4    | 31.5        | 31.9  | 27.2  |
| Number of newly notified pulmonary tuberculosis patients (n)                                                                                           | Total  | 11,094                | 3,817                 | 7,252   | 1,576       | 2,600 | 3,076 |
|                                                                                                                                                        | Male   | 6,800                 | 2,412                 | 4,375   | 1,149       | 1,664 | 1,562 |
|                                                                                                                                                        | Female | 4,294                 | 1,405                 | 2,877   | 427         | 936   | 1,514 |
| Proportion of pulmonary tuberculosis patients among newly notified tuberculosis patients (%)                                                           | Total  | 76.7                  | 80.9                  | 74.7    | 77.4        | 72.4  | 75.4  |
|                                                                                                                                                        | Male   | 79.8                  | 83.9                  | 77.8    | 81.3        | 75.1  | 78.2  |
|                                                                                                                                                        | Female | 72.3                  | 76.2                  | 70.6    | 68.5        | 68.1  | 72.8  |
| Proportion of bacteriologically positive tuberculosis patients among all pulmonary tuberculosis patients (%)                                           | Total  | 86.7                  | 77.1                  | 91.9    | 88.1        | 91.1  | 94.5  |
|                                                                                                                                                        | Male   | 87.3                  | 78.5                  | 92.3    | 89.6        | 91.8  | 94.8  |
|                                                                                                                                                        | Female | 85.7                  | 74.7                  | 91.2    | 84.3        | 89.7  | 94.1  |
| Proportion of sputum-smear positive pulmonary tuberculosis patients among all pulmonary tuberculosis patients (%)                                      | Total  | 47.2                  | 36.9                  | 52.7    | 47.1        | 51.5  | 56.5  |
|                                                                                                                                                        | Male   | 48.1                  | 40.0                  | 52.8    | 50.0        | 51.8  | 55.8  |
|                                                                                                                                                        | Female | 45.6                  | 31.6                  | 52.6    | 39.6        | 51.1  | 57.3  |
| Proportion of cavitory pulmonary tuberculosis patients among all pulmonary tuberculosis patients (%)                                                   | Total  | 28.5                  | 30.6                  | 27.5    | 31.6        | 27.8  | 25.2  |
|                                                                                                                                                        | Male   | 31.5                  | 35.0                  | 29.6    | 34.6        | 29.3  | 26.4  |
|                                                                                                                                                        | Female | 23.8                  | 23.1                  | 24.3    | 23.7        | 25.0  | 24.0  |
| Proportion of far-advanced cavitory pulmonary tuberculosis patients among all pulmonary tuberculosis patients (%)                                      | Total  | 2.0                   | 2.6                   | 1.7     | 3.1         | 1.4   | 1.2   |
|                                                                                                                                                        | Male   | 2.4                   | 3.3                   | 1.9     | 3.0         | 1.4   | 1.7   |
|                                                                                                                                                        | Female | 1.4                   | 1.4                   | 1.4     | 3.5         | 1.4   | 0.8   |
| Proportion of symptomatic pulmonary tuberculosis patients upon diagnosis among all pulmonary tuberculosis (%)                                          | Total  | 71.2                  | 57.7                  | 78.5    | 68.0        | 77.0  | 85.2  |
|                                                                                                                                                        | Male   | 71.1                  | 58.2                  | 78.3    | 69.9        | 77.5  | 85.4  |
|                                                                                                                                                        | Female | 71.5                  | 57.0                  | 78.8    | 62.8        | 76.0  | 85.0  |
| Proportion of pulmonary tuberculosis patients with only symptoms other than respiratory symptoms among symptomatic pulmonary tuberculosis patients (%) | Total  | 24.8                  | 19.3                  | 26.9    | 24.6        | 24.4  | 29.8  |
|                                                                                                                                                        | Male   | 23.0                  | 18.8                  | 24.7    | 22.9        | 24.0  | 26.4  |
|                                                                                                                                                        | Female | 27.6                  | 20.1                  | 30.3    | 29.5        | 25.2  | 33.3  |
| Proportion of patient delay of two months or more among symptomatic pulmonary tuberculosis patients (%)*                                               | Total  | 20.4                  | 27.9                  | 17.3    | 25.0        | 18.2  | 13.3  |
|                                                                                                                                                        | Male   | 21.1                  | 29.9                  | 17.3    | 25.2        | 17.4  | 12.3  |
|                                                                                                                                                        | Female | 19.2                  | 24.4                  | 17.3    | 24.6        | 19.6  | 14.3  |
| Proportion of doctor delay of one month or more among symptomatic pulmonary tuberculosis patients (%)*                                                 | Total  | 21.9                  | 19.7                  | 22.8    | 24.3        | 24.4  | 20.9  |
|                                                                                                                                                        | Male   | 21.2                  | 17.5                  | 22.8    | 23.5        | 25.0  | 20.2  |
|                                                                                                                                                        | Female | 22.9                  | 23.4                  | 22.8    | 26.7        | 23.4  | 21.5  |
| Proportion of total delay of three months or more among symptomatic pulmonary tuberculosis patients (%)*                                               | Total  | 21.7                  | 29.1                  | 18.7    | 24.9        | 19.8  | 15.2  |
|                                                                                                                                                        | Male   | 22.0                  | 30.0                  | 18.6    | 24.1        | 19.5  | 14.3  |
|                                                                                                                                                        | Female | 21.2                  | 27.5                  | 18.9    | 27.2        | 20.3  | 16.2  |
| Proportion of tuberculosis patients detected as out-patient for other diseases among newly notified tuberculosis patients (%)                          | Total  | 11.7                  | 6.3                   | 14.4    | 17.7        | 17.2  | 10.2  |
|                                                                                                                                                        | Male   | 12.6                  | 5.9                   | 16.1    | 17.3        | 19.5  | 11.5  |
|                                                                                                                                                        | Female | 10.3                  | 6.8                   | 11.9    | 18.8        | 13.5  | 8.9   |
| Proportion of tuberculosis patients detected as in-patient for other diseases among newly notified tuberculosis patients (%)                           | Total  | 15.8                  | 4.5                   | 21.4    | 14.3        | 19.8  | 26.2  |
|                                                                                                                                                        | Male   | 15.2                  | 5.3                   | 20.2    | 14.7        | 19.6  | 24.9  |
|                                                                                                                                                        | Female | 16.8                  | 3.3                   | 22.9    | 13.5        | 20.2  | 27.5  |

Subjects: \* Excluding the patients of unknown delays

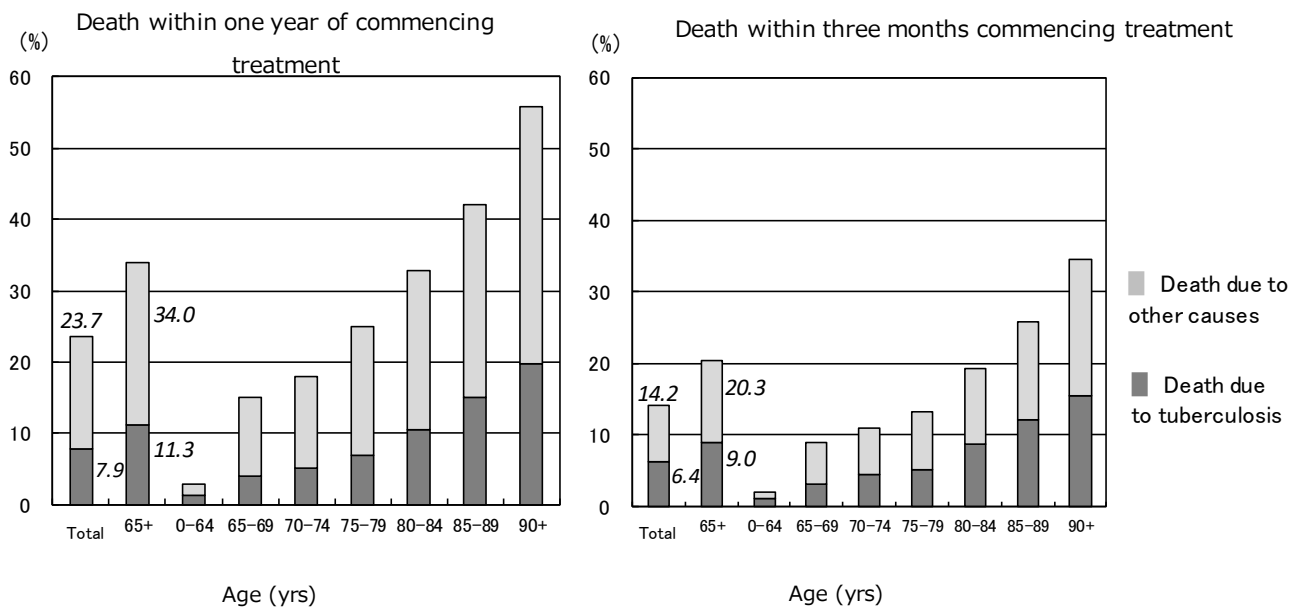


Fig.5 Proportion of death among newly notified tuberculosis patients in 2018 by age group, cause of death and duration till death

\* The date when tuberculosis diagnosis was made was used as the date it was commenced for those who died before the start of treatment.



Previous table Number and proportion of elderly TB by prefecture and city, 2019

| 65+ (yrs)     |          |      | 85+ (yrs)      |          |      |
|---------------|----------|------|----------------|----------|------|
| Area          | <i>n</i> | %    | Area           | <i>n</i> | %    |
| Japan         | 9,702    | 67.1 | Japan          | 4,077    | 28.2 |
| Fukui         | 60       | 87.0 | Shizuoka city  | 33       | 45.8 |
| Kyouto        | 113      | 85.0 | Ymaguchi       | 67       | 43.5 |
| Ymaguchi      | 127      | 82.5 | Fukui          | 30       | 43.5 |
| Tokusima      | 79       | 82.3 | Kumamoto city  | 30       | 41.1 |
| Miyazaki      | 82       | 81.2 | Sendai city    | 31       | 40.8 |
| Kumamoto city | 59       | 80.8 | Hamamatsu city | 35       | 40.7 |
| Ymagata       | 67       | 80.7 | Tokushima      | 39       | 40.6 |
| Nara          | 150      | 80.6 | Wakayama       | 47       | 40.2 |
| Ehime         | 90       | 80.4 | Miyazaki       | 40       | 39.6 |
| Wakayama      | 93       | 79.5 | Kagoshima      | 72       | 39.3 |
| Yamanashi     | 61       | 79.2 | Ehime          | 44       | 39.3 |
| Kagawa        | 78       | 78.8 | Okayama city   | 28       | 38.9 |
| Nagasaki      | 137      | 78.7 | Sapporo city   | 52       | 38.5 |
| Kagoshima     | 142      | 77.6 | Oita           | 58       | 38.4 |
| Hokkaido      | 197      | 77.6 | Kagawa         | 38       | 38.4 |
| .             | .        | .    | .              | .        | .    |
| Okayama city  | 45       | 62.5 | Fukuoka city   | 45       | 22.0 |
| Yokohama city | 252      | 61.2 | Ibaraki        | 65       | 21.7 |
| Saitama       | 388      | 60.3 | Chiba          | 126      | 21.4 |
| Chiba         | 342      | 58.2 | Tokyo          | 382      | 21.1 |
| Saitama city  | 82       | 57.3 | Chiba city     | 23       | 21.1 |
| Tokyo         | 1,018    | 56.2 | Saitama city   | 30       | 21.0 |
| Tokyo 23wards | 756      | 54.7 | Tokyo 23wards  | 269      | 19.5 |
| Chiba city    | 55       | 50.5 | Kawasaki city  | 35       | 19.0 |
| Fukuoka city  | 103      | 50.2 | Sakai city     | 28       | 18.2 |
| Kawasaki city | 92       | 50.0 | Osaka city     | 125      | 17.8 |

Descending order by proportion of elderly TB patients