

【Case finding】

Table1 Proportion of mode of detection among newly notified tuberculosis patients, 2007-2019

Year	Newly notified TB patients <i>n</i>	Individual medical checkup <i>n</i> %	Mass screening								Contact examination				Medical institutions						Others <i>n</i> %	Unknown	
			Schools		Residents		Employees		Facilities		Family		Others		Outpatients with TB symptoms(*1)		Inpatients with other diseases		Outpatients with other diseases			<i>n</i>	%
			<i>n</i>	%	<i>n</i>	%	<i>n</i>	%	<i>n</i>	%	<i>n</i>	%	<i>n</i>	%	<i>n</i>	%	<i>n</i>	%	<i>n</i>	%			
2007	25,311	537 2.1	217 0.9	636 2.5	1,931 7.6	145 0.6	355 1.4	370 1.5	16,997 67.2	2,031 8.0	1,611 6.4	340 1.3	141 0.6										
2008	24,760	639 2.6	195 0.8	486 2.0	1,877 7.6	144 0.6	325 1.3	410 1.7	15,347 62.0	2,681 10.8	2,100 8.5	316 1.3	240 1.0										
2009	24,170	611 2.5	197 0.8	550 2.3	1,749 7.2	136 0.6	324 1.3	311 1.3	14,864 61.5	2,752 11.4	2,220 9.2	301 1.2	155 0.6										
2010	23,261	507 2.2	244 1.0	544 2.3	1,618 7.0	128 0.6	313 1.3	350 1.5	13,901 59.8	2,792 12.0	2,305 9.9	333 1.4	226 1.0										
2011	22,681	470 2.1	188 0.8	497 2.2	1,531 6.8	126 0.6	354 1.6	482 2.1	13,177 58.1	2,916 12.9	2,515 11.1	330 1.5	95 0.4										
2012	21,283	409 1.9	163 0.8	498 2.3	1,424 6.7	121 0.6	315 1.5	374 1.8	12,284 57.7	2,941 13.8	2,312 10.9	357 1.7	85 0.4										
2013	20,495	413 2.0	172 0.8	455 2.2	1,246 6.1	89 0.4	314 1.5	333 1.6	11,978 58.4	2,745 13.4	2,306 11.3	336 1.6	108 0.5										
2014	19,615	344 1.8	201 1.0	404 2.1	1,221 6.2	92 0.5	303 1.5	333 1.7	11,441 58.3	2,591 13.2	2,210 11.3	328 1.7	147 0.7										
2015	18,280	319 1.7	192 1.1	359 2.0	1,147 6.3	78 0.4	248 1.4	263 1.4	10,556 57.7	2,630 14.4	2,043 11.2	144 0.8	127 0.7										
2016	17,625	319 1.8	250 1.4	355 2.0	1,056 6.0	98 0.6	211 1.2	409 2.3	10,073 57.2	2,471 14.0	1,971 11.2	146 0.8	98 0.6										
2017	16,789	331 2.0	259 1.5	336 2.0	1,088 6.5	70 0.4	256 1.5	323 1.9	9,338 55.6	2,528 15.1	1,900 11.3	150 0.9	73 0.4										
2018	15,590	290 1.9	226 1.4	288 1.8	1,077 6.9	74 0.5	239 1.5	314 2.0	8,617 55.3	2,317 14.9	1,798 11.5	139 0.9	56 0.4										
2019	14,460	278 1.9	226 1.6	314 2.2	983 6.8	76 0.5	210 1.5	358 2.5	7,746 53.6	2,288 15.8	1,690 11.7	104 0.7	62 0.4										
2019																							
Age group																							
0~9	27	0 0.0	1 3.7	0 0.0	0 0.0	0 0.0	8 29.6	2 7.4	10 37.0	2 7.4	1 3.7	3 11.1	0 0.0										
10~19	153	5 3.3	48 31.4	1 0.7	7 4.6	0 0.0	16 10.5	6 3.9	62 40.5	1 0.7	1 0.7	0 0.0	1 0.7										
20~29	1,164	31 2.7	166 14.3	5 0.4	244 21.0	5 0.4	14 1.2	86 7.4	537 46.1	19 1.6	20 1.7	6 0.5	6 0.5										
30~39	767	18 2.3	10 1.3	4 0.5	215 28.0	8 1.0	11 1.4	34 4.4	406 52.9	17 2.2	22 2.9	1 0.1	4 0.5										
40~49	985	33 3.4	1 0.1	17 1.7	208 21.1	7 0.7	28 2.8	58 5.9	505 51.3	42 4.3	62 6.3	12 1.2	5 0.5										
50~59	1,054	28 2.7	0 0.0	18 1.7	169 16.0	5 0.5	32 3.0	49 4.6	532 50.5	70 6.6	120 11.4	12 1.1	5 0.5										
60~69	1,472	49 3.3	0 0.0	44 3.0	105 7.1	8 0.5	35 2.4	42 2.9	754 51.2	175 11.9	217 14.7	22 1.5	6 0.4										
70~79	2,810	61 2.2	0 0.0	112 4.0	32 1.1	6 0.2	31 1.1	31 1.1	1,473 52.4	479 17.0	526 18.7	21 0.7	13 0.5										
80~89	4,061	41 1.0	0 0.0	93 2.3	3 0.1	17 0.4	32 0.8	36 0.9	2,297 56.6	924 22.8	569 14.0	19 0.5	15 0.4										
90~	1,967	12 0.6	0 0.0	20 1.0	0 0.0	20 1.0	3 0.2	14 0.7	1,170 59.5	559 28.4	152 7.7	8 0.4	7 0.4										

TB: tuberculosis

TB symptoms: Respiratory symptoms such as cough, sputum expectoration, bloody sputum, and hemoptysis; and other symptoms such as wheezing, chest pain, back pain, dyspnea, fever, night sweating, fatigue tendency, fatigue tendency, and weight loss.

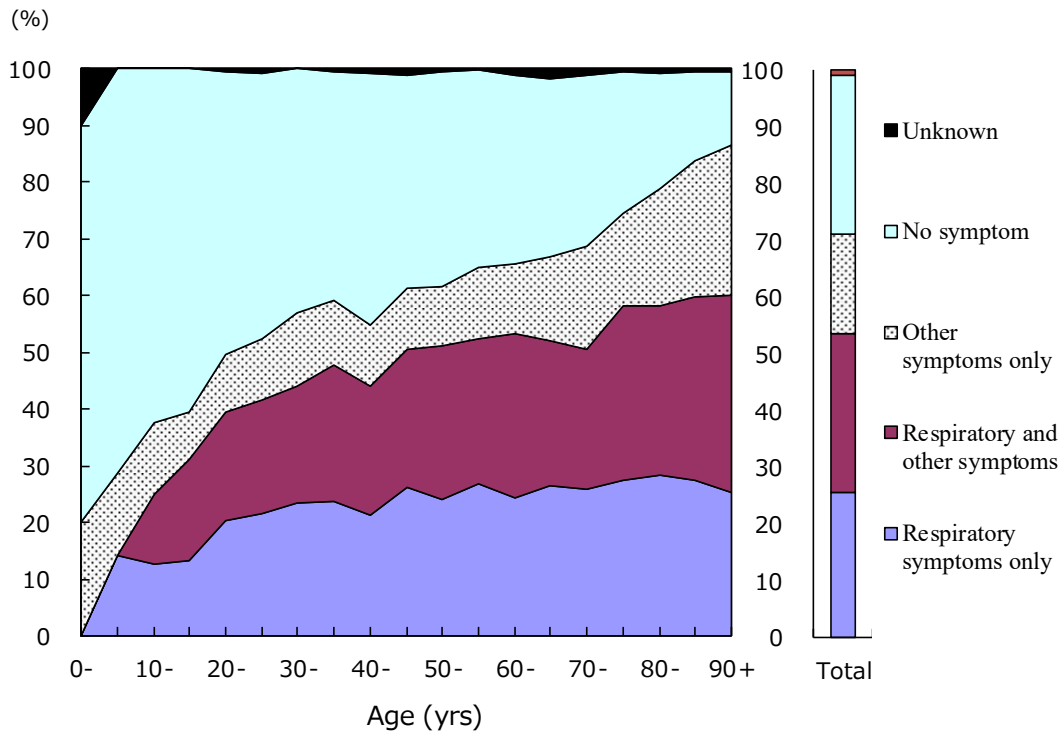


Fig.1 Proportion of symptoms among newly notified pulmonary tuberculosis patients by 5- years age group, in 2019
 Respiratory symptoms include cough, sputum expectoration, bloody sputum, and hemoptysis. Other symptoms include wheezing, chest pain, back pain, dyspnea, fever, night sweating, fatigue tendency, and weight loss.

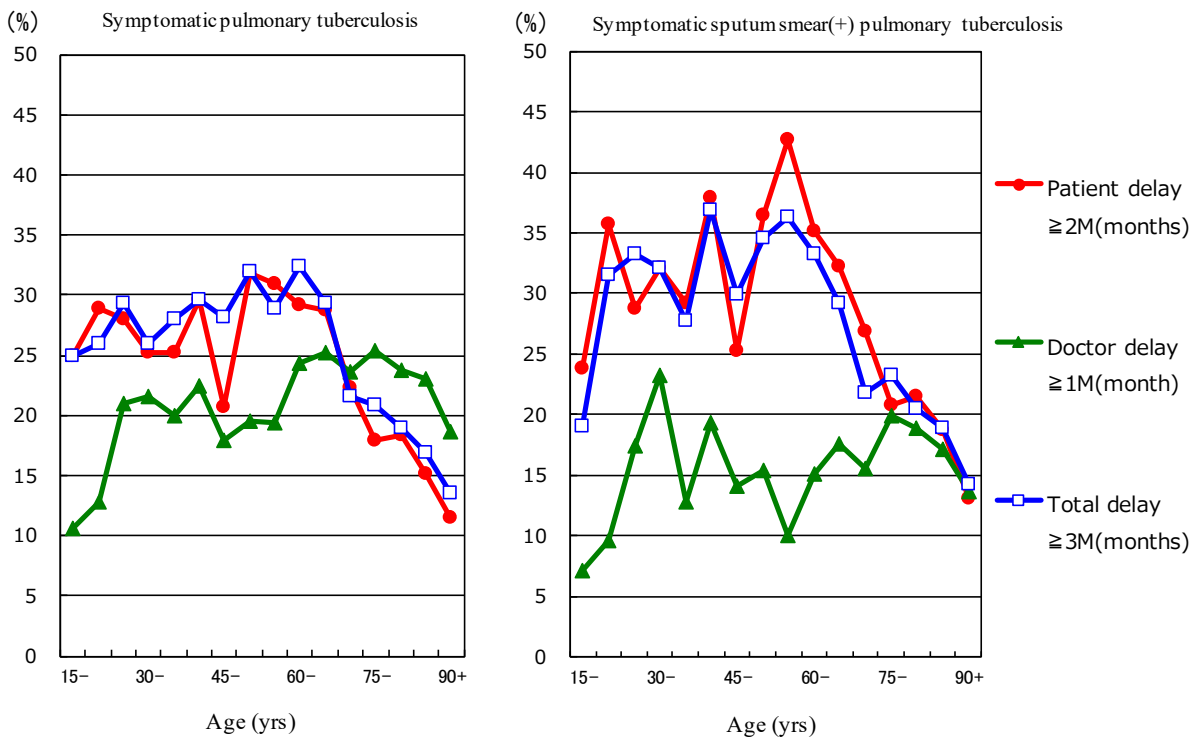


Fig.2 Proportion of patient delay, doctor delay and total delay among symptomatic pulmonary tuberculosis patients by 5-year age group, in 2019
 Patient delay: time interval from the onset of symptoms to the first visit to a medical institution of 2 months or longer
 Doctor delay: time interval from the first visit to a medical institution to the diagnosis of tuberculosis of 1 month or longer
 Total delay: time interval from the onset of symptoms to the diagnosis of tuberculosis is 3 months or longer

Previous table Proportion of mode of detection among newly notified TB patients by age group, 2019

Age groups	Newly notified TB patients <i>n</i>	Individual medical checkup %	Mass screening				Contact examination		Medical institutions			Others %	Unknown %
			Schools %	Residents %	Employees %	Facilities %	Family %	Others %	Outpatients with TB symptoms (*1) %	Inpatients with other diseases %	Outpatients with other diseases %		
All forms of TB													
Total	14,460	1.9	1.6	2.2	6.8	0.5	1.5	2.5	53.6	15.8	11.7	0.7	0.4
0-14	38	2.6	2.6	0.0	0.0	0.0	28.9	5.3	42.1	5.3	5.3	7.9	0.0
15-19	142	2.8	33.8	0.7	4.9	0.0	9.2	4.2	39.4	0.7	0.0	0.0	0.7
20-24	618	3.6	17.3	0.3	18.4	0.5	1.5	7.3	44.5	1.8	1.3	0.6	0.2
25-29	546	1.6	10.8	0.5	23.8	0.4	0.9	7.5	48.0	1.5	2.2	0.4	0.9
30-34	369	2.7	1.6	0.3	26.6	1.4	2.2	4.1	52.3	3.0	3.5	0.3	0.3
35-39	398	2.0	1.0	0.8	29.4	0.8	0.8	4.8	53.5	1.5	2.3	0.0	0.8
40-44	439	3.2	0.0	1.6	25.5	0.5	2.3	6.4	49.7	4.1	4.1	1.6	0.5
45-49	546	3.5	0.2	1.8	17.6	0.9	3.3	5.5	52.6	4.4	8.1	0.9	0.5
50-54	547	2.6	0.0	1.6	19.0	0.7	2.6	4.6	51.0	4.9	9.9	0.9	0.5
55-59	507	2.8	0.0	1.8	12.8	0.2	3.6	4.7	49.9	8.5	13.0	1.4	0.4
60-64	608	4.1	0.0	2.6	10.0	0.5	3.0	3.6	51.0	10.7	11.7	1.2	0.7
65-69	864	2.8	0.0	3.2	5.1	0.6	2.0	2.3	51.4	12.7	16.9	1.7	0.2
70-74	1,172	2.8	0.0	4.8	2.4	0.3	1.3	1.6	50.7	15.5	18.3	1.1	0.5
75-79	1,638	1.7	0.0	3.4	0.2	0.2	1.0	0.7	53.7	18.1	19.0	0.5	0.4
80-84	1,951	1.4	0.0	2.9	0.1	0.3	0.9	1.1	55.2	21.3	15.7	0.5	0.4
85-89	2,110	0.6	0.0	1.8	0.1	0.6	0.7	0.7	57.9	24.1	12.5	0.4	0.4
90+	1,967	0.6	0.0	1.0	0.0	1.0	0.2	0.7	59.5	28.4	7.7	0.4	0.4
(Re-count) Sputum smear positive pulmonary TB													
Total	5,231	1.2	0.8	1.7	4.4	0.6	0.4	0.9	62.2	16.2	9.9	0.5	0.5
0-14	0	-	-	-	-	-	-	-	-	-	-	-	-
15-19	38	0.0	28.9	0.0	7.9	0.0	2.6	0.0	57.9	0.0	0.0	0.0	0.0
20-24	159	0.6	13.2	0.0	18.2	0.0	1.3	2.5	56.6	2.5	1.9	0.0	0.0
25-29	137	3.6	5.8	0.7	11.7	0.7	0.7	1.5	68.6	0.7	2.2	0.7	1.5
30-34	86	1.2	0.0	0.0	16.3	2.3	1.2	1.2	73.3	1.2	2.3	1.2	0.0
35-39	113	1.8	0.0	1.8	24.8	1.8	0.0	0.9	66.4	0.0	0.0	0.0	0.9
40-44	136	2.2	0.0	0.7	16.2	0.7	0.0	4.4	64.7	4.4	3.7	1.5	0.0
45-49	172	2.9	0.0	0.6	14.0	1.2	1.7	4.1	64.5	1.2	6.4	1.2	0.6
50-54	196	1.5	0.0	1.0	18.9	1.0	0.5	1.5	63.3	3.6	5.6	0.5	1.0
55-59	168	1.8	0.0	1.2	11.3	0.6	1.2	1.8	62.5	9.5	8.3	1.8	0.0
60-64	204	2.5	0.0	2.9	7.8	0.0	1.0	2.0	58.3	10.8	11.3	1.5	1.0
65-69	321	1.9	0.0	2.2	4.4	0.6	0.3	0.3	62.6	13.7	12.1	1.2	0.0
70-74	422	2.1	0.0	3.3	1.4	0.0	0.0	0.7	62.3	13.7	14.7	0.7	0.7
75-79	613	0.7	0.0	2.4	0.2	0.2	0.3	0.8	58.7	18.4	16.3	0.2	0.8
80-84	727	1.2	0.0	2.5	0.1	0.1	0.7	0.3	59.7	21.0	13.2	0.6	0.3
85-89	868	0.5	0.0	1.6	0.0	0.5	0.1	0.5	61.8	23.6	10.5	0.1	0.6
90+	871	0.2	0.0	0.9	0.0	1.1	0.1	0.3	65.1	24.8	6.8	0.2	0.3

TB: tuberculosis

TB symptoms: Respiratory symptoms such as cough, sputum expectoration, bloody sputum, and hemoptysis; and other symptoms such as wheezing, chest pain, back pain, dyspnea, fever, night sweating, fatigue tendency, and weight loss.

Previous table Number of newly notified TB patients by occupation, sex and age group, 2019

Sex/Age group	Total	Service workers	Nurses/Public health nurses	Medical doctors	Other medical workers	Teachers/Nursery nurses	Pupils/Students	Other regular workers	Other temporary/daily workers	Other self-employed	Housekeepers	Infants/Little children	Jobless/ Others	Unknown
Male	8,521	189	14	33	70	25	312	1,593	289	448	6	5	5,384	153
0-14	20	0	0	0	0	0	11	0	0	0	0	5	4	0
15-19	78	2	0	0	1	0	62	4	1	0	0	0	7	1
20-24	384	9	1	0	4	1	163	146	16	1	1	0	34	8
25-29	303	5	3	0	7	0	59	168	15	2	0	0	33	11
30-39	416	32	2	3	17	3	14	234	21	17	1	0	60	12
40-49	573	40	3	4	18	4	3	318	20	57	0	0	99	7
50-59	706	31	3	4	10	5	0	355	41	77	0	0	161	19
60-69	1,011	36	1	8	9	9	0	256	78	99	0	0	488	27
70-79	1,888	30	1	6	4	3	0	100	89	128	2	0	1,484	41
80+	3,142	4	0	8	0	0	0	12	8	67	2	0	3,014	27
Female	5,939	160	138	6	151	34	208	537	161	106	167	12	4,163	96
0-14	18	0	0	0	0	0	5	0	0	0	0	12	1	0
15-19	64	2	0	0	0	0	49	5	2	0	0	0	1	0
20-24	234	16	5	0	10	3	92	64	7	0	4	0	29	4
25-29	243	19	11	1	12	5	47	100	7	0	5	0	34	2
30-39	351	34	25	2	20	5	14	111	36	8	25	0	61	10
40-49	412	36	42	1	44	8	0	111	27	17	33	0	80	13
50-59	348	24	33	2	40	8	0	84	28	12	15	0	90	12
60-69	461	19	19	0	21	5	1	44	29	26	35	0	251	11
70-79	922	7	3	0	3	0	0	16	22	29	28	0	793	21
80+	2,886	3	0	0	1	0	0	2	3	14	22	0	2,819	22

Previous table Proportion of mode of detection among newly notified pulmonary TB patients aged 20-59 years by occupation, 2019

	Pulmonary TB patients	Individual medical checkup	Mass screening			Contact examination		Clinics/Hospitals			Others/Unknown
			Residents	Employees	Schools/Facilities	Family	Others	Outpatients with TB symptoms(*2)	Inpatients with other diseases	Outpatients with other diseases	
Total	3,210	2.9	1.2	25.0	6.2	2.6	6.8	44.6	2.8	4.9	3.1
Service workers	194	1.0	2.1	24.7	0.5	1.0	2.6	58.8	2.6	3.1	3.6
Medical workers(*1)	275	1.8	0.4	30.5	0.7	1.8	18.5	39.6	0.7	3.6	2.2
Teachers/ Nursery nurses	30	3.3	6.7	33.3	0.0	3.3	10.0	40.0	3.3	0.0	0.0
Students	350	2.9	0.3	2.9	47.4	0.6	10.6	29.4	0.9	0.9	4.3
Other regular workers	1,386	2.5	0.4	39.8	0.3	2.3	5.2	40.7	2.7	4.5	1.7
Other temporary/ daily workers	168	1.2	1.8	20.8	1.2	2.4	5.4	53.0	2.4	6.5	5.4
Other self-employed	154	5.2	4.5	10.4	0.0	1.9	1.3	63.6	2.6	9.7	0.6
Housekeepers	58	6.9	6.9	5.2	0.0	13.8	0.0	58.6	1.7	5.2	1.7
Jobless/ Others	527	4.4	1.9	7.6	4.4	4.6	7.0	50.3	5.9	8.7	5.3
Unknown	68	4.4	1.5	8.8	2.9	2.9	1.5	64.7	1.5	1.5	10.3

*1 Medical workers include nurses, public health nurses, medical doctors and dentists, physical therapists, occupational therapists, medical technologists, radiographers, and co-medicals.

*2 TB symptoms: Respiratory symptoms such as cough, sputum expectoration, bloody sputum, and hemoptysis; and other symptoms such as wheezing, chest pain, back pain, dyspnea, fever, night sweating, fatigue tendency, and weight loss.

【Tuberculosis Characteristics upon Diagnosis】

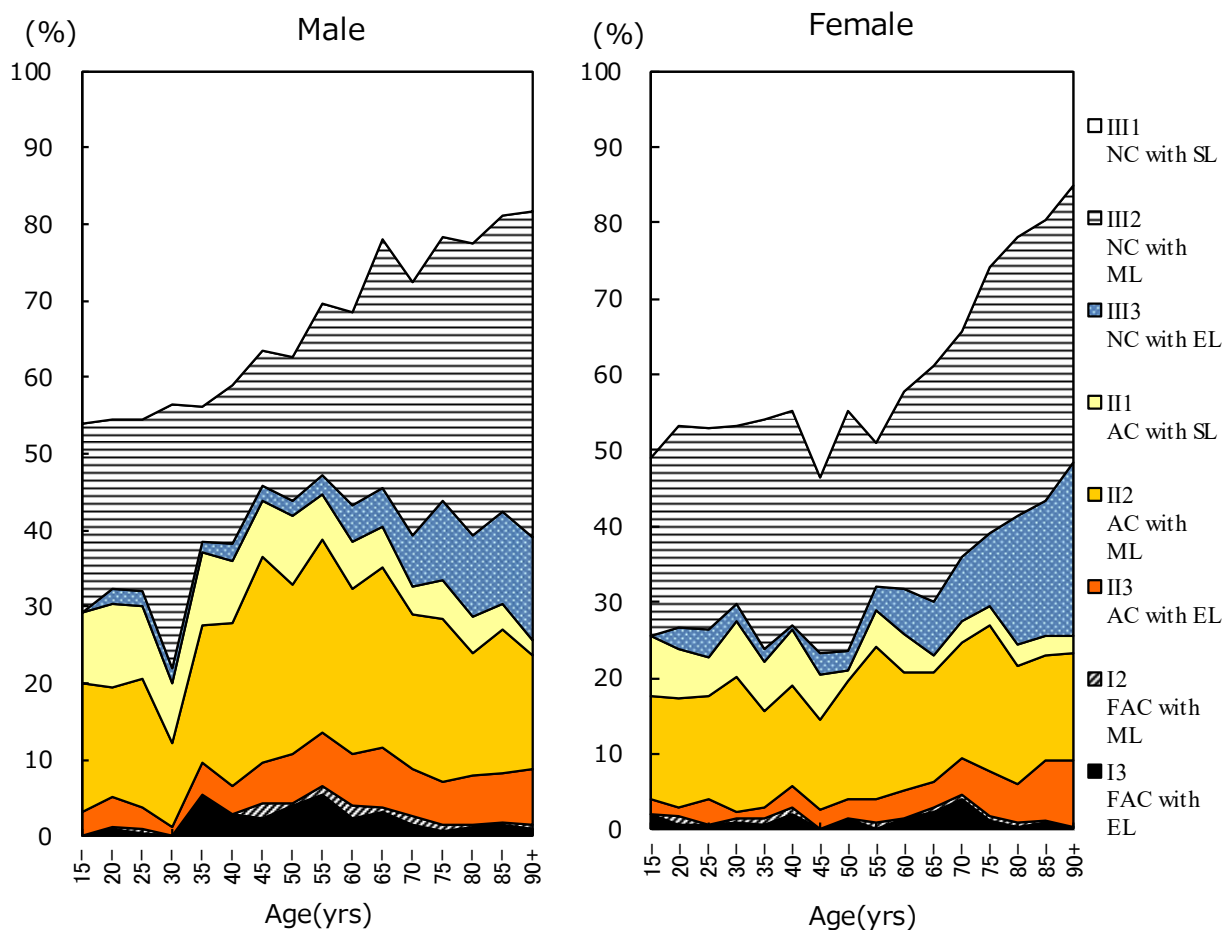


Fig.3 Proportion of cases classified by X-ray classification by sex and 5-yearage group, 2019
 NC : Non-cavitary SL : Slight lesion AC : Advanced cavitary ML : Moderate lesion
 FAC: Far-advance cavitary EL : Extensive lesion

Table 2 Number of newly notified tuberculosis patients with HIV infection, by sex and age group, 2019 and 2007–2019

Age group	Sputum smear positive		Other bacteriologic ally- positive		Bacteriologically - negative		Extra-pulmonary		Total	
	M	F	M	F	M	F	M	F	M	F
2019 Calendar year										
Total	9 (4)	2 (2)	5 (2)	1	3 (2)	1 (1)	6 (2)	2 (2)	23 (10)	6 (5)
0-19	0	0	0	0	0	0	0	0	0	0
20-24	2 (2)	0	0	0	0	0	0	0	2 (2)	0
25-29	0	1 (1)	0	0	0	0	1 (1)	0	1 (1)	1 (1)
30-34	0	0	1 (1)	0	0	0	1	0	2 (1)	0
35-39	0	0	2	0	2 (2)	1 (1)	1 (1)	0	5 (3)	1 (1)
40-44	3 (1)	1 (1)	0	0	1	0	0	1 (1)	4 (1)	2 (2)
45-49	1 (1)	0	1	0	0	0	0	0	2 (1)	0
50-54	0	0	0	0	0	0	1	0	1	0
55-59	1	0	1 (1)	0	0	0	1	1 (1)	3 (1)	1 (1)
60-64	2	0	0	0	0	0	1	0	3	0
65-69	0	0	0	0	0	0	0	0	0	0
70-74	0	0	0	1	0	0	0	0	0	1
75-79	0	0	0	0	0	0	0	0	0	0
80+	0	0	0	0	0	0	0	0	0	0
2007-2019 Calendar year										
Total	183 (23)	45 (22)	102 (25)	16 (10)	48 (10)	11 (8)	215 (44)	32 (18)	548 (102)	104 (58)
0-19	1 (1)	0	0	0	1 (1)	0	2	0	4 (2)	0
20-24	8 (6)	0	4 (3)	0	1 (1)	1 (1)	2 (1)	1	15 (11)	2 (1)
25-29	10 (5)	7 (6)	2 (1)	1 (1)	1 (1)	2 (2)	14 (4)	1 (1)	27 (11)	11 (10)
30-34	13 (3)	5 (5)	13 (2)	4 (3)	4 (2)	1 (1)	28 (10)	5 (3)	58 (17)	15 (12)
35-39	25 (2)	4 (3)	21 (6)	3 (3)	8 (2)	3 (3)	36 (9)	6 (5)	90 (19)	16 (14)
40-44	32 (2)	7 (5)	16 (5)	0	9 (2)	3 (1)	44 (14)	8 (6)	101 (23)	18 (12)
45-49	18 (2)	3 (3)	13 (5)	1 (1)	6 (1)	0	35 (5)	2	72 (13)	6 (4)
50-54	14 (1)	1	12 (2)	2 (1)	5	0	16 (1)	0	47 (4)	3 (1)
55-59	10	0	5 (1)	0	4	0	11	3 (3)	30 (1)	3 (3)
60-64	19	1	6	1 (1)	3	0	8	0	36	2 (1)
65-69	10	0	5	0	4	0	10	1	29	1
70-74	6 (1)	3	2	2	1	0	4	2	13 (1)	7
75-79	6	1	0	0	1	0	3	2	10	3
80+	11	13	3	2	0	1	2	1	16	17

() : Re-count of foreigners

HIV : Human Immunodeficiency Virus. M : male patients, F : female patients.

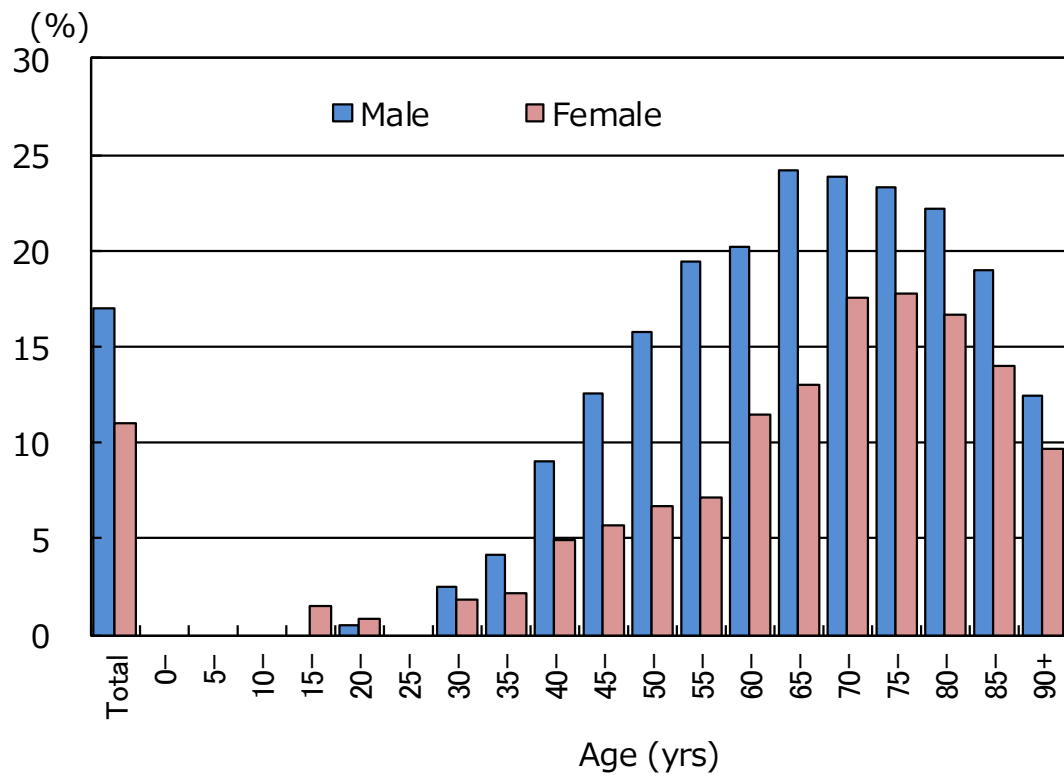


Fig.4 Proportion of newly notified tuberculosis patients with diabetes mellitus in each age-group by sex, 2019

Table 3 Drug susceptibility test results among newly notified pulmonary tuberculosis patients, by treatment history, 2012 – 2019

Treatment history, Culture examination results, Drug susceptibility test results	2012				2013				2014				2015				2016				2017				2018				2019			
	n	%	%	%	n	%	%	%	n	%	%	%	n	%	%	%	n	%	%	%	n	%	%	%	n	%	%	%	n	%	%	%
Total																																
Pulmonary tuberculosis	16,432	100%			15,972	100%			15,149	100%			14,123	100%			13,608	100%			13,011	100%			12,033	100%			11,094	100%		
Culture result obtained	14,058	85.6			13,311	83.3			12,909	85.2			12,260	86.8			12,255	90.1			11,764	90.4			11,070	92.0			9,968	89.9		
Culture positive	11,261	68.5	100%		10,523	65.9	100%		10,259	67.7	100%		10,035	71.1	100%		9,878	72.6	100%		9,580	73.6	100%		9,016	74.9	100%		8,110	73.1	100%	
DST result obtained	8,347		74.1	100%	7,701		73.2	100%	7,645		74.5	100%	7,630		76.0	100%	7,732		78.3	100%	7,891		82.4	100%	7,570		84.0	100%	6,658		82.1	100%
MDR	60		0.7	47	0.6		4.8	0.6	56		0.7	48	0.6		0.6	49	0.6		0.6	52	0.7		0.7	55	0.7		0.7	44				
Any INH resistance	380		4.6	369	4.8		3.4	4.8	349		4.6	372	4.9		3.6	369	4.8		3.8	383	4.9		3.7	377	5.0		4.6	359				
Any RFP resistance	73		0.9	64	0.8		0.7	0.8	76		1.0	77	1.0		0.7	74	1.0		0.8	80	1.0		0.9	87	1.1		1.0	65				
Any resistance*	810		9.7	757	9.8		6.4	9.8	749		9.8	767	10.1		7.3	741	9.6		6.8	853	10.8		8.0	781	10.3		9.3	719				
New treatment																																
Pulmonary tuberculosis	15,040	100%			14,727	100%			13,956	100%			13,102	100%			12,686	100%			12,174	100%			11,298	100%			10,405	100%		
Culture result obtained	12,882	85.7			12,279	83.4			11,897	85.2			11,394	87.0			11,435	90.1			11,018	90.5			10,405	92.1			9,358	89.9		
Culture positive	10,379	69.0	100%		9,782	66.4	100%		9,523	68.2	100%		9,379	71.6	100%		9,284	73.2	100%		9,030	74.2	100%		8,536	75.6	100%		7,652	73.5	100%	
DST result obtained	7,676		74.0	100%	7,166		73.3	100%	7,104		74.6	100%	7,135		76.1	100%	7,278		78.4	100%	7,434		82.3	100%	7,171		84.0	100%	6,288		82.2	100%
MDR	38		0.5	31	0.4		0.4	0.4	40		0.6	33	0.5		0.5	37	0.5		0.5	41	0.6		0.6	41	0.6		0.6	35				
Any INH resistance	310		4.0	326	4.5		2.8	4.5	288		4.1	317	4.4		3.1	316	4.3		3.3	338	4.5		3.3	331	4.6		3.4	319				
Any RFP resistance	46		0.6	42	0.6		0.3	0.6	58		0.8	58	0.8		0.4	56	0.8		0.6	62	0.8		0.7	68	0.9		0.8	52				
Any resistance*	712		9.3	680	9.5		4.9	9.5	664		9.3	686	9.6		5.0	659	9.1		6.3	773	10.4		7.6	717	10.0		8.4	656				
Re-treatment																																
Pulmonary tuberculosis	1,094	100%			1,013	100%			968	100%			851	100%			735	100%			660	100%			575	100%			542	100%		
Culture result obtained	959	87.7			852	84.1			848	87.6			732	86.0			665	90.5			605	91.7			532	92.5			477	88.0		
Culture positive	693	63.3	100%		586	57.8	100%		591	61.1	100%		534	62.7	100%		462	62.9	100%		423	64.1	100%		365	63.5	100%		341	62.9	100%	
DST result obtained	555		80.1	100%	435		74.2	100%	449		76.0	100%	412		77.2	100%	358		77.5	100%	362		85.6	100%	323		88.5	100%	286		83.9	100%
MDR	22		4.0	16	3.7		1.5	3.7	15		3.3	14	3.4		1.2	12	3.4		1.2	9	2.5		1.1	11	3.4		1.1	9				
Any INH resistance	67		12.1	35	8.0		4.1	12.7	57		12.7	49	11.9		5.1	51	14.2		5.6	36	9.9		4.1	41	12.7		3.6	36				
Any RFP resistance	26		4.7	22	5.1		1.7	5.1	17		3.8	18	4.4		1.6	16	4.5		1.5	15	4.1		1.6	16	5.0		1.3	13				
Any resistance*	94		16.9	65	14.9		5.7	16.9	79		17.6	72	17.5		6.4	70	19.6		7.0	65	18.0		5.8	58	18.0		5.6	56				
No information about treatment history																																
Pulmonary tuberculosis	298	100%			232	100%			225	100%			170	100%			187	100%			177	100%			160	100%			147	100%		
Culture result obtained	217	72.8			180	77.6			164	72.9			134	78.8			155	82.9			141	79.7			133	83.1			133	90.5		
Culture positive	189	63.4	100%		155	66.8	100%		145	64.4	100%		122	71.8	100%		132	70.6	100%		127	71.8	100%		115	71.9	100%		117	79.6	100%	
DST result obtained	116		61.4	100%	100		64.5	100%	92		63.4	100%	83		68.0	100%	96		72.7	100%	95		74.8	100%	76		66.1	100%	84		71.8	100%
MDR	0		0.0	0	0.0		0.0	0.0	1		1.1	1	1.2		0.0	0	0.0		0.0	2	2.1		3.0	3	3.9		0.0	0				
Any INH resistance	3		2.6	8	8.0		4.0	8.0	4		4.3	6	7.2		2.1	9	9.5		5.3	9	5.5		4.1	5	6.6		4.8	4				
Any RFP resistance	1		0.9	0	0.0		0.0	0.0	1		1.1	1	1.2		2.1	3	3.2		1.8	3	3.2		2.0	3	3.9		0.0	0				
Any resistance*	4		3.4	12	12.0		5.2	12.0	6		6.5	9	10.8		3.6	12	12.5		7.1	15	15.8		11.5	6	7.9		5.6	7				

DST: Drug susceptibility test MDR : Multi-drug resistant, i.e., resistant to at least INH and RFP INH: isoniazid RFP: rifampicin

Cases having drug resistance are counted independently by drug.

*: resistant to either INH, RFP, SM, or EB

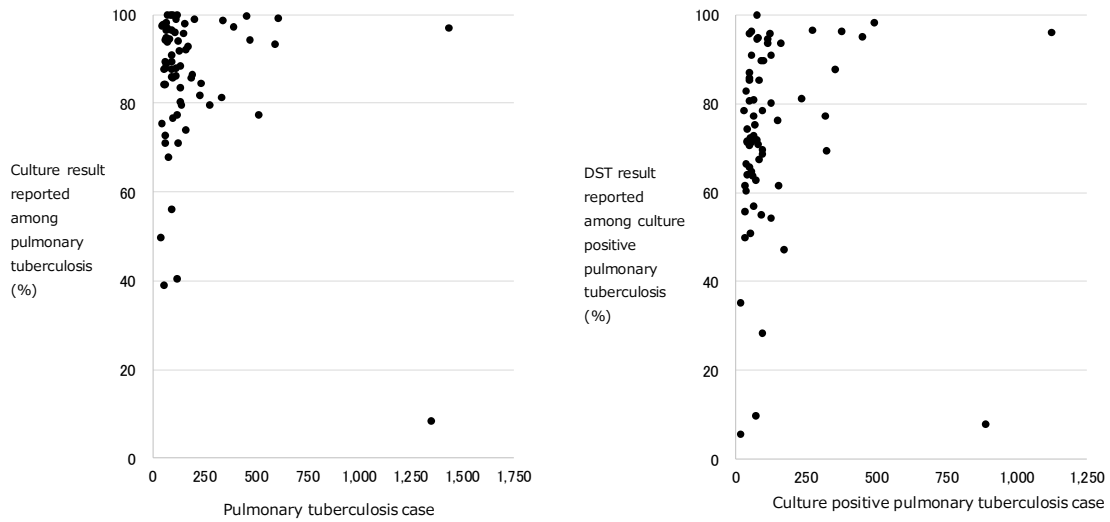
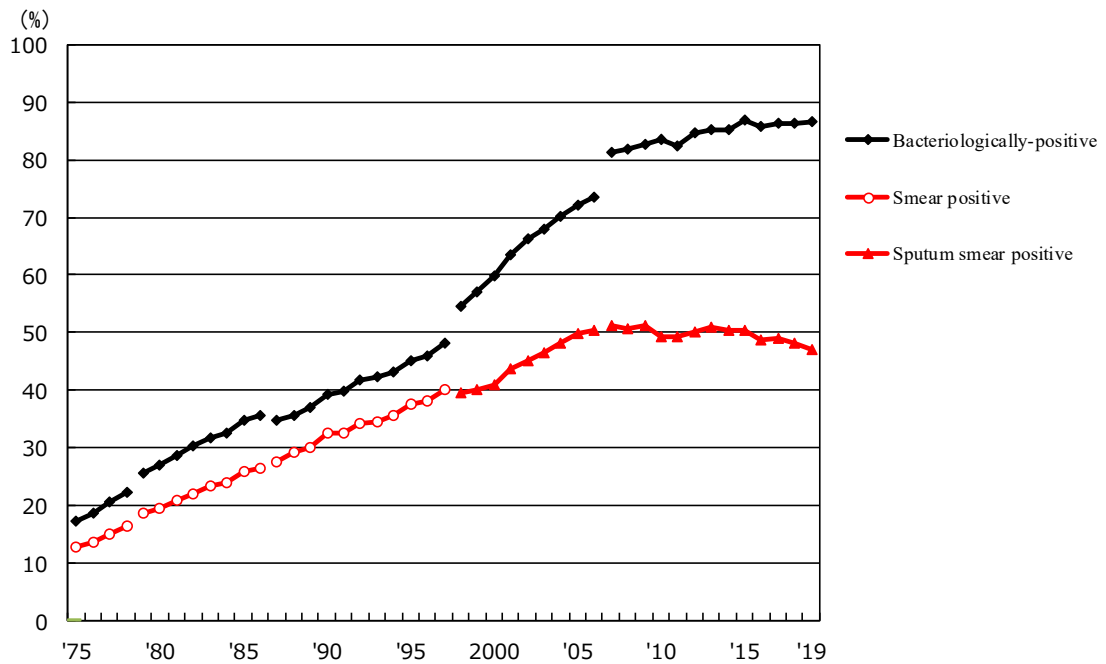


Fig. 5 Scatter plot of culture results reported among pulmonary tuberculosis patients and anti-tuberculosis drug susceptibility test results among newly notified pulmonary tuberculosis patients, by prefecture and major city, 2019



Previous Fig

Proportion of bacteriologically confirmed cases among newly notified pulmonary tuberculosis patients, 1975-2019

Sources of information and subjects:

Annual tuberculosis reports from public health centers

1975-1978: All forms of tuberculosis

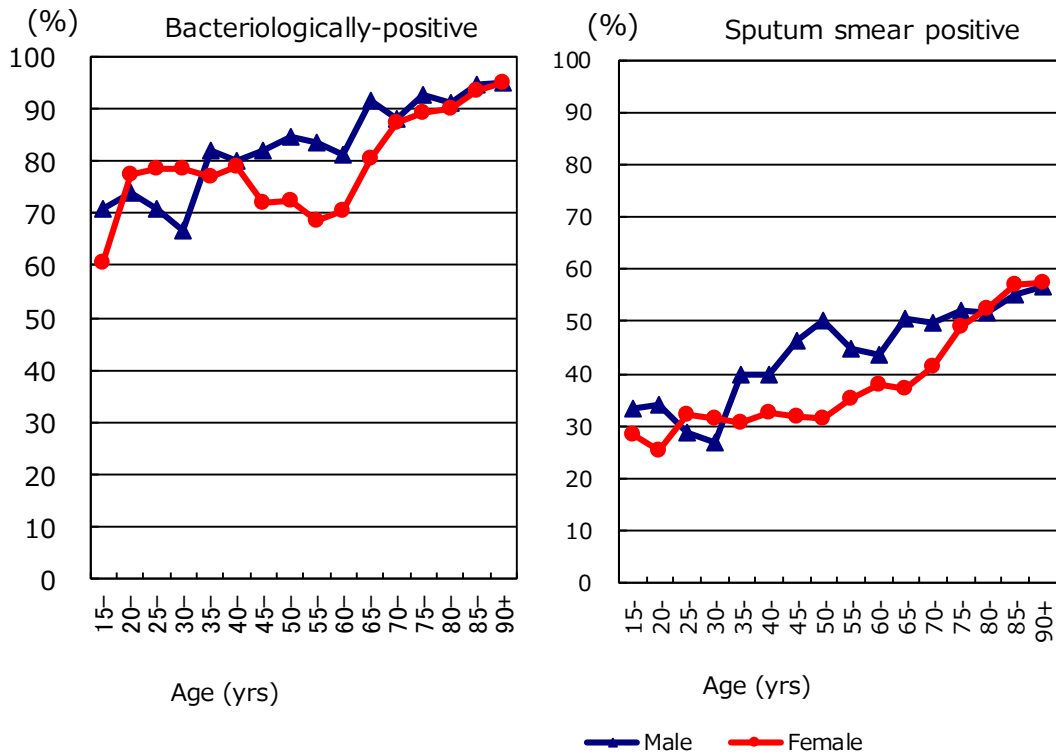
1979-1986: Pulmonary tuberculosis

Nationwide computerized tuberculosis surveillance system

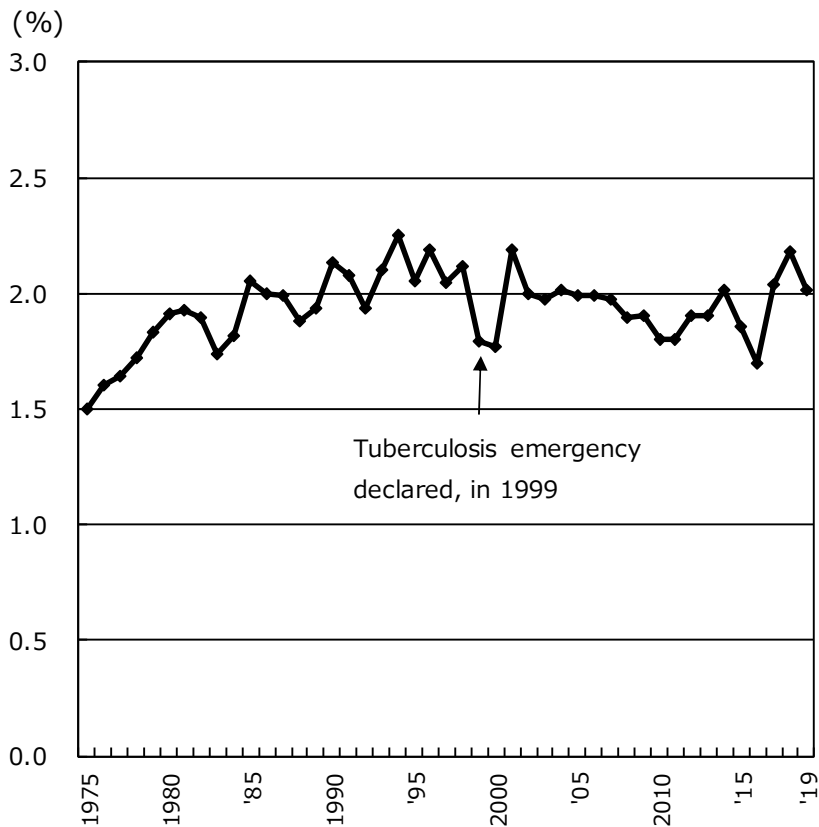
1987-1997: Pulmonary Tuberculosis

1998-2006: Pulmonary tuberculosis (New patient criteria for notification were applied)

2007-2009: Pulmonary tuberculosis (Item of nucleic acid amplification was added)



Previous Fig. Proportion of bacteriologically confirmed cases among newly notified pulmonary tuberculosis patients by sex and 5-year age group, 2019



Previous Fig. Proportion of far-advanced cavitary cases among newly notified pulmonary Tuberculosis patients, 1975-2019

Previous table Proportion of cavitary or/and sputum smear positive cases among newly notified pulmonary TB patients aged 30-59 years, 2019

	Male								Female							
	Pulmonary TB	Cavitary or sputum smear(+)			Cavitary and sputum smear(+)			Pulmonary TB	Cavitary or sputum smear(+)			Cavitary and sputum smear(+)				
		n	%	Ratio	n	%	Ratio		n	%	Ratio	n	%	Ratio		
Service workers	89	53	59.6	1.6	30	33.7	2.3	70	37	52.9	1.6	19	27.1	4.7		
Medical workers	55	21	38.2	1.0	8	14.5	1.0	174	56	32.2	1.0	10	5.7	1.0		
Teachers/ Nursery nurses	8	4	50.0	1.3	0	0.0	0.0	16	7	43.8	1.4	5	31.3	5.4		
Other regular workers	765	371	48.5	1.3	153	20.0	1.4	230	88	38.3	1.2	33	14.3	2.5		
Other temporary/ daily workers	70	50	71.4	1.9	31	44.3	3.0	64	30	46.9	1.5	9	14.1	2.4		
Other self-employed	123	81	65.9	1.7	47	38.2	2.6	28	11	39.3	1.2	5	17.9	3.1		
Jobless	234	160	68.4	1.8	84	35.9	2.5	133	59	44.4	1.4	20	15.0	2.6		
Others	78	34	43.6	1.1	11	14.1	1.0	106	43	40.6	1.3	19	17.9	3.1		
Total	1,422	774	54.4		364	25.6		821	331	40.3		120	14.6			

Others:Houskeepers/ Students/ Unknown

Ratio:The ratio of each proportion to that of medical workers

Previous table Drug susceptibility test results among newly notified pulmonary tuberculosis patients, by sex and age group, 2019 and 2007–2019

Age group	Total										New treatment (Re-count)									
	Male					Female					Male					Female				
	DST result obtained	MDR	Any INH resistance	Any RFP resistance	Any resistance	DST result obtained	MDR	Any INH resistance	Any RFP resistance	Any resistance	DST result obtained	MDR	Any INH resistance	Any RFP resistance	Any resistance	DST result obtained	MDR	Any INH resistance	Any RFP resistance	Any resistance
2019 Calendar year																				
Total	4,140	22	224	41	476	2,518	22	135	24	243	3,894	18	201	34	437	2,394	17	118	18	219
0-19	42	1	6	1	9	23	1	4	1	4	42	1	6	1	9	23	1	4	1	4
20-29	303	9	36	11	56	198	5	21	5	36	292	9	35	11	55	192	4	19	4	33
30-39	191	2	11	4	34	145	3	14	3	22	182	1	10	3	33	140	2	13	2	20
40-49	287	0	14	1	33	160	1	9	1	16	271	0	14	1	32	149	1	7	1	13
50-59	370	3	25	5	50	120	1	3	1	10	350	1	23	3	47	116	1	2	1	9
60-69	529	3	24	8	68	180	2	13	3	21	497	3	23	7	65	171	2	10	2	17
70-79	901	0	44	5	100	387	4	23	5	41	842	0	38	4	89	361	2	19	3	36
80+	1,517	4	64	6	126	1,305	5	48	5	93	1,418	3	52	4	107	1,242	4	44	4	87
2007-2019 Calendar year																				
Total	60,518	437	3,080	653	7,053	32,507	256	1,477	340	3,230	55,307	290	2,558	446	6,184	30,637	167	1,230	234	2,865
0-19	473	11	46	13	95	380	3	34	4	73	454	8	43	10	92	361	3	32	4	68
20-29	3,254	72	273	92	571	2,712	70	222	90	461	3,113	56	245	71	533	2,598	50	195	66	422
30-39	3,488	32	230	50	545	2,682	44	195	57	394	3,306	25	216	43	515	2,580	34	175	43	361
40-49	4,710	39	255	63	632	2,311	22	116	32	280	4,424	29	230	45	572	2,195	14	102	23	255
50-59	6,550	59	370	98	940	1,907	24	96	34	219	6,092	34	321	63	848	1,798	10	73	19	190
60-69	10,206	65	532	117	1,323	2,819	20	144	26	334	9,372	45	443	80	1,155	2,652	14	115	18	290
70-79	13,099	85	676	121	1,553	5,695	30	247	39	567	11,818	45	521	69	1,316	5,292	14	204	20	501
80+	18,738	74	698	99	1,394	14,001	43	423	58	902	16,728	48	539	65	1,153	13,161	28	334	41	778
2007-2019 Calendar year																				
Total	100%	0.7	5.1	1.1	11.7	100%	0.8	4.5	1.0	9.9	100%	0.5	4.6	0.8	11.2	100%	0.5	4.0	0.8	9.4
0-19	100	2.3	9.7	2.7	20.1	100	0.8	8.9	1.1	19.2	100	1.8	9.5	2.2	20.3	100	0.8	8.9	1.1	18.8
20-29	100	2.2	8.4	2.8	17.5	100	2.6	8.2	3.3	17.0	100	1.8	7.9	2.3	17.1	100	1.9	7.5	2.5	16.2
30-39	100	0.9	6.6	1.4	15.6	100	1.6	7.3	2.1	14.7	100	0.8	6.5	1.3	15.6	100	1.3	6.8	1.7	14.0
40-49	100	0.8	5.4	1.3	13.4	100	1.0	5.0	1.4	12.1	100	0.7	5.2	1.0	12.9	100	0.6	4.6	1.0	11.6
50-59	100	0.9	5.6	1.5	14.4	100	1.3	5.0	1.8	11.5	100	0.6	5.3	1.0	13.9	100	0.6	4.1	1.1	10.6
60-69	100	0.6	5.2	1.1	13.0	100	0.7	5.1	0.9	11.8	100	0.5	4.7	0.9	12.3	100	0.5	4.3	0.7	10.9
70-79	100	0.6	5.2	0.9	11.9	100	0.5	4.3	0.7	10.0	100	0.4	4.4	0.6	11.1	100	0.3	3.9	0.4	9.5
80+	100	0.4	3.7	0.5	7.4	100	0.3	3.0	0.4	6.4	100	0.3	3.2	0.4	6.9	100	0.2	2.5	0.3	5.9

DST: Drug susceptibility test. MDR: Multi-drug resistance, i.e., resistant to at least INH and RFP. INH: Isoniazid. RFP: Rifampicin.

Previous table Drug susceptibility test results among newly notified pulmonary tuberculosis patients, by sex and age group, 2007-2019 (Re-count of foreigners)

Age group	Total										New treatment (Re-count)									
	Male					Female					Male					Female				
	DST result obtained	MDR	Any INH resistance	Any RFP resistance	Any resistance	DST result obtained	MDR	Any INH resistance	Any RFP resistance	Any resistance	DST result obtained	MDR	Any INH resistance	Any RFP resistance	Any resistance	DST result obtained	MDR	Any INH resistance	Any RFP resistance	Any resistance
2007-2019 Calendar year																				
Total	2488	95	294	117	472	2491	109	312	133	494	2368	68	256	88	428	2373	83	275	102	443
0-19	151	10	32	12	48	94	2	13	3	17	146	7	29	9	45	91	2	12	3	16
20-29	1,343	63	172	77	269	1,159	61	153	76	257	1,289	48	150	59	245	1,118	46	134	58	232
30-39	406	13	40	18	68	614	26	92	29	127	387	11	38	16	64	587	20	84	22	117
40-49	196	5	17	6	32	312	7	23	9	44	183	1	12	1	25	291	4	20	5	38
50-59	130	1	6	1	12	142	6	19	8	27	124	0	5	0	11	128	5	14	7	20
60-69	114	3	15	3	26	67	3	7	4	10	104	3	13	3	24	64	3	7	4	10
70-79	73	0	7	0	8	43	4	5	4	7	66	0	5	0	6	37	3	4	3	5
80+	75	0	5	0	9	60	0	0	0	5	69	0	4	0	8	57	0	0	0	5
2007-2019 Calendar year																				
Total	100%	3.8	11.8	4.7	19.0	100%	4.4	12.5	5.3	19.8	100%	2.9	10.8	3.7	18.1	100%	3.5	11.6	4.3	18.7
0-19	100	6.6	21.2	7.9	31.8	100	2.1	13.8	3.2	18.1	100	4.8	19.9	6.2	30.8	100	2.2	13.2	3.3	17.6
20-29	100	4.7	12.8	5.7	20.0	100	5.3	13.2	6.6	22.2	100	3.7	11.6	4.6	19.0	100	4.1	12.0	5.2	20.8
30-39	100	3.2	9.9	4.4	16.7	100	4.2	15.0	4.7	20.7	100	2.8	9.8	4.1	16.5	100	3.4	14.3	3.7	19.9
40-49	100	2.6	8.7	3.1	16.3	100	2.2	7.4	2.9	14.1	100	0.5	6.6	0.5	13.7	100	1.4	6.9	1.7	13.1
50-59	100	0.8	4.6	0.8	9.2	100	4.2	13.4	5.6	19.0	100	0.0	4.0	0.0	8.9	100	3.9	10.9	5.5	15.6
60-69	100	2.6	13.2	2.6	22.8	100	4.5	10.4	6.0	14.9	100	2.9	12.5	2.9	23.1	100	4.7	10.9	6.3	15.6
70-79	100	0.0	9.6	0.0	11.0	100	9.3	11.6	9.3	16.3	100	0.0	7.6	0.0	9.1	100	8.1	10.8	8.1	13.5
80+	100	0.0	6.7	0.0	12.0	100	0.0	0.0	0.0	8.3	100	0.0	5.8	0.0	11.6	100	0.0	0.0	0.0	8.8

DST: Drug susceptibility test. MDR: Multi-drug resistance, i.e., resistant to at least INH and RFP. INH: Isoniazid. RFP: Rifampicin.