



Monthly Report of Tuberculosis Surveillance, Japan - March, 2020

The reporting and recording of tuberculosis (TB) and Latent TB Infection (LTBI) are managed at public health centers (PHCs) by the nationwide computerized TB surveillance system in Japan. A monthly report is compiled from the database automatically and regularly on 4th Friday of the next month, and an annual report is also produced much like the monthly report, but with sufficient time for data correction.

Tables and figures shown in the monthly reports are as follows.

Figures

Figure 1. Number of newly notified TB cases by month, Japan, 2017-2020

Figure 2. Newly notified TB cases by sex and age, Japan, summation (Jan. - Mar.) 2020

Figure 3. Notification rate of TB cases by sex and age, Japan, summation (Jan. - Mar.) 2020

Figure 4. Notification rate of TB by prefecture, Japan, summation (Jan. - Mar.) 2020

Figure 5. Notification rate of TB by major city, Japan, summation (Jan. - Mar.) 2020

Figure 6. Number of LTBI, Japan, 2020

Figure 7. Number of LTBI by sex and age group, Japan, summation (Jan. - Mar.) 2017-2020

Tables

Table 1. Newly notified TB cases and rates by sex and age, Japan, 2020

Table 2. Newly notified sputum smear positive pulmonary TB cases and rates by sex and age, Japan, 2020

Table 3. Newly notified TB cases and rates by prefecture, Japan, 2020

Table 4. Newly notified TB cases and rates by major city, Japan, 2020

Table 5. LTBI cases and rates by sex and age, Japan, 2020

Table 6. LTBI cases and rates by prefecture, Japan, 2020

Table 7. LTBI cases and rates by major city, Japan, 2020

Figure 1. Number of newly notified TB cases by month, Japan, 2017-2020

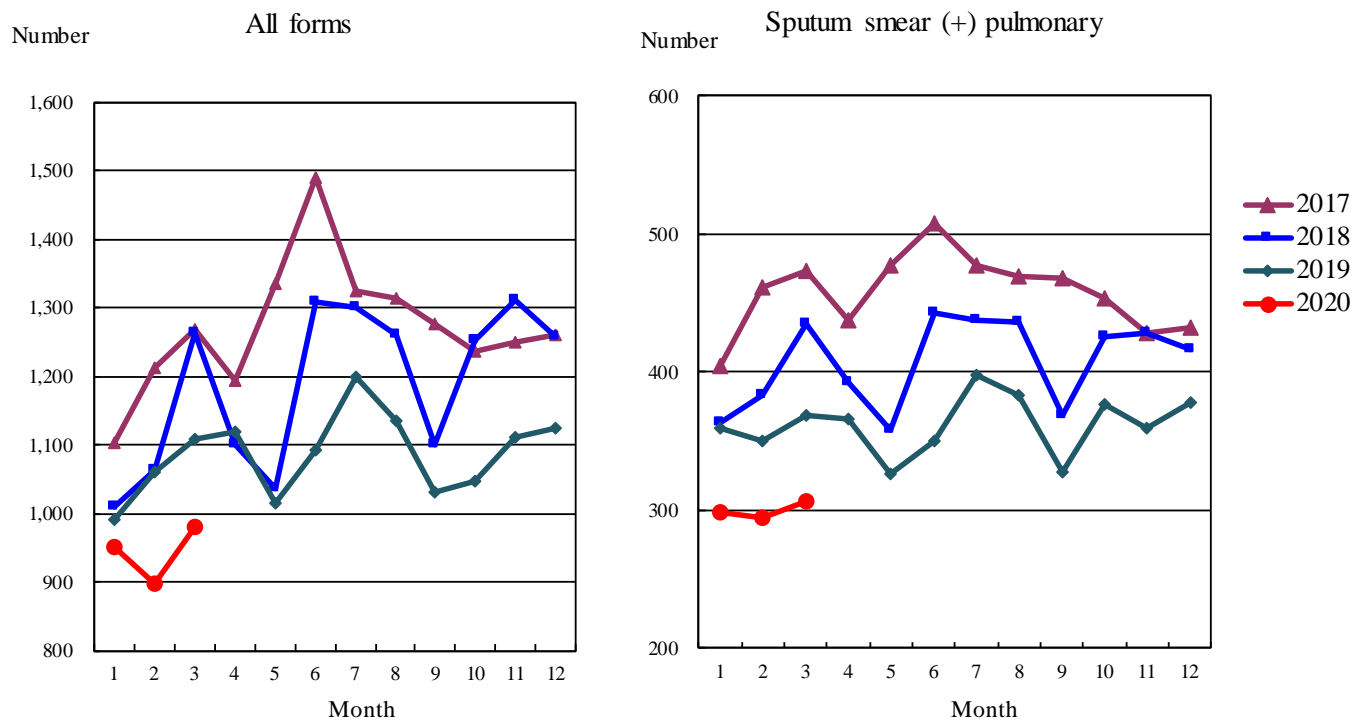


Figure 2. Newly notified TB patients by sex and age, Japan, summation (Jan.-Mar.) 2020

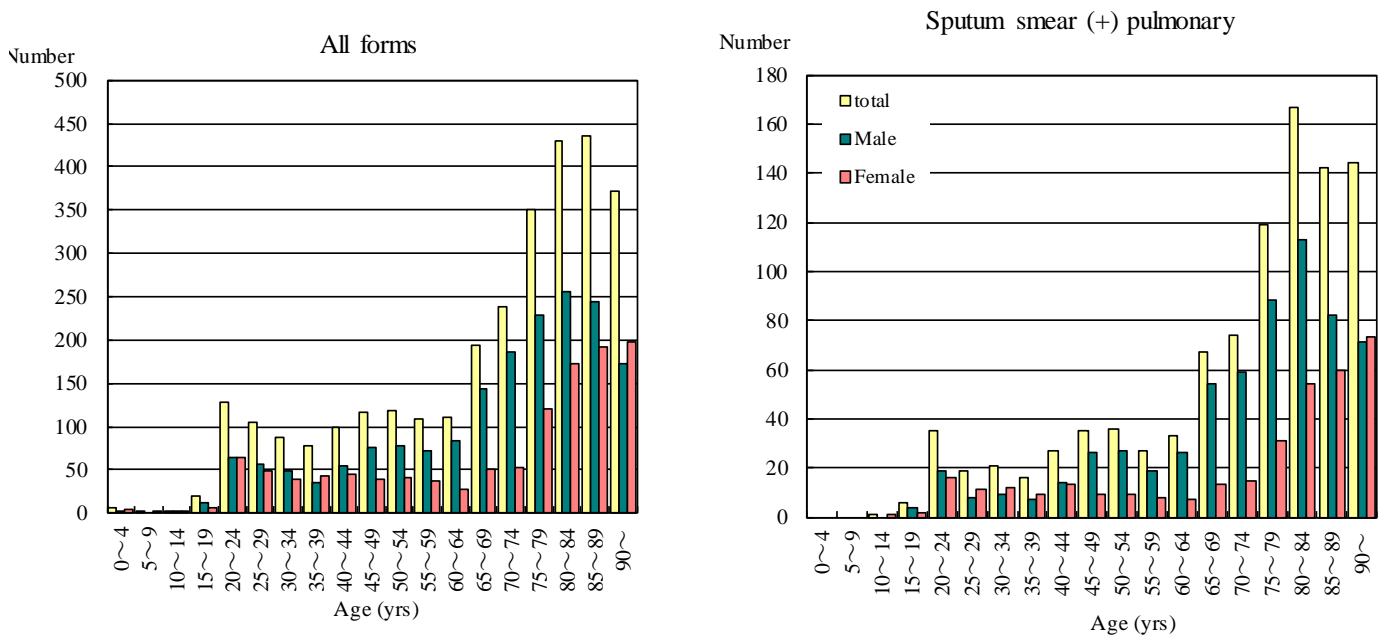


Figure 3. Notification rate of TB cases by sex and age, Japan, summation (Jan.-Mar.) 2020

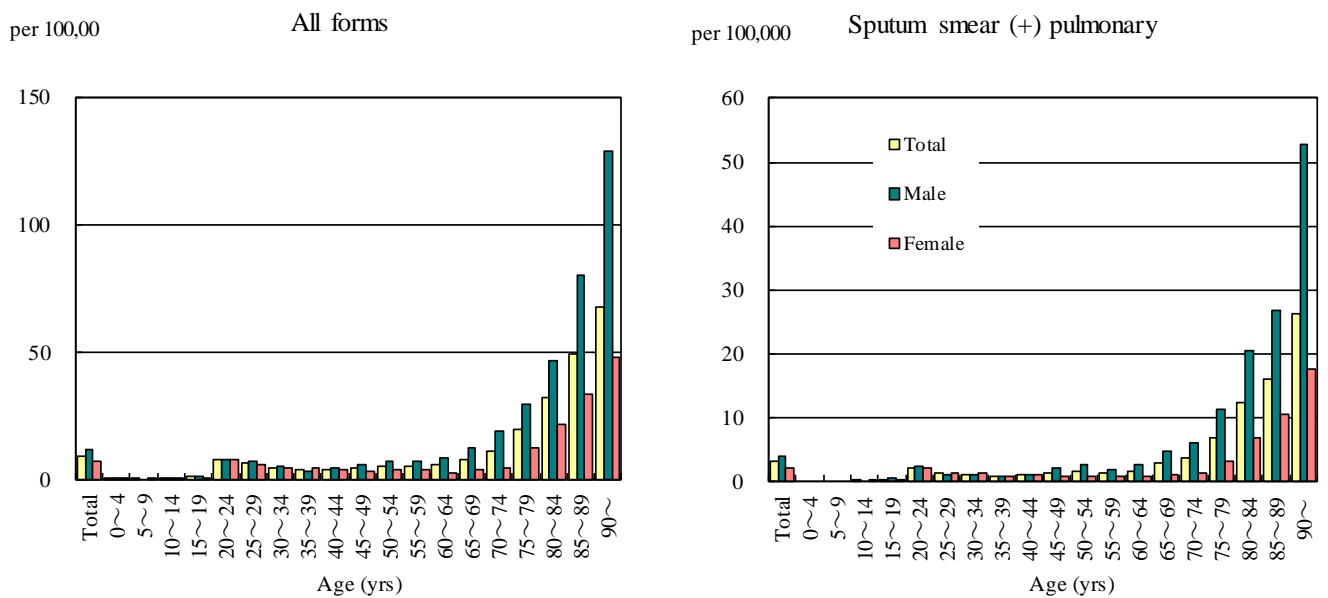


Figure 4. Notification rates of TB by prefecture, Japan, summation (Jan.-Mar.) 2020

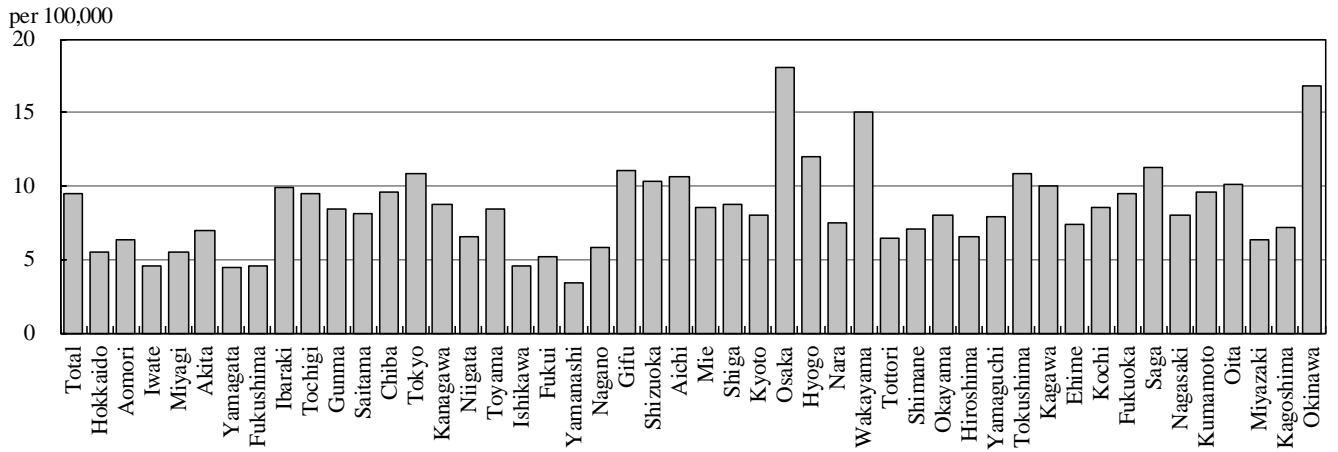


Figure 5. Notification rates of TB major city, Japan, summation (Jan.-Mar.) 2020

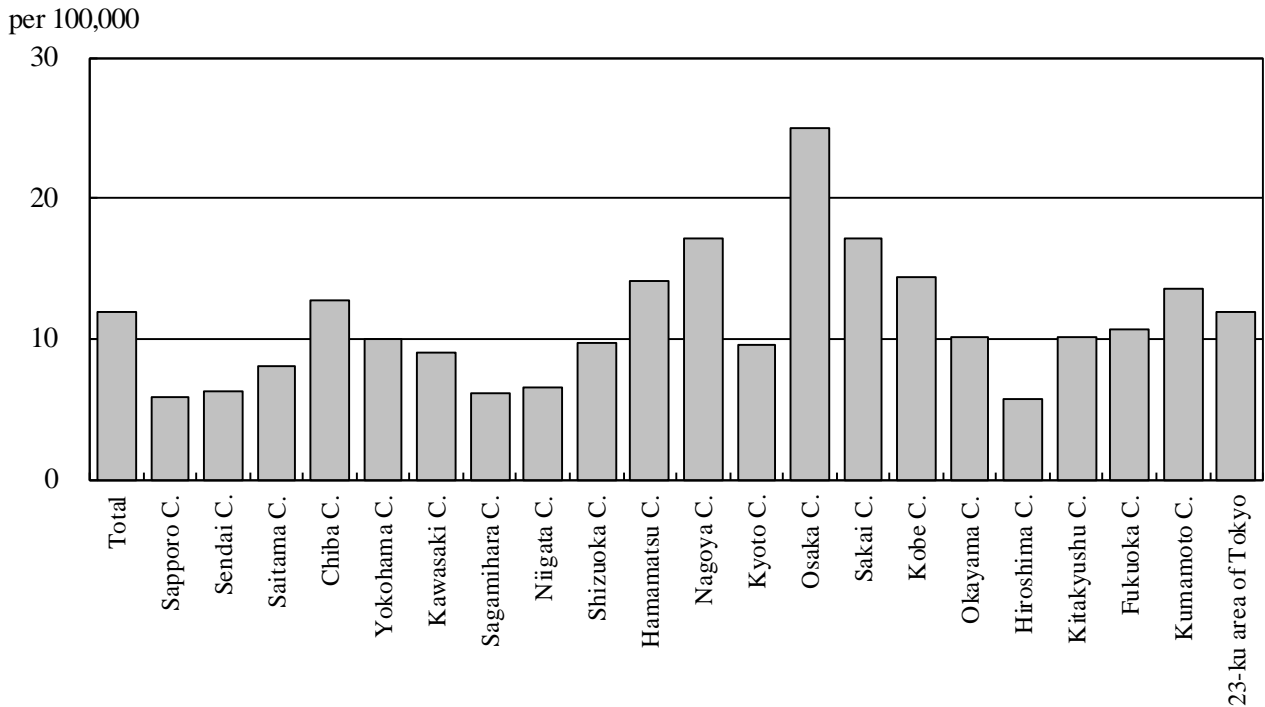


Figure 6. Number of LTBI, Japan, 2017-2020

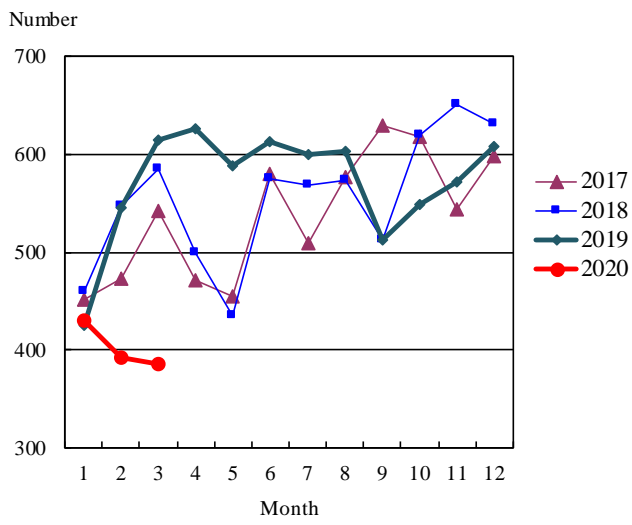


Figure 7. Number of LTBI by sex and age group, Japan, summation (Jan.-Mar.) 2020

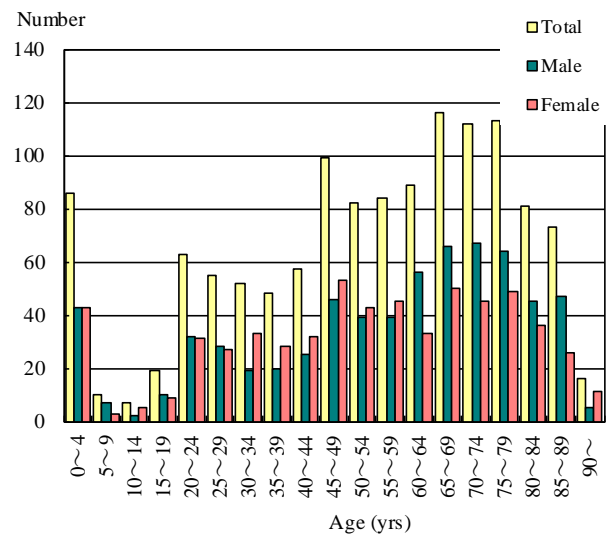


Table 1. Newly notified TB cases and rates by sex and age, Japan, 2020

	Mar.			Summation (Jan.-Mar.)			Notification rate (per 100,000)		
	Total	Male	Female	Total	Male	Female	Total	Male	Female
Total	980	591	389	2,999	1,816	1,183	9.5	11.8	7.3
0~4	2	0	2	7	3	4	0.6	0.5	0.7
5~9	0	0	0	1	0	1	0.1	0.0	0.2
10~14	1	1	0	3	1	2	0.2	0.1	0.3
15~19	4	4	0	19	12	7	1.3	1.6	1.0
20~24	45	24	21	128	64	64	8.1	7.8	8.3
25~29	26	13	13	105	57	48	6.7	7.1	6.3
30~34	28	15	13	87	48	39	5.0	5.4	4.6
35~39	19	7	12	78	35	43	4.1	3.6	4.5
40~44	27	17	10	99	54	45	4.4	4.7	4.0
45~49	39	26	13	116	76	40	4.8	6.2	3.3
50~54	40	24	16	118	77	41	5.6	7.3	3.9
55~59	35	24	11	109	72	37	5.7	7.5	3.9
60~64	32	25	7	111	84	27	5.8	9.0	2.8
65~69	71	53	18	193	143	50	8.2	12.6	4.1
70~74	79	63	16	239	187	52	11.6	19.3	4.8
75~79	116	75	41	350	229	121	20.2	29.5	12.6
80~84	130	80	50	429	256	173	32.1	46.7	21.9
85~89	156	83	73	436	245	191	49.6	80.0	33.4
90~	130	57	73	371	173	198	68.0	128.8	48.1

Temporary registrants = 64, Total of registrants and temporary registrants = 1,044

Rate: summation / (population*1/12)*100,000

Population: as of 1st Oct. 2018

Table 2. Newly notified sputum smear positive pulmonary TB cases and rates by sex and age, Japan, 2020

	Mar.			Summation (Jan.-Mar.)			Notification rate (per 100,000)		
	Total	Male	Female	Total	Male	Female	Total	Male	Female
Total	306	206	100	969	626	343	3.1	4.1	2.1
0~4	0	0	0	0	0	0	0.0	0.0	0.0
5~9	0	0	0	0	0	0	0.0	0.0	0.0
10~14	0	0	0	1	0	1	0.1	0.0	0.2
15~19	1	1	0	6	4	2	0.4	0.5	0.3
20~24	12	8	4	35	19	16	2.2	2.3	2.1
25~29	5	2	3	19	8	11	1.2	1.0	1.5
30~34	6	3	3	21	9	12	1.2	1.0	1.4
35~39	6	3	3	16	7	9	0.8	0.7	0.9
40~44	5	4	1	27	14	13	1.2	1.2	1.2
45~49	12	9	3	35	26	9	1.4	2.1	0.8
50~54	8	7	1	36	27	9	1.7	2.6	0.9
55~59	5	4	1	27	19	8	1.4	2.0	0.8
60~64	7	7	0	33	26	7	1.7	2.8	0.7
65~69	23	18	5	67	54	13	2.9	4.8	1.1
70~74	24	22	2	74	59	15	3.6	6.1	1.4
75~79	35	25	10	119	88	31	6.9	11.4	3.2
80~84	50	36	14	167	113	54	12.5	20.6	6.8
85~89	51	28	23	142	82	60	16.2	26.8	10.5
90~	56	29	27	144	71	73	26.4	52.9	17.7

Rate: summation / (population*1/12)*100,000

Population: as of 1st Oct. 2018

Table 3. Newly notified TB cases and rates by prefecture, Japan, 2020

	Mar.		Summation (Jan.-Mar.)		Notification rate (per 100,000)	
	Newly notified TB	Sputum smear (+)	Newly notified TB	Sputum smear (+)	Newly notified TB	Sputum smear (+)
Total	980	306	2,999	969	9.5	3.1
Hokkaido	28	8	73	21	5.5	1.6
Aomori	8	4	20	9	6.3	2.9
Iwate	2	0	14	8	4.5	2.6
Miyagi	5	0	32	8	5.5	1.4
Akita	5	0	17	6	6.9	2.4
Yamagata	1	0	12	5	4.4	1.8
Fukushima	2	2	21	7	4.5	1.5
Ibaraki	22	3	71	15	9.9	2.1
Tochigi	9	2	46	11	9.5	2.3
Gunma	15	5	41	12	8.4	2.5
Saitama	52	12	148	39	8.1	2.1
Chiba	38	16	150	56	9.6	3.6
Tokyo	116	36	376	118	10.9	3.4
Kanagawa	69	25	201	73	8.8	3.2
Niigata	11	2	37	10	6.6	1.8
Toyama	6	2	22	5	8.4	1.9
Ishikawa	7	4	13	6	4.5	2.1
Fukui	5	0	10	4	5.2	2.1
Yamanashi	2	1	7	2	3.4	1.0
Nagano	7	2	30	8	5.8	1.6
Gifu	15	1	55	14	11.0	2.8
Shizuoka	27	8	94	27	10.3	3.0
Aichi	73	27	200	71	10.6	3.8
Mie	9	1	38	7	8.5	1.6
Shiga	10	5	31	15	8.8	4.2
Kyoto	18	8	52	18	8.0	2.8
Osaka	135	47	398	141	18.1	6.4
Hyogo	63	19	165	53	12.0	3.9
Nara	8	0	25	5	7.5	1.5
Wakayama	11	3	35	15	15.0	6.4
Tottori	1	1	9	3	6.4	2.1
Shimane	4	2	12	5	7.1	2.9
Okayama	13	3	38	7	8.0	1.5
Hiroshima	19	7	46	14	6.5	2.0
Yamaguchi	9	2	27	9	7.9	2.6
Tokushima	7	1	20	7	10.9	3.8
Kagawa	8	3	24	5	10.0	2.1
Ehime	8	4	25	12	7.4	3.6
Kochi	5	2	15	6	8.5	3.4
Fukuoka	49	15	121	43	9.5	3.4
Saga	6	3	23	8	11.2	3.9
Nagasaki	13	4	27	7	8.1	2.1
Kumamoto	17	4	42	8	9.6	1.8
Oita	8	4	29	13	10.1	4.5
Miyazaki	3	2	17	10	6.3	3.7
Kagoshima	8	1	29	5	7.2	1.2
Okinawa	23	5	61	18	16.9	5.0

Rate: summation / (population*1/12)*100,000

Population: as of 1st Oct. 2018

Table 4. Newly notified TB cases and rates by major city, Japan, 2020

	Mar.		Summation (Jan.-Mar.)		Notification Rate (per 100,000)	
	Newly notified TB	Sputum Smear(+)	Newly notified TB	Sputum Smear(+)	Newly notified TB	Sputum Smear(+)
Total	387	130	1,105	374	11.9	4.0
Sapporo City	10	0	29	3	5.9	0.6
Sendai City	3	0	17	2	6.2	0.7
Saitama City	15	4	26	9	8.0	2.8
Chiba City	13	7	31	16	12.7	6.5
Yokohama City	29	12	93	33	9.9	3.5
Kawasaki City	11	2	34	9	9.0	2.4
Sagamihara City	3	2	11	7	6.1	3.9
Niigata City	4	2	13	6	6.5	3.0
Shizuoka City	4	2	17	7	9.7	4.0
Hamamatsu City	10	3	28	7	14.1	3.5
Nagoya City	37	13	99	40	17.1	6.9
Kyoto City	13	6	35	14	9.5	3.8
Osaka City	62	24	170	65	25.0	9.5
Sakai City	15	4	36	12	17.2	5.7
Kobe City	26	6	55	18	14.4	4.7
Okayama City	4	1	18	3	10.1	1.7
Hiroshima City	4	2	17	8	5.7	2.7
Kitakyushu City	7	2	24	7	10.2	3.0
Fukuoka City	19	6	42	15	10.6	3.8
Kumamoto City	13	3	25	4	13.5	2.2
23-ku area of Tokyo	85	29	285	89	11.9	3.7

Rate: summation / (population*1/12)*100,000

Population: as of 1st Oct. 2018

Major city: city with a population of one million or more.

Table 4 is a re-count of Table 3.

Table 5. LTBI cases and rates by sex and age, Japan, 2020

	Mar.			Summation (Jan.-Mar.)			(Ratio) LTBI/Newly notified cases		
	Total	Male	Female	Total	Male	Female	Total	Male	Female
Total	386	203	183	1,262	660	602	0.4	0.4	0.5
0~4	39	18	21	86	43	43	12.3	14.3	10.8
5~9	5	3	2	10	7	3	10.0	-	3.0
10~14	0	0	0	7	2	5	2.3	2.0	2.5
15~19	5	4	1	19	10	9	1.0	0.8	1.3
20~24	23	11	12	63	32	31	0.5	0.5	0.5
25~29	16	11	5	55	28	27	0.5	0.5	0.6
30~34	12	3	9	52	19	33	0.6	0.4	0.8
35~39	15	6	9	48	20	28	0.6	0.6	0.7
40~44	16	5	11	57	25	32	0.6	0.5	0.7
45~49	31	14	17	99	46	53	0.9	0.6	1.3
50~54	16	7	9	82	39	43	0.7	0.5	1.0
55~59	27	13	14	84	39	45	0.8	0.5	1.2
60~64	31	19	12	89	56	33	0.8	0.7	1.2
65~69	31	16	15	116	66	50	0.6	0.5	1.0
70~74	36	23	13	112	67	45	0.5	0.4	0.9
75~79	31	17	14	113	64	49	0.3	0.3	0.4
80~84	26	17	9	81	45	36	0.2	0.2	0.2
85~89	23	14	9	73	47	26	0.2	0.2	0.1
90~	3	2	1	16	5	11	0.0	0.0	0.1

LTBI: latent TB Infection

Number of LTBI is not included in the newly notified TB patients

Table 6. LTBI cases and rates by prefecture, Japan, 2020

	Mar.	Summation (Jan.-Mar.)	
	LTBI	LTBI	(Ratio) LTBI / new TB
Total	386	1,262	0.42
Hokkaido	8	35	0.48
Aomori	10	23	1.15
Iwate	5	8	0.57
Miyagi	6	28	0.88
Akita	6	8	0.47
Yamagata	1	8	0.67
Fukushima	7	22	1.05
Ibaraki	12	32	0.45
Tochigi	0	9	0.20
Gunma	3	10	0.24
Saitama	28	81	0.55
Chiba	13	58	0.39
Tokyo	54	170	0.45
Kanagawa	21	62	0.31
Niigata	2	9	0.24
Toyama	2	11	0.50
Ishikawa	2	3	0.23
Fukui	0	3	0.30
Yamanashi	4	8	1.14
Nagano	2	7	0.23
Gifu	5	21	0.38
Shizuoka	12	28	0.30
Aichi	22	71	0.36
Mie	3	10	0.26
Shiga	5	10	0.32
Kyoto	7	28	0.54
Osaka	41	166	0.42
Hyogo	23	60	0.36
Nara	4	21	0.84
Wakayama	0	5	0.14
Tottori	0	0	0.00
Shimane	2	4	0.33
Okayama	6	23	0.61
Hiroshima	7	26	0.57
Yamaguchi	1	12	0.44
Tokushima	1	4	0.20
Kagawa	2	8	0.33
Ehime	1	5	0.20
Kochi	1	2	0.13
Fukuoka	28	77	0.64
Saga	0	2	0.09
Nagasaki	1	11	0.41
Kumamoto	4	12	0.29
Oita	5	13	0.45
Miyazaki	0	2	0.12
Kagoshima	4	13	0.45
Okinawa	15	33	0.54

LTBI: Latent TB Infection

Number of LTBI is not included in the newly notified TB patients.

Table 7. LTBI cases and rates by major city, Japan, 2020

	Mar.	Summation (Jan.-Mar.)	
	LTBI	LTBI	(Ratio) LTBI / new TB
Total	136	472	0.43
Sapporo City	4	14	0.48
Sendai City	2	10	0.59
Saitama City	1	7	0.27
Chiba City	5	14	0.45
Yokohama City	5	12	0.13
Kawasaki City	7	24	0.71
Sagamihara City	6	9	0.82
Niigata City	1	3	0.23
Shizuoka City	1	3	0.18
Hamamatsu City	1	6	0.21
Nagoya City	11	29	0.29
Kyoto City	4	20	0.57
Osaka City	18	86	0.51
Sakai City	3	18	0.50
Kobe City	11	21	0.38
Okayama City	3	13	0.72
Hiroshima City	0	10	0.59
Kitakyushu City	2	11	0.46
Fukuoka City	14	34	0.81
Kumamoto City	1	7	0.28
23-ku area of Tokyo	36	121	0.42

LTBI: Latent TB Infection

Number of LTBI is not included in the newly notified TB patients,

Major city: city with a population of one million or more

Table 7 is a re-count of Table 6