



Monthly Report of Tuberculosis Surveillance, Japan – April, 2020

The reporting and recording of tuberculosis (TB) and Latent TB Infection (LTBI) are managed at public health centers (PHCs) by the nationwide computerized TB surveillance system in Japan. A monthly report is compiled from the database automatically and regularly on 4th Friday of the next month, and an annual report is also produced much like the monthly report, but with sufficient time for data correction.

Tables and figures shown in the monthly reports are as follows.

Figures

Figure 1. Number of newly notified TB cases by month, Japan, 2017-2020

Figure 2. Newly notified TB cases by sex and age, Japan, summation (Jan. - Apr.) 2020

Figure 3. Notification rate of TB cases by sex and age, Japan, summation (Jan. - Apr.) 2020

Figure 4. Notification rate of TB by prefecture, Japan, summation (Jan. - Apr.) 2020

Figure 5. Notification rate of TB by major city, Japan, summation (Jan. - Apr.) 2020

Figure 6. Number of LTBI, Japan, 2020

Figure 7. Number of LTBI by sex and age group, Japan, summation (Jan. - Apr.) 2017-2020

Tables

Table 1. Newly notified TB cases and rates by sex and age, Japan, 2020

Table 2. Newly notified sputum smear positive pulmonary TB cases and rates by sex and age, Japan, 2020

Table 3. Newly notified TB cases and rates by prefecture, Japan, 2020

Table 4. Newly notified TB cases and rates by major city, Japan, 2020

Table 5. LTBI cases and rates by sex and age, Japan, 2020

Table 6. LTBI cases and rates by prefecture, Japan, 2020

Table 7. LTBI cases and rates by major city, Japan, 2020

Figure 1. Number of newly notified TB cases by month, Japan, 2017-2020

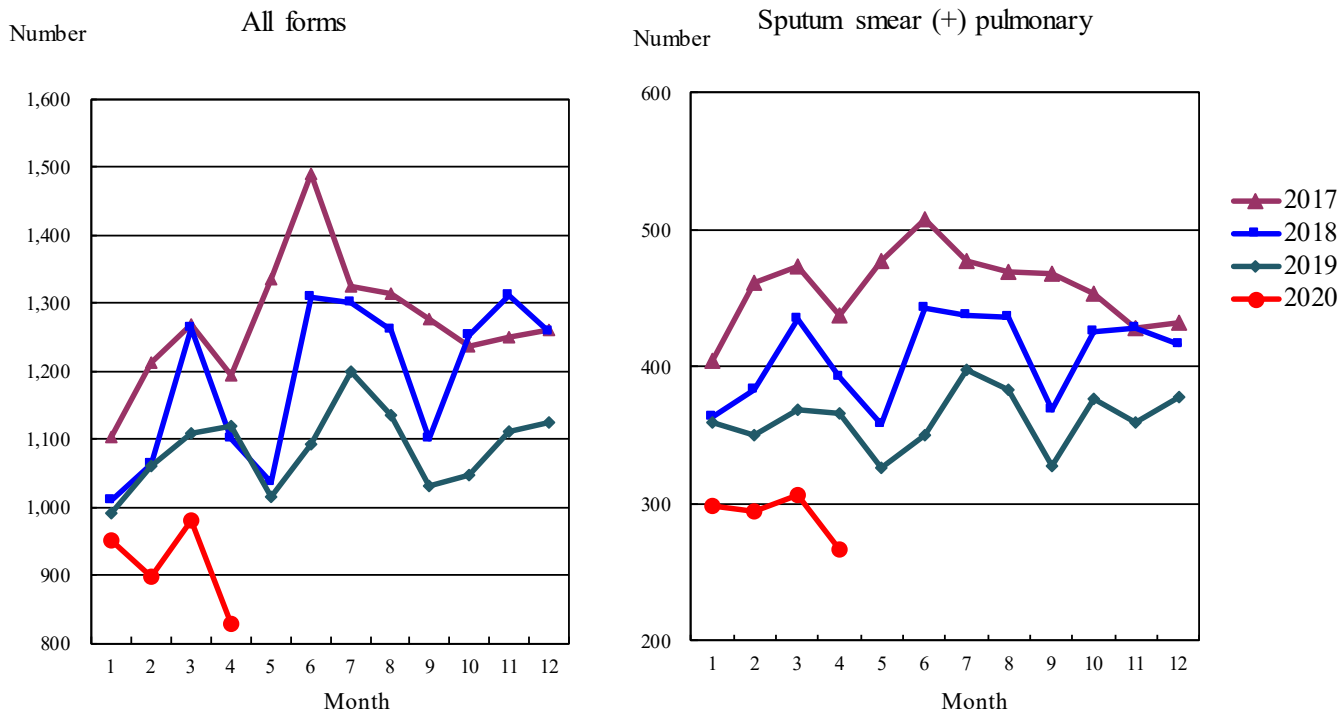


Figure 2. Newly notified TB patients by sex and age, Japan, summation (Jan.-Apr.) 2020

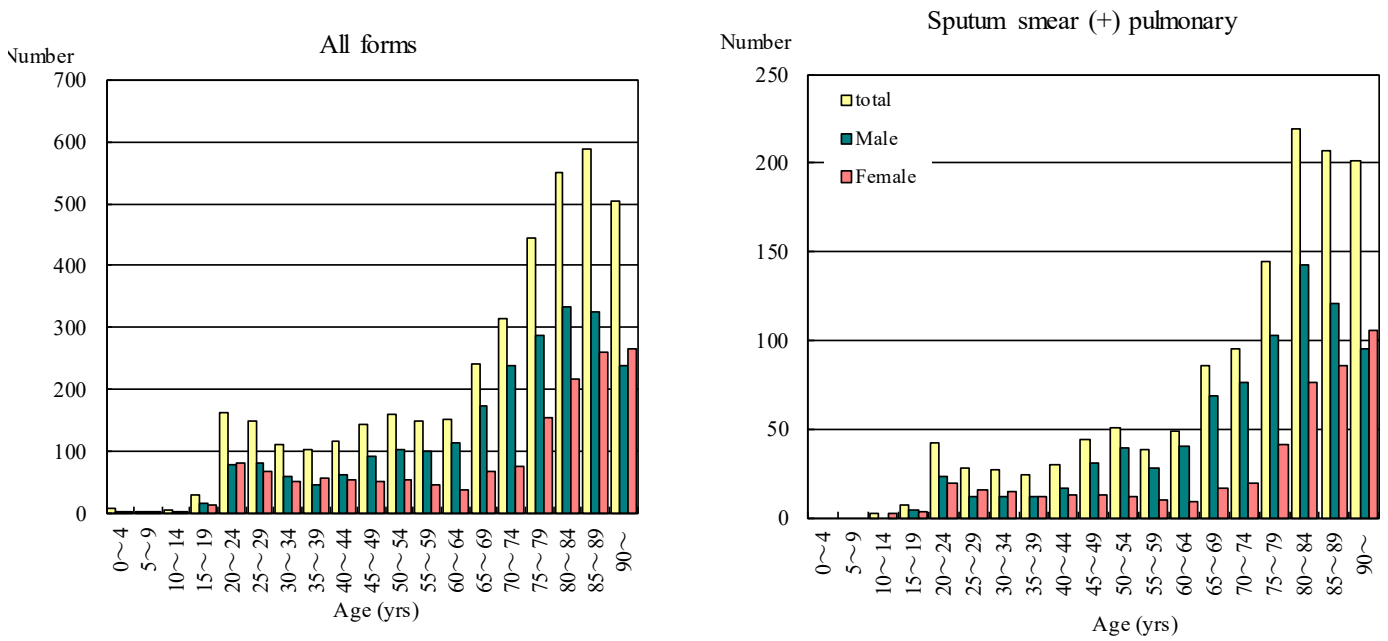


Figure 3. Notification rate of TB cases by sex and age, Japan, summation (Jan.-Apr.) 2020

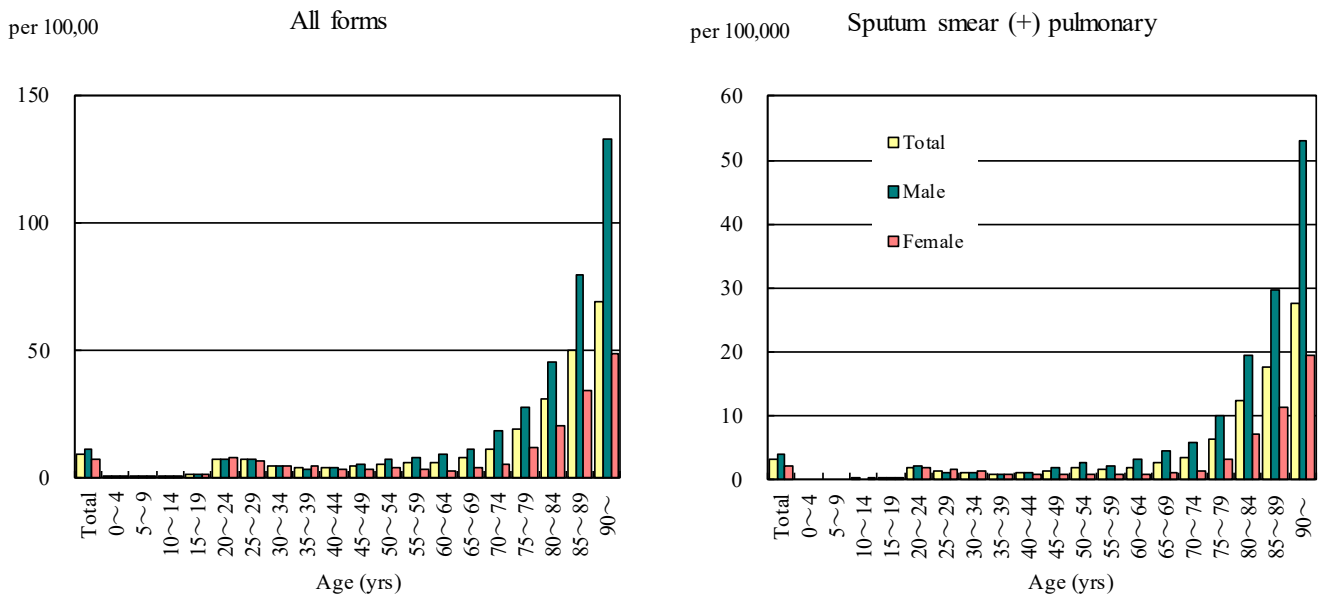


Figure 4. Notification rates of TB by prefecture, Japan, summation (Jan.-Apr.) 2020

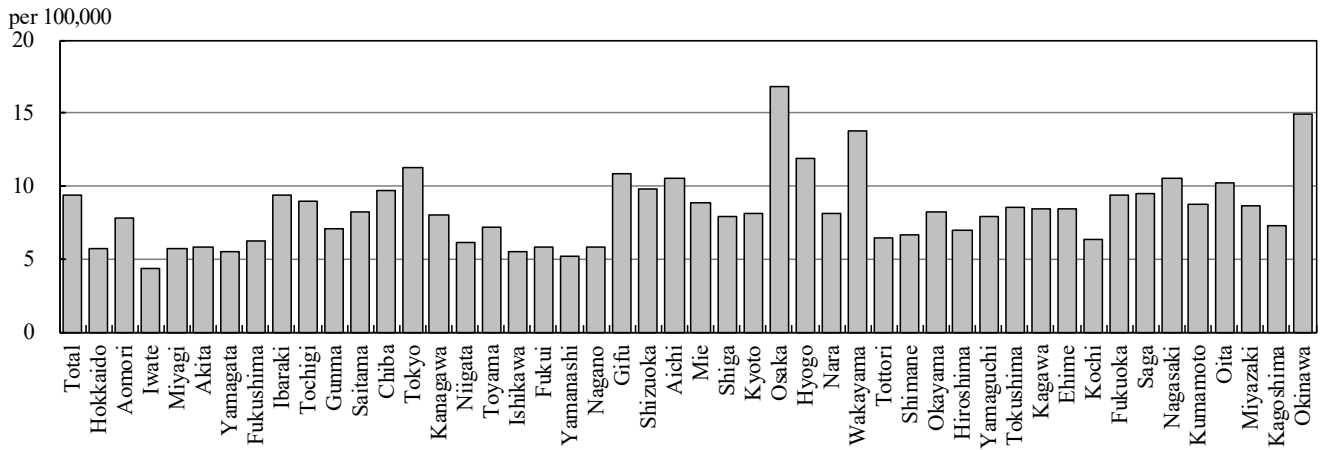


Figure 5. Notification rates of TB major city, Japan, summation (Jan.-Apr.) 2020

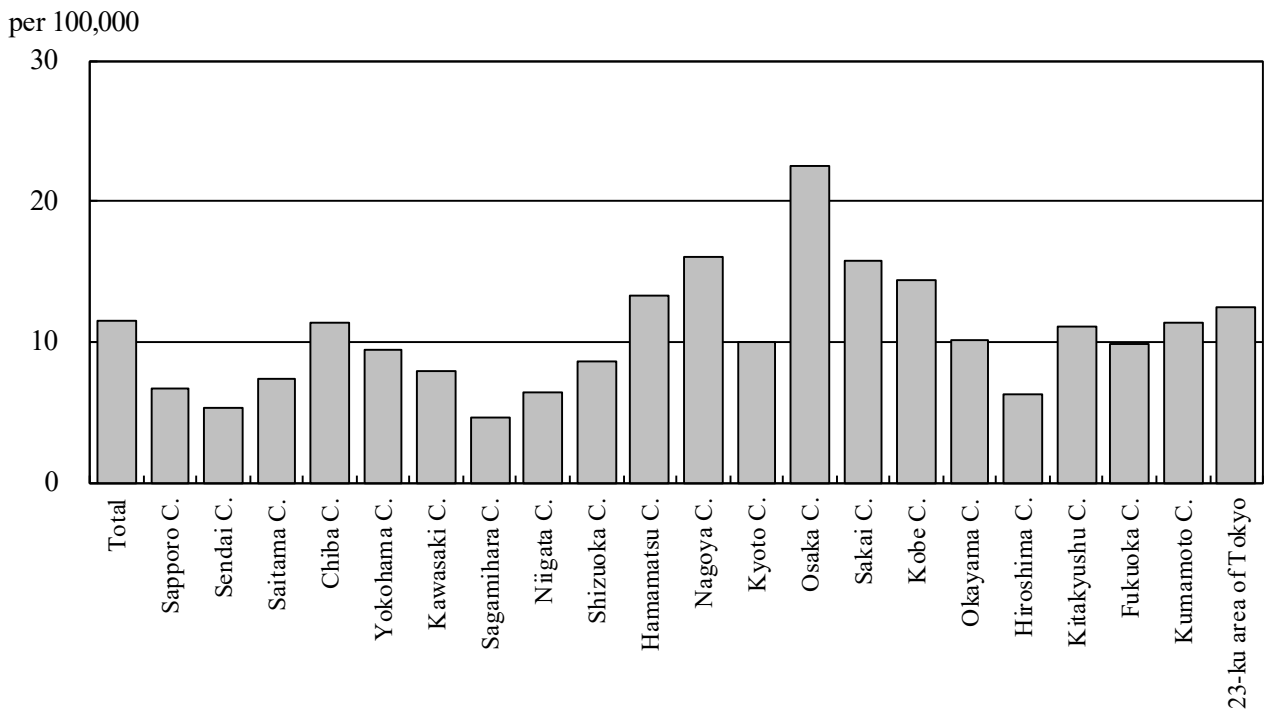


Figure 6. Number of LTBI, Japan, 2017-2020

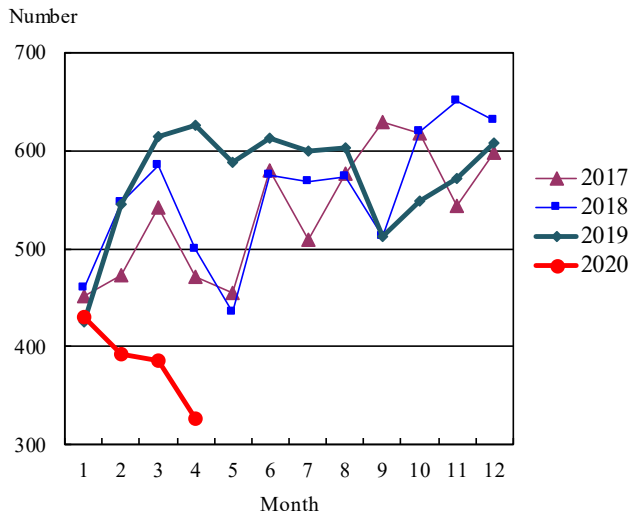


Figure 7. Number of LTBI by sex and age group, Japan, summation (Jan.-Apr.) 2020

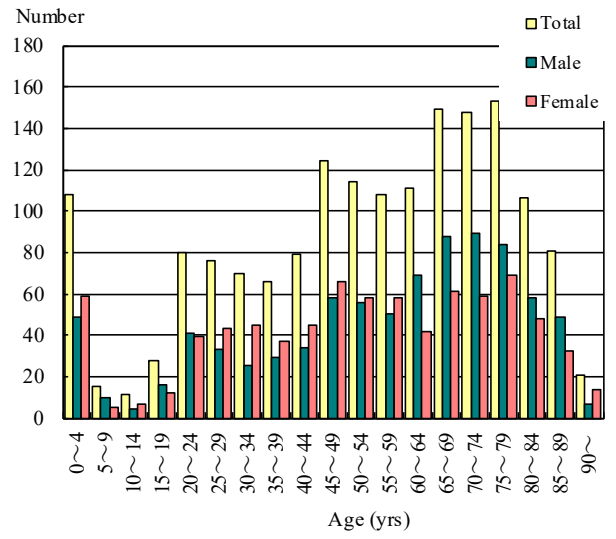


Table 1. Newly notified TB cases and rates by sex and age, Japan, 2020

	Apr.			Summation (Jan.-Apr.)			Notification rate (per 100,000)		
	Total	Male	Female	Total	Male	Female	Total	Male	Female
Total	827	488	339	3,944	2,371	1,573	9.4	11.6	7.3
0~4	1	0	1	8	4	4	0.5	0.5	0.5
5~9	2	2	0	3	2	1	0.2	0.2	0.1
10~14	2	1	1	5	2	3	0.3	0.2	0.3
15~19	11	4	7	31	17	14	1.6	1.7	1.5
20~24	30	12	18	162	79	83	7.7	7.3	8.1
25~29	38	20	18	150	82	68	7.2	7.7	6.7
30~34	22	12	10	112	60	52	4.8	5.1	4.6
35~39	23	12	11	105	47	58	4.1	3.6	4.6
40~44	15	9	6	117	63	54	3.9	4.1	3.6
45~49	23	14	9	144	93	51	4.5	5.7	3.2
50~54	33	21	12	160	105	55	5.7	7.5	4.0
55~59	36	26	10	149	102	47	5.8	8.0	3.7
60~64	33	27	6	153	115	38	6.0	9.2	3.0
65~69	44	30	14	242	174	68	7.7	11.5	4.2
70~74	72	50	22	316	240	76	11.5	18.6	5.2
75~79	83	51	32	445	289	156	19.3	28.0	12.2
80~84	108	67	41	551	333	218	30.9	45.5	20.7
85~89	132	70	62	587	326	261	50.1	79.8	34.2
90~	119	60	59	504	238	266	69.3	132.9	48.5

Temporary registrants = 67, Total of registrants and temporary registrants = 894

Rate: summation / (population*12/12)*100,000

Population: as of 1st Oct. 2018

Table 2. Newly notified sputum smear positive pulmonary TB cases and rates by sex and age, Japan, 2020

	Apr.			Summation (Jan.-Apr.)			Notification rate (per 100,000)		
	Total	Male	Female	Total	Male	Female	Total	Male	Female
Total	267	163	104	1,294	825	469	3.1	4.0	2.2
0~4	0	0	0	0	0	0	0.0	0.0	0.0
5~9	0	0	0	0	0	0	0.0	0.0	0.0
10~14	1	0	1	2	0	2	0.1	0.0	0.2
15~19	1	0	1	7	4	3	0.4	0.4	0.3
20~24	5	3	2	42	23	19	2.0	2.1	1.9
25~29	8	4	4	28	12	16	1.3	1.1	1.6
30~34	6	3	3	27	12	15	1.2	1.0	1.3
35~39	7	5	2	24	12	12	0.9	0.9	0.9
40~44	3	3	0	30	17	13	1.0	1.1	0.9
45~49	6	4	2	44	31	13	1.4	1.9	0.8
50~54	12	9	3	51	39	12	1.8	2.8	0.9
55~59	6	4	2	38	28	10	1.5	2.2	0.8
60~64	13	11	2	49	40	9	1.9	3.2	0.7
65~69	16	12	4	86	69	17	2.8	4.6	1.1
70~74	18	15	3	95	76	19	3.5	5.9	1.3
75~79	20	11	9	144	103	41	6.2	10.0	3.2
80~84	42	26	16	219	143	76	12.3	19.6	7.2
85~89	52	31	21	207	121	86	17.7	29.6	11.3
90~	51	22	29	201	95	106	27.6	53.1	19.3

Rate: summation / (population*12/12)*100,000

Population: as of 1st Oct. 2018

Table 3. Newly notified TB cases and rates by prefecture, Japan, 2020

	Apr.		Summation (Jan.-Apr.)		Notification rate (per 100,000)	
	Newly notified TB	Sputum smear (+)	Newly notified TB	Sputum smear (+)	Newly notified TB	Sputum smear (+)
Total	827	267	3,944	1,294	9.4	3.1
Hokkaido	28	4	101	26	5.7	1.5
Aomori	12	3	33	12	7.8	2.9
Iwate	2	0	18	9	4.4	2.2
Miyagi	12	8	44	17	5.7	2.2
Akita	2	0	19	6	5.8	1.8
Yamagata	6	3	20	9	5.5	2.5
Fukushima	9	2	39	10	6.3	1.6
Ibaraki	15	4	90	22	9.4	2.3
Tochigi	9	3	58	16	8.9	2.5
Gunma	5	1	46	13	7.1	2.0
Saitama	48	13	200	53	8.2	2.2
Chiba	37	11	202	75	9.7	3.6
Tokyo	114	32	517	168	11.2	3.6
Kanagawa	43	17	244	88	8.0	2.9
Niigata	9	1	46	11	6.1	1.5
Toyama	3	1	25	6	7.1	1.7
Ishikawa	6	2	21	8	5.5	2.1
Fukui	3	1	15	6	5.8	2.3
Yamanashi	5	1	14	3	5.1	1.1
Nagano	9	3	40	10	5.8	1.5
Gifu	13	4	72	20	10.8	3.0
Shizuoka	22	4	120	32	9.8	2.6
Aichi	55	16	265	89	10.5	3.5
Mie	16	6	53	13	8.9	2.2
Shiga	4	3	37	19	7.9	4.0
Kyoto	19	5	70	23	8.1	2.7
Osaka	96	37	493	181	16.8	6.2
Hyogo	53	25	218	77	11.9	4.2
Nara	12	4	36	9	8.1	2.0
Wakayama	5	2	43	18	13.8	5.8
Tottori	5	2	12	4	6.4	2.1
Shimane	2	1	15	6	6.6	2.6
Okayama	13	5	52	13	8.2	2.1
Hiroshima	13	2	65	23	6.9	2.4
Yamaguchi	9	3	36	12	7.9	2.6
Tokushima	1	0	21	7	8.6	2.9
Kagawa	3	3	27	8	8.4	2.5
Ehime	12	4	38	16	8.4	3.6
Kochi	1	0	15	6	6.4	2.5
Fukuoka	36	12	159	55	9.3	3.2
Saga	3	0	26	8	9.5	2.9
Nagasaki	13	4	47	12	10.5	2.7
Kumamoto	7	4	51	15	8.7	2.6
Oita	11	5	39	19	10.2	5.0
Miyazaki	8	2	31	13	8.6	3.6
Kagoshima	9	2	39	7	7.2	1.3
Okinawa	9	2	72	21	14.9	4.4

Rate: summation / (population*12/12)*100,000

Population: as of 1st Oct. 2018

Table 4. Newly notified TB cases and rates by major city, Japan, 2020

	Apr.		Summation (Jan.-Apr.)		Notification Rate (per 100,000)	
	Newly notified TB	Sputum Smear(+)	Newly notified TB	Sputum Smear(+)	Newly notified TB	Sputum Smear(+)
Total	295	104	1,427	500	11.5	4.0
Sapporo City	15	1	44	5	6.7	0.8
Sendai City	3	3	19	6	5.2	1.7
Saitama City	6	3	32	13	7.4	3.0
Chiba City	6	3	37	19	11.4	5.8
Yokohama City	22	10	118	42	9.5	3.4
Kawasaki City	7	3	40	12	7.9	2.4
Sagamihara City	2	0	11	6	4.6	2.5
Niigata City	4	0	17	6	6.4	2.2
Shizuoka City	0	0	20	8	8.5	3.4
Hamamatsu City	7	3	35	10	13.2	3.8
Nagoya City	26	9	124	49	16.0	6.3
Kyoto City	15	5	49	18	10.0	3.7
Osaka City	34	11	204	76	22.5	8.4
Sakai City	9	6	44	20	15.8	7.2
Kobe City	18	11	73	29	14.3	5.7
Okayama City	6	2	24	5	10.1	2.1
Hiroshima City	5	1	25	13	6.3	3.3
Kitakyushu City	11	3	35	10	11.1	3.2
Fukuoka City	11	4	52	19	9.9	3.6
Kumamoto City	3	0	28	5	11.4	2.0
23-ku area of Tokyo	85	26	396	129	12.4	4.1

Rate: summation / (population*12/12)*100,000

Population: as of 1st Oct. 2018

Major city: city with a population of one million or more.

Table 4 is a re-count of Table 3.

Table 5. LTBI cases and rates by sex and age, Japan, 2020

	Apr.			Summation (Jan.-Apr.)			(Ratio) LTBI/Newly notified cases		
	Total	Male	Female	Total	Male	Female	Total	Male	Female
Total	326	160	166	1,648	849	799	0.4	0.4	0.5
0~4	18	6	12	108	49	59	13.5	12.3	14.8
5~9	4	2	2	15	10	5	5.0	5.0	5.0
10~14	3	1	2	11	4	7	2.2	2.0	2.3
15~19	7	6	1	28	16	12	0.9	0.9	0.9
20~24	14	8	6	80	41	39	0.5	0.5	0.5
25~29	18	5	13	76	33	43	0.5	0.4	0.6
30~34	16	5	11	70	25	45	0.6	0.4	0.9
35~39	13	7	6	66	29	37	0.6	0.6	0.6
40~44	15	7	8	79	34	45	0.7	0.5	0.8
45~49	22	10	12	124	58	66	0.9	0.6	1.3
50~54	27	15	12	114	56	58	0.7	0.5	1.1
55~59	21	10	11	108	50	58	0.7	0.5	1.2
60~64	19	10	9	111	69	42	0.7	0.6	1.1
65~69	31	20	11	149	88	61	0.6	0.5	0.9
70~74	28	16	12	148	89	59	0.5	0.4	0.8
75~79	35	17	18	153	84	69	0.3	0.3	0.4
80~84	21	10	11	106	58	48	0.2	0.2	0.2
85~89	9	3	6	81	49	32	0.1	0.2	0.1
90~	5	2	3	21	7	14	0.0	0.0	0.1

LTBI: latent TB Infection

Number of LTBI is not included in the newly notified TB patients

Table 6. LTBI cases and rates by prefecture, Japan, 2020

	Apr.	Summation (Jan.-Apr.)	
	LTBI	LTBI	(Ratio) LTBI / new TB
Total	326	1,648	0.42
Hokkaido	7	45	0.45
Aomori	3	25	0.76
Iwate	2	11	0.61
Miyagi	6	34	0.77
Akita	1	9	0.47
Yamagata	1	9	0.45
Fukushima	1	24	0.62
Ibaraki	6	42	0.47
Tochigi	4	14	0.24
Gunma	4	14	0.30
Saitama	17	99	0.50
Chiba	10	71	0.35
Tokyo	49	226	0.44
Kanagawa	29	93	0.38
Niigata	5	14	0.30
Toyama	1	12	0.48
Ishikawa	2	5	0.24
Fukui	0	3	0.20
Yamanashi	0	8	0.57
Nagano	1	9	0.23
Gifu	2	24	0.33
Shizuoka	2	30	0.25
Aichi	21	98	0.37
Mie	5	15	0.28
Shiga	7	17	0.46
Kyoto	11	40	0.57
Osaka	29	196	0.40
Hyogo	17	77	0.35
Nara	2	23	0.64
Wakayama	3	8	0.19
Tottori	2	2	0.17
Shimane	6	10	0.67
Okayama	8	33	0.63
Hiroshima	8	38	0.58
Yamaguchi	3	16	0.44
Tokushima	1	6	0.29
Kagawa	1	9	0.33
Ehime	2	7	0.18
Kochi	1	3	0.20
Fukuoka	19	102	0.64
Saga	2	4	0.15
Nagasaki	1	14	0.30
Kumamoto	8	22	0.43
Oita	1	14	0.36
Miyazaki	2	6	0.19
Kagoshima	3	17	0.44
Okinawa	10	50	0.69

LTBI: Latent TB Infection

Number of LTBI is not included in the newly notified TB patients.

Table 7. LTBI cases and rates by major city, Japan, 2020

	Apr.	Summation (Jan.-Apr.)	
	LTBI	LTBI	(Ratio) LTBI / new TB
Total	108	595	0.42
Sapporo City	2	16	0.36
Sendai City	0	10	0.53
Saitama City	2	7	0.22
Chiba City	3	17	0.46
Yokohama City	8	22	0.19
Kawasaki City	10	34	0.85
Sagamihara City	0	9	0.82
Niigata City	3	6	0.35
Shizuoka City	0	3	0.15
Hamamatsu City	0	6	0.17
Nagoya City	4	35	0.28
Kyoto City	7	27	0.55
Osaka City	9	95	0.47
Sakai City	5	24	0.55
Kobe City	6	27	0.37
Okayama City	7	20	0.83
Hiroshima City	3	15	0.60
Kitakyushu City	3	14	0.40
Fukuoka City	6	42	0.81
Kumamoto City	2	9	0.32
23-ku area of Tokyo	28	157	0.40

LTBI: Latent TB Infection

Number of LTBI is not included in the newly notified TB patients,

Major city: city with a population of one million or more

Table 7 is a re-count of Table 6