



Monthly Report of Tuberculosis Surveillance, Japan – July, 2020

The reporting and recording of tuberculosis (TB) and Latent TB Infection (LTBI) are managed at public health centers (PHCs) by the nationwide computerized TB surveillance system in Japan. A monthly report is compiled from the database automatically and regularly on 4th Friday of the next month, and an annual report is also produced much like the monthly report, but with sufficient time for data correction.

Tables and figures shown in the monthly reports are as follows.

Figures

Figure 1. Number of newly notified TB cases by month, Japan, 2017-2020

Figure 2. Newly notified TB cases by sex and age, Japan, summation (Jan. - Jul.) 2020

Figure 3. Notification rate of TB cases by sex and age, Japan, summation (Jan. - Jul.) 2020

Figure 4. Notification rate of TB by prefecture, Japan, summation (Jan. - Jul.) 2020

Figure 5. Notification rate of TB by major city, Japan, summation (Jan. - Jul.) 2020

Figure 6. Number of LTBI, Japan, 2020

Figure 7. Number of LTBI by sex and age group, Japan, summation (Jan. - Jul.) 2017-2020

Tables

Table 1. Newly notified TB cases and rates by sex and age, Japan, 2020

Table 2. Newly notified sputum smear positive pulmonary TB cases and rates by sex and age, Japan, 2020

Table 3. Newly notified TB cases and rates by prefecture, Japan, 2020

Table 4. Newly notified TB cases and rates by major city, Japan, 2020

Table 5. LTBI cases and rates by sex and age, Japan, 2020

Table 6. LTBI cases and rates by prefecture, Japan, 2020

Table 7. LTBI cases and rates by major city, Japan, 2020

Figure 1. Number of newly notified TB cases by month, Japan, 2017-2020

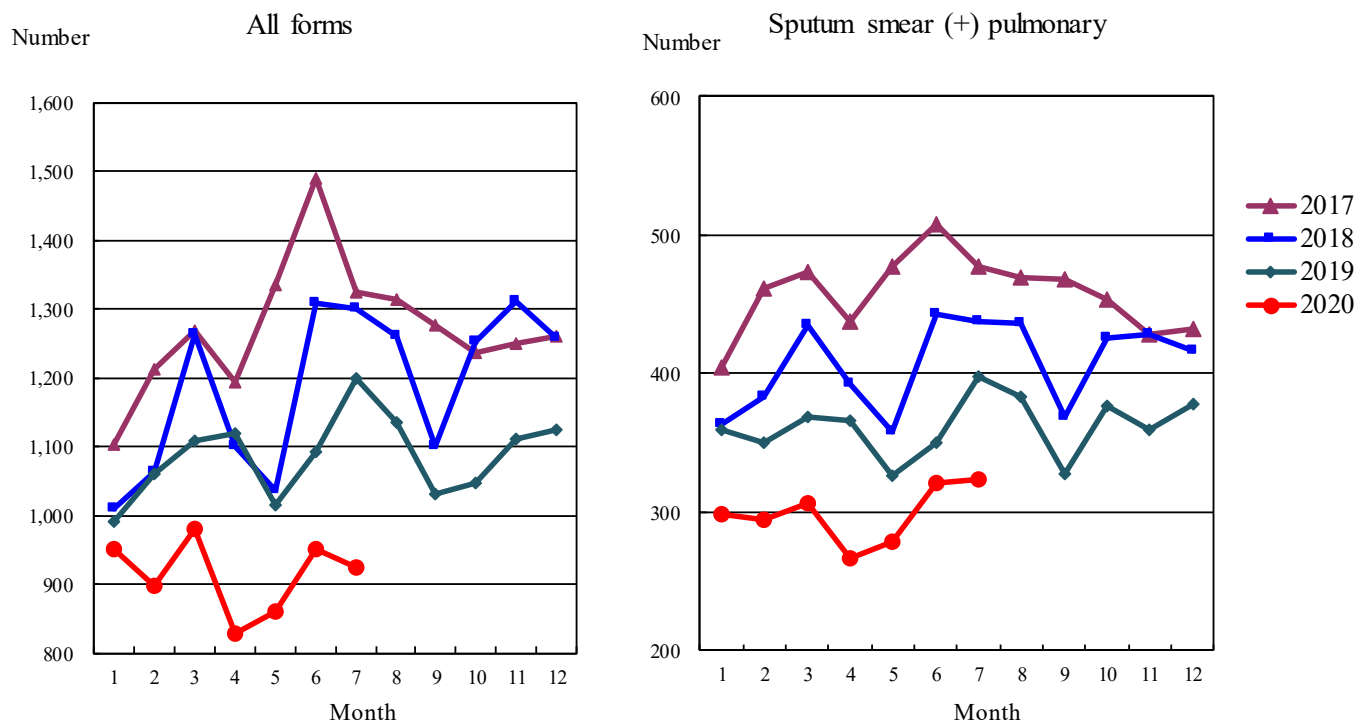


Figure 2. Newly notified TB patients by sex and age, Japan, summation (Jan.-Jul.) 2020

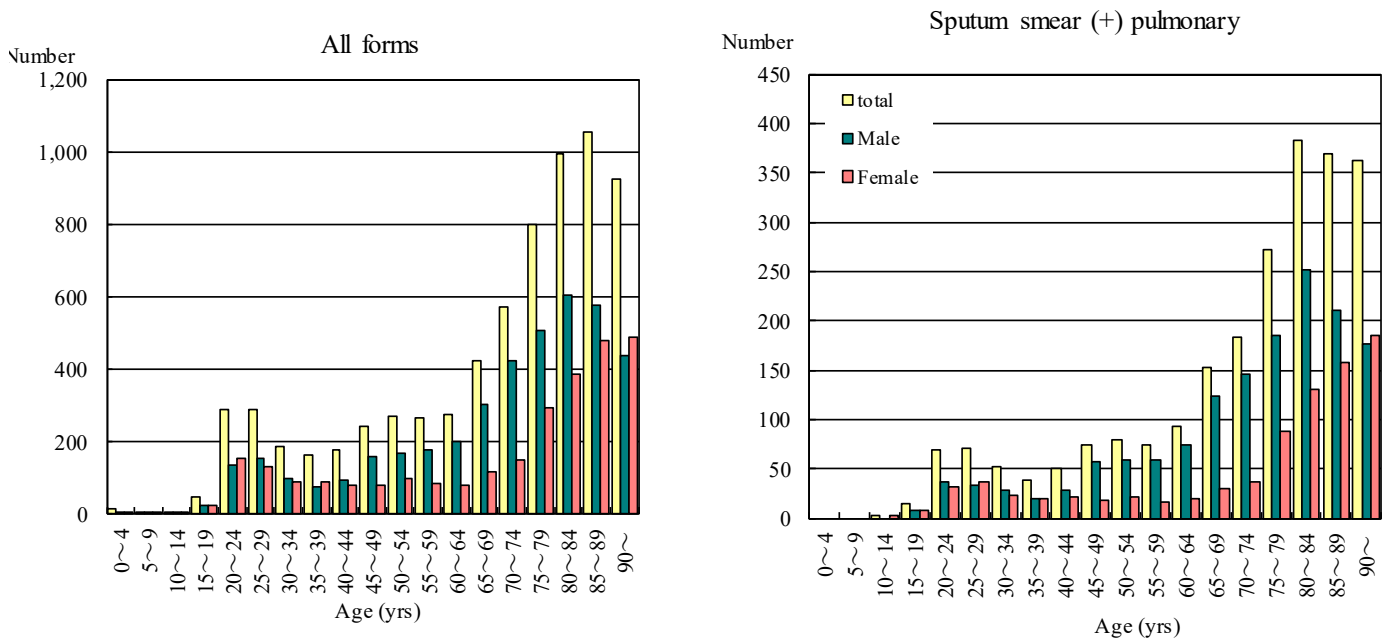


Figure 3. Notification rate of TB cases by sex and age, Japan, summation (Jan.-Jul.) 2020

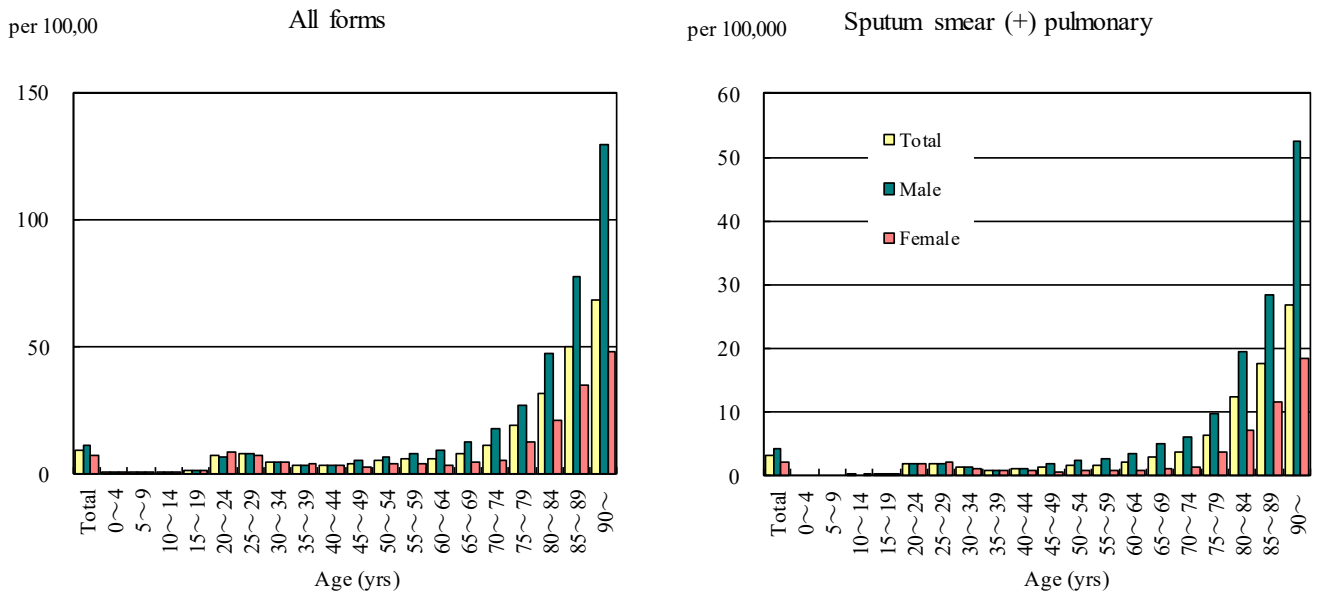


Figure 4. Notification rates of TB by prefecture, Japan, summation (Jan.-Jul.) 2020

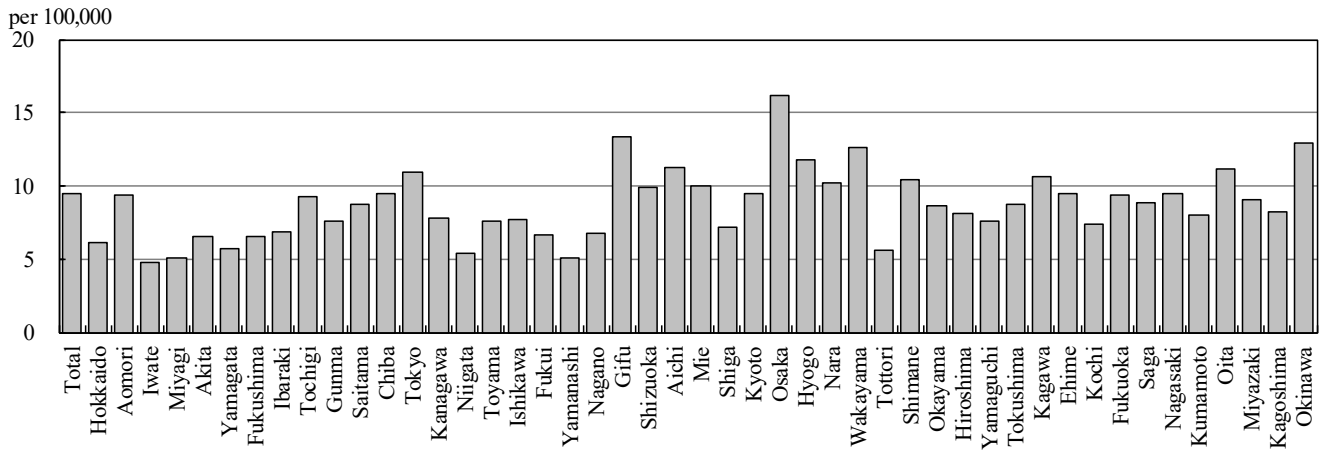


Figure 5. Notification rates of TB major city, Japan, summation (Jan.-Jul.) 2020

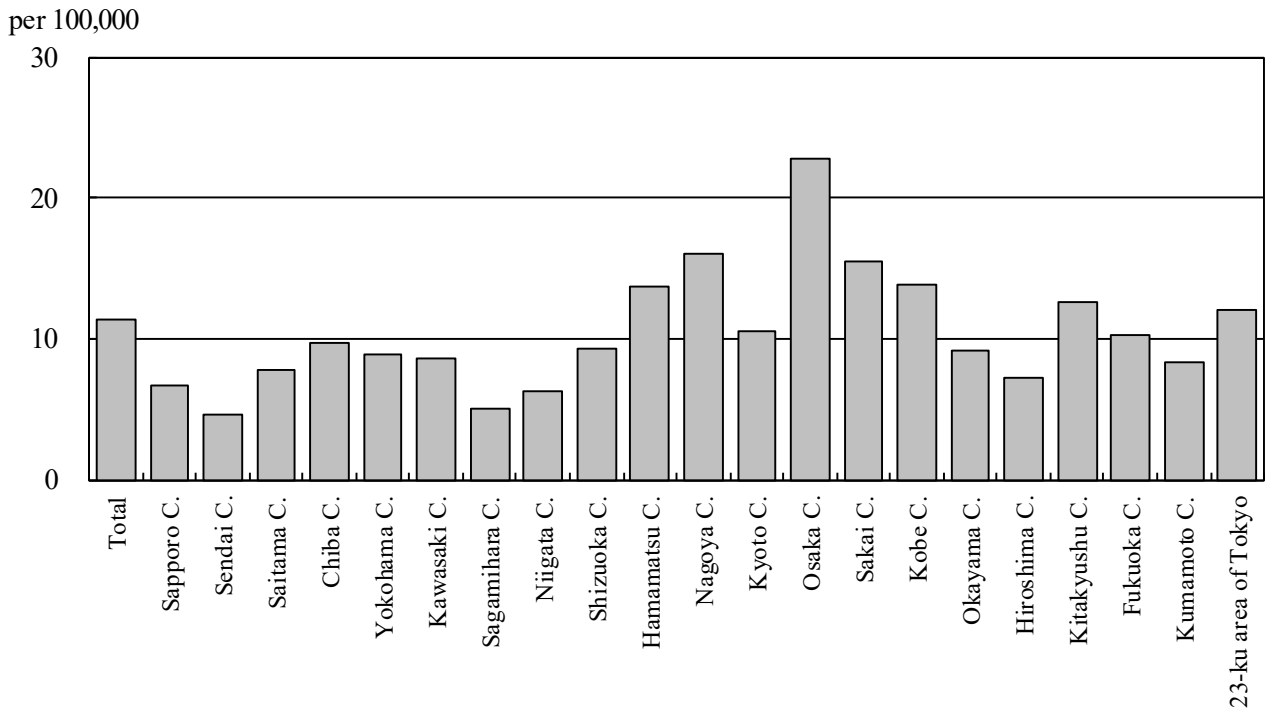


Figure 6. Number of LTBI, Japan, 2017-2020

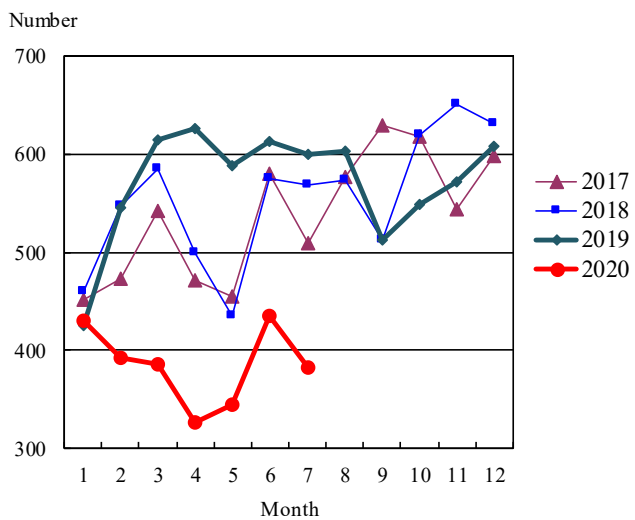


Figure 7. Number of LTBI by sex and age group, Japan, summation (Jan.-Jul.) 2020

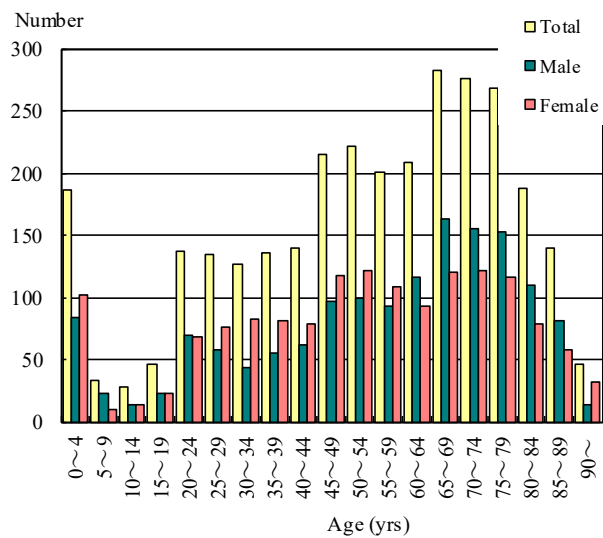


Table 1. Newly notified TB cases and rates by sex and age, Japan, 2020

	Jul.			Summation (Jan.-Jul.)			Notification rate (per 100,000)		
	Total	Male	Female	Total	Male	Female	Total	Male	Female
Total	924	530	394	6,996	4,166	2,830	9.5	11.6	7.5
0~4	1	1	0	13	8	5	0.5	0.6	0.4
5~9	1	1	0	4	3	1	0.1	0.2	0.1
10~14	1	0	1	8	4	4	0.3	0.3	0.3
15~19	6	3	3	50	25	25	1.5	1.4	1.5
20~24	43	17	26	288	135	153	7.7	7.0	8.5
25~29	49	24	25	288	156	132	7.9	8.3	7.5
30~34	26	13	13	187	99	88	4.7	4.9	4.6
35~39	16	8	8	164	76	88	3.7	3.4	4.1
40~44	19	10	9	176	96	80	3.5	3.7	3.2
45~49	36	20	16	242	161	81	4.2	5.6	2.9
50~54	31	18	13	269	169	100	5.4	6.7	4.0
55~59	35	24	11	265	179	86	5.9	8.0	3.8
60~64	50	34	16	277	199	78	6.3	9.2	3.5
65~69	40	34	6	423	305	118	8.3	12.4	4.5
70~74	88	69	19	572	424	148	11.3	17.7	5.5
75~79	102	58	44	801	509	292	19.0	26.9	12.5
80~84	130	75	55	992	606	386	31.9	47.3	21.1
85~89	151	72	79	1,054	576	478	50.0	77.5	35.0
90~	99	49	50	923	436	487	68.5	129.4	48.2

Temporary registrants = 52, Total of registrants and temporary registrants = 976

Rate: summation / (population*6/12)*100,000

Population: as of 1st Oct. 2019

Table 2. Newly notified sputum smear positive pulmonary TB cases and rates by sex and age, Japan, 2020

	Jul.			Summation (Jan.-Jul.)			Notification rate (per 100,000)		
	Total	Male	Female	Total	Male	Female	Total	Male	Female
Total	323	203	120	2,341	1,497	844	3.2	4.2	2.2
0~4	0	0	0	0	0	0	0.0	0.0	0.0
5~9	0	0	0	0	0	0	0.0	0.0	0.0
10~14	0	0	0	2	0	2	0.1	0.0	0.1
15~19	2	1	1	14	7	7	0.4	0.4	0.4
20~24	8	5	3	69	37	32	1.9	1.9	1.8
25~29	15	6	9	71	34	37	2.0	1.8	2.1
30~34	9	6	3	52	29	23	1.3	1.4	1.2
35~39	6	3	3	39	20	19	0.9	0.9	0.9
40~44	8	3	5	50	28	22	1.0	1.1	0.9
45~49	8	4	4	75	57	18	1.3	2.0	0.6
50~54	6	5	1	80	59	21	1.6	2.3	0.8
55~59	12	10	2	75	59	16	1.7	2.6	0.7
60~64	12	10	2	93	74	19	2.1	3.4	0.9
65~69	18	16	2	153	123	30	3.0	5.0	1.1
70~74	27	22	5	183	146	37	3.6	6.1	1.4
75~79	40	26	14	272	185	87	6.4	9.8	3.7
80~84	58	36	22	382	251	131	12.3	19.6	7.2
85~89	54	26	28	369	211	158	17.5	28.4	11.6
90~	40	24	16	362	177	185	26.9	52.5	18.3

Rate: summation / (population*6/12)*100,000

Population: as of 1st Oct. 2019

Table 3. Newly notified TB cases and rates by prefecture, Japan, 2020

	Jul.		Summation (Jan.-Jul.)		Notification rate (per 100,000)	
	Newly notified TB	Sputum smear (+)	Newly notified TB	Sputum smear (+)	Newly notified TB	Sputum smear (+)
Total	924	323	6,996	2,341	9.5	3.2
Hokkaido	30	12	188	66	6.1	2.2
Aomori	10	5	68	33	9.4	4.5
Iwate	3	1	34	13	4.8	1.8
Miyagi	8	4	69	32	5.1	2.4
Akita	5	0	37	13	6.6	2.3
Yamagata	4	2	36	16	5.7	2.5
Fukushima	13	4	70	18	6.5	1.7
Ibaraki	10	1	114	22	6.8	1.3
Tochigi	13	3	104	36	9.2	3.2
Gunma	10	3	86	29	7.6	2.6
Saitama	59	17	373	110	8.7	2.6
Chiba	41	13	345	118	9.4	3.2
Tokyo	127	41	887	304	10.9	3.7
Kanagawa	50	18	418	153	7.8	2.9
Niigata	9	3	70	18	5.4	1.4
Toyama	9	4	46	15	7.6	2.5
Ishikawa	5	1	51	12	7.7	1.8
Fukui	6	1	30	8	6.7	1.8
Yamanashi	4	1	24	5	5.1	1.1
Nagano	9	5	81	26	6.8	2.2
Gifu	21	9	155	42	13.4	3.6
Shizuoka	28	9	211	60	9.9	2.8
Aichi	47	22	495	165	11.2	3.7
Mie	17	3	104	26	10.0	2.5
Shiga	5	3	59	25	7.2	3.0
Kyoto	16	9	142	52	9.4	3.5
Osaka	118	43	834	304	16.2	5.9
Hyogo	54	20	377	134	11.8	4.2
Nara	14	6	79	24	10.2	3.1
Wakayama	5	3	68	32	12.6	5.9
Tottori	1	1	18	7	5.6	2.2
Shimane	5	1	41	16	10.4	4.1
Okayama	14	4	95	26	8.6	2.4
Hiroshima	19	7	133	47	8.1	2.9
Yamaguchi	5	2	60	17	7.6	2.1
Tokushima	3	2	37	13	8.7	3.1
Kagawa	8	2	59	18	10.6	3.2
Ehime	11	4	74	29	9.5	3.7
Kochi	4	2	30	11	7.4	2.7
Fukuoka	47	14	279	87	9.4	2.9
Saga	4	3	42	15	8.8	3.2
Nagasaki	5	1	73	18	9.4	2.3
Kumamoto	11	4	82	24	8.0	2.4
Oita	17	4	74	31	11.2	4.7
Miyazaki	1	0	57	20	9.1	3.2
Kagoshima	12	4	77	17	8.2	1.8
Okinawa	7	2	110	34	13.0	4.0

Rate: summation / (population*6/12)*100,000

Population: as of 1st Oct. 2019

Table 4. Newly notified TB cases and rates by major city, Japan, 2020

	Jul.		Summation (Jan.-Jul.)		Notification Rate (per 100,000)	
	Newly notified TB	Sputum Smear(+)	Newly notified TB	Sputum Smear(+)	Newly notified TB	Sputum Smear(+)
Total	372	137	2,481	877	11.4	4.0
Sapporo City	17	6	77	20	6.7	1.7
Sendai City	3	2	29	14	4.6	2.2
Saitama City	15	2	60	19	7.8	2.5
Chiba City	9	3	55	27	9.6	4.7
Yokohama City	21	6	193	65	8.8	3.0
Kawasaki City	10	7	77	32	8.6	3.6
Sagamihara City	2	0	21	10	5.0	2.4
Niigata City	4	1	29	9	6.2	1.9
Shizuoka City	10	3	38	15	9.3	3.7
Hamamatsu City	8	4	63	21	13.6	4.5
Nagoya City	27	15	218	81	16.1	6.0
Kyoto City	10	6	90	35	10.5	4.1
Osaka City	56	30	364	138	22.8	8.6
Sakai City	14	3	75	31	15.5	6.4
Kobe City	21	7	123	45	13.8	5.1
Okayama City	6	2	38	8	9.2	1.9
Hiroshima City	8	2	51	19	7.3	2.7
Kitakyushu City	13	3	69	18	12.6	3.3
Fukuoka City	17	5	95	31	10.2	3.3
Kumamoto City	5	3	36	9	8.3	2.1
23-ku area of Tokyo	96	27	680	230	12.1	4.1

Rate: summation / (population*6/12)*100,000

Population: as of 1st Oct. 2019

Major city: city with a population of one million or more.

Table 4 is a re-count of Table 3.

Table 5. LTBI cases and rates by sex and age, Japan, 2020

	Jul.			Summation (Jan.-Jul.)			(Ratio) LTBI/Newly notified cases		
	Total	Male	Female	Total	Male	Female	Total	Male	Female
Total	383	185	198	3,012	1,513	1,499	0.4	0.4	0.5
0~4	18	11	7	186	84	102	14.3	10.5	20.4
5~9	8	6	2	33	23	10	8.3	7.7	10.0
10~14	2	2	0	28	14	14	3.5	3.5	3.5
15~19	4	1	3	46	23	23	0.9	0.9	0.9
20~24	19	13	6	137	69	68	0.5	0.5	0.4
25~29	13	8	5	134	58	76	0.5	0.4	0.6
30~34	13	4	9	126	44	82	0.7	0.4	0.9
35~39	22	6	16	136	55	81	0.8	0.7	0.9
40~44	14	5	9	140	62	78	0.8	0.6	1.0
45~49	28	12	16	215	97	118	0.9	0.6	1.5
50~54	26	9	17	221	100	121	0.8	0.6	1.2
55~59	22	10	12	201	93	108	0.8	0.5	1.3
60~64	27	12	15	209	116	93	0.8	0.6	1.2
65~69	40	22	18	283	163	120	0.7	0.5	1.0
70~74	45	23	22	276	155	121	0.5	0.4	0.8
75~79	36	24	12	268	152	116	0.3	0.3	0.4
80~84	28	12	16	188	110	78	0.2	0.2	0.2
85~89	10	5	5	139	81	58	0.1	0.1	0.1
90~	8	0	8	46	14	32	0.0	0.0	0.1

LTBI: latent TB Infection

Number of LTBI is not included in the newly notified TB patients

Table 6. LTBI cases and rates by prefecture, Japan, 2020

	Jul.	Summation (Jan.-Jul.)	
	LTBI	LTBI	(Ratio) LTBI / new TB
Total	383	3,012	0.43
Hokkaido	21	89	0.47
Aomori	3	45	0.66
Iwate	1	22	0.65
Miyagi	6	60	0.87
Akita	5	17	0.46
Yamagata	0	13	0.36
Fukushima	1	38	0.54
Ibaraki	19	81	0.71
Tochigi	2	23	0.22
Gunma	3	29	0.34
Saitama	25	167	0.45
Chiba	25	145	0.42
Tokyo	67	425	0.48
Kanagawa	20	173	0.41
Niigata	2	34	0.49
Toyama	2	19	0.41
Ishikawa	2	18	0.35
Fukui	0	2	0.07
Yamanashi	0	13	0.54
Nagano	3	35	0.43
Gifu	4	44	0.28
Shizuoka	9	63	0.30
Aichi	10	184	0.37
Mie	0	19	0.18
Shiga	0	27	0.46
Kyoto	7	78	0.55
Osaka	39	350	0.42
Hyogo	20	133	0.35
Nara	4	38	0.48
Wakayama	5	18	0.26
Tottori	0	3	0.17
Shimane	3	22	0.54
Okayama	16	63	0.66
Hiroshima	7	62	0.47
Yamaguchi	2	24	0.40
Tokushima	1	10	0.27
Kagawa	4	21	0.36
Ehime	1	11	0.15
Kochi	0	6	0.20
Fukuoka	13	131	0.47
Saga	4	14	0.33
Nagasaki	1	21	0.29
Kumamoto	8	43	0.52
Oita	4	32	0.43
Miyazaki	6	32	0.56
Kagoshima	2	32	0.42
Okinawa	6	83	0.75

LTBI: Latent TB Infection

Number of LTBI is not included in the newly notified TB patients.

Table 7. LTBI cases and rates by major city, Japan, 2020

	Jul.	Summation (Jan.-Jul.)	
	LTBI	LTBI	(Ratio) LTBI / new TB
Total	161	1,082	0.44
Sapporo City	7	35	0.45
Sendai City	3	23	0.79
Saitama City	3	12	0.20
Chiba City	7	29	0.53
Yokohama City	5	53	0.27
Kawasaki City	9	58	0.75
Sagamihara City	2	14	0.67
Niigata City	1	12	0.41
Shizuoka City	2	12	0.32
Hamamatsu City	5	15	0.24
Nagoya City	3	60	0.28
Kyoto City	5	43	0.48
Osaka City	23	185	0.51
Sakai City	4	35	0.47
Kobe City	4	39	0.32
Okayama City	9	36	0.95
Hiroshima City	3	24	0.47
Kitakyushu City	6	25	0.36
Fukuoka City	3	49	0.52
Kumamoto City	1	16	0.44
23-ku area of Tokyo	56	307	0.45

LTBI: Latent TB Infection

Number of LTBI is not included in the newly notified TB patients,

Major city: city with a population of one million or more

Table 7 is a re-count of Table 6