



Monthly Report of Tuberculosis Surveillance, Japan – August, 2020

The reporting and recording of tuberculosis (TB) and Latent TB Infection (LTBI) are managed at public health centers (PHCs) by the nationwide computerized TB surveillance system in Japan. A monthly report is compiled from the database automatically and regularly on 4th Friday of the next month, and an annual report is also produced much like the monthly report, but with sufficient time for data correction.

Tables and figures shown in the monthly reports are as follows.

Figures

Figure 1. Number of newly notified TB cases by month, Japan, 2017-2020

Figure 2. Newly notified TB cases by sex and age, Japan, summation (Jan. - Aug.) 2020

Figure 3. Notification rate of TB cases by sex and age, Japan, summation (Jan. - Aug.) 2020

Figure 4. Notification rate of TB by prefecture, Japan, summation (Jan. - Aug.) 2020

Figure 5. Notification rate of TB by major city, Japan, summation (Jan. - Aug.) 2020

Figure 6. Number of LTBI, Japan, 2020

Figure 7. Number of LTBI by sex and age group, Japan, summation (Jan. - Aug.) 2017-2020

Tables

Table 1. Newly notified TB cases and rates by sex and age, Japan, 2020

Table 2. Newly notified sputum smear positive pulmonary TB cases and rates by sex and age, Japan, 2020

Table 3. Newly notified TB cases and rates by prefecture, Japan, 2020

Table 4. Newly notified TB cases and rates by major city, Japan, 2020

Table 5. LTBI cases and rates by sex and age, Japan, 2020

Table 6. LTBI cases and rates by prefecture, Japan, 2020

Table 7. LTBI cases and rates by major city, Japan, 2020

Figure 1. Number of newly notified TB cases by month, Japan, 2017-2020

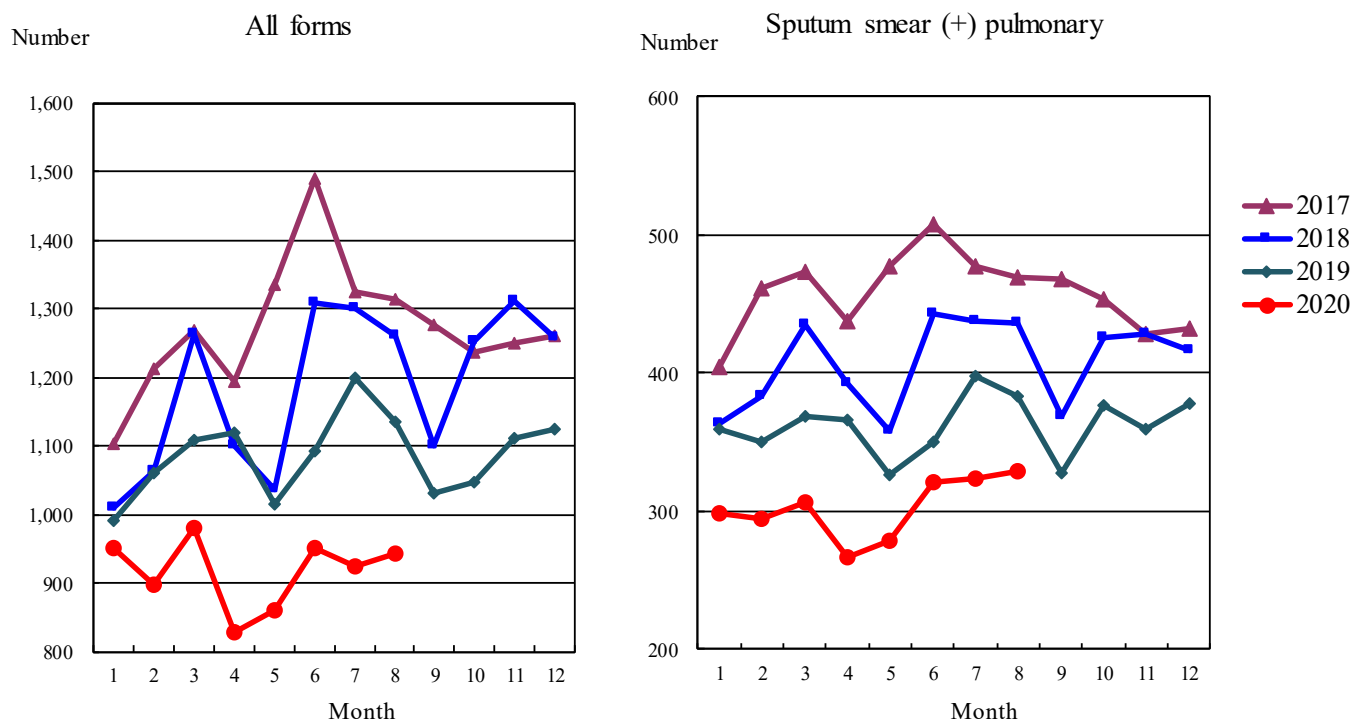


Figure 2. Newly notified TB patients by sex and age, Japan, summation (Jan.-Aug.) 2020

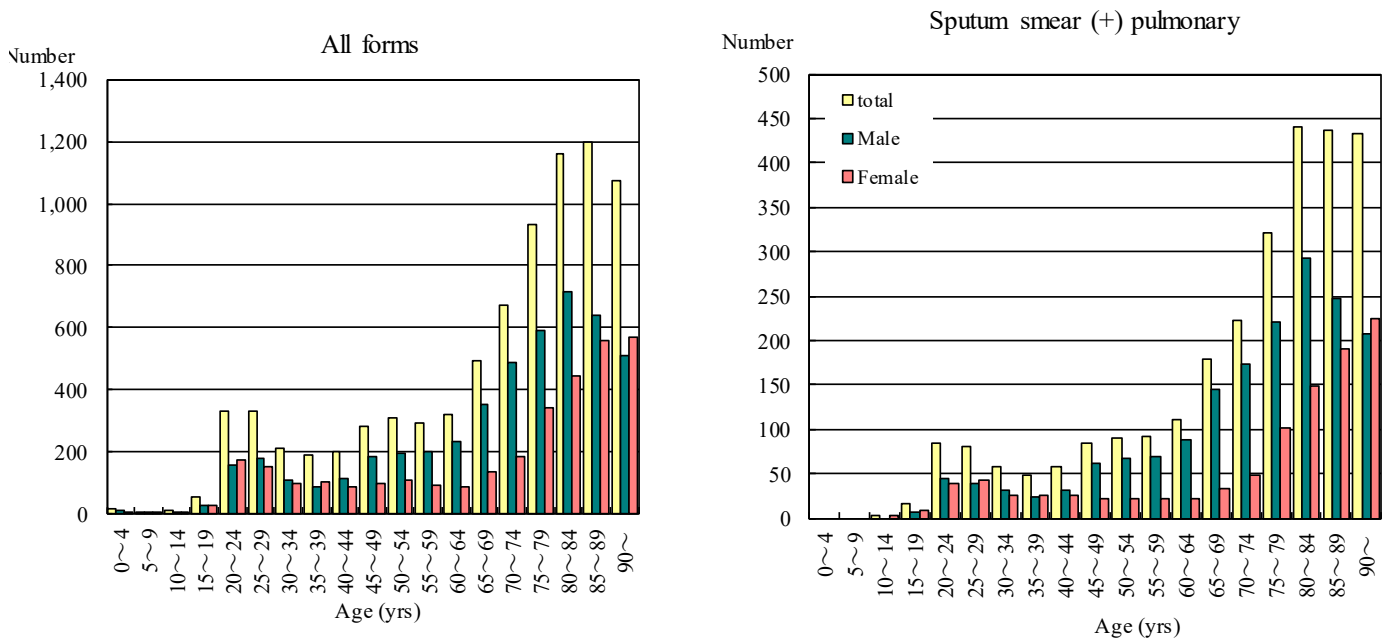


Figure 3. Notification rate of TB cases by sex and age, Japan, summation (Jan.-Aug.) 2020

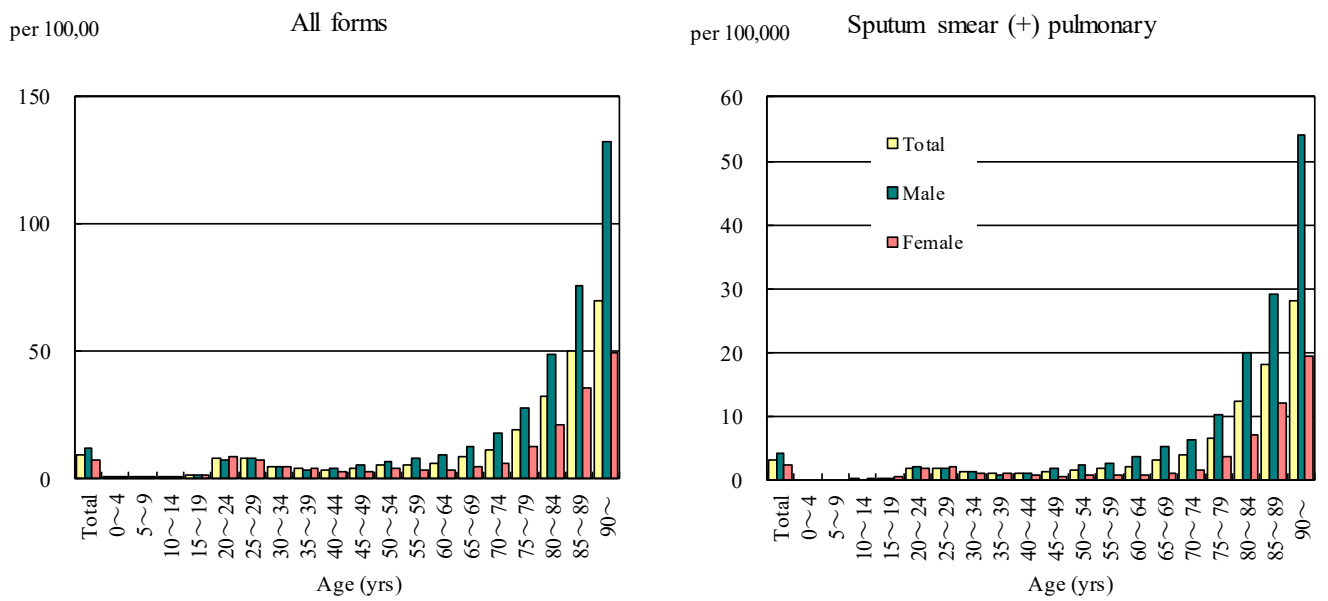


Figure 4. Notification rates of TB by prefecture, Japan, summation (Jan.-Aug.) 2020

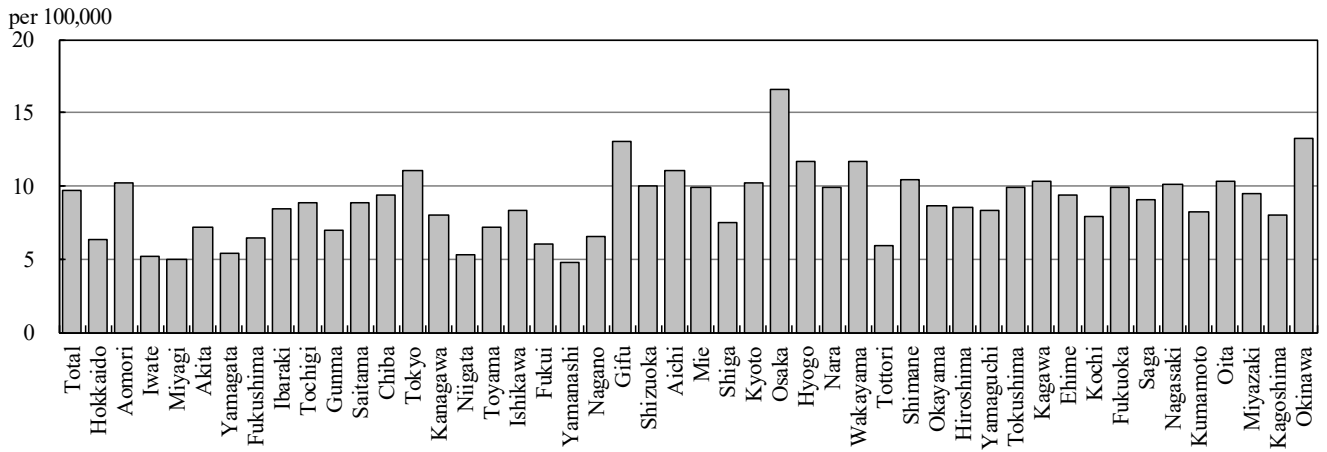


Figure 5. Notification rates of TB major city, Japan, summation (Jan.-Aug.) 2020

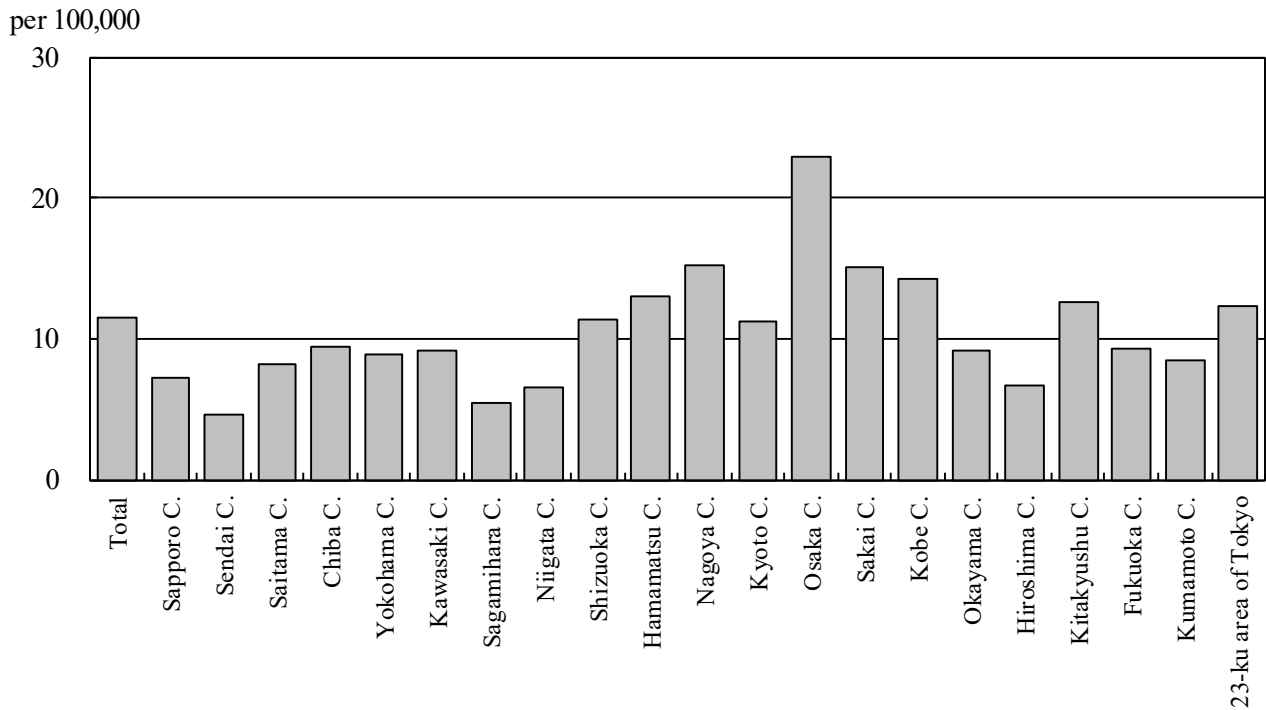


Figure 6. Number of LTBI, Japan, 2017-2020

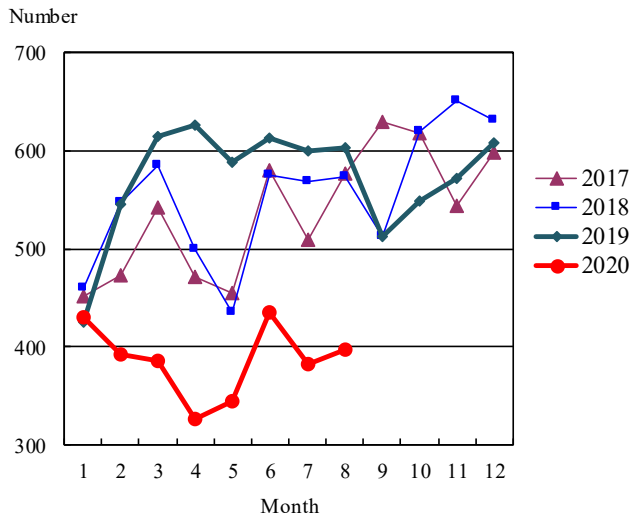


Figure 7. Number of LTBI by sex and age group, Japan, summation (Jan.-Aug.) 2020

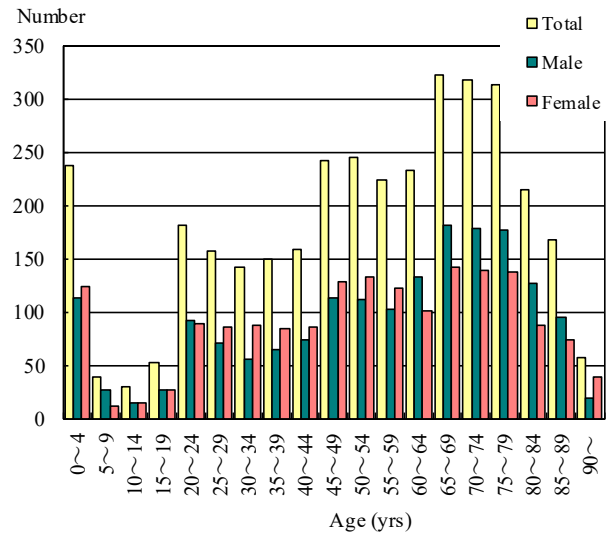


Table 1. Newly notified TB cases and rates by sex and age, Japan, 2020

	Aug.			Summation (Jan.-Aug.)			Notification rate (per 100,000)		
	Total	Male	Female	Total	Male	Female	Total	Male	Female
Total	944	556	388	8,110	4,823	3,287	9.6	11.8	7.6
0~4	3	2	1	17	11	6	0.5	0.7	0.4
5~9	2	2	0	6	5	1	0.2	0.3	0.1
10~14	3	1	2	11	5	6	0.3	0.3	0.3
15~19	2	1	1	57	27	30	1.5	1.4	1.6
20~24	41	21	20	334	158	176	7.8	7.2	8.5
25~29	28	12	16	331	178	153	8.0	8.3	7.6
30~34	23	11	12	212	111	101	4.7	4.8	4.6
35~39	27	13	14	193	90	103	3.8	3.5	4.1
40~44	22	15	7	201	113	88	3.5	3.8	3.1
45~49	38	23	15	285	188	97	4.4	5.7	3.0
50~54	36	25	11	310	198	112	5.4	6.9	3.9
55~59	23	17	6	294	200	94	5.7	7.8	3.7
60~64	32	25	7	321	235	86	6.4	9.5	3.4
65~69	67	49	18	495	356	139	8.5	12.7	4.6
70~74	90	58	32	675	490	185	11.7	17.9	6.0
75~79	118	73	45	933	592	341	19.3	27.4	12.8
80~84	131	86	45	1,159	716	443	32.6	48.9	21.2
85~89	128	61	67	1,200	642	558	49.8	75.6	35.8
90~	130	61	69	1,076	508	568	69.9	131.9	49.2

Temporary registrants = 74, Total of registrants and temporary registrants = 1,018

Rate: summation / (population*8/12)*100,000

Population: as of 1st Oct. 2019

Table 2. Newly notified sputum smear positive pulmonary TB cases and rates by sex and age, Japan, 2020

	Aug.			Summation (Jan.-Aug.)			Notification rate (per 100,000)		
	Total	Male	Female	Total	Male	Female	Total	Male	Female
Total	329	202	127	2,755	1,752	1,003	3.3	4.3	2.3
0~4	0	0	0	0	0	0	0.0	0.0	0.0
5~9	0	0	0	0	0	0	0.0	0.0	0.0
10~14	0	0	0	2	0	2	0.1	0.0	0.1
15~19	1	0	1	16	7	9	0.4	0.4	0.5
20~24	11	6	5	84	45	39	2.0	2.0	1.9
25~29	4	1	3	80	38	42	1.9	1.8	2.1
30~34	6	3	3	58	32	26	1.3	1.4	1.2
35~39	10	3	7	49	23	26	1.0	0.9	1.0
40~44	5	2	3	57	31	26	1.0	1.1	0.9
45~49	6	3	3	84	62	22	1.3	1.9	0.7
50~54	12	11	1	90	68	22	1.6	2.4	0.8
55~59	11	7	4	91	69	22	1.8	2.7	0.9
60~64	11	9	2	110	89	21	2.2	3.6	0.8
65~69	24	21	3	179	145	34	3.1	5.2	1.1
70~74	32	23	9	223	174	49	3.9	6.4	1.6
75~79	39	27	12	322	221	101	6.7	10.2	3.8
80~84	41	30	11	441	293	148	12.4	20.0	7.1
85~89	61	32	29	437	247	190	18.1	29.1	12.2
90~	55	24	31	432	208	224	28.1	54.0	19.4

Rate: summation / (population*8/12)*100,000

Population: as of 1st Oct. 2019

Table 3. Newly notified TB cases and rates by prefecture, Japan, 2020

	Aug.		Summation (Jan.-Aug.)		Notification rate (per 100,000)	
	Newly notified TB	Sputum smear (+)	Newly notified TB	Sputum smear (+)	Newly notified TB	Sputum smear (+)
Total	944	329	8,110	2,755	9.6	3.3
Hokkaido	34	22	222	90	6.3	2.6
Aomori	16	9	85	42	10.2	5.1
Iwate	6	1	42	15	5.1	1.8
Miyagi	8	3	77	35	5.0	2.3
Akita	9	3	46	16	7.1	2.5
Yamagata	3	1	39	17	5.4	2.4
Fukushima	9	3	79	21	6.4	1.7
Ibaraki	17	4	160	39	8.4	2.0
Tochigi	9	2	114	39	8.8	3.0
Gunma	4	0	90	29	6.9	2.2
Saitama	59	23	436	137	8.9	2.8
Chiba	47	13	392	132	9.4	3.2
Tokyo	132	48	1,024	362	11.0	3.9
Kanagawa	65	23	490	179	8.0	2.9
Niigata	8	2	78	20	5.3	1.3
Toyama	4	2	50	17	7.2	2.4
Ishikawa	8	6	63	22	8.3	2.9
Fukui	1	0	31	8	6.1	1.6
Yamanashi	2	0	26	5	4.8	0.9
Nagano	7	4	90	30	6.6	2.2
Gifu	16	6	173	49	13.1	3.7
Shizuoka	26	13	244	74	10.0	3.0
Aichi	54	13	555	179	11.0	3.6
Mie	12	3	117	29	9.9	2.4
Shiga	7	1	71	27	7.5	2.9
Kyoto	20	4	176	61	10.2	3.5
Osaka	112	40	976	355	16.6	6.0
Hyogo	52	20	426	157	11.7	4.3
Nara	10	5	88	29	9.9	3.3
Wakayama	4	2	72	34	11.7	5.5
Tottori	3	1	22	8	5.9	2.2
Shimane	5	3	47	20	10.5	4.4
Okayama	12	1	109	27	8.7	2.1
Hiroshima	19	6	159	56	8.5	3.0
Yamaguchi	13	4	75	21	8.3	2.3
Tokushima	7	2	48	15	9.9	3.1
Kagawa	7	2	66	20	10.4	3.1
Ehime	8	1	84	31	9.4	3.5
Kochi	6	1	37	13	8.0	2.8
Fukuoka	36	9	337	103	9.9	3.0
Saga	8	4	49	19	9.0	3.5
Nagasaki	12	3	89	23	10.1	2.6
Kumamoto	13	4	96	30	8.2	2.6
Oita	4	2	78	33	10.3	4.4
Miyazaki	8	3	68	26	9.5	3.6
Kagoshima	9	3	86	21	8.1	2.0
Okinawa	13	4	128	40	13.2	4.1

Rate: summation / (population*8/12)*100,000

Population: as of 1st Oct. 2019

Table 4. Newly notified TB cases and rates by major city, Japan, 2020

	Aug.		Summation (Jan.-Aug.)		Notification Rate (per 100,000)	
	Newly notified TB	Sputum Smear(+)	Newly notified TB	Sputum Smear(+)	Newly notified TB	Sputum Smear(+)
Total	357	117	2,858	1,010	11.5	4.1
Sapporo City	18	8	95	28	7.2	2.1
Sendai City	5	1	34	15	4.7	2.1
Saitama City	12	2	72	22	8.2	2.5
Chiba City	6	1	61	28	9.4	4.3
Yokohama City	24	10	223	78	8.9	3.1
Kawasaki City	17	4	94	36	9.2	3.5
Sagamihara City	4	2	26	12	5.4	2.5
Niigata City	6	1	35	10	6.6	1.9
Shizuoka City	11	4	53	20	11.4	4.3
Hamamatsu City	6	2	69	23	13.1	4.4
Nagoya City	19	3	237	84	15.3	5.4
Kyoto City	14	2	109	38	11.2	3.9
Osaka City	52	20	418	155	22.9	8.5
Sakai City	9	3	83	33	15.0	6.0
Kobe City	23	8	145	56	14.3	5.5
Okayama City	5	0	43	8	9.1	1.7
Hiroshima City	2	1	53	20	6.6	2.5
Kitakyushu City	10	3	79	22	12.6	3.5
Fukuoka City	3	1	98	32	9.2	3.0
Kumamoto City	6	2	42	11	8.5	2.2
23-ku area of Tokyo	105	39	789	279	12.3	4.3

Rate: summation / (population*8/12)*100,000

Population: as of 1st Oct. 2019

Major city: city with a population of one million or more.

Table 4 is a re-count of Table 3.

Table 5. LTBI cases and rates by sex and age, Japan, 2020

	Aug.			Summation (Jan.-Aug.)			(Ratio) LTBI/Newly notified cases		
	Total	Male	Female	Total	Male	Female	Total	Male	Female
Total	398	228	170	3,478	1,772	1,706	0.4	0.4	0.5
0~4	46	26	20	237	113	124	13.9	10.3	20.7
5~9	5	4	1	38	27	11	6.3	5.4	11.0
10~14	1	1	0	29	15	14	2.6	3.0	2.3
15~19	6	3	3	52	26	26	0.9	1.0	0.9
20~24	40	21	19	181	92	89	0.5	0.6	0.5
25~29	18	12	6	157	71	86	0.5	0.4	0.6
30~34	12	8	4	142	55	87	0.7	0.5	0.9
35~39	12	9	3	149	65	84	0.8	0.7	0.8
40~44	16	10	6	159	74	85	0.8	0.7	1.0
45~49	23	16	7	241	113	128	0.8	0.6	1.3
50~54	18	8	10	245	112	133	0.8	0.6	1.2
55~59	20	9	11	224	102	122	0.8	0.5	1.3
60~64	23	15	8	233	132	101	0.7	0.6	1.2
65~69	37	19	18	322	181	141	0.7	0.5	1.0
70~74	35	21	14	317	178	139	0.5	0.4	0.8
75~79	36	19	17	313	176	137	0.3	0.3	0.4
80~84	22	15	7	214	127	87	0.2	0.2	0.2
85~89	22	9	13	168	94	74	0.1	0.1	0.1
90~	6	3	3	57	19	38	0.1	0.0	0.1

LTBI: latent TB Infection

Number of LTBI is not included in the newly notified TB patients

Table 6. LTBI cases and rates by prefecture, Japan, 2020

	Aug.	Summation (Jan.-Aug.)	
	LTBI	LTBI	(Ratio) LTBI / new TB
Total	398	3,478	0.43
Hokkaido	18	108	0.49
Aomori	7	52	0.61
Iwate	2	25	0.60
Miyagi	8	70	0.91
Akita	1	18	0.39
Yamagata	0	13	0.33
Fukushima	2	41	0.52
Ibaraki	4	93	0.58
Tochigi	3	26	0.23
Gunma	2	32	0.36
Saitama	15	182	0.42
Chiba	36	184	0.47
Tokyo	67	494	0.48
Kanagawa	21	196	0.40
Niigata	0	34	0.44
Toyama	2	21	0.42
Ishikawa	2	21	0.33
Fukui	1	3	0.10
Yamanashi	3	16	0.62
Nagano	2	37	0.41
Gifu	2	51	0.29
Shizuoka	12	79	0.32
Aichi	17	202	0.36
Mie	1	20	0.17
Shiga	3	30	0.42
Kyoto	10	98	0.56
Osaka	58	419	0.43
Hyogo	18	150	0.35
Nara	5	43	0.49
Wakayama	4	22	0.31
Tottori	1	4	0.18
Shimane	1	23	0.49
Okayama	7	70	0.64
Hiroshima	6	69	0.43
Yamaguchi	6	30	0.40
Tokushima	0	10	0.21
Kagawa	2	23	0.35
Ehime	1	12	0.14
Kochi	1	7	0.19
Fukuoka	16	158	0.47
Saga	1	16	0.33
Nagasaki	3	25	0.28
Kumamoto	12	55	0.57
Oita	3	34	0.44
Miyazaki	2	34	0.50
Kagoshima	3	35	0.41
Okinawa	7	93	0.73

LTBI: Latent TB Infection

Number of LTBI is not included in the newly notified TB patients.

Table 7. LTBI cases and rates by major city, Japan, 2020

	Aug.	Summation (Jan.-Aug.)	
	LTBI	LTBI	(Ratio) LTBI / new TB
Total	163	1,257	0.44
Sapporo City	7	42	0.44
Sendai City	4	28	0.82
Saitama City	2	14	0.19
Chiba City	4	33	0.54
Yokohama City	6	61	0.27
Kawasaki City	5	63	0.67
Sagamihara City	2	16	0.62
Niigata City	0	12	0.34
Shizuoka City	1	16	0.30
Hamamatsu City	3	18	0.26
Nagoya City	7	67	0.28
Kyoto City	5	51	0.47
Osaka City	41	229	0.55
Sakai City	4	39	0.47
Kobe City	6	44	0.30
Okayama City	4	40	0.93
Hiroshima City	1	25	0.47
Kitakyushu City	3	28	0.35
Fukuoka City	4	53	0.54
Kumamoto City	4	20	0.48
23-ku area of Tokyo	50	358	0.45

LTBI: Latent TB Infection

Number of LTBI is not included in the newly notified TB patients,

Major city: city with a population of one million or more

Table 7 is a re-count of Table 6