



## Monthly Report of Tuberculosis Surveillance, Japan – October, 2020

The reporting and recording of tuberculosis (TB) and Latent TB Infection (LTBI) are managed at public health centers (PHCs) by the nationwide computerized TB surveillance system in Japan. A monthly report is compiled from the database automatically and regularly on 4<sup>th</sup> Friday of the next month, and an annual report is also produced much like the monthly report, but with sufficient time for data correction.

Tables and figures shown in the monthly reports are as follows.

### Figures

Figure 1. Number of newly notified TB cases by month, Japan, 2017-2020

Figure 2. Newly notified TB cases by sex and age, Japan, summation (Jan. - Oct.) 2020

Figure 3. Notification rate of TB cases by sex and age, Japan, summation (Jan. - Oct.) 2020

Figure 4. Notification rate of TB by prefecture, Japan, summation (Jan. - Oct.) 2020

Figure 5. Notification rate of TB by major city, Japan, summation (Jan. - Oct.) 2020

Figure 6. Number of LTBI, Japan, 2020

Figure 7. Number of LTBI by sex and age group, Japan, summation (Jan. - Oct.) 2017-2020

### Tables

Table 1. Newly notified TB cases and rates by sex and age, Japan, 2020

Table 2. Newly notified sputum smear positive pulmonary TB cases and rates by sex and age, Japan, 2020

Table 3. Newly notified TB cases and rates by prefecture, Japan, 2020

Table 4. Newly notified TB cases and rates by major city, Japan, 2020

Table 5. LTBI cases and rates by sex and age, Japan, 2020

Table 6. LTBI cases and rates by prefecture, Japan, 2020

Table 7. LTBI cases and rates by major city, Japan, 2020

Figure 1. Number of newly notified TB cases by month, Japan, 2017-2020

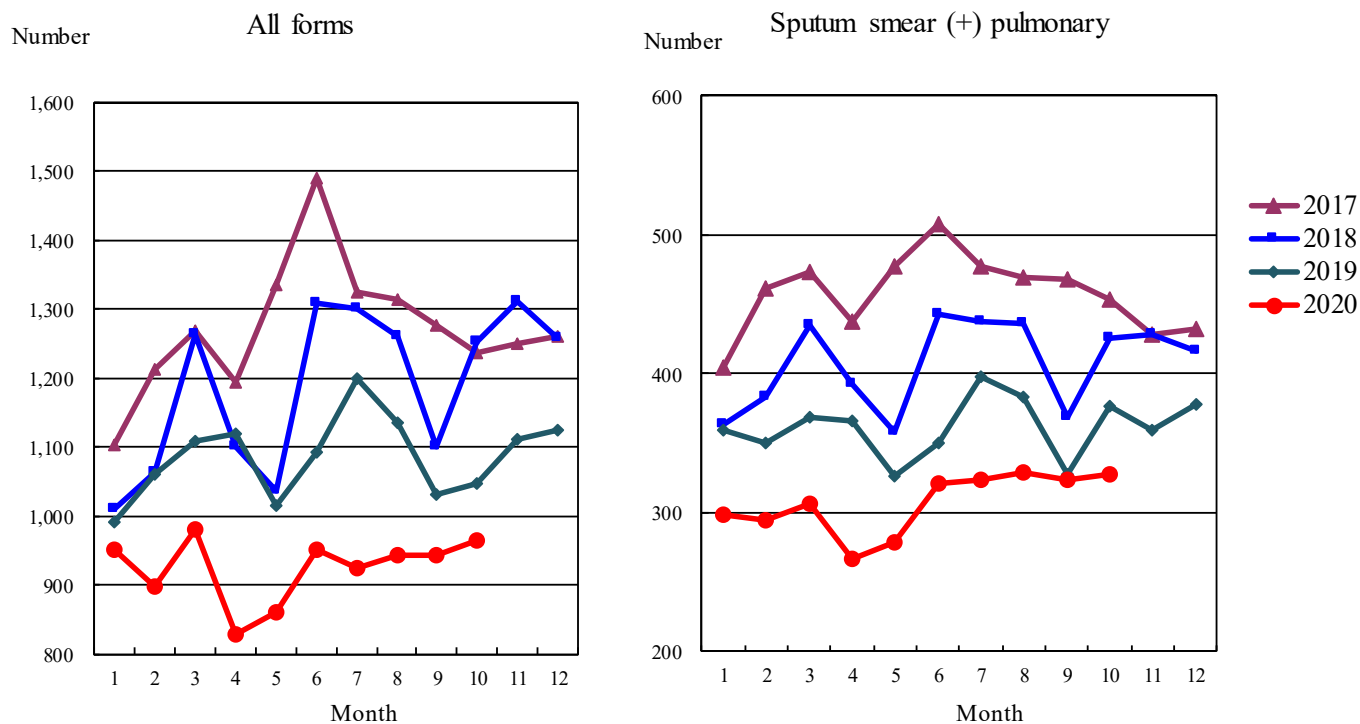


Figure 2. Newly notified TB patients by sex and age, Japan, summation (Jan.-Oct.) 2020

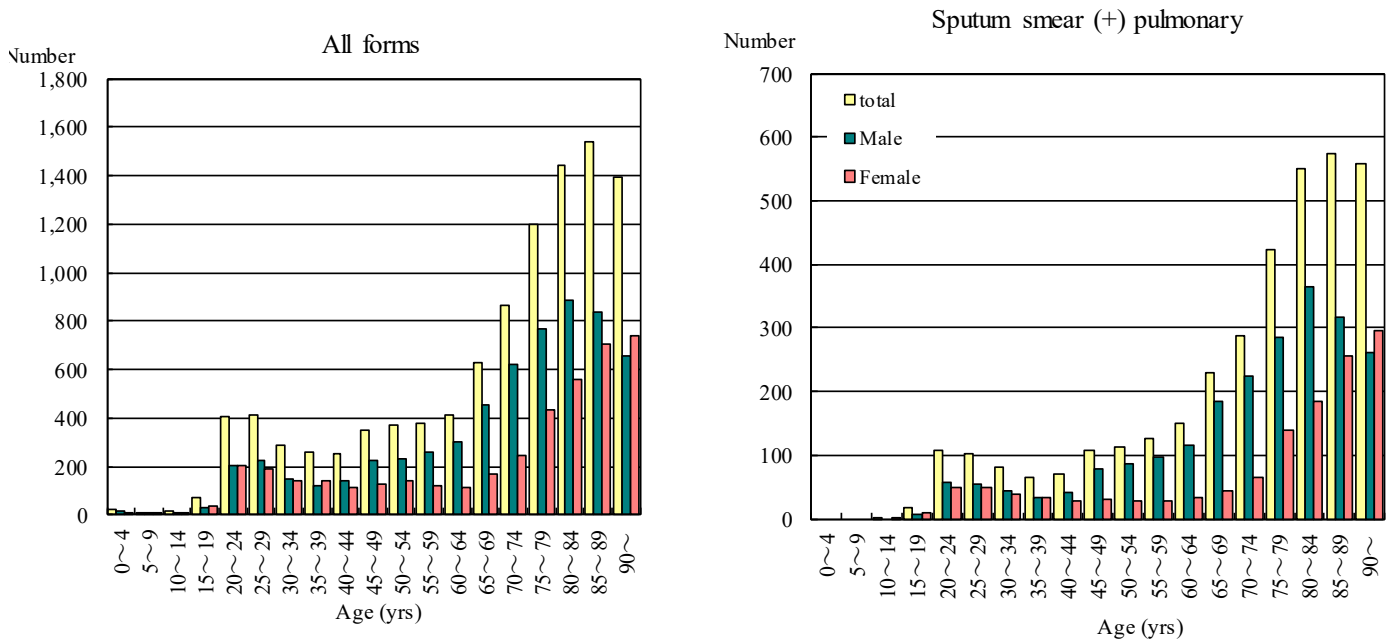


Figure 3. Notification rate of TB cases by sex and age, Japan, summation (Jan.-Oct.) 2020

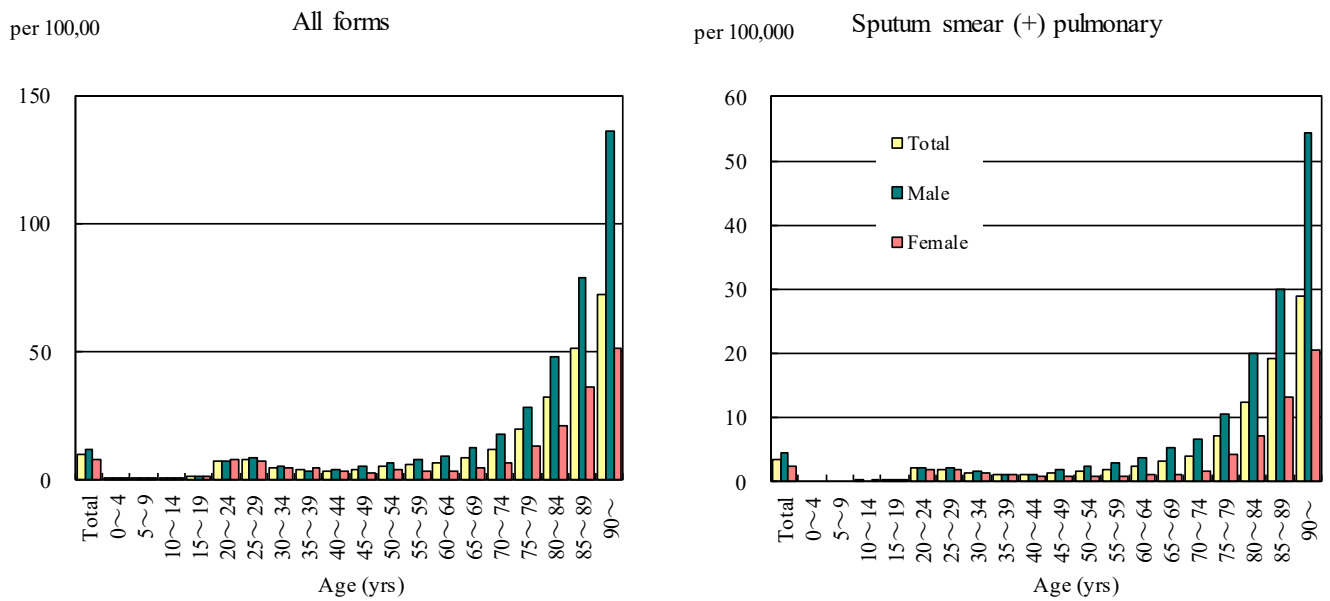


Figure 4. Notification rates of TB by prefecture, Japan, summation (Jan.-Oct.) 2020

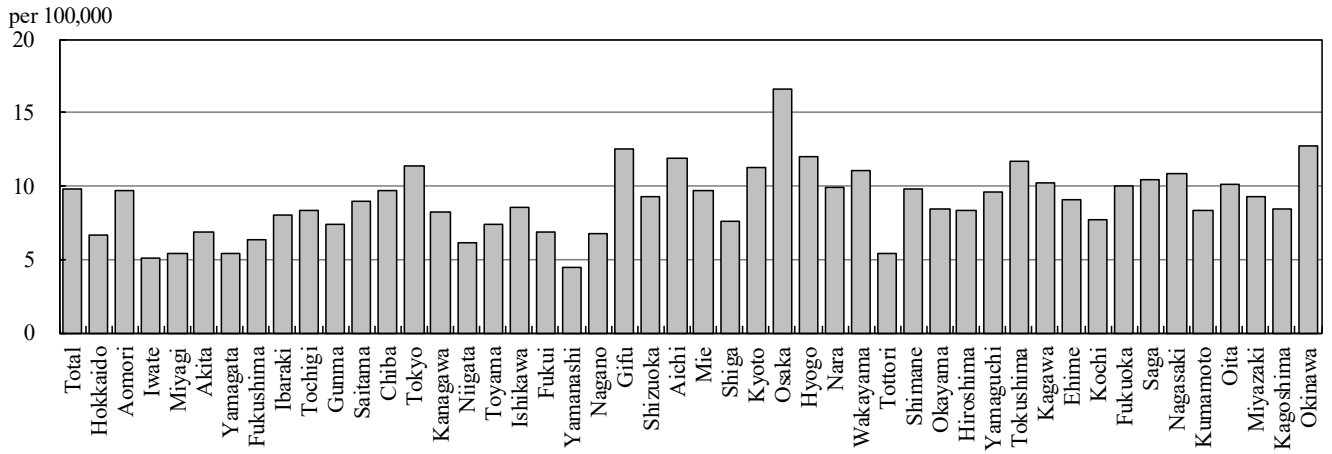


Figure 5. Notification rates of TB major city, Japan, summation (Jan.-Oct.) 2020

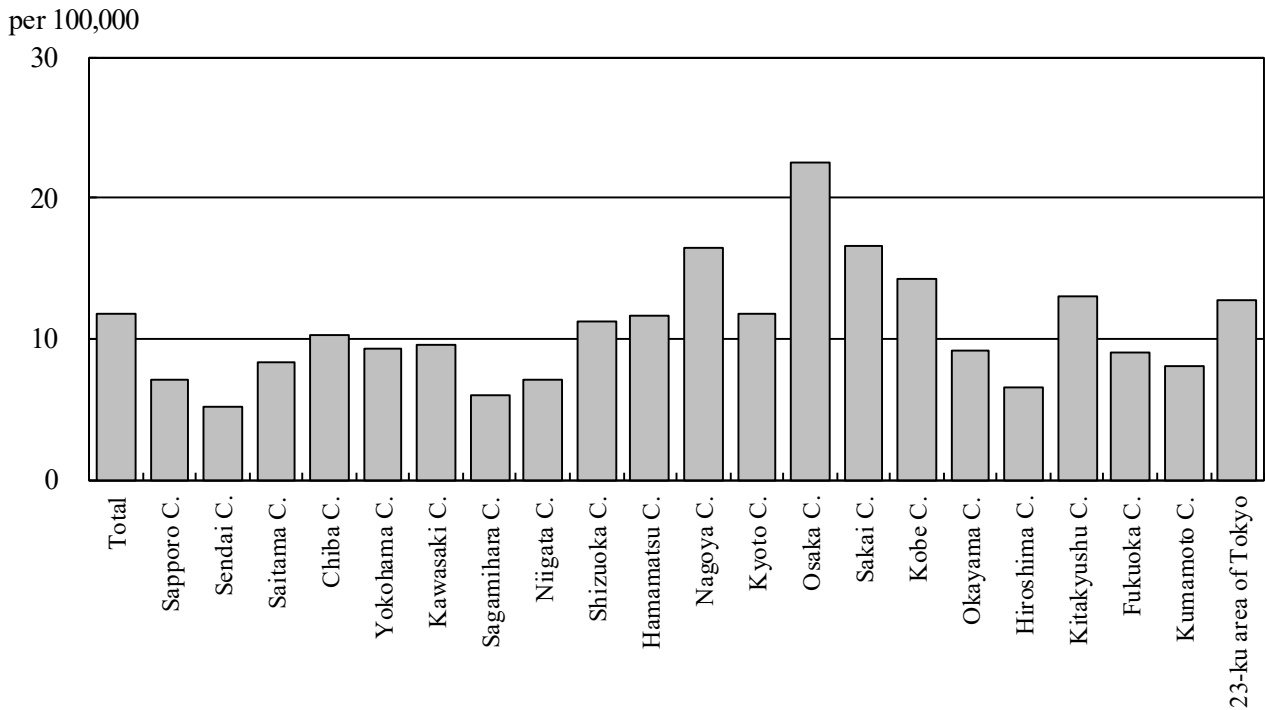


Figure 6. Number of LTBI, Japan, 2017-2020

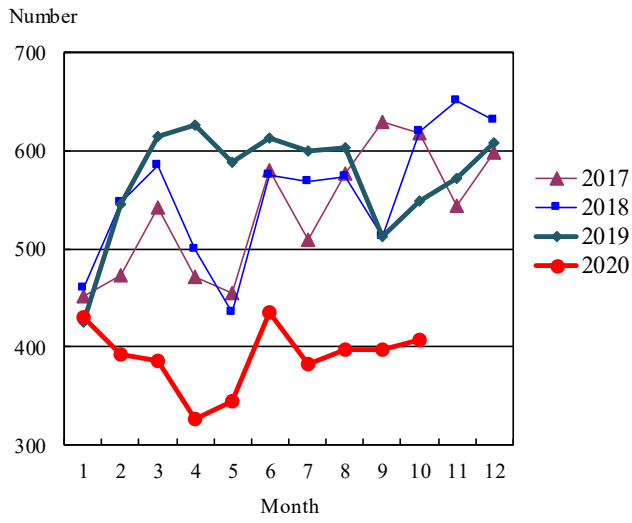


Figure 7. Number of LTBI by sex and age group, Japan, summation (Jan.-Oct.) 2020

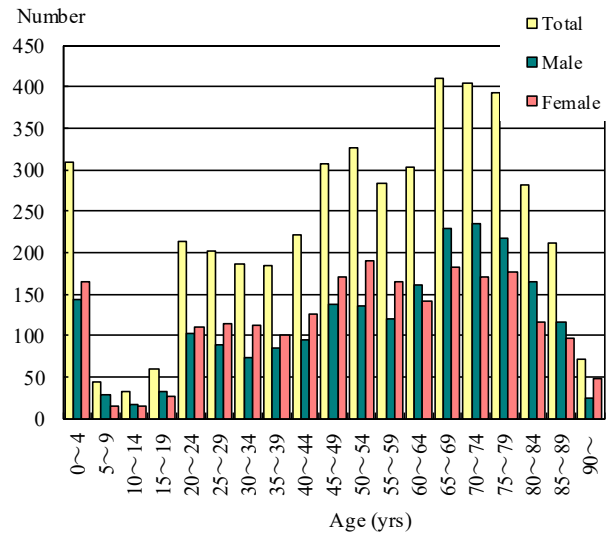


Table 1. Newly notified TB cases and rates by sex and age, Japan, 2020

	Oct.			Summation (Jan.-Oct.)			Notification rate (per 100,000)		
	Total	Male	Female	Total	Male	Female	Total	Male	Female
Total	964	574	390	10,324	6,135	4,189	9.8	12.0	7.8
0~4	2	1	1	24	13	11	0.6	0.6	0.6
5~9	0	0	0	8	6	2	0.2	0.3	0.1
10~14	3	1	2	15	7	8	0.3	0.3	0.4
15~19	4	2	2	69	33	36	1.4	1.3	1.5
20~24	30	18	12	404	202	202	7.6	7.3	7.8
25~29	36	24	12	415	228	187	8.0	8.5	7.4
30~34	34	18	16	286	148	138	5.1	5.2	5.0
35~39	33	16	17	260	121	139	4.1	3.8	4.5
40~44	23	12	11	256	142	114	3.5	3.9	3.2
45~49	30	14	16	352	226	126	4.3	5.5	3.1
50~54	29	20	9	373	235	138	5.2	6.5	3.9
55~59	42	30	12	381	260	121	5.9	8.1	3.8
60~64	37	27	10	413	299	114	6.6	9.7	3.6
65~69	58	42	16	625	453	172	8.6	12.9	4.6
70~74	86	59	27	867	618	249	12.0	18.1	6.5
75~79	114	67	47	1,201	767	434	19.9	28.4	13.0
80~84	117	67	50	1,442	884	558	32.5	48.3	21.4
85~89	152	93	59	1,542	840	702	51.2	79.1	36.0
90~	134	63	71	1,391	653	738	72.3	135.7	51.1

Temporary registrants = 54, Total of registrants and temporary registrants = 1,018

Rate: summation / (population\*10/12)\*100,000

Population: as of 1st Oct. 2019

Table 2. Newly notified sputum smear positive pulmonary TB cases and rates by sex and age, Japan, 2020

	Oct.			Summation (Jan.-Oct.)			Notification rate (per 100,000)		
	Total	Male	Female	Total	Male	Female	Total	Male	Female
Total	328	198	130	3,569	2,252	1,317	3.4	4.4	2.4
0~4	0	0	0	0	0	0	0.0	0.0	0.0
5~9	0	0	0	0	0	0	0.0	0.0	0.0
10~14	0	0	0	2	0	2	0.0	0.0	0.1
15~19	0	0	0	18	8	10	0.4	0.3	0.4
20~24	11	4	7	108	58	50	2.0	2.1	1.9
25~29	5	5	0	103	55	48	2.0	2.1	1.9
30~34	13	8	5	82	44	38	1.5	1.5	1.4
35~39	10	4	6	65	32	33	1.0	1.0	1.1
40~44	9	5	4	70	41	29	1.0	1.1	0.8
45~49	10	6	4	108	77	31	1.3	1.9	0.8
50~54	10	9	1	114	85	29	1.6	2.4	0.8
55~59	18	12	6	126	97	29	2.0	3.0	0.9
60~64	16	11	5	149	115	34	2.4	3.7	1.1
65~69	20	16	4	230	185	45	3.2	5.3	1.2
70~74	23	19	4	289	223	66	4.0	6.5	1.7
75~79	39	22	17	424	286	138	7.0	10.6	4.1
80~84	37	20	17	550	366	184	12.4	20.0	7.1
85~89	60	32	28	574	318	256	19.1	30.0	13.1
90~	47	25	22	557	262	295	28.9	54.4	20.4

Rate: summation / (population\*10/12)\*100,000

Population: as of 1st Oct. 2019

Table 3. Newly notified TB cases and rates by prefecture, Japan, 2020

	Oct.		Summation (Jan.-Oct.)		Notification rate (per 100,000)	
	Newly notified TB	Sputum smear (+)	Newly notified TB	Sputum smear (+)	Newly notified TB	Sputum smear (+)
Total	964	328	10,324	3,569	9.8	3.4
Hokkaido	29	10	289	113	6.6	2.6
Aomori	12	6	101	49	9.7	4.7
Iwate	3	2	52	19	5.1	1.9
Miyagi	8	3	104	47	5.4	2.4
Akita	5	1	55	19	6.8	2.4
Yamagata	1	0	48	21	5.3	2.3
Fukushima	6	5	97	32	6.3	2.1
Ibaraki	10	1	192	51	8.1	2.1
Tochigi	6	2	134	42	8.3	2.6
Gunma	14	4	120	37	7.4	2.3
Saitama	53	17	551	176	9.0	2.9
Chiba	50	16	507	180	9.7	3.5
Tokyo	143	54	1,318	471	11.4	4.1
Kanagawa	67	25	629	236	8.2	3.1
Niigata	13	4	114	31	6.2	1.7
Toyama	8	2	64	20	7.4	2.3
Ishikawa	5	3	81	26	8.5	2.7
Fukui	6	2	44	12	6.9	1.9
Yamanashi	3	2	30	7	4.4	1.0
Nagano	13	7	116	43	6.8	2.5
Gifu	20	4	208	64	12.6	3.9
Shizuoka	12	4	282	85	9.3	2.8
Aichi	73	21	749	234	11.9	3.7
Mie	14	5	144	38	9.7	2.6
Shiga	7	2	90	33	7.6	2.8
Kyoto	25	9	242	89	11.2	4.1
Osaka	120	36	1,222	453	16.6	6.2
Hyogo	61	24	548	206	12.0	4.5
Nara	12	4	110	35	9.9	3.2
Wakayama	6	2	85	40	11.0	5.2
Tottori	0	0	25	8	5.4	1.7
Shimane	3	1	55	23	9.8	4.1
Okayama	9	3	133	36	8.4	2.3
Hiroshima	15	8	194	75	8.3	3.2
Yamaguchi	10	3	108	28	9.5	2.5
Tokushima	3	2	71	23	11.7	3.8
Kagawa	8	2	81	25	10.2	3.1
Ehime	9	5	101	40	9.1	3.6
Kochi	5	1	45	17	7.7	2.9
Fukuoka	44	10	427	133	10.0	3.1
Saga	4	1	71	27	10.5	4.0
Nagasaki	9	2	120	30	10.9	2.7
Kumamoto	10	3	121	39	8.3	2.7
Oita	7	3	96	40	10.1	4.2
Miyazaki	6	2	83	33	9.3	3.7
Kagoshima	11	1	113	30	8.5	2.2
Okinawa	6	4	154	53	12.7	4.4

Rate: summation / (population\*10/12)\*100,000

Population: as of 1st Oct. 2019

Table 4. Newly notified TB cases and rates by major city, Japan, 2020

	Oct.		Summation (Jan.-Oct.)		Notification Rate (per 100,000)	
	Newly notified TB	Sputum Smear(+)	Newly notified TB	Sputum Smear(+)	Newly notified TB	Sputum Smear(+)
Total	395	144	3,659	1,317	11.8	4.2
Sapporo City	13	4	116	36	7.1	2.2
Sendai City	5	1	47	20	5.2	2.2
Saitama City	13	4	91	29	8.3	2.7
Chiba City	14	5	83	37	10.2	4.5
Yokohama City	25	12	289	105	9.3	3.4
Kawasaki City	17	6	122	46	9.6	3.6
Sagamihara City	5	2	36	19	6.0	3.2
Niigata City	5	2	47	15	7.1	2.3
Shizuoka City	5	2	65	26	11.2	4.5
Hamamatsu City	2	1	77	24	11.7	3.6
Nagoya City	34	14	320	111	16.5	5.7
Kyoto City	18	6	144	54	11.8	4.4
Osaka City	50	15	514	191	22.5	8.4
Sakai City	19	10	114	51	16.5	7.4
Kobe City	13	5	181	68	14.3	5.4
Okayama City	5	2	54	11	9.1	1.9
Hiroshima City	6	3	65	27	6.5	2.7
Kitakyushu City	9	0	102	25	13.0	3.2
Fukuoka City	16	5	120	40	9.0	3.0
Kumamoto City	2	1	50	15	8.1	2.4
23-ku area of Tokyo	119	44	1,022	367	12.7	4.6

Rate: summation / (population\*10/12)\*100,000

Population: as of 1st Oct. 2019

Major city: city with a population of one million or more.

Table 4 is a re-count of Table 3.

Table 5. LTBI cases and rates by sex and age, Japan, 2020

	Oct.			Summation (Jan.-Oct.)			(Ratio) LTBI/Newly notified cases		
	Total	Male	Female	Total	Male	Female	Total	Male	Female
Total	408	176	232	4,438	2,201	2,237	0.4	0.4	0.5
0~4	30	16	14	308	144	164	12.8	11.1	14.9
5~9	4	1	3	43	28	15	5.4	4.7	7.5
10~14	2	1	1	32	17	15	2.1	2.4	1.9
15~19	4	4	0	59	33	26	0.9	1.0	0.7
20~24	13	6	7	213	102	111	0.5	0.5	0.5
25~29	21	6	15	201	88	113	0.5	0.4	0.6
30~34	15	6	9	186	74	112	0.7	0.5	0.8
35~39	17	8	9	184	84	100	0.7	0.7	0.7
40~44	28	9	19	221	95	126	0.9	0.7	1.1
45~49	25	7	18	307	137	170	0.9	0.6	1.3
50~54	32	8	24	326	136	190	0.9	0.6	1.4
55~59	25	7	18	284	119	165	0.7	0.5	1.4
60~64	26	10	16	302	161	141	0.7	0.5	1.2
65~69	32	18	14	411	228	183	0.7	0.5	1.1
70~74	38	23	15	404	234	170	0.5	0.4	0.7
75~79	38	19	19	393	217	176	0.3	0.3	0.4
80~84	30	16	14	281	165	116	0.2	0.2	0.2
85~89	17	9	8	212	115	97	0.1	0.1	0.1
90~	11	2	9	71	24	47	0.1	0.0	0.1

LTBI: latent TB Infection

Number of LTBI is not included in the newly notified TB patients



Table 6. LTBI cases and rates by prefecture, Japan, 2020

	Oct.	Summation (Jan.-Oct.)	
	LTBI	LTBI	(Ratio) LTBI / new TB
Total	408	4,438	0.43
Hokkaido	22	167	0.58
Aomori	2	66	0.65
Iwate	1	32	0.62
Miyagi	3	86	0.83
Akita	3	23	0.42
Yamagata	8	27	0.56
Fukushima	1	46	0.47
Ibaraki	11	121	0.63
Tochigi	7	37	0.28
Gunma	6	44	0.37
Saitama	14	217	0.39
Chiba	22	233	0.46
Tokyo	72	638	0.48
Kanagawa	16	242	0.38
Niigata	3	47	0.41
Toyama	4	31	0.48
Ishikawa	4	28	0.35
Fukui	2	5	0.11
Yamanashi	0	16	0.53
Nagano	8	50	0.43
Gifu	7	61	0.29
Shizuoka	9	101	0.36
Aichi	20	255	0.34
Mie	3	25	0.17
Shiga	5	40	0.44
Kyoto	17	145	0.60
Osaka	45	514	0.42
Hyogo	18	187	0.34
Nara	2	50	0.45
Wakayama	4	28	0.33
Tottori	1	6	0.24
Shimane	1	25	0.45
Okayama	3	79	0.59
Hiroshima	14	94	0.48
Yamaguchi	1	45	0.42
Tokushima	1	15	0.21
Kagawa	4	33	0.41
Ehime	6	23	0.23
Kochi	0	7	0.16
Fukuoka	14	191	0.45
Saga	5	23	0.32
Nagasaki	3	33	0.28
Kumamoto	3	58	0.48
Oita	3	43	0.45
Miyazaki	2	38	0.46
Kagoshima	4	56	0.50
Okinawa	4	107	0.69

LTBI: Latent TB Infection

Number of LTBI is not included in the newly notified TB patients.

Table 7. LTBI cases and rates by major city, Japan, 2020

	Oct.	Summation (Jan.-Oct.)	
	LTBI	LTBI	(Ratio) LTBI / new TB
Total	169	1,612	0.44
Sapporo City	11	66	0.57
Sendai City	0	34	0.72
Saitama City	1	15	0.16
Chiba City	7	44	0.53
Yokohama City	5	80	0.28
Kawasaki City	7	77	0.63
Sagamihara City	0	19	0.53
Niigata City	1	17	0.36
Shizuoka City	3	23	0.35
Hamamatsu City	4	27	0.35
Nagoya City	8	83	0.26
Kyoto City	9	71	0.49
Osaka City	24	283	0.55
Sakai City	1	44	0.39
Kobe City	8	52	0.29
Okayama City	3	45	0.83
Hiroshima City	4	34	0.52
Kitakyushu City	5	40	0.39
Fukuoka City	4	65	0.54
Kumamoto City	0	21	0.42
23-ku area of Tokyo	64	472	0.46

LTBI: Latent TB Infection

Number of LTBI is not included in the newly notified TB patients,

Major city: city with a population of one million or more

Table 7 is a re-count of Table 6