



Monthly Report of Tuberculosis Surveillance, Japan – December, 2020

The reporting and recording of tuberculosis (TB) and Latent TB Infection (LTBI) are managed at public health centers (PHCs) by the nationwide computerized TB surveillance system in Japan. A monthly report is compiled from the database automatically and regularly on 4th Friday of the next month, and an annual report is also produced much like the monthly report, but with sufficient time for data correction.

Tables and figures shown in the monthly reports are as follows.

Figures

Figure 1. Number of newly notified TB cases by month, Japan, 2017-2020

Figure 2. Newly notified TB cases by sex and age, Japan, summation (Jan. - Dec.) 2020

Figure 3. Notification rate of TB cases by sex and age, Japan, summation (Jan. - Dec.) 2020

Figure 4. Notification rate of TB by prefecture, Japan, summation (Jan. - Dec.) 2020

Figure 5. Notification rate of TB by major city, Japan, summation (Jan. - Dec.) 2020

Figure 6. Number of LTBI, Japan, 2020

Figure 7. Number of LTBI by sex and age group, Japan, summation (Jan. - Dec.) 2017-2020

Tables

Table 1. Newly notified TB cases and rates by sex and age, Japan, 2020

Table 2. Newly notified sputum smear positive pulmonary TB cases and rates by sex and age, Japan, 2020

Table 3. Newly notified TB cases and rates by prefecture, Japan, 2020

Table 4. Newly notified TB cases and rates by major city, Japan, 2020

Table 5. LTBI cases and rates by sex and age, Japan, 2020

Table 6. LTBI cases and rates by prefecture, Japan, 2020

Table 7. LTBI cases and rates by major city, Japan, 2020

Figure 1. Number of newly notified TB cases by month, Japan, 2017-2020

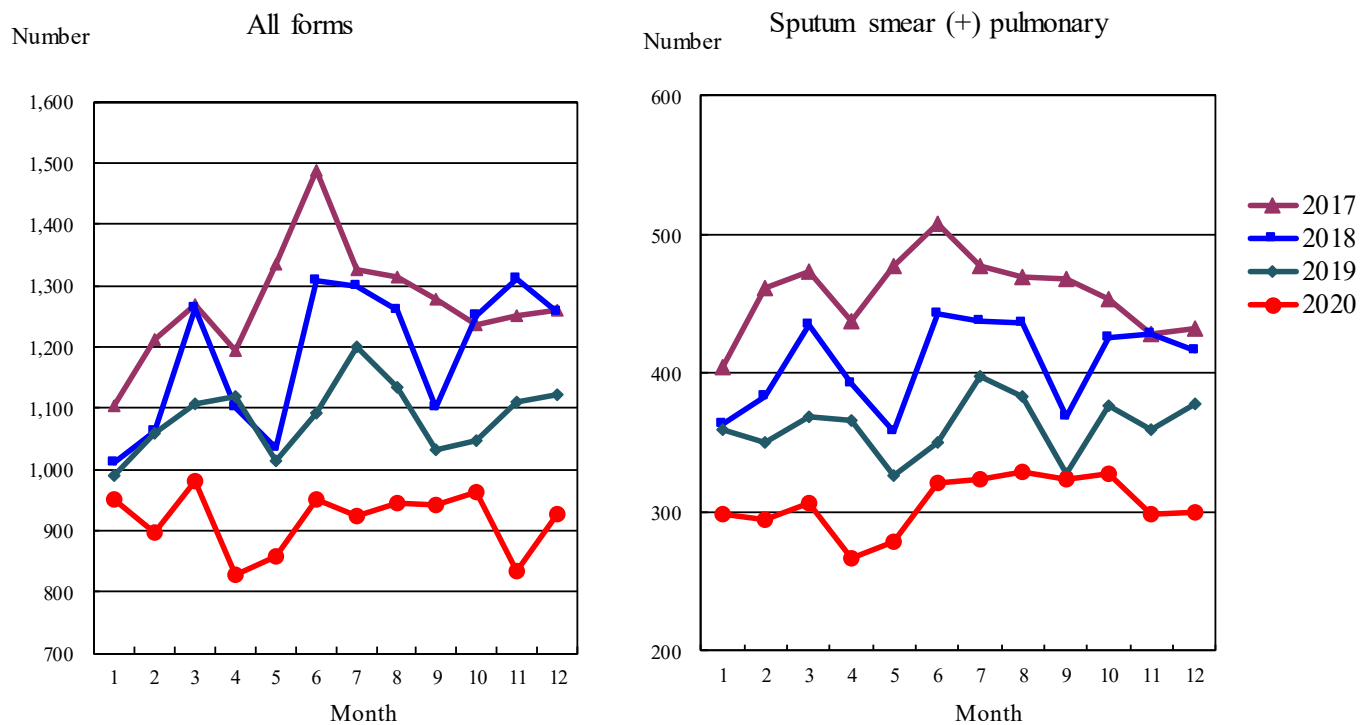


Figure 2. Newly notified TB patients by sex and age, Japan, summation (Jan.-Dec.) 2020

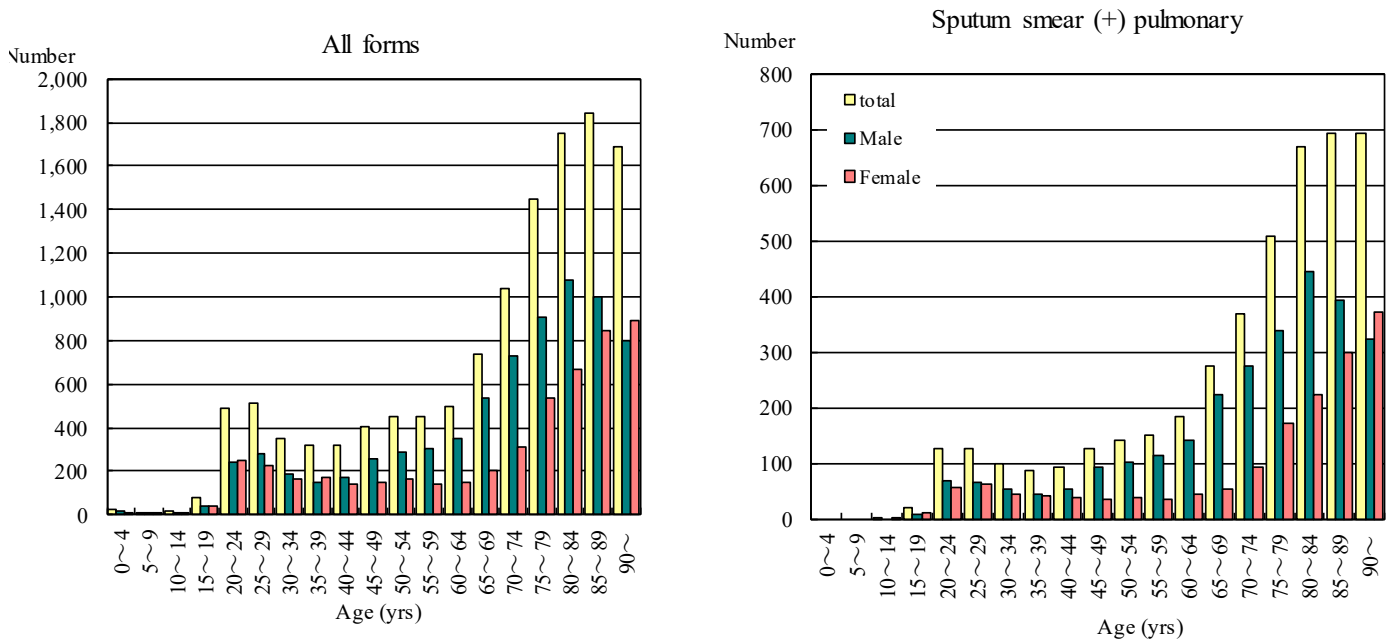


Figure 3. Notification rate of TB cases by sex and age, Japan, summation (Jan.-Dec.) 2020

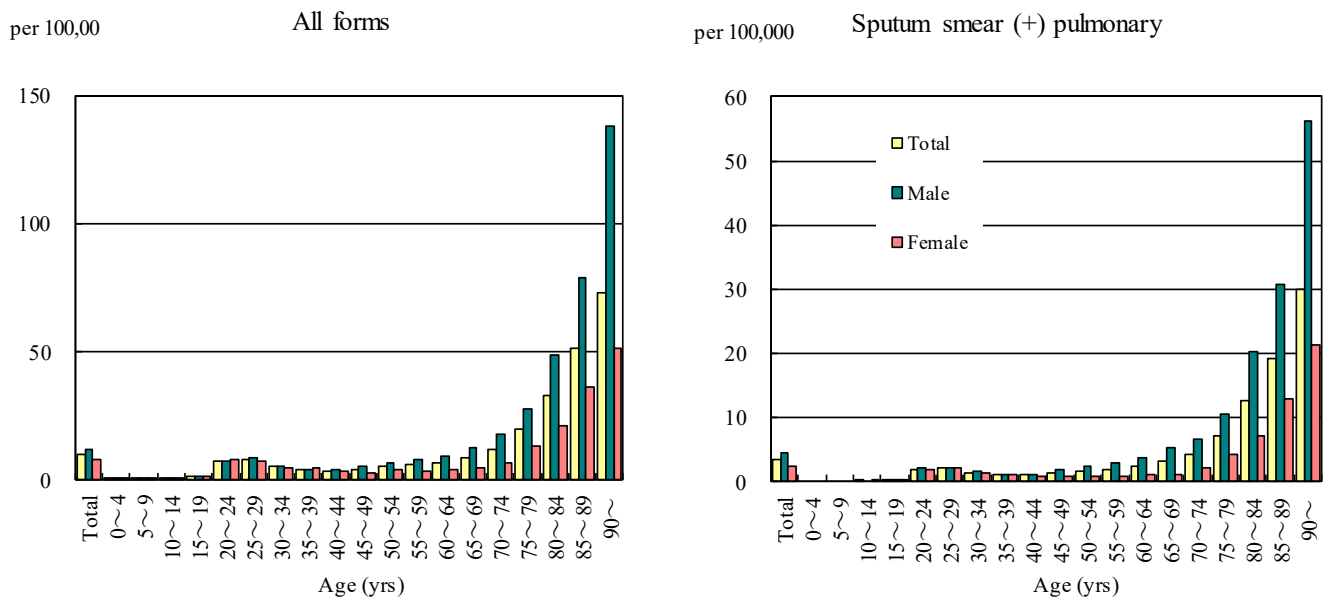


Figure 4. Notification rates of TB by prefecture, Japan, summation (Jan.-Dec.) 2020

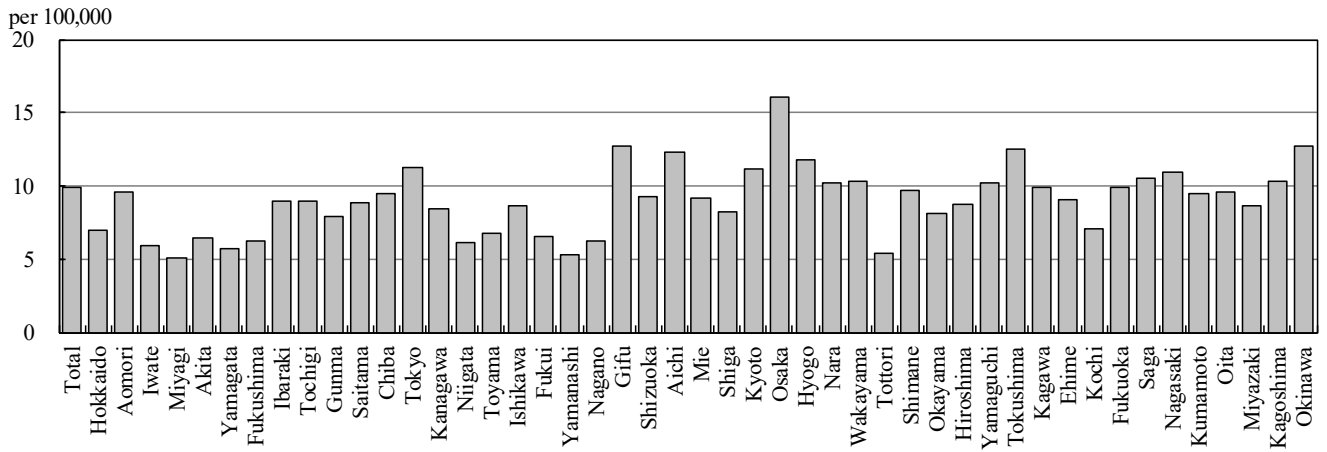


Figure 5. Notification rates of TB major city, Japan, summation (Jan.-Dec.) 2020

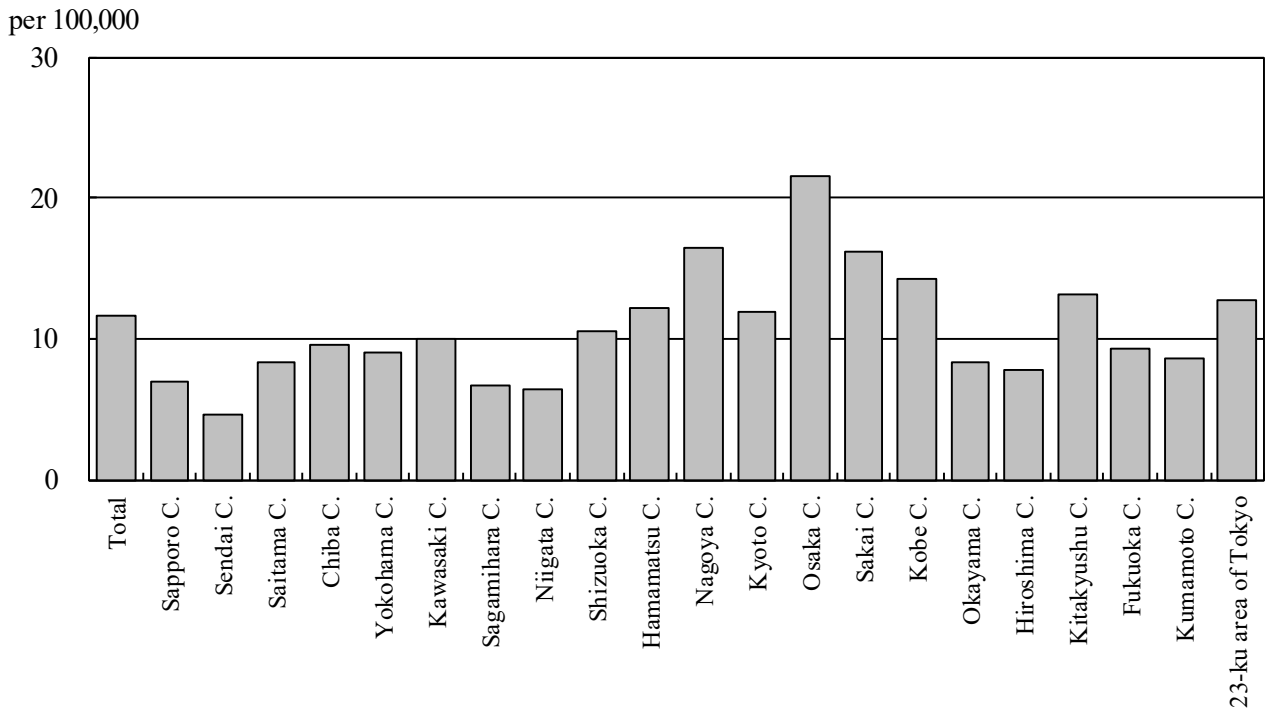


Figure 6. Number of LTBI, Japan, 2017-2020

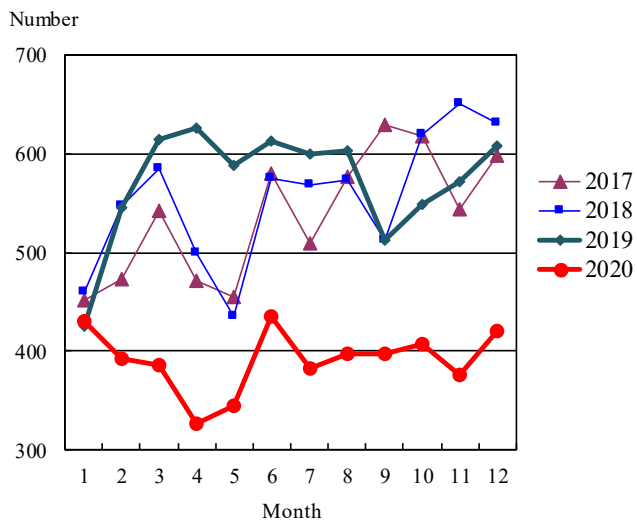


Figure 7. Number of LTBI by sex and age group, Japan, summation (Jan.-Dec.) 2020

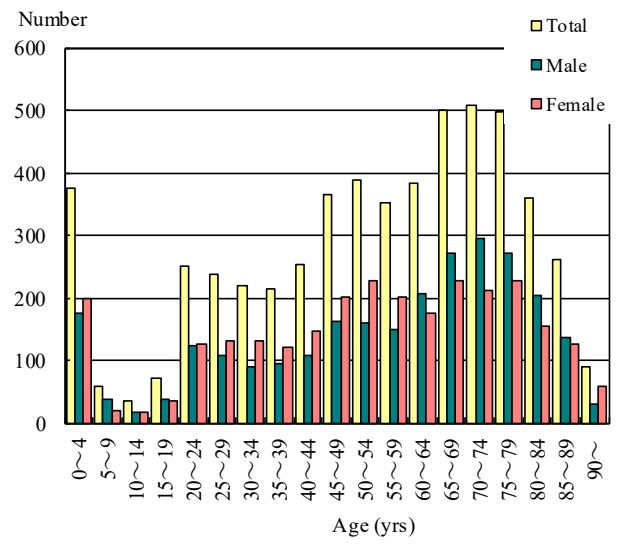


Table 1. Newly notified TB cases and rates by sex and age, Japan, 2020

	Dec.			Summation (Jan.-Dec.)			Notification rate (per 100,000)		
	Total	Male	Female	Total	Male	Female	Total	Male	Female
Total	927	551	376	12,430	7,349	5,081	9.9	12.0	7.8
0~4	2	0	2	28	15	13	0.6	0.6	0.6
5~9	0	0	0	9	6	3	0.2	0.2	0.1
10~14	1	0	1	17	7	10	0.3	0.3	0.4
15~19	6	4	2	78	38	40	1.3	1.3	1.4
20~24	35	18	17	491	245	246	7.7	7.4	8.0
25~29	48	27	21	510	284	226	8.2	8.8	7.5
30~34	29	18	11	351	185	166	5.2	5.4	5.0
35~39	18	8	10	321	152	169	4.3	4.0	4.5
40~44	29	17	12	316	173	143	3.6	3.9	3.3
45~49	18	12	6	401	255	146	4.1	5.1	3.0
50~54	31	19	12	451	286	165	5.3	6.6	3.9
55~59	29	21	8	447	304	143	5.8	7.9	3.7
60~64	40	26	14	500	353	147	6.6	9.5	3.9
65~69	55	40	15	737	533	204	8.5	12.6	4.5
70~74	85	55	30	1,042	728	314	12.0	17.8	6.8
75~79	97	56	41	1,446	907	539	20.0	28.0	13.5
80~84	131	88	43	1,749	1,078	671	32.8	49.0	21.4
85~89	141	73	68	1,846	1,002	844	51.1	78.7	36.1
90~	132	69	63	1,690	798	892	73.2	138.1	51.5

Temporary registrants = 58, Total of registrants and temporary registrants = 985

Rate: summation / (population*12/12)*100,000

Population: as of 1st Oct. 2019

Table 2. Newly notified sputum smear positive pulmonary TB cases and rates by sex and age, Japan, 2020

	Dec.			Summation (Jan.-Dec.)			Notification rate (per 100,000)		
	Total	Male	Female	Total	Male	Female	Total	Male	Female
Total	300	182	118	4,355	2,737	1,618	3.5	4.5	2.5
0~4	0	0	0	0	0	0	0.0	0.0	0.0
5~9	0	0	0	0	0	0	0.0	0.0	0.0
10~14	0	0	0	3	0	3	0.1	0.0	0.1
15~19	1	0	1	20	9	11	0.3	0.3	0.4
20~24	4	3	1	125	68	57	2.0	2.1	1.8
25~29	11	4	7	127	66	61	2.0	2.1	2.0
30~34	10	7	3	98	54	44	1.5	1.6	1.3
35~39	6	3	3	87	45	42	1.2	1.2	1.1
40~44	9	3	6	91	53	38	1.0	1.2	0.9
45~49	6	3	3	127	91	36	1.3	1.8	0.7
50~54	7	2	5	140	101	39	1.6	2.3	0.9
55~59	8	7	1	149	114	35	1.9	3.0	0.9
60~64	14	11	3	184	141	43	2.4	3.8	1.1
65~69	20	15	5	275	223	52	3.2	5.3	1.2
70~74	37	22	15	368	274	94	4.2	6.7	2.0
75~79	28	19	9	508	338	170	7.0	10.4	4.2
80~84	43	30	13	667	444	223	12.5	20.2	7.1
85~89	41	25	16	692	392	300	19.2	30.8	12.8
90~	55	28	27	694	324	370	30.1	56.1	21.4

Rate: summation / (population*12/12)*100,000

Population: as of 1st Oct. 2019

Table 3. Newly notified TB cases and rates by prefecture, Japan, 2020

	Dec.		Summation (Jan.-Dec.)		Notification rate (per 100,000)	
	Newly notified TB	Sputum smear (+)	Newly notified TB	Sputum smear (+)	Newly notified TB	Sputum smear (+)
Total	927	300	12,430	4,355	9.9	3.5
Hokkaido	25	10	367	146	7.0	2.8
Aomori	12	4	120	59	9.6	4.7
Iwate	5	1	72	25	5.9	2.0
Miyagi	6	1	118	51	5.1	2.2
Akita	4	0	62	23	6.4	2.4
Yamagata	6	3	62	27	5.8	2.5
Fukushima	8	1	115	35	6.2	1.9
Ibaraki	5	2	256	75	9.0	2.6
Tochigi	9	3	173	53	8.9	2.7
Gunma	17	2	154	45	7.9	2.3
Saitama	38	16	648	217	8.8	3.0
Chiba	36	10	593	206	9.5	3.3
Tokyo	119	43	1,563	571	11.2	4.1
Kanagawa	78	20	776	283	8.4	3.1
Niigata	8	1	136	36	6.1	1.6
Toyama	5	2	71	23	6.8	2.2
Ishikawa	6	3	98	30	8.6	2.6
Fukui	0	0	50	14	6.5	1.8
Yamanashi	2	0	43	11	5.3	1.4
Nagano	4	1	128	49	6.2	2.4
Gifu	17	7	252	78	12.7	3.9
Shizuoka	25	12	337	111	9.2	3.0
Aichi	83	21	930	296	12.3	3.9
Mie	11	3	164	45	9.2	2.5
Shiga	5	2	116	43	8.2	3.0
Kyoto	28	8	289	107	11.2	4.1
Osaka	114	39	1,416	543	16.1	6.2
Hyogo	54	21	644	242	11.8	4.4
Nara	10	4	136	49	10.2	3.7
Wakayama	3	3	95	47	10.3	5.1
Tottori	2	1	30	10	5.4	1.8
Shimane	4	1	65	25	9.6	3.7
Okayama	8	1	154	45	8.1	2.4
Hiroshima	14	6	244	95	8.7	3.4
Yamaguchi	15	4	139	38	10.2	2.8
Tokushima	6	3	91	31	12.5	4.3
Kagawa	6	1	95	25	9.9	2.6
Ehime	12	4	122	46	9.1	3.4
Kochi	3	3	49	22	7.0	3.2
Fukuoka	42	10	507	155	9.9	3.0
Saga	7	5	86	36	10.6	4.4
Nagasaki	9	3	145	39	10.9	2.9
Kumamoto	17	5	166	52	9.5	3.0
Oita	10	4	109	45	9.6	4.0
Miyazaki	3	2	93	38	8.7	3.5
Kagoshima	15	4	166	54	10.4	3.4
Okinawa	11	0	185	59	12.7	4.1

Rate: summation / (population*12/12)*100,000

Population: as of 1st Oct. 2019

Table 4. Newly notified TB cases and rates by major city, Japan, 2020

	Dec.		Summation (Jan.-Dec.)		Notification Rate (per 100,000)	
	Newly notified TB	Sputum Smear(+)	Newly notified TB	Sputum Smear(+)	Newly notified TB	Sputum Smear(+)
Total	368	119	4,365	1,594	11.7	4.3
Sapporo City	12	4	137	46	7.0	2.3
Sendai City	1	1	50	21	4.6	1.9
Saitama City	7	3	109	38	8.3	2.9
Chiba City	8	2	94	40	9.6	4.1
Yokohama City	23	6	336	121	9.0	3.2
Kawasaki City	15	1	153	53	10.0	3.5
Sagamihara City	7	1	48	20	6.6	2.8
Niigata City	1	1	51	17	6.4	2.1
Shizuoka City	5	4	74	31	10.6	4.4
Hamamatsu City	10	4	96	33	12.1	4.2
Nagoya City	41	11	384	138	16.5	5.9
Kyoto City	17	3	174	66	11.9	4.5
Osaka City	41	14	591	227	21.6	8.3
Sakai City	15	5	134	59	16.2	7.1
Kobe City	18	8	217	81	14.2	5.3
Okayama City	3	0	59	14	8.3	2.0
Hiroshima City	7	3	93	36	7.8	3.0
Kitakyushu City	14	5	123	31	13.1	3.3
Fukuoka City	14	4	148	49	9.3	3.1
Kumamoto City	8	3	64	20	8.7	2.7
23-ku area of Tokyo	101	36	1,230	453	12.8	4.7

Rate: summation / (population*12/12)*100,000

Population: as of 1st Oct. 2019

Major city: city with a population of one million or more.

Table 4 is a re-count of Table 3.

Table 5. LTBI cases and rates by sex and age, Japan, 2020

	Dec.			Summation (Jan.-Dec.)			(Ratio) LTBI/Newly notified cases		
	Total	Male	Female	Total	Male	Female	Total	Male	Female
Total	421	208	213	5,421	2,685	2,736	0.4	0.4	0.5
0~4	32	17	15	375	175	200	13.4	11.7	15.4
5~9	11	9	2	58	38	20	6.4	6.3	6.7
10~14	2	1	1	36	18	18	2.1	2.6	1.8
15~19	3	1	2	72	37	35	0.9	1.0	0.9
20~24	18	11	7	250	124	126	0.5	0.5	0.5
25~29	16	5	11	238	107	131	0.5	0.4	0.6
30~34	14	6	8	220	90	130	0.6	0.5	0.8
35~39	13	4	9	215	95	120	0.7	0.6	0.7
40~44	12	7	5	254	108	146	0.8	0.6	1.0
45~49	25	11	14	365	163	202	0.9	0.6	1.4
50~54	32	13	19	388	161	227	0.9	0.6	1.4
55~59	29	16	13	351	150	201	0.8	0.5	1.4
60~64	42	19	23	382	207	175	0.8	0.6	1.2
65~69	35	18	17	500	272	228	0.7	0.5	1.1
70~74	44	29	15	507	295	212	0.5	0.4	0.7
75~79	36	21	15	498	272	226	0.3	0.3	0.4
80~84	34	15	19	360	205	155	0.2	0.2	0.2
85~89	18	4	14	262	137	125	0.1	0.1	0.1
90~	5	1	4	90	31	59	0.1	0.0	0.1

LTBI: latent TB Infection

Number of LTBI is not included in the newly notified TB patients

Table 6. LTBI cases and rates by prefecture, Japan, 2020

	Dec.	Summation (Jan.-Dec.)	
	LTBI	LTBI	(Ratio) LTBI / new TB
Total	421	5,421	0.44
Hokkaido	18	219	0.60
Aomori	5	76	0.63
Iwate	3	48	0.67
Miyagi	8	98	0.83
Akita	2	25	0.40
Yamagata	2	35	0.56
Fukushima	3	53	0.46
Ibaraki	5	148	0.58
Tochigi	1	39	0.23
Gunma	5	53	0.34
Saitama	23	273	0.42
Chiba	23	284	0.48
Tokyo	55	757	0.48
Kanagawa	36	309	0.40
Niigata	4	55	0.40
Toyama	5	39	0.55
Ishikawa	2	33	0.34
Fukui	3	11	0.22
Yamanashi	0	23	0.53
Nagano	7	61	0.48
Gifu	7	80	0.32
Shizuoka	6	127	0.38
Aichi	29	322	0.35
Mie	1	30	0.18
Shiga	8	59	0.51
Kyoto	10	164	0.57
Osaka	44	607	0.43
Hyogo	20	228	0.35
Nara	3	63	0.46
Wakayama	0	27	0.28
Tottori	0	7	0.23
Shimane	0	29	0.45
Okayama	5	92	0.60
Hiroshima	10	123	0.50
Yamaguchi	8	61	0.44
Tokushima	1	21	0.23
Kagawa	7	41	0.43
Ehime	0	27	0.22
Kochi	0	8	0.16
Fukuoka	23	230	0.45
Saga	0	23	0.27
Nagasaki	6	40	0.28
Kumamoto	4	68	0.41
Oita	6	52	0.48
Miyazaki	0	46	0.49
Kagoshima	2	72	0.43
Okinawa	11	135	0.73

LTBI: Latent TB Infection

Number of LTBI is not included in the newly notified TB patients.

Table 7. LTBI cases and rates by major city, Japan, 2020

	Dec.	Summation (Jan.-Dec.)	
	LTBI	LTBI	(Ratio) LTBI / new TB
Total	146	1,903	0.44
Sapporo City	4	76	0.55
Sendai City	2	38	0.76
Saitama City	2	20	0.18
Chiba City	2	48	0.51
Yokohama City	6	103	0.31
Kawasaki City	4	87	0.57
Sagamihara City	1	23	0.48
Niigata City	3	22	0.43
Shizuoka City	3	31	0.42
Hamamatsu City	1	29	0.30
Nagoya City	9	96	0.25
Kyoto City	8	83	0.48
Osaka City	23	329	0.56
Sakai City	7	54	0.40
Kobe City	11	70	0.32
Okayama City	3	51	0.86
Hiroshima City	3	43	0.46
Kitakyushu City	7	50	0.41
Fukuoka City	6	72	0.49
Kumamoto City	2	24	0.38
23-ku area of Tokyo	39	554	0.45

LTBI: Latent TB Infection

Number of LTBI is not included in the newly notified TB patients,

Major city: city with a population of one million or more

Table 7 is a re-count of Table 6