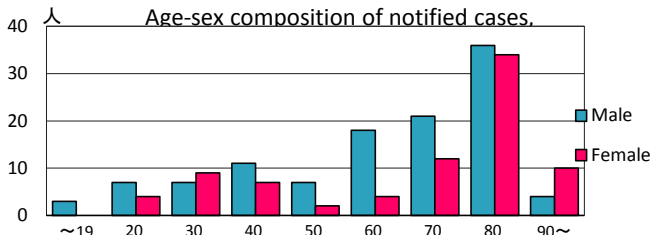
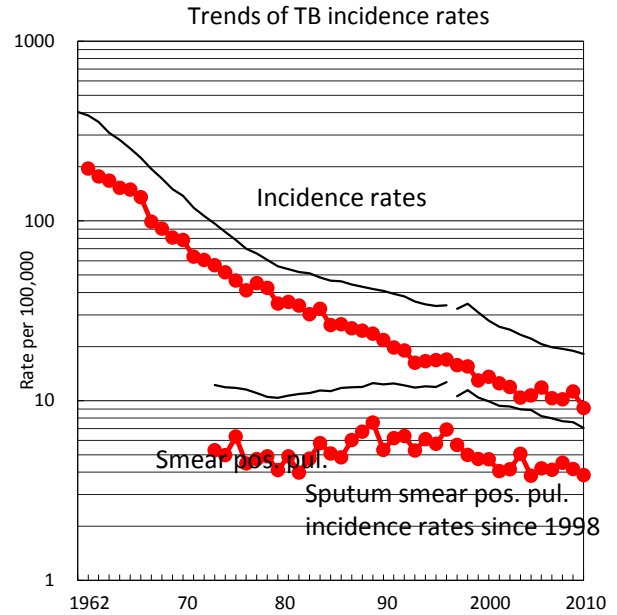
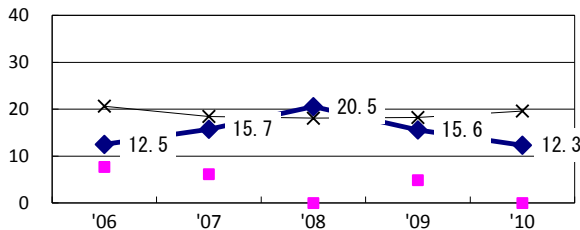


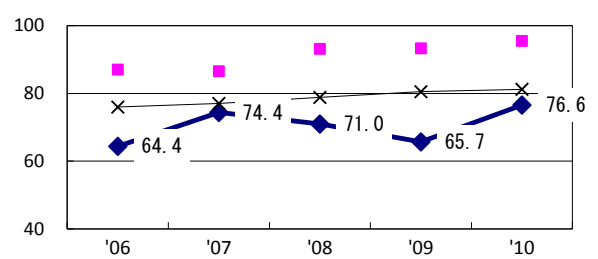
TB statistics in 2010					
Population	2,152,736			(Japan)	
Foreign borns	10	5.1%		(4.1%)	
TB patients with homeless history	0	0.0%		(1.4%)	
Jobless TB patients getting public assistance, proportion among male TB patients aged 35-59 yrs	0	0.0%		(10.8%)	
Trends	'06	'07	'08	'09	'10
Notified cases	259	225	221	243	196
Rate per 100,000	11.8	10.3	10.2	11.3	9.1
Sputum smear pos. pul. cases	92	90	98	90	83
Rate per 100,000	4.2	4.1	4.5	4.2	3.9



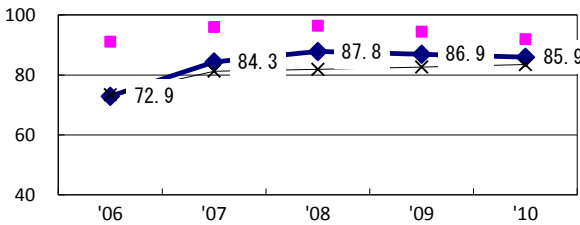
Proportion of cases with long case finding delay (>3M) among symptomatic pul. TB †



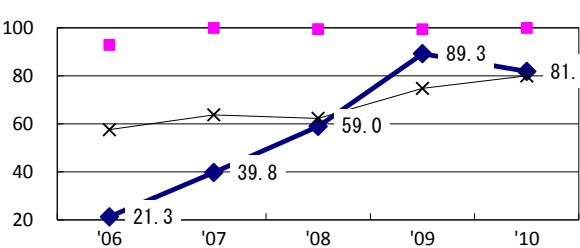
Proportion of Tx with HR-Z/E/S among all forms of TB cases aged under 80 yrs‡



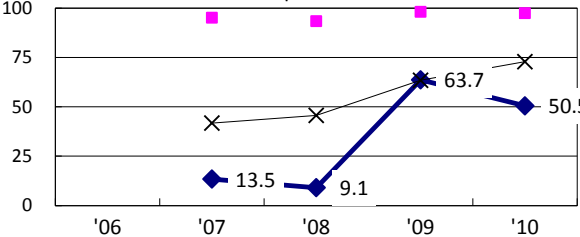
Proportion of bacillary cases among pul. TB



Proportion of culture results obtained among pul. TB

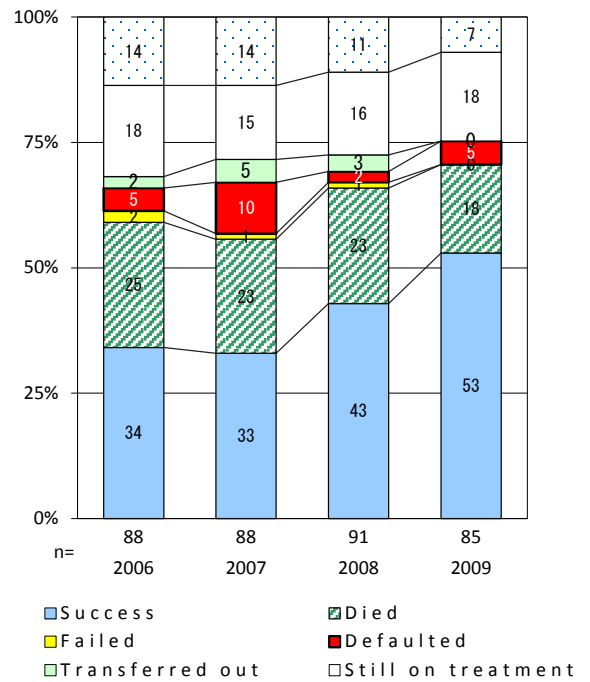


Proportion of DST results obtained among culture pos. pul. TB



◆ Nagano ■ Best prefec./city × Japan

Treatment outcomes of new sputum smear-pos. pul. cases registered in 2006-2009



†Excluding unknown delay(%)	'06: 2.4	'07: 34.1	'08: 42.1	'09: 42.1	'10: 40.2	Year of registration	'07: 282	'08: 279	'09: 279	Japan (270)
‡Excluding unknown Tx (%)	'06: 3.9	'07: 9.0	'08: 8.1	'09: 2.1	'10: 0.9	Median days of hospitalization (pul.TB)	'07: 83	'08: 89	'09: 79	Japan (68)