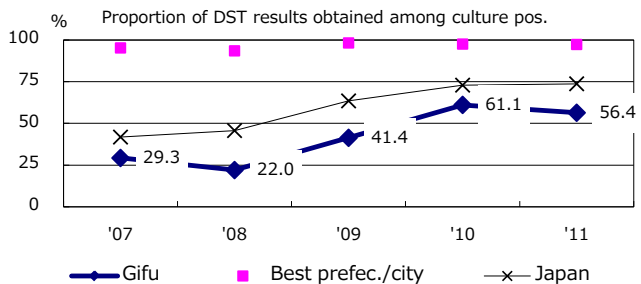
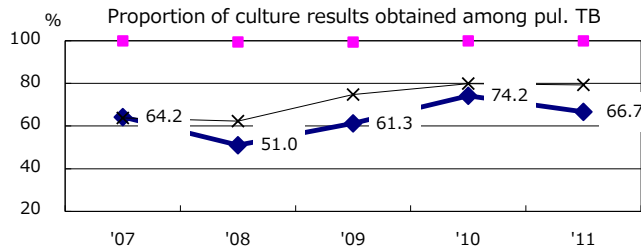
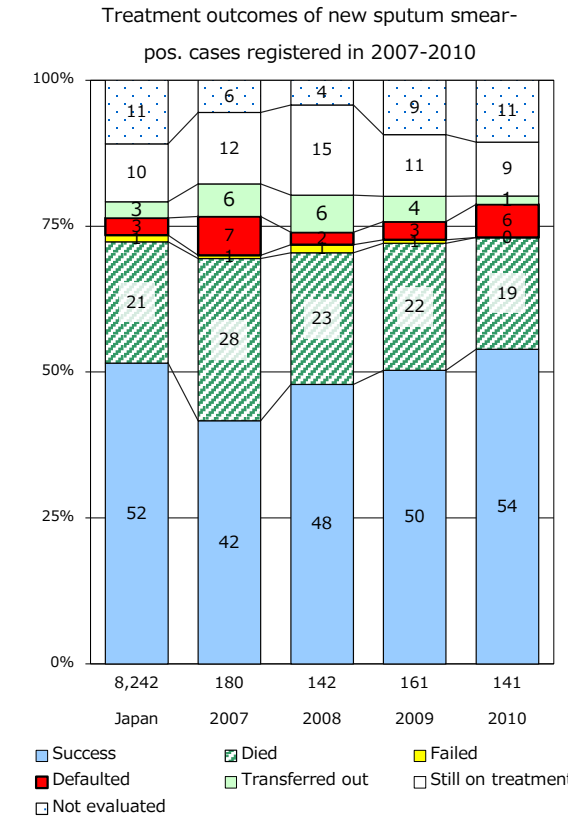
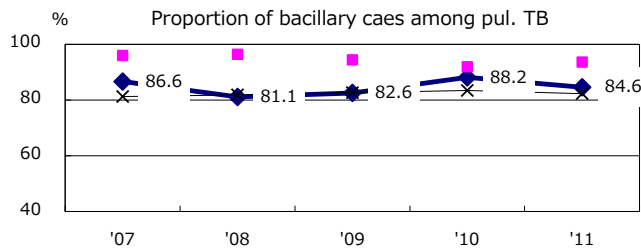
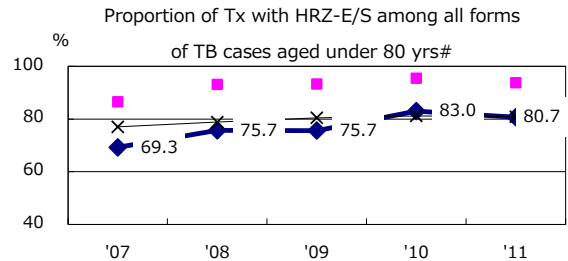
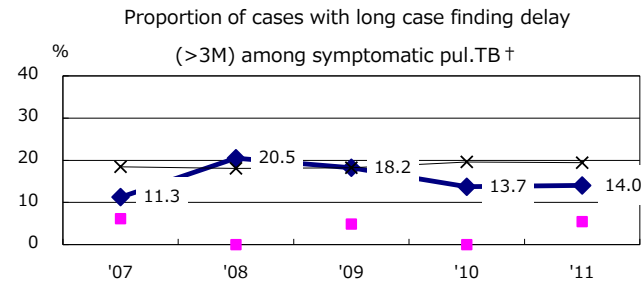
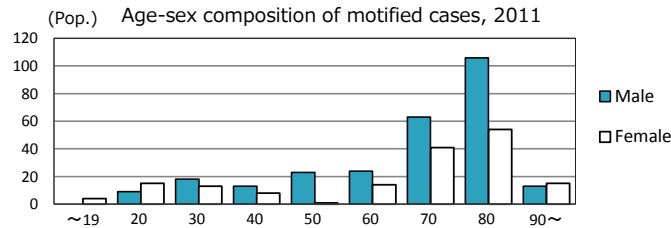
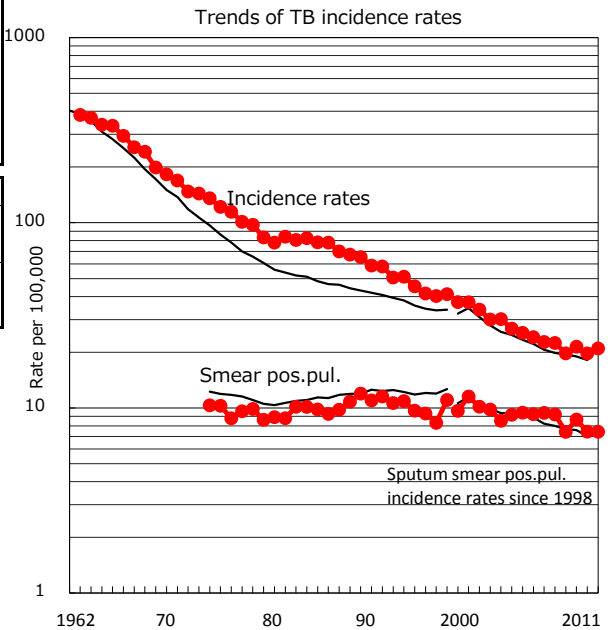


| TB statistics in 2011   |           |              |
|---|-----------|--------------|
| Population  | 2,070,908 | (Japan)      |
| Foreign borns   | 29        | 6.7% (4.1%)  |
| TB patients with homeless history   | 0         | 0.0% (1.4%)  |
| Jobless TB patients getting public assistance, proportion among male TB patients aged 35-59 yrs | 1         | 1.9% (10.6%) |

| Trends                       | '07  | '08  | '09  | '10  | '11  |
|------------------------------|------|------|------|------|------|
| Notified cases               | 472  | 414  | 448  | 410  | 434  |
| Rate per 100,000             | 22.4 | 19.7 | 21.4 | 19.7 | 21.0 |
| Sputum smear pos. pul. cases | 194  | 156  | 181  | 155  | 154  |
| Rate per 100,000             | 9.2  | 7.4  | 8.7  | 7.4  | 7.4  |



|                              | '07  | '08  | '09  | '10  | '11  | Year of registration                     | '07 | '08 | '09 | '10 | Japan |
|------------------------------|------|------|------|------|------|--|-----|-----|-----|-----|-------|
| † Excluding unknown delay(%) | 23.3 | 12.8 | 21.6 | 20.8 | 27.8 | Median days of treatment (all forms)     | 267 | 273 | 277 | 274 | (272) |
| # Excluding unknown Tx(%)    | 1.9  | 1.1  | 2.2  | 0.0  | 0.8  | Median days of hospitalization (pul. TB) | 73  | 78  | 81  | 79  | (65)  |