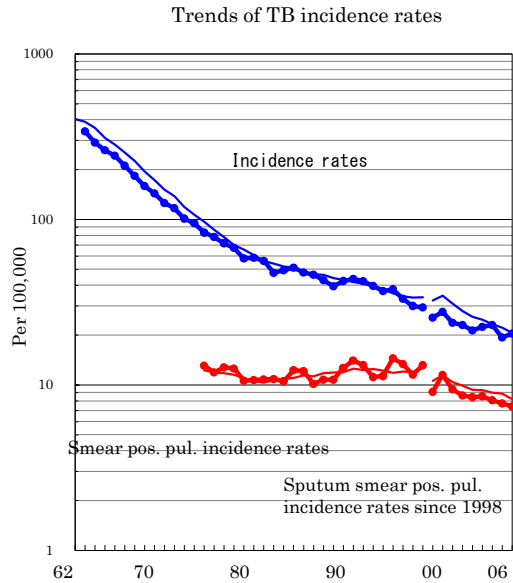
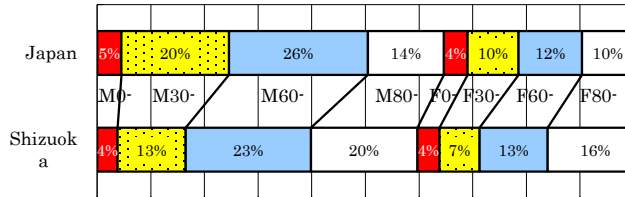


Shizuoka

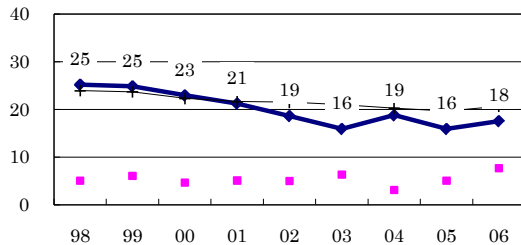
TB statistics in 2006		
Population	3,085,093	Shizuoka (Japan)
Foreigners' TB	50	7.9% (3.5%)
Estimated homeless TB among male cases aged 30-59 yrs	3	3.8% (8.9%)

Trends	02	03	04	05	06
Notified cases	808	852	874	735	630
Rate per 100,000	21.3	22.5	23.0	19.4	20.4
Sputum smear pos. pul. cases	319	324	307	293	229
Rate per 100,000	8.4	8.5	8.1	7.7	7.4

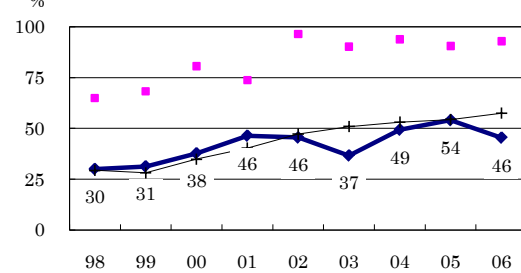
Age-sex composition of notified cases, 2006



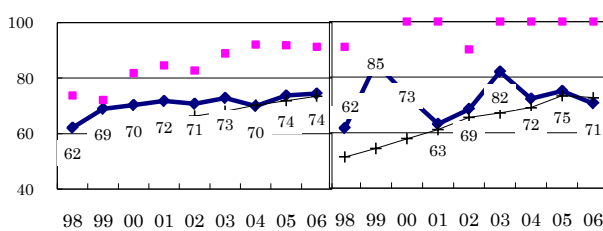
Proportion of cases with long diagnosis delay (>3M) among symptomatic pul. cases



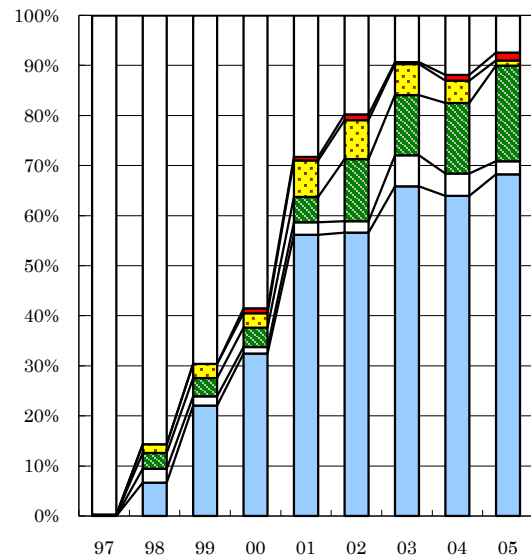
Proportion of positive or negative culture results among pulmonary cases



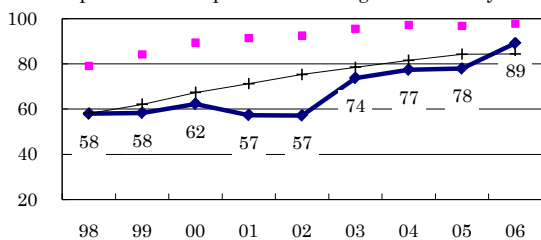
Proportion of bacillary cases among pulmonary cases



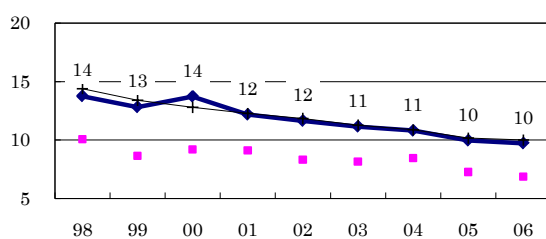
Treatment outcomes of new sputum smear-positive cases, 1997-2005 cohorts



Proportion of treatment with HRZ-E/S among new sputum smear-positive cases aged under 80 yrs



Estimated average treatment duration



Legend: Completed, Others, Died, Failed, Defaulted, Unknown

	n=	364	286	385	311	276	258	258	269	189
Completed	0	7	22	32	56	57	66	64	68	
Others	0	3	2	1	3	2	6	4	3	
Died	0	3	4	4	5	12	12	14	19	
Failed	0	2	3	3	7	8	6	4	1	
Defaulted	0	0	0	1	1	1	0	1	2	
Unknown	100	86	70	59	28	20	9	12	7	