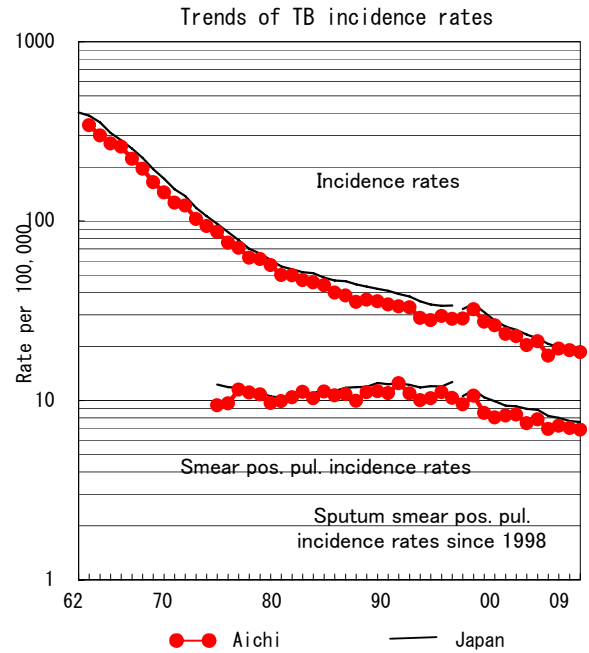
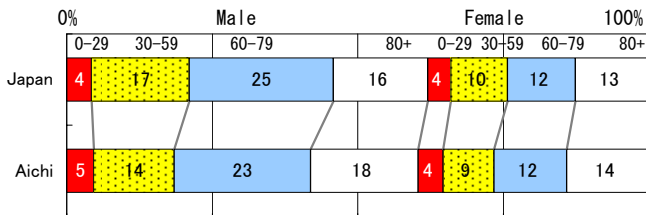


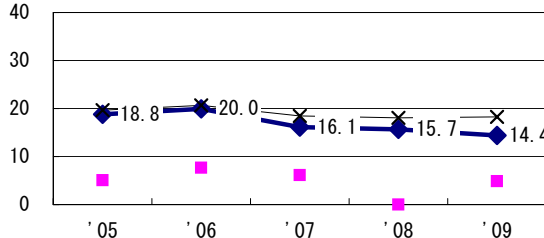
TB statistics in 2009		
Population	5,159,679	(Japan)
Foreigners	54	5.6% (3.9%)
Estimated homeless or poor TB among male cases aged 30-59 yrs	9	6.8% (12.0%)

Trends	'05	'06	'07	'08	'09
Notified cases	1,075	903	997	982	957
Rate per 100,000	21.3	17.8	19.5	19.0	18.5
Sputum smear pos. pul. cases	395	352	370	362	354
Rate per 100,000	7.8	6.9	7.2	7.0	6.9

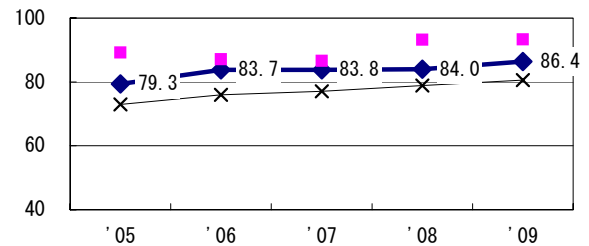
Age-sex composition of notified cases, 2009



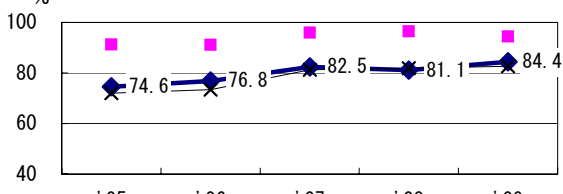
Proportion of cases with long case finding delay (>3M) among symptomatic pul. TB †



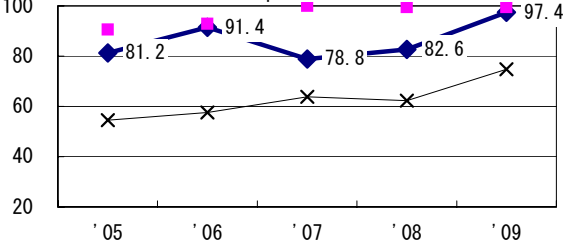
Proportion of Tx with HRZ-E/S among all forms of TB cases aged under 80 yrs ‡



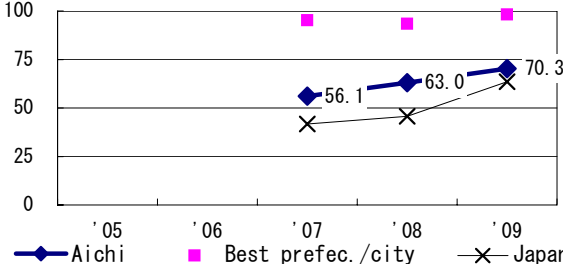
Proportion of bacillary cases among pul. TB



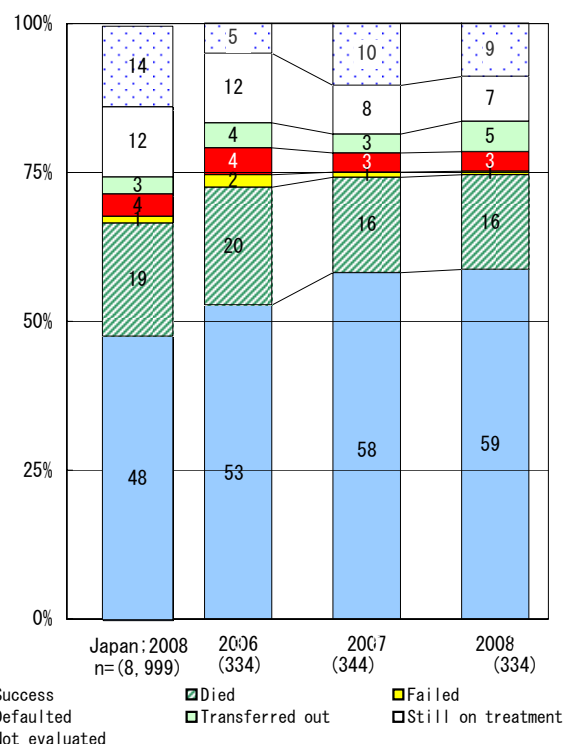
Proportion of culture results obtained among pul. TB



Proportion of DST results obtained among culture pos. pul. TB



Treatment outcomes of new sputum smear-pos. pul. cases registered in 2006-2008



	'05	'06	'07	'08	'09
† Excluding unk delay (%)	5.4	8.4	16.6	26.9	21.0
‡ Excluding unk Tx (%)	3.1	1.2	1.2	0.7	0.2

Registered year	'07	'08	Japan
Median days of treatment (all forms)	253	240	(272)
Median days of hospitalization (pul. TB)	61	75	(67)