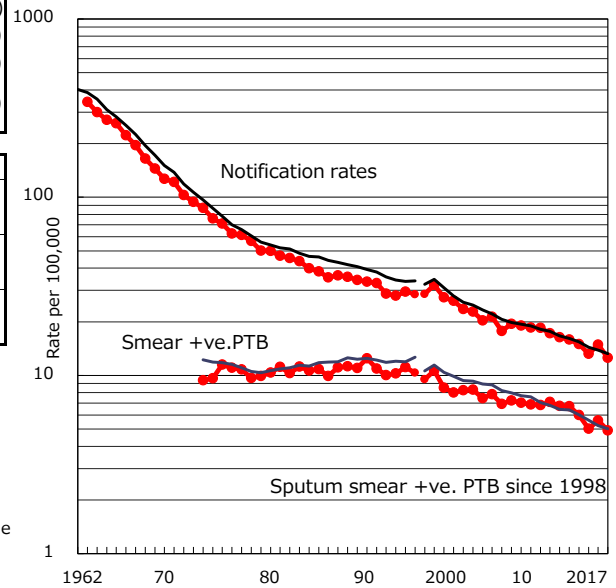


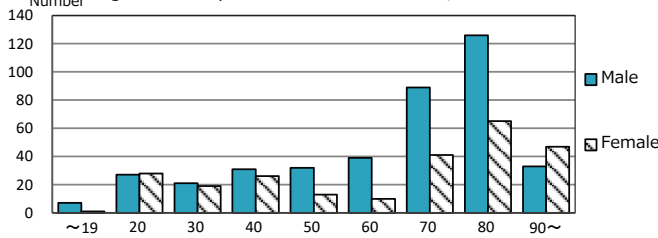
TB statistics in 2017 (Population in Aichi		5,210,634)
Among newly notified : (Japan)		
Foreign borns	96	14.7% (9.1%)
TB cases with homeless history	0	0.0% (0.9%)
Male aged 35-59,without job and receiving public assistance	3	3.6% (7.3%)

Trends	'13	'14	'15	'16	2017
Notified cases	823	777	685	776	655
Rate per 100,000 population	15.9	15.0	13.2	14.9	12.6
Sputum smear +ve. PTB	347	310	261	291	256
Rate per 100,000 population	6.7	6.0	5.0	5.6	4.9
Latent Tuberculosis Infection	286	325	291	287	308
Rate per 100,000 population	5.5	6.3	5.6	5.5	5.9

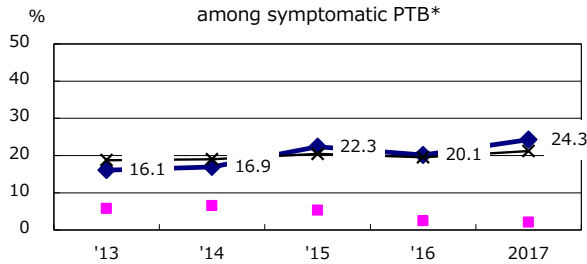
Trends of TB notification rates, all forms and smear +ve.PTB



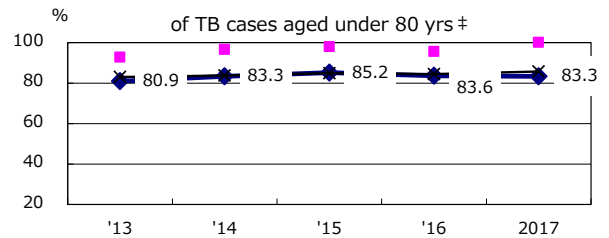
Age-sex composition of notified cases, 2017



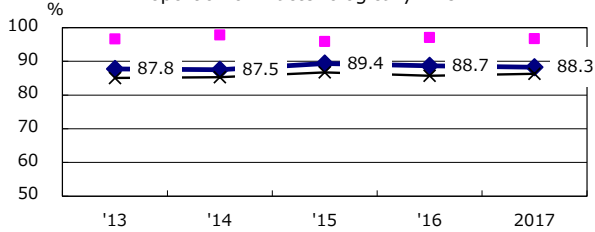
Proportion of cases with total diagnosis delay(> 3 mths) among symptomatic PTB*



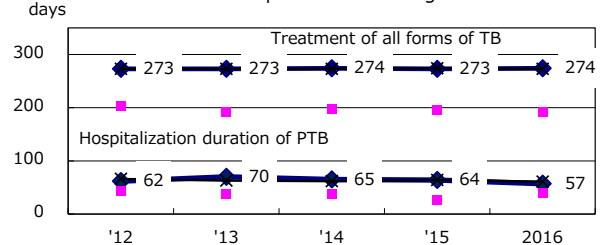
Proportion of TX with HRZ-E/S among all forms



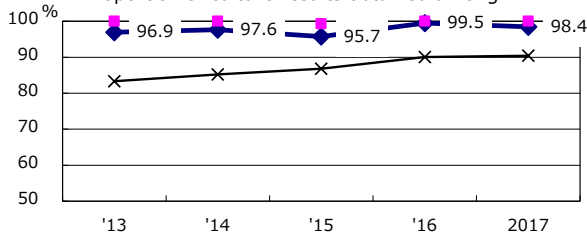
Proportion of Bacteriologically +ve. PTB



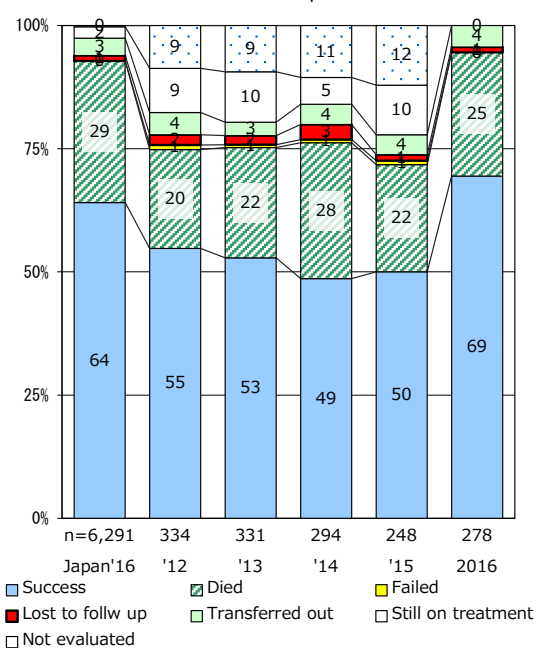
Median duration of treatment of all forms and hospitalization among PTB



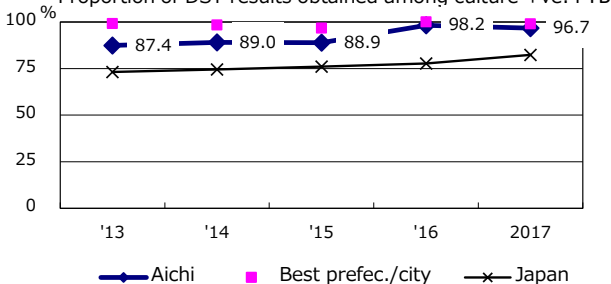
Proportion of culture results obtained among PTB



Treatment outcomes of new sputum smear +ve.TB



Proportion of DST results obtained among culture +ve. PTB



PTB : pulmonary TB

† Excluding unknown delay(%)	'13	'14	'15	'16	2017
	36.4	30.1	28.6	4.3	16.8

‡ Excluding unknown Tx(%)	'13	'14	'15	'16	2017
	1.8	2.6	2.1	1.5	1.6