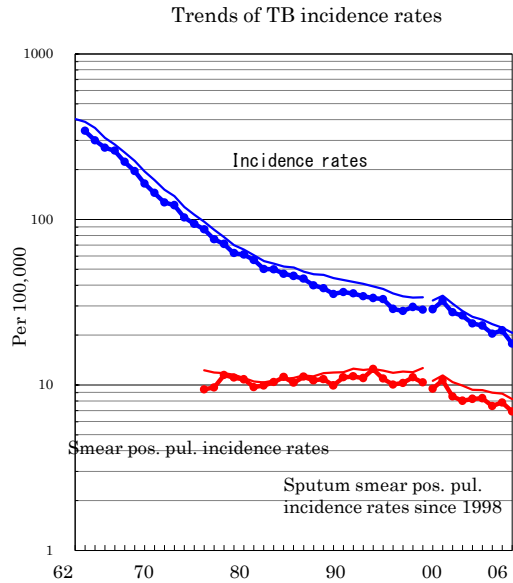
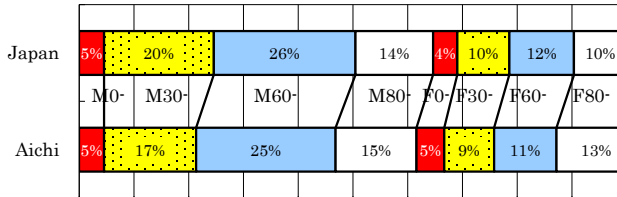


# Aichi

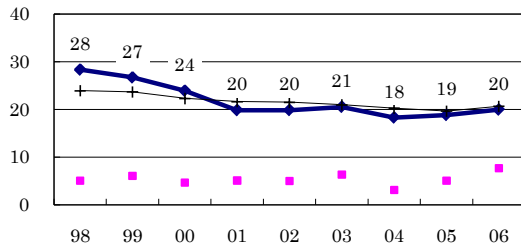
TB statistics in 2006		
Population	5,085,272	Aichi (Japan)
Foreigners' TB	64	7.1% (3.5%)
Estimated homeless TB among male cases aged 30-59 yrs	3	2.0% (8.9%)

Trends	02	03	04	05	06
Notified cases	1,161	1,132	1,016	1,075	903
Rate per 100,000	23.5	22.8	20.4	21.3	17.8
Sputum smear pos. pul. cases	407	413	372	395	352
Rate per 100,000	8.2	8.3	7.5	7.8	6.9

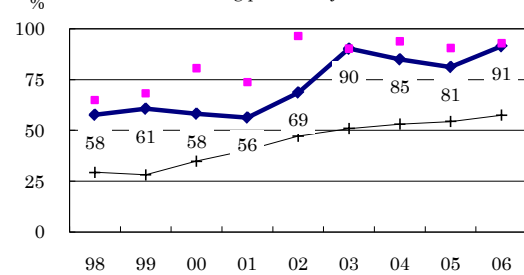
Age-sex composition of notified cases, 2006



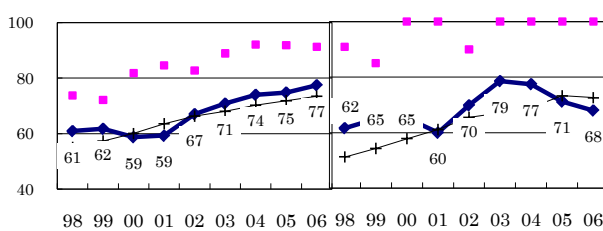
Proportion of cases with long diagnosis delay (>3M) among symptomatic pul. cases



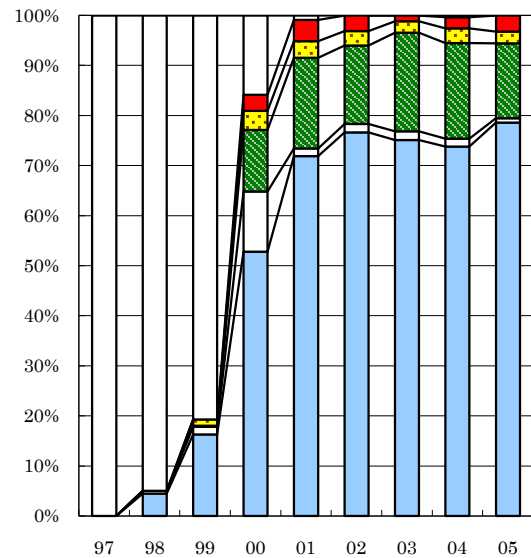
Proportion of positive or negative culture results among pulmonary cases



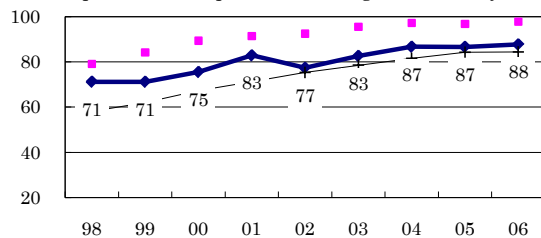
Proportion of bacillary cases among pulmonary cases



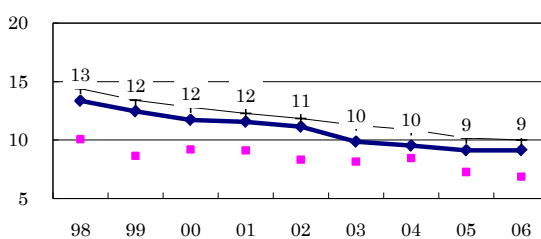
Treatment outcomes of new sputum smear-positive cases, 1997-2005 cohorts



Proportion of treatment with HRZ-E/S among new sputum smear-positive cases aged under 80 yrs



Months Estimated average treatment duration



Completed Others Died Failed Defaulted Unknown

	n=	352	378	399	341	331	351	350	309	341
Completed	0	4	16	53	72	77	75	74	79	79
Others	0	1	2	12	2	2	2	2	1	1
Died	0	0	0	12	18	16	20	19	15	15
Failed	0	0	1	4	3	3	2	3	2	2
Defaulted	0	0	0	3	4	3	1	2	3	3
Unknown	100	95	81	16	1	0	0	0	0	0