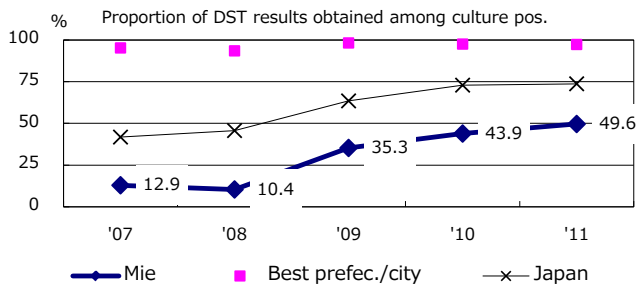
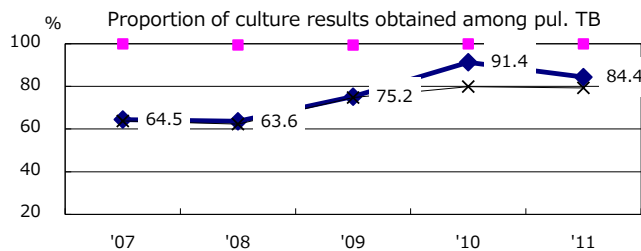
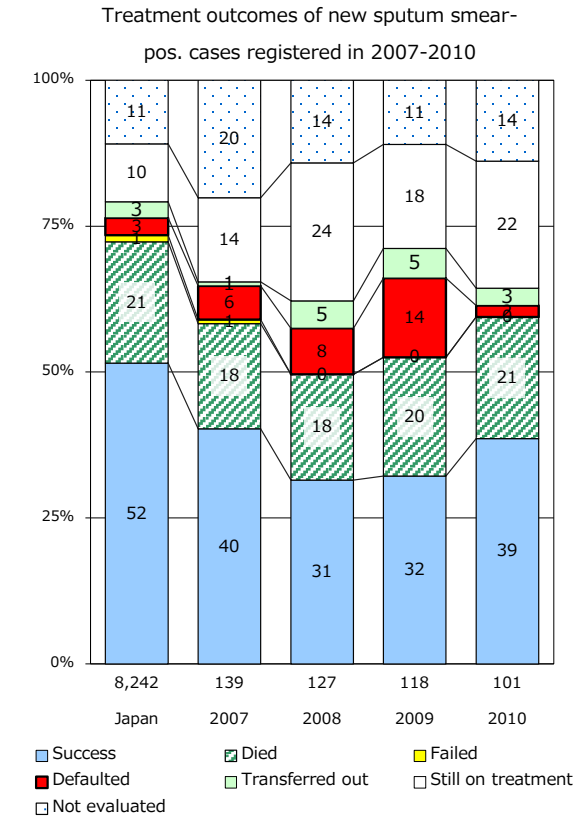
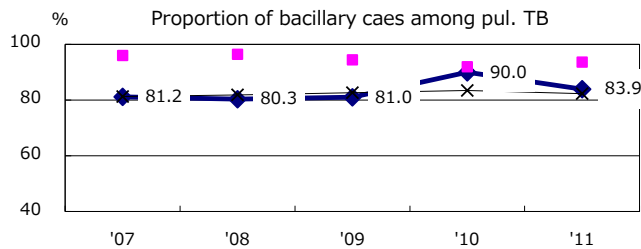
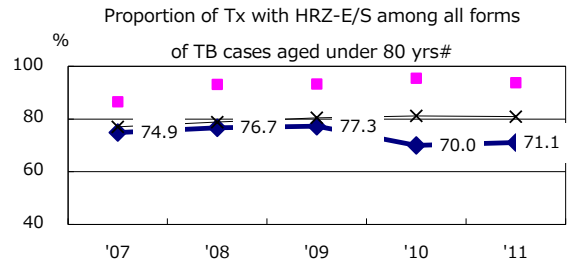
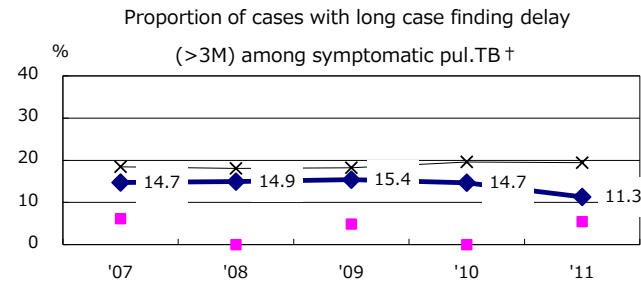
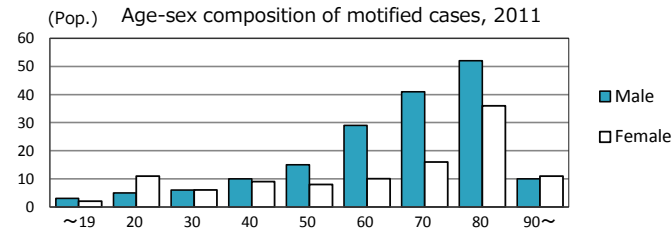
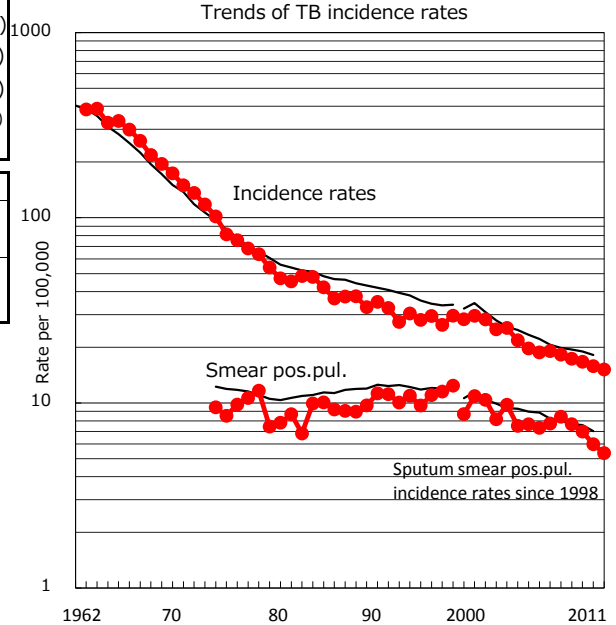


TB statistics in 2011		
Population	1,847,223	(Japan)
Foreign borns	21	7.5% (4.1%)
TB patients with homeless history	0	0.0% (1.4%)
Jobless TB patients getting public assistance, proportion among male TB patients aged 35-59 yrs	2	6.5% (10.6%)

Trends	'07	'08	'09	'10	'11
Notified cases	342	325	312	293	280
Rate per 100,000	18.2	17.3	16.7	15.8	15.2
Sputum smear pos.pul.cases	158	144	131	111	99
Rate per 100,000	8.4	7.7	7.0	6.0	5.4



	'07	'08	'09	'10	'11	Year of registration	'07	'08	'09	'10	Japan
† Excluding unknown delay(%)	16.4	29.0	26.7	33.1	21.2	Median days of treatment (all forms)	264	282	257	273	(272)
#Excluding unknown Tx(%)	0.9	1.8	1.5	1.8	2.9	Median days of hospitalization (pul.TB)	63	75	71	68	(65)